

CraneSTAR[®]

Features and Benefits



Ultimate crane monitoring, wherever you are

Manitowoc CraneSTAR is one of the most extensive crane asset management systems available today, leading the future of data monitoring and utilization planning for crane owners around the world. With CraneSTAR, you can track the productivity, security and performance of your equipment virtually anywhere. That means you can focus more on growing your business and your bottom line.





Why use CraneSTAR?

Key features and benefits

CraneSTAR gives you up-to-date crane fleet information, no matter where you or your cranes are located*. You can monitor your asset's current location and working conditions; plan maintenance and verify working hours; and maximize your company's efficiency, productivity and profitability.

Other benefits include:

Fleet Management – Improves your asset utilization

Machine Location – Allows you to identify where your equipment is working

Lift Monitoring – Reports exact amount your crane is lifting

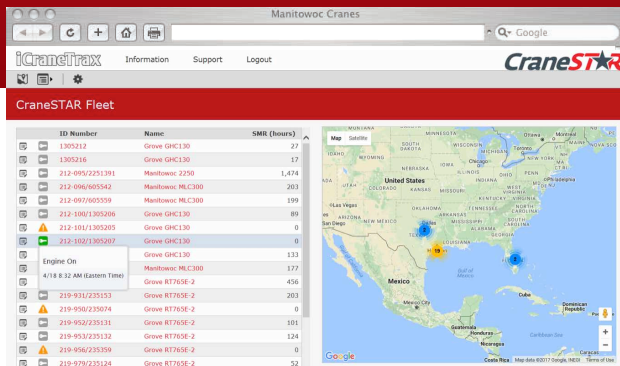
Work Monitoring – See how productive your cranes are with real data

Machine Performance and Maintenance – Be assured your cranes are working in top shape

**Subject to local cellular coverage availability.*

Machine data anywhere, anytime

CraneSTAR puts your crane data right at your fingertips, wherever you are. Using a world-wide cellular data transmission network, you can monitor where your cranes are working, their fuel status, their working status, their load capacity and more. With CraneSTAR, you can effectively manage your fleet and easily track equipment activity. It provides actual operating data that can be used to increase productivity and profitability so you can feel confident about your business.



ID Number	Name	SMR (hours)
1305212	Grove GNC130	22
1305216	Grove GNC130	17
212-090/2231391	Manitowoc 2250	1,474
212-096/60542	Manitowoc MLC300	203
212-097/60359	Manitowoc MLC300	199
212-080/130206	Grove GNC130	89
212-101/130205	Grove GNC130	0
212-102/130207	Grove GNC130	0
Engine On	Grove GNC130	133
4:14 8:12 AM (Eastern Time)	Manitowoc MLC300	177
	Grove RT765E-2	456
219-931/235153	Grove RT765E-2	203
219-950/235074	Grove RT765E-2	0
219-952/235131	Grove RT765E-2	101
219-953/235132	Grove RT765E-2	124
219-956/235359	Grove RT765E-2	0
219-979/235124	Grove RT765E-2	52

How does CraneSTAR work?

1. The CraneSTAR components monitor operational conditions
2. The CraneSTAR unit sends the crane's data via the local cellular network
3. The communication transfer lets you access your information from anywhere



How CraneSTAR helps you... make more money

When you know the working status of your equipment, you can make choices that positively impact your profits and productivity. CraneSTAR provides you with a working record of:

- Fuel consumption per hour
- Crane work time
- Operation status
- Load levels and information
- Cautions and alerts
- Service Meter Readings (SMR)

Knowing how your cranes are working helps you decide how you can better use your equipment, reduce downtime and become more efficient. Only CraneSTAR can give you the ultimate peace of mind and the answers you need to make more profitable business decisions.



How CraneSTAR helps you... keep your crane secure

Manitowoc knows that the security of your crane is a top priority. With CraneSTAR, you are ensured a number of measures that reduce the possibility of misuse or theft, including interactive map and location reporting.

CraneSTAR uses cellular data transmission to relay the location of your crane virtually anywhere in the world.

Knowing where every piece of your equipment is at all times not only helps you keep track of your fleet, it helps eliminate worry over security concerns.

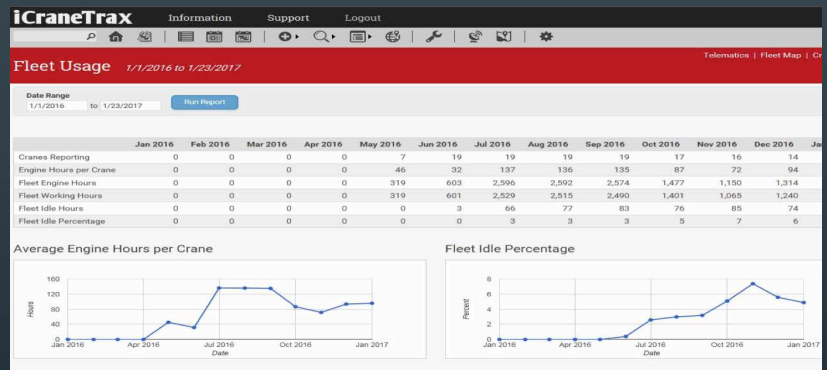
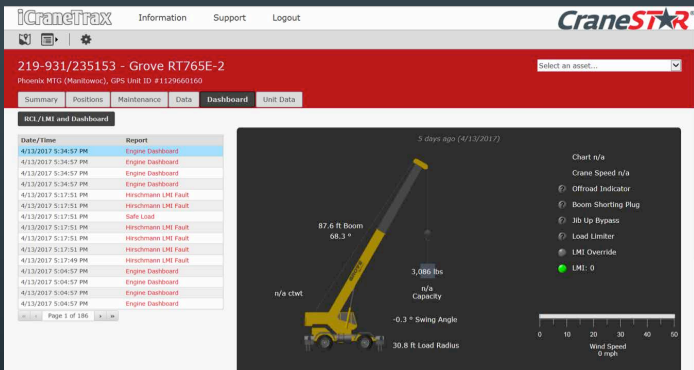
The screenshot shows the iCraneTrax web interface. At the top, there are navigation links for Information, Support, and Logout. Below the navigation is a header for the specific crane: Grove RT650E (235068), Phoenix MTG (Manitowoc), GPS Unit ID #789923. A menu bar includes Summary, Positions (selected), Maintenance, Data, Dashboard, and Unit Data. Below the menu is a filter section with 'From' (6/5/2017), 'To' (empty), 'Frequency' (1 Minute), and 'Options' (Show estimated route checkbox, Update button). A pagination bar shows 'Page 1 of 18'. The main content is a table with columns: Date/Time, Heading, Speed (mph), and Address. The table lists seven location reports from 8:44 AM to 2:44 PM on 6/12/2017, all at 0 mph, with addresses in Orlando, FL. Below the table is a map of Orlando, FL, with a location pin and a search box containing 'W Colonial Dr & FL-50 & US-92, Orlando, FL 32801, USA X'. The map shows major roads like I-4, I-95, and US-92, and landmarks like Camping World Stadium and the Orlando Science Center.

Date/Time	Heading	Speed (mph)	Address
6/12/2017 2:44 PM	●	0	679-699 N Garland Ave, Orlando, FL 32801, USA
6/12/2017 1:44 PM	●	0	W Colonial Dr & FL-50 & US-92, Orlando, FL 32801, USA
6/12/2017 12:44 PM	●	0	W Colonial Dr & FL-50 & US-92, Orlando, FL 32801, USA
6/12/2017 11:44 AM	●	0	W Colonial Dr & FL-50 & US-92, Orlando, FL 32801, USA
6/12/2017 10:44 AM	●	0	W Colonial Dr & FL-50 & US-92, Orlando, FL 32801, USA
6/12/2017 9:44 AM	●	0	W Colonial Dr & FL-50 & US-92, Orlando, FL 32801, USA
6/12/2017 8:44 AM	●	0	W Colonial Dr & FL-50 & US-92, Orlando, FL 32801, USA



How CraneSTAR helps you... keep your crane healthy

CraneSTAR lets you keep track of every aspect of your crane, which helps prevent maintenance issues and potential breakdowns. With caution alerts, regular maintenance intervals and abnormality codes, you will operate more productively and efficiently.



Reports and maintenance alerts

You have the option to receive email notifications with operational data on your crane so you can stay on top of your fleet's productivity no matter where you are.



Manitowoc Cranes

Regional headquarters

Americas

Manitowoc, Wisconsin, USA

Tel: +1 920 684 4410

Fax: +1 920 652 9778

Shady Grove, Pennsylvania, USA

Tel: +1 717 597 8121

Fax: +1 717 597 4062

Europe and Africa

Dardilly, France - TOWERS

Tel: +33 (0)4 72 18 20 20

Fax: +33 (0)4 72 18 20 00

Wilhelmshaven, Germany - MOBILE

Tel: +49 (0) 4421 294 0

Fax: +49 (0) 4421 294 4301

China

Shanghai, China

Tel: +86 21 6457 0066

Fax: +86 21 6457 4955

Middle East and Greater Asia-Pacific Singapore

Tel: +65 6264 1188

Fax: +65 6862 4040

Dubai, UAE

Tel: +971 4 8862677

Fax: +971 4 8862678/79



Product Support



This document is non-contractual. Constant improvement and engineering progress make it necessary that we reserve the right to make specification, equipment, and price changes without notice. Illustrations shown may include optional equipment and accessories and may not include all standard equipment.

©2017 The Manitowoc Company, Inc
06/2017

www.manitowoc.com