



CRAWLER CRANE RANGE

Pocket guide
ASME B30.5
Imperial/Metric

The Manitowoc Company, Inc.

Regional headquarters

Americas

Milwaukee, Wisconsin, USA
Tel: +1 414 760 4600

Shady Grove, Pennsylvania, USA
Tel: +1 717 597 8121

Europe and Africa

Dardilly, France – TOWERS
Tel: +33 (0) 4 72 18 20 20

Wilhelmshaven, Germany – MOBILE
Tel: +49 (0) 4421 294 0

APAC

Shanghai, China
Tel: +86 21 6457 0066

Singapore

Tel: +65 6264 1188

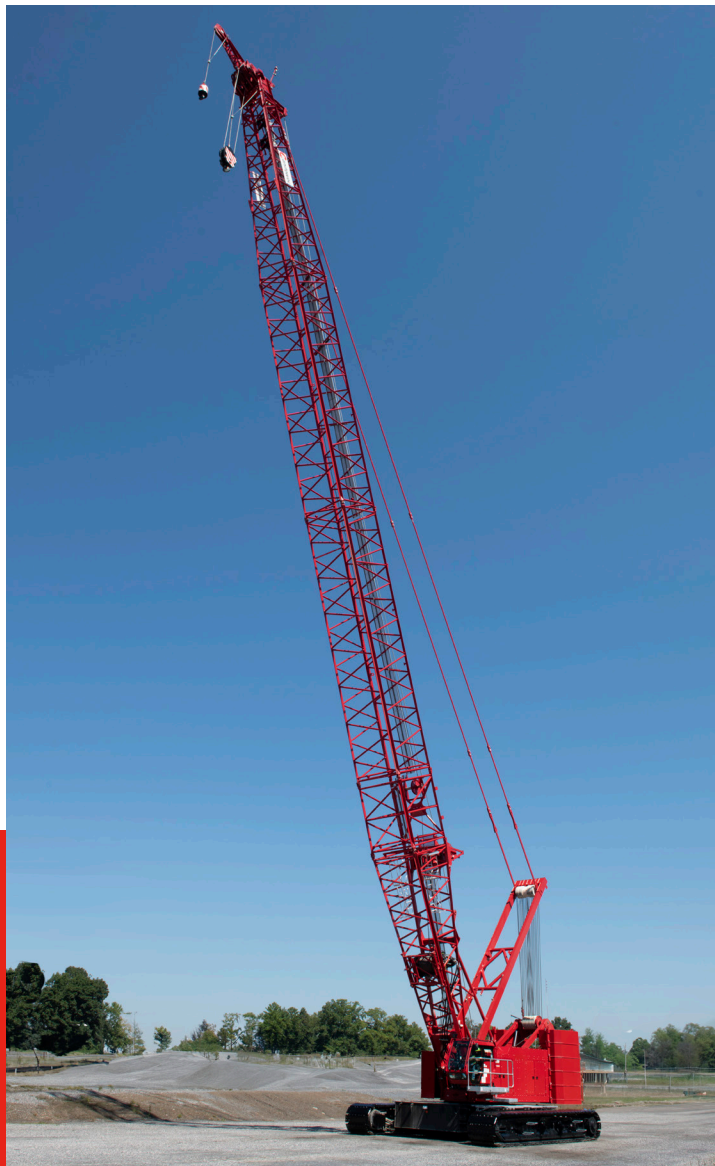
Middle East and India

Dubai, UAE
Tel: +971 4 8862677

This document is non-contractual. Constant improvement and engineering progress make it necessary that we reserve the right to make specification, equipment, and price changes without notice. Illustrations shown may include optional equipment and accessories and may not include all standard equipment.



manitowoc.com



MANITOWOC CRANE RANGE

Capacity-Enhancing Attachments

VPC-MAX®

Model	Capacity	Main boom	Fixed jib	Luffing jib
MLC300	330 USt	394 ft	–	295.3 ft + 315.0 ft
	300 t	120 m	92,0 m + 42,0 m	90 m + 96 m
MLC650	770 USt	459 ft	–	341 ft + 331 ft
	700 t	140 m	146,0 m + 36,0 m	104 m + 101 m



MLC300 VPC-MAX



MLC650 VPC-MAX









3.5 M WIDE BOOM KIT WITH VPC-MAX®

Model	Capacity	Main Boom	Luffing Jib Max Combination
MLC300	287 USt	394 ft	276 ft + 276 ft
	260 t	120 m	84 m + 84 m
MLC650	661 USt	479 ft	321 ft + 331 ft
	600 t	146 m	98 m + 101 m



MLC300 3.5m Boom

MANITOWOC CRAWLER CRANE RANGE

Model	Capacity 	Load moment 	Engine 	Main boom 	Long reach boom 	Fixed jib 	Luffing jib 	Standard line pull / line speed 
MLC80A-1	80 USt	2,672 kip-ft	330 Hp	200 ft	–	190 ft + 60 ft	–	27,600 lb / 410 fpm
	72,6 t	369.4 tonne-m	223 kW	61 m	–	58 m + 18.3 m	–	122 kN / 125 m/min
MLC90A-1	90 USt	2,672 kip-ft	330 Hp	200 ft	–	190 ft + 60 ft	–	27,600 lb / 410 fpm
	81,6 t	369.4 tonne-m	223 kW	61 m	–	58 m + 18.3 m	–	122 kN / 125 m/min
MLC100A-1	100 USt	2,679 kip-ft	330 Hp	200 ft	–	190 ft + 60 ft	–	27,600 lb / 410 fpm
	90,7 t	370.5 tonne-m	223 kW	61 m	–	58 m + 18.3 m	–	122 kN / 125 m/min
MLC100-1	110 USt	2,679 ft-kips	300 Hp	200 ft	–	190 ft + 60 ft	–	27,600 lb / 410 fpm
	100 t	370.5 tonne-m	223 kW	61 m	–	58 m + 18.3 m	–	122 kN / 125 m/min
MLC150-1	165 USt	4,701 kip-ft	325 Hp	255.9 ft	–	216.5 ft + 80 ft	147.6 ft + 170 ft	29,600 lb / 480 fpm
	150t	650 t-m	242 kW	78 m	–	66 m + 24.3 m	45 m + 51,8 m	13,430 kN / 146 m/min
MLC165-1	182 USt	5,430 ft-kips	300 Hp	275 ft	–	226 ft + 80 ft	167 ft + 170 ft	27,560 lb / 440 fpm
	165 t	760 tonne-m	239 kW	84 m	–	69 m + 24,4 m	51 m + 51,8 m	122 kN / 135 m/min
14000	220 USt	6,267 ft-kips	340 Hp	292 ft	–	243 ft + 80 ft	193.6 ft + 170 ft	31,500 lb / 460 fpm
	200 t	865 tonne-m	253 kW	89 m	–	74 m + 24,4 m	59 m + 51,8 m	140 kN / 140 m/min
MLC250	275 USt	8,268 ft-kips	340 Hp	290 ft	–	250 ft + 80 ft	180 ft + 240 ft	29,500 lb / 418 fpm
	250 t	1 115 tonne-m	253 kW	88 m	–	76.2m + 24.4 m	54,9 m +73,2 m	13 381 kN / 127 m/min
MLC300	386 USt	15,515 ft-kips	450 Hp	335 ft	–	276 ft + 138 ft	177 ft + 315 ft	36,760 lb / 536 fpm
	350 t	2 145 tonne-m	336 kW	102 m	–	84 m + 42 m	54 m + 96 m	163 kN / 163 m/min
MLC650	716 USt	29,796 ft-kips	600 Hp	341 ft	–	302 ft + 138 ft	184 ft + 331 ft	48,800 lb / 563 fpm
	650 t	4 119 tonne-m	447 kW	104 m	–	92,0 m + 42,0 m	56 m + 101 m	217 kN / 171 m/min
31000	2,535 USt	252,100 ft-kips	600 Hp	344 ft	452 ft	262.5 ft + 137.8 ft	312 ft + 374 ft	110,230 lb / 546 fpm
	2 300 t	34 800 tonne-m	447 kW	105 m	138 m	80 m + 42 m	95 m + 114 m	490 kN / 139 m/min

Note: All information related to boom lengths, capacities and other specifications are based on ASME B30.5 calculations. Models marked with an asterisk (*) are based on EN 13000.

