

**GROVE®**



# CARE CATALOGUE

**GMK MAINTENANCE PARTS, TOOLS & INFORMATION**

**10/2022**

# EXTEND THE LIFE OF YOUR CRANE

Dear Customer,

We would like to thank you for the purchase of our crane.

We really appreciate your business and look forward to the opportunity to serve you in the future.

At Grove Product Support it is our mission, to help you keep your crane in optimal condition, to ensure performance and maximise your return on investment.

To assist you, we have summarized our maintenance items, tools, repair options and information in this handy guide, to be there when you need it, all at very competitive pricing!

For further assistance contact us or your trusted Service Partner.

 **To download latest version of this brochure please follow this link or scan QR code.**



<https://www.manitowoc.com/parts/mobile-cranes-parts>

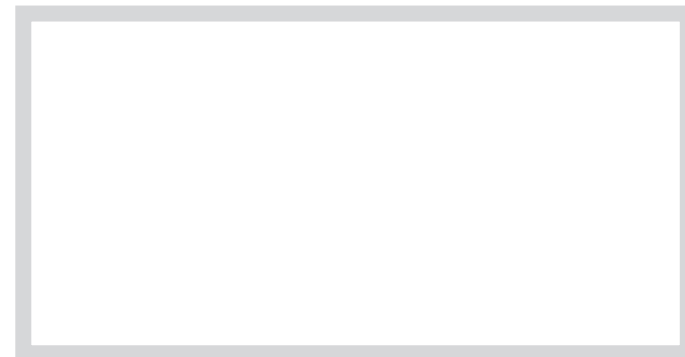
FIND YOUR LOCAL DEALER AT:  
**WWW.MANITOWOC.COM**

**GROVE®**

## CONTENTS

Maintenance Kits .....	4
Lubrication .....	12
Maintenance Tools .....	16
Useful Kits and Tools .....	18
Training .....	20
Diagnostic Tools .....	22
Diagnostic App .....	24
Maintenance App .....	26
Remanufactured! - Parts .....	28
Rebuild! - Cranes .....	30
Notes .....	32

Your contact is:



FIND YOUR LOCAL DEALER AT:  
**WWW.MANITOWOC.COM**

**GROVE®**



# MAINTENANCE KITS

Simple to order, cost-effective and easily available: GMK Maintenance kits help keep your all-terrain crane making money for you.

SCAN TO LEARN MORE:



<https://www.manitowoc.com/parts/mobile-cranes-parts>

FIND YOUR LOCAL DEALER AT:  
**WWW.MANITOWOC.COM**

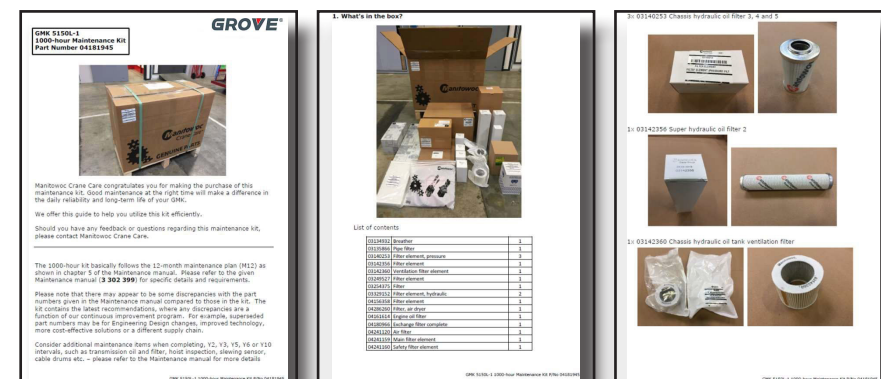
**GROVE®**

## Now with User Guides

For all of the maintenance kits, with details of the kit contents, where the filters and seals are used, and additional items that we offer to fulfill the planned maintenance.

You can download these guides from our website under:

**[www.manitowoccranes.com/Parts/ Mobile Cranes Parts](http://www.manitowoccranes.com/Parts/MobileCranesParts)**



## Pricing advantage

Benefit from substantial savings by buying kits instead of individual parts.

## Crane Reliability

Regular preventive maintenance ensures good reliability.

**Please note:** The maintenance kits do not contain any fluids or greases. These are available for ordering separately. Details are given in the user guides.

FIND YOUR LOCAL DEALER AT:  
**WWW.MANITOWOC.COM**

**GROVE®**

# MAINTENANCE KITS

Crane model	Engine		Crane S/No start	Maintenance Manual	1000h or 2000h kit P/No
GMK 2035E	Mercedes	E3a	2035 2001	3 112 340/1 or 3 112 983/4	03065750
GMK 3050-1	Mercedes	E3a	3050 2001	3 112 547/8 or 3 112 739/40	03065749
	Mercedes	E3b	3050 1001		03065749
GMK 3055	Mercedes	E3a	3055 9001		03065749
	Mercedes	E3a	3055 2001		03065749
	Mercedes	E3b	3055 1001		03065749
GMK 3060	Mercedes	E3a	3060 4101	3 112 882/3 or 3 302 476/7	03065749
	Mercedes	E3b	3060 5001		03065749
GMK 3060C	Cummins	T4F*	3060 6001	3 302 573/4	04241475

\* some T3 downgrades

GMK 3050-2	Cummins	T4F / E5	3050 2501	3 302 853/5	04299742
	Cummins	T3	3050 1501		04299741
GMK 3050-3	Cummins	T4F / E5	3050 2501	3 303 129/30	04299742
	Cummins	T3	3050 1601		04299741
GMK 3060-1	Cummins	T4F / E5	3060 2601	3 302 990/1	04299742
	Cummins	T3	3060 1501		04299741
GMK 3060-2	Cummins	T4F / E5	3060 2601	3 303 131/2	04299742
	Cummins	T3	3060 1601		04299741
GMK 3060L	Cummins	T4F / E5	3060 7001	3 302 778/9	04299742
	Cummins	T3	3060 4501		04299741
GMK 3060L-1	Cummins	T4F / E5	3060 7101	3 303 086/7	04299742
	Cummins	T3	3060 4601		04299741

FIND YOUR LOCAL DEALER AT:  
[WWW.MANITOWOC.COM](http://WWW.MANITOWOC.COM)

**GROVE®**

# MAINTENANCE KITS

Crane model	Engine		Crane S/No start	Maintenance Manual	1000h or 2000h kit P/No
GMK 4080-1	Mercedes	E3a	4080 2001	3 112 742/3 or 3 113 167/8 or 3 113 169/70	04175660
		E3b	4080 3001		04175660
GMK 4100	Mercedes	Chassis E3b	4100 6001	3 112 748/9	03065742
GMK 4100L		Super E3a		3 112 628/9	
GMK 4100	Mercedes	Chassis E3b	4100 6501	3 113 094/5	04361946
GMK 4100L		Super E3b		3 113 101/2	
GMK 4080-2	Mercedes	T4F	4080 4001	3 302 759/60	04181392
		T3	4080 5001		04181392
GMK 4090	Mercedes	T4F	4090 4003	3 302 648/9	04181392
		T3	4090 5001		04181392
GMK 4100L-1	Mercedes	T4F	4100 7001	3 302 363/4	04181392
		T3	4100 4001		04181392
GMK 4080-3	Mercedes	T3	4080 5101	3 303 190/1	04361962
		E5	4080 4101		04361962
	Mercedes	T4F	4080 4080		04361969
GMK 4090-1	Mercedes	T3	4090 5101	3 303 188/9	04361962
		E5	4090 4101		04361962
	Mercedes	T4F	4090 4080		04361969
GMK 4100L-2	Mercedes	T3	4100 7101	3 303 149/50	04361962
		E5	4100 4301		04361962
	Mercedes	T4F	4100 4250		04361969

FIND YOUR LOCAL DEALER AT:  
[WWW.MANITOWOC.COM](http://WWW.MANITOWOC.COM)

**GROVE®**

# MAINTENANCE KITS

Crane model	Engine		Crane S/No start	Maintenance Manual	1000h or 2000h kit P/No
GMK 5095	Mercedes	Chassis E3b	5095 5004	3 112 873/4	03144113
		Super E3a			
GMK 5095	Mercedes	Chassis E3b	5095 5501	3 113 097/8	04361947
		Super E3b			
GMK 5110-1	Mercedes	Chassis E3b	5110 6001	3 112 811/2	03144315
		Super E3a			
GMK 5130-2	Mercedes	Chassis E3b	5130 7001	3 112 751/2	03144315
		Super E3a			
GMK 5110-1	Mercedes	Chassis E3b	5110 6501	3 113 099/100	04182405
		Super E3b			
GMK 5130-2	Mercedes	Chassis E3b	5130 7501	3 113 091/2	04182405
		Super E3b			
GMK 5150	Mercedes	T4F	5150 0002	3 302 400/1 or 3 303 036/7	04181945
		T3	5150 7001		04181945
GMK 5150L	Mercedes	T4F	5150 1001	3 302 398/9 or 3 303 034/5	04181945
		T3	5150 9001		04181945
GMK 5150-1	Mercedes	E5	5150 3501	3 302 979/80	04326493
		T4F	5150 0501		04326493
		T3	5150 7501		04326493
GMK5150L-1	Mercedes	E5	5150 4501	3 302 977/8	04326493
		T4F	5150 1501		04326493
		T3	5150 9501		04326493

FIND YOUR LOCAL DEALER AT:  
[WWW.MANITOWOC.COM](http://WWW.MANITOWOC.COM)

**GROVE®**

# MAINTENANCE KITS

Crane model	Engine		Crane S/No start	Maintenance Manual	1000h or 2000h kit P/No
GMK 5170-1	Mercedes	Chassis E3b	5170 4001	3 112 876/7 or 3 113 028/9	03065745
		Super E3b			
GMK 5220	Mercedes	Chassis E3b	5220 4001	3 113 026/7 or 3 302 372	03065745
		Super E3b			
GMK 5180-1	Mercedes	E5	5180 6500	3 302 935/6 or 3 303 079/80	04165132
		T4F	5180 5001		04165132
		T3	5180 6002		04165132
GMK 5200-1	Mercedes	E5	5200 8501	3 302 745/6 or 3 303 081/2	04165132
		T4F	5200 5001		04165132
		T3	5200 6001		04165132
GMK 5250L	Mercedes	T4F	5250 5001	3 302 733 or 3 302 744	04165132
		T3	5250 6001		04165132
GMK 5250L-1	Mercedes	E5	5250 7001	3 302 870/1 or 3 303 050/1	04165132
		T4F	5250 5501		04165132
		T3	5250 6501		04165132
GMK 5250XL-1	Mercedes	E5	5250 9501	3 302 965/6 or 3 303 077/8	04165132
		T4F	5250 8501		04165132
		T3	5250 4501		04165132

FIND YOUR LOCAL DEALER AT:  
[WWW.MANITOWOC.COM](http://WWW.MANITOWOC.COM)

**GROVE®**



# MAINTENANCE KITS

# NOTES

Crane model	Engine		Crane S/No start	Maintenance Manual	1000h or 2000h kit P/No
GMK 6300L	Mercedes	E3b/T4i	6300 4001	3 302 841/2 or 3 112 924/5	04163128
	Mercedes	E3a/T3	6300 3001		04163128
GMK 6300L	Mercedes	T4F	6300 5001	3 302 443/4	04182012
GMK 6300L-1	Mercedes	T3	6300 3502	3 302 718/9 or 3 112 873/4	04326516
	Mercedes	T4F	6300 5096		04182012
		E5	6300 6001		04182012
GMK 6400	Mercedes	E3b/T4i	6400 2001	3 113 072/3 or 3 302 755/6	04182195
	Mercedes	E3a/T3	6400 3001		04182195
GMK6400-1	Mercedes	E5	6400 4001	3 303 218	04362376
GMK 7450	Mercedes	E3a / T3	7450 8001	3 112 912/52	04163129
GMK 7450	Cummins	T4F	7450 9001	3 302 576/7	04299638

FIND YOUR LOCAL DEALER AT:  
**WWW.MANITOWOC.COM**

**GROVE®**

FIND YOUR LOCAL DEALER AT:  
**WWW.MANITOWOC.COM**

**GROVE®**



## BOOM GREASE *PLUS*

We are proud to offer this new generation, high density boom sliding surface lubricant that has exceptional performance in all temperatures, is long lasting, weather resistant and with tested reliability.

**SCAN TO LEARN MORE:**



<https://www.manitowoc.com/parts/mobile-cranes-parts>

FIND YOUR LOCAL DEALER AT:  
**WWW.MANITOWOC.COM**

**GROVE®**

## BOOM GREASE *PLUS*

Smooth boom operation on a telescopic crane is a fundamental requirement to all lifting duties.

Owing to the construction of modern pinned booms, with relatively thin steel sections and large wear pads, this has never been more important.

Furthermore, to ensure the smooth functioning of the cranes in different weather conditions, such as high heat, rain, snow, and ice, or even a high level of dust, a special lubricant is essential.

With our latest lubricant solution, **Boom Grease Plus**, we have nearly doubled the density at high temperatures, while maintaining the low-temperature properties. This further reduces wear and prevents stick-slip in all weather conditions.

Perfectly mixable with our previous boom grease. No cleaning out of systems, or washing off from boom surfaces necessary.

The only boom grease product specified and approved by GMK Engineering Design, and packaged specifically for us.

The following sizes are available:

### Part Number

**04299657** (replaces: 02314184)  
**04299656** (replaces: 03329071)  
**04299654** (replaces: 01373458)  
**04299655** (replaces: 02314698)

### Size

**400gr.** Cartridge  
**400gr.** Cartridge (for spray gun)  
**10kg** Bucket  
**25kg** Bucket



FIND YOUR LOCAL DEALER AT:  
**WWW.MANITOWOC.COM**

**GROVE®**

# OTHER ESSENTIAL LUBRICANTS

## Adhesive Suspension Oil

Penetrates the tight tolerances of the moving parts inside the suspension cylinder, guaranteeing lubrication of all bearing surfaces. There are no equivalent or suitable alternative oils or greases for this application.

**Part Number: 02310863 1L**  
**02312890 10L**



Usage: MegaTRAK Suspension

## Bolt Grease 2.0

The next generation of high-graphite universal grease, which performs in a much wider temperature range. This highly recommended allrounder can be utilized for a variety of tasks like:

- The boom foot pin and lift cylinder pins
- The steering elements of the MegaTrak suspension strut
- Cardan shafts
- The central lubrication system



**Part Number: 03313195 400g**  
**04163374 1kg**

Usage: Boom and Telescope Cylinder pinning bolts

FIND YOUR LOCAL DEALER AT:  
[WWW.MANITOWOC.COM](http://WWW.MANITOWOC.COM)

**GROVE®**

# OTHER ESSENTIAL LUBRICANTS

## Penetrant Grease Spray

Applied to the exposed chrome surfaces it fills the plating microstructure through to the underlying steel, giving effective protection against corrosion that other greases and lubricants do not.

**Part Number: 01929824 400ml**



Usage: Cylinder Rod Protection

## Gear Tooth Spray

A high-graphite adhesive grease recommended for lubricating the external teeth of the GMK turntable bearing.

**Part Number: S-01032-63 400ml**

Usage: Turntable Bearing Gear Teeth



Please also see our website or discuss your requirements with your usual parts contact.

FIND YOUR LOCAL DEALER AT:  
[WWW.MANITOWOC.COM](http://WWW.MANITOWOC.COM)

**GROVE®**





## MAINTENANCE TOOLS

These tools are designed to apply grease efficiently. Powered by compressed air to ensure a homogenous mixture of grease with air.

SCAN TO LEARN MORE:



<https://www.manitowoc.com/parts/mobile-cranes-parts>

FIND YOUR LOCAL DEALER AT:  
**WWW.MANITOWOC.COM**

**GROVE®**

## MAINTENANCE TOOLS

The right tools can make all the difference and help to make regular maintenance quick and trouble-free.

**Boom Lubrication Kit Part Number 04158888** is designed to provide easy access to inaccessible places for tasks like lubrication inside the boom through the pinning holes.

Consisting of:

**Part Number**

- 04159862**      **Spray Lance**
- 03325445**      **Boom lubrication pump**
- 04299655**      **25kg Boom Grease *Plus***



**Part Number**

- 03329027**      **Hand Spray Gun**
- for smooth grease application



Don't let not having the right equipment be the hurdle to regular maintenance!

FIND YOUR LOCAL DEALER AT:  
**WWW.MANITOWOC.COM**

**GROVE®**



## USEFUL KITS & TOOLS

Check out our website for more information. We have many different service kits and solutions to assist you.

**SCAN TO LEARN MORE:**



<https://www.manitowoc.com/parts/mobile-cranes-parts>

FIND YOUR LOCAL DEALER AT:  
**WWW.MANITOWOC.COM**

**GROVE®**

## USEFUL KITS & TOOLS

Implementing a maintenance strategy can go a long way towards improving reliability by taking the preventive and proactive, instead of the reactive, approach.

Our competitively priced repair solutions, tools and assist devices, for different applications within your maintenance regime, are here to make this as easy and convenient as possible.

You can find more information in the bulletins we have created on each topic on our website.

Subject	Bulletin	Part Number	Description
Wishbone Repair	SB D15-007	<b>04163676</b>	<b>Wishbone Repair Kit</b>
Suspension Mounting Tools	PB D19-308	<b>04257034</b>	<b>Mounting Tool MegaTRAK Strut</b>
		<b>04257055</b>	<b>Mounting Tool Wheel Drive</b>
GMK Sheave Inspection	PB D20-307	<b>04286259</b>	<b>Measuring Tool for Sheave Groove</b>
Oil Analysis		<b>03141012</b>	<b>Oil Analysis Kit</b>
GMK3050-1 Boom Retraction Cable Inspection	PB D20-309	<b>04182194</b>	<b>Boom Retraction Cable Kit</b>
Battery Maintenance	PD D20-310	<b>04326178 220V</b> <b>04326279 110V</b>	<b>Battery Charger with Adaptor Plug</b>
GMK Cardan Shafts	PB D20-308		<b>Recommended Cardan Shaft Care</b>
CCS Jog Dial	PB D20-305	<b>03312583</b>	<b>Repair Kit</b>
Accumulator Charging	PB D20-311	<b>02257617</b>	<b>Accumulator Charging Kit</b>
Hydraulic Leaks	PB D22-301	<b>03312789 450ml</b> <b>03312791 150ml</b>	<b>Leak Detection Agent</b>
GMK Hoist Maintenance	PB D22-308	<b>see bulletin</b>	<b>Hoist brake &amp; gear exchange program</b>

FIND YOUR LOCAL DEALER AT:  
**WWW.MANITOWOC.COM**

**GROVE®**



## TRAINING

- > High Quality Training, adapted to your needs
- > Training available in several languages
- > Strategic locations around the world

**SCAN TO LEARN MORE:**



<https://www.manitowoc.com/parts/mobile-cranes-parts>

FIND YOUR LOCAL DEALER AT:  
**WWW.MANITOWOC.COM**

**GROVE®**

## TRAINING

Our Training Centers offer courses for operators and technicians across the globe to provide in depth instruction on crane operation, maintenance and troubleshooting procedures. Experienced trainers provide instruction to thousands of crane technicians and operators each year in our training centers located throughout the world.



Each facility includes interactive training tools, fully furnished classrooms, crane operation simulators, test cranes and lab workstations with equipment appropriate for the specific cranes and curriculum levels. The length of the courses ranges from two days to seven weeks, and over 50 options are offered.

We can also arrange Training formulated to your specific requirements at your location.



Web-based courses are also available to build fundamental knowledge and assess new employee knowledge prior to participating in hands-on learning at one of our training centers. All current training schedules can be downloaded from our website.

You can also reach us here:

**TrainingGMK@manitowoc.com**

FIND YOUR LOCAL DEALER AT:  
**WWW.MANITOWOC.COM**

**GROVE®**





## DIAGNOSTIC TOOLS

- > Expert tools for diagnostics and programming
- > Complete listing on our website

SCAN TO LEARN MORE:



<https://www.manitowoc.com/parts/mobile-cranes-parts>

FIND YOUR LOCAL DEALER AT:  
**WWW.MANITOWOC.COM**

**GROVE®**

## DIAGNOSTIC TOOLS

Over the years, there have been different versions of crane operating systems, rated capacity limiters and engine / transmission combinations on GMK cranes. These all require some variation of cables and tools to perform the necessary interaction.

To help you identify all these old and new GMK diagnostic cables and tools that are required for trouble-shooting and programming of GMK cranes we have compiled an overview for your easy reference available for download from our website.

Please note that some of these tools are only available after taking the prerequisite training.

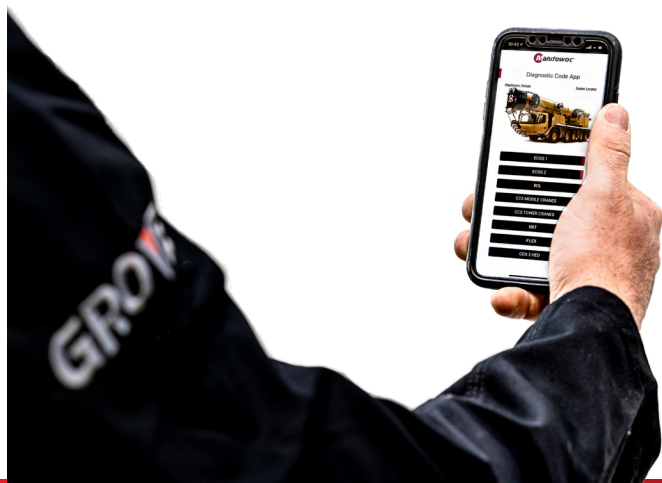
For a complete listing of all available diagnostic tools please reference bulletin D19-007.



For further details contact Grove Product Support.

FIND YOUR LOCAL DEALER AT:  
**WWW.MANITOWOC.COM**

**GROVE®**



# DIAGNOSTIC APP

Download Manitowoc's FREE smartphone app for iOS and Android devices to help interpret the diagnostic codes generated by a crane's operating system.

- > Application supports diagnostic codes on all our cranes running Manitowoc's Crane Control System (CCS) and GMK models running the ECOS1 or ECOS2 systems
- > Quick assistance in troubleshooting
- > Available from the App Store (Apple) and Google Play (Android)



<https://www.manitowoc.com/parts/mobile-cranes-parts>

FIND YOUR LOCAL DEALER AT:  
**WWW.MANITOWOC.COM**

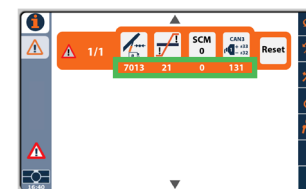
**GROVE®**

# DIAGNOSTIC APP

The process is easy: Once the error code displayed by the crane is entered in the Diagnostic Code App, an explanation of the issue is displayed to assist in immediate troubleshooting.

## ERROR SCENARIO

Crane: GMK 4100L-1  
System: CCS  
Error code: 7013 21 0 131

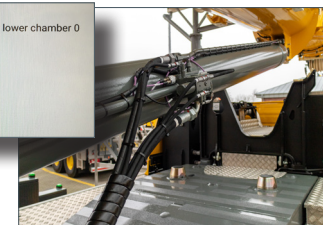


## EXPLANATION

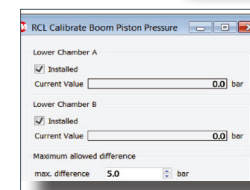
App Display

Component: Pressure sensor lower chamber 0  
Condition: Out of tolerance  
Device: SCMO  
Index: CAN bus 3  
Wire:

Lift Cylinder



CCS Software Calibration

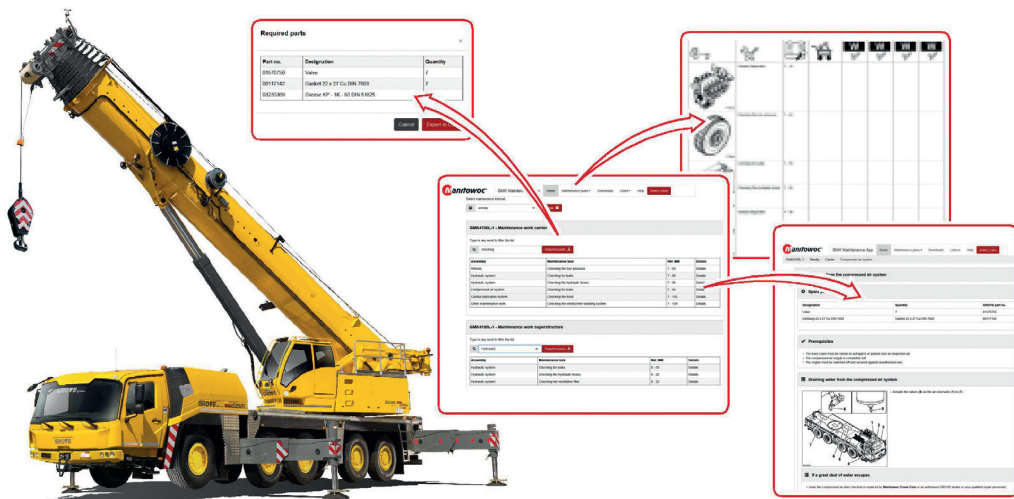


Replacement  
Transducer  
04162501

FIND YOUR LOCAL DEALER AT:  
**WWW.MANITOWOC.COM**

**GROVE®**





# GMK MAINTENANCE APP

Create your individual maintenance plan online with our free app and even set reminders for your next maintenance intervals in your calendar.

**SCAN TO LEARN MORE:**



<https://www.manitowoc.com/parts/mobile-cranes-parts>

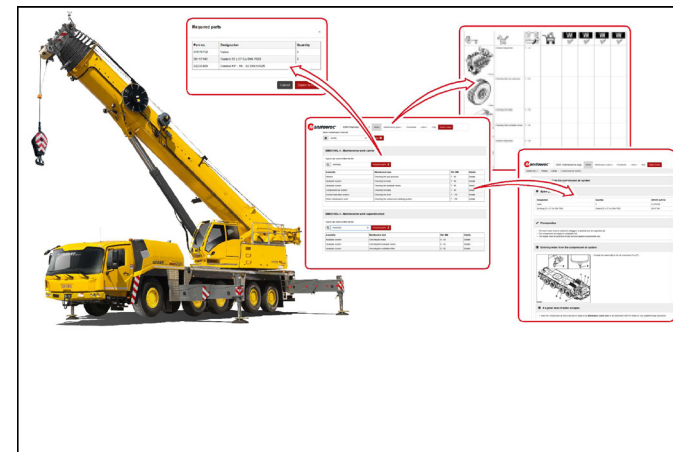
FIND YOUR LOCAL DEALER AT:  
**WWW.MANITOWOC.COM**

**GROVE®**

# GMK MAINTENANCE APP

Freely accessible direct access for current production models. Individual maintenance plans by interval or engine hours/mileage in a downloadable format, including a description of the relevant tasks directly from the maintenance manuals.

- > All parts required for the service are displayed and can be downloaded to a local CSV file for quick upload into our online ordering system.
- > You can even set a reminder in your calendar with one mouse-click.
- > Makes Maintenance Scheduling easy and efficient

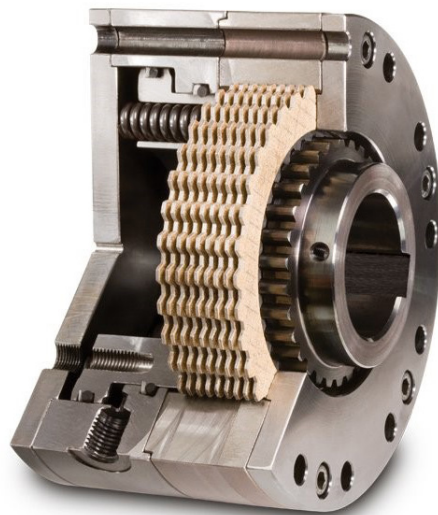


FIND YOUR LOCAL DEALER AT:  
**WWW.MANITOWOC.COM**

**GROVE®**



Hoist Brake old



We will remanufacture *as new*

## REMANUFACTURED!

We have completely revised our remanufacturing program for GMK parts!

**SCAN TO LEARN MORE:**



<https://www.manitowoc.com/parts/mobile-cranes-parts>

FIND YOUR LOCAL DEALER AT:  
**WWW.MANITOWOC.COM**

**GROVE®**

## REMANUFACTURED!

The carefully selected parts in our remanufacturing program are high value components that include transmissions, gear boxes, hydraulic cylinders, electronic units and other vital parts for your crane, all remanufactured by the original manufacturers.

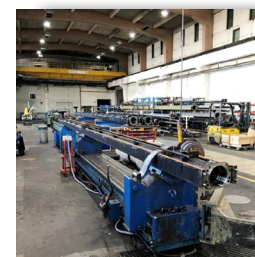
Failure of one major component does not have to be the end of the road for an older crane that has proven its value.

We know its not just the cost of the part, but also labor cost that can quickly add up. So we want to give you the most cost-effective way to get your crane back up and running every single time!

And the advantages of our offer are compelling:

- > Fast availability
- > Priced at 75 % of new
- > Attractive core return credit for usable old part  
(not valid in the Americas or Asia Pacific)
- > 12 months' warranty for remanufactured parts

Cylinder Remanufacturing



Disassembly



Inspection

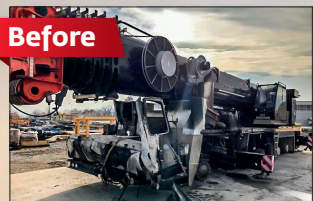


Remanufactured  
Cylinder

FIND YOUR LOCAL DEALER AT:  
**WWW.MANITOWOC.COM**

**GROVE®**





Before



After

## REBUILD!

Our qualified EnCORE facilities and partners can give your crane a new lease of life.

SCAN TO LEARN MORE:



<https://www.manitowoc.com/parts/mobile-cranes-parts>

FIND YOUR LOCAL DEALER AT:  
**WWW.MANITOWOC.COM**

**GROVE®**

## REBUILD!

When something bad happens, we are here to help. Our qualified EnCORE facilities and partners can give your crane a new lease of life.

Whether rebuild, repair or remanufacturing exchange, our EnCORE program provides cost effective solutions.

With same-as-new factory warranties, to reduce downtime and extend the life of your crane, it is an offer you should definitely take a look at.

Discuss your needs with Grove Product Support.

**GMK5130-2**

Before



After



FIND YOUR LOCAL DEALER AT:  
**WWW.MANITOWOC.COM**

**GROVE®**

**NOTES**

**NOTES**

FIND YOUR LOCAL DEALER AT:  
**[WWW.MANITOWOC.COM](http://WWW.MANITOWOC.COM)**

**GROVE<sup>®</sup>**

FIND YOUR LOCAL DEALER AT:  
**[WWW.MANITOWOC.COM](http://WWW.MANITOWOC.COM)**

**GROVE<sup>®</sup>**

**NOTES**

**NOTES**

FIND YOUR LOCAL DEALER AT:  
**[WWW.MANITOWOC.COM](http://WWW.MANITOWOC.COM)**

**GROVE<sup>®</sup>**

FIND YOUR LOCAL DEALER AT:  
**[WWW.MANITOWOC.COM](http://WWW.MANITOWOC.COM)**

**GROVE<sup>®</sup>**



# The Manitowoc Company, Inc.

## Regional headquarters

### Americas

**Milwaukee, Wisconsin, USA**

Tel: +1 414 760 4600

**Shady Grove, Pennsylvania, USA**

Tel: +1 717 597 8121

### APAC

**Shanghai, China**

Tel: +86 21 6457 0066

**Singapore**

Tel: +65 6264 1188

### Europe and Africa

**Dardilly, France - TOWERS**

Tel: +33 (0) 4 72 18 20 20

**Wilhelmshaven, Germany - MOBILE**

Tel: +49 (0) 4421 294 0

### Middle East and India

**Dubai, UAE**

Tel: +971 4 8862677

This document is non-contractual. Constant improvement and engineering progress make it necessary that we reserve the right to make specification, equipment, and price changes without notice. Illustrations shown may include optional equipment and accessories and may not include all standard equipment.

