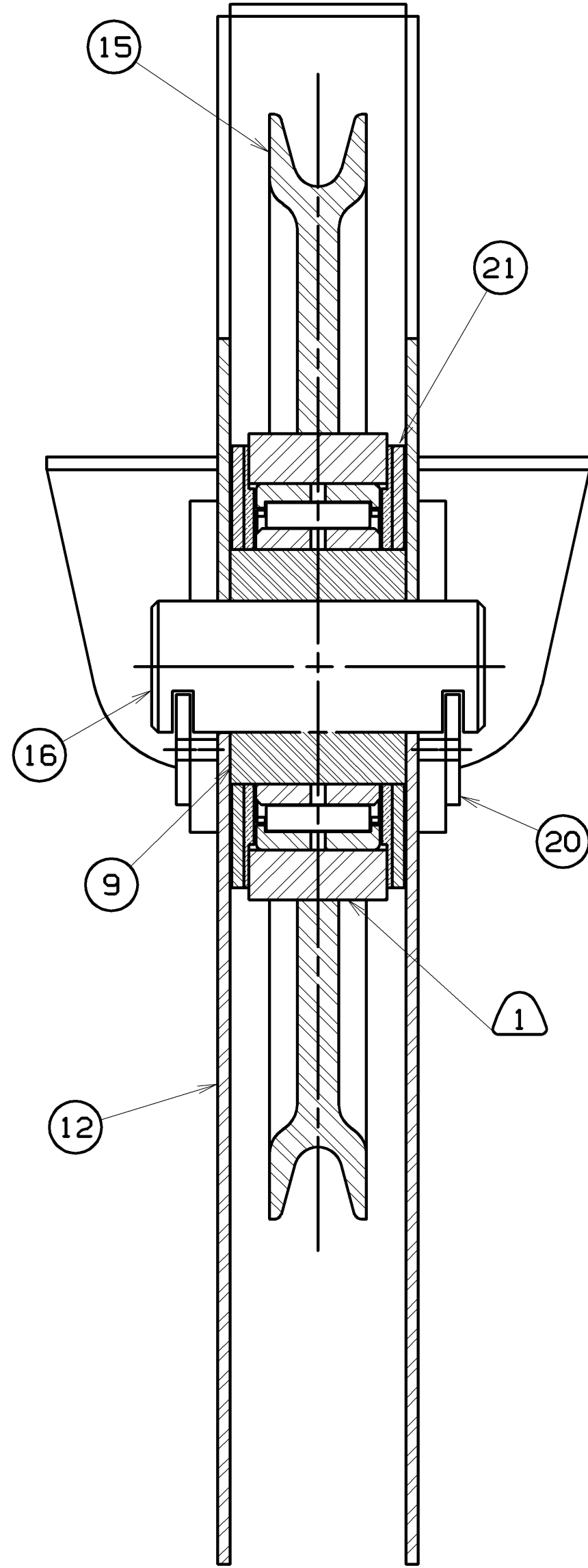
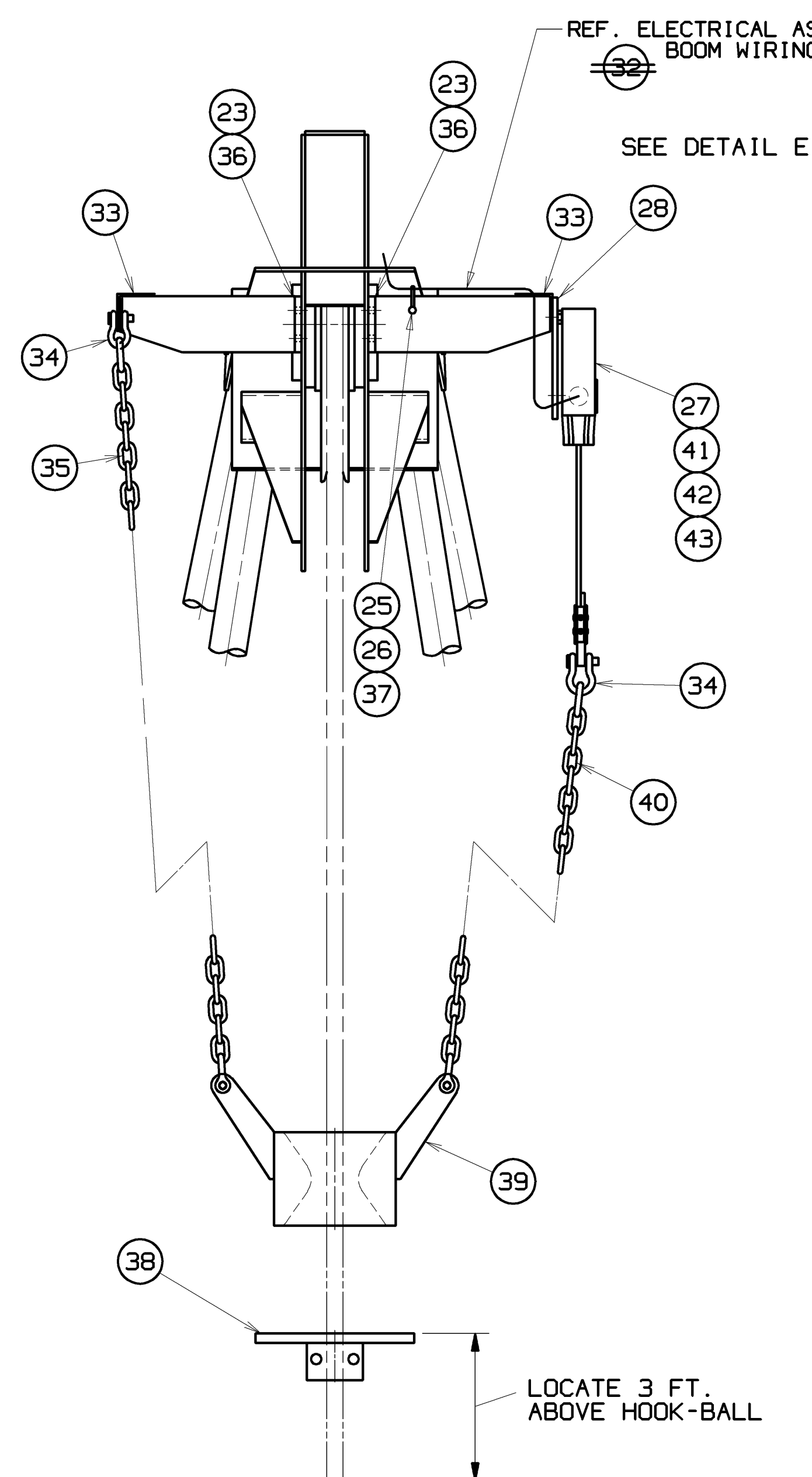


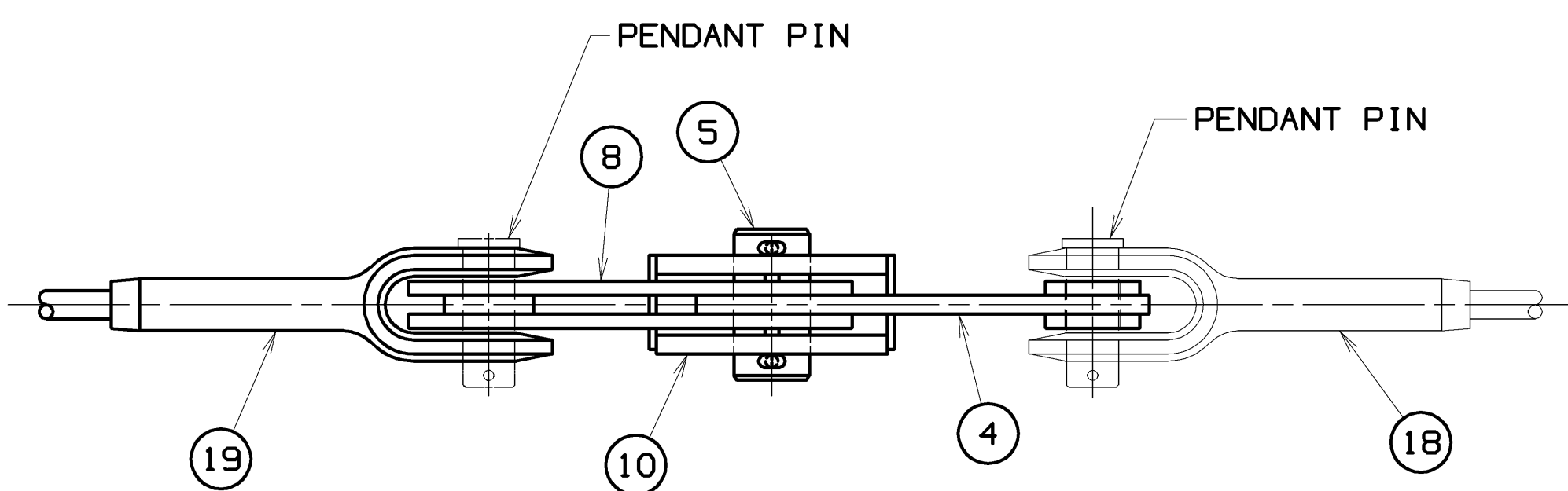
VIEW B-B
SCALE: 6=1FT



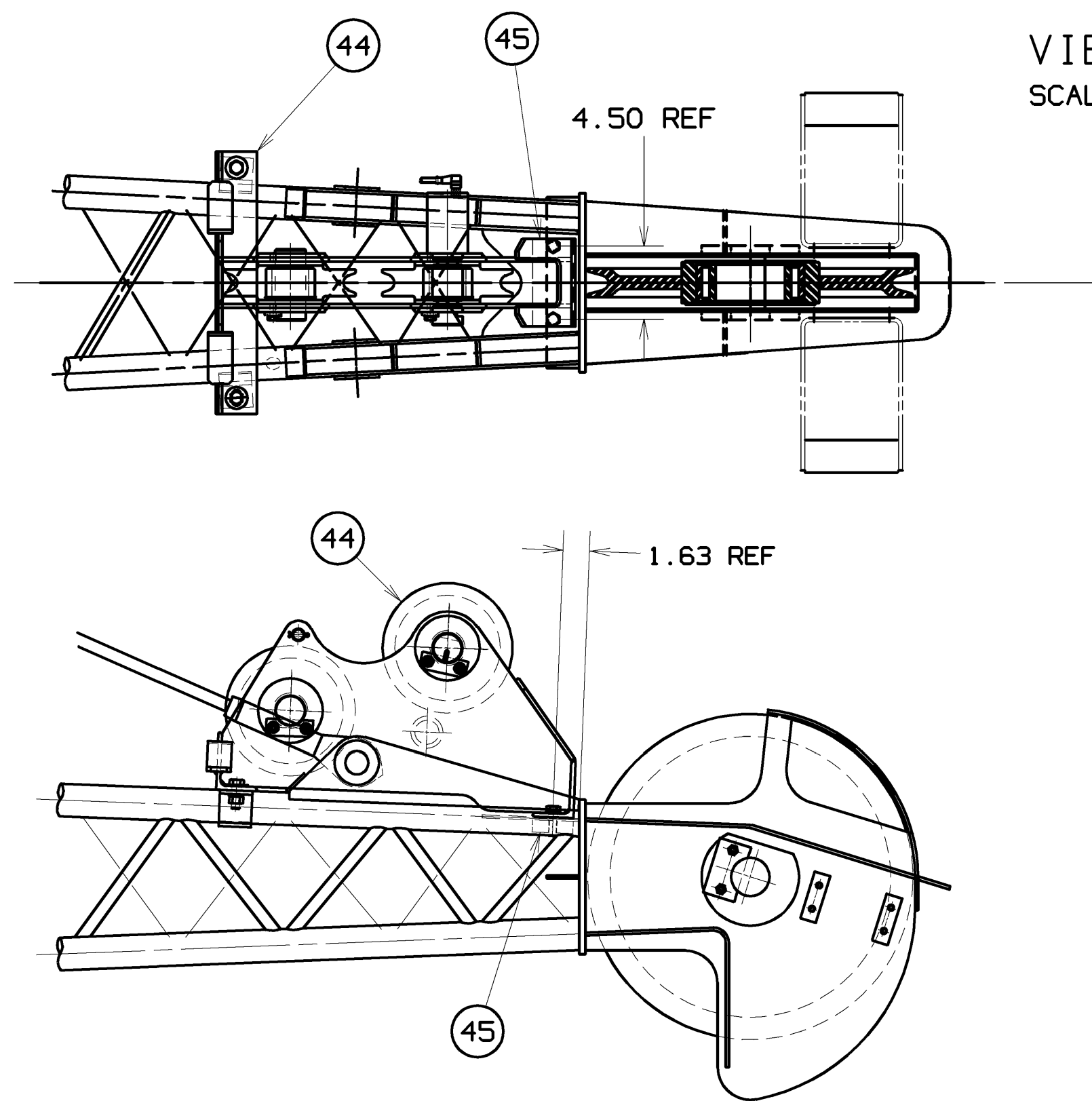
SECTION A-A
SCALE: 6=1FT



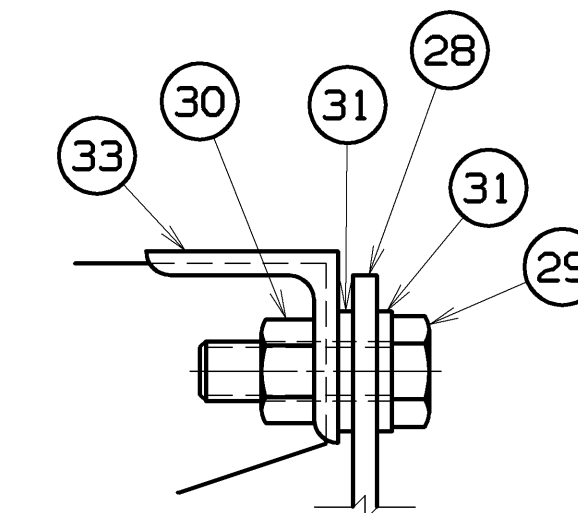
VIEW D-D
SCALE: 2=1FT



VIEW C-C
SCALE: 3=1FT



VIEW E
SCALE: 1.5=1FT



DETAIL E
ANTI-TWO-BLOCK PIVOT

- ASSEMBLE AS SHOWN.
- TIGHTEN CAPSCREW TILL CONTACT IS MADE WITH WASHERS, BRACKET AND PIVOT PLATE. PIVOT PLATE MUST MOVE FREELY.
- TIGHTEN NUT AGAINST REAR OF BRACKET TO CAPSCREW WHILE RESTRAINING CAPSCREW.
- TEST PIVOT PLATE FOR FREEDOM OF MOVEMENT. IF PLATE DOES NOT PIVOT FREELY, LOOSEN NUT AND CAPSCREW, RE-LOCK, AND REPEAT STEP 4.

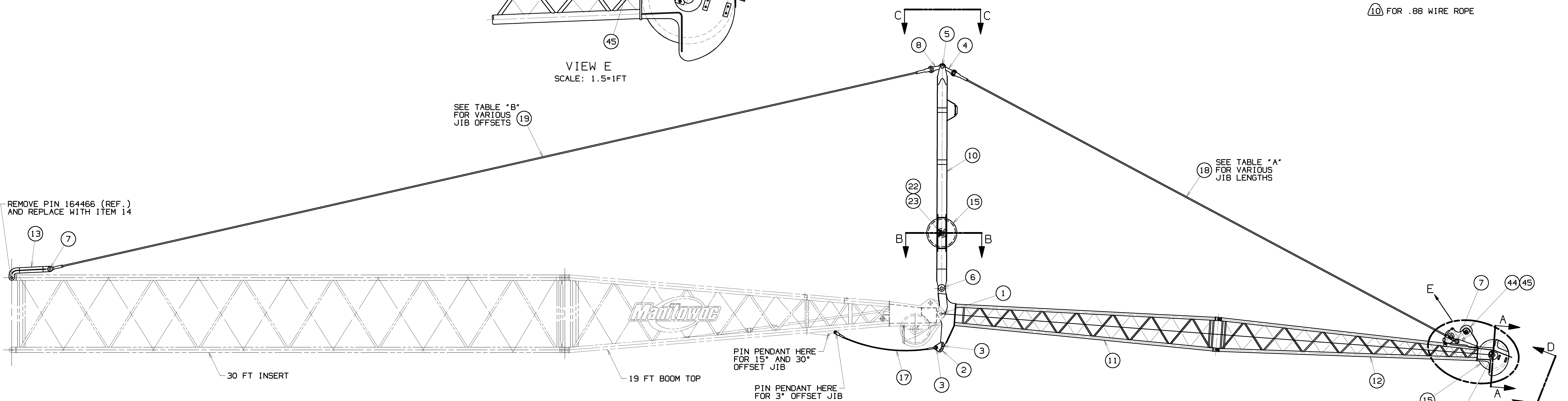
TABLE "A"			
REQ'D FOR VARIOUS JIB LENGTHS			
DWG. NO.	912797	276794 DWG. 73026 (9)	
JIB LENGTH	10 FT. INSERT	9 FT-6.00 PENDANT	
40 FT.	1	2	
50 FT.	2	4	
60 FT.	3	6	

TABLE "B"			
REQ'D FOR VARIOUS JIB OFFSETS			
DWG. NO.	277296 (7) DWG. 73026	277295 DWG. 73026 (7)	
JIB OFFSET (8)	2 FT-7.75 PENDANT	5 FT-7.00 PENDANT	
(A) 3°	0	0	
(B) 15°	2	0	
(C) 30°	0	2	

BILL OF MATERIAL					ASSEMBLIES USED IN
QTY	FIG.	DESCRIPTION	MATERIAL	QTY OF DWG. NO.	
1	2	PIN		2394	
2	4	ADJUSTING BAR		70545	
3	4	PIN		70646	
4	2	STRAP		73028	
5	2	PIN		73045	
6	2	PIN		75566	
7	4	PIN		139133	
8	4	JIB BACKSTAY STRAP		161692	
9	2	SLEEVE		912859	
10	1	JIB STRUT - 12 FT		912887	
11	1	JIB BUTT - 15 FT		912796	
12	1	JIB TOP - 15 FT		912886	
A	13	LINK		913005	
A	14	PIN		913004	
15	2	SHEAVE ASSEMBLY		911093	
16	2	SHAFT		912858	
17	2	JIB STOP PENDANT - DWG. 70529		276680	
18	2	JIB BASIC PENDANT DWG. 73026		277293	
19	2	BACKSTAY BASIC PENDANT DWG. 73026		277294	
20	4	KEEPER		910791	
21	4	WASHER		170230	
22	8	CAPSCREW HEX HD .37-16 UNC-2A X .75 LG.		612452	
B	23	WASHER LOCK .37		710304	
24					
C	25	CABLE TIE RETAINER		911075	
D	26	NUT NYLON LOCK .25-20 UNC-2B		548341	
E	27	ANTI-TWO BLOCK SWITCH MOD & ASSEMBLY		911382	
F	28	ANTI-TWO BLOCK SWITCH MOUNTING PLATE		911033	
G	29	CAPSCREW HEX HD .62-18 UNF-2A X 2.00 LG.		613415	
AE	H	30	1	HEX JAM NUT 5/8-18UNF GR 5	546272
J	31	2	WASHER FLAT .62	709480	
K	32	ANTI-TWO BLOCK JIB CABLE		911031	
L	33	2	MOUNTING BRACKET	911052	
M	34	4	ANCHOR SHACKLE	624633	
N	35	1	CHAIN #5/0 - 7FT	334101	
P	36	8	CAPSCREW HEX HD .37-16 UNC-2A X .62 LG.	612451	
Q	37	2	CAPSCREW HEX HD .25-20 UNC-2A X .75 LG.	612353	
R	38	1	LIFT BLOCK .88 ROPE	93705	
S	39	1	WEIGHT UPPER POINT OR JIB	169744	
T	40	1	CHAIN #5/0 - 6 FT	334101	
U	41	2	CAPSCREW .31-18 UNC-2A X 2.25 LG	612415	
V	42	2	NUT HEX .31-18 UNC-2B	547112	
W	43	2	WASHER LOCK .31	710303	
X	44	1	LOAD SENSOR SHEAVE SUB-ASSEMBLY	195390	
Y	45	1	MOUNTING PAD	195381	

(1) GREASE LUBRICATION:
BEFORE ASSEMBLING MAKE SURE ALL GREASE HOLES ARE OPEN. GREASE FITTING LOCATIONS ARE MARKED WITH THIS SYMBOL ▲.
USE MOBILUX E.P. #2 GREASE (MCC CODE NO. 471197) OR EQUIVALENT.

- (4) 5 FT-7.625 LONG
- (5) 30 FT-11.00 LONG
- (6) 49 FT-0.00 LONG
- (7) LOCATE BETWEEN LINK #169244 (ITEM 13) AND PENDANT #277294 (ITEM 19).
- (8) JIB OFFSETS ARE NOMINAL
- (9) LOCATE BETWEEN STRAP #73028 (ITEM 4) AND PENDANT #277293 (ITEM 18).
- (10) FOR .88 WIRE ROPE



BASIC 30 FT. JIB W/3° JIB OFFSET SHOWN

<p>THIS PRINT REMAINS THE PROPERTY OF MANITOWOC CRANES, INC. ALL INFORMATION CONTAINED HEREIN IS CONFIDENTIAL. IT IS LOANED, SUBJECT TO RETURN UPON DEMAND, AND ON EXPRESS CONDITION THAT IT IS NOT TO BE COPIED OR USED DIRECTLY OR INDIRECTLY IN ANY MANNER WITHOUT THE WRITTEN PERMISSION OF MANITOWOC CRANES, INC.</p>	<p>TOLERANCE UNLESS OTHERWISE SPECIFIED</p> <table border="1"> <tr> <th>DECIMAL PLACES</th> <th>FABRICATION</th> <th>MACHINING</th> </tr> <tr> <td>(1) PLACE 0.0</td> <td>±.12</td> <td>±.18</td> </tr> <tr> <td>(2) PLACE 0.00</td> <td>±.08</td> <td>±.12</td> </tr> <tr> <td>(3) PLACE 0.000</td> <td>±.005</td> <td>±.005</td> </tr> <tr> <td>ANGLES</td> <td>±1.30</td> <td>±0.90</td> </tr> </table>	DECIMAL PLACES	FABRICATION	MACHINING	(1) PLACE 0.0	±.12	±.18	(2) PLACE 0.00	±.08	±.12	(3) PLACE 0.000	±.005	±.005	ANGLES	±1.30	±0.90	<p>DATE: 5-14-98</p> <p>DR. BOB CK. BOB APP</p>	<p>Manitowoc Cranes, Inc. Manitowoc, Wisconsin</p>	<p>JIB ASSEMBLY W111 JIB .75 SWAGED PENDANTS</p>	<p>912885</p>
DECIMAL PLACES	FABRICATION	MACHINING																		
(1) PLACE 0.0	±.12	±.18																		
(2) PLACE 0.00	±.08	±.12																		
(3) PLACE 0.000	±.005	±.005																		
ANGLES	±1.30	±0.90																		