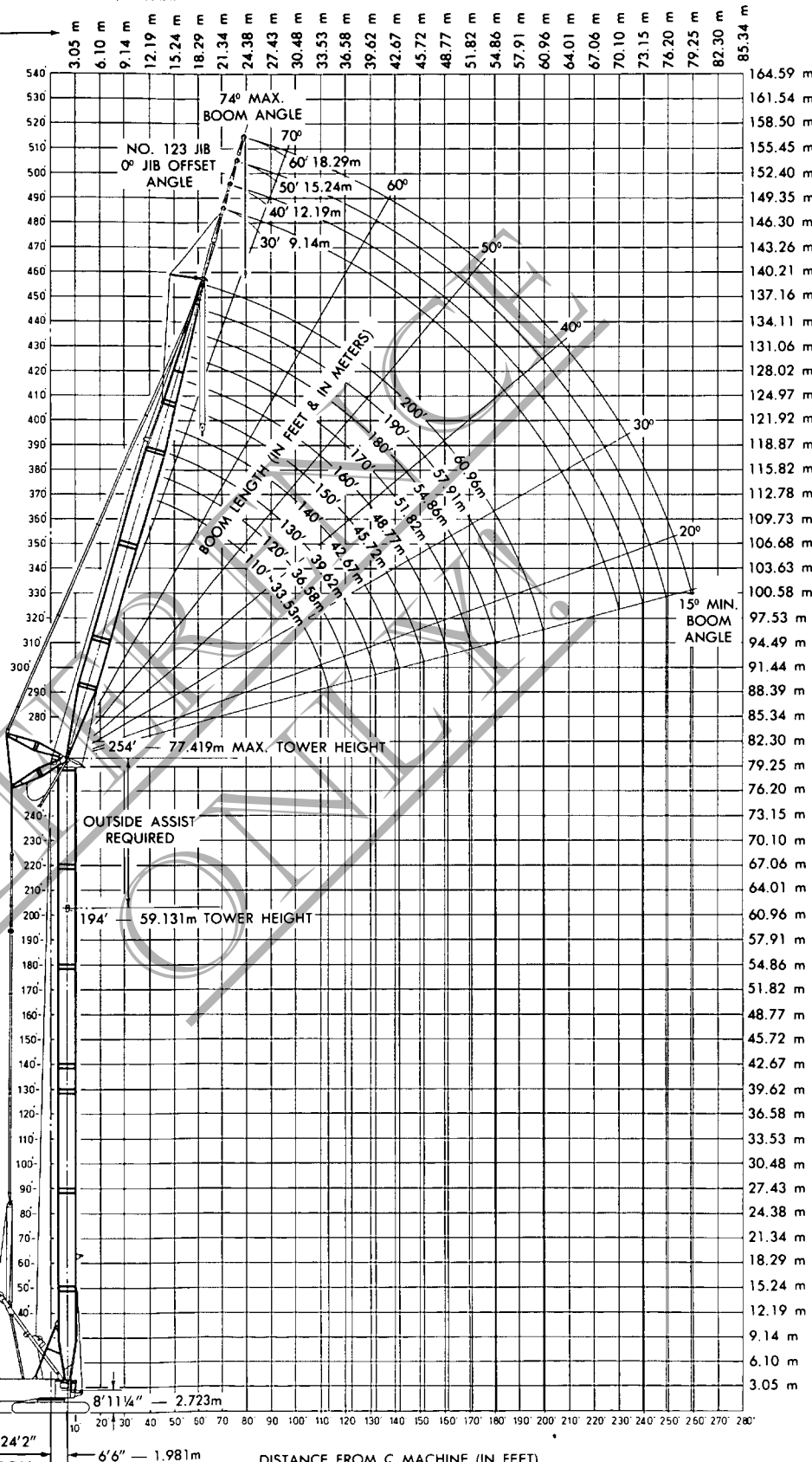


MANITOWOC ENGINEERING CO.

A Division of The Manitowoc Company, Inc.

Manitowoc, Wisconsin

DISTANCE FROM  $\zeta$  MACHINE (IN METERS)



- NOTE 1: THIS DRAWING IS INTENDED ONLY AS A GUIDE TO ASSIST IN JOB PLANNING.
- NOTE 2: FOR PLANNING A LIFT, THIS DRAWING IS TO BE USED IN CONJUNCTION WITH APPROPRIATE —
  - A. CAPACITY CHARTS.
  - B. RANGE CHART.
  - C. LOAD LINE SPECIFICATIONS.
  - D. RIGGING DRAWING.
  - E. OUTLINE DIMENSIONS.
- NOTE 3: FOR PLANNING LIFTS WHERE CLEARANCES ARE LIMITED AND ACCURACY IS DESIRED, A DETAILED LAYOUT SHOULD BE PREPARED.
- NOTE 4: WHEN EQUIPPED WITH HOIST LINE LIMIT SWITCH, CONTACT FACTORY FOR LOAD BLOCK TO BOOM POINT MINIMUM DISTANCE.

MAXIMUM BOOM ANGLE: 74° FOR NO. 22B BOOM ON NO. 27B TOWER

TAILSWING  $\zeta$  ROTATION

DO NOT SCALE THIS DRAWING

SUPERSEDED 65267 OF 4-9-74

6-10-81

LARGER SIZE DIAGRAMS AVAILABLE — CONTACT DEALER

65267

RANGE DIAGRAM — 4600 SERIES 4 — NO. 27B TOWER — NO. 22 BOOM — NO. 123 JIB