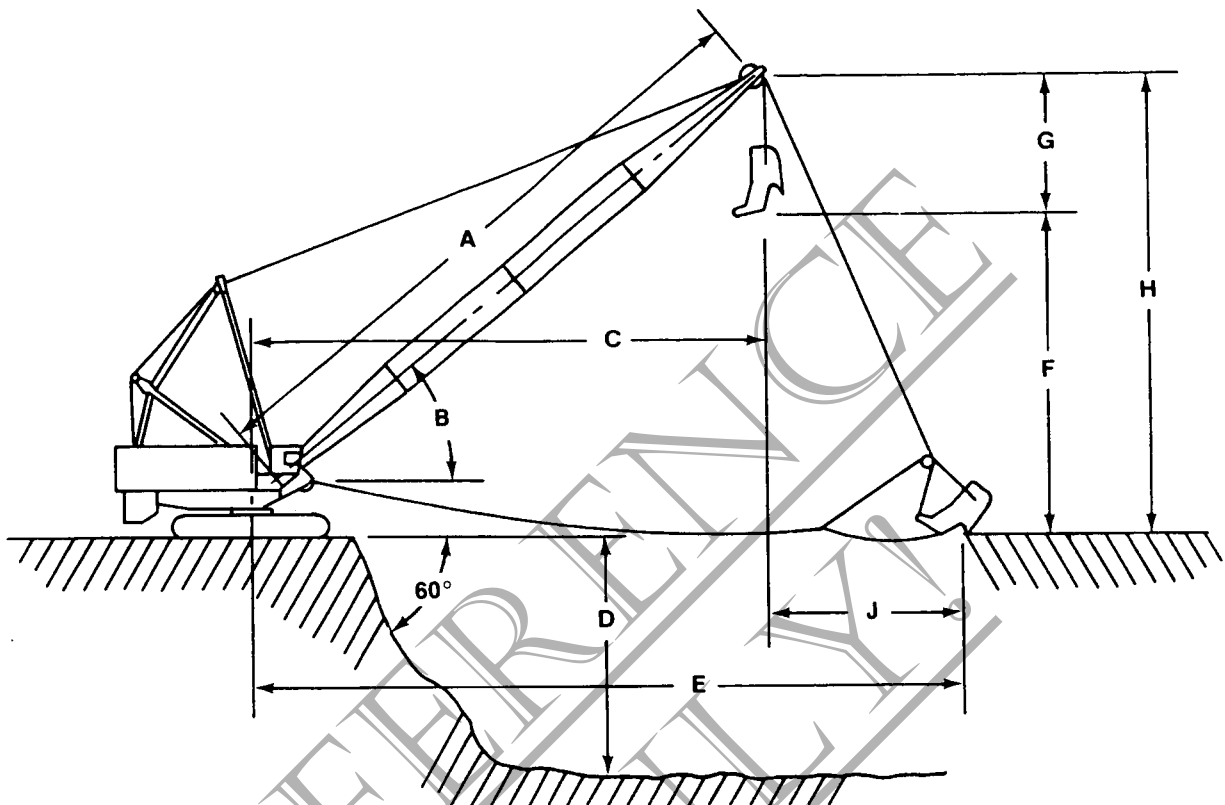


# DRAGLINE RANGE DIAGRAM

**6400**



A	BOOM LENGTH	FEET	160			180			200		
		METERS	48.8			54.9			61.0		
B	BOOM ANGLE	DEGREES	30	35	40	30	35	40	30	35	40
C	CL OF ROTATION TO CENTER DUMP	FEET	148	140	132	165	157	147	182	173	162
		METERS	45.1	42.7	40.2	50.3	47.9	44.8	55.5	52.7	49.4
D	DEPTH CUT (APPROX.)	FEET	159	146	131	189	174	157	211	202	184
		METERS	48.5	44.5	39.9	57.6	53.0	47.9	64.3	61.6	56.1
E	DIGGING REACH (APPROX.)	FEET	171	167	163	192	188	182	212	208	202
		METERS	52.1	50.9	49.7	58.5	57.3	55.5	64.6	63.4	61.6
F	DUMPING HEIGHT	FEET	70	82	93	80	93	106	90	105	119
		METERS	21.3	25.0	28.3	24.4	28.3	32.3	27.4	32.0	36.3
H	HEIGHT FROM GRADE TO CL OF BOOM POINT	FEET	95	107	118	105	118	131	115	130	144
		METERS	29.0	32.6	36.0	32.0	36.0	39.9	35.1	39.6	43.9
J	CASTING DISTANCE	FEET	23	27	31	27	31	35	30	35	40
		METERS	7.0	8.2	9.4	8.2	9.4	10.7	9.1	10.7	12.2

The working ranges in the table above are based on the following conditions:

1. Dimension 'F' is based on a 'G' dimension of 25' (7.6m).
2. Dimension 'D' is based on a 20' (6.1m) floor level bottom to fill the bucket and casting distance 'J' equal to approximately 1/3 the dumping height 'F'. The two dimensions are also based on maximum drum capacity with one layer of rope. Front drum (hoist) capacity — 366' (111.6m) of 2" (50.8mm) diameter rope — drum No. 163009. Rear drum (drag) useable

length — 288' (87.8m) of 2-1/4" (57.2mm) diameter rope — drum No. 163005. The depth of cut, casting distance and digging reach may vary considerably depending on digging conditions, design of bucket and operator's skill. Maximum digging depths are attainable under ideal conditions and cannot be guaranteed.

3. Machines are equipped with wire rope to dig to a depth of 95' (29.0m), 105' (32.0m) and 115' (35.1m) for boom lengths of 160' (48.8m), 180' (54.9m) and 200' (61.0m) respectively.