

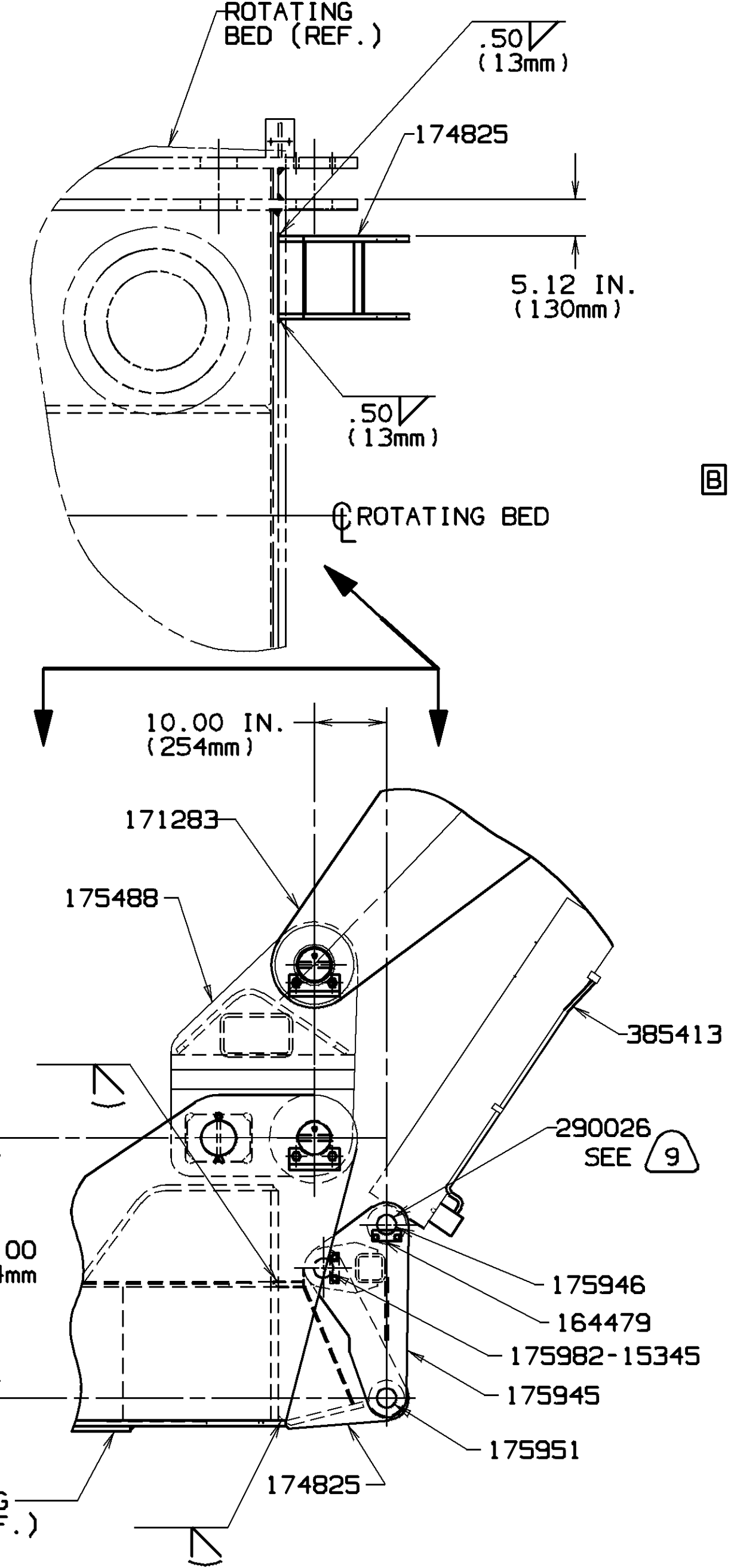
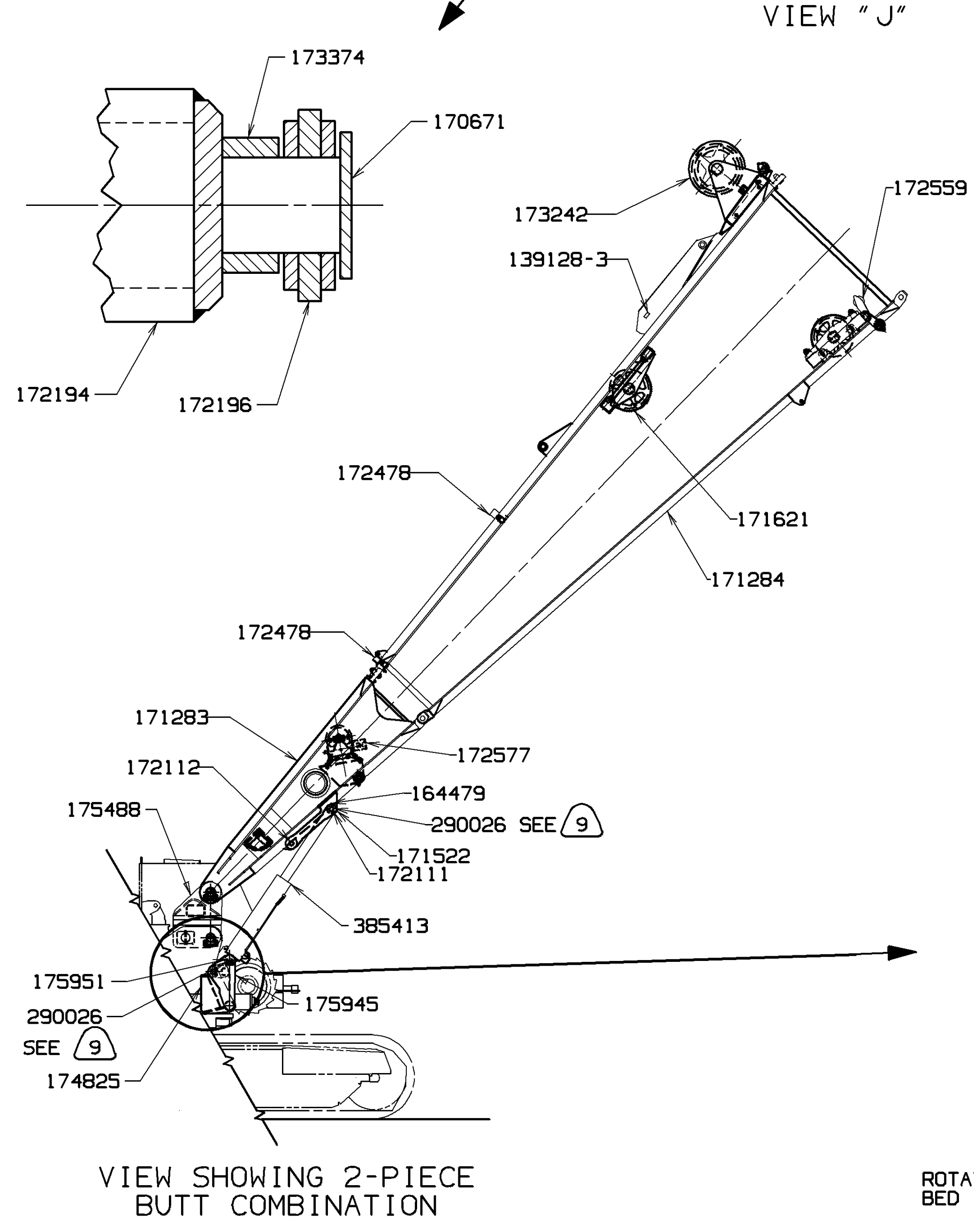
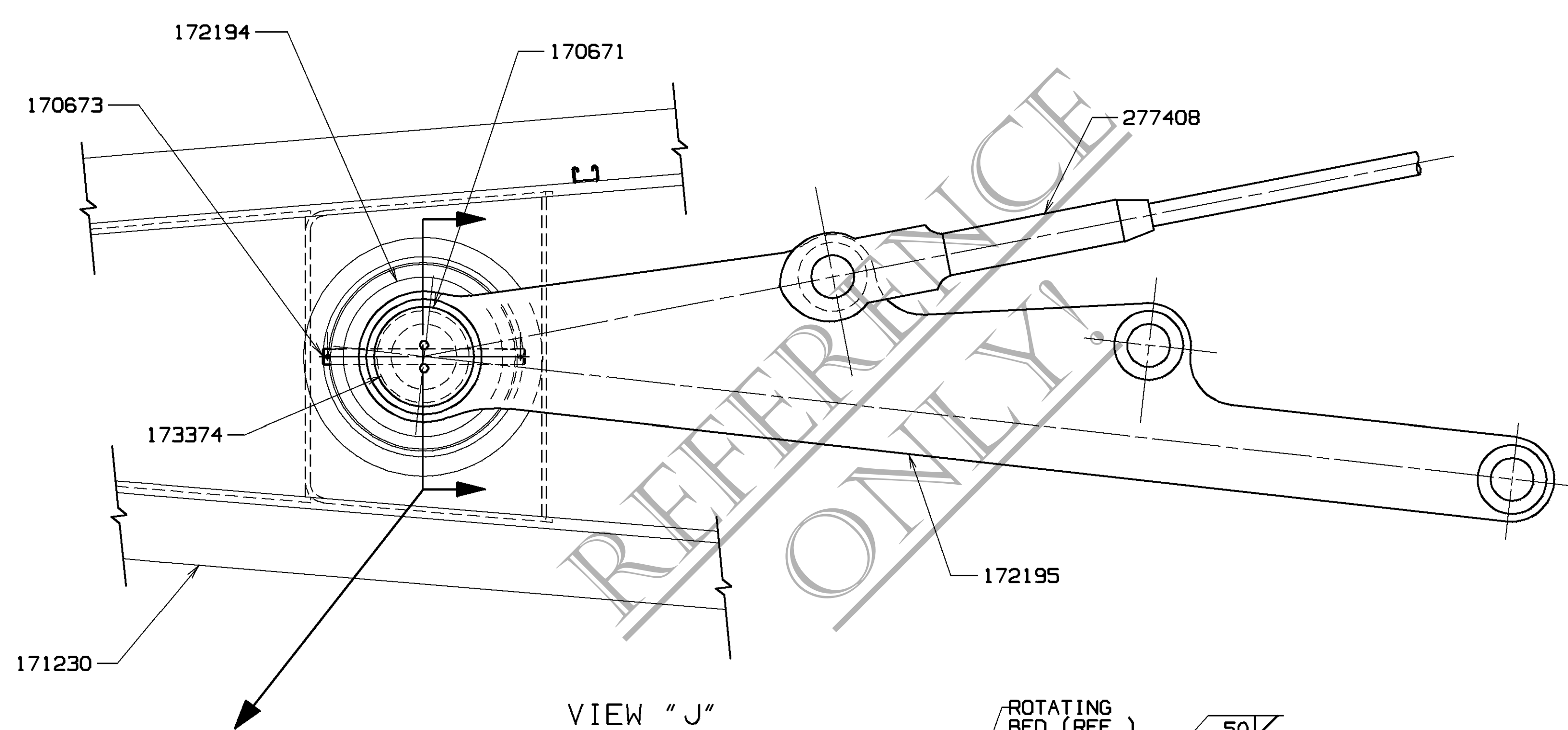
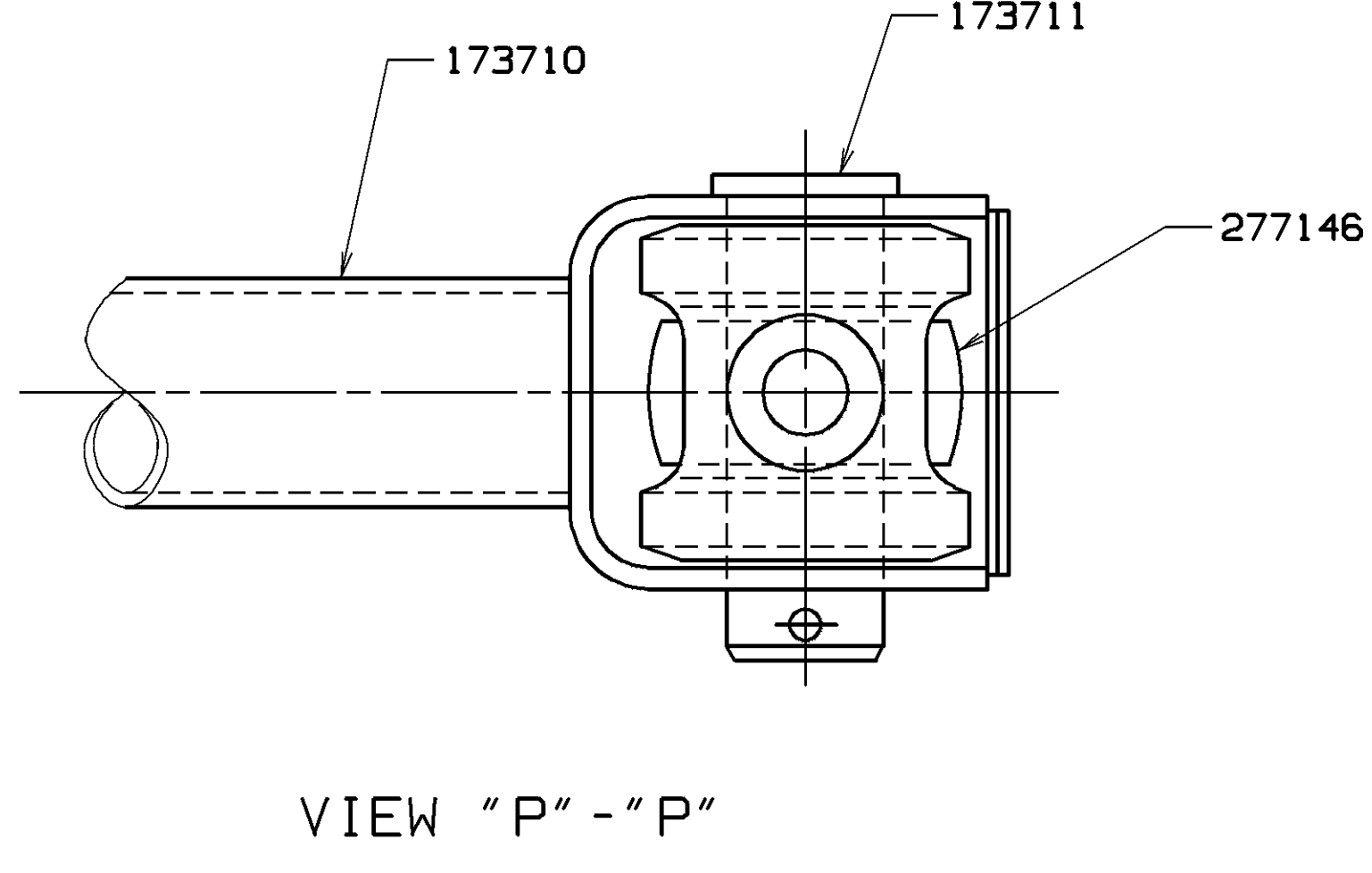
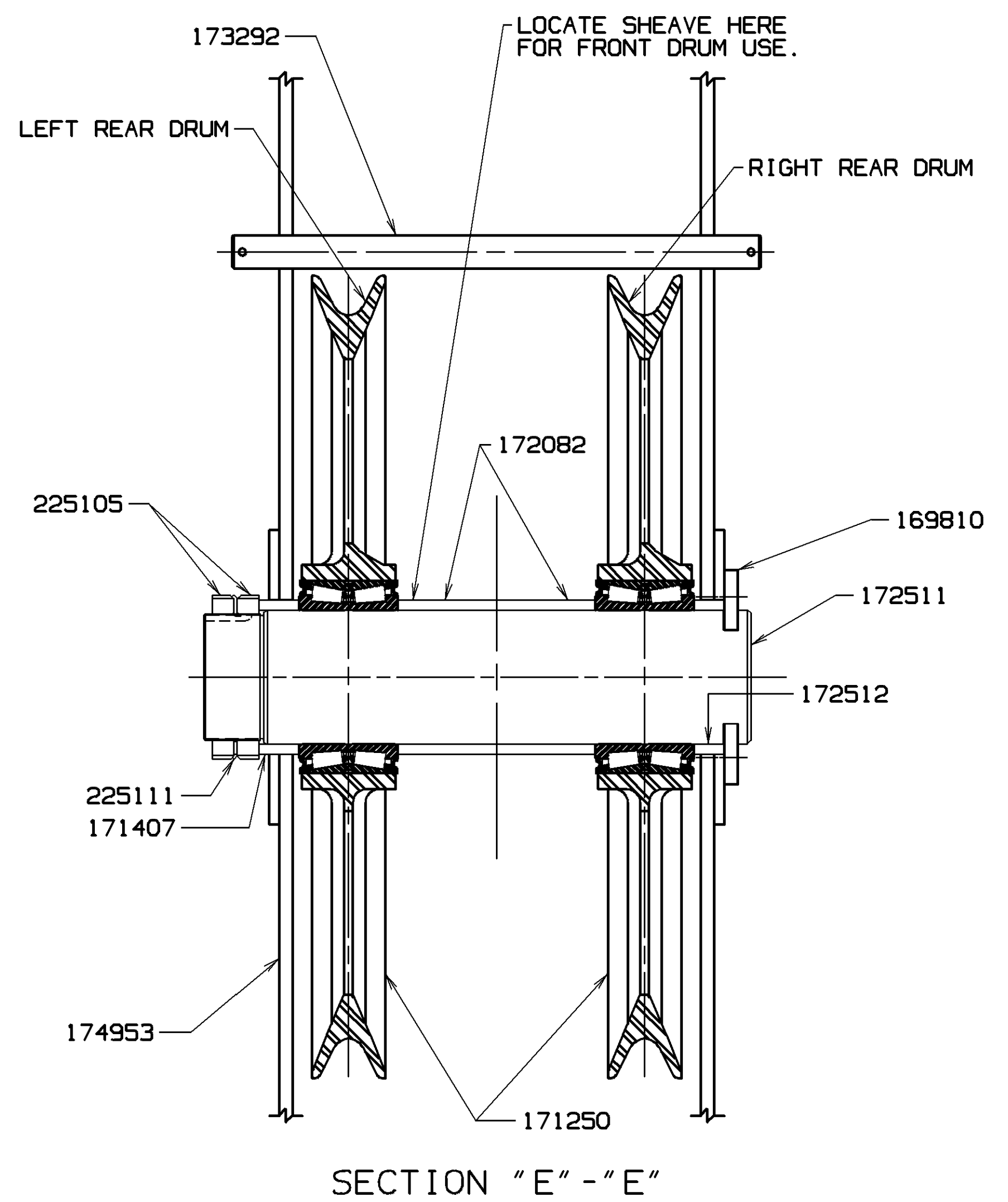
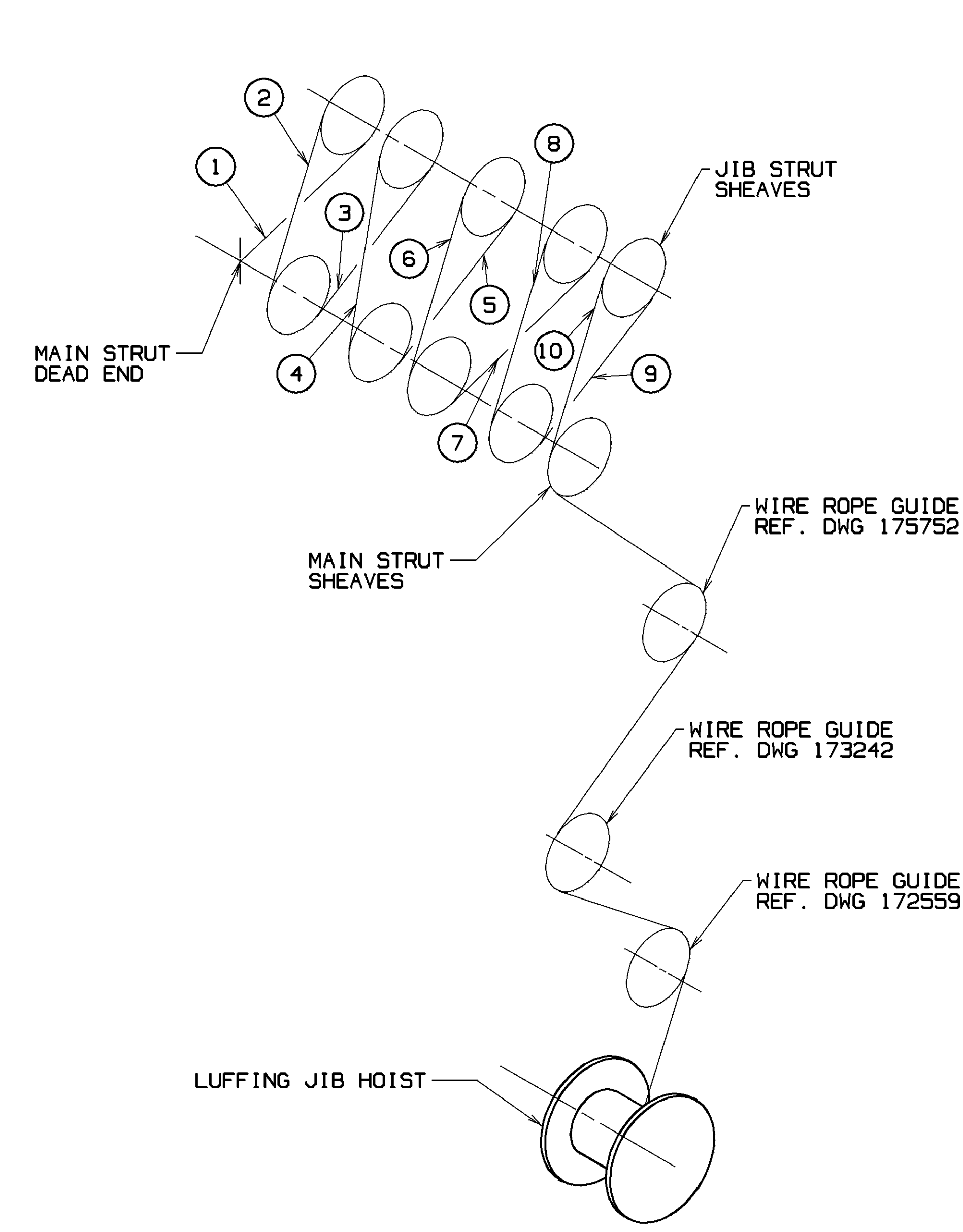
BOOM HANDLING INSTRUCTIONS				
TRAVEL SPEED NOT TO EXCEED 1/2 MPH (.80 km/h) BOOM ANGLE AT 10° OR LESS.				
GANTRY POSITION	MAX. LENGTH OF BOOM HANDLED		BOOM MAKE UP	BOOM CONDITIONS OR LIMITATIONS
	FEET	METERS		
UP	120	36.6	BUTT & INSERTS	EQUALIZER PINNED TO RAILS. CAN CANTILEVER 80 FT. (24.4 M) OF INSERTS.

BILL OF MATERIAL				
ITEM NO.	DESCRIPTION	QUANTITY	MATERIAL	UNIT OF MEAS.
1	1.125 (29mm) WIRE ROPE.			
2	ON DWG. 139117. GANTRY TIE DOWN PENDANT.			
3	ON DWG. 78145.			
4	THE COMBINATION OF BUTT SECTIONS 171283 AND 171284 REPLACE 40 FT. (12.19 M) BUTT 171230.			
5	ON DWG. 73026.			
6	REQUIRED FOR CRAWLER HANDLING.			
7	SEE JIB STOP ASSEMBLY FOR JIB STOP ERECTION PROCEDURE.			
8	REQ'D. FOR BOOM BUTT HANDLING: CAN BE USED WITH 2-PIECE BOOM BUTT ONLY. MAX. COMBINATION THAT CAN BE HANDLED WITH CYLINDER 385413 IS: BUTT SECTIONS 171283 & 171284; ROPE GUIDES 173242, 172559 & 171621; RIGGING WINCH 172577; EQUALIZER 171248; BOOM STOPS 170474 REF. AND 2 PARTS OF 1.125 (29mm) WIRE ROPE (FOR EQUALIZER HANDLING). CYLINDER MUST BE FULLY RETRACTED FOR CRANE OPERATION.			
9	INSTALL 2 BUSHINGS 290026 (1 EACH SIDE) IN LOWER PIN EYE AND 2 (1 EACH SIDE) IN UPPER PIN EYE OF CYLINDER 385413. BUSHINGS TO BE FLUSH WITH OUTSIDE FACE OF PIN EYE.			
10	PIN IN PLACE ONLY DURING EQUALIZER RELOCATION FROM GANTRY STORAGE TO BOOM BUTT EQUALIZER RAIL. PIN TO BE STOWED FOR NORMAL CRANE OPERATION.			
11	REQ'D. FOR 2 PIECE BOOM BUTT. USE LOCKTITE 242 OR EQUIVALENT ON MOUNTING SCR. THDS. AT ASSEMBLY.			
12	INSTALL WITH HEAD ON BOTTOM. WIRE END PLATE SCREWS TOGETHER.			
13	LOCATE AS REQ'D SEE SECTION "E" - "E".			
14	.875 (22mm) WIRE ROPE.			
15	SHOWN IN THE FORMAT: TOTAL PENDANTS REQ'D (BOOM PENDANTS REQ'D / JIB BACKSTAY PENDANTS REQ'D)			
16	TIGHTEN LOCKNUT SUFFICIENTLY TO CLAMP BEARING INNER RACE.			
17	STOWAGE TIMBER REQUIRED			

STOWAGE TIMBER REQUIRED		
STOWAGE CASE	TIMBERS (171697)	
#133A JIB IN #44 BOOM	FEET	METERS
70 - 80	21.3 - 24.4	16
90 - 120	27.4 - 36.6	24
130 - 160	39.6 - 48.8	32
170 - 200	51.8 - 61.0	40

STOWAGE TIMBER REQUIRED		
STOWAGE CASE	TIMBERS (171660)	
#132 JIB IN #133A JIB	FEET	METERS
40	12.19	6
60 - 80	18.29 - 24.4	12
100 - 120	30.50 - 36.6	18

- 19 IF ROTATING BED DOES NOT HAVE SHEAR BLOCKS FOR BOOM STOP ADAPTOR AS SHOWN IN VIEW Q, MODIFY PER DWG. 421150.
- 20 REFER TO SPECIFIC CAPACITY CHART FOR APPROPRIATE BOOM & JIB COMBINATIONS.
- 21 REFER TO LUFFING JIB RAISING PROCEDURE #7711A FOR RAISING & LOWERING BOOM & JIB.
- 22 IF JIB BUTT DOES NOT HAVE PADS ADDED FOR ENGAGEMENT OF ROPE GUIDE STRUT 175787, MODIFY PER DWG. 421149.
- 23 SEE CRANE ASSEMBLY & RIGGING GUIDE IN THE OPERATIONS MANUAL FOR INSTRUCTIONS ON PENDANT STOWAGE.
- 24 SPREADER LOCATIONS:
A) FOR JIBS REQUIRING ONE SPREADER: LOCATE AT THE FIRST PENDANT CONNECTION CLOSEST TO THE LUFFING JIB TOP. (REF. VIEW "P" - "P").
B) FOR JIBS REQUIRING TWO SPREADERS: LOCATE ONE AT THE FIRST PENDANT CONNECTION CLOSEST TO THE LUFFING JIB TOP AND THE SECOND SPREADER AT THE PENDANT CONNECTION CLOSEST TO THE JIB STRUT.
- 25 PIN 173711 IS USED IN CONJUNCTION WITH SPREADER 173710 (2 PINS PER SPREADER) AND REPLACES PIN SUPPLIED WITH PENDANT. (REF. VIEW "P" - "P").
- 26 STAMP DATA ON 181503 AND INSTALL AFTER FINAL PAINTING.
- 27 PIN 564094 IS TO BE USED FOR MAIN STRUT ERECTION ONLY. IF WEDGE SOCKET 182233 IS USED FOR ANY LOAD LIFTING LINE, PIN 563960 (REF.) IS REQUIRED.
- 28 (12 FT.)-(3.66 M)
- 29 (28 FT.)-(8.53 M)
- 30 USED ON LUFFING JIB TOP - SEE 23



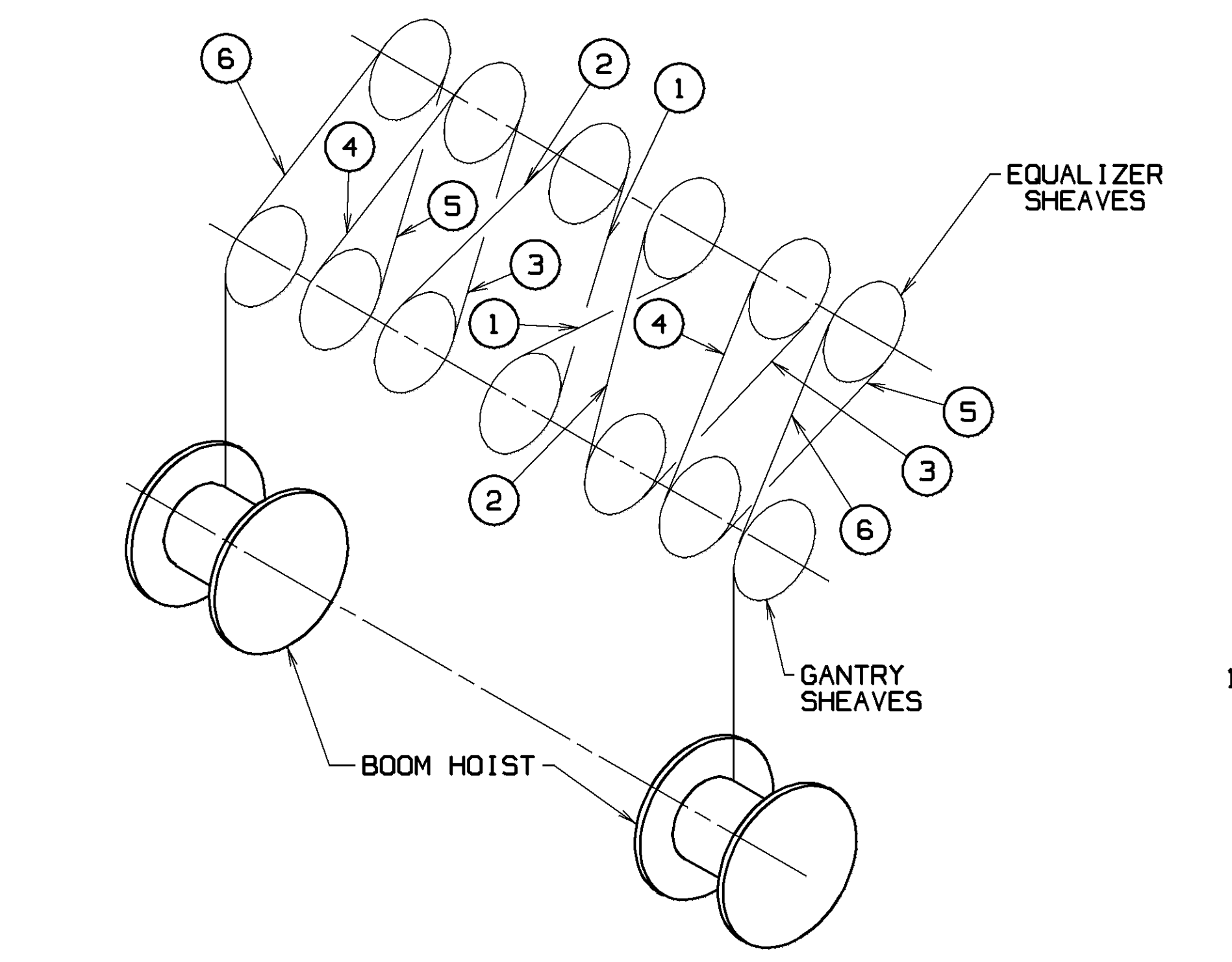
- 31 REFER TO THE CAPACITY CHART TO DETERMINE IF THE BOOM POINT ASSEMBLY MUST BE REMOVED.
- 32 FOR ANY GIVEN LUFFING JIB LENGTH, THE MINIMUM LENGTH OF BOOM REQUIRED TO FOLD THE LUFFING JIB IS EQUAL TO THE LENGTH OF THE LUFFING JIB PLUS 15 FEET.
- 33 FOR USE IN ALIGNMENT OF JIB SECTIONS DURING SET UP. SEE OPERATORS MANUAL FOR PROCEDURE.
- 34 FOR USE IN ALIGNMENT OF 175776 AND 175903 DURING SET UP. SEE OPERATORS MANUAL FOR PROCEDURE.

LUFFING JIB HOIST REEVING DIAGRAM FOR 10 PART LINE SEE 11

1100 FEET (335.3 M) OF .875" (22mm) DYFORM-6 (719335) - B.S. 87,600 LBS. (39,735 kg)

OR
ALTERNATE WIRE ROPE
1100 FEET (335.3 M) OF .875" (22mm)-6 X 26 WARRINGTON SEALE, EXTRA IMPROVED PLOW STEEL, ALTERNATE LAY, IWRC (719094) - B.S. 79,600 LBS. (36,106 kg)

OR
ALTERNATE WIRE ROPE
1100 FEET (335.3 M) OF .875" (22mm)-6 X 26 WARRINGTON SEALE, EXTRA IMPROVED PLOW STEEL, REGULAR LAY, IWRC (719035) - B.S. 79,600 LBS. (36,106 kg)



BOOM HOIST REEVING DIAGRAM FOR 12 PART LINE

975 FEET (297.2 M) OF 1.00" (26mm)-6 X 26 WARRINGTON SEALE, EXTRA IMPROVED PLOW STEEL, ALTERNATE LAY, IWRC (719095) - B.S. 103,400 LBS. (46,900 kg)

OR
ALTERNATE WIRE ROPE
975 FEET (297.2 M) OF 1.00" (26mm)-6 X 26 WARRINGTON SEALE, EXTRA IMPROVED PLOW STEEL, REGULAR LAY, IWRC (719276) - B.S. 103,400 LBS. (46,900 kg)

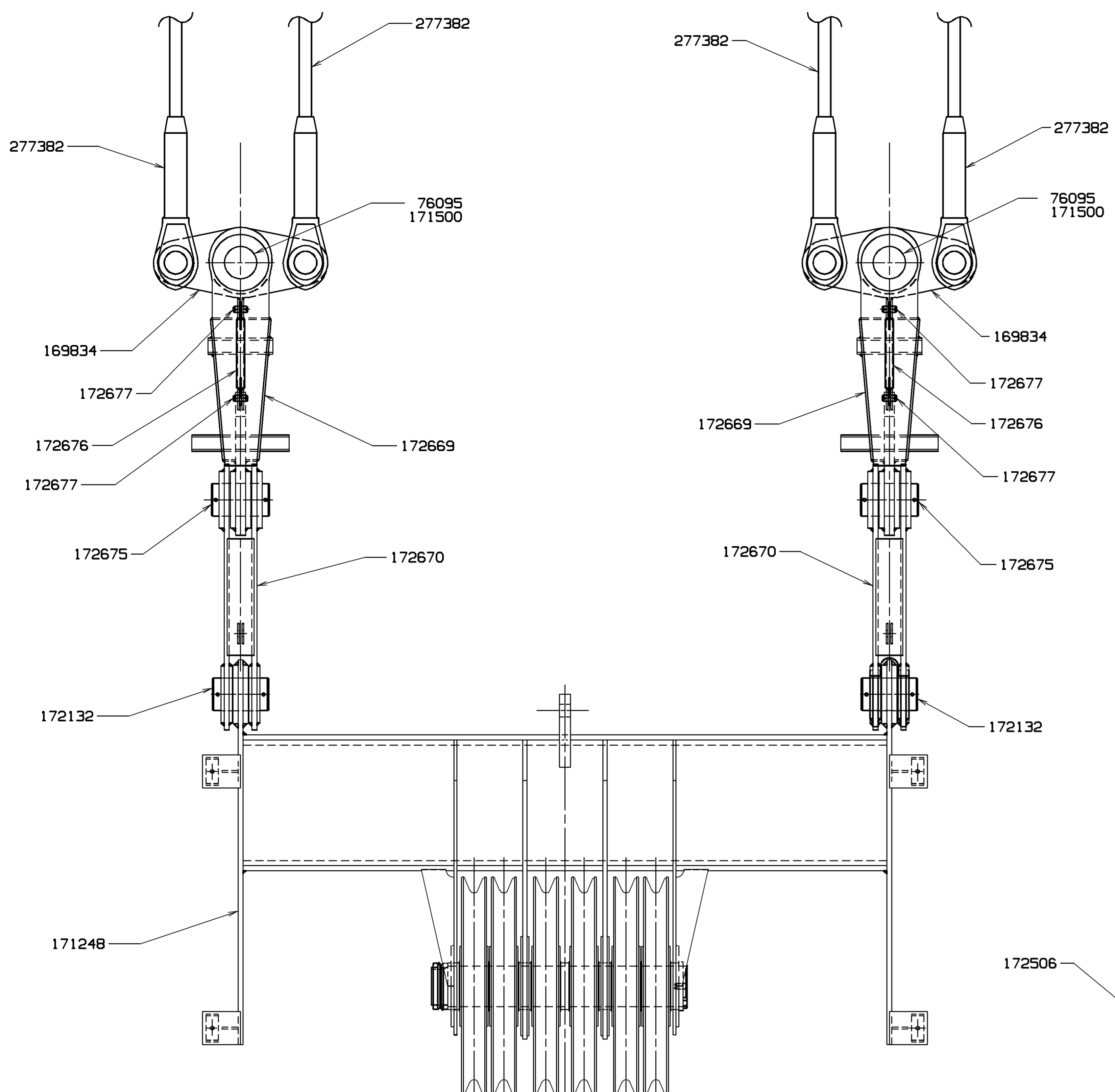
OR
ALTERNATE WIRE ROPE
975 FEET (297.2 M) OF 1.00" (26mm) DYFORM-6 (719359) - B.S. 113,800 LBS. (51,620 kg)

TOLERANCE UNLESS OTHERWISE SPECIFIED		MACHINING	
DECIMAL PLACES	FRACTIONS	DECIMAL PLACES	FRACTIONS
(1) PLACE 0.0	± 1/100	± 0.010	± 1/100
(2) PLACE 0.00	± 1/1000	± 0.005	± 1/200
(3) PLACE 0.000	± 1/10000	± 0.002	± 1/500
ANGLES	± 1/20	± 1/20	± 1/20

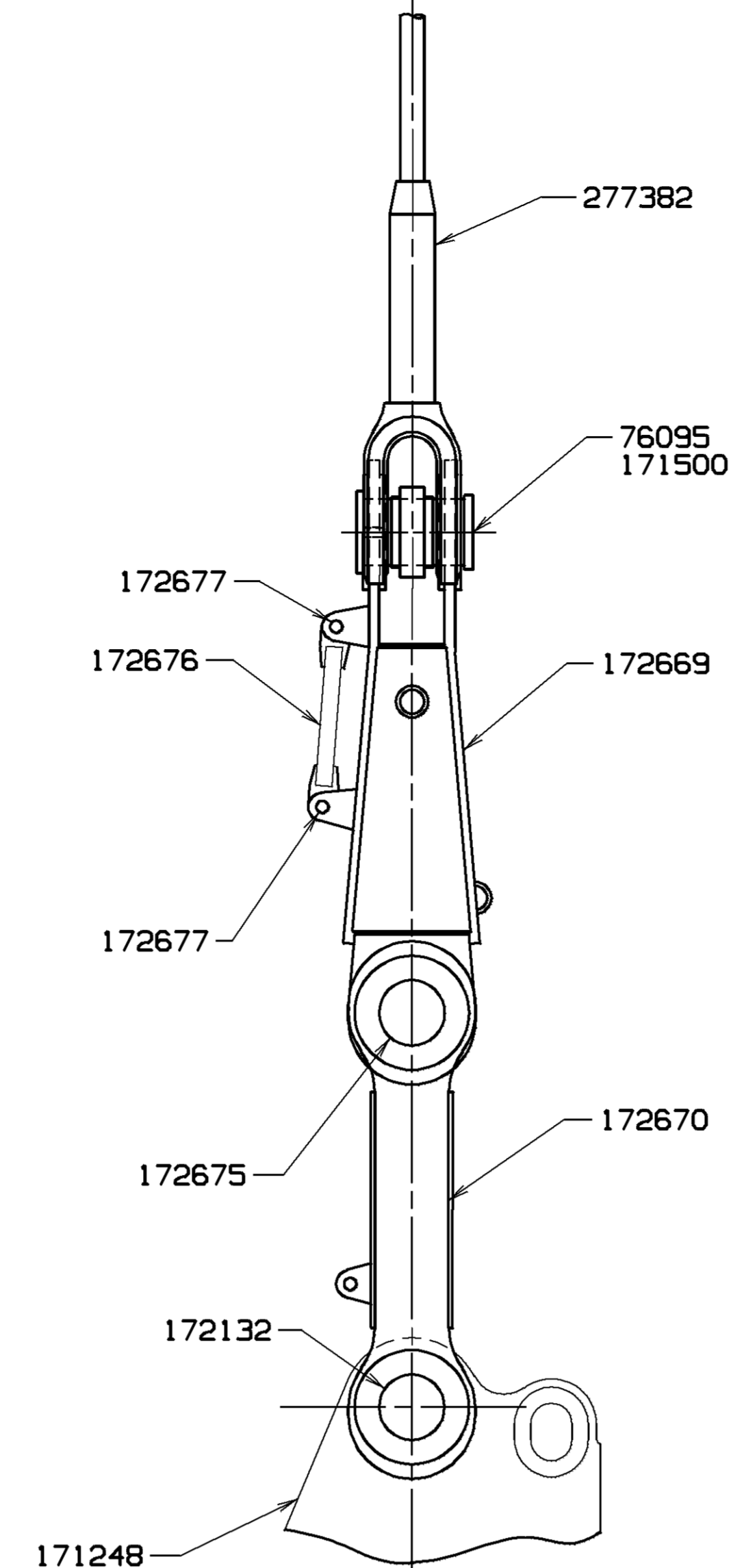
THIS PRINT REMAINS THE PROPERTY OF WHITWOC CRANES, INC. ALL INFORMATION CONTAINED HEREIN IS CONFIDENTIAL. IT IS LOANED, SUBJECT TO RETURN UPON DEMAND, AND ON EXPRESS CONDITION THAT IT IS NOT TO BE COPIED OR USED DIRECTLY OR INDIRECTLY IN ANY MANNER DETRIMENTAL TO OUR INTERESTS.	DRAWN BY: LS CHECKED BY: LS APPROVED BY: MS	MANTOVOC CRANES, INC. Mantovoc, Wisconsin MODEL-M-250 M-250 SERIES 2	LUFFING JIB RIGGING ASSEMBLY FOLD UNDER (USA) #44 BOOM/#133A JIB 1.50 SWAGED PENDANTS
--	---	---	--

BILL OF MATERIAL				ASSEMBLIES USED ON
QTY	DESCRIPTION	MATERIAL	UNIT	

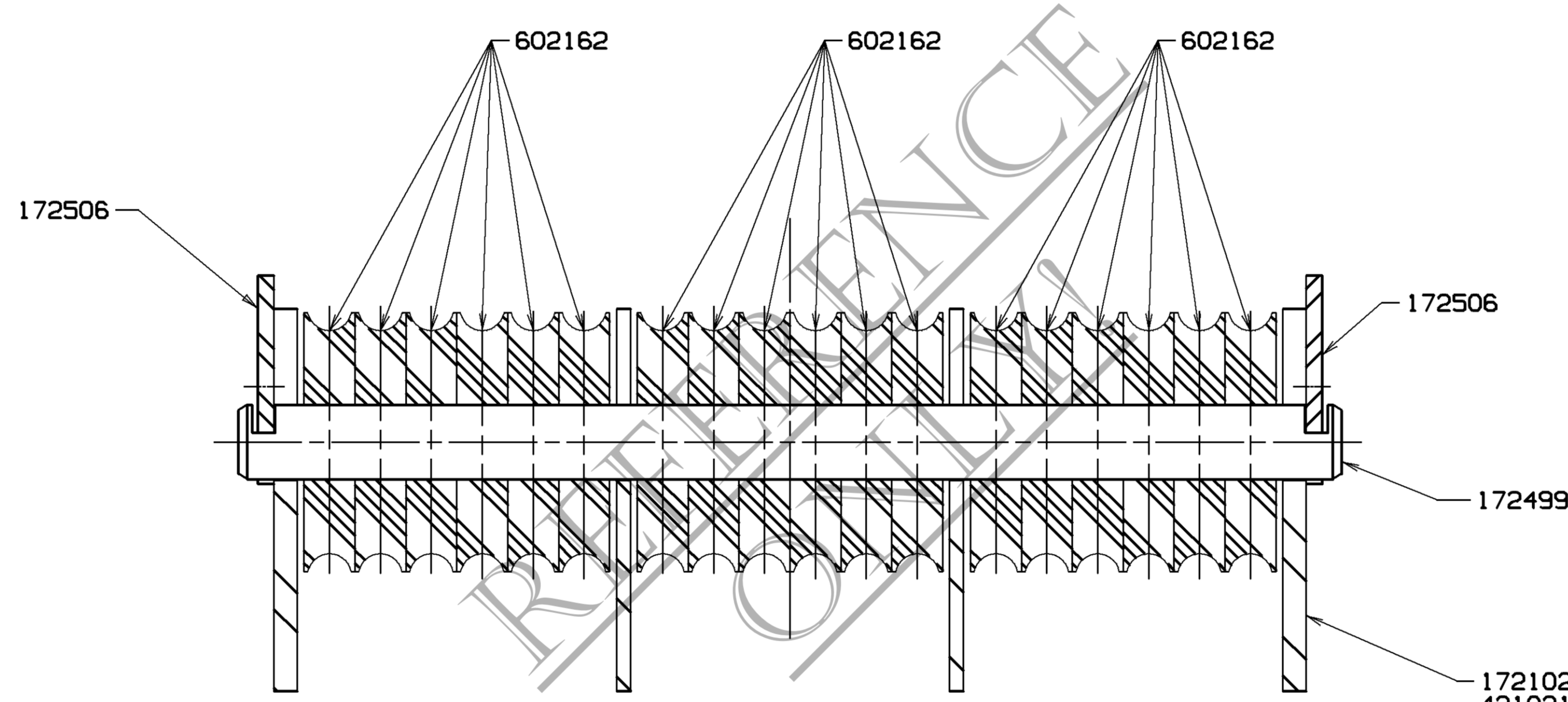
REVISIONS	
1	1-15-94 LS WAS SHT 3 OF 5
2	2-17-97 P60 WAS 172504 290025
3	3 WAS 165547/189576/564096



VIEW "A" - "A"

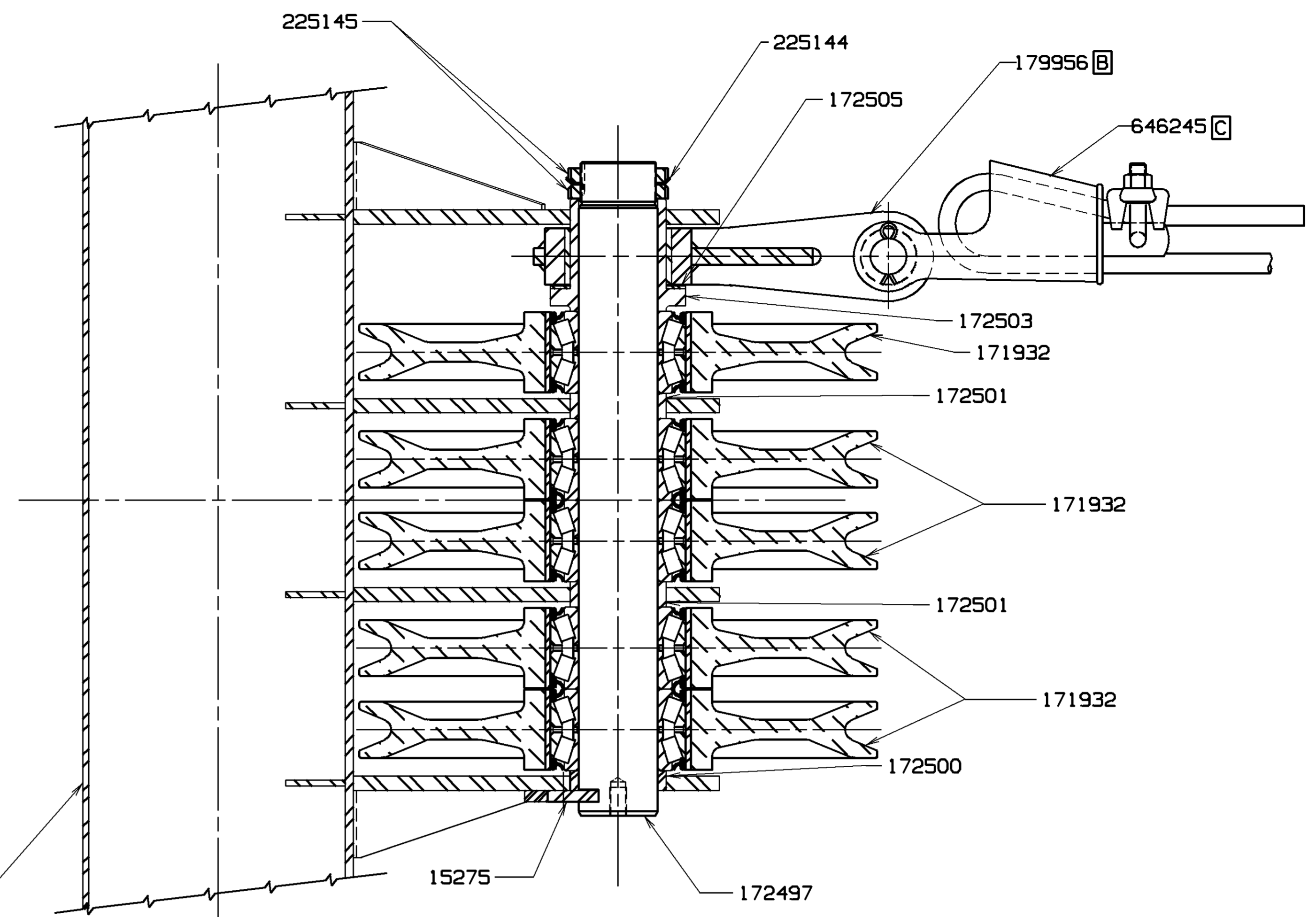


171248

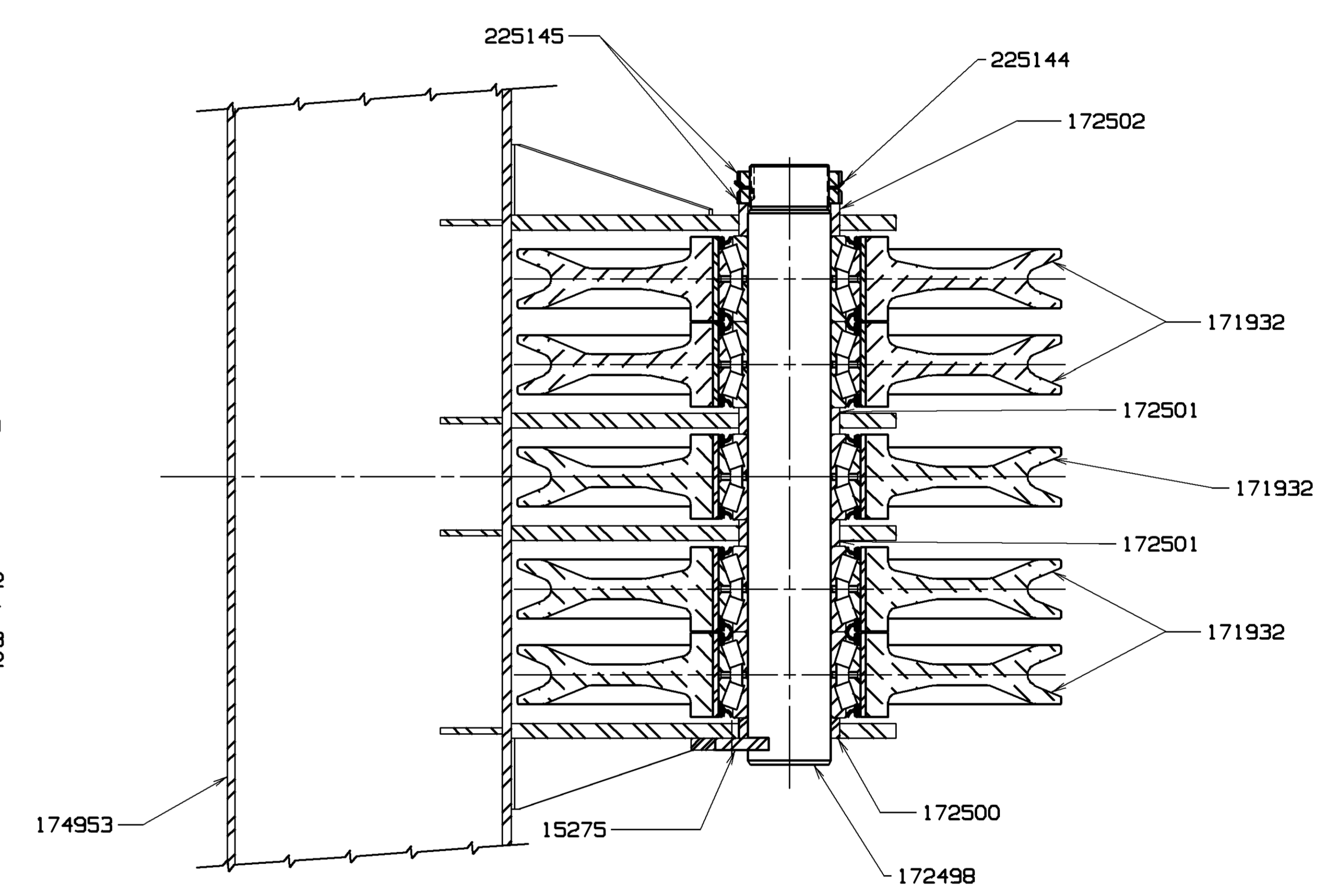


SECTION IS THE SAME FOR 174953 AND 174954

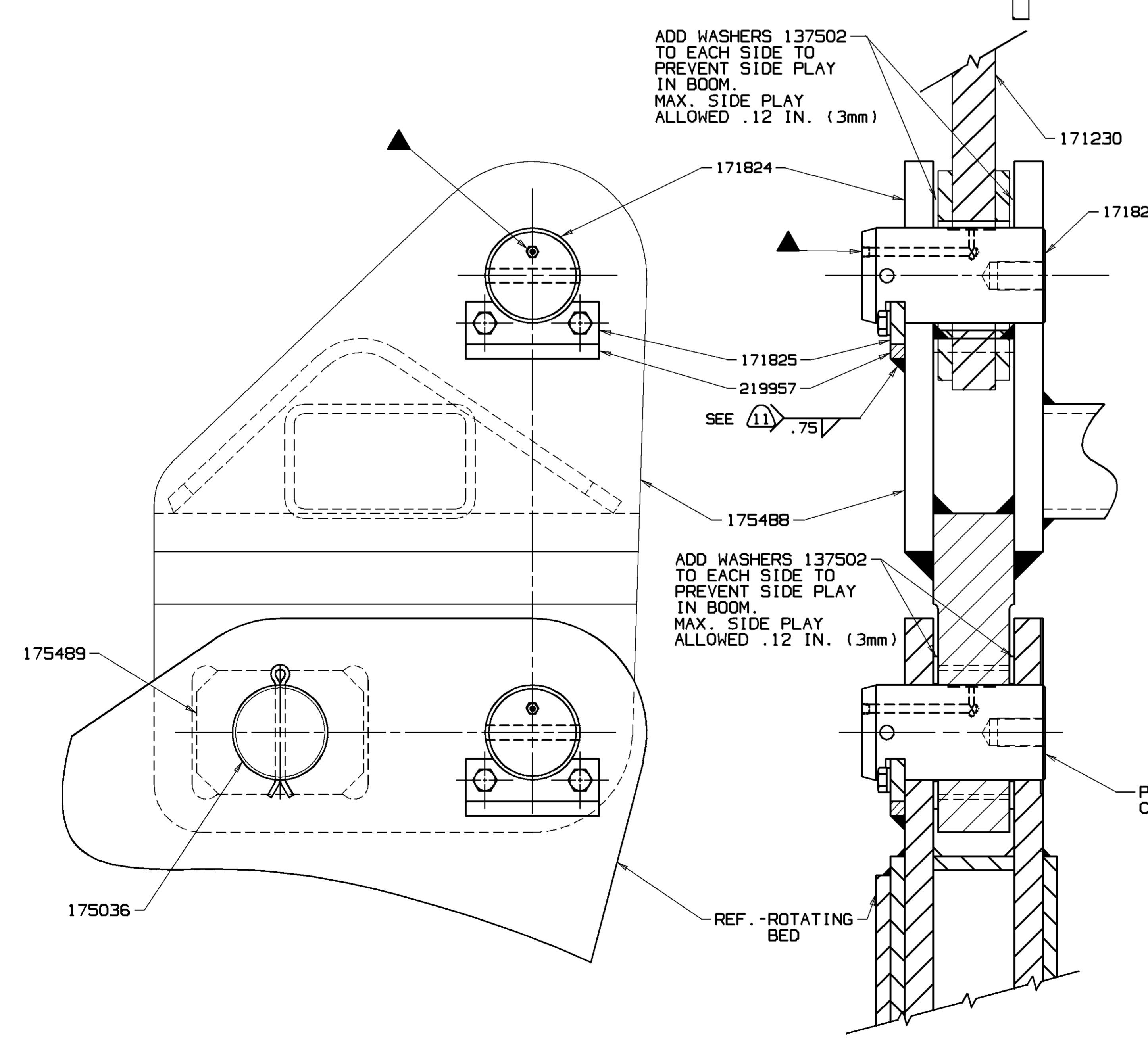
SECTION "F" - "F"



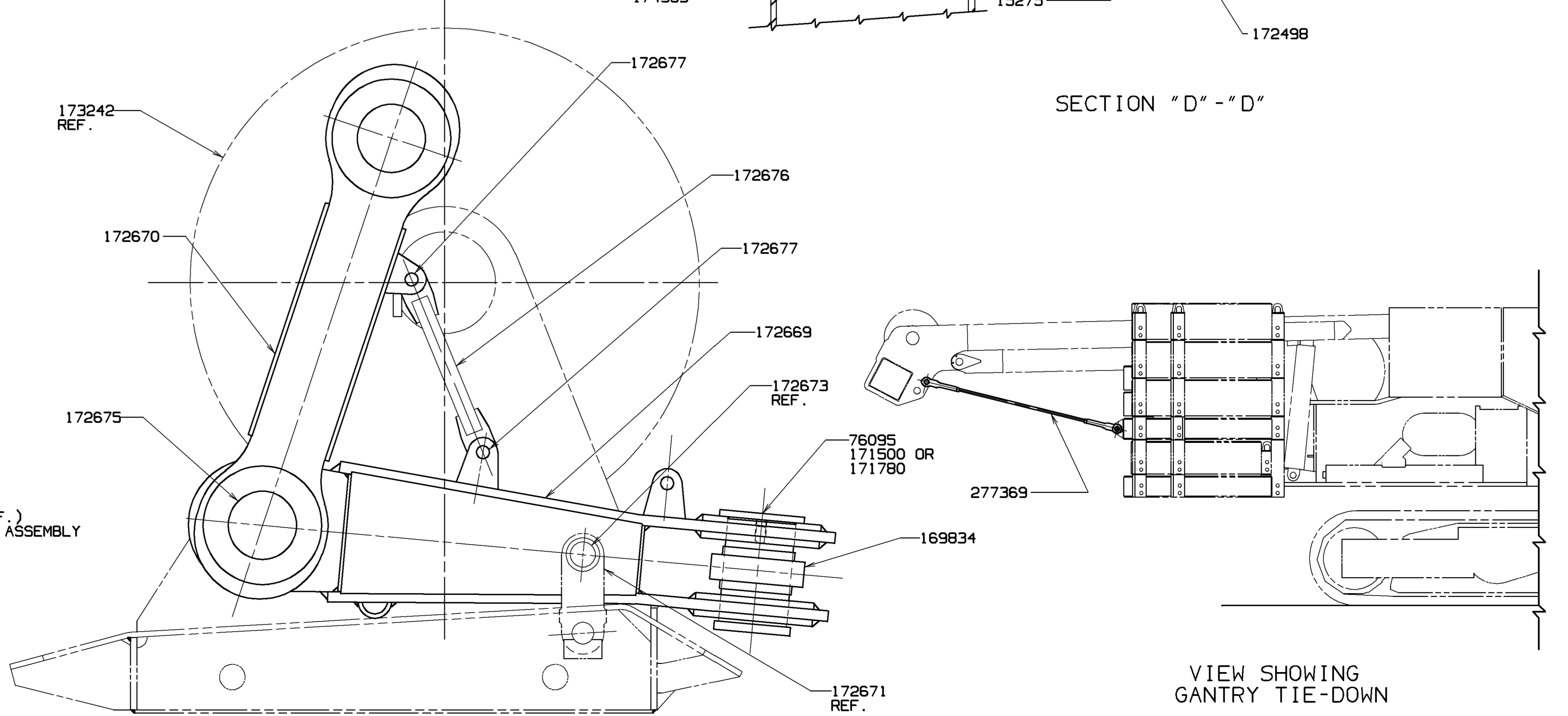
SECTION "C" - "C"



SECTION "D" - "D"



SECTION "B" - "B"



VIEW SHOWING GANTRY TIE-DOWN

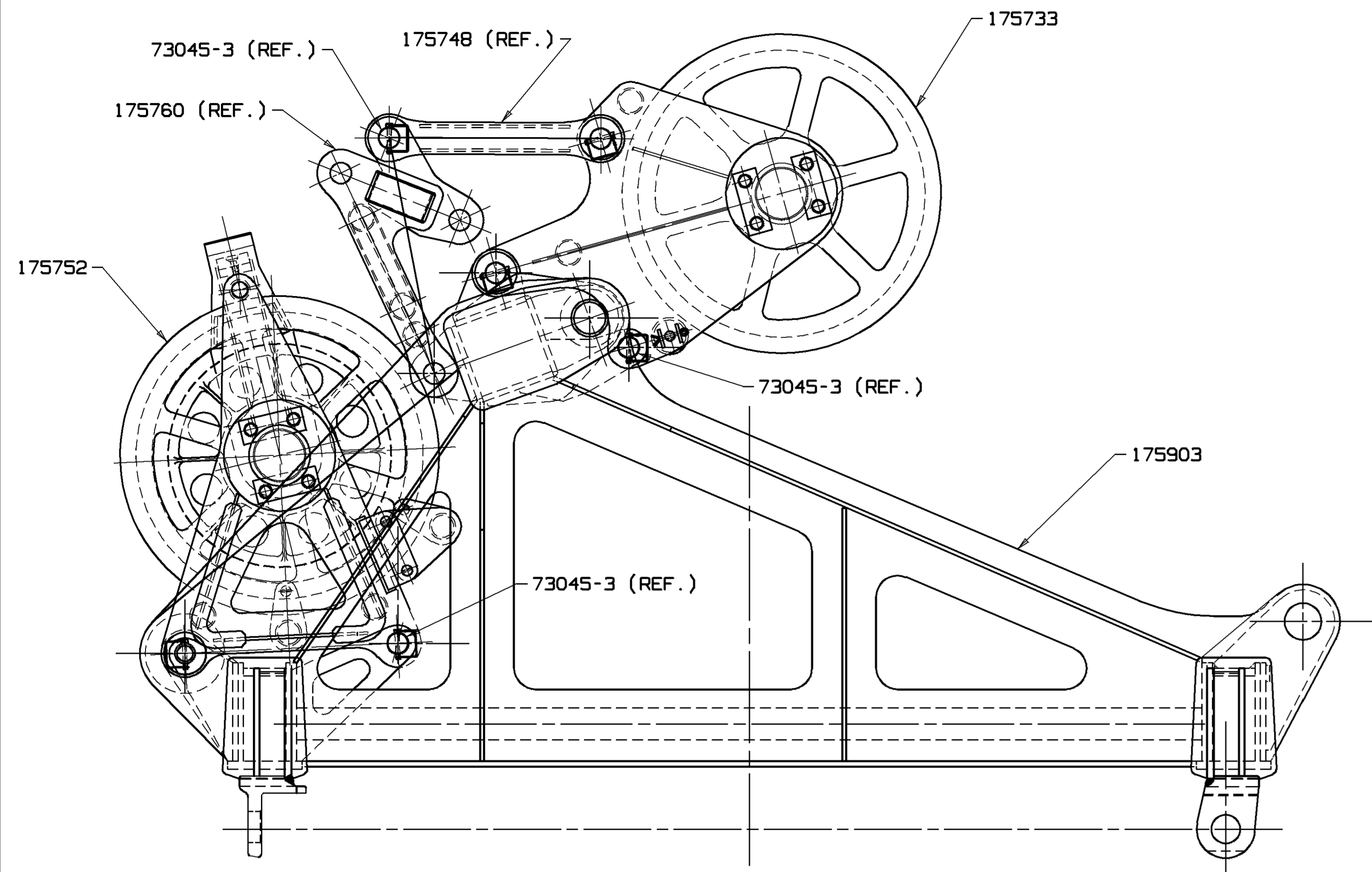
LINK STORAGE FOR SHIPPING

TOLERANCE UNLESS OTHERWISE SPECIFIED		MATERIAL		FINISH	
DECIMAL PLACES	FABRICATION	DR. LS	MOD. M-250	DR. LS	MOD. M-250
(1) .00	± .10	171500	171500	171500	171500
(2) .01	± .050	171500	171500	171500	171500
(3) .005	± .005	171500	171500	171500	171500

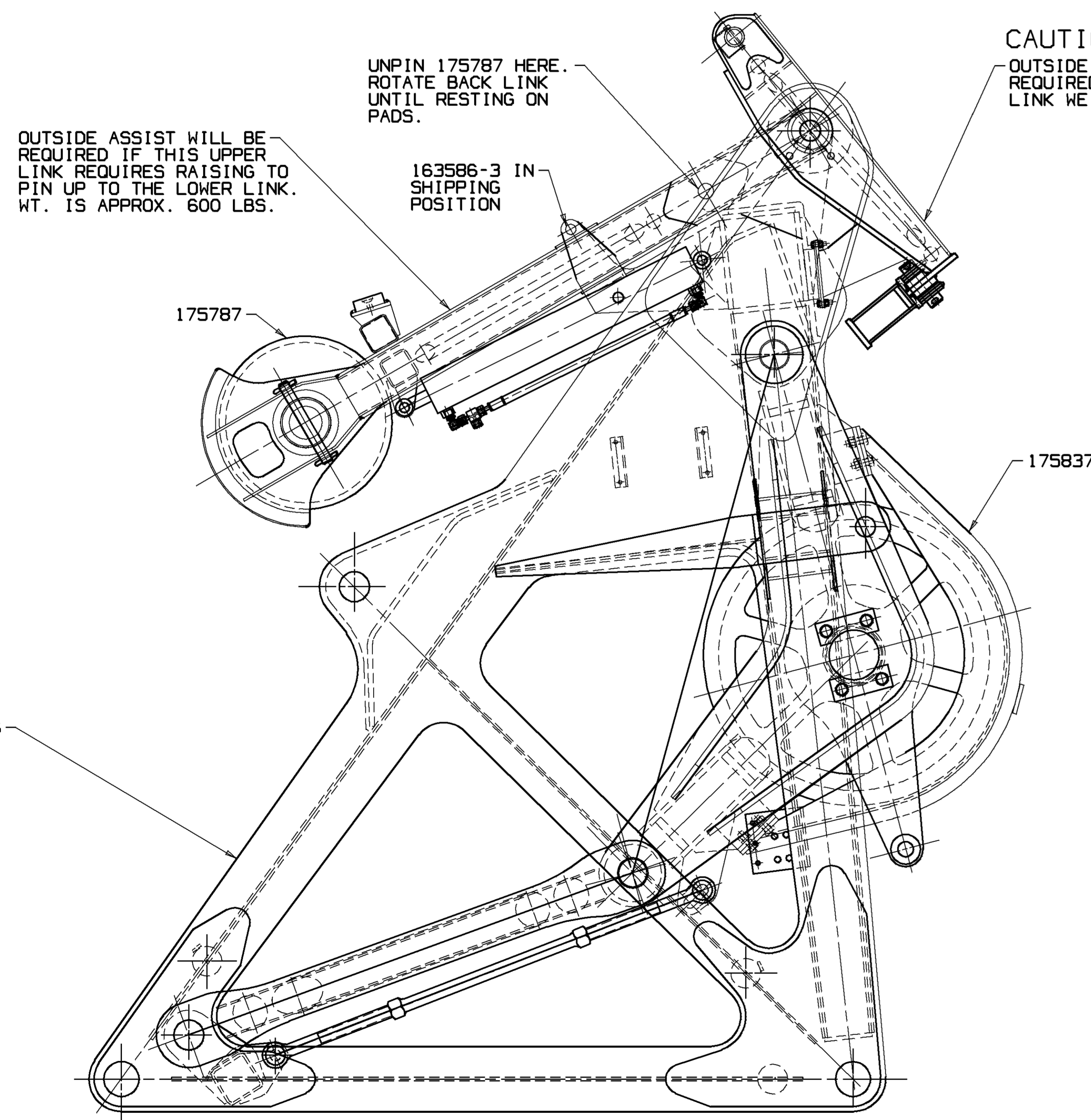
175501
SHT 3 OF 6

DATE 7-12-94
PATTERN NO.

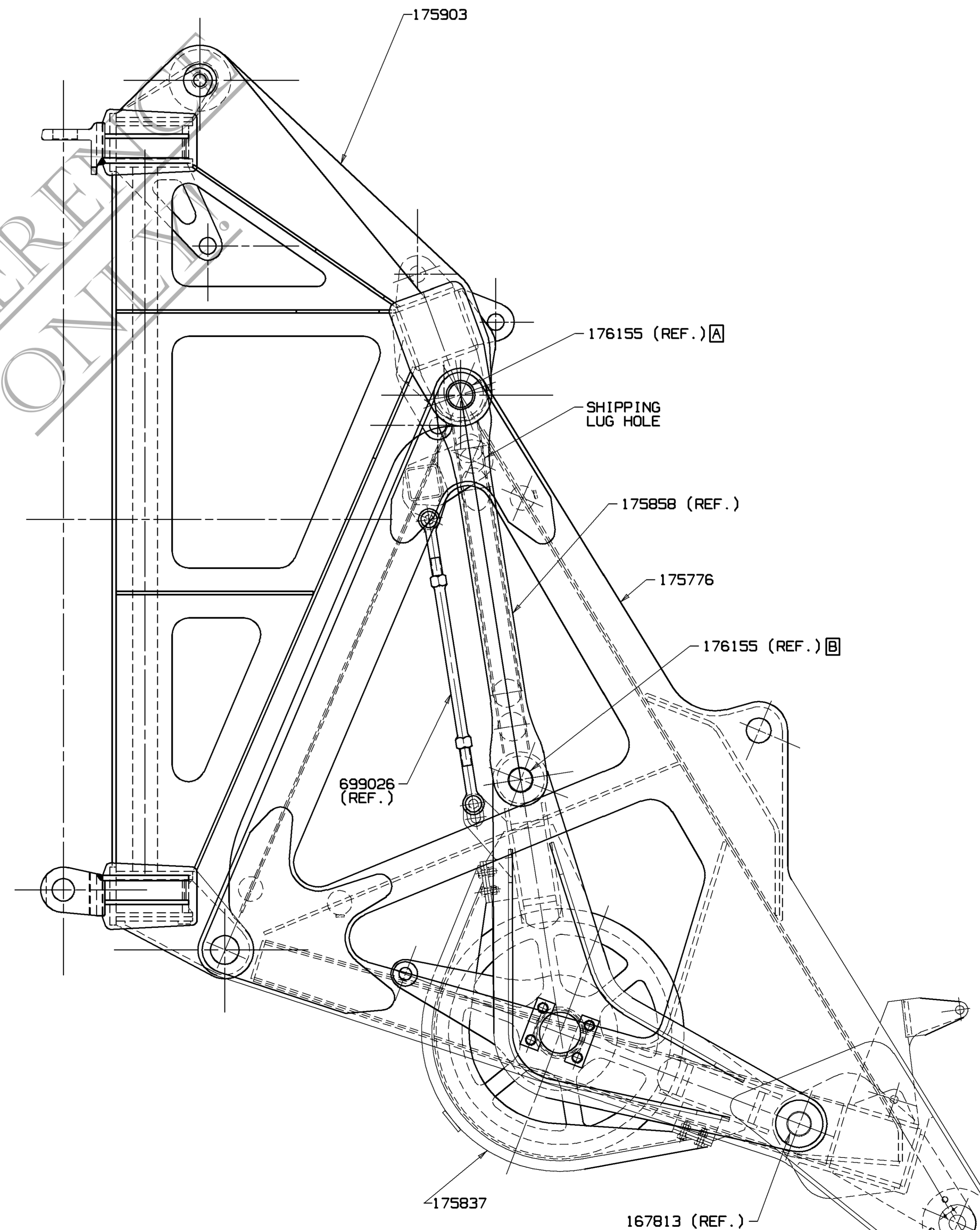
175501
SHT 3 OF 6



ITEMS ARE SHOWN IN SHIPPING POSITION



ITEMS ARE SHOWN IN SHIPPING POSITION



VIEW SHOWING 175837 IN WORKING POSITION. SEE PROCEDURE FOR COMPLETE REMOVAL OR FOR LOCATION IN SHIPPING POSITION.

BILL OF MATERIAL				ASSEMBLIES USED ON
QTY	REF.	DESCRIPTION	MATERIAL	QTY

PROCEDURE TO MOVE BOOM POINT ASSEMBLY TO SHIPPING POSITION

- 1-TAKE UP ON TURNBUCKLE 699026 (REF.) TO REMOVE LOAD FROM PINS 176155 (REF.) AT LOWER JIB ADAPTOR 175903.
- 2-REMOVE PINS 176155 (REF.) HOLDING LINK 175858 (REF.) TO LOWER JIB ADAPTOR 175903.
- 3-BACK OFF TURNBUCKLE 699026 (REF.) TO MOVE BOOM POINT 175837 UNTIL LINK 175858 (REF.) PIN HOLES ALIGN WITH SHIPPING LUG HOLES AND INSERT PINS 176155 (REF.).
- 4-REVERSE ABOVE PROCEDURE TO MOVE BOOM POINT ASSEMBLY TO WORKING POSITION.

PROCEDURE TO REMOVE BOOM POINT ASSEMBLY

- 1-TAKE UP ON TURNBUCKLE 699026 (REF.) TO REMOVE LOAD FROM PINS 176155 (REF.) AT LOWER JIB ADAPTOR 175903.
- 2-REMOVE PINS 176155 (REF.) HOLDING LINK 175858 (REF.) TO LOWER JIB ADAPTOR 175903.
- 3-BACK OFF TURNBUCKLE 699026 (REF.) TO LOWER BOOM POINT 175837 UNTIL LINK 175858 (REF.) PIN HOLES ALIGN WITH SHIPPING LUG HOLES AND INSERT PINS 176155 (REF.).
- 4-POSITION BOOM POINT OVER SECURE BLOCKING.
- 5-USING TURNBUCKLE 699026 (REF.), REMOVE LOAD FROM PINS 176155 (REF.) BETWEEN LINK 175858 (REF.) AND BOOM POINT FRAME.
- 6-REMOVE PINS 176155 (REF.) AND USING TURNBUCKLE 699026 (REF.) LOWER THE BOOM POINT TO THE BLOCKING.
- 7-REMOVE PINS 167813 (REF.) BETWEEN THE BOOM POINT AND ADAPTOR 175776.
- 8-REMOVE TURNBUCKLE 699026 (REF.) AND LINK 175858 (REF.) FROM ADAPTOR 175776.

PROCEDURE TO MOVE UPPER WIRE ROPE GUIDE 175733 AND LOWER WIRE ROPE GUIDE 175752 TO SHIPPING POSITION

- 1-HOLDING ASSEMBLY 175733 IN POSITION, REMOVE PINS 73045-3 (REF.) BETWEEN LINKS 175748 (REF.) AND 175760 (REF.).
- 2-ROTATE ASSEMBLY 175733 TO SHIPPING POSITION AND PIN IN PLACE WITH PINS 73045-3 (REF.).
- 3-HOLDING ASSEMBLY 175752 IN POSITION, REMOVE PINS 73045-3 (REF.) BETWEEN ASSEMBLY 175752 AND LINK 175760 (REF.).
- 4-ROTATE LINK 175760 (REF.) AND PIN IN SHIPPING POSITION TO LINK 175748 (REF.) AS SHOWN WITH PINS 73045-3 (REF.).
- 5-ROTATE ASSEMBLY 175752 TO SHIPPING POSITION AND PIN IN PLACE WITH PINS 73045-3 (REF.).
- 6-REVERSE ABOVE PROCEDURE TO MOVE ASSEMBLIES 175752 AND 175733 TO WORKING POSITION.

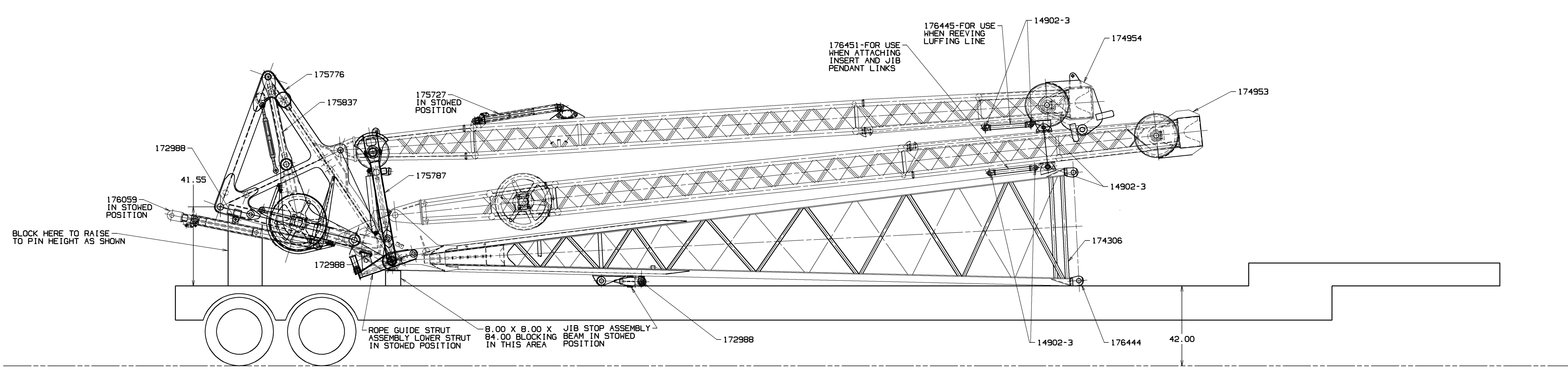
REV	DATE	DESCRIPTION
B	10-94	LS
A		WAS
		167813 (REF.)
C	11-18-94	LS
		WAS SHT 5
		OF 5

DATE: 175501
SHT 5 OF 6

TOLERANCE UNLESS OTHERWISE SPECIFIED		MATERIAL		FINISH	
DECIMAL PLACES	FABRICATION	DESCRIPTION	MANUFACTURER	FINISH	FINISH
(1) .000	± .000	10 PERFT	10 PERFT	10 PERFT	10 PERFT
(2) .010	± .010	10 PERFT	10 PERFT	10 PERFT	10 PERFT
(3) .030	± .030	10 PERFT	10 PERFT	10 PERFT	10 PERFT
(4) .050	± .050	10 PERFT	10 PERFT	10 PERFT	10 PERFT
(5) .070	± .070	10 PERFT	10 PERFT	10 PERFT	10 PERFT
(6) .090	± .090	10 PERFT	10 PERFT	10 PERFT	10 PERFT
(7) .120	± .120	10 PERFT	10 PERFT	10 PERFT	10 PERFT
(8) .150	± .150	10 PERFT	10 PERFT	10 PERFT	10 PERFT
(9) .200	± .200	10 PERFT	10 PERFT	10 PERFT	10 PERFT
(10) .250	± .250	10 PERFT	10 PERFT	10 PERFT	10 PERFT
(11) .300	± .300	10 PERFT	10 PERFT	10 PERFT	10 PERFT
(12) .375	± .375	10 PERFT	10 PERFT	10 PERFT	10 PERFT
(13) .450	± .450	10 PERFT	10 PERFT	10 PERFT	10 PERFT
(14) .500	± .500	10 PERFT	10 PERFT	10 PERFT	10 PERFT
(15) .625	± .625	10 PERFT	10 PERFT	10 PERFT	10 PERFT
(16) .750	± .750	10 PERFT	10 PERFT	10 PERFT	10 PERFT
(17) .875	± .875	10 PERFT	10 PERFT	10 PERFT	10 PERFT
(18) 1.000	± 1.000	10 PERFT	10 PERFT	10 PERFT	10 PERFT
(19) 1.250	± 1.250	10 PERFT	10 PERFT	10 PERFT	10 PERFT
(20) 1.500	± 1.500	10 PERFT	10 PERFT	10 PERFT	10 PERFT
(21) 1.750	± 1.750	10 PERFT	10 PERFT	10 PERFT	10 PERFT
(22) 2.000	± 2.000	10 PERFT	10 PERFT	10 PERFT	10 PERFT
(23) 2.500	± 2.500	10 PERFT	10 PERFT	10 PERFT	10 PERFT
(24) 3.000	± 3.000	10 PERFT	10 PERFT	10 PERFT	10 PERFT
(25) 3.500	± 3.500	10 PERFT	10 PERFT	10 PERFT	10 PERFT
(26) 4.000	± 4.000	10 PERFT	10 PERFT	10 PERFT	10 PERFT
(27) 4.500	± 4.500	10 PERFT	10 PERFT	10 PERFT	10 PERFT
(28) 5.000	± 5.000	10 PERFT	10 PERFT	10 PERFT	10 PERFT
(29) 5.500	± 5.500	10 PERFT	10 PERFT	10 PERFT	10 PERFT
(30) 6.000	± 6.000	10 PERFT	10 PERFT	10 PERFT	10 PERFT
(31) 6.500	± 6.500	10 PERFT	10 PERFT	10 PERFT	10 PERFT
(32) 7.000	± 7.000	10 PERFT	10 PERFT	10 PERFT	10 PERFT
(33) 7.500	± 7.500	10 PERFT	10 PERFT	10 PERFT	10 PERFT
(34) 8.000	± 8.000	10 PERFT	10 PERFT	10 PERFT	10 PERFT
(35) 8.500	± 8.500	10 PERFT	10 PERFT	10 PERFT	10 PERFT
(36) 9.000	± 9.000	10 PERFT	10 PERFT	10 PERFT	10 PERFT
(37) 9.500	± 9.500	10 PERFT	10 PERFT	10 PERFT	10 PERFT
(38) 10.000	± 10.000	10 PERFT	10 PERFT	10 PERFT	10 PERFT
(39) 10.500	± 10.500	10 PERFT	10 PERFT	10 PERFT	10 PERFT
(40) 11.000	± 11.000	10 PERFT	10 PERFT	10 PERFT	10 PERFT
(41) 11.500	± 11.500	10 PERFT	10 PERFT	10 PERFT	10 PERFT
(42) 12.000	± 12.000	10 PERFT	10 PERFT	10 PERFT	10 PERFT
(43) 12.500	± 12.500	10 PERFT	10 PERFT	10 PERFT	10 PERFT
(44) 13.000	± 13.000	10 PERFT	10 PERFT	10 PERFT	10 PERFT
(45) 13.500	± 13.500	10 PERFT	10 PERFT	10 PERFT	10 PERFT
(46) 14.000	± 14.000	10 PERFT	10 PERFT	10 PERFT	10 PERFT
(47) 14.500	± 14.500	10 PERFT	10 PERFT	10 PERFT	10 PERFT
(48) 15.000	± 15.000	10 PERFT	10 PERFT	10 PERFT	10 PERFT
(49) 15.500	± 15.500	10 PERFT	10 PERFT	10 PERFT	10 PERFT
(50) 16.000	± 16.000	10 PERFT	10 PERFT	10 PERFT	10 PERFT
(51) 16.500	± 16.500	10 PERFT	10 PERFT	10 PERFT	10 PERFT
(52) 17.000	± 17.000	10 PERFT	10 PERFT	10 PERFT	10 PERFT
(53) 17.500	± 17.500	10 PERFT	10 PERFT	10 PERFT	10 PERFT
(54) 18.000	± 18.000	10 PERFT	10 PERFT	10 PERFT	10 PERFT
(55) 18.500	± 18.500	10 PERFT	10 PERFT	10 PERFT	10 PERFT
(56) 19.000	± 19.000	10 PERFT	10 PERFT	10 PERFT	10 PERFT
(57) 19.500	± 19.500	10 PERFT	10 PERFT	10 PERFT	10 PERFT
(58) 20.000	± 20.000	10 PERFT	10 PERFT	10 PERFT	10 PERFT
(59) 20.500	± 20.500	10 PERFT	10 PERFT	10 PERFT	10 PERFT
(60) 21.000	± 21.000	10 PERFT	10 PERFT	10 PERFT	10 PERFT
(61) 21.500	± 21.500	10 PERFT	10 PERFT	10 PERFT	10 PERFT
(62) 22.000	± 22.000	10 PERFT	10 PERFT	10 PERFT	10 PERFT
(63) 22.500	± 22.500	10 PERFT	10 PERFT	10 PERFT	10 PERFT
(64) 23.000	± 23.000	10 PERFT	10 PERFT	10 PERFT	10 PERFT
(65) 23.500	± 23.500	10 PERFT	10 PERFT	10 PERFT	10 PERFT
(66) 24.000	± 24.000	10 PERFT	10 PERFT	10 PERFT	10 PERFT
(67) 24.500	± 24.500	10 PERFT	10 PERFT	10 PERFT	10 PERFT
(68) 25.000	± 25.000	10 PERFT	10 PERFT	10 PERFT	10 PERFT
(69) 25.500	± 25.500	10 PERFT	10 PERFT	10 PERFT	10 PERFT
(70) 26.000	± 26.000	10 PERFT	10 PERFT	10 PERFT	10 PERFT
(71) 26.500	± 26.500	10 PERFT	10 PERFT	10 PERFT	10 PERFT
(72) 27.000	± 27.000	10 PERFT	10 PERFT	10 PERFT	10 PERFT
(73) 27.500	± 27.500	10 PERFT	10 PERFT	10 PERFT	10 PERFT
(74) 28.000	± 28.000	10 PERFT	10 PERFT	10 PERFT	10 PERFT
(75) 28.500	± 28.500	10 PERFT	10 PERFT	10 PERFT	10 PERFT
(76) 29.000	± 29.000	10 PERFT	10 PERFT	10 PERFT	10 PERFT
(77) 29.500	± 29.500	10 PERFT	10 PERFT	10 PERFT	10 PERFT
(78) 30.000	± 30.000	10 PERFT	10 PERFT	10 PERFT	10 PERFT
(79) 30.500	± 30.500	10 PERFT	10 PERFT	10 PERFT	10 PERFT
(80) 31.000	± 31.000	10 PERFT	10 PERFT	10 PERFT	10 PERFT
(81) 31.500	± 31.500	10 PERFT	10 PERFT	10 PERFT	10 PERFT
(82) 32.000	± 32.000	10 PERFT	10 PERFT	10 PERFT	10 PERFT
(83) 32.500	± 32.500	10 PERFT	10 PERFT	10 PERFT	10 PERFT
(84) 33.000	± 33.000	10 PERFT	10 PERFT	10 PERFT	10 PERFT
(85) 33.500	± 33.500	10 PERFT	10 PERFT	10 PERFT	10 PERFT
(86) 34.000	± 34.000	10 PERFT	10 PERFT	10 PERFT	10 PERFT
(87) 34.500	± 34.500	10 PERFT	10 PERFT	10 PERFT	10 PERFT
(88) 35.000	± 35.000	10 PERFT	10 PERFT	10 PERFT	10 PERFT
(89) 35.500	± 35.500	10 PERFT	10 PERFT	10 PERFT	10 PERFT
(90) 36.000	± 36.000	10 PERFT	10 PERFT	10 PERFT	10 PERFT
(91) 36.500	± 36.500	10 PERFT	10 PERFT	10 PERFT	10 PERFT
(92) 37.000	± 37.000	10 PERFT	10 PERFT	10 PERFT	10 PERFT
(93) 37.500	± 37.500	10 PERFT	10 PERFT	10 PERFT	10 PERFT
(94) 38.000	± 38.000	10 PERFT	10 PERFT	10 PERFT	10 PERFT
(95) 38.500	± 38.500	10 PERFT	10 PERFT	10 PERFT	10 PERFT
(96) 39.000	± 39.000	10 PERFT	10 PERFT	10 PERFT	10 PERFT
(97) 39.500	± 39.500	10 PERFT	10 PERFT	10 PERFT	10 PERFT
(98) 40.000	± 40.000	10 PERFT	10 PERFT	10 PERFT	10 PERFT
(99) 40.500	± 40.500	10 PERFT	10 PERFT	10 PERFT	10 PERFT
(100) 41.000	± 41.000	10 PERFT	10 PERFT	10 PERFT	10 PERFT

DATE: 7-12-94
PATTERN NO.
DATE: 175501
SHT 5 OF 6

REFERENCE ONLY!



VIEW SHOWING TRANSPORT PACKAGE

SEE OPERATORS MANUAL FOR PROCEDURE TO SET UP MACHINE FROM TRANSPORT PACKAGE.

THIS DRAWING IS THE PROPERTY OF MANITOWOC CRANES, INC. IT IS LOANED, SUBJECT TO RETURN UPON DEMAND AND ON EXPRESS CONDITION THAT IT IS NOT TO BE COPIED OR USED DIRECTLY OR INDIRECTLY IN ANY MANNER DETRIMENTAL TO OUR INTERESTS.		TOLERANCE UNLESS OTHERWISE SPECIFIED		DRAWN BY		DATE	
DECIMAL PLACES	FABRICATION	MACHINING	DR. LS	11-15-94	Manitowoc Cranes, Inc.		
(1) 0.0	± 1.50	± 1.00	DR. LS		LUFFING JIB RIGGING ASSEMBLY		
(2) 0.50	± 0.80	± 0.75			FOLD UNDER (USA)		
(3) 0.000	± 0.000	± 0.005			# 44 BOOM # 133A JIB		
ANGLES	± 1.50	± 0.50			1.50 SWAGED PENDANTS		