

## Center of Gravity

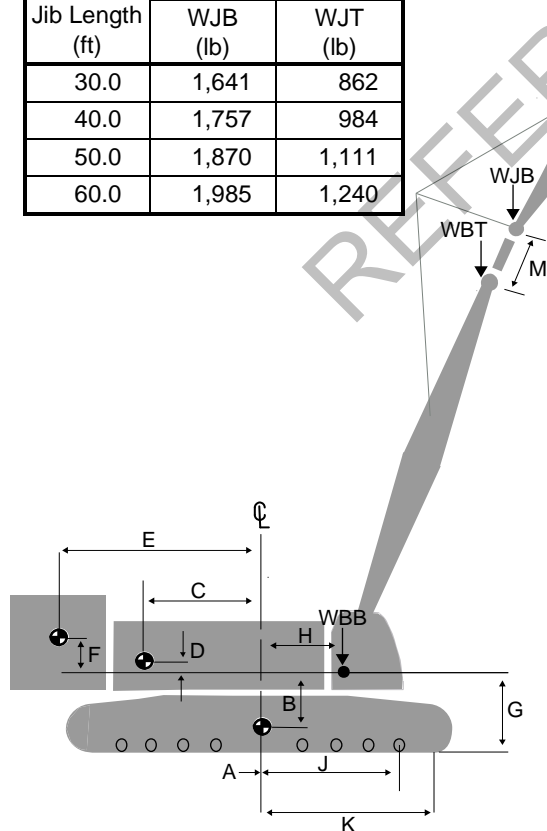
Boom No. B10:290

WEIGHT AND CENTER OF GRAVITY		
	Dimension (in.)	Weight (lb)
SERIES 1		
A	0.0	47,566
B	61.6	
C	33.5	35,681
D	19.0	
E	196.1	45,450
F	-7.6	
SERIES 2		
A	0.0	70,715
B	59.4	
C	33.5	35,681
D	19.0	
E	196.1	73,020
F	11.2	

REFERENCE DIMENSIONS (in.)	
G	83.3
H	44.3
J	88.4
K	108.3
M	15.6
N	85.0
35 in. Pads	
P	30.1
R	32.9
T	35.4

LATTICE WEIGHTS		
Boom Length (ft)	Boom No. B10:290	
	WBB (lb)	WBT (lb)
42.7	3,765	5,250
52.5	4,414	5,499
62.3	4,998	5,816
72.2	5,410	6,005
82.0	5,948	6,370
91.9	6,168	6,472
101.7	6,700	6,843
111.5	7,025	7,123
121.4	7,545	7,507
131.2	7,675	7,704
141.1	8,201	8,081
150.9	8,498	8,391
160.8	9,018	8,775
170.6	9,105	9,016
180.4	9,632	9,393
190.3	10,082	9,808
200.1	10,552	10,245

LATTICE WEIGHTS		
Jib Length (ft)	Jib No. 117	
	WJB (lb)	WJT (lb)
30.0	1,641	862
40.0	1,757	984
50.0	1,870	1,111
60.0	1,985	1,240



Note 1: Weight of all load blocks, hooks, weight ball, slings, hoist lines, etc., beneath boom and jib point sheaves is not considered part of boom and jib weights. All items suspended from boom or jib must be considered part of the load.

Note 2: Consult proper crane capacity chart for lifting capacities and allowable boom and jib combinations.

Note 3: If equipped with upper boom point, add 450 lb to WBT.

**Not to be used for crane rating purposes.**

