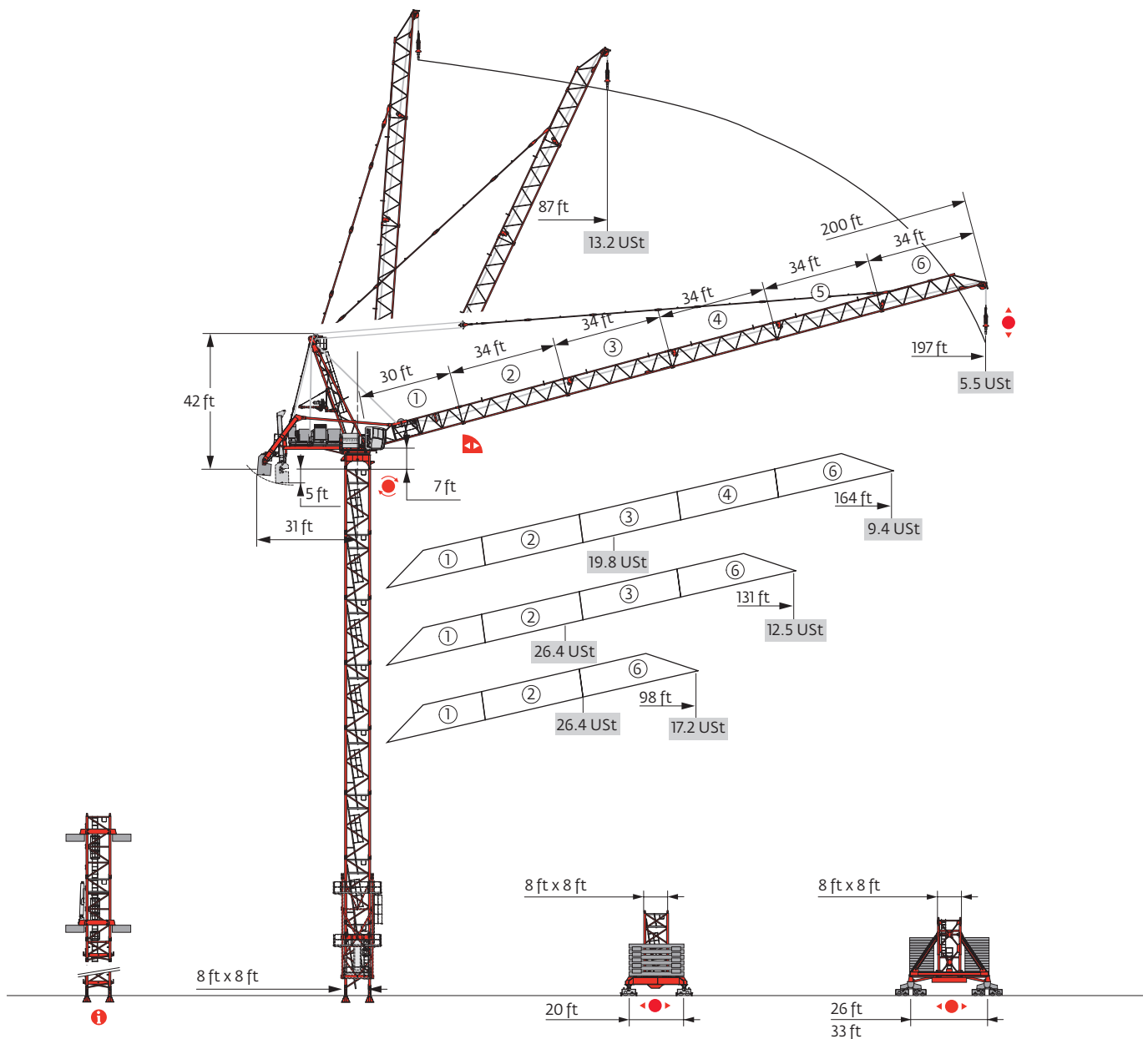


Potain MR 415 H24

Data Sheet

FEM 1.001-A3

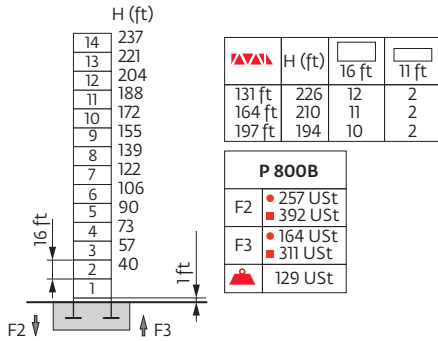


Values have been rounded

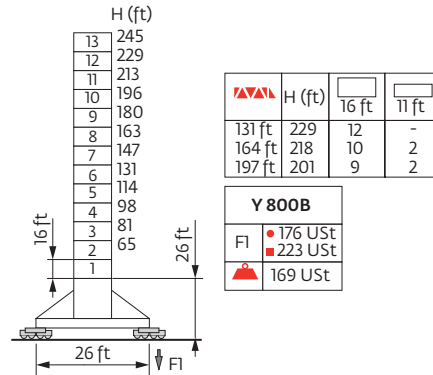
Mast

8 ft

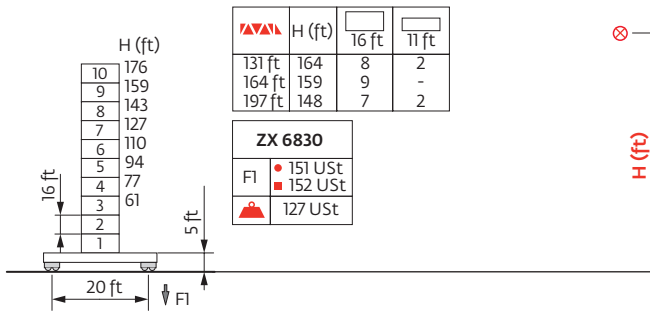
98 ft



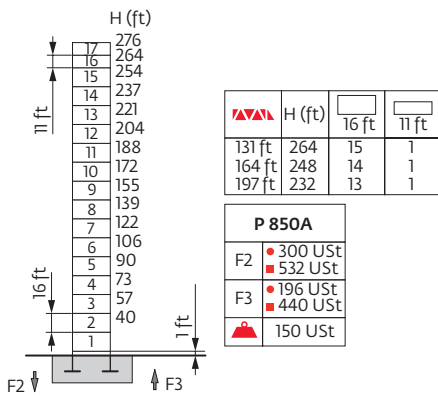
98 ft



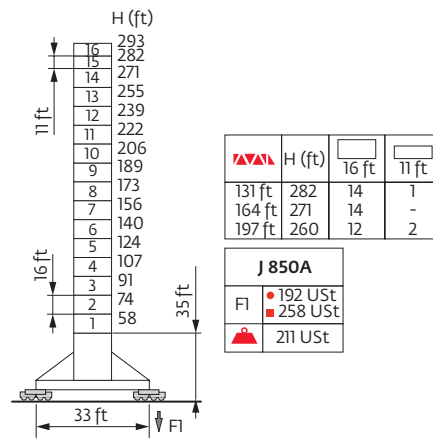
98 ft



98 ft



98 ft



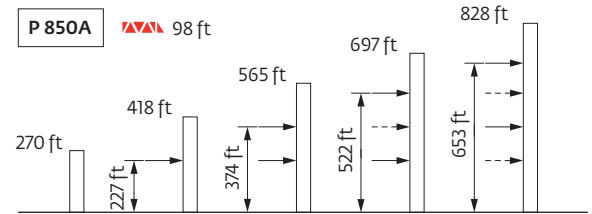
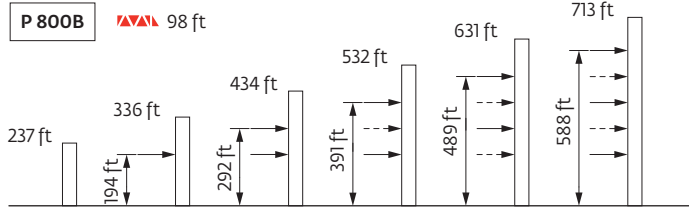
ZX 6830

H1 = H

H3 = H - 1 ft

●	Reactions in service
■	Reactions out of service
▲	Weight without load, without ballast, with jib and max. height

Anchorage



Load charts

197 ft	19	▶	87	92	98	115	131	148	164	180	197	ft				
▲▼▲	↓		13.2	12.6	11.7	9.9	8.6	7.6	6.7	6.1	5.5	USt				
164 ft	17	▶	77	79	82	85	92	98	115	118	131	148	164	ft		
▲▼▲	↓		19.8	19.5	18.7	18	16.5	15.3	13	-	11.2	9.8	8.7	USt		
	↓											13.2	11.9	10.5	9.4	USt
131 ft	14	▶	62	66	72	79	82	85	92	98	115	124	131	ft		
▲▼▲	↓		26.5	24.8	22.5	20.5	19.6	18.8	17.4	16.1	13.7	-	11.8	USt		
	↓												13.2	12.5	USt	
98 ft	12	▶	66	72	79	82	85	92	98	ft						
▲▼▲	↓		26.5	23.9	21.8	20.9	20.1	18.5	17.2	USt						
	↓												13.2	USt		

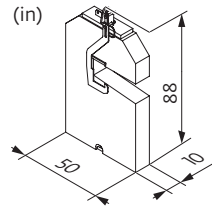
Base ballast

8 ft						
	Y 800B		ZX 6830		J 850A	
▲▲▲	H (ft)	▲ (USt)	H (ft)	▲ (USt)	H (ft)	▲ (USt)
98 ft	245	198	176	133	293	225
131 ft	229	185	165	133	282	225
164 ft	218	198	159	155	271	238
197 ft	201	198	148	177	260	238

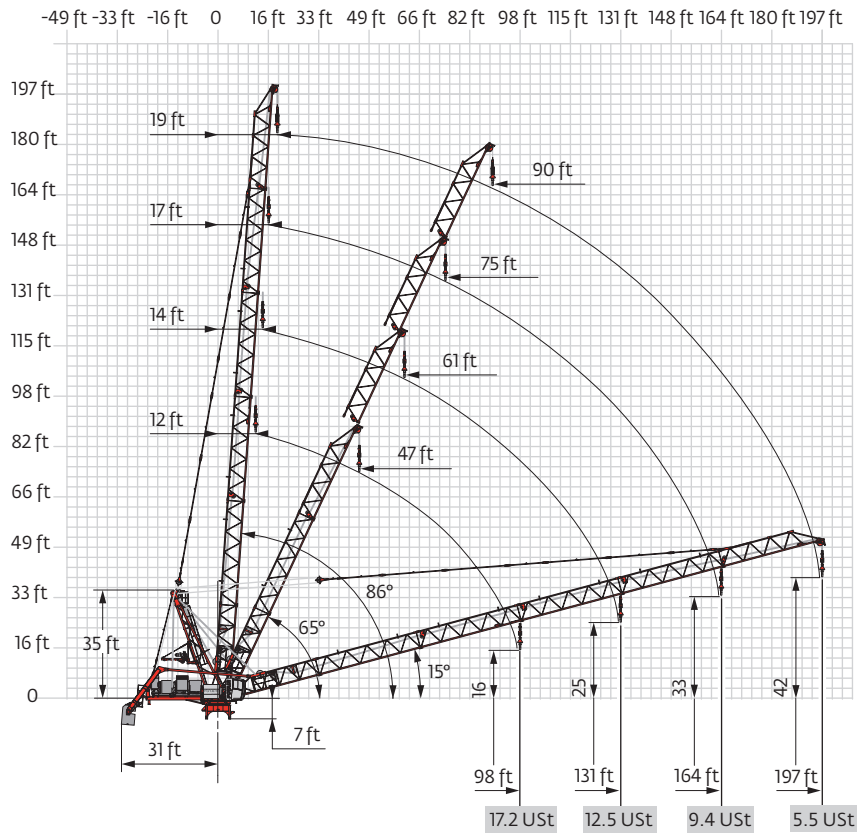
Counter-jib ballast

▲▲▲	9700 lb	▲ (lb)
98 ft	7	67,902
131 ft	8	77,603
164 ft	9	87,303
197 ft	9	87,303

9700 lb



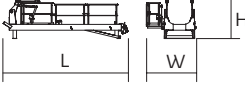
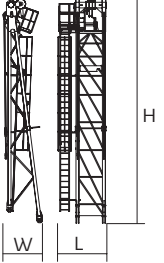

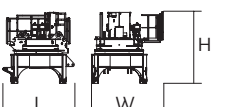
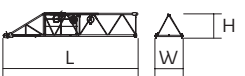
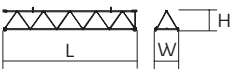
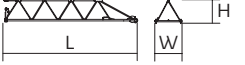
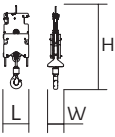

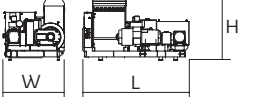
Luffing jib



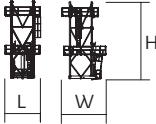


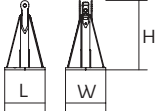
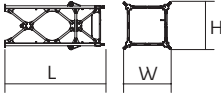
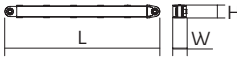
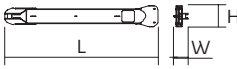


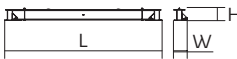
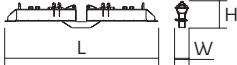

Component weights

Crane upper :  197 ft -  180/215 LBR



			L (ft)	W (ft)	H (ft)	lb (+/- 5%)
Counter-jib			20.9	8.4	5.8	5445
Towerhead			8.4	6.4	39.1	12,103
Cab	 Ultra View		14.9	6.5	8.2	3329
Pivot	 8 ft		9.6	10.5	10.9	23,115
Jib section	 ①		31.8	6.2	5.8	4850
Jib section	 ② ③ ④ ⑤		34.5 34.5 34.5 34.5	6.2 6.2 6.2 6.2	5.8 5.8 5.8 5.8	2932 2855 2579 2304
Jib section	 ⑥		34.4	6.2	6.1	4409
Hookblock			2.9	1.8	8.4	2579
Hoisting winch (+ rope)	 180/215 LBR		13.3	9.7	7	23,049
Luffing winch (+ rope)	 124/150 VBR		11.9	6.7	7.5	8863

Component weights

			L (ft)	W (ft)	H (ft)	lb (+/- 5%)
Climbing cage		□ 8 ft	15.2	19	33.6	28,484
K 850/KR 849A KRMT 849A K 839A KMT 850.10A		□ 8 ft	17.2 17.2 17.2 17.5	8.3 8.4 8.3 8.3	8.2 8.3 8.1 8.2	12,291 9017 7154 12,015
KRMT 849C		□ 8 ft	11.7	8.4	8.3	7066
Fixing angles		P 800B P 850A	2.5 3	2.5 3	4.2 4.9	1025 1841
Chassis mast		Y 800B J 850A	19.8 29.4	9.6 9.6	9.6 9.6	19,004 31,416
Struts		Y 800B J 850A	18.1 28.1	1.6 1.7	1.5 1.3	2447 3638
1/2 Side member		J 850A J 850A Y 800B	24 24.3 18.6	2.3 2.3 4.1	3.3 3.7 2.4	5688 5798 3351
Side member		Y 800B	39.4	4.1	2.4	6724
Ballast support		Y 800B	12.3	1.2	3	2392
Chassis beam		J 850A Y 800B	35.1 28.5	2.9 2.7	2.8 2.4	7319 4938
Cross girder		ZX 6830	29.9	2.5	4.9	12,004
Cross girder		ZX 6830	29.9	3.7	3.6	11,607



Mechanisms

400 V - 50 Hz											hp	kW	
	180 LBR 120	fpm USt	17/174 13.2	28/276 8	44/443 4.7	70/702 2.6	9/85 26.5	14/138 16.5	22/220 9.8	35/351 5.5	180	132	1903 ft
	124 VBR	fpm	1 min 31 s								125	90	
	R - 8,8	rpm	0 → 0.67								2 x 6	2 x 4.4	
	Y 800B RT 584 A1 - 2V	fpm	44 - 89								8 x 7	8 x 5.2	
	ZX 6830 RT 664 A2B - 2V	fpm	52 - 105								6 x 7	6 x 5.2	
	J 850A												

IEC 60204-32	kVA
400 V (+10% -10%) 50 Hz	180 LBR : 300 kVA

480 V - 60 Hz											hp	kW	
	215 LBR 120	fpm USt	21/207 13.2	33/328 8	52/531 4.7	82/840 2.6	10/102 26.5	16/164 16.5	26/266 9.8	43/420 5.5	215	158	1903 ft
	150 VBR	fpm	1 min 16 s								148	108	
	R - 10,5	rpm	0 → 0.8								2 x 7.2	2 x 5.3	
	Y 800B RT 584 A1 - 2V	fpm	52 - 105								8 x 8.4	8 x 6.2	
	ZX 6830 RT 664 A2B - 2V	fpm	62 - 125								6 x 8.4	6 x 6.2	
	J 850A												

IEC 60204-32	kVA
480 V (+6% -10%) 60 Hz	215 LBR : 350 kVA

	Hoisting
	Luffing
	Slewing
	Travelling
	Rated power
	Consult us

Notes

Constant improvement and engineering progress make it necessary that we reserve the right to make specification, equipment and price changes without notice. Illustrations shown may include optional equipment and accessories, and may not include all standard equipment.



www.manitowoc.com

Manitowoc Cranes **Regional Headquarters**

Americas

Manitowoc, Wisconsin, USA
Tel: +1 920 684 6621
Fax: +1 920 683 6277

Shady Grove, Pennsylvania, USA
Tel: +1 717 597 8121
Fax: +1 717 597 4062

Europe, Middle East, Africa

Ecully, France
Tel: +33 472 18 2020
Fax: +33 472 18 2000

China

Shanghai, China
Tel: +86 21 6457 0066
Fax: +86 21 6457 4955

Greater Asia-Pacific

Singapore
Tel: +65 6264 1188
Fax: +65 6862 4040

Potain MR 415 H24
Code 04-010-.5M-1111