

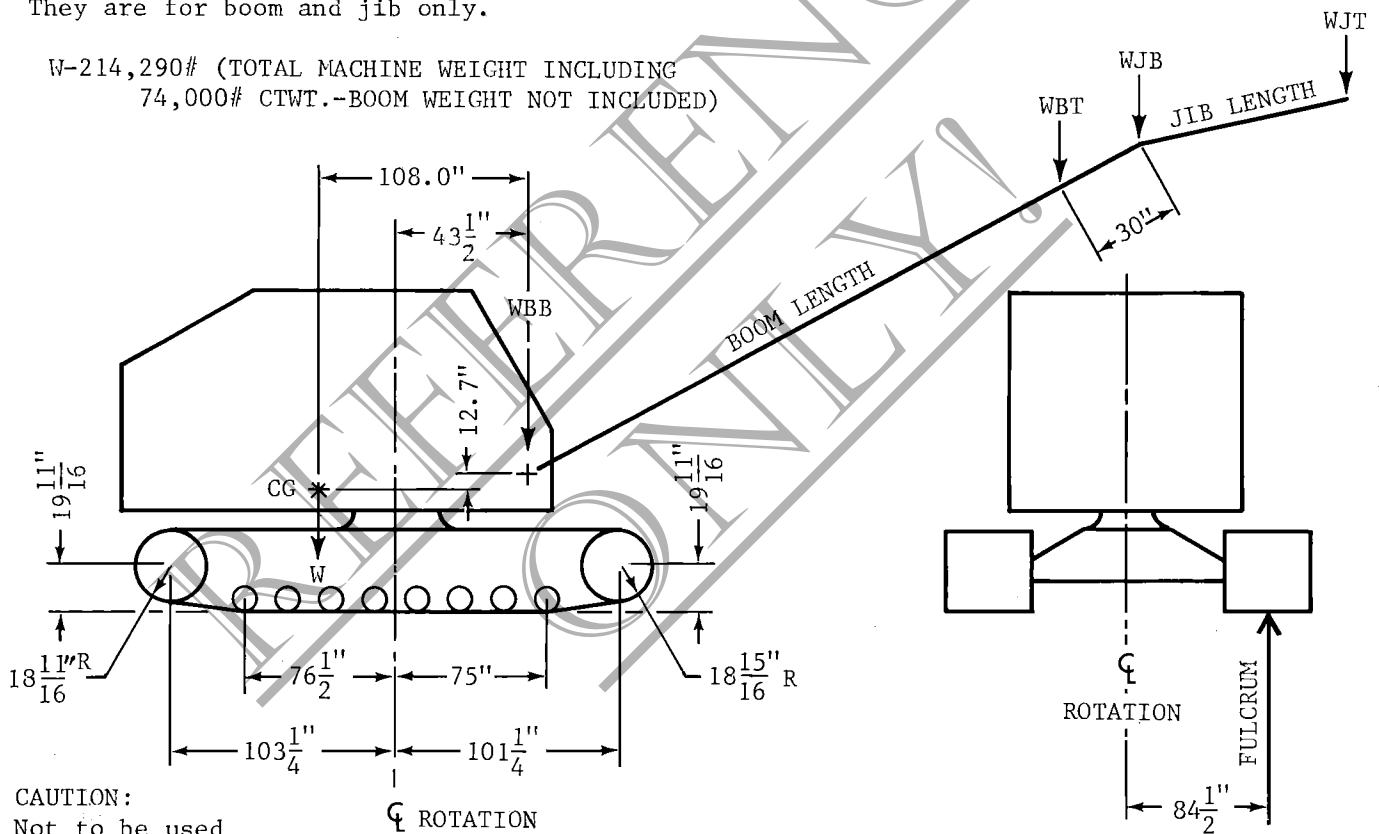
BOOM NO. 8, OPEN THROAT TOP		
Bm. Lgth.	WBB	WBT
60	3898	6484
70	4571	7097
80	5070	7511
90	5743	8124
100	6213	8498
110	6626	8887
120	7316	9483
130	7771	10013
140	8185	10465
150	8884	11050
160	9194	11436
170	9599	11895
180	10360	12416
190	10650	12822
200	11048	13289
210	11771	13851

#123 JIB WEIGHTS WITH #8 BOOM		
JIB LENGTH	WJB	WJT
30	2107	537
40	2294	877
50	2509	1190
60	2738	1488

#124 JIB WEIGHTS WITH #8 BOOM		
JIB LENGTH	WJB	WJT
30	1606	271
40	1654	481
50	1731	663
60	1823	830

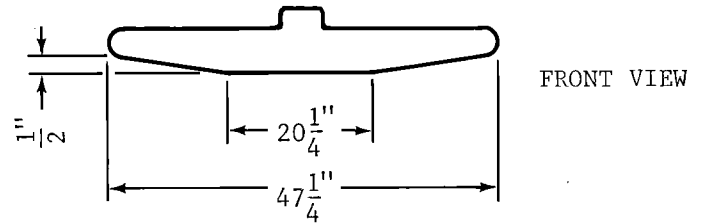
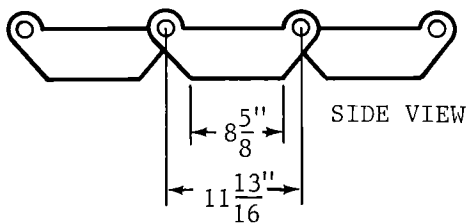
NOTE: Boom and jib weights do not include weight of load, load block, weight ball, slings, etc. They are for boom and jib only.

W-214,290# (TOTAL MACHINE WEIGHT INCLUDING 74,000# CTWT.-BOOM WEIGHT NOT INCLUDED)



CAUTION:
Not to be used
for crane rating
purposes.

CRAWLER TREAD DETAILS



T.S. 266

MANITOWOC ENGINEERING COMPANY			C.G. CHART		DATE
			MODEL 3900 VICON - 100 TON		3/10/81
DR.	CK.	MODEL	48" TREADS		CHART NO.
REVISED DATE					T.S.-266