

WU=118,690\* (WEIGHT OF UPPERWORKS INCLUDING  
61,200\* CRANE CTWT.—BOOM AND TOWER  
WEIGHT NOT INCLUDED)

WL=94,070\* (WEIGHT OF MANITOWOC HENDRICKSON  
12X6 CARRIER INCLUDING OUTRIGGERS  
AND 10,500\* FRONT BUMPER CTWT.)

NO. 9A TOWER		
TOWER LGTH.	WTB	WTT
114	8190	15855
124	8940	16495
134	9417	16793
144	10166	17433
154	10621	17386
164	10844	17594
174	11536	18138
184	12161	18672
194	12345	18789

NO. 18 BOOM		
BOOM LGTH.	WBB	WBT
100	3345	4079
110	3752	4365
120	3937	4620
130	4536	5129
140	4753	5351
150	5178	5620

NOTE: Boom and jib weights do not include weight of load, load block, weight ball, slings, etc. They are for boom and jib only.

WTT+WBB

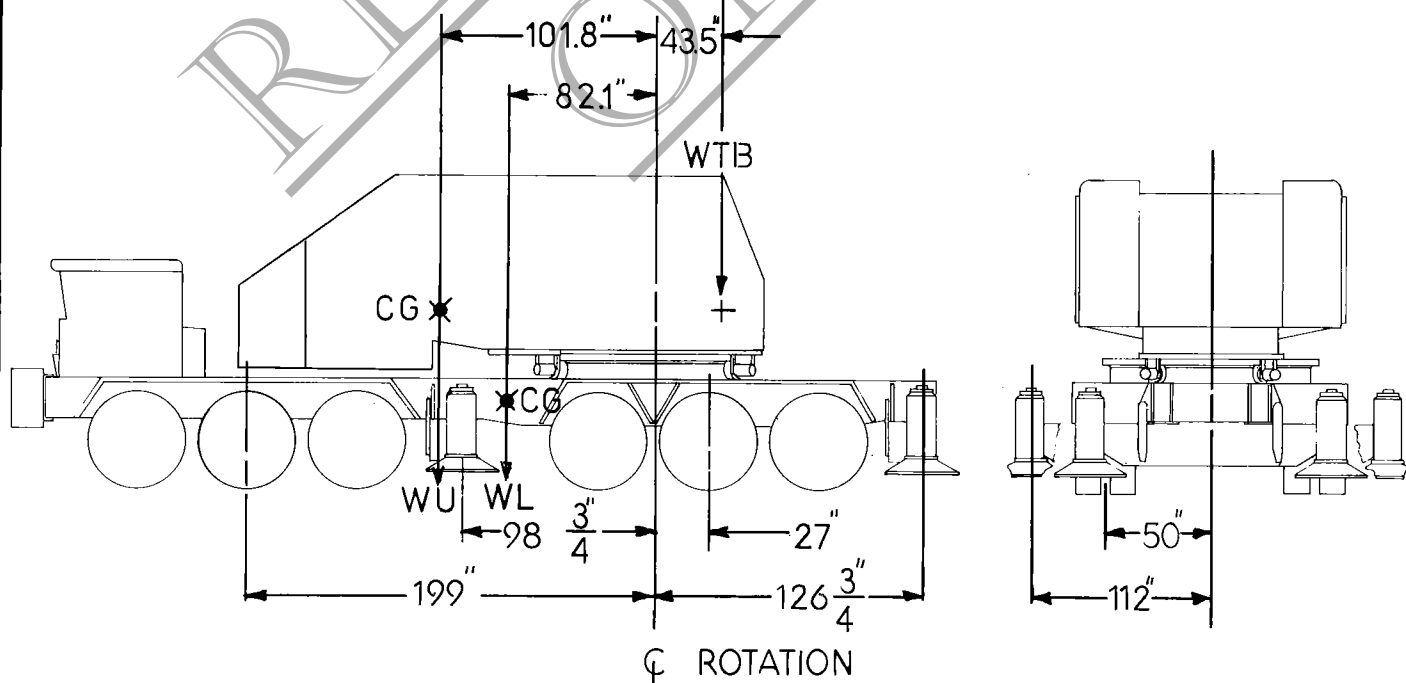
BOOM LENGTH

WBT

CAUTION:  
Not to be used  
for crane rating  
purposes.

CAUTION:  
Outside assist required  
on 174'-194' tower lengths.

TOWER LENGTH



MANITOWOC ENGINEERING COMPANY			CG. CHART		DATE
DR.	CK.	MODEL	3900T TOWER SERIES 2		3-21-78
			NO. 9A TOWER		CHART NO. TS-243

REVISED  
DATE

1.2.672