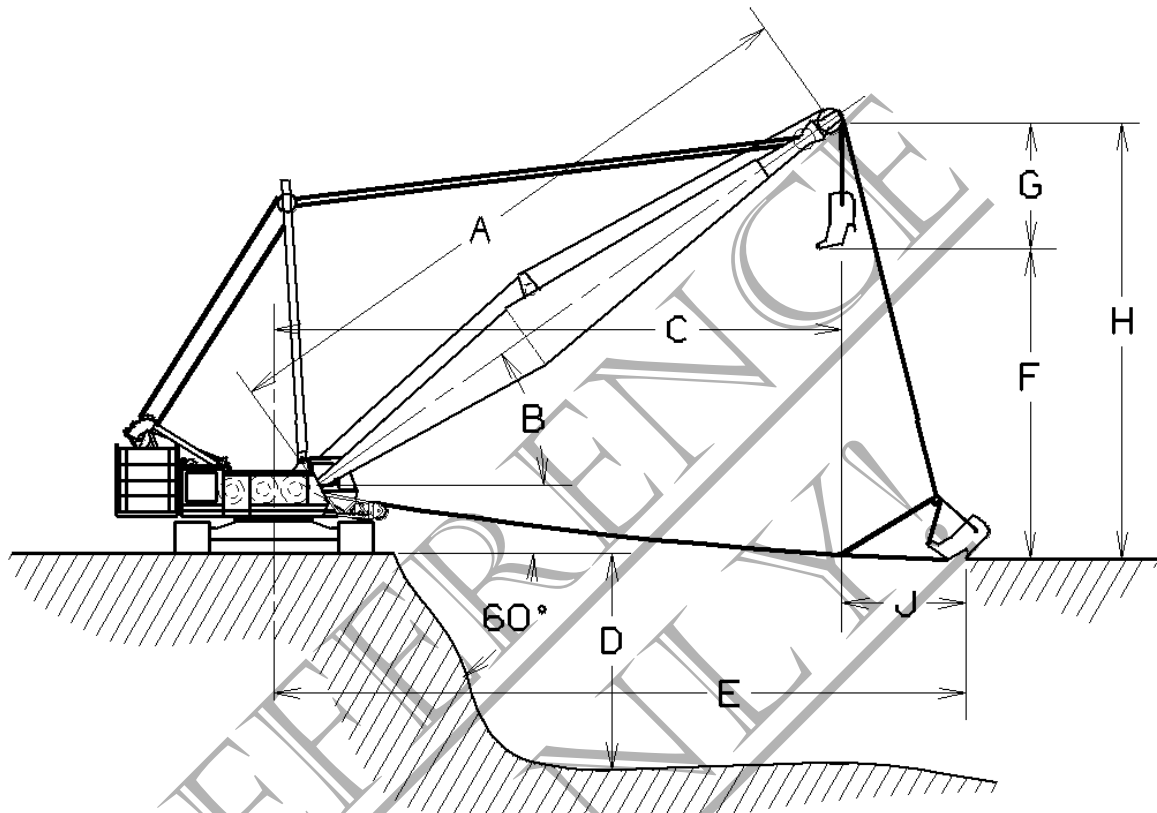


# Dragline Range Diagram

## 888 SERIES 1



A Boom Length	Ft.	70				80			
	Meters	21.3				24.4			
B Boom Angle	Deg.	30	35	40	45	30	35	40	45
C CL of Rotation to Center Dump	Ft.	70	67	63	58	79	75	70	65
	Meters	21.3	20.4	19.2	17.7	24.1	22.9	21.3	19.8
D Depth Cut (Approx.)	Ft.	61	55	48	40	56	60	61	53
	Meters	18.6	16.8	14.6	12.2	17.1	18.3	18.6	16.2
E Digging Reach (Approx.)	Ft.	78	77	75	71	89	87	84	81
	Meters	23.8	23.5	22.9	21.6	27.1	26.5	25.6	24.7
F Dumping Height	Ft.	26	31	36	41	31	37	43	48
	Meters	7.9	9.4	11.0	12.5	9.5	11.3	13.1	14.6
H Height from Grade to CL of Boom Point	Ft.	45	50	55	60	50	56	62	67
	Meters	13.7	15.2	16.8	18.3	15.2	17.1	18.9	20.4
J Casting Distance	Ft.	8	10	12	13	10	12	14	16
	Meters	2.4	3.0	3.7	4.0	3.0	3.7	4.3	4.9

# Dragline Range Diagram

## 888 SERIES 1

<b>A</b> Boom Length	Ft.	90				100			
	Meters	27.4				30.5			
<b>B</b> Boom Angle	Deg.	30	35	40	45	30	35	40	45
<b>C</b> CL of Rotation to Center Dump	Ft.	87	83	78	73	96	91	86	80
	Meters	26.5	25.3	23.8	22.3	29.3	27.7	26.2	24.4
<b>D</b> Depth Cut (Approx.)	Ft.	46	51	57	62	30	39	48	55
	Meters	14.0	15.5	17.4	18.9	9.1	11.9	14.6	16.8
<b>E</b> Digging Reach (Approx.)	Ft.	99	97	94	91	109	107	104	100
	Meters	30.2	29.6	28.7	27.7	33.2	32.6	31.7	30.5
<b>F</b> Dumping Height	Ft.	36	43	49	55	41	49	56	62
	Meters	11.0	13.1	14.9	16.8	12.5	14.9	17.1	18.9
<b>H</b> Height from Grade to CL of Boom Point	Ft.	55	62	68	74	60	68	75	81
	Meters	16.8	18.9	20.7	22.6	18.3	20.7	22.9	24.7
<b>J</b> Casting Distance	Ft.	12	14	16	18	13	16	18	20
	Meters	3.7	4.3	4.9	5.5	4.0	4.9	5.5	6.1

Working ranges are based on following conditions:

1. Dimension **F** is based on a **G** Dimension of 19 Ft. (5.8m).
2. Dimension **D** is based on a 12 Ft. (3.7m) floor level bottom to fill the bucket and casting distance **J** equal to approximately 1/3 the dumping height **F**. The two dimensions are also based on maximum drum capacity with one layer of rope. Front drum (drag) useable length - 66 Ft. (20m) of 1 in. (26 mm) diameter rope. Rear drum (hoist) capacity - 181 Ft. (55m) of 1 in. (26 mm) diameter rope. The depth of cut, casting distance and digging reach may vary considerably depending on digging conditions, design of bucket and operator's skill. Maximum digging depths are attainable under ideal conditions and cannot be guaranteed.
3. Machines are equipped with wire rope to dig to a depth of 40 Ft. (12m), 50 Ft. (15m), 45 Ft. (14m) and 30 Ft. (9m) for boom lengths of 70 Ft. (21.3m), 80 Ft. (24.4m), 90 Ft. (27.4m) and 100 Ft. (30.5m) respectively.