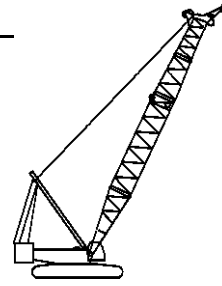




Liftcrane Boom Capacities

Boom No. 58WA with Heavy Lift Top
368,000 lb Crane Counterweight
120,000 lb Carbody Counterweight
360 Degree Rating



16000
SERIES 4



LIFTING CAPACITIES: Lifting capacities for various boom lengths and operating radii are for freely suspended loads and do not exceed 75% of a static tipping load. Capacities based on structural competence are denoted by an asterisk (*).

Standard upper boom point capacity for liftcrane service with single part whip line is 30,000 lb or 60,000 lb with two part whip line. In all cases, upper boom point capacities cannot exceed those listed for main boom capacity.

Weight of all load blocks, hooks, weight ball, slings, hoist lines, etc., beneath boom point sheaves is considered part of main boom load. Boom is not to be lowered beyond radii where combined weights are greater than rated capacity. Where no capacity is shown, operation is not intended or approved.

OPERATING CONDITIONS: Machine to operate in a level position on a firm uniformly supporting surface. Refer to boom rigging **No. 81020381** Wire Rope Specification chart **No. 9237-A**, Counterweight Arrangement chart **No. 8682-A** and Wind Conditions chart **No. 8688-A**. Crane operator judgment must be used to allow for dynamic load effects of swinging, hoisting or lowering, travel, wind conditions, as well as adverse operating conditions and physical machine depreciation. Refer to Operator's Manual for operating guidelines.

MACHINE TRAVEL: Machine to travel on a firm, level and uniformly supporting surface and boom within boom angle range shown in capacity chart. Refer to Maximum Allowable Travel Specification chart **No. 9235-A**.



OPERATING RADIUS: Operating radius is horizontal distance from axis of rotation to center of vertical hoist line or load block.



BOOM ANGLE: Boom angle in degrees (°) is angle between horizontal and centerline of boom butt and inserts, and is an indication of operating radius. In all cases, operating radius shall govern capacity.



BOOM POINT ELEVATION: Boom point elevation is vertical distance from ground level to centerline of boom point shaft.

MACHINE EQUIPMENT: Machine equipped with 34 ft crawlers, 60 in. treads, 32 ft live mast, 26 part boom hoist reeving, boom support straps, 368,000 lb crane counterweight, two 30,000 lb and four 15,000 lb carbody counterweights.

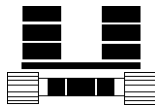
WITH OR WITHOUT BOOM CATWALKS	
Maximum Boom Length Lifted Unassisted	
Over End of Blocked Crawlers	Over Side of Crawlers
Boom Length (a) 295.3 ft	Boom Length (a) 285.4 ft
Load block, hook, and weight ball on ground until combined weights are within capacity of chart. (a) Upper boom point cannot be attached.	

Third Line Deduct
Deduct 400 lb from capacities when boom is equipped for three line operation.

Explanation of Symbols



Boom No. 58WA with Heavy Lift Top



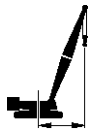
Crane Counterweight
+
Carbody Counterweight



360 Degree Rating



Boom Length



Operating Radius
(see page 1)



Boom Angle
(see page 1)



Boom Point Elevation
(see page 1)



Lifting Capacities
(see page 1)

REFERENCE ONLY!

16000 S-4

ASME B30.5



368,000 lb
+
120,000 lb



98.4 ft

ft	ft	ft	lb
21	82.9	106.0	881,900*
22	82.3	105.8	867,400*
24	81.1	105.4	798,500*
26	79.9	105.0	739,300*
28	78.7	104.6	688,100*
30	77.5	104.1	643,200*
32	76.3	103.5	603,500*
34	75.1	102.9	563,700*
36	73.9	102.3	528,500*
38	72.7	101.6	492,300
40	71.4	100.8	454,300
45	68.3	98.8	379,600
50	65.1	96.4	324,800
55	61.7	93.6	282,700
60	58.3	90.5	249,500
65	54.7	86.9	222,500
70	50.9	82.8	200,200
75	46.9	78.1	181,400
80	42.6	72.6	165,300
85	37.9	66.2	151,400
90	32.6	58.5	139,200
95	26.2	48.8	128,400
100	17.6	34.8	118,700

108.3 ft

ft	ft	ft	lb
22	83.0	115.8	821,100*
24	81.9	115.4	797,500*
26	80.9	115.1	738,400*
28	79.8	114.6	687,100*
30	78.7	114.2	642,300*
32	77.6	113.7	602,600*
34	76.5	113.2	563,100*
36	75.4	112.6	525,300*
38	74.3	112.0	490,900*
40	73.2	111.3	454,500
45	70.4	109.5	379,700
50	67.5	107.3	324,800
55	64.5	104.9	282,600
60	61.5	102.1	249,400
65	58.4	99.0	222,400
70	55.2	95.4	200,000
75	51.8	91.5	181,200
80	48.2	86.9	165,200
85	44.4	81.8	151,300
90	40.3	75.9	139,200
95	35.9	69.1	128,500
100	30.8	60.8	119,000
105	24.7	50.5	110,400
110	16.3	35.5	102,600

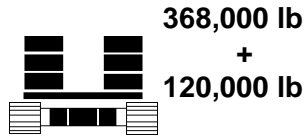
118.1 ft

ft	ft	ft	lb
24	82.6	125.4	775,000*
26	81.6	125.1	737,900*
28	80.6	124.7	686,700*
30	79.6	124.3	641,800*
32	78.7	123.8	602,200*
34	77.7	123.3	561,500*
36	76.7	122.8	522,500*
38	75.6	122.2	488,300*
40	74.6	121.6	455,000
45	72.1	120.0	380,100
50	69.5	118.0	325,000
55	66.8	115.8	282,900
60	64.1	113.4	249,600
65	61.3	110.6	222,600
70	58.5	107.5	200,200
75	55.5	104.0	181,400
80	52.5	100.1	165,400
85	49.3	95.8	151,500
90	45.9	90.9	139,500
95	42.3	85.4	128,800
100	38.4	79.1	119,300
105	34.1	71.7	110,900
110	29.2	63.0	103,200
115	23.3	52.0	96,200
120	15.2	36.0	89,700

REFER TO MANUAL

16000 S-4

ASME B30.5



127.9 ft

ft	ft	ft	lb
26	82.3	135.1	736,800*
28	81.4	134.7	685,600*
30	80.5	134.3	640,800*
32	79.5	133.9	601,200*
34	78.6	133.5	557,900*
36	77.7	133.0	519,100*
38	76.8	132.5	485,000*
40	75.9	131.9	454,800*
45	73.5	130.4	379,900
50	71.1	128.6	324,800
55	68.7	126.6	282,600
60	66.3	124.4	249,200
65	63.8	121.8	222,200
70	61.2	119.1	199,800
75	58.6	115.9	181,000
80	55.9	112.5	164,900
85	53.0	108.7	151,100
90	50.1	104.5	139,000
95	47.0	99.8	128,300
100	43.8	94.6	118,900
105	40.4	88.7	110,400
110	36.6	82.0	102,800
115	32.5	74.2	95,900
120	27.8	65.0	89,600
125	22.1	53.3	83,800

137.8 ft

ft	ft	ft	lb
26	82.8	145.0	709,700*
28	82.0	144.7	685,100*
30	81.1	144.3	640,300*
32	80.3	143.9	599,600*
34	79.5	143.5	555,200*
36	78.6	143.1	516,600*
38	77.7	142.6	482,600*
40	76.9	142.1	452,600*
45	74.7	140.7	380,000
50	72.5	139.1	324,800
55	70.3	137.2	282,600
60	68.1	135.2	249,200
65	65.8	132.9	222,200
70	63.5	130.3	199,800
75	61.1	127.5	181,000
80	58.6	124.4	164,900
85	56.1	121.0	151,000
90	53.5	117.3	139,000
95	50.8	113.2	128,300
100	48.0	108.7	118,900
105	45.1	103.7	110,500
110	42.0	98.1	102,900
115	38.7	91.8	96,000
120	35.1	84.8	89,800
125	31.1	76.6	84,000
130	26.5	66.9	78,800
135	21.0	54.6	73,900

147.6 ft

ft	ft	ft	lb
28	82.5	154.7	631,200*
30	81.7	154.3	618,200*
32	81.0	154.0	596,300*
34	80.2	153.6	552,100*
36	79.4	153.2	513,600*
38	78.6	152.7	479,700*
40	77.8	152.2	449,700*
45	75.8	150.9	379,700
50	73.8	149.4	324,400
55	71.7	147.7	282,100
60	69.6	145.8	248,700
65	67.5	143.7	221,600
70	65.4	141.4	199,200
75	63.2	138.8	180,300
80	61.0	136.0	164,300
85	58.7	132.9	150,400
90	56.4	129.6	138,300
95	53.9	125.9	127,700
100	51.5	121.8	118,200
105	48.9	117.5	109,800
110	46.2	112.6	102,200
115	43.3	107.3	95,400
120	40.4	101.4	89,100
125	37.1	94.9	83,400
130	33.7	87.4	78,200
135	29.8	78.9	73,400
140	25.4	68.7	68,900
145	20.1	55.8	64,700

16000 S-4

ASME B30.5



368,000 lb
+
120,000 lb



157.5 ft

ft	ft	ft	lb
28	83.0	164.6	604,700*
30	82.3	164.3	590,900*
32	81.5	164.0	577,100*
34	80.8	163.6	549,700*
36	80.0	163.2	511,200*
38	79.3	162.8	477,500*
40	78.6	162.4	447,600*
45	76.7	161.1	379,600
50	74.8	159.7	324,300
55	72.9	158.2	281,900
60	71.0	156.4	248,400
65	69.0	154.4	221,300
70	67.0	152.3	198,900
75	65.0	149.9	180,000
80	63.0	147.3	164,000
85	60.9	144.5	150,100
90	58.7	141.4	138,000
95	56.6	138.1	127,300
100	54.3	134.4	117,900
105	52.0	130.5	109,500
110	49.6	126.2	101,900
115	47.1	121.5	95,000
120	44.5	116.4	88,800
125	41.8	110.8	83,100
130	38.9	104.6	77,900
135	35.8	97.7	73,100
140	32.4	89.9	68,700
145	28.7	81.0	64,600
150	24.4	70.3	60,700
155	19.2	56.9	57,000

167.3 ft

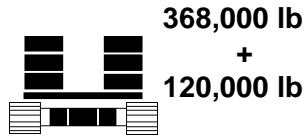
ft	ft	ft	lb
30	82.7	174.3	564,100*
32	82.0	173.9	551,700*
34	81.3	173.6	539,500*
36	80.6	173.2	508,500*
38	79.9	172.9	474,800*
40	79.2	172.4	444,900*
45	77.5	171.3	379,200
50	75.7	170.0	323,800
55	73.9	168.5	281,400
60	72.1	166.9	247,800
65	70.3	165.0	220,700
70	68.5	163.0	198,200
75	66.6	160.8	179,300
80	64.7	158.4	163,200
85	62.8	155.8	149,300
90	60.8	152.9	137,200
95	58.8	149.9	126,600
100	56.7	146.6	117,100
105	54.6	143.0	108,700
110	52.5	139.1	101,100
115	50.2	134.9	94,300
120	47.9	130.4	88,000
125	45.5	125.4	82,400
130	43.0	120.1	77,200
135	40.4	114.2	72,400
140	37.5	107.7	67,900
145	34.5	100.5	63,800
150	31.3	92.4	60,000
155	27.6	83.0	56,400
160	23.5	71.9	53,100
165	18.4	57.9	49,900

177.2 ft

ft	ft	ft	lb
32	82.5	183.9	528,500*
34	81.8	183.6	517,500*
36	81.2	183.2	506,700*
38	80.5	182.9	473,100*
40	79.9	182.5	443,300*
45	78.2	181.4	379,200
50	76.5	180.2	323,700
55	74.9	178.8	281,300
60	73.2	177.2	247,700
65	71.5	175.5	220,600
70	69.7	173.6	198,100
75	68.0	171.6	179,200
80	66.2	169.3	163,100
85	64.4	166.9	149,200
90	62.6	164.3	137,100
95	60.7	161.4	126,400
100	58.8	158.4	117,000
105	56.9	155.1	108,500
110	54.9	151.5	101,000
115	52.9	147.7	94,100
120	50.8	143.6	87,900
125	48.6	139.2	82,200
130	46.4	134.4	77,000
135	44.1	129.2	72,300
140	41.6	123.6	67,800
145	39.1	117.4	63,700
150	36.3	110.6	59,900
155	33.4	103.1	56,400
160	30.2	94.7	53,100
165	26.7	84.9	49,900
170	22.6	73.4	47,000
175	17.6	58.8	44,200

16000 S-4

ASME B30.5



187.0 ft

ft	ft	ft	lb
32	82.9	193.9	502,300*
34	82.3	193.6	495,100*
36	81.6	193.2	485,200*
38	81.0	192.9	470,600*
40	80.4	192.5	440,900*
45	78.8	191.5	378,700
50	77.3	190.3	323,200
55	75.7	189.0	280,700
60	74.1	187.6	247,100
65	72.5	185.9	219,900
70	70.8	184.2	197,400
75	69.2	182.2	178,400
80	67.5	180.1	162,300
85	65.9	177.9	148,400
90	64.1	175.4	136,300
95	62.4	172.8	125,600
100	60.7	169.9	116,100
105	58.9	166.9	107,700
110	57.0	163.6	100,100
115	55.2	160.1	93,300
120	53.2	156.3	87,000
125	51.3	152.2	81,400
130	49.2	147.9	76,200
135	47.1	143.3	71,400
140	45.0	138.2	67,000
145	42.7	132.8	62,900
150	40.4	126.9	59,100
155	37.9	120.5	55,600
160	35.2	113.5	52,200
165	32.4	105.7	49,100
170	29.3	96.9	46,200
175	25.8	86.8	43,400
180	21.9	74.8	40,800
185	17.0	59.6	38,300

196.9 ft

ft	ft	ft	lb
34	82.6	203.5	474,200*
36	82.1	203.2	465,200*
38	81.5	202.9	456,400*
40	80.9	202.5	439,000*
45	79.4	201.6	377,800*
50	77.9	200.4	322,800
55	76.4	199.2	280,300
60	74.9	197.8	246,600
65	73.4	196.3	219,400
70	71.8	194.6	196,800
75	70.3	192.8	177,900
80	68.7	190.8	161,800
85	67.1	188.7	147,800
90	65.5	186.4	135,700
95	63.9	183.9	125,000
100	62.3	181.2	115,500
105	60.6	178.4	107,100
110	58.9	175.3	99,500
115	57.2	172.1	92,700
120	55.4	168.6	86,400
125	53.6	164.9	80,800
130	51.7	160.9	75,600
135	49.8	156.6	70,800
140	47.8	152.1	66,400
145	45.8	147.2	62,300
150	43.7	142.0	58,500
155	41.5	136.3	55,000
160	39.2	130.2	51,700
165	36.8	123.5	48,600
170	34.2	116.2	45,700
175	31.4	108.1	42,900
180	28.4	99.0	40,300
185	25.0	88.6	37,900
190	21.1	76.2	35,500
195	16.3	60.4	33,200*

206.7 ft

ft	ft	ft	lb
34	83.0	213.5	453,700*
36	82.4	213.2	445,400*
38	81.9	212.9	437,400*
40	81.3	212.5	429,500*
45	79.9	211.6	375,600*
50	78.5	210.6	322,300
55	77.1	209.4	279,600
60	75.6	208.1	245,900
65	74.2	206.6	218,600
70	72.7	205.0	196,100
75	71.3	203.3	177,100
80	69.8	201.4	160,900
85	68.3	199.4	147,000
90	66.8	197.2	134,800
95	65.3	194.9	124,100
100	63.7	192.4	114,700
105	62.1	189.7	106,200
110	60.5	186.9	98,600
115	58.9	183.8	91,700
120	57.3	180.6	85,500
125	55.6	177.1	79,800
130	53.9	173.4	74,600
135	52.1	169.5	69,900
140	50.3	165.3	65,400
145	48.4	160.9	61,400
150	46.5	156.1	57,600
155	44.5	151.0	54,000
160	42.5	145.6	50,700
165	40.4	139.7	47,700
170	38.1	133.3	44,800
175	35.7	126.4	42,000
180	33.2	118.8	39,500
185	30.5	110.4	37,000
190	27.6	101.0	34,700
195	24.3	90.2	32,500
200	20.5	77.4	29,900*
205	15.7	61.1	27,100*

16000 S-4

ASME B30.5



216.5 ft

ft	ft	ft	lb
36	82.8	223.1	427,000*
38	82.3	222.8	419,600*
40	81.7	222.5	412,400*
45	80.4	221.6	374,100*
50	79.0	220.6	322,000
55	77.7	219.5	279,300
60	76.3	218.2	245,600
65	74.9	216.9	218,300
70	73.6	215.4	195,700
75	72.2	213.7	176,700
80	70.8	211.9	160,600
85	69.3	210.0	146,600
90	67.9	208.0	134,400
95	66.5	205.8	123,700
100	65.0	203.4	114,300
105	63.5	200.9	105,800
110	62.0	198.2	98,200
115	60.5	195.3	91,300
120	58.9	192.3	85,100
125	57.4	189.1	79,400
130	55.8	185.6	74,200
135	54.1	182.0	69,500
140	52.5	178.1	65,100
145	50.7	174.0	61,000
150	49.0	169.6	57,200
155	47.2	165.0	53,700
160	45.3	160.0	50,400
165	43.4	154.7	47,300
170	41.4	149.1	44,400
175	39.3	142.9	41,700
180	37.1	136.4	39,100
185	34.8	129.2	36,700
190	32.3	121.4	34,400
195	29.7	112.7	32,200
200	26.8	103.0	30,000*
205	23.6	91.8	27,400*
210	19.8	78.6	24,900*
215	15.2	61.7	22,300*

226.4 ft

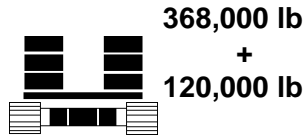
ft	ft	ft	lb
38	82.6	232.8	401,800*
40	82.1	232.5	395,100*
45	80.8	231.6	372,000*
50	79.5	230.7	321,400
55	78.2	229.6	278,700
60	76.9	228.4	244,900
65	75.6	227.1	217,600
70	74.3	225.6	194,900
75	73.0	224.1	175,900
80	71.6	222.4	159,700
85	70.3	220.6	145,700
90	68.9	218.6	133,600
95	67.5	216.5	122,900
100	66.2	214.3	113,400
105	64.8	211.9	104,900
110	63.3	209.4	97,300
115	61.9	206.7	90,400
120	60.4	203.8	84,200
125	59.0	200.8	78,500
130	57.5	197.6	73,300
135	55.9	194.1	68,500
140	54.4	190.5	64,100
145	52.8	186.7	60,000
150	51.1	182.7	56,200
155	49.5	178.4	52,700
160	47.8	173.8	49,400
165	46.0	169.0	46,300
170	44.2	163.8	43,400
175	42.3	158.3	40,700
180	40.4	152.4	38,100
185	38.3	146.1	35,700
190	36.2	139.3	33,400
195	33.9	131.9	31,300
200	31.5	123.8	29,000*
205	28.9	114.9	26,500*
210	26.1	104.9	24,100*
215	22.9	93.4	21,800*
220	19.2	79.7	19,400*

236.2 ft

ft	ft	ft	lb
38	82.9	242.7	394,100*
40	82.4	242.4	389,800*
45	81.2	241.6	369,200*
50	80.0	240.7	320,600
55	78.7	239.7	277,800
60	77.5	238.5	244,000
65	76.2	237.3	216,600
70	75.0	235.9	194,000
75	73.7	234.4	174,900
80	72.4	232.8	158,700
85	71.1	231.1	144,700
90	69.8	229.2	132,500
95	68.5	227.2	121,800
100	67.2	225.1	112,300
105	65.9	222.8	103,800
110	64.5	220.4	96,200
115	63.2	217.9	89,300
120	61.8	215.1	83,000
125	60.4	212.3	77,300
130	59.0	209.2	72,100
135	57.5	206.0	67,300
140	56.1	202.7	62,900
145	54.6	199.1	58,800
150	53.1	195.3	55,100
155	51.5	191.3	51,500
160	49.9	187.1	48,200
165	48.3	182.6	45,100
170	46.6	177.9	42,300
175	44.9	172.8	39,500
180	43.1	167.5	37,000
185	41.3	161.8	34,600
190	39.4	155.7	32,300
195	37.4	149.2	30,100*
200	35.3	142.1	27,600*
205	33.1	134.5	25,200*
210	30.7	126.2	22,900*
215	28.2	117.0	20,600*
220	25.4	106.7	18,400*
225	22.3	94.9	16,300*
230	18.7	80.8	14,200*

16000 S-4

ASME B30.5



246.1 ft

ft	ft	ft	lb
40	82.7	252.4	377,600*
45	81.5	251.6	366,500*
50	80.4	250.7	319,300*
55	79.2	249.7	277,200
60	78.0	248.6	243,300
65	76.8	247.4	215,900
70	75.6	246.1	193,200
75	74.4	244.7	174,100
80	73.2	243.2	157,800
85	71.9	241.5	143,800
90	70.7	239.7	131,600
95	69.4	237.8	120,900
100	68.2	235.8	111,300
105	66.9	233.6	102,800
110	65.6	231.3	95,200
115	64.3	228.9	88,300
120	63.0	226.3	82,100
125	61.7	223.6	76,400
130	60.4	220.8	71,200
135	59.0	217.7	66,400
140	57.6	214.5	61,900
145	56.2	211.2	57,800
150	54.8	207.6	54,000
155	53.3	203.9	50,500
160	51.9	199.9	47,200
165	50.3	195.8	44,100
170	48.8	191.4	41,200
175	47.2	186.7	38,500
180	45.6	181.8	36,000
185	43.9	176.6	33,500
190	42.2	171.1	31,100*
195	40.4	165.2	28,600*
200	38.5	158.9	26,100*
205	36.5	152.2	23,800*
210	34.5	144.9	21,500*
215	32.3	137.1	19,300*
220	30.0	128.5	17,200*
225	27.5	119.1	15,200*
230	24.8	108.5	13,200*
235	21.7	96.3	11,200*
240	18.2	81.8	9,200*

255.9 ft

ft	ft	ft	lb
40	83.0	262.3	358,500*
45	81.9	261.6	348,600*
50	80.7	260.7	317,600*
55	79.6	259.8	276,800
60	78.5	258.7	242,900
65	77.3	257.6	215,400
70	76.1	256.3	192,700
75	75.0	254.9	173,600
80	73.8	253.5	157,300
85	72.6	251.9	143,300
90	71.5	250.2	131,100
95	70.3	248.4	120,300
100	69.1	246.4	110,800
105	67.9	244.4	102,300
110	66.6	242.2	94,700
115	65.4	239.9	87,800
120	64.2	237.4	81,500
125	62.9	234.8	75,800
130	61.6	232.1	70,600
135	60.3	229.2	65,800
140	59.0	226.2	61,400
145	57.7	223.0	57,300
150	56.3	219.7	53,500
155	55.0	216.1	50,000
160	53.6	212.4	46,700
165	52.2	208.5	43,600
170	50.7	204.4	40,700
175	49.2	200.1	38,000
180	47.7	195.5	35,400
185	46.2	190.7	33,000*
190	44.6	185.6	30,300*
195	42.9	180.2	27,700*
200	41.2	174.5	25,300*
205	39.5	168.5	23,000*
210	37.6	162.0	20,800*
215	35.7	155.1	18,600*
220	33.7	147.6	16,600*
225	31.6	139.6	14,600*
230	29.3	130.8	12,700*
235	26.9	121.0	10,800*
240	24.2	110.2	9,000*
245	21.2	97.7	7,100*

265.8 ft

ft	ft	ft	lb
45	82.2	271.5	331,400*
50	81.1	270.7	315,400*
55	80.0	269.8	276,100
60	78.9	268.8	242,200
65	77.8	267.7	214,700
70	76.7	266.5	191,900
75	75.6	265.2	172,800
80	74.4	263.8	156,500
85	73.3	262.2	142,400
90	72.2	260.6	130,200
95	71.0	258.9	119,400
100	69.9	257.0	109,900
105	68.7	255.0	101,400
110	67.6	252.9	93,700
115	66.4	250.7	86,800
120	65.2	248.4	80,500
125	64.0	245.9	74,800
130	62.8	243.3	69,600
135	61.5	240.6	64,800
140	60.3	237.7	60,400
145	59.0	234.7	56,300
150	57.8	231.5	52,500
155	56.5	228.2	48,900
160	55.2	224.7	45,600
165	53.8	221.0	42,500
170	52.5	217.1	39,600
175	51.1	213.1	36,900
180	49.6	208.8	34,100*
185	48.2	204.3	31,300*
190	46.7	199.6	28,700*
195	45.2	194.6	26,200*
200	43.6	189.4	23,800*
205	42.0	183.8	21,500*
210	40.4	177.9	19,300*
215	38.6	171.7	17,200*
220	36.8	165.0	15,100*
225	35.0	157.9	13,200*
230	33.0	150.2	11,300*
235	30.9	141.9	9,500*
240	28.7	132.9	7,700*

16000 S-4

ASME B30.5



368,000 lb
+
120,000 lb



275.6 ft

ft	ft	ft	lb
45	82.5	281.5	320,300*
50	81.4	280.7	311,100*
55	80.3	279.8	275,500
60	79.3	278.9	241,500
65	78.2	277.8	213,900
70	77.2	276.6	191,200
75	76.1	275.4	172,000
80	75.0	274.0	155,700
85	73.9	272.5	141,600
90	72.8	271.0	129,400
95	71.7	269.3	118,600
100	70.6	267.5	109,100
105	69.5	265.6	100,500
110	68.4	263.6	92,900
115	67.3	261.5	86,000
120	66.1	259.2	79,700
125	65.0	256.9	74,000
130	63.8	254.4	68,800
135	62.7	251.8	64,000
140	61.5	249.1	59,500
145	60.3	246.2	55,400
150	59.1	243.2	51,600
155	57.8	240.0	48,100
160	56.6	236.7	44,800
165	55.3	233.2	41,700
170	54.0	229.6	38,800
175	52.7	225.7	35,700*
180	51.4	221.7	32,800*
185	50.0	217.5	30,000*
190	48.6	213.1	27,400*
195	47.2	208.4	24,900*
200	45.8	203.6	22,500*
205	44.3	198.4	20,200*
210	42.7	193.0	18,100*
215	41.2	187.3	16,000*
220	39.5	181.2	14,000*
225	37.8	174.8	12,100*
230	36.1	168.0	10,200*
235	34.2	160.6	8,400*

285.4 ft

ft	ft	ft	lb
45	82.7	291.4	304,900*
50	81.7	290.7	296,100*
55	80.7	289.8	273,700*
60	79.7	288.9	240,800
65	78.6	287.9	213,200
70	77.6	286.7	190,400
75	76.6	285.5	171,200
80	75.5	284.2	154,900
85	74.5	282.8	140,800
90	73.4	281.3	128,500
95	72.4	279.7	117,700
100	71.3	278.0	108,100
105	70.3	276.1	99,600
110	69.2	274.2	91,900
115	68.1	272.2	85,000
120	67.0	270.0	78,700
125	65.9	267.8	73,000
130	64.8	265.4	67,800
135	63.7	262.9	62,900
140	62.5	260.3	58,500
145	61.4	257.5	54,400
150	60.2	254.7	50,600
155	59.1	251.6	47,000
160	57.9	248.5	43,700
165	56.7	245.2	40,500*
170	55.5	241.7	37,200*
175	54.2	238.1	34,100*
180	53.0	234.3	31,200*
185	51.7	230.3	28,400*
190	50.4	226.2	25,800*
195	49.0	221.8	23,300*
200	47.7	217.2	20,900*
205	46.3	212.5	18,700*
210	44.9	207.4	16,500*
215	43.4	202.1	14,400*
220	41.9	196.6	12,500*
225	40.4	190.7	10,600*
230	38.8	184.4	8,700*
235	37.1	177.9	7,000*

295.3 ft

ft	ft	ft	lb
45	83.0	301.4	282,100*
50	82.0	300.6	278,000*
55	81.0	299.8	272,300*
60	80.0	298.9	240,200
65	79.0	297.9	212,600
70	78.0	296.8	189,800
75	77.0	295.7	170,600
80	76.0	294.4	154,300
85	75.0	293.0	140,200
90	74.0	291.6	127,900
95	73.0	290.0	117,100
100	72.0	288.4	107,500
105	71.0	286.6	98,900
110	69.9	284.8	91,300
115	68.9	282.8	84,400
120	67.8	280.8	78,100
125	66.8	278.6	72,300
130	65.7	276.3	67,100
135	64.6	273.9	62,300
140	63.5	271.4	57,800
145	62.4	268.8	53,700
150	61.3	266.0	49,900
155	60.2	263.1	46,400
160	59.1	260.1	42,900*
165	57.9	257.0	39,400*
170	56.8	253.7	36,100*
175	55.6	250.2	33,100*
180	54.4	246.6	30,100*
185	53.2	242.9	27,400*
190	52.0	238.9	24,800*
195	50.7	234.8	22,300*
200	49.4	230.5	19,900*
205	48.1	226.0	17,700*
210	46.8	221.3	15,600*
215	45.4	216.4	13,500*
220	44.0	211.2	11,500*
225	42.6	205.8	9,700*
230	41.1	200.0	7,800*