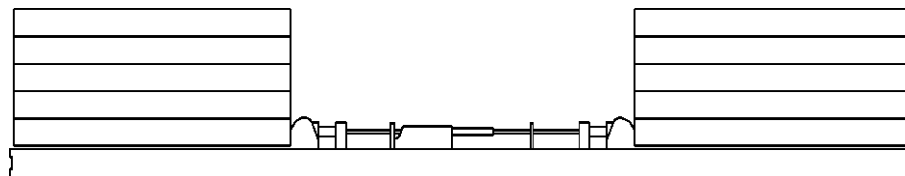


Counterweight Arrangements

Crane Counterweight

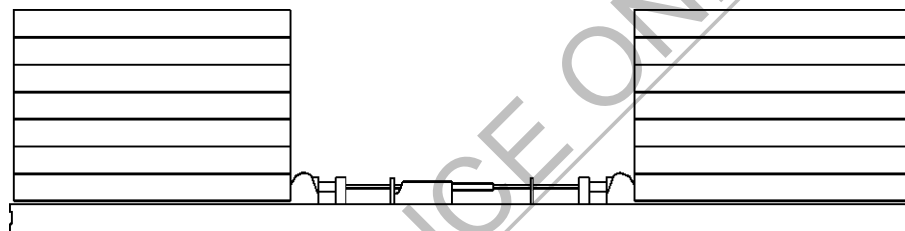


16000 SERIES 1

224,000 lb (101 600 kg) Crane Counterweight (10 Side Boxes)

+

0 lb (0 kg) Carbody Counterweight

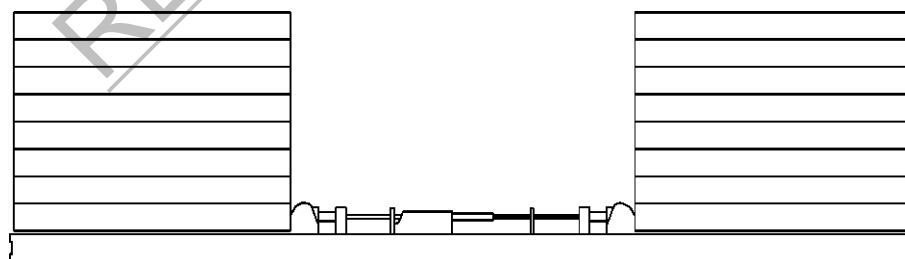


16000 SERIES 2

296,000 lb (134 260 kg) Crane Counterweight (14 Side Boxes)

+

60,000 lb (27 220 kg) Carbody Counterweight



16000 SERIES 3

332,000 lb (150 590 kg) Crane Counterweight (16 Side Boxes)

+

120,000 lb (54 430 kg) Carbody Counterweight

Counterweight Arrangements

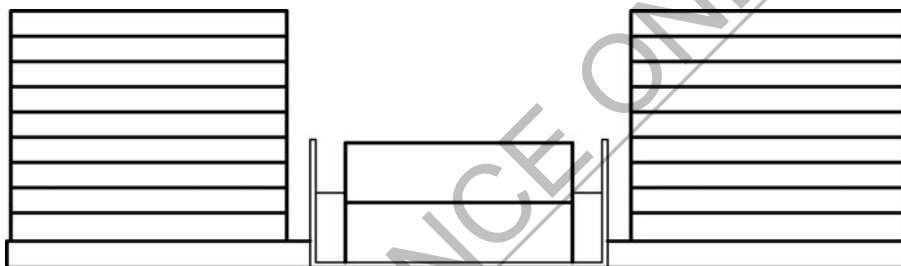
16000

Crane Counterweight



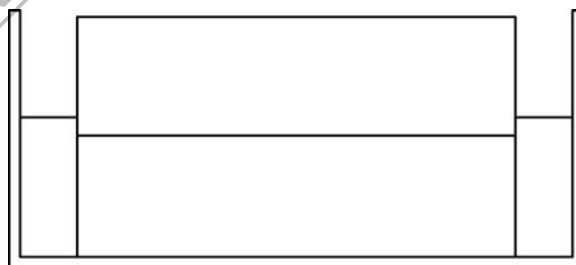
16000 SERIES 4 (WA)

368,000 lb (166 920 kg) Crane Counterweight (18 Side Boxes)
+
120,000 lb (54 430 kg) Carbody Counterweight



16000 SERIES 5

368,000 LB (166 920 kg) Crane Counterweight (18 Side Boxes)
+
41,300 lb (18 730 kg) Auxiliary Crane Counterweight (2 Rear Boxes)
+
120,000 lb (54 430 kg) Carbody Counterweight



16000 SERIES 5 Auxiliary Counterweight

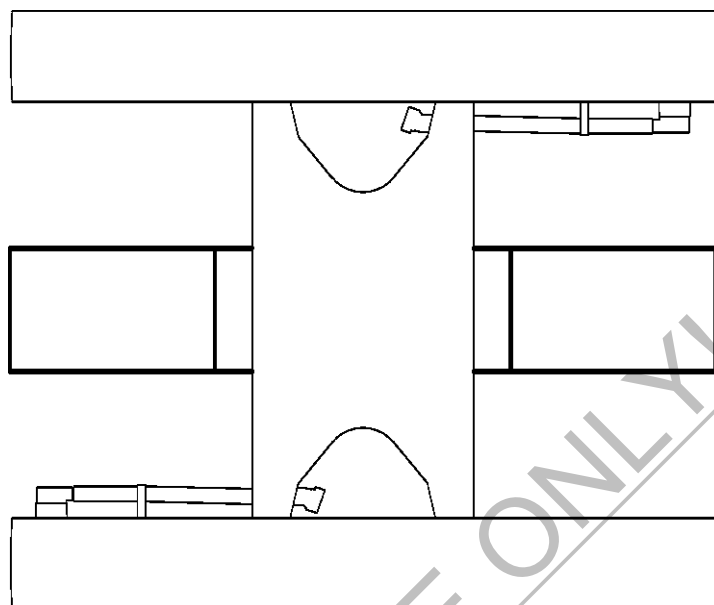
41,300 lb (18 730 kg) Auxiliary Counterweight
(2 Rear Boxes)

MACHINE MODIFICATION REQUIRED: 16000 SERIES 4 (WA) and 5 charts require machines manufactured prior to S/N 16001122 receive rotating bed modification No. 81011993.

Refer to Operator's Manual for crane counterweight identification.

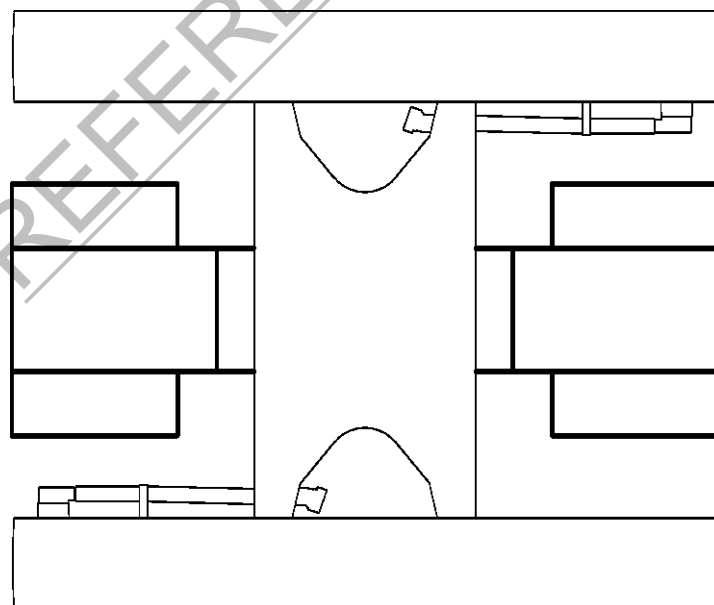
Counterweight Arrangements

Carbody Counterweight



16000 SERIES 2

60,000 lb (27 220 kg) Carbody Counterweight
(2 Center Boxes)

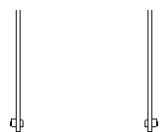


16000 SERIES 3, 4 (WA), 5

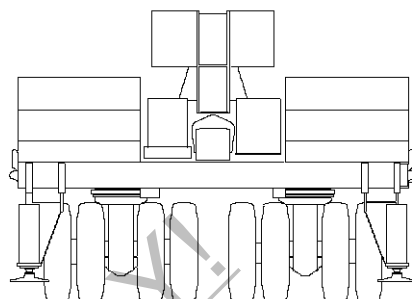
120,000 lb (54 430 kg) Carbody Counterweight
(2 Center Boxes - 4 Side Boxes)

Counterweight Arrangements

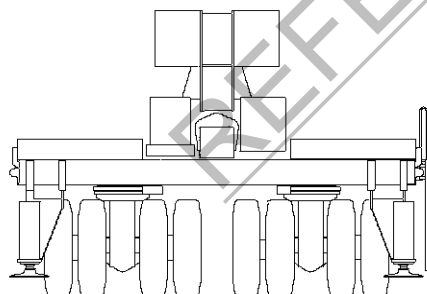
Wheeled Counterweight



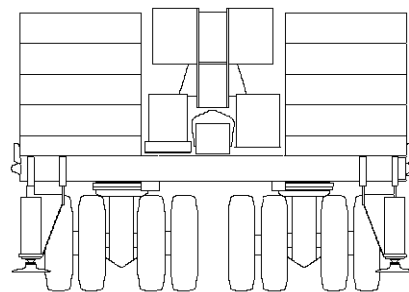
0 lb (0 kg) Wheeled Counterweight



335,400 lb (152 130 kg) Wheeled Counterweight
6 Side Boxes



159,400 lb (72 300 kg) Wheeled Counterweight
2 Side Boxes (small)



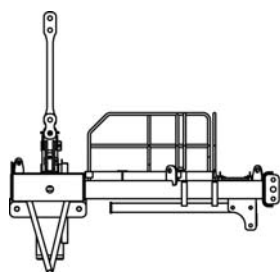
511,400 lb (231 970 kg) Wheeled Counterweight
10 Side Boxes

Refer to Operator's Manual for MAX-ER counterweight identification.

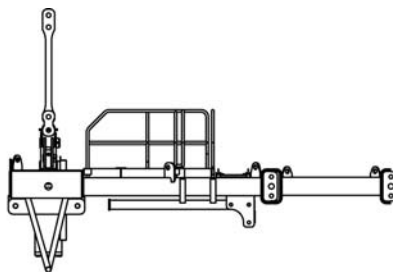
Counterweight Arrangements

16000

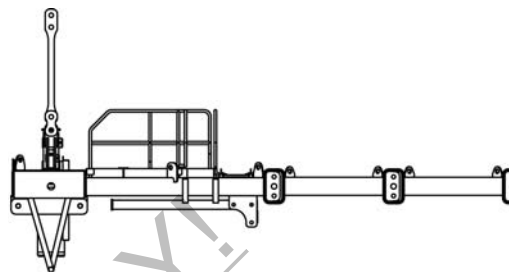
Hanging Counterweight



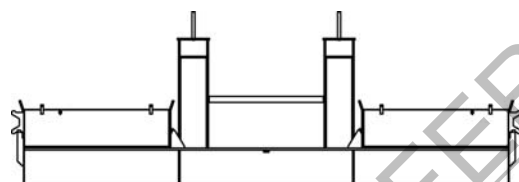
0 lb (0 kg)
Hanging Counterweight
11,0 m Position



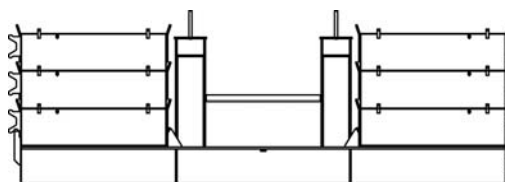
0 lb (0 kg)
Hanging Counterweight
13,0 m Position



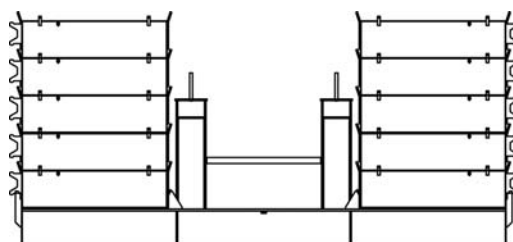
0 lb (0 kg)
Hanging Counterweight
15,0 m Position



137,850 lb (62 530 kg) Hanging Counterweight
2 Internal Tray Boxes, 2 Side Boxes



313,850 lb (142 360 kg) Hanging Counterweight
2 Internal Tray Boxes, 6 Side Boxes



489,850 lb (222 190 kg) Hanging Counterweight
2 Internal Tray Boxes, 10 Side Boxes