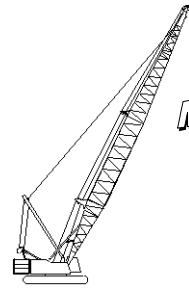




Liftcrane Boom Capacities

Boom No. 82LR
67 860 kg Counterweight
Rating Over End of Blocked Crawlers
No Travel - Limited Swing

Meets
ANSI B30.5
Requirements



999 SERIES 1

LIFTING CAPACITIES: Lifting capacities for various boom lengths and operating radii are for freely suspended loads and do not exceed 75% of a static tipping load over end of machine with crawlers blocked. Capacities based on structural competence are denoted by an asterisk (*).

Upper boom point capacity for liftcrane service with single part whip line is 13 380 kg. When boom butt mounted auxiliary drum is used, capacity with single part whip line is 9 070 kg. In all cases, upper boom point capacities cannot exceed those listed for main boom capacity.

Weight of jib, all load blocks, hooks, weight ball, slings, hoist lines, etc., beneath boom and jib point sheaves, is considered part of main boom load. Boom is not to be lowered beyond radii where combined weights are greater than rated capacity. Where no capacity is shown, operation is not intended or approved.

OPERATING CONDITIONS: Machine to operate in a level position on a firm uniformly supporting surface with gantry up. Drive and idler tumblers must be properly blocked so that centerline of tumblers becomes tipping fulcrum. Swing is limited

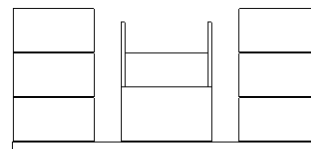
to that sector shown on Operating Range Diagram No. 8224-A. Refer to boom rigging No. 196100 and Wire Rope Specification chart No. 8315-A. Crane operator judgment must be used to allow for dynamic load effects of swinging, hoisting or lowering, wind conditions, as well as adverse operating conditions and physical machine depreciation. Refer to operators manual for operating guidelines.

OPERATING RADIUS: Operating radius is horizontal distance from axis of rotation to center of vertical hoist line or load block. Boom angle is angle between horizontal and centerline of boom butt and inserts, and is an indication of operating radius. In all cases, operating radius shall govern capacity.

BOOM POINT ELEVATION: Boom point elevation is vertical distance from ground level to centerline of boom point shaft.

MACHINE EQUIPMENT: Machine equipped with 8 585 mm crawlers, 1 219 mm treads, 3 124 mm retractable gantry, 9 144 mm live mast, 20 part boom hoist reeving, boom support straps and 67 860 kg counterweight.

Maximum Boom and Jib Lengths Lifted Unassisted		
WITHOUT BOOM CATWALKS		
Over End of Blocked Crawlers		
Boom Length	Jib No. 134	Jib No. 123
85.3m	—	—
82.3m	—	—
79.2m	12.2m	15.2m
76.2m	18.3m	18.3m
73.2m	24.4m	18.3m
WITH BOOM CATWALKS		
Over End of Blocked Crawlers		
Boom Length	Jib No. 134	Jib No. 123
85.3m	—	—
82.3m	—	—
79.2m	9.1m	(a) 15.2m
76.2m	(a) 18.3m	18.3m
73.2m	24.4m	18.3m
Load block, hook and weight ball on ground at start.		
(a) Machine must be equipped with lowerworks jacking cylinders.		



67 860 kg Crane Counterweight
6 Side Boxes - 1 Center Box

Boom Catwalks Deduct
Deduct 350 kg from capacities when boom catwalks are attached.

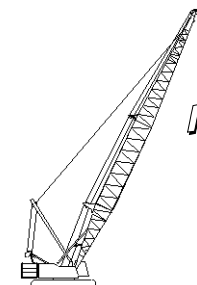
Deduct From Capacities When Jib Is Attached		
Jib Length	Jib No. 134	Jib No. 123
9.1m	1 220 kg	1 130 kg
12.2m	1 590 kg	1 410 kg
15.2m	1 950 kg	1 680 kg
18.3m	2 310 kg	2 000 kg
21.3m	2 770 kg	—
24.4m	3 220 kg	—

Consult jib chart for jib capacities.
Upper boom point cannot be used when jib is attached.



Liftcrane Boom Capacities

Meets
ANSI B30.5
Requirements



Boom No. 82LR
67 860 kg Counterweight
Rating Over End of Blocked Crawlers
No Travel - Limited Swing

999 SERIES 1

Oper. Rad. Meters	Boom Ang. Deg.	Boom Point Elev. Meters	Boom Capacity Kilograms
36.6m (120 Ft.) Boom			
7.3	80.9	38.6	120 400 *
8.0	79.8	38.5	119 600 *
9.0	78.2	38.3	110 200 *
10.0	76.6	38.1	100 900
11.0	75.0	37.8	86 700
12.0	73.4	37.5	75 600
13.0	71.7	37.2	67 000
14.0	70.1	36.9	60 000
15.0	68.4	36.5	54 200
16.0	66.7	36.1	49 400
18.0	63.2	35.1	41 800
20.0	59.7	34.1	36 000
22.0	56.0	32.8	31 500
24.0	52.1	31.3	28 000
26.0	48.0	29.7	25 000
28.0	43.6	27.7	22 500
30.0	38.9	25.4	20 400
32.0	33.6	22.7	18 600
34.0	27.4	19.3	17 000
36.0	19.5	14.7	15 600
39.6m (130 Ft.) Boom			
7.9	80.7	41.6	120 400 *
8.0	80.6	41.6	120 300 *
9.0	79.1	41.4	115 000 *
10.0	77.6	41.2	101 900
11.0	76.2	41.0	86 700
12.0	74.7	40.7	75 600
13.0	73.2	40.4	66 900
14.0	71.6	40.1	60 000
15.0	70.1	39.7	54 200
16.0	68.6	39.4	49 300
18.0	65.4	38.5	41 700
20.0	62.2	37.5	36 000
22.0	58.9	36.4	31 500
24.0	55.4	35.1	27 900
26.0	51.9	33.6	25 000
28.0	48.1	32.0	22 500
30.0	44.1	30.0	20 400
32.0	39.7	27.8	18 600
34.0	35.0	25.2	17 000
36.0	29.5	22.0	15 600
38.0	23.0	18.0	14 300

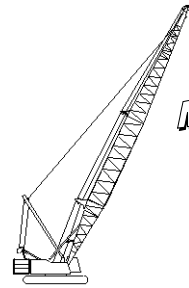
Oper. Rad. Meters	Boom Ang. Deg.	Boom Point Elev. Meters	Boom Capacity Kilograms
42.7m (140 Ft.) Boom			
8.5	80.5	44.6	120 400 *
9.0	79.9	44.5	114 600 *
10.0	78.5	44.3	102 000
11.0	77.2	44.1	86 700
12.0	75.8	43.9	75 600
13.0	74.4	43.6	66 900
14.0	73.0	43.3	59 900
15.0	71.6	43.0	54 100
16.0	70.2	42.6	49 300
18.0	67.3	41.8	41 700
20.0	64.3	40.9	35 900
22.0	61.3	39.9	31 400
24.0	58.2	38.8	27 800
26.0	55.0	37.4	24 900
28.0	51.7	36.0	22 400
30.0	48.1	34.3	20 300
32.0	44.4	32.4	18 500
34.0	40.4	30.2	16 900
36.0	36.1	27.6	15 500
38.0	31.3	24.6	14 300
40.0	25.6	20.9	13 200
42.0	18.5	16.0	12 200
45.7m (150 Ft.) Boom			
9.1	80.4	47.6	112 700 *
10.0	79.3	47.4	102 000
11.0	78.0	47.2	86 700
12.0	76.8	47.0	75 600
13.0	75.5	46.7	66 900
14.0	74.2	46.5	59 900
15.0	72.9	46.2	54 100
16.0	71.5	45.9	49 200
18.0	68.9	45.1	41 600
20.0	66.2	44.3	35 800
22.0	63.4	43.4	31 400
24.0	60.6	42.3	27 700
26.0	57.6	41.1	24 800
28.0	54.6	39.8	22 300
30.0	51.5	38.3	20 200
32.0	48.2	36.6	18 400
34.0	44.7	34.7	16 800
36.0	41.1	32.5	15 400
38.0	37.1	30.0	14 200
40.0	32.7	27.2	13 100
42.0	27.7	23.7	12 100
44.0	21.7	19.4	11 200

Oper. Rad. Meters	Boom Ang. Deg.	Boom Point Elev. Meters	Boom Capacity Kilograms
48.8m (160 Ft.) Boom			
9.1	81.0	50.7	107 000 *
10.0	80.0	50.5	102 400
11.0	78.8	50.3	86 600
12.0	77.6	50.1	75 500
13.0	76.4	49.9	66 800
14.0	75.2	49.6	59 700
15.0	74.0	49.4	53 900
16.0	72.7	49.1	49 100
18.0	70.3	48.4	41 400
20.0	67.7	47.6	35 700
22.0	65.2	46.7	31 200
24.0	62.6	45.8	27 500
26.0	59.9	44.7	24 600
28.0	57.1	43.4	22 100
30.0	54.3	42.1	20 000
32.0	51.3	40.6	18 200
34.0	48.2	38.9	16 600
36.0	45.0	37.0	15 200
38.0	41.6	34.9	14 000
40.0	37.9	32.5	12 900
42.0	33.9	29.7	11 900
44.0	29.4	26.4	11 000
46.0	24.2	22.5	10 200
51.8m (170 Ft.) Boom			
9.8	80.9	53.6	103 600 *
10.0	80.6	53.6	100 300
11.0	79.5	53.4	86 600
12.0	78.3	53.2	75 400
13.0	77.2	53.0	66 700
14.0	76.1	52.8	59 600
15.0	74.9	52.5	53 900
16.0	73.8	52.2	49 000
18.0	71.5	51.6	41 300
20.0	69.1	50.9	35 600
22.0	66.7	50.1	31 100
24.0	64.3	49.2	27 500
26.0	61.8	48.2	24 500
28.0	59.3	47.0	22 000
30.0	56.7	45.8	19 900
32.0	54.0	44.4	18 100
34.0	51.2	42.9	16 500
36.0	48.3	41.2	15 100
38.0	45.3	39.3	13 900
40.0	42.1	37.2	12 800
42.0	38.6	34.8	11 800
44.0	34.9	32.2	10 900
46.0	30.9	29.1	10 100
48.0	26.2	25.4	9 400
50.0	20.7	20.8	8 700



Liftcrane Boom Capacities

Meets
ANSI B30.5
Requirements



Boom No. 82LR
67 860 kg Counterweight
Rating Over End of Blocked Crawlers
No Travel - Limited Swing

999 SERIES 1

Oper. Rad. Meters	Boom Ang. Deg.	Boom Point Elev. Meters	Boom Capacity Kilograms
54.9m (180 Ft.) Boom			
10.4	80.7	56.6	93 600 *
11.0	80.1	56.5	86 600
12.0	79.0	56.3	75 400
13.0	77.9	56.1	66 600
14.0	76.9	55.9	59 600
15.0	75.8	55.7	53 800
16.0	74.7	55.4	48 900
18.0	72.5	54.8	41 200
20.0	70.3	54.1	35 500
22.0	68.1	53.4	30 900
24.0	65.8	52.5	27 300
26.0	63.5	51.6	24 400
28.0	61.1	50.5	21 900
30.0	58.7	49.4	19 700
32.0	56.3	48.1	17 900
34.0	53.7	46.7	16 300
36.0	51.1	45.2	15 000
38.0	48.3	43.5	13 800
40.0	45.5	41.6	12 700
42.0	42.5	39.5	11 700
44.0	39.3	37.2	10 800
46.0	35.8	34.6	10 000
48.0	32.1	31.6	9 300
50.0	27.9	28.2	8 600
52.0	23.1	24.0	8 000
57.9m (190 Ft.) Boom			
11.0	80.6	59.6	86 900
12.0	79.6	59.4	75 300
13.0	78.6	59.2	66 500
14.0	77.6	59.0	59 500
15.0	76.5	58.8	53 700
16.0	75.5	58.6	48 800
18.0	73.5	58.0	41 100
20.0	71.4	57.4	35 300
22.0	69.3	56.7	30 800
24.0	67.2	55.9	27 200
26.0	65.0	55.0	24 200
28.0	62.8	54.0	21 700
30.0	60.5	52.9	19 600
32.0	58.2	51.7	17 800
34.0	55.9	50.4	16 200
36.0	53.5	49.0	14 800
38.0	51.0	47.5	13 600
40.0	48.4	45.8	12 500

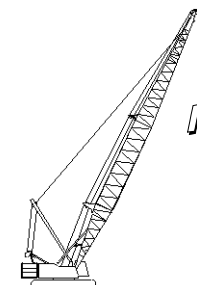
Oper. Rad. Meters	Boom Ang. Deg.	Boom Point Elev. Meters	Boom Capacity Kilograms
57.9m (190 Ft.) Boom			
42.0	45.7	43.9	11 600
44.0	42.8	41.8	10 700
46.0	39.8	39.6	9 900
48.0	36.6	37.0	9 200
50.0	33.2	34.2	8 500
52.0	29.4	30.9	7 900
54.0	25.0	27.0	7 300
56.0	19.8	22.1	6 800
61.0m (200 Ft.) Boom			
11.6	80.5	62.6	79 600
12.0	80.1	62.5	75 300
13.0	79.1	62.4	66 400
14.0	78.2	62.2	59 400
15.0	77.2	61.9	53 500
16.0	76.3	61.7	48 600
18.0	74.3	61.2	41 000
20.0	72.4	60.6	35 200
22.0	70.4	59.9	30 600
24.0	68.4	59.2	27 000
26.0	66.3	58.3	24 000
28.0	64.3	57.4	21 500
30.0	62.2	56.4	19 400
32.0	60.0	55.3	17 600
34.0	57.8	54.1	16 000
36.0	55.6	52.8	14 600
38.0	53.2	51.3	13 400
40.0	50.9	49.8	12 300
42.0	48.4	48.1	11 300
44.0	45.8	46.2	10 400
46.0	43.1	44.2	9 600
48.0	40.3	41.9	8 900
50.0	37.3	39.4	8 300
52.0	34.1	36.7	7 600
54.0	30.6	33.5	7 100
56.0	26.7	29.8	6 500
58.0	22.1	25.4	6 100
64.0m (210 Ft.) Boom			
11.6	81.0	65.7	76 400 *
12.0	80.6	65.6	74 300
13.0	79.7	65.5	66 300
14.0	78.8	65.3	59 200
15.0	77.8	65.1	53 400
16.0	76.9	64.8	48 500
18.0	75.1	64.3	40 800
20.0	73.2	63.8	35 000
22.0	71.3	63.1	30 500
24.0	69.4	62.4	26 800
26.0	67.5	61.6	23 900
28.0	65.6	60.8	21 400
30.0	63.6	59.8	19 200

Oper. Rad. Meters	Boom Ang. Deg.	Boom Point Elev. Meters	Boom Capacity Kilograms
64.0m (210 Ft.) Boom			
32.0	61.6	58.8	17 400
34.0	59.5	57.6	15 800
36.0	57.4	56.4	14 500
38.0	55.3	55.1	13 300
40.0	53.1	53.6	12 100
42.0	50.8	52.1	11 200
44.0	48.4	50.4	10 300
46.0	46.0	48.5	9 500
48.0	43.4	46.5	8 800
50.0	40.8	44.3	8 100
52.0	37.9	41.8	7 500
54.0	34.9	39.1	6 900
56.0	31.7	36.1	6 400
58.0	28.1	32.6	5 900
60.0	24.0	28.5	5 400
62.0	19.1	23.5	5 000
67.1m (220 Ft.) Boom			
12.2	80.8	68.7	69 100 *
13.0	80.1	68.6	66 700
14.0	79.3	68.4	59 100
15.0	78.4	68.2	53 300
16.0	77.5	68.0	48 400
18.0	75.8	67.5	40 700
20.0	74.0	66.9	34 900
22.0	72.2	66.3	30 400
24.0	70.4	65.7	26 700
26.0	68.6	64.9	23 700
28.0	66.7	64.1	21 200
30.0	64.9	63.2	19 100
32.0	63.0	62.2	17 300
34.0	61.0	61.2	15 700
36.0	59.1	60.0	14 300
38.0	57.0	58.8	13 100
40.0	55.0	57.4	12 000
42.0	52.9	55.9	11 000
44.0	50.7	54.4	10 100
46.0	48.5	52.7	9 300
48.0	46.1	50.8	8 600
50.0	43.7	48.8	7 900
52.0	41.2	46.6	7 300
54.0	38.5	44.2	6 800
56.0	35.7	41.6	6 200
58.0	32.6	38.6	5 700
60.0	29.3	35.3	5 300
62.0	25.6	31.5	4 900
64.0	21.3	26.8	4 400



Liftcrane Boom Capacities

Meets
ANSI B30.5
Requirements



Boom No. 82LR
67 860 kg Counterweight
Rating Over End of Blocked Crawlers
No Travel - Limited Swing

999 SERIES 1

Oper. Rad. Meters	Boom Ang. Deg.	Boom Point Elev. Meters	Boom Capacity Kilograms
70.1m (230 Ft.) Boom			
12.8	80.7	71.7	62 500 *
13.0	80.6	71.6	62 400 *
14.0	79.7	71.5	59 000
15.0	78.9	71.3	53 200
16.0	78.1	71.1	48 300
18.0	76.4	70.6	40 500
20.0	74.7	70.1	34 800
22.0	73.0	69.5	30 200
24.0	71.3	68.9	26 500
26.0	69.6	68.2	23 500
28.0	67.8	67.4	21 100
30.0	66.0	66.5	18 900
32.0	64.2	65.6	17 100
34.0	62.4	64.6	15 500
36.0	60.5	63.5	14 100
38.0	58.6	62.4	12 900
40.0	56.7	61.1	11 800
42.0	54.7	59.7	10 800
44.0	52.7	58.3	10 000
46.0	50.6	56.7	9 100
48.0	48.5	55.0	8 400
50.0	46.3	53.1	7 800
52.0	43.9	51.1	7 200
54.0	41.5	49.0	6 600
56.0	39.0	46.6	6 000
58.0	36.3	44.0	5 600
60.0	33.5	41.2	5 100
62.0	30.4	37.9	4 700
64.0	27.0	34.3	4 300
66.0	23.1	30.0	3 900
68.0	18.5	24.7	3 600
73.2m (240 Ft.) Boom			
13.4	80.6	74.7	56 700 *
14.0	80.2	74.6	56 500 *
15.0	79.4	74.4	53 300
16.0	78.6	74.2	48 100
18.0	77.0	73.8	40 400
20.0	75.4	73.3	34 600
22.0	73.7	72.7	30 000
24.0	72.1	72.1	26 300
26.0	70.5	71.4	23 300
28.0	68.8	70.7	20 800
30.0	67.1	69.9	18 700
32.0	65.4	69.0	16 900
34.0	63.6	68.0	15 300
36.0	61.9	67.0	13 900
38.0	60.1	65.9	12 700
40.0	58.3	64.7	11 600
42.0	56.4	63.4	10 600
44.0	54.5	62.0	9 700

Oper. Rad. Meters	Boom Ang. Deg.	Boom Point Elev. Meters	Boom Capacity Kilograms
73.2m (240 Ft.) Boom			
46.0	52.6	60.6	8 900
48.0	50.6	59.0	8 200
50.0	48.5	57.3	7 500
52.0	46.4	55.4	6 900
54.0	44.2	53.5	6 400
56.0	41.9	51.3	5 800
58.0	39.5	49.0	5 300
60.0	36.9	46.4	4 900
62.0	34.2	43.6	4 500
64.0	31.3	40.5	4 100
66.0	28.2	37.0	3 700
68.0	24.7	33.0	3 300
70.0	20.6	28.2	3 000
76.2m (250 Ft.) Boom			
13.4	81.0	77.8	51 600 *
14.0	80.6	77.7	51 300 *
15.0	79.8	77.5	51 000 *
16.0	79.0	77.3	48 900
18.0	77.5	76.9	40 300
20.0	76.0	76.4	34 400
22.0	74.4	75.9	29 800
24.0	72.8	75.3	26 200
26.0	71.3	74.6	23 200
28.0	69.7	73.9	20 600
30.0	68.1	73.2	18 500
32.0	66.4	72.3	16 700
34.0	64.8	71.4	15 100
36.0	63.1	70.4	13 700
38.0	61.4	69.4	12 500
40.0	59.7	68.3	11 400
42.0	57.9	67.0	10 400
44.0	56.1	65.7	9 500
46.0	54.3	64.4	8 700
48.0	52.4	62.9	8 000
50.0	50.5	61.3	7 300
52.0	48.5	59.6	6 700
54.0	46.5	57.7	6 200
56.0	44.4	55.8	5 600
58.0	42.2	53.6	5 100
60.0	39.9	51.3	4 700
62.0	37.5	48.8	4 300
64.0	34.9	46.1	3 900
66.0	32.2	43.1	3 500
68.0	29.3	39.7	3 200
70.0	26.0	35.9	2 800
72.0	22.3	31.5	2 500
74.0	18.0	26.0	2 200

Oper. Rad. Meters	Boom Ang. Deg.	Boom Point Elev. Meters	Boom Capacity Kilograms
79.2m (260 Ft.) Boom			
14.0	80.9	80.7	47 000 *
15.0	80.2	80.6	46 700 *
16.0	79.5	80.4	45 800
18.0	78.0	80.0	40 400
20.0	76.5	79.5	34 200
22.0	75.0	79.0	29 700
24.0	73.5	78.5	26 000
26.0	72.0	77.9	23 000
28.0	70.5	77.2	20 500
30.0	68.9	76.4	18 300
32.0	67.4	75.6	16 500
34.0	65.8	74.8	14 900
36.0	64.2	73.8	13 500
38.0	62.6	72.8	12 300
40.0	61.0	71.8	11 200
42.0	59.3	70.6	10 200
44.0	57.6	69.4	9 300
46.0	55.9	68.1	8 600
48.0	54.1	66.7	7 800
50.0	52.3	65.2	7 200
52.0	50.4	63.6	6 500
54.0	48.5	61.9	6 000
56.0	46.6	60.0	5 500
58.0	44.5	58.1	5 000
60.0	42.4	56.0	4 500
62.0	40.3	53.7	4 100
64.0	38.0	51.2	3 700
66.0	35.6	48.6	3 300
68.0	33.0	45.6	3 000
70.0	30.2	42.4	2 600
72.0	27.2	38.7	2 300
74.0	23.9	34.5	2 000

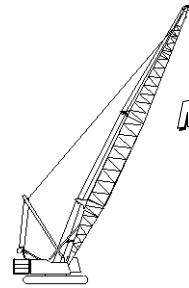


Liftcrane Boom Capacities

Meets
ANSI B30.5
 Requirements

Boom No. 82LR
67 860 kg Counterweight
Rating Over End of Blocked Crawlers
No Travel - Limited Swing

999 SERIES 1



Oper. Rad. Meters	Boom Ang. Deg.	Boom Point Elev. Meters	Boom Capacity Kilograms
82.3m (270 Ft.) Boom			
14.6	80.8	83.7	43 000 *
15.0	80.6	83.7	42 900 *
16.0	79.9	83.5	42 500 *
18.0	78.5	83.1	39 800
20.0	77.0	82.7	34 100
22.0	75.6	82.2	29 500
24.0	74.2	81.7	25 800
26.0	72.7	81.1	22 800
28.0	71.2	80.4	20 300
30.0	69.8	79.7	18 200
32.0	68.3	78.9	16 300
34.0	66.8	78.1	14 700
36.0	65.2	77.2	13 400
38.0	63.7	76.3	12 100
40.0	62.1	75.2	11 000
42.0	60.5	74.1	10 100
44.0	58.9	73.0	9 200
46.0	57.3	71.7	8 400
48.0	55.6	70.4	7 600
50.0	53.9	69.0	7 000
52.0	52.2	67.5	6 300
54.0	50.4	65.9	5 800
56.0	48.6	64.2	5 300
58.0	46.7	62.3	4 800
60.0	44.7	60.4	4 300
62.0	42.7	58.3	3 900
64.0	40.6	56.1	3 500
66.0	38.4	53.6	3 100
68.0	36.1	51.0	2 800
70.0	33.7	48.1	2 500
72.0	31.1	45.0	2 200
74.0	28.3	41.5	1 900

Oper. Rad. Meters	Boom Ang. Deg.	Boom Point Elev. Meters	Boom Capacity Kilograms
85.3m (280 Ft.) Boom			
15.2	80.8	86.7	38 800 *
16.0	80.2	86.6	38 600 *
18.0	78.9	86.2	38 000 *
20.0	77.5	85.8	33 900
22.0	76.1	85.3	29 300
24.0	74.7	84.8	25 600
26.0	73.3	84.2	22 600
28.0	71.9	83.6	20 100
30.0	70.5	82.9	18 000
32.0	69.1	82.2	16 100
34.0	67.6	81.4	14 500
36.0	66.2	80.6	13 100
38.0	64.7	79.6	11 900
40.0	63.2	78.7	10 800
42.0	61.7	77.6	9 800
44.0	60.2	76.5	8 900
46.0	58.6	75.3	8 100
48.0	57.0	74.1	7 400
50.0	55.4	72.7	6 700
52.0	53.7	71.3	6 100
54.0	52.1	69.8	5 500
56.0	50.3	68.2	5 000
58.0	48.6	66.5	4 500
60.0	46.8	64.6	4 100
62.0	44.9	62.7	3 700
64.0	42.9	60.6	3 300
66.0	40.9	58.4	2 900
68.0	38.8	56.0	2 500
70.0	36.6	53.4	2 200
72.0	34.3	50.6	1 900