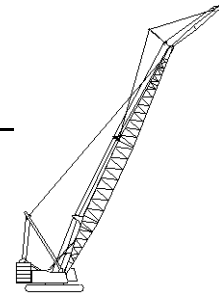




Liftcrane Jib Capacities

New York City Code
Jib No. 123 With 12 Ft. 6 in. Strut On
Boom No. 82LR
219,600 Lb. Crane Counterweight
80,000 Lb. Carbody Counterweight
360 Degree Rating

Meets
ANSI B30.5
Requirements



999 SERIES 3

LIFTING CAPACITIES: Chart supplements boom capacity chart **No. 8322-A**. Lifting capacities for various boom lengths, jib lengths and jib operating radii are for freely suspended loads and do not exceed 75% of a static tipping load for boom and jib length combinations thru 250 Ft. and New York City criteria of 1.4 factor applied to total machine moment for boom and jib length combinations 260 Ft. on up. Capacities based on structural competence are denoted by an asterisk (*).

Weight of all load blocks, hooks, weight ball, slings, hoist lines, etc., beneath boom and jib point sheaves, is considered part of jib load. Boom and jib are not to be lowered beyond radii where combined weights are greater than rated capacity. Where no capacity is shown, operation is not intended or approved.

OPERATING CONDITIONS: Machine to operate in a level position on a firm uniformly supporting surface with gantry up. Refer to boom rigging **No. 196100**, jib assembly **No. 196264** and Wire Rope Specification chart **No. 8315-A**. Crane operator judgment must be used to allow for dynamic load effects of swinging, hoisting or lowering, travel, wind conditions, as well as adverse operating conditions and physical machine depreciation. Refer to operators manual for operating guidelines.

MACHINE TRAVEL: Machine to travel on a firm, level and uniformly supporting surface and boom within boom angle range shown in capacity chart. Refer to Maximum Allowable Travel Specification chart **No. 8316-A**.

OPERATING RADIUS: Operating radius is horizontal distance from axis of rotation to center of vertical hoist line or load block. Boom angle is angle between horizontal and centerline of boom butt and inserts, and is an indication of operating radius. In all cases, operating radius shall govern capacity.

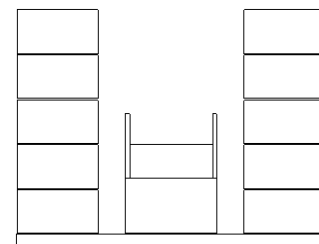
JIB POINT ELEVATION: Jib point elevation is vertical distance from ground level to centerline of jib point shaft.

MACHINE EQUIPMENT: Machine equipped with 28 Ft. 2 in. crawlers, 48 in. treads, 10 Ft. 3 in. retractable gantry, 30 Ft. live mast, 20 part boom hoist reeving, boom support straps, 219,600 Lb. crane counterweight, two 22,000 Lb. and two 18,000 Lb. carbody counterweights.

Maximum capacity on 26 mm wire rope is 29,500 Lbs. per line (20,000 Lbs. on 26 mm or 1 in. wire rope when auxiliary drum is used).

Maximum Boom and Jib Lengths Lifted Unassisted			
Over End of Blocked Crawlers		Over Side of Crawlers	
Boom Length	Jib No. 123	Boom Length	Jib No. 123
(a) 340 Ft.	—	320 Ft.	—
330 Ft.	—	310 Ft.	—
320 Ft.	—	300 Ft.	50 Ft.
310 Ft.	—	290 Ft.	60 Ft.
300 Ft.	60 Ft.		

Load block, hook and weight ball on ground at start. (a) Upper boom point cannot be used on 340 Ft. boom.



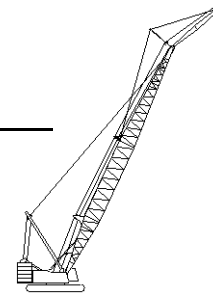
219,600 Lb. Crane Counterweight
10 Side Boxes - 1 Center Box



Liftcrane Jib Capacities

New York City Code
Jib No. 123 With 12 Ft. 6 in. Strut On
Boom No. 82LR
219,600 Lb. Crane Counterweight
80,000 Lb. Carbody Counterweight
360 Degree Rating

Meets
ANSI B30.5
Requirements



999 SERIES 3

30 Ft. JIB

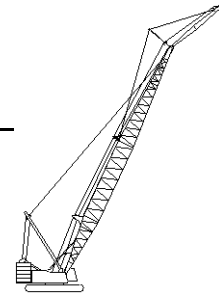
Jib Oper. Rad. Feet	0 Degree Offset			10 Degree Offset			20 Degree Offset			Jib Oper. Rad. Feet
	Boom Ang. Deg.	Jib Point Elev. Feet	Jib Capacity Pounds	Boom Ang. Deg.	Jib Point Elev. Feet	Jib Capacity Pounds	Boom Ang. Deg.	Jib Point Elev. Feet	Jib Capacity Pounds	
120 Ft. BOOM										
35	79.3	156.7	40,000 *							35
40	77.4	155.6	40,000 *	79.3	155.0	40,000*				40
45	75.4	154.3	40,000 *	77.3	153.7	40,000*	79.2	152.2	40,000*	45
50	73.5	152.9	40,000 *	75.4	152.2	40,000*	77.2	150.7	40,000*	50
55	71.5	151.2	40,000 *	73.4	150.6	40,000*	75.2	149.0	40,000*	55
60	69.5	149.4	40,000 *	71.3	148.7	40,000*	73.1	147.2	40,000*	60
65	67.4	147.3	40,000 *	69.3	146.6	40,000*	71.0	145.1	40,000*	65
70	65.4	145.1	40,000 *	67.2	144.4	40,000*	68.9	142.8	40,000*	70
75	63.2	142.6	40,000 *	65.1	141.9	40,000*	66.8	140.3	40,000*	75
80	61.1	139.9	40,000 *	62.9	139.1	40,000*	64.6	137.5	40,000*	80
85	58.9	136.9	40,000 *	60.7	136.1	40,000*	62.3	134.4	38,700*	85
90	56.6	133.6	40,000 *	58.4	132.9	40,000*	60.1	131.1	37,400*	90
100	51.9	126.2	40,000 *	53.7	125.4	40,000*	55.2	123.6	35,100*	100
110	46.9	117.4	40,000 *	48.6	116.6	39,100*	50.1	114.6	33,200*	110
120	41.4	106.9	40,000 *	43.1	105.9	36,500*	44.4	103.7	31,700*	120
130	35.2	93.9	38,500 *	36.8	92.7	34,400*				130
140	27.8	77.0	35,600 *	29.3	75.6	32,600*				140
130 Ft. BOOM										
35	80.0	166.9	40,000 *							35
40	78.2	165.9	40,000 *	80.0	165.2	40,000*				40
45	76.4	164.7	40,000 *	78.1	164.0	40,000*	79.9	162.5	40,000*	45
50	74.5	163.3	40,000 *	76.3	162.7	40,000*	78.0	161.1	40,000*	50
55	72.7	161.8	40,000 *	74.4	161.1	40,000*	76.1	159.6	40,000*	55
60	70.8	160.1	40,000 *	72.5	159.4	40,000*	74.2	157.8	40,000*	60
65	68.9	158.2	40,000 *	70.6	157.5	40,000*	72.3	155.9	40,000*	65
70	67.0	156.1	40,000 *	68.7	155.4	40,000*	70.4	153.8	40,000*	70
75	65.0	153.8	40,000 *	66.7	153.0	40,000*	68.4	151.4	40,000*	75
80	63.0	151.3	40,000 *	64.8	150.5	40,000*	66.4	148.9	40,000*	80
85	61.0	148.5	40,000 *	62.7	147.8	40,000*	64.3	146.1	39,900*	85
90	59.0	145.5	40,000 *	60.6	144.8	40,000*	62.2	143.1	38,600*	90
100	54.7	138.8	40,000 *	56.3	138.0	40,000*	57.8	136.2	36,300*	100
110	50.2	130.9	40,000 *	51.8	130.1	40,000*	53.2	128.2	34,300*	110
120	45.3	121.6	40,000 *	46.9	120.7	38,300*	48.3	118.6	32,700*	120
130	40.0	110.5	40,000 *	41.6	109.5	35,900*	42.8	107.2	31,300*	130
140	34.0	96.9	37,000	35.5	95.7	34,000*				140
150	26.9	79.4	33,600							150



Liftcrane Jib Capacities

New York City Code
Jib No. 123 With 12 Ft. 6 in. Strut On
Boom No. 82LR
219,600 Lb. Crane Counterweight
80,000 Lb. Carbody Counterweight
360 Degree Rating

Meets
ANSI B30.5
Requirements



999 SERIES 3

30 Ft. JIB

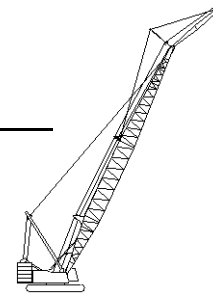
Jib Oper. Rad. Feet	0 Degree Offset			10 Degree Offset			20 Degree Offset			Jib Oper. Rad. Feet
	Boom Ang. Deg.	Jib Point Elev. Feet	Jib Capacity Pounds	Boom Ang. Deg.	Jib Point Elev. Feet	Jib Capacity Pounds	Boom Ang. Deg.	Jib Point Elev. Feet	Jib Capacity Pounds	
140 Ft. BOOM										
35	80.6	177.1	40,000 *							35
40	78.9	176.1	40,000 *	80.6	175.4	40,000*				40
45	77.2	175.0	40,000 *	78.8	174.3	40,000*	80.5	172.8	40,000*	45
50	75.5	173.7	40,000 *	77.1	173.0	40,000*	78.7	171.5	40,000*	50
55	73.7	172.3	40,000 *	75.4	171.6	40,000*	77.0	170.1	40,000*	55
60	72.0	170.7	40,000 *	73.6	170.0	40,000*	75.2	168.4	40,000*	60
65	70.2	168.9	40,000 *	71.8	168.2	40,000*	73.4	166.6	40,000*	65
70	68.4	166.9	40,000 *	70.0	166.2	40,000*	71.6	164.6	40,000*	70
75	66.6	164.8	40,000 *	68.2	164.1	40,000*	69.7	162.5	40,000*	75
80	64.7	162.5	40,000 *	66.4	161.7	40,000*	67.9	160.1	40,000*	80
85	62.9	159.9	40,000 *	64.5	159.2	40,000*	66.0	157.5	40,000*	85
90	61.0	157.2	40,000 *	62.6	156.4	40,000*	64.0	154.7	39,700*	90
100	57.0	151.0	40,000 *	58.6	150.2	40,000*	60.0	148.5	37,400*	100
110	52.9	143.8	40,000 *	54.5	143.0	40,000*	55.9	141.1	35,400*	110
120	48.6	135.5	40,000 *	50.1	134.6	40,000*	51.4	132.6	33,600*	120
130	43.9	125.7	40,000 *	45.4	124.7	37,500*	46.6	122.5	32,200*	130
140	38.8	114.0	36,800	40.2	113.0	35,500*	41.3	110.6	31,000*	140
150	33.0	99.8	33,300	34.3	98.6	33,500				150
160	26.0	81.7	30,300							160
150 Ft. BOOM										
40	79.5	186.3	40,000 *							40
45	77.9	185.3	40,000 *	79.5	184.6	40,000*	81.0	183.1	40,000*	45
50	76.3	184.0	40,000 *	77.8	183.4	40,000*	79.4	181.8	40,000*	50
55	74.6	182.7	40,000 *	76.2	182.0	40,000*	77.7	180.5	40,000*	55
60	73.0	181.2	40,000 *	74.6	180.5	40,000*	76.1	178.9	40,000*	60
65	71.3	179.5	40,000 *	72.9	178.8	40,000*	74.4	177.2	40,000*	65
70	69.6	177.7	40,000 *	71.2	177.0	40,000*	72.7	175.4	40,000*	70
75	67.9	175.7	40,000 *	69.5	175.0	40,000*	71.0	173.4	40,000*	75
80	66.2	173.5	40,000 *	67.8	172.8	40,000*	69.2	171.1	40,000*	80
85	64.5	171.1	40,000 *	66.0	170.4	40,000*	67.4	168.7	40,000*	85
90	62.7	168.6	40,000 *	64.2	167.8	40,000*	65.6	166.2	40,000*	90
100	59.1	162.9	40,000 *	60.6	162.1	40,000*	61.9	160.4	38,500*	100
110	55.3	156.3	40,000 *	56.8	155.5	40,000*	58.1	153.6	36,400*	110
120	51.3	148.6	40,000 *	52.8	147.8	40,000*	54.1	145.9	34,600*	120
130	47.1	139.8	40,000 *	48.5	138.9	39,100*	49.8	136.9	33,100*	130
140	42.6	129.6	36,500	44.0	128.6	36,700	45.1	126.3	31,800*	140
150	37.6	117.4	33,000	39.0	116.3	33,200	40.0	113.8	30,800*	150
160	32.0	102.7	30,000	33.3	101.4	30,200				160
170	25.3	83.9	27,300 *							170



Liftcrane Jib Capacities

New York City Code
 Jib No. 123 With 12 Ft. 6 in. Strut On
 Boom No. 82LR
 219,600 Lb. Crane Counterweight
 80,000 Lb. Carbody Counterweight
 360 Degree Rating

Meets
 ANSI B30.5
 Requirements



999 SERIES 3

30 Ft. JIB

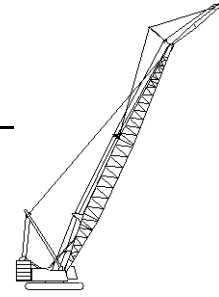
Jib Oper. Rad. Feet	0 Degree Offset			10 Degree Offset			20 Degree Offset			Jib Oper. Rad. Feet
	Boom Ang. Deg.	Jib Point Elev. Feet	Jib Capacity Pounds	Boom Ang. Deg.	Jib Point Elev. Feet	Jib Capacity Pounds	Boom Ang. Deg.	Jib Point Elev. Feet	Jib Capacity Pounds	
160 Ft. BOOM										
40	80.1	196.5	40,000*							40
45	78.5	195.5	40,000*	80.0	194.8	40,000*				45
50	77.0	194.4	40,000*	78.5	193.7	40,000*	80.0	192.1	40,000*	50
55	75.5	193.1	40,000*	76.9	192.4	40,000*	78.4	190.8	40,000*	55
60	73.9	191.6	40,000*	75.4	191.0	40,000*	76.8	189.4	40,000*	60
65	72.3	190.1	40,000*	73.8	189.4	40,000*	75.2	187.8	40,000*	65
70	70.8	188.3	40,000*	72.2	187.6	40,000*	73.6	186.0	40,000*	70
75	69.2	186.5	40,000*	70.6	185.7	40,000*	72.0	184.1	40,000*	75
80	67.5	184.4	40,000*	69.0	183.7	40,000*	70.4	182.1	40,000*	80
85	65.9	182.2	40,000*	67.4	181.5	40,000*	68.7	179.8	40,000*	85
90	64.3	179.8	40,000*	65.7	179.1	40,000*	67.0	177.4	40,000*	90
100	60.9	174.5	40,000*	62.3	173.7	40,000*	63.6	172.0	39,500*	100
110	57.4	168.4	40,000*	58.8	167.6	40,000*	60.0	165.8	37,400*	110
120	53.7	161.4	40,000*	55.1	160.5	40,000*	56.3	158.6	35,600*	120
130	49.9	153.3	40,000*	51.2	152.4	40,000*	52.4	150.4	34,000*	130
140	45.8	144.1	36,000	47.1	143.1	36,300	48.2	141.0	32,700*	140
150	41.4	133.3	32,500	42.7	132.3	32,800	43.7	130.0	31,500*	150
160	36.6	120.7	29,500	37.8	119.6	29,700				160
170	31.1	105.5	26,900	32.3	104.1	27,100				170
180	24.6	86.1	24,100*							180



Liftcrane Jib Capacities

New York City Code
Jib No. 123 With 12 Ft. 6 in. Strut On
Boom No. 82LR
219,600 Lb. Crane Counterweight
80,000 Lb. Carbody Counterweight
360 Degree Rating

Meets
ANSI B30.5
Requirements



999 SERIES 3

30 Ft. JIB

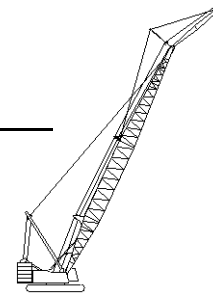
Jib Oper. Rad. Feet	0 Degree Offset			10 Degree Offset			20 Degree Offset			Jib Oper. Rad. Feet
	Boom Ang. Deg.	Jib Point Elev. Feet	Jib Capacity Pounds	Boom Ang. Deg.	Jib Point Elev. Feet	Jib Capacity Pounds	Boom Ang. Deg.	Jib Point Elev. Feet	Jib Capacity Pounds	
170 Ft. BOOM										
40	80.6	206.6	40,000 *							40
45	79.1	205.7	40,000 *	80.5	205.0	40,000*				45
50	77.7	204.6	40,000 *	79.1	203.9	40,000*	80.5	202.4	40,000*	50
55	76.2	203.4	40,000 *	77.6	202.7	40,000*	79.0	201.2	40,000*	55
60	74.7	202.1	40,000 *	76.1	201.4	40,000*	77.5	199.8	40,000*	60
65	73.2	200.6	40,000 *	74.6	199.9	40,000*	76.0	198.3	40,000*	65
70	71.8	198.9	40,000 *	73.1	198.2	40,000*	74.5	196.6	40,000*	70
75	70.2	197.2	40,000 *	71.6	196.4	40,000*	73.0	194.8	40,000*	75
80	68.7	195.2	40,000 *	70.1	194.5	40,000*	71.4	192.9	40,000*	80
85	67.2	193.2	40,000 *	68.6	192.4	40,000*	69.9	190.8	40,000*	85
90	65.6	190.9	40,000 *	67.0	190.2	40,000*	68.3	188.5	40,000*	90
100	62.4	185.9	40,000 *	63.8	185.2	40,000*	65.1	183.4	40,000*	100
110	59.2	180.2	40,000 *	60.5	179.4	40,000*	61.7	177.6	38,300*	110
120	55.8	173.7	40,000 *	57.1	172.9	40,000*	58.3	171.0	36,500*	120
130	52.2	166.3	39,600	53.5	165.4	40,000*	54.7	163.5	34,900*	130
140	48.5	157.8	35,600	49.8	156.9	35,900	50.9	154.9	33,500*	140
150	44.6	148.2	32,200	45.8	147.2	32,500	46.9	145.0	32,300*	150
160	40.3	137.0	29,200	41.5	135.9	29,400	42.5	133.6	29,600	160
170	35.6	123.9	26,600	36.8	122.7	26,800				170
180	30.3	108.2	24,200	31.4	106.8	24,400				180
190	24.0	88.2	21,300 *							190



Liftcrane Jib Capacities

New York City Code
 Jib No. 123 With 12 Ft. 6 in. Strut On
 Boom No. 82LR
 219,600 Lb. Crane Counterweight
 80,000 Lb. Carbody Counterweight
 360 Degree Rating

Meets
 ANSI B30.5
 Requirements



999 SERIES 3

30 Ft. JIB

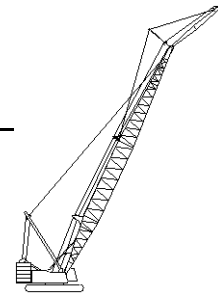
Jib Oper. Rad. Feet	0 Degree Offset			10 Degree Offset			20 Degree Offset			Jib Oper. Rad. Feet
	Boom Ang. Deg.	Jib Point Elev. Feet	Jib Capacity Pounds	Boom Ang. Deg.	Jib Point Elev. Feet	Jib Capacity Pounds	Boom Ang. Deg.	Jib Point Elev. Feet	Jib Capacity Pounds	
180 Ft. BOOM										
40	81.0	216.8	40,000 *							40
45	79.6	215.9	40,000 *	81.0	215.2	40,000*				45
50	78.3	214.9	40,000 *	79.6	214.2	40,000*	80.9	212.6	40,000*	50
55	76.9	213.7	40,000 *	78.2	213.0	40,000*	79.5	211.5	40,000*	55
60	75.5	212.4	40,000 *	76.8	211.7	40,000*	78.1	210.2	40,000*	60
65	74.1	211.0	40,000 *	75.4	210.3	40,000*	76.7	208.7	40,000*	65
70	72.6	209.5	40,000 *	74.0	208.8	40,000*	75.3	207.2	40,000*	70
75	71.2	207.8	40,000 *	72.5	207.1	40,000*	73.8	205.5	40,000*	75
80	69.8	206.0	40,000 *	71.1	205.2	40,000*	72.4	203.6	40,000*	80
85	68.3	204.0	40,000 *	69.6	203.3	40,000*	70.9	201.6	40,000*	85
90	66.8	201.9	40,000 *	68.2	201.1	40,000*	69.4	199.5	40,000*	90
100	63.9	197.2	40,000 *	65.2	196.4	40,000*	66.4	194.7	40,000*	100
110	60.8	191.8	40,000 *	62.1	191.0	40,000*	63.3	189.3	39,300*	110
120	57.6	185.7	40,000 *	58.9	184.9	40,000*	60.0	183.1	37,400*	120
130	54.3	178.8	39,300	55.6	178.0	39,700	56.7	176.1	35,700*	130
140	50.9	171.0	35,300	52.1	170.2	35,600	53.2	168.2	34,300*	140
150	47.3	162.2	31,800	48.5	161.3	32,100	49.5	159.2	32,400	150
160	43.4	152.1	28,900	44.6	151.1	29,100	45.6	148.9	29,300	160
170	39.3	140.6	26,200	40.4	139.5	26,400	41.3	137.0	26,600	170
180	34.7	127.0	23,900	35.8	125.8	24,100				180
190	29.6	110.8	21,800	30.6	109.4	22,000				190
200	23.4	90.2	18,800 *							200



Liftcrane Jib Capacities

New York City Code
 Jib No. 123 With 12 Ft. 6 in. Strut On
 Boom No. 82LR
 219,600 Lb. Crane Counterweight
 80,000 Lb. Carbody Counterweight
 360 Degree Rating

Meets
 ANSI B30.5
 Requirements



999 SERIES 3

30 Ft. JIB

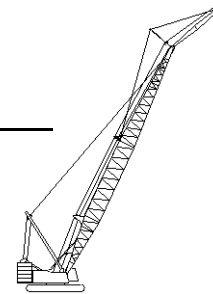
Jib Oper. Rad. Feet	0 Degree Offset			10 Degree Offset			20 Degree Offset			Jib Oper. Rad. Feet
	Boom Ang. Deg.	Jib Point Elev. Feet	Jib Capacity Pounds	Boom Ang. Deg.	Jib Point Elev. Feet	Jib Capacity Pounds	Boom Ang. Deg.	Jib Point Elev. Feet	Jib Capacity Pounds	
190 Ft. BOOM										
45	80.1	226.1	40,000 *							45
50	78.8	225.1	40,000 *	80.1	224.4	40,000*				50
55	77.5	224.0	40,000 *	78.8	223.3	40,000*	80.0	221.7	40,000*	55
60	76.1	222.8	40,000 *	77.4	222.1	40,000*	78.7	220.5	40,000*	60
65	74.8	221.4	40,000 *	76.1	220.7	40,000*	77.3	219.1	40,000*	65
70	73.5	220.0	40,000 *	74.7	219.2	40,000*	76.0	217.6	40,000*	70
75	72.1	218.4	40,000 *	73.4	217.6	40,000*	74.6	216.0	40,000*	75
80	70.7	216.6	40,000 *	72.0	215.9	40,000*	73.2	214.3	40,000*	80
85	69.3	214.8	40,000 *	70.6	214.0	40,000*	71.8	212.4	40,000*	85
90	68.0	212.8	40,000 *	69.2	212.0	40,000*	70.4	210.4	40,000*	90
100	65.1	208.3	40,000 *	66.4	207.6	40,000*	67.5	205.9	40,000*	100
110	62.2	203.2	40,000 *	63.5	202.5	40,000*	64.6	200.7	40,000*	110
120	59.2	197.5	40,000 *	60.5	196.7	40,000*	61.6	194.9	38,300*	120
130	56.2	191.1	39,000	57.4	190.3	39,300	58.5	188.4	36,600*	130
140	53.0	183.8	34,900	54.2	183.0	35,300	55.2	181.0	35,100*	140
150	49.6	175.7	31,500	50.8	174.8	31,800	51.8	172.7	32,100	150
160	46.1	166.5	28,500	47.3	165.5	28,800	48.2	163.3	29,000	160
170	42.4	156.0	25,900	43.5	155.0	26,100	44.4	152.7	26,300	170
180	38.3	144.0	23,600	39.4	142.9	23,800	40.3	140.4	23,900	180
190	33.9	130.1	21,500	35.0	128.8	21,700				190
200	28.9	113.3	19,600	29.9	111.9	19,800				200
210	22.8	92.2	16,700 *							210



Liftcrane Jib Capacities

New York City Code
 Jib No. 123 With 12 Ft. 6 in. Strut On
 Boom No. 82LR
 219,600 Lb. Crane Counterweight
 80,000 Lb. Carbody Counterweight
 360 Degree Rating

Meets
 ANSI B30.5
 Requirements



999 SERIES 3

30 Ft. JIB

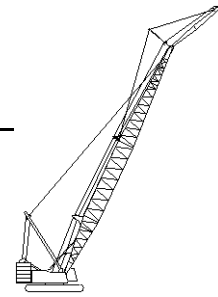
Jib Oper. Rad. Feet	0 Degree Offset			10 Degree Offset			20 Degree Offset			Jib Oper. Rad. Feet
	Boom Ang. Deg.	Jib Point Elev. Feet	Jib Capacity Pounds	Boom Ang. Deg.	Jib Point Elev. Feet	Jib Capacity Pounds	Boom Ang. Deg.	Jib Point Elev. Feet	Jib Capacity Pounds	
200 Ft. BOOM										
45	80.5	236.2	40,000 *							45
50	79.3	235.3	40,000 *	80.5	234.6	40,000*				50
55	78.0	234.2	40,000 *	79.3	233.5	40,000*	80.5	232.0	40,000*	55
60	76.8	233.1	40,000 *	78.0	232.4	40,000*	79.2	230.8	40,000*	60
65	75.5	231.8	40,000 *	76.7	231.1	40,000*	77.9	229.5	40,000*	65
70	74.2	230.4	40,000 *	75.4	229.7	40,000*	76.6	228.1	40,000*	70
75	72.9	228.9	40,000 *	74.1	228.2	40,000*	75.3	226.5	40,000*	75
80	71.6	227.2	40,000 *	72.8	226.5	40,000*	74.0	224.9	40,000*	80
85	70.3	225.5	40,000 *	71.5	224.7	40,000*	72.6	223.1	40,000*	85
90	69.0	223.5	40,000 *	70.2	222.8	40,000*	71.3	221.1	40,000*	90
100	66.3	219.3	40,000 *	67.5	218.6	40,000*	68.6	216.9	40,000*	100
110	63.5	214.5	40,000 *	64.7	213.8	40,000*	65.8	212.0	40,000*	110
120	60.7	209.1	40,000 *	61.9	208.3	40,000*	63.0	206.6	39,100*	120
130	57.8	203.1	38,400	59.0	202.3	38,900	60.0	200.4	37,400*	130
140	54.8	196.3	34,400	56.0	195.4	34,800	57.0	193.5	35,100	140
150	51.7	188.7	31,000	52.9	187.8	31,300	53.8	185.8	31,600	150
160	48.5	180.2	28,000	49.6	179.3	28,300	50.5	177.2	28,500	160
170	45.0	170.6	25,400	46.1	169.6	25,600	47.0	167.4	25,800	170
180	41.4	159.8	23,000	42.5	158.7	23,300	43.3	156.4	23,400	180
190	37.5	147.4	21,000	38.5	146.3	21,200	39.3	143.7	21,300	190
200	33.1	133.0	19,100	34.1	131.7	19,300				200
210	28.2	115.8	17,000 *	29.1	114.3	17,400*				210
220	22.3	94.1	14,200 *							220



Liftcrane Jib Capacities

New York City Code
 Jib No. 123 With 12 Ft. 6 in. Strut On
 Boom No. 82LR
 219,600 Lb. Crane Counterweight
 80,000 Lb. Carbody Counterweight
 360 Degree Rating

Meets
 ANSI B30.5
 Requirements



999 SERIES 3

30 Ft. JIB

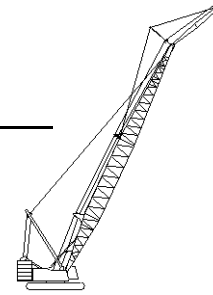
Jib Oper. Rad. Feet	0 Degree Offset			10 Degree Offset			20 Degree Offset			Jib Oper. Rad. Feet
	Boom Ang. Deg.	Jib Point Elev. Feet	Jib Capacity Pounds	Boom Ang. Deg.	Jib Point Elev. Feet	Jib Capacity Pounds	Boom Ang. Deg.	Jib Point Elev. Feet	Jib Capacity Pounds	
210 Ft. BOOM										
45	80.9	246.4	40,000 *							45
50	79.7	245.5	40,000 *	80.9	244.8	40,000*				50
55	78.5	244.5	40,000 *	79.7	243.8	40,000*	80.9	242.2	40,000*	55
60	77.3	243.4	40,000 *	78.5	242.7	40,000*	79.6	241.1	40,000*	60
65	76.1	242.1	40,000 *	77.3	241.4	40,000*	78.4	239.8	40,000*	65
70	74.9	240.8	40,000 *	76.0	240.1	40,000*	77.2	238.5	40,000*	70
75	73.6	239.3	40,000 *	74.8	238.6	40,000*	75.9	237.0	40,000*	75
80	72.4	237.8	40,000 *	73.5	237.0	40,000*	74.7	235.4	40,000*	80
85	71.1	236.1	40,000 *	72.3	235.3	40,000*	73.4	233.7	40,000*	85
90	69.9	234.3	40,000 *	71.0	233.5	40,000*	72.1	231.9	40,000*	90
100	67.3	230.2	40,000 *	68.5	229.5	40,000*	69.5	227.8	40,000*	100
110	64.7	225.7	40,000 *	65.8	224.9	40,000*	66.9	223.2	40,000*	110
120	62.0	220.6	40,000 *	63.2	219.8	40,000*	64.2	218.0	39,800*	120
130	59.3	214.9	38,000	60.4	214.0	38,500	61.4	212.2	38,200*	130
140	56.5	208.5	34,000	57.6	207.6	34,400	58.6	205.8	34,800	140
150	53.6	201.3	30,600	54.7	200.5	30,900	55.6	198.5	31,200	150
160	50.6	193.4	27,600	51.6	192.5	27,900	52.6	190.5	28,200	160
170	47.4	184.6	25,000	48.5	183.6	25,200	49.3	181.5	25,500	170
180	44.0	174.7	22,600	45.1	173.7	22,900	45.9	171.4	23,100	180
190	40.5	163.5	20,600	41.5	162.4	20,800	42.3	160.0	21,000	190
200	36.6	150.7	18,700	37.6	149.5	18,900				200
210	32.4	135.9	17,000	33.4	134.6	17,200				210
220	27.6	118.3	14,800 *							220
230	21.8	96.0	12,200 *							230



Liftcrane Jib Capacities

New York City Code
Jib No. 123 With 12 Ft. 6 in. Strut On
Boom No. 82LR
219,600 Lb. Crane Counterweight
80,000 Lb. Carbody Counterweight
360 Degree Rating

Meets
ANSI B30.5
Requirements



999 SERIES 3

30 Ft. JIB

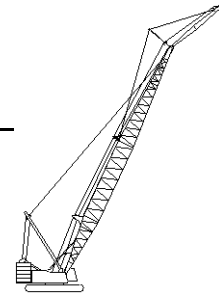
Jib Oper. Rad. Feet	0 Degree Offset			10 Degree Offset			20 Degree Offset			Jib Oper. Rad. Feet
	Boom Ang. Deg.	Jib Point Elev. Feet	Jib Capacity Pounds	Boom Ang. Deg.	Jib Point Elev. Feet	Jib Capacity Pounds	Boom Ang. Deg.	Jib Point Elev. Feet	Jib Capacity Pounds	
220 Ft. BOOM										
50	80.1	255.7	40,000 *							50
55	79.0	254.7	40,000 *	80.1	254.0	40,000*				55
60	77.8	253.6	40,000 *	79.0	252.9	40,000*	80.1	251.3	40,000*	60
65	76.7	252.4	40,000 *	77.8	251.7	40,000*	78.9	250.1	40,000*	65
70	75.5	251.2	40,000 *	76.6	250.4	40,000*	77.7	248.8	40,000*	70
75	74.3	249.8	40,000 *	75.4	249.0	40,000*	76.5	247.4	40,000*	75
80	73.1	248.3	40,000 *	74.2	247.5	40,000*	75.3	245.9	40,000*	80
85	71.9	246.6	40,000 *	73.0	245.9	40,000*	74.1	244.3	40,000*	85
90	70.7	244.9	40,000 *	71.8	244.2	40,000*	72.9	242.5	40,000*	90
100	68.3	241.1	40,000 *	69.4	240.3	40,000*	70.4	238.6	40,000*	100
110	65.8	236.7	40,000 *	66.9	236.0	40,000*	67.9	234.3	40,000*	110
120	63.2	231.9	40,000 *	64.3	231.1	40,000*	65.3	229.3	40,000*	120
130	60.7	226.5	37,600	61.7	225.7	38,100	62.7	223.9	38,500	130
140	58.0	220.4	33,600	59.1	219.6	34,000	60.0	217.7	34,400	140
150	55.3	213.7	30,200	56.3	212.9	30,500	57.3	210.9	30,900	150
160	52.4	206.3	27,200	53.5	205.4	27,500	54.4	203.4	27,800	160
170	49.5	198.0	24,600	50.5	197.1	24,900	51.4	195.0	25,100	170
180	46.4	188.9	22,200	47.4	187.9	22,500	48.2	185.7	22,700	180
190	43.1	178.6	20,200	44.1	177.6	20,400	44.9	175.3	20,600	190
200	39.6	167.1	18,300	40.6	166.0	18,500	41.4	163.5	18,700	200
210	35.9	153.9	16,700	36.8	152.7	16,800				210
220	31.7	138.7	15,000 *	32.6	137.4	15,300				220
230	27.0	120.6	12,600 *							230
240	21.4	97.9	10,200 *							240



Liftcrane Jib Capacities

New York City Code
 Jib No. 123 With 12 Ft. 6 in. Strut On
 Boom No. 82LR
 219,600 Lb. Crane Counterweight
 80,000 Lb. Carbody Counterweight
 360 Degree Rating

Meets
 ANSI B30.5
 Requirements



999 SERIES 3

30 Ft. JIB

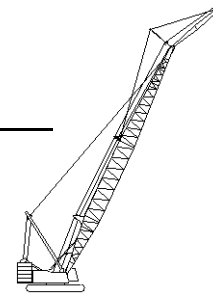
Jib Oper. Rad. Feet	0 Degree Offset			10 Degree Offset			20 Degree Offset			Jib Oper. Rad. Feet
	Boom Ang. Deg.	Jib Point Elev. Feet	Jib Capacity Pounds	Boom Ang. Deg.	Jib Point Elev. Feet	Jib Capacity Pounds	Boom Ang. Deg.	Jib Point Elev. Feet	Jib Capacity Pounds	
230 Ft. BOOM										
50	80.5	265.8	40,000 *							50
55	79.4	264.9	40,000 *	80.5	264.2	40,000*				55
60	78.3	263.9	40,000 *	79.4	263.1	40,000*	80.5	261.5	40,000*	60
65	77.2	262.7	40,000 *	78.3	262.0	40,000*	79.3	260.4	40,000*	65
70	76.0	261.5	40,000 *	77.1	260.8	40,000*	78.2	259.2	40,000*	70
75	74.9	260.2	40,000 *	76.0	259.4	40,000*	77.0	257.8	40,000*	75
80	73.8	258.7	40,000 *	74.9	258.0	40,000*	75.9	256.4	40,000*	80
85	72.6	257.2	40,000 *	73.7	256.4	40,000*	74.7	254.8	40,000*	85
90	71.5	255.5	40,000 *	72.5	254.8	40,000*	73.6	253.1	40,000*	90
100	69.1	251.8	40,000 *	70.2	251.1	40,000*	71.2	249.4	40,000*	100
110	66.8	247.7	40,000 *	67.8	246.9	40,000*	68.8	245.2	40,000*	110
120	64.4	243.1	34,600	65.4	242.3	35,400	66.4	240.5	36,000	120
130	61.9	237.9	30,100	62.9	237.1	30,800	63.9	235.3	31,300	130
140	59.4	232.2	26,300	60.4	231.4	26,800	61.3	229.5	27,400	140
150	56.8	225.8	23,000	57.8	225.0	23,500	58.7	223.1	24,000	150
160	54.1	218.8	20,100	55.1	218.0	20,600	56.0	216.0	21,000	160
170	51.3	211.1	17,600	52.3	210.2	18,000	53.2	208.2	18,400	170
180	48.4	202.5	15,400	49.4	201.6	15,800	50.3	199.5	16,100	180
190	45.4	193.0	13,400	46.4	192.1	13,800	47.2	189.8	14,000	190
200	42.2	182.5	11,700	43.2	181.4	12,000	43.9	179.0	12,200	200
210	38.8	170.6	10,100	39.8	169.5	10,300	40.5	166.9	10,500	210
220	35.1	157.1	8,600	36.1	155.9	8,800				220
230	31.1	141.5	7,300	32.0	140.1	7,500				230
240	26.5	123.0	6,100							240
250	20.9	99.7	5,000							250



Liftcrane Jib Capacities

New York City Code
 Jib No. 123 With 12 Ft. 6 in. Strut On
 Boom No. 82LR
 219,600 Lb. Crane Counterweight
 80,000 Lb. Carbody Counterweight
 360 Degree Rating

Meets
 ANSI B30.5
 Requirements



999 SERIES 3

30 Ft. JIB

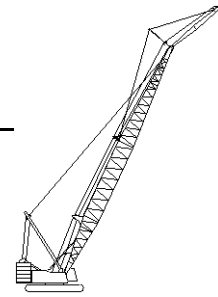
Jib Oper. Rad. Feet	0 Degree Offset			10 Degree Offset			20 Degree Offset			Jib Oper. Rad. Feet
	Boom Ang. Deg.	Jib Point Elev. Feet	Jib Capacity Pounds	Boom Ang. Deg.	Jib Point Elev. Feet	Jib Capacity Pounds	Boom Ang. Deg.	Jib Point Elev. Feet	Jib Capacity Pounds	
240 Ft. BOOM										
50	80.9	276.0	40,000 *							50
55	79.8	275.1	40,000 *	80.9	274.4	40,000*				55
60	78.7	274.1	40,000 *	79.8	273.4	40,000*	80.8	271.8	40,000*	60
65	77.7	273.0	40,000 *	78.7	272.3	40,000*	79.7	270.7	40,000*	65
70	76.6	271.8	40,000 *	77.6	271.1	40,000*	78.6	269.5	40,000*	70
75	75.5	270.5	40,000 *	76.5	269.8	40,000*	77.5	268.2	40,000*	75
80	74.4	269.1	40,000 *	75.4	268.4	40,000*	76.4	266.8	40,000*	80
85	73.3	267.7	40,000 *	74.3	266.9	40,000*	75.3	265.3	40,000*	85
90	72.2	266.1	40,000 *	73.2	265.3	40,000*	74.2	263.7	40,000*	90
100	69.9	262.5	40,000 *	71.0	261.8	40,000*	71.9	260.1	40,000*	100
110	67.7	258.6	39,400	68.7	257.8	40,000*	69.7	256.1	40,000*	110
120	65.4	254.2	33,900	66.4	253.4	34,700	67.3	251.6	35,400	120
130	63.0	249.2	29,400	64.0	248.4	30,100	64.9	246.7	30,700	130
140	60.6	243.8	25,500	61.6	243.0	26,100	62.5	241.1	26,700	140
150	58.1	237.8	22,200	59.1	236.9	22,800	60.0	235.1	23,300	150
160	55.6	231.1	19,400	56.6	230.3	19,900	57.5	228.3	20,300	160
170	53.0	223.8	16,900	54.0	222.9	17,300	54.8	221.0	17,700	170
180	50.3	215.8	14,700	51.3	214.9	15,100	52.1	212.8	15,400	180
190	47.5	206.9	12,700	48.4	206.0	13,000	49.2	203.8	13,300	190
200	44.5	197.1	10,900	45.5	196.1	11,200	46.2	193.9	11,500	200
210	41.4	186.2	9,300	42.3	185.2	9,600	43.0	182.8	9,800	210
220	38.1	174.0	7,900	39.0	172.9	8,100	39.6	170.3	8,300	220
230	34.5	160.2	6,600	35.3	158.9	6,800				230
240	30.5	144.2	5,300	31.3	142.8	5,500				240
250	26.0	125.3	4,200							250



Liftcrane Jib Capacities

New York City Code
Jib No. 123 With 12 Ft. 6 in. Strut On
Boom No. 82LR
219,600 Lb. Crane Counterweight
80,000 Lb. Carbody Counterweight
360 Degree Rating

Meets
ANSI B30.5
Requirements



999 SERIES 3

30 Ft. JIB

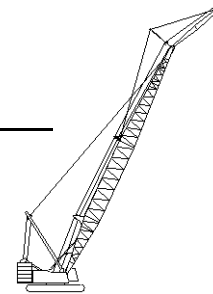
Jib Oper. Rad. Feet	0 Degree Offset			10 Degree Offset			20 Degree Offset			Jib Oper. Rad. Feet
	Boom Ang. Deg.	Jib Point Elev. Feet	Jib Capacity Pounds	Boom Ang. Deg.	Jib Point Elev. Feet	Jib Capacity Pounds	Boom Ang. Deg.	Jib Point Elev. Feet	Jib Capacity Pounds	
250 Ft. BOOM										
55	80.2	285.2	40,000 *							55
60	79.1	284.3	40,000 *	80.2	283.6	40,000*				60
65	78.1	283.2	40,000 *	79.1	282.5	40,000*	80.1	280.9	40,000*	65
70	77.1	282.1	40,000 *	78.1	281.4	40,000*	79.1	279.8	40,000*	70
75	76.0	280.9	40,000 *	77.0	280.1	40,000*	78.0	278.5	40,000*	75
80	75.0	279.5	40,000 *	76.0	278.8	40,000*	76.9	277.2	40,000*	80
85	73.9	278.1	40,000 *	74.9	277.4	40,000*	75.9	275.7	40,000*	85
90	72.8	276.6	40,000 *	73.8	275.8	40,000*	74.8	274.2	40,000*	90
100	70.7	273.2	40,000 *	71.7	272.4	40,000*	72.6	270.8	40,000*	100
110	68.5	269.4	38,800	69.5	268.6	39,700	70.4	266.9	40,000*	110
120	66.3	265.2	33,300	67.3	264.4	34,100	68.2	262.6	34,900	120
130	64.0	260.4	28,800	65.0	259.7	29,500	65.9	257.9	30,200	130
140	61.8	255.2	25,000	62.7	254.4	25,600	63.6	252.6	26,200	140
150	59.4	249.5	21,700	60.4	248.7	22,200	61.2	246.8	22,700	150
160	57.0	243.2	18,800	58.0	242.4	19,300	58.8	240.5	19,800	160
170	54.5	236.3	16,300	55.5	235.4	16,800	56.3	233.5	17,200	170
180	52.0	228.7	14,100	52.9	227.8	14,500	53.7	225.8	14,900	180
190	49.3	220.4	12,100	50.2	219.5	12,500	51.0	217.4	12,800	190
200	46.6	211.2	10,300	47.5	210.3	10,700	48.2	208.1	11,000	200
210	43.7	201.2	8,700	44.6	200.1	9,000	45.3	197.8	9,300	210
220	40.6	189.9	7,300	41.5	188.9	7,600	42.2	186.4	7,800	220
230	37.4	177.4	6,000	38.2	176.2	6,200				230
240	33.8	163.2	4,800	34.7	161.9	5,000				240



Liftcrane Jib Capacities

New York City Code
 Jib No. 123 With 12 Ft. 6 in. Strut On
 Boom No. 82LR
 219,600 Lb. Crane Counterweight
 80,000 Lb. Carbody Counterweight
 360 Degree Rating

Meets
 ANSI B30.5
 Requirements



999 SERIES 3

30 Ft. JIB

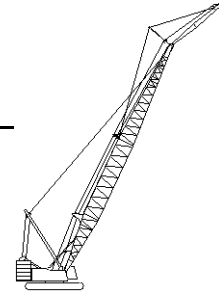
Jib Oper. Rad. Feet	0 Degree Offset			10 Degree Offset			20 Degree Offset			Jib Oper. Rad. Feet
	Boom Ang. Deg.	Jib Point Elev. Feet	Jib Capacity Pounds	Boom Ang. Deg.	Jib Point Elev. Feet	Jib Capacity Pounds	Boom Ang. Deg.	Jib Point Elev. Feet	Jib Capacity Pounds	
260 Ft. BOOM										
55	80.5	295.4	40,000 *							55
60	79.5	294.5	40,000 *	80.5	293.8	40,000*				60
65	78.5	293.5	40,000 *	79.5	292.7	40,000*	80.5	291.1	40,000*	65
70	77.5	292.4	40,000 *	78.5	291.6	40,000*	79.4	290.0	40,000*	70
75	76.5	291.2	40,000 *	77.5	290.5	40,000*	78.4	288.8	40,000*	75
80	75.5	289.9	40,000 *	76.5	289.2	40,000*	77.4	287.5	40,000*	80
85	74.5	288.5	40,000 *	75.4	287.8	40,000*	76.4	286.1	40,000*	85
90	73.4	287.0	40,000 *	74.4	286.3	40,000*	75.3	284.6	40,000*	90
100	71.4	283.8	40,000 *	72.3	283.0	40,000*	73.3	281.4	40,000*	100
110	69.3	280.1	38,200	70.2	279.4	39,100	71.1	277.7	40,000*	110
120	67.2	276.1	32,800	68.1	275.3	33,600	69.0	273.6	34,300	120
130	65.0	271.6	28,200	65.9	270.8	28,900	66.8	269.0	29,600	130
140	62.8	266.6	24,400	63.7	265.8	25,000	64.6	264.0	25,600	140
150	60.6	261.1	21,100	61.5	260.3	21,700	62.3	258.4	22,200	150
160	58.3	255.1	18,200	59.2	254.3	18,700	60.0	252.4	19,200	160
170	55.9	248.5	15,700	56.8	247.7	16,200	57.6	245.7	16,600	170
180	53.5	241.3	13,500	54.4	240.5	13,900	55.2	238.5	14,300	180
190	51.0	233.5	11,500	51.9	232.6	11,900	52.7	230.5	12,300	190
200	48.4	224.9	9,700	49.3	223.9	10,100	50.0	221.8	10,400	200
210	45.7	215.5	8,200	46.6	214.5	8,500	47.3	212.2	8,700	210
220	42.9	205.1	6,700	43.7	204.0	7,000	44.4	201.7	7,200	220
230	39.9	193.6	5,400	40.7	192.5	5,600	41.4	189.9	5,800	230
240	36.7	180.7	4,200	37.5	179.5	4,400				240



Liftcrane Jib Capacities

New York City Code
Jib No. 123 With 12 Ft. 6 in. Strut On
Boom No. 82LR
219,600 Lb. Crane Counterweight
80,000 Lb. Carbody Counterweight
360 Degree Rating

Meets
ANSI B30.5
Requirements



999 SERIES 3

30 Ft. JIB

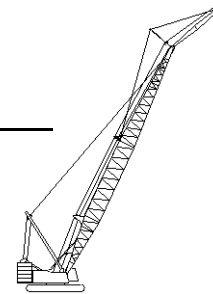
Jib Oper. Rad. Feet	0 Degree Offset			10 Degree Offset			20 Degree Offset			Jib Oper. Rad. Feet
	Boom Ang. Deg.	Jib Point Elev. Feet	Jib Capacity Pounds	Boom Ang. Deg.	Jib Point Elev. Feet	Jib Capacity Pounds	Boom Ang. Deg.	Jib Point Elev. Feet	Jib Capacity Pounds	
270 Ft. BOOM										
55	80.8	305.5	40,000 *							55
60	79.9	304.6	40,000 *	80.8	303.9	40,000*				60
65	78.9	303.7	40,000 *	79.8	303.0	40,000*	80.8	301.3	40,000*	65
70	77.9	302.6	40,000 *	78.9	301.9	40,000*	79.8	300.3	40,000*	70
75	77.0	301.5	40,000 *	77.9	300.7	40,000*	78.8	299.1	40,000*	75
80	76.0	300.2	40,000 *	76.9	299.5	40,000*	77.8	297.9	40,000*	80
85	75.0	298.9	40,000 *	75.9	298.2	40,000*	76.8	296.5	40,000*	85
90	74.0	297.5	40,000 *	74.9	296.7	40,000*	75.8	295.1	40,000*	90
100	72.0	294.4	40,000 *	72.9	293.6	40,000*	73.8	291.9	40,000*	100
110	70.0	290.8	37,600	70.9	290.1	38,600	71.8	288.4	39,500	110
120	68.0	286.9	32,200	68.9	286.2	33,000	69.7	284.4	33,800	120
130	65.9	282.6	27,600	66.8	281.8	28,400	67.7	280.0	29,100	130
140	63.8	277.8	23,800	64.7	277.0	24,500	65.5	275.2	25,100	140
150	61.6	272.6	20,500	62.5	271.7	21,100	63.4	269.9	21,700	150
160	59.4	266.8	17,600	60.3	266.0	18,200	61.2	264.1	18,700	160
170	57.2	260.6	15,100	58.1	259.7	15,600	58.9	257.8	16,100	170
180	54.9	253.7	12,900	55.8	252.9	13,400	56.6	250.9	13,800	180
190	52.5	246.3	10,900	53.4	245.4	11,400	54.2	243.4	11,700	190
200	50.1	238.2	9,200	50.9	237.2	9,500	51.7	235.1	9,900	200
210	47.5	229.3	7,600	48.4	228.3	7,900	49.1	226.2	8,200	210
220	44.9	219.6	6,100	45.7	218.6	6,400	46.4	216.3	6,700	220
230	42.1	208.9	4,800	42.9	207.9	5,100	43.6	205.4	5,300	230
240							40.6	193.4	4,000	240



Liftcrane Jib Capacities

New York City Code
 Jib No. 123 With 12 Ft. 6 in. Strut On
 Boom No. 82LR
 219,600 Lb. Crane Counterweight
 80,000 Lb. Carbody Counterweight
 360 Degree Rating

Meets
 ANSI B30.5
 Requirements



999 SERIES 3

30 Ft. JIB

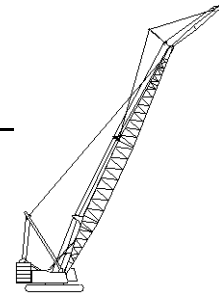
Jib Oper. Rad. Feet	0 Degree Offset			10 Degree Offset			20 Degree Offset			Jib Oper. Rad. Feet
	Boom Ang. Deg.	Jib Point Elev. Feet	Jib Capacity Pounds	Boom Ang. Deg.	Jib Point Elev. Feet	Jib Capacity Pounds	Boom Ang. Deg.	Jib Point Elev. Feet	Jib Capacity Pounds	
280 Ft. BOOM										
60	80.2	314.8	40,000 *							60
65	79.3	313.9	40,000 *	80.2	313.1	40,000*				65
70	78.3	312.9	40,000 *	79.2	312.1	40,000*	80.1	310.5	40,000*	70
75	77.4	311.7	40,000 *	78.3	311.0	40,000*	79.2	309.4	40,000*	75
80	76.4	310.5	40,000 *	77.3	309.8	40,000*	78.2	308.2	40,000*	80
85	75.5	309.3	40,000 *	76.4	308.5	40,000*	77.3	306.9	40,000*	85
90	74.5	307.9	40,000 *	75.4	307.1	40,000*	76.3	305.5	40,000*	90
100	72.6	304.9	40,000 *	73.5	304.1	40,000*	74.4	302.4	40,000*	100
110	70.7	301.5	36,900	71.6	300.7	37,900	72.4	299.0	38,900	110
120	68.7	297.7	31,500	69.6	296.9	32,300	70.4	295.2	33,200	120
130	66.7	293.5	26,900	67.6	292.8	27,700	68.4	291.0	28,500	130
140	64.7	288.9	23,000	65.6	288.1	23,800	66.4	286.4	24,400	140
150	62.6	283.9	19,700	63.5	283.1	20,400	64.3	281.3	21,000	150
160	60.5	278.4	16,900	61.4	277.6	17,500	62.2	275.7	18,000	160
170	58.4	272.4	14,400	59.2	271.6	14,900	60.0	269.7	15,400	170
180	56.2	265.9	12,100	57.0	265.1	12,600	57.8	263.1	13,100	180
190	53.9	258.8	10,200	54.8	257.9	10,600	55.5	256.0	11,000	190
200	51.6	251.1	8,400	52.5	250.2	8,800	53.2	248.2	9,200	200
210	49.2	242.8	6,800	50.0	241.8	7,200	50.7	239.7	7,500	210
220	46.7	233.6	5,400	47.5	232.6	5,700	48.2	230.4	6,000	220
230	44.1	223.7	4,000	44.9	222.6	4,400	45.6	220.3	4,600	230



Liftcrane Jib Capacities

New York City Code
 Jib No. 123 With 12 Ft. 6 in. Strut On
 Boom No. 82LR
 219,600 Lb. Crane Counterweight
 80,000 Lb. Carbody Counterweight
 360 Degree Rating

Meets
 ANSI B30.5
 Requirements



999 SERIES 3

30 Ft. JIB

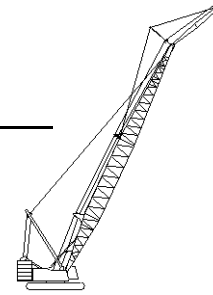
Jib Oper. Rad. Feet	0 Degree Offset			10 Degree Offset			20 Degree Offset			Jib Oper. Rad. Feet
	Boom Ang. Deg.	Jib Point Elev. Feet	Jib Capacity Pounds	Boom Ang. Deg.	Jib Point Elev. Feet	Jib Capacity Pounds	Boom Ang. Deg.	Jib Point Elev. Feet	Jib Capacity Pounds	
290 Ft. BOOM										
60	80.5	325.0	40,000 *							60
65	79.6	324.1	40,000 *	80.5	323.3	40,000*				65
70	78.7	323.1	40,000 *	79.6	322.3	40,000*	80.5	320.7	40,000*	70
75	77.8	322.0	40,000 *	78.7	321.3	40,000*	79.5	319.6	40,000*	75
80	76.9	320.8	40,000 *	77.8	320.1	40,000*	78.6	318.5	40,000*	80
85	75.9	319.6	40,000 *	76.8	318.9	40,000*	77.7	317.2	39,900*	85
90	75.0	318.3	40,000 *	75.9	317.5	40,000*	76.8	315.9	39,700*	90
100	73.2	315.4	40,000 *	74.0	314.6	40,000*	74.9	312.9	39,300*	100
110	71.3	312.1	36,300	72.2	311.3	37,400	73.0	309.6	38,300	110
120	69.4	308.4	30,900	70.3	307.7	31,800	71.1	306.0	32,600	120
130	67.5	304.4	26,300	68.3	303.6	27,100	69.1	301.9	27,900	130
140	65.5	300.0	22,400	66.4	299.2	23,200	67.2	297.4	23,900	140
150	63.6	295.2	19,100	64.4	294.4	19,800	65.2	292.6	20,500	150
160	61.5	289.9	16,300	62.4	289.1	16,900	63.2	287.2	17,500	160
170	59.5	284.1	13,800	60.3	283.3	14,300	61.1	281.4	14,800	170
180	57.4	277.9	11,500	58.2	277.1	12,100	59.0	275.1	12,500	180
190	55.2	271.2	9,600	56.1	270.3	10,000	56.8	268.3	10,500	190
200	53.0	263.8	7,800	53.8	262.9	8,200	54.5	260.9	8,600	200
210	50.7	255.9	6,200	51.6	255.0	6,600	52.2	252.9	6,900	210
220	48.4	247.3	4,800	49.2	246.3	5,100	49.9	244.1	5,400	220
230							47.4	234.6	4,000	230



Liftcrane Jib Capacities

New York City Code
 Jib No. 123 With 12 Ft. 6 in. Strut On
 Boom No. 82LR
 219,600 Lb. Crane Counterweight
 80,000 Lb. Carbody Counterweight
 360 Degree Rating

Meets
 ANSI B30.5
 Requirements



999 SERIES 3

30 Ft. JIB

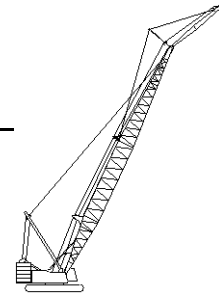
Jib Oper. Rad. Feet	0 Degree Offset			10 Degree Offset			20 Degree Offset			Jib Oper. Rad. Feet
	Boom Ang. Deg.	Jib Point Elev. Feet	Jib Capacity Pounds	Boom Ang. Deg.	Jib Point Elev. Feet	Jib Capacity Pounds	Boom Ang. Deg.	Jib Point Elev. Feet	Jib Capacity Pounds	
300 Ft. BOOM										
60	80.8	335.1	40,000 *							60
65	79.9	334.2	40,000 *	80.8	333.5	40,000*				65
70	79.0	333.3	40,000 *	79.9	332.5	40,000*	80.7	330.9	37,500*	70
75	78.2	332.2	40,000 *	79.0	331.5	40,000*	79.9	329.9	37,200*	75
80	77.3	331.1	40,000 *	78.1	330.4	40,000*	79.0	328.7	37,100*	80
85	76.4	329.9	40,000 *	77.2	329.2	40,000*	78.1	327.5	36,900*	85
90	75.5	328.6	40,000 *	76.3	327.9	40,000*	77.2	326.2	36,700*	90
100	73.7	325.8	40,000 *	74.5	325.1	40,000*	75.4	323.4	36,300*	100
110	71.9	322.6	35,700	72.7	321.9	36,800	73.5	320.2	35,900*	110
120	70.0	319.1	30,300	70.9	318.4	31,200	71.7	316.6	32,100	120
130	68.2	315.2	25,700	69.0	314.5	26,600	69.8	312.7	27,400	130
140	66.3	311.0	21,800	67.1	310.2	22,600	67.9	308.4	23,300	140
150	64.4	306.3	18,500	65.2	305.5	19,200	66.0	303.7	19,900	150
160	62.5	301.2	15,700	63.3	300.4	16,300	64.0	298.6	16,900	160
170	60.5	295.7	13,100	61.3	294.9	13,700	62.1	293.0	14,300	170
180	58.5	289.8	10,900	59.3	288.9	11,500	60.0	287.0	12,000	180
190	56.4	283.3	8,900	57.2	282.4	9,400	57.9	280.5	9,900	190
200	54.3	276.3	7,200	55.1	275.4	7,600	55.8	273.4	8,000	200
210	52.2	268.7	5,600	52.9	267.8	6,000	53.6	265.8	6,400	210
220	49.9	260.5	4,100	50.7	259.6	4,500	51.4	257.5	4,800	220



Liftcrane Jib Capacities

New York City Code
Jib No. 123 With 12 Ft. 6 in. Strut On
Boom No. 82LR
219,600 Lb. Crane Counterweight
80,000 Lb. Carbody Counterweight
360 Degree Rating

Meets
ANSI B30.5
Requirements



999 SERIES 3

40 Ft. JIB

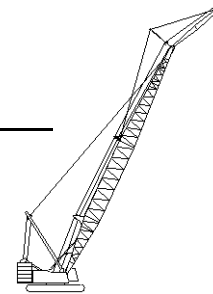
Jib Oper. Rad. Feet	0 Degree Offset			10 Degree Offset			20 Degree Offset			Jib Oper. Rad. Feet
	Boom Ang. Deg.	Jib Point Elev. Feet	Jib Capacity Pounds	Boom Ang. Deg.	Jib Point Elev. Feet	Jib Capacity Pounds	Boom Ang. Deg.	Jib Point Elev. Feet	Jib Capacity Pounds	
120 Ft. BOOM										
35	80.3	166.9	30,000 *							35
40	78.5	165.8	30,000 *	80.9	165.0	30,000*				40
45	76.7	164.7	30,000 *	79.1	163.8	30,000*				45
50	74.9	163.3	30,000 *	77.2	162.4	30,000*	79.6	160.5	30,000*	50
55	73.0	161.8	30,000 *	75.4	160.9	30,000*	77.7	158.9	30,000*	55
60	71.1	160.0	30,000 *	73.5	159.1	30,000*	75.8	157.2	30,000*	60
65	69.2	158.1	30,000 *	71.6	157.2	30,000*	73.8	155.2	30,000*	65
70	67.3	156.0	30,000 *	69.6	155.1	30,000*	71.9	153.1	30,000*	70
75	65.4	153.7	30,000 *	67.7	152.8	30,000*	69.9	150.8	30,000*	75
80	63.4	151.2	30,000 *	65.7	150.3	30,000*	67.8	148.2	30,000*	80
85	61.4	148.5	30,000 *	63.6	147.5	30,000*	65.8	145.4	29,200*	85
90	59.3	145.5	30,000 *	61.6	144.5	30,000*	63.7	142.4	28,200*	90
100	55.0	138.8	30,000 *	57.3	137.8	30,000*	59.3	135.5	26,400*	100
110	50.5	130.9	30,000 *	52.7	129.8	29,700*	54.6	127.4	24,900*	110
120	45.6	121.6	30,000 *	47.8	120.4	27,700*	49.6	117.7	23,700*	120
130	40.3	110.5	29,500 *	42.4	109.1	26,000*	44.1	106.2	22,600*	130
140	34.3	96.9	27,300 *	36.3	95.3	24,500*				140
150	27.2	79.3	25,400 *							150
130 Ft. BOOM										
35	80.9	177.0	30,000 *							35
40	79.2	176.1	30,000 *							40
45	77.5	175.0	30,000 *	79.7	174.1	30,000*				45
50	75.8	173.7	30,000 *	78.0	172.8	30,000*	80.2	170.9	30,000*	50
55	74.0	172.2	30,000 *	76.3	171.3	30,000*	78.4	169.4	30,000*	55
60	72.3	170.6	30,000 *	74.5	169.7	30,000*	76.6	167.7	30,000*	60
65	70.5	168.8	30,000 *	72.7	167.9	30,000*	74.8	165.9	30,000*	65
70	68.7	166.9	30,000 *	70.9	166.0	30,000*	73.0	163.9	30,000*	70
75	66.9	164.8	30,000 *	69.1	163.8	30,000*	71.2	161.8	30,000*	75
80	65.1	162.4	30,000 *	67.2	161.5	30,000*	69.3	159.4	30,000*	80
85	63.2	159.9	30,000 *	65.3	158.9	30,000*	67.4	156.8	30,000*	85
90	61.3	157.1	30,000 *	63.4	156.2	30,000*	65.4	154.0	29,000*	90
100	57.3	151.0	30,000 *	59.5	149.9	30,000*	61.4	147.7	27,200*	100
110	53.2	143.8	30,000 *	55.3	142.7	30,000*	57.2	140.3	25,700*	110
120	48.9	135.4	30,000 *	50.9	134.3	28,900*	52.7	131.7	24,400*	120
130	44.2	125.6	30,000 *	46.2	124.4	27,100*	47.9	121.6	23,300*	130
140	39.1	114.0	28,900 *	41.0	112.6	25,600*	42.6	109.5	22,400*	140
150	33.3	99.8	27,000 *	35.1	98.2	24,300*				150
160	26.3	81.6	25,200 *							160



Liftcrane Jib Capacities

New York City Code
Jib No. 123 With 12 Ft. 6 in. Strut On
Boom No. 82LR
219,600 Lb. Crane Counterweight
80,000 Lb. Carbody Counterweight
360 Degree Rating

Meets
ANSI B30.5
Requirements



999 SERIES 3

40 Ft. JIB

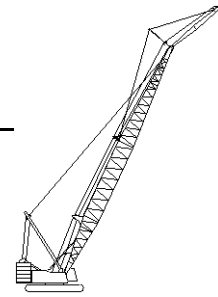
Jib Oper. Rad. Feet	0 Degree Offset			10 Degree Offset			20 Degree Offset			Jib Oper. Rad. Feet
	Boom Ang. Deg.	Jib Point Elev. Feet	Jib Capacity Pounds	Boom Ang. Deg.	Jib Point Elev. Feet	Jib Capacity Pounds	Boom Ang. Deg.	Jib Point Elev. Feet	Jib Capacity Pounds	
140 Ft. BOOM										
40	79.8	186.3	30,000 *							40
45	78.2	185.2	30,000 *	80.3	184.3	30,000*				45
50	76.6	184.0	30,000 *	78.7	183.1	30,000*	80.8	181.2	30,000*	50
55	74.9	182.7	30,000 *	77.0	181.8	30,000*	79.1	179.8	30,000*	55
60	73.3	181.2	30,000 *	75.4	180.2	30,000*	77.4	178.2	30,000*	60
65	71.6	179.5	30,000 *	73.7	178.6	30,000*	75.7	176.5	30,000*	65
70	69.9	177.6	30,000 *	72.0	176.7	30,000*	74.0	174.7	30,000*	70
75	68.2	175.6	30,000 *	70.3	174.7	30,000*	72.3	172.6	30,000*	75
80	66.5	173.5	30,000 *	68.6	172.5	30,000*	70.5	170.4	30,000*	80
85	64.8	171.1	30,000 *	66.8	170.1	30,000*	68.8	168.0	30,000*	85
90	63.0	168.6	30,000 *	65.0	167.6	30,000*	67.0	165.4	29,800*	90
100	59.4	162.8	30,000 *	61.4	161.8	30,000*	63.2	159.6	28,000*	100
110	55.6	156.2	30,000 *	57.6	155.2	30,000*	59.4	152.8	26,500*	110
120	51.6	148.6	30,000 *	53.6	147.5	30,000*	55.3	145.0	25,100*	120
130	47.4	139.8	30,000 *	49.3	138.6	28,300*	51.0	135.9	24,000*	130
140	42.9	129.5	30,000 *	44.8	128.2	26,700*	46.3	125.3	23,000*	140
150	37.9	117.4	28,500 *	39.7	115.9	25,300*	41.1	112.7	22,200*	150
160	32.3	102.6	26,700 *	34.0	101.0	24,100*				160
170	25.6	83.8	25,100 *							170
150 Ft. BOOM										
40	80.3	196.5	30,000 *							40
45	78.8	195.5	30,000 *	80.8	194.6	30,000*				45
50	77.3	194.3	30,000 *	79.3	193.4	30,000*				50
55	75.7	193.0	30,000 *	77.7	192.1	30,000*	79.7	190.1	30,000*	55
60	74.2	191.6	30,000 *	76.2	190.7	30,000*	78.1	188.7	30,000*	60
65	72.6	190.0	30,000 *	74.6	189.1	30,000*	76.5	187.1	30,000*	65
70	71.0	188.3	30,000 *	73.0	187.4	30,000*	74.9	185.3	30,000*	70
75	69.4	186.4	30,000 *	71.4	185.5	30,000*	73.3	183.4	30,000*	75
80	67.8	184.4	30,000 *	69.8	183.4	30,000*	71.6	181.3	30,000*	80
85	66.2	182.2	30,000 *	68.1	181.2	30,000*	70.0	179.1	30,000*	85
90	64.5	179.8	30,000 *	66.5	178.8	30,000*	68.3	176.6	30,000*	90
100	61.1	174.5	30,000 *	63.1	173.4	30,000*	64.8	171.2	28,700*	100
110	57.6	168.3	30,000 *	59.5	167.3	30,000*	61.3	165.0	27,200*	110
120	54.0	161.3	30,000 *	55.8	160.2	30,000*	57.5	157.8	25,800*	120
130	50.1	153.3	30,000 *	52.0	152.1	29,400*	53.6	149.5	24,600*	130
140	46.1	144.0	30,000 *	47.9	142.8	27,700*	49.4	140.0	23,600*	140
150	41.7	133.3	30,000 *	43.4	131.9	26,300*	44.9	128.9	22,700*	150
160	36.9	120.7	28,100 *	38.6	119.2	25,000*	39.8	115.8	22,000*	160
170	31.4	105.4	26,400 *	33.0	103.7	23,900*				170
180	24.9	86.0	24,900 *							180



Liftcrane Jib Capacities

New York City Code
Jib No. 123 With 12 Ft. 6 in. Strut On
Boom No. 82LR
219,600 Lb. Crane Counterweight
80,000 Lb. Carbody Counterweight
360 Degree Rating

Meets
ANSI B30.5
Requirements



999 SERIES 3

40 Ft. JIB

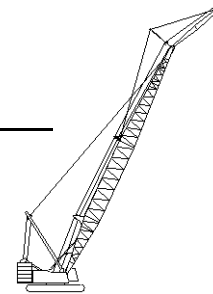
Jib Oper. Rad. Feet	0 Degree Offset			10 Degree Offset			20 Degree Offset			Jib Oper. Rad. Feet
	Boom Ang. Deg.	Jib Point Elev. Feet	Jib Capacity Pounds	Boom Ang. Deg.	Jib Point Elev. Feet	Jib Capacity Pounds	Boom Ang. Deg.	Jib Point Elev. Feet	Jib Capacity Pounds	
160 Ft. BOOM										
40	80.8	206.6	30,000 *							40
45	79.4	205.7	30,000 *							45
50	77.9	204.6	30,000 *	79.8	203.7	30,000*				50
55	76.5	203.4	30,000 *	78.4	202.5	30,000*	80.2	200.4	30,000*	55
60	75.0	202.0	30,000 *	76.9	201.1	30,000*	78.7	199.1	30,000*	60
65	73.5	200.5	30,000 *	75.4	199.6	30,000*	77.2	197.6	30,000*	65
70	72.0	198.9	30,000 *	73.9	198.0	30,000*	75.7	195.9	30,000*	70
75	70.5	197.1	30,000 *	72.4	196.2	30,000*	74.2	194.1	30,000*	75
80	69.0	195.2	30,000 *	70.9	194.2	30,000*	72.6	192.1	30,000*	80
85	67.4	193.1	30,000 *	69.3	192.1	30,000*	71.1	190.0	30,000*	85
90	65.9	190.9	30,000 *	67.7	189.9	30,000*	69.5	187.7	30,000*	90
100	62.7	185.9	30,000 *	64.5	184.9	30,000*	66.2	182.7	29,500*	100
110	59.4	180.2	30,000 *	61.2	179.1	30,000*	62.9	176.8	27,900*	110
120	56.0	173.6	30,000 *	57.8	172.6	30,000*	59.4	170.2	26,500*	120
130	52.5	166.2	30,000 *	54.3	165.1	30,000*	55.8	162.6	25,300*	130
140	48.8	157.8	30,000 *	50.5	156.6	28,700*	52.0	153.9	24,200*	140
150	44.8	148.1	30,000 *	46.5	146.8	27,200*	47.9	144.0	23,300*	150
160	40.6	136.9	29,600 *	42.2	135.5	25,900*	43.5	132.5	22,500*	160
170	35.9	123.9	27,200	37.5	122.3	24,800*				170
180	30.6	108.1	24,800	32.1	106.3	23,800*				180
190	24.2	88.1	22,100 *							190



Liftcrane Jib Capacities

New York City Code
 Jib No. 123 With 12 Ft. 6 in. Strut On
 Boom No. 82LR
 219,600 Lb. Crane Counterweight
 80,000 Lb. Carbody Counterweight
 360 Degree Rating

Meets
 ANSI B30.5
 Requirements



999 SERIES 3

40 Ft. JIB

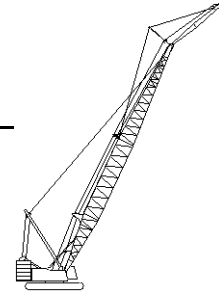
Jib Oper. Rad. Feet	0 Degree Offset			10 Degree Offset			20 Degree Offset			Jib Oper. Rad. Feet
	Boom Ang. Deg.	Jib Point Elev. Feet	Jib Capacity Pounds	Boom Ang. Deg.	Jib Point Elev. Feet	Jib Capacity Pounds	Boom Ang. Deg.	Jib Point Elev. Feet	Jib Capacity Pounds	
170 Ft. BOOM										
45	79.9	215.9	30,000*							45
50	78.5	214.8	30,000*	80.3	213.9	30,000*				50
55	77.1	213.7	30,000*	78.9	212.8	30,000*	80.7	210.7	30,000*	55
60	75.7	212.4	30,000*	77.5	211.5	30,000*	79.3	209.4	30,000*	60
65	74.3	211.0	30,000*	76.1	210.0	30,000*	77.9	208.0	30,000*	65
70	72.9	209.4	30,000*	74.7	208.5	30,000*	76.4	206.4	30,000*	70
75	71.5	207.8	30,000*	73.3	206.8	30,000*	75.0	204.7	30,000*	75
80	70.0	205.9	30,000*	71.8	205.0	30,000*	73.5	202.9	30,000*	80
85	68.6	204.0	30,000*	70.3	203.0	30,000*	72.0	200.9	30,000*	85
90	67.1	201.9	30,000*	68.9	200.9	30,000*	70.5	198.7	30,000*	90
100	64.1	197.1	30,000*	65.9	196.1	30,000*	67.5	193.9	30,000*	100
110	61.0	191.8	30,000*	62.8	190.7	30,000*	64.4	188.5	28,500*	110
120	57.9	185.7	30,000*	59.6	184.6	30,000*	61.1	182.2	27,100*	120
130	54.6	178.8	30,000*	56.3	177.7	30,000*	57.8	175.2	25,900*	130
140	51.1	171.0	30,000*	52.8	169.8	29,700*	54.3	167.2	24,800*	140
150	47.5	162.2	30,000*	49.2	160.9	28,200*	50.6	158.2	23,900*	150
160	43.7	152.1	29,500	45.3	150.8	26,800*	46.6	147.8	23,000*	160
170	39.5	140.5	26,800	41.1	139.1	25,600*	42.3	135.9	22,300*	170
180	35.0	127.0	24,500	36.5	125.4	24,600*				180
190	29.8	110.7	22,400	31.2	108.8	22,600				190
200	23.6	90.1	19,600*							200



Liftcrane Jib Capacities

New York City Code
 Jib No. 123 With 12 Ft. 6 in. Strut On
 Boom No. 82LR
 219,600 Lb. Crane Counterweight
 80,000 Lb. Carbody Counterweight
 360 Degree Rating

Meets
 ANSI B30.5
 Requirements



999 SERIES 3

40 Ft. JIB

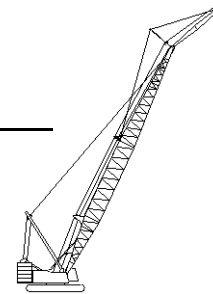
Jib Oper. Rad. Feet	0 Degree Offset			10 Degree Offset			20 Degree Offset			Jib Oper. Rad. Feet
	Boom Ang. Deg.	Jib Point Elev. Feet	Jib Capacity Pounds	Boom Ang. Deg.	Jib Point Elev. Feet	Jib Capacity Pounds	Boom Ang. Deg.	Jib Point Elev. Feet	Jib Capacity Pounds	
180 Ft. BOOM										
45	80.4	226.0	30,000 *							45
50	79.0	225.1	30,000 *	80.8	224.1	30,000*				50
55	77.7	224.0	30,000 *	79.4	223.0	30,000*				55
60	76.4	222.7	30,000 *	78.1	221.8	30,000*	79.8	219.7	30,000*	60
65	75.0	221.4	30,000 *	76.8	220.4	30,000*	78.4	218.4	30,000*	65
70	73.7	219.9	30,000 *	75.4	219.0	30,000*	77.1	216.9	30,000*	70
75	72.3	218.3	30,000 *	74.0	217.4	30,000*	75.7	215.3	30,000*	75
80	71.0	216.6	30,000 *	72.7	215.6	30,000*	74.3	213.5	30,000*	80
85	69.6	214.7	30,000 *	71.3	213.7	30,000*	72.9	211.6	30,000*	85
90	68.2	212.7	30,000 *	69.9	211.7	30,000*	71.5	209.6	30,000*	90
100	65.4	208.3	30,000 *	67.0	207.3	30,000*	68.6	205.1	30,000*	100
110	62.5	203.2	30,000 *	64.1	202.2	30,000*	65.7	199.9	29,200*	110
120	59.5	197.5	30,000 *	61.1	196.4	30,000*	62.6	194.1	27,700*	120
130	56.4	191.0	30,000 *	58.0	189.9	30,000*	59.5	187.5	26,500*	130
140	53.2	183.8	30,000 *	54.8	182.6	30,000*	56.2	180.1	25,400*	140
150	49.9	175.6	30,000 *	51.5	174.4	29,100*	52.8	171.8	24,400*	150
160	46.4	166.4	29,100	47.9	165.1	27,700*	49.2	162.3	23,600*	160
170	42.6	156.0	26,500	44.1	154.6	26,500*	45.4	151.6	22,800*	170
180	38.6	144.0	24,200	40.1	142.5	24,400	41.2	139.2	22,200*	180
190	34.1	130.0	22,100	35.6	128.3	22,300				190
200	29.1	113.3	20,200	30.4	111.3	20,400				200
210	23.0	92.1	17,200 *							210



Liftcrane Jib Capacities

New York City Code
 Jib No. 123 With 12 Ft. 6 in. Strut On
 Boom No. 82LR
 219,600 Lb. Crane Counterweight
 80,000 Lb. Carbody Counterweight
 360 Degree Rating

Meets
 ANSI B30.5
 Requirements



999 SERIES 3

40 Ft. JIB

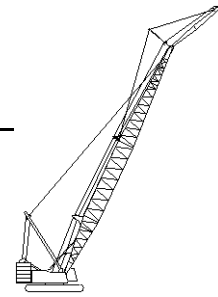
Jib Oper. Rad. Feet	0 Degree Offset			10 Degree Offset			20 Degree Offset			Jib Oper. Rad. Feet
	Boom Ang. Deg.	Jib Point Elev. Feet	Jib Capacity Pounds	Boom Ang. Deg.	Jib Point Elev. Feet	Jib Capacity Pounds	Boom Ang. Deg.	Jib Point Elev. Feet	Jib Capacity Pounds	
190 Ft. BOOM										
45	80.8	236.2	30,000 *							45
50	79.5	235.3	30,000 *							50
55	78.3	234.2	30,000 *	79.9	233.3	30,000*				55
60	77.0	233.1	30,000 *	78.6	232.1	30,000*	80.3	230.0	30,000*	60
65	75.7	231.8	30,000 *	77.4	230.8	30,000*	79.0	228.7	30,000*	65
70	74.4	230.4	30,000 *	76.1	229.4	30,000*	77.7	227.3	30,000*	70
75	73.1	228.8	30,000 *	74.8	227.9	30,000*	76.3	225.8	30,000*	75
80	71.8	227.2	30,000 *	73.5	226.2	30,000*	75.0	224.1	30,000*	80
85	70.5	225.4	30,000 *	72.1	224.4	30,000*	73.7	222.3	30,000*	85
90	69.2	223.5	30,000 *	70.8	222.5	30,000*	72.3	220.4	30,000*	90
100	66.5	219.3	30,000 *	68.1	218.3	30,000*	69.6	216.1	30,000*	100
110	63.8	214.5	30,000 *	65.4	213.5	30,000*	66.8	211.2	29,800*	110
120	60.9	209.1	30,000 *	62.5	208.0	30,000*	64.0	205.7	28,300*	120
130	58.0	203.0	30,000 *	59.6	201.9	30,000*	61.0	199.5	27,100*	130
140	55.1	196.2	30,000 *	56.6	195.1	30,000*	58.0	192.6	26,000*	140
150	51.9	188.6	30,000 *	53.5	187.5	30,000*	54.8	184.9	25,000*	150
160	48.7	180.1	28,800	50.2	178.9	28,600*	51.5	176.2	24,100*	160
170	45.3	170.6	26,100	46.8	169.2	26,500	48.0	166.4	23,300*	170
180	41.6	159.7	23,800	43.1	158.3	24,100	44.2	155.2	22,600*	180
190	37.7	147.4	21,700	39.1	145.8	22,000	40.1	142.4	22,000*	190
200	33.3	133.0	19,900	34.7	131.2	20,100				200
210	28.4	115.8	18,100 *	29.7	113.8	18,300				210
220	22.5	94.1	15,300 *							220



Liftcrane Jib Capacities

New York City Code
Jib No. 123 With 12 Ft. 6 in. Strut On
Boom No. 82LR
219,600 Lb. Crane Counterweight
80,000 Lb. Carbody Counterweight
360 Degree Rating

Meets
ANSI B30.5
Requirements



999 SERIES 3

40 Ft. JIB

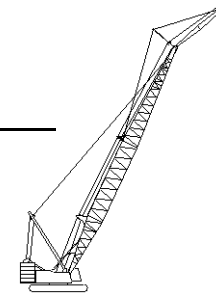
Jib Oper. Rad. Feet	0 Degree Offset			10 Degree Offset			20 Degree Offset			Jib Oper. Rad. Feet
	Boom Ang. Deg.	Jib Point Elev. Feet	Jib Capacity Pounds	Boom Ang. Deg.	Jib Point Elev. Feet	Jib Capacity Pounds	Boom Ang. Deg.	Jib Point Elev. Feet	Jib Capacity Pounds	
200 Ft. BOOM										
50	80.0	245.4	30,000 *							50
55	78.7	244.4	30,000 *	80.3	243.5	30,000*				55
60	77.5	243.3	30,000 *	79.1	242.4	30,000*	80.7	240.3	30,000*	60
65	76.3	242.1	30,000 *	77.9	241.1	30,000*	79.4	239.1	30,000*	65
70	75.1	240.8	30,000 *	76.7	239.8	30,000*	78.2	237.7	30,000*	70
75	73.8	239.3	30,000 *	75.4	238.3	30,000*	76.9	236.2	30,000*	75
80	72.6	237.7	30,000 *	74.2	236.8	30,000*	75.7	234.6	30,000*	80
85	71.4	236.0	30,000 *	72.9	235.1	30,000*	74.4	232.9	30,000*	85
90	70.1	234.2	30,000 *	71.6	233.2	30,000*	73.1	231.1	30,000*	90
100	67.5	230.2	30,000 *	69.1	229.2	30,000*	70.5	227.0	30,000*	100
110	64.9	225.7	30,000 *	66.5	224.6	30,000*	67.9	222.4	30,000*	110
120	62.3	220.5	30,000 *	63.8	219.5	30,000*	65.2	217.2	28,900*	120
130	59.5	214.8	30,000 *	61.0	213.7	30,000*	62.4	211.3	27,600*	130
140	56.7	208.4	30,000 *	58.2	207.3	30,000*	59.5	204.8	26,500*	140
150	53.8	201.3	30,000 *	55.3	200.1	30,000*	56.6	197.6	25,500*	150
160	50.8	193.4	28,200	52.2	192.2	28,600	53.5	189.5	24,600*	160
170	47.6	184.5	25,600	49.0	183.3	25,900	50.2	180.5	23,800*	170
180	44.3	174.6	23,300	45.7	173.3	23,600	46.8	170.3	23,100*	180
190	40.7	163.4	21,200	42.1	162.0	21,500	43.2	158.8	21,700	190
200	36.9	150.7	19,300	38.2	149.1	19,600				200
210	32.6	135.9	17,700	33.9	134.1	17,900				210
220	27.8	118.2	15,600 *							220
230	22.0	96.0	13,000 *							230



Liftcrane Jib Capacities

New York City Code
Jib No. 123 With 12 Ft. 6 in. Strut On
Boom No. 82LR
219,600 Lb. Crane Counterweight
80,000 Lb. Carbody Counterweight
360 Degree Rating

Meets
ANSI B30.5
Requirements



999 SERIES 3

40 Ft. JIB

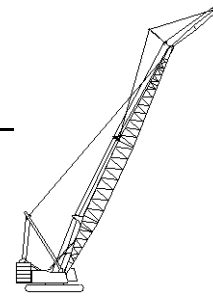
Jib Oper. Rad. Feet	0 Degree Offset			10 Degree Offset			20 Degree Offset			Jib Oper. Rad. Feet
	Boom Ang. Deg.	Jib Point Elev. Feet	Jib Capacity Pounds	Boom Ang. Deg.	Jib Point Elev. Feet	Jib Capacity Pounds	Boom Ang. Deg.	Jib Point Elev. Feet	Jib Capacity Pounds	
210 Ft. BOOM										
50	80.4	255.6	30,000 *							50
55	79.2	254.7	30,000 *	80.7	253.7	30,000*				55
60	78.0	253.6	30,000 *	79.6	252.6	30,000*				60
65	76.9	252.4	30,000 *	78.4	251.4	30,000*	79.9	249.3	30,000*	65
70	75.7	251.1	30,000 *	77.2	250.2	30,000*	78.7	248.0	30,000*	70
75	74.5	249.7	30,000 *	76.0	248.8	30,000*	77.5	246.6	30,000*	75
80	73.3	248.2	30,000 *	74.8	247.3	30,000*	76.3	245.1	30,000*	80
85	72.1	246.6	30,000 *	73.6	245.6	30,000*	75.1	243.5	30,000*	85
90	70.9	244.9	30,000 *	72.4	243.9	30,000*	73.8	241.7	30,000*	90
100	68.5	241.0	30,000 *	70.0	240.0	30,000*	71.4	237.8	30,000*	100
110	66.0	236.7	30,000 *	67.5	235.7	30,000*	68.9	233.4	30,000*	110
120	63.5	231.8	30,000 *	64.9	230.8	30,000*	66.3	228.5	29,500*	120
130	60.9	226.4	30,000 *	62.3	225.3	30,000*	63.6	223.0	28,200*	130
140	58.2	220.4	30,000 *	59.6	219.3	30,000*	60.9	216.8	27,100*	140
150	55.5	213.7	30,000 *	56.9	212.5	30,000*	58.2	210.0	26,000*	150
160	52.6	206.2	27,800	54.0	205.0	28,300	55.3	202.4	25,100*	160
170	49.7	198.0	25,200	51.1	196.7	25,600	52.2	194.0	24,300*	170
180	46.6	188.8	22,900	47.9	187.5	23,200	49.1	184.6	23,500	180
190	43.3	178.6	20,800	44.7	177.2	21,100	45.7	174.1	21,300	190
200	39.8	167.0	19,000	41.1	165.5	19,200	42.2	162.3	19,400	200
210	36.1	153.9	17,300	37.4	152.3	17,500				210
220	31.9	138.7	15,800	33.2	136.9	15,900				220
230	27.2	120.6	13,400 *							230
240	21.6	97.8	11,000 *							240



Liftcrane Jib Capacities

New York City Code
Jib No. 123 With 12 Ft. 6 in. Strut On
Boom No. 82LR
219,600 Lb. Crane Counterweight
80,000 Lb. Carbody Counterweight
360 Degree Rating

Meets
ANSI B30.5
Requirements



999 SERIES 3

40 Ft. JIB

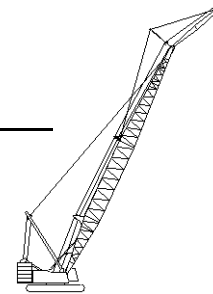
Jib Oper. Rad. Feet	0 Degree Offset			10 Degree Offset			20 Degree Offset			Jib Oper. Rad. Feet
	Boom Ang. Deg.	Jib Point Elev. Feet	Jib Capacity Pounds	Boom Ang. Deg.	Jib Point Elev. Feet	Jib Capacity Pounds	Boom Ang. Deg.	Jib Point Elev. Feet	Jib Capacity Pounds	
220 Ft. BOOM										
50	80.7	265.8	30,000 *							50
55	79.6	264.9	30,000 *							55
60	78.5	263.8	30,000 *	80.0	262.9	30,000*				60
65	77.4	262.7	30,000 *	78.8	261.7	30,000*	80.3	259.6	30,000*	65
70	76.3	261.5	30,000 *	77.7	260.5	30,000*	79.1	258.4	30,000*	70
75	75.1	260.1	30,000 *	76.6	259.2	30,000*	78.0	257.0	30,000*	75
80	74.0	258.7	30,000 *	75.4	257.7	30,000*	76.8	255.6	30,000*	80
85	72.8	257.1	30,000 *	74.3	256.1	30,000*	75.7	254.0	30,000*	85
90	71.7	255.5	30,000 *	73.1	254.5	30,000*	74.5	252.3	30,000*	90
100	69.3	251.8	30,000 *	70.8	250.8	30,000*	72.1	248.6	30,000*	100
110	67.0	247.7	30,000 *	68.4	246.6	30,000*	69.7	244.4	30,000*	110
120	64.6	243.0	30,000 *	66.0	242.0	30,000*	67.3	239.7	30,000*	120
130	62.1	237.9	30,000 *	63.5	236.8	30,000*	64.8	234.4	28,700*	130
140	59.6	232.1	27,200	61.0	231.0	27,900	62.2	228.6	27,600*	140
150	57.0	225.8	23,900	58.3	224.7	24,500	59.6	222.2	25,100	150
160	54.3	218.8	21,000	55.7	217.6	21,600	56.9	215.1	22,100	160
170	51.5	211.1	18,500	52.9	209.8	19,000	54.0	207.2	19,500	170
180	48.6	202.5	16,300	50.0	201.2	16,700	51.1	198.4	17,100	180
190	45.6	193.0	14,300	46.9	191.7	14,700	48.0	188.7	15,000	190
200	42.4	182.4	12,500	43.7	181.0	12,900	44.7	177.9	13,200	200
210	39.0	170.5	10,900	40.3	169.0	11,200	41.2	165.7	11,500	210
220	35.3	157.0	9,500	36.6	155.4	9,700				220
230	31.3	141.5	8,100	32.4	139.6	8,300				230
240	26.7	122.9	6,900							240
250	21.1	99.6	5,800							250



Liftcrane Jib Capacities

New York City Code
 Jib No. 123 With 12 Ft. 6 in. Strut On
 Boom No. 82LR
 219,600 Lb. Crane Counterweight
 80,000 Lb. Carbody Counterweight
 360 Degree Rating

Meets
 ANSI B30.5
 Requirements



999 SERIES 3

40 Ft. JIB

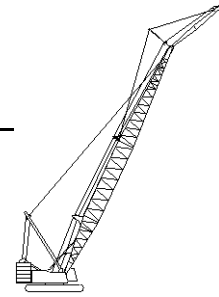
Jib Oper. Rad. Feet	0 Degree Offset			10 Degree Offset			20 Degree Offset			Jib Oper. Rad. Feet
	Boom Ang. Deg.	Jib Point Elev. Feet	Jib Capacity Pounds	Boom Ang. Deg.	Jib Point Elev. Feet	Jib Capacity Pounds	Boom Ang. Deg.	Jib Point Elev. Feet	Jib Capacity Pounds	
230 Ft. BOOM										
55	80.0	275.0	30,000 *							55
60	78.9	274.0	30,000 *	80.3	273.1	30,000*				60
65	77.9	273.0	30,000 *	79.3	272.0	30,000*	80.6	269.9	30,000*	65
70	76.8	271.8	30,000 *	78.2	270.8	30,000*	79.5	268.7	30,000*	70
75	75.7	270.5	30,000 *	77.1	269.5	30,000*	78.4	267.4	30,000*	75
80	74.6	269.1	30,000 *	76.0	268.1	30,000*	77.3	266.0	30,000*	80
85	73.5	267.6	30,000 *	74.9	266.6	30,000*	76.2	264.5	30,000*	85
90	72.4	266.0	30,000 *	73.8	265.0	30,000*	75.1	262.8	30,000*	90
100	70.1	262.5	30,000 *	71.5	261.5	30,000*	72.8	259.3	30,000*	100
110	67.9	258.6	30,000 *	69.2	257.5	30,000*	70.5	255.3	30,000*	110
120	65.6	254.1	30,000 *	66.9	253.1	30,000*	68.2	250.8	30,000*	120
130	63.2	249.2	30,000 *	64.6	248.1	30,000*	65.8	245.8	29,200*	130
140	60.8	243.7	26,600	62.1	242.6	27,400	63.4	240.2	28,100*	140
150	58.3	237.7	23,300	59.7	236.6	24,000	60.9	234.1	24,600	150
160	55.8	231.1	20,400	57.1	229.9	21,000	58.3	227.4	21,600	160
170	53.2	223.8	17,900	54.5	222.6	18,500	55.6	220.0	19,000	170
180	50.5	215.8	15,700	51.8	214.5	16,200	52.9	211.8	16,600	180
190	47.7	206.9	13,700	48.9	205.6	14,200	50.0	202.7	14,600	190
200	44.7	197.1	12,000	46.0	195.7	12,400	47.0	192.7	12,700	200
210	41.6	186.2	10,400	42.8	184.7	10,700	43.8	181.6	11,000	210
220	38.3	174.0	8,900	39.5	172.4	9,200	40.4	169.0	9,400	220
230	34.7	160.1	7,600	35.8	158.4	7,800				230
240	30.7	144.2	6,400	31.8	142.3	6,600				240
250	26.2	125.2	5,200							250
260	20.7	101.4	4,200							260



Liftcrane Jib Capacities

New York City Code
Jib No. 123 With 12 Ft. 6 in. Strut On
Boom No. 82LR
219,600 Lb. Crane Counterweight
80,000 Lb. Carbody Counterweight
360 Degree Rating

Meets
ANSI B30.5
Requirements



999 SERIES 3

40 Ft. JIB

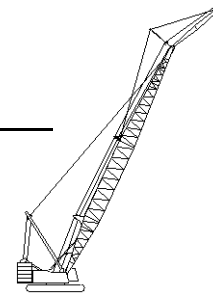
Jib Oper. Rad. Feet	0 Degree Offset			10 Degree Offset			20 Degree Offset			Jib Oper. Rad. Feet
	Boom Ang. Deg.	Jib Point Elev. Feet	Jib Capacity Pounds	Boom Ang. Deg.	Jib Point Elev. Feet	Jib Capacity Pounds	Boom Ang. Deg.	Jib Point Elev. Feet	Jib Capacity Pounds	
240 Ft. BOOM										
55	80.4	285.2	30,000 *							55
60	79.3	284.3	30,000 *	80.7	283.3	30,000*				60
65	78.3	283.2	30,000 *	79.7	282.2	30,000*	81.0	280.1	30,000*	65
70	77.2	282.1	30,000 *	78.6	281.1	30,000*	79.9	278.9	30,000*	70
75	76.2	280.8	30,000 *	77.6	279.8	30,000*	78.9	277.7	30,000*	75
80	75.1	279.5	30,000 *	76.5	278.5	30,000*	77.8	276.3	30,000*	80
85	74.1	278.1	30,000 *	75.4	277.1	30,000*	76.7	274.9	30,000*	85
90	73.0	276.5	30,000 *	74.4	275.5	30,000*	75.7	273.3	30,000*	90
100	70.9	273.2	30,000 *	72.2	272.1	30,000*	73.5	269.9	30,000*	100
110	68.7	269.4	30,000 *	70.0	268.3	30,000*	71.3	266.1	30,000*	110
120	66.5	265.1	30,000 *	67.8	264.1	30,000*	69.0	261.8	30,000*	120
130	64.2	260.4	29,700	65.5	259.3	30,000*	66.8	257.0	29,700*	130
140	61.9	255.2	25,900	63.2	254.1	26,700	64.4	251.7	27,400	140
150	59.6	249.5	22,600	60.9	248.3	23,300	62.1	245.9	23,900	150
160	57.2	243.2	19,700	58.5	242.0	20,300	59.6	239.5	20,900	160
170	54.7	236.3	17,200	56.0	235.1	17,800	57.1	232.5	18,300	170
180	52.2	228.7	15,000	53.4	227.4	15,500	54.5	224.8	16,000	180
190	49.5	220.4	13,000	50.8	219.1	13,500	51.8	216.3	13,900	190
200	46.8	211.2	11,200	48.0	209.9	11,600	49.0	207.0	12,000	200
210	43.9	201.1	9,600	45.1	199.7	10,000	46.0	196.6	10,300	210
220	40.8	189.9	8,200	42.0	188.4	8,500	42.9	185.1	8,800	220
230	37.5	177.4	6,800	38.7	175.8	7,100	39.5	172.2	7,300	230
240	34.0	163.2	5,600	35.1	161.4	5,900				240
250	30.1	146.8	4,500	31.2	144.9	4,700				250



Liftcrane Jib Capacities

New York City Code
 Jib No. 123 With 12 Ft. 6 in. Strut On
 Boom No. 82LR
 219,600 Lb. Crane Counterweight
 80,000 Lb. Carbody Counterweight
 360 Degree Rating

Meets
 ANSI B30.5
 Requirements



999 SERIES 3

40 Ft. JIB

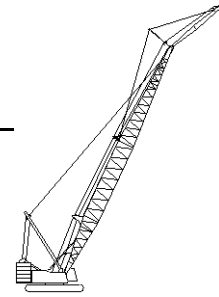
Jib Oper. Rad. Feet	0 Degree Offset			10 Degree Offset			20 Degree Offset			Jib Oper. Rad. Feet
	Boom Ang. Deg.	Jib Point Elev. Feet	Jib Capacity Pounds	Boom Ang. Deg.	Jib Point Elev. Feet	Jib Capacity Pounds	Boom Ang. Deg.	Jib Point Elev. Feet	Jib Capacity Pounds	
250 Ft. BOOM										
55	80.7	295.4	30,000 *							55
60	79.7	294.4	30,000 *	81.0	293.5	30,000*				60
65	78.7	293.4	30,000 *	80.0	292.4	30,000*				65
70	77.7	292.3	30,000 *	79.0	291.3	30,000*	80.3	289.2	30,000*	70
75	76.7	291.1	30,000 *	78.0	290.2	30,000*	79.3	288.0	30,000*	75
80	75.7	289.9	30,000 *	77.0	288.9	30,000*	78.2	286.7	30,000*	80
85	74.6	288.5	30,000 *	76.0	287.5	30,000*	77.2	285.3	30,000*	85
90	73.6	287.0	30,000 *	74.9	286.0	30,000*	76.2	283.8	30,000*	90
100	71.6	283.8	30,000 *	72.9	282.7	30,000*	74.1	280.5	30,000*	100
110	69.5	280.1	30,000 *	70.8	279.1	30,000*	72.0	276.8	30,000*	110
120	67.3	276.0	30,000 *	68.6	275.0	30,000*	69.8	272.7	30,000*	120
130	65.2	271.5	29,100	66.5	270.4	30,000*	67.6	268.1	30,000*	130
140	63.0	266.5	25,300	64.2	265.4	26,100	65.4	263.1	26,900	140
150	60.7	261.1	22,000	62.0	259.9	22,700	63.1	257.5	23,400	150
160	58.5	255.1	19,100	59.7	253.9	19,800	60.8	251.4	20,400	160
170	56.1	248.5	16,600	57.3	247.3	17,200	58.4	244.8	17,800	170
180	53.7	241.3	14,400	54.9	240.1	14,900	56.0	237.5	15,400	180
190	51.2	233.5	12,400	52.4	232.2	12,900	53.4	229.5	13,400	190
200	48.6	224.9	10,600	49.8	223.6	11,100	50.8	220.7	11,500	200
210	45.9	215.4	9,000	47.1	214.1	9,400	48.0	211.1	9,800	210
220	43.1	205.0	7,600	44.2	203.6	7,900	45.1	200.5	8,200	220
230	40.1	193.5	6,200	41.2	192.0	6,600	42.0	188.7	6,800	230
240	36.9	180.7	5,000	38.0	179.0	5,300				240
250				34.5	164.4	4,200				250



Liftcrane Jib Capacities

New York City Code
Jib No. 123 With 12 Ft. 6 in. Strut On
Boom No. 82LR
219,600 Lb. Crane Counterweight
80,000 Lb. Carbody Counterweight
360 Degree Rating

Meets
ANSI B30.5
Requirements



999 SERIES 3

40 Ft. JIB

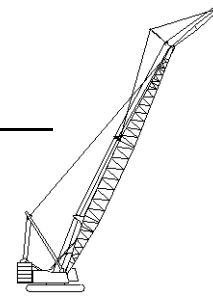
Jib Oper. Rad. Feet	0 Degree Offset			10 Degree Offset			20 Degree Offset			Jib Oper. Rad. Feet
	Boom Ang. Deg.	Jib Point Elev. Feet	Jib Capacity Pounds	Boom Ang. Deg.	Jib Point Elev. Feet	Jib Capacity Pounds	Boom Ang. Deg.	Jib Point Elev. Feet	Jib Capacity Pounds	
260 Ft. BOOM										
55	81.0	305.5	30,000 *							55
60	80.0	304.6	30,000 *							60
65	79.1	303.6	30,000 *	80.4	302.7	30,000*				65
70	78.1	302.6	30,000 *	79.4	301.6	30,000*	80.6	299.4	30,000*	70
75	77.1	301.4	30,000 *	78.4	300.4	30,000*	79.6	298.3	30,000*	75
80	76.2	300.2	30,000 *	77.4	299.2	30,000*	78.6	297.0	30,000*	80
85	75.2	298.9	30,000 *	76.4	297.9	30,000*	77.6	295.7	30,000*	85
90	74.2	297.4	30,000 *	75.4	296.4	30,000*	76.7	294.2	30,000*	90
100	72.2	294.3	30,000 *	73.4	293.3	30,000*	74.6	291.1	30,000*	100
110	70.2	290.8	30,000 *	71.4	289.8	30,000*	72.6	287.5	30,000*	110
120	68.1	286.9	30,000 *	69.4	285.8	30,000*	70.5	283.6	30,000*	120
130	66.1	282.5	28,600	67.3	281.5	29,500	68.4	279.2	30,000*	130
140	64.0	277.8	24,700	65.2	276.7	25,600	66.3	274.3	26,400	140
150	61.8	272.5	21,400	63.0	271.4	22,200	64.1	269.0	22,900	150
160	59.6	266.8	18,500	60.8	265.7	19,200	61.9	263.2	19,900	160
170	57.4	260.5	16,000	58.6	259.4	16,700	59.6	256.8	17,300	170
180	55.1	253.7	13,800	56.3	252.5	14,400	57.3	249.9	14,900	180
190	52.7	246.2	11,800	53.9	245.0	12,300	54.9	242.3	12,800	190
200	50.3	238.1	10,000	51.4	236.9	10,500	52.4	234.1	10,900	200
210	47.7	229.3	8,400	48.9	227.9	8,900	49.8	225.1	9,300	210
220	45.1	219.6	7,000	46.2	218.2	7,400	47.1	215.1	7,700	220
230	42.3	208.9	5,700	43.4	207.4	6,000	44.3	204.2	6,300	230
240	39.4	197.1	4,400	40.4	195.5	4,800	41.3	192.1	5,000	240



Liftcrane Jib Capacities

New York City Code
 Jib No. 123 With 12 Ft. 6 in. Strut On
 Boom No. 82LR
 219,600 Lb. Crane Counterweight
 80,000 Lb. Carbody Counterweight
 360 Degree Rating

Meets
 ANSI B30.5
 Requirements



999 SERIES 3

40 Ft. JIB

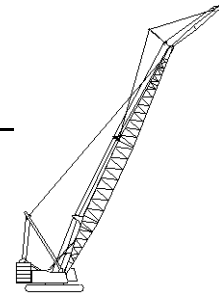
Jib Oper. Rad. Feet	0 Degree Offset			10 Degree Offset			20 Degree Offset			Jib Oper. Rad. Feet
	Boom Ang. Deg.	Jib Point Elev. Feet	Jib Capacity Pounds	Boom Ang. Deg.	Jib Point Elev. Feet	Jib Capacity Pounds	Boom Ang. Deg.	Jib Point Elev. Feet	Jib Capacity Pounds	
270 Ft. BOOM										
60	80.4	314.8	30,000 *							60
65	79.4	313.8	30,000 *	80.7	312.8	30,000*				65
70	78.5	312.8	30,000 *	79.7	311.8	30,000*	80.9	309.7	30,000*	70
75	77.6	311.7	30,000 *	78.8	310.7	30,000*	80.0	308.5	30,000*	75
80	76.6	310.5	30,000 *	77.8	309.5	30,000*	79.0	307.3	30,000*	80
85	75.7	309.2	30,000 *	76.9	308.2	30,000*	78.1	306.0	30,000*	85
90	74.7	307.9	30,000 *	75.9	306.8	30,000*	77.1	304.6	30,000*	90
100	72.8	304.8	30,000 *	74.0	303.8	30,000*	75.2	301.6	30,000*	100
110	70.8	301.4	30,000 *	72.0	300.4	30,000*	73.2	298.2	30,000*	110
120	68.9	297.7	30,000 *	70.1	296.6	30,000*	71.2	294.3	30,000*	120
130	66.9	293.5	28,000	68.1	292.4	29,000	69.2	290.1	29,900	130
140	64.9	288.9	24,100	66.0	287.8	25,000	67.1	285.5	25,900	140
150	62.8	283.9	20,800	64.0	282.8	21,600	65.1	280.4	22,400	150
160	60.7	278.4	17,900	61.9	277.3	18,700	62.9	274.8	19,400	160
170	58.6	272.4	15,400	59.7	271.2	16,100	60.8	268.7	16,700	170
180	56.4	265.9	13,200	57.5	264.7	13,800	58.5	262.1	14,400	180
190	54.1	258.8	11,200	55.2	257.6	11,800	56.2	254.9	12,300	190
200	51.8	251.1	9,400	52.9	249.8	10,000	53.9	247.1	10,400	200
210	49.4	242.7	7,800	50.5	241.4	8,300	51.4	238.6	8,700	210
220	46.9	233.6	6,400	48.0	232.2	6,800	48.9	229.3	7,200	220
230	44.3	223.6	5,100	45.4	222.2	5,500	46.3	219.1	5,800	230
240				42.6	211.2	4,200	43.5	207.9	4,500	240



Liftcrane Jib Capacities

New York City Code
 Jib No. 123 With 12 Ft. 6 in. Strut On
 Boom No. 82LR
 219,600 Lb. Crane Counterweight
 80,000 Lb. Carbody Counterweight
 360 Degree Rating

Meets
 ANSI B30.5
 Requirements



999 SERIES 3

40 Ft. JIB

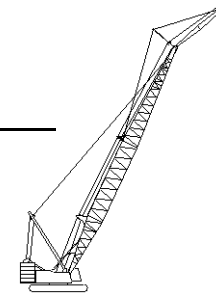
Jib Oper. Rad. Feet	0 Degree Offset			10 Degree Offset			20 Degree Offset			Jib Oper. Rad. Feet
	Boom Ang. Deg.	Jib Point Elev. Feet	Jib Capacity Pounds	Boom Ang. Deg.	Jib Point Elev. Feet	Jib Capacity Pounds	Boom Ang. Deg.	Jib Point Elev. Feet	Jib Capacity Pounds	
280 Ft. BOOM										
60	80.7	324.9	30,000 *							60
65	79.8	324.0	30,000 *	81.0	323.0	30,000*				65
70	78.9	323.0	30,000 *	80.1	322.0	30,000*				70
75	77.9	322.0	30,000 *	79.1	321.0	30,000*	80.3	318.8	30,000*	75
80	77.0	320.8	30,000 *	78.2	319.8	30,000*	79.4	317.6	30,000*	80
85	76.1	319.6	30,000 *	77.3	318.6	30,000*	78.4	316.4	30,000*	85
90	75.2	318.2	30,000 *	76.4	317.2	30,000*	77.5	315.0	30,000*	90
100	73.3	315.3	30,000 *	74.5	314.3	30,000*	75.6	312.1	30,000*	100
110	71.5	312.0	30,000 *	72.6	311.0	30,000*	73.7	308.8	30,000*	110
120	69.6	308.4	30,000 *	70.7	307.4	30,000*	71.8	305.1	30,000*	120
130	67.6	304.4	27,300	68.8	303.3	28,300	69.9	301.0	29,300	130
140	65.7	300.0	23,400	66.8	298.9	24,400	67.9	296.5	25,200	140
150	63.7	295.1	20,100	64.9	294.0	20,900	65.9	291.6	21,800	150
160	61.7	289.8	17,200	62.8	288.7	18,000	63.9	286.3	18,700	160
170	59.6	284.1	14,700	60.8	283.0	15,400	61.8	280.5	16,100	170
180	57.5	277.9	12,400	58.7	276.7	13,100	59.7	274.2	13,700	180
190	55.4	271.1	10,500	56.5	269.9	11,100	57.5	267.3	11,600	190
200	53.2	263.8	8,700	54.3	262.6	9,200	55.2	259.9	9,700	200
210	50.9	255.8	7,100	52.0	254.6	7,600	52.9	251.8	8,000	210
220	48.6	247.2	5,600	49.6	245.9	6,100	50.5	243.0	6,500	220
230	46.1	237.8	4,300	47.2	236.5	4,700	48.0	233.5	5,100	230



Liftcrane Jib Capacities

New York City Code
 Jib No. 123 With 12 Ft. 6 in. Strut On
 Boom No. 82LR
 219,600 Lb. Crane Counterweight
 80,000 Lb. Carbody Counterweight
 360 Degree Rating

Meets
 ANSI B30.5
 Requirements



999 SERIES 3

40 Ft. JIB

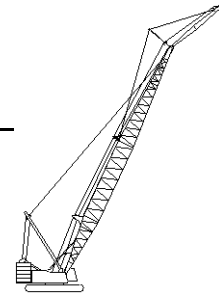
Jib Oper. Rad. Feet	0 Degree Offset			10 Degree Offset			20 Degree Offset			Jib Oper. Rad. Feet
	Boom Ang. Deg.	Jib Point Elev. Feet	Jib Capacity Pounds	Boom Ang. Deg.	Jib Point Elev. Feet	Jib Capacity Pounds	Boom Ang. Deg.	Jib Point Elev. Feet	Jib Capacity Pounds	
290 Ft. BOOM										
60	81.0	335.1	30,000 *							60
65	80.1	334.2	30,000 *							65
70	79.2	333.2	30,000 *	80.4	332.2	30,000*				70
75	78.3	332.2	30,000 *	79.5	331.2	30,000*	80.6	329.0	30,000*	75
80	77.4	331.1	30,000 *	78.6	330.1	30,000*	79.7	327.9	30,000*	80
85	76.5	329.9	30,000 *	77.7	328.9	30,000*	78.8	326.7	30,000*	85
90	75.7	328.6	30,000 *	76.8	327.6	30,000*	77.9	325.4	30,000*	90
100	73.9	325.8	30,000 *	75.0	324.7	30,000*	76.1	322.5	30,000*	100
110	72.0	322.6	30,000 *	73.2	321.6	30,000*	74.3	319.3	30,000*	110
120	70.2	319.1	30,000 *	71.3	318.0	30,000*	72.4	315.8	30,000*	120
130	68.4	315.2	26,700	69.5	314.1	27,800	70.5	311.8	28,800	130
140	66.5	310.9	22,800	67.6	309.9	23,800	68.6	307.5	24,700	140
150	64.6	306.3	19,500	65.7	305.2	20,400	66.7	302.8	21,200	150
160	62.6	301.2	16,600	63.7	300.1	17,400	64.7	297.7	18,200	160
170	60.7	295.7	14,100	61.8	294.6	14,800	62.7	292.1	15,500	170
180	58.6	289.7	11,800	59.7	288.6	12,500	60.7	286.0	13,200	180
190	56.6	283.3	9,900	57.7	282.1	10,500	58.6	279.5	11,100	190
200	54.5	276.3	8,100	55.5	275.0	8,700	56.5	272.4	9,200	200
210	52.3	268.7	6,500	53.4	267.4	7,000	54.3	264.7	7,500	210
220	50.1	260.5	5,000	51.1	259.2	5,500	52.0	256.4	5,900	220
230				48.8	250.3	4,200	49.7	247.4	4,500	230



Liftcrane Jib Capacities

New York City Code
Jib No. 123 With 12 Ft. 6 in. Strut On
Boom No. 82LR
219,600 Lb. Crane Counterweight
80,000 Lb. Carbody Counterweight
360 Degree Rating

Meets
ANSI B30.5
Requirements



999 SERIES 3

40 Ft. JIB

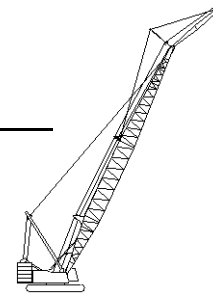
Jib Oper. Rad. Feet	0 Degree Offset			10 Degree Offset			20 Degree Offset			Jib Oper. Rad. Feet
	Boom Ang. Deg.	Jib Point Elev. Feet	Jib Capacity Pounds	Boom Ang. Deg.	Jib Point Elev. Feet	Jib Capacity Pounds	Boom Ang. Deg.	Jib Point Elev. Feet	Jib Capacity Pounds	
300 Ft. BOOM										
65	80.4	344.4	30,000 *							65
70	79.5	343.4	30,000 *	80.6	342.4	30,000*				70
75	78.7	342.4	30,000 *	79.8	341.4	30,000*	80.9	339.2	30,000*	75
80	77.8	341.3	30,000 *	78.9	340.3	30,000*	80.0	338.1	30,000*	80
85	76.9	340.2	30,000 *	78.1	339.2	30,000*	79.1	337.0	30,000*	85
90	76.1	338.9	30,000 *	77.2	337.9	30,000*	78.3	335.7	30,000*	90
100	74.3	336.2	30,000 *	75.5	335.2	30,000*	76.5	332.9	30,000*	100
110	72.6	333.1	30,000 *	73.7	332.1	30,000*	74.7	329.8	30,000*	110
120	70.8	329.7	30,000 *	71.9	328.7	30,000*	73.0	326.4	30,000*	120
130	69.0	326.0	26,100	70.1	324.9	27,200	71.1	322.6	28,300	130
140	67.2	321.9	22,200	68.3	320.8	23,200	69.3	318.5	24,200	140
150	65.4	317.4	18,900	66.4	316.3	19,800	67.4	313.9	20,700	150
160	63.5	312.5	16,000	64.6	311.4	16,800	65.6	309.0	17,600	160
170	61.6	307.2	13,500	62.7	306.0	14,200	63.6	303.6	15,000	170
180	59.7	301.4	11,200	60.7	300.3	12,000	61.7	297.8	12,600	180
190	57.7	295.2	9,200	58.7	294.1	9,900	59.7	291.5	10,500	190
200	55.7	288.5	7,500	56.7	287.3	8,100	57.6	284.7	8,600	200
210	53.6	281.3	5,900	54.6	280.1	6,400	55.5	277.4	6,900	210
220	51.5	273.5	4,400	52.5	272.2	4,900	53.4	269.5	5,400	220
230							51.1	260.9	4,000	230



Liftcrane Jib Capacities

New York City Code
Jib No. 123 With 12 Ft. 6 in. Strut On
Boom No. 82LR
219,600 Lb. Crane Counterweight
80,000 Lb. Carbody Counterweight
360 Degree Rating

Meets
ANSI B30.5
Requirements



999 SERIES 3

50 Ft. JIB

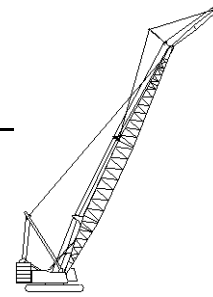
Jib Oper. Rad. Feet	0 Degree Offset			10 Degree Offset			20 Degree Offset			Jib Oper. Rad. Feet
	Boom Ang. Deg.	Jib Point Elev. Feet	Jib Capacity Pounds	Boom Ang. Deg.	Jib Point Elev. Feet	Jib Capacity Pounds	Boom Ang. Deg.	Jib Point Elev. Feet	Jib Capacity Pounds	
120 Ft. BOOM										
40	79.6	176.3	20,000*							40
45	77.9	175.2	20,000*	80.7	174.2	20,000*				45
50	76.2	173.9	20,000*	79.0	173.0	20,000*				50
55	74.4	172.5	20,000*	77.2	171.6	20,000*	80.0	169.4	20,000*	55
60	72.7	170.9	20,000*	75.5	170.0	20,000*	78.2	167.8	20,000*	60
65	70.9	169.2	20,000*	73.7	168.2	20,000*	76.4	166.0	20,000*	65
70	69.1	167.3	20,000*	71.9	166.3	20,000*	74.6	164.0	20,000*	70
75	67.3	165.2	20,000*	70.1	164.2	20,000*	72.7	161.9	20,000*	75
80	65.5	162.9	20,000*	68.2	161.8	20,000*	70.9	159.5	20,000*	80
85	63.6	160.4	20,000*	66.3	159.3	20,000*	68.9	157.0	20,000*	85
90	61.7	157.7	20,000*	64.4	156.6	20,000*	67.0	154.2	20,000*	90
100	57.8	151.6	20,000*	60.5	150.5	20,000*	63.0	148.0	20,000*	100
110	53.7	144.5	20,000*	56.4	143.3	20,000*	58.8	140.7	20,000*	110
120	49.4	136.3	20,000*	52.0	135.0	20,000*	54.3	132.2	19,700*	120
130	44.7	126.6	20,000*	47.3	125.3	20,000*	49.5	122.2	18,700*	130
140	39.6	115.2	20,000*	42.2	113.7	20,000*	44.2	110.2	17,800*	140
150	33.9	101.3	20,000*	36.3	99.5	19,400*				150
160	27.1	83.6	20,000*	29.4	81.4	18,500*				160
130 Ft. BOOM										
40	80.2	186.5	20,000*							40
45	78.6	185.4	20,000*							45
50	76.9	184.3	20,000*	79.6	183.3	20,000*				50
55	75.3	182.9	20,000*	78.0	182.0	20,000*	80.6	179.7	20,000*	55
60	73.7	181.5	20,000*	76.3	180.5	20,000*	78.9	178.2	20,000*	60
65	72.0	179.8	20,000*	74.6	178.8	20,000*	77.2	176.5	20,000*	65
70	70.3	178.0	20,000*	72.9	177.0	20,000*	75.5	174.7	20,000*	70
75	68.6	176.0	20,000*	71.2	175.0	20,000*	73.8	172.7	20,000*	75
80	66.9	173.9	20,000*	69.5	172.9	20,000*	72.0	170.5	20,000*	80
85	65.2	171.6	20,000*	67.8	170.5	20,000*	70.2	168.1	20,000*	85
90	63.4	169.1	20,000*	66.0	168.0	20,000*	68.4	165.6	20,000*	90
100	59.8	163.4	20,000*	62.3	162.3	20,000*	64.7	159.8	20,000*	100
110	56.0	156.9	20,000*	58.5	155.7	20,000*	60.9	153.1	20,000*	110
120	52.1	149.4	20,000*	54.6	148.2	20,000*	56.8	145.4	20,000*	120
130	47.9	140.7	20,000*	50.3	139.4	20,000*	52.5	136.4	19,300*	130
140	43.4	130.5	20,000*	45.8	129.1	20,000*	47.8	125.9	18,400*	140
150	38.5	118.6	20,000*	40.8	117.0	20,000*	42.7	113.4	17,600*	150
160	32.9	104.2	20,000*	35.2	102.4	19,200*				160
170	26.3	85.8	20,000*							170



Liftcrane Jib Capacities

New York City Code
 Jib No. 123 With 12 Ft. 6 in. Strut On
 Boom No. 82LR
 219,600 Lb. Crane Counterweight
 80,000 Lb. Carbody Counterweight
 360 Degree Rating

Meets
 ANSI B30.5
 Requirements



999 SERIES 3

50 Ft. JIB

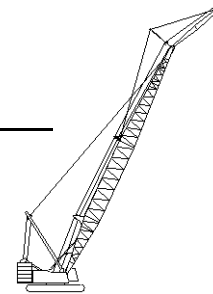
Jib Oper. Rad. Feet	0 Degree Offset			10 Degree Offset			20 Degree Offset			Jib Oper. Rad. Feet
	Boom Ang. Deg.	Jib Point Elev. Feet	Jib Capacity Pounds	Boom Ang. Deg.	Jib Point Elev. Feet	Jib Capacity Pounds	Boom Ang. Deg.	Jib Point Elev. Feet	Jib Capacity Pounds	
140 Ft. BOOM										
40	80.7	196.6	20,000 *							40
45	79.2	195.7	20,000 *							45
50	77.6	194.6	20,000 *	80.2	193.6	20,000*				50
55	76.1	193.3	20,000 *	78.6	192.3	20,000*				55
60	74.5	191.9	20,000 *	77.1	190.9	20,000*	79.5	188.6	20,000*	60
65	73.0	190.4	20,000 *	75.5	189.3	20,000*	77.9	187.0	20,000*	65
70	71.4	188.7	20,000 *	73.9	187.6	20,000*	76.3	185.3	20,000*	70
75	69.8	186.8	20,000 *	72.3	185.8	20,000*	74.7	183.4	20,000*	75
80	68.2	184.8	20,000 *	70.7	183.7	20,000*	73.0	181.4	20,000*	80
85	66.6	182.6	20,000 *	69.0	181.5	20,000*	71.4	179.1	20,000*	85
90	64.9	180.3	20,000 *	67.4	179.2	20,000*	69.7	176.7	20,000*	90
100	61.5	175.0	20,000 *	64.0	173.9	20,000*	66.2	171.4	20,000*	100
110	58.0	168.9	20,000 *	60.4	167.8	20,000*	62.7	165.2	20,000*	110
120	54.4	162.0	20,000 *	56.8	160.8	20,000*	58.9	158.1	20,000*	120
130	50.6	154.1	20,000 *	52.9	152.8	20,000*	55.0	149.9	19,900*	130
140	46.5	144.9	20,000 *	48.8	143.6	20,000*	50.8	140.5	18,900*	140
150	42.2	134.4	20,000 *	44.4	132.9	20,000*	46.3	129.5	18,100*	150
160	37.4	121.9	20,000 *	39.6	120.3	20,000*	41.3	116.6	17,500*	160
170	32.0	107.0	20,000 *	34.1	105.1	19,100*				170
180	25.6	88.0	19,900 *							180



Liftcrane Jib Capacities

New York City Code
 Jib No. 123 With 12 Ft. 6 in. Strut On
 Boom No. 82LR
 219,600 Lb. Crane Counterweight
 80,000 Lb. Carbody Counterweight
 360 Degree Rating

Meets
 ANSI B30.5
 Requirements



999 SERIES 3

50 Ft. JIB

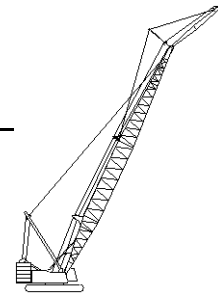
Jib Oper. Rad. Feet	0 Degree Offset			10 Degree Offset			20 Degree Offset			Jib Oper. Rad. Feet
	Boom Ang. Deg.	Jib Point Elev. Feet	Jib Capacity Pounds	Boom Ang. Deg.	Jib Point Elev. Feet	Jib Capacity Pounds	Boom Ang. Deg.	Jib Point Elev. Feet	Jib Capacity Pounds	
150 Ft. BOOM										
45	79.7	205.9	20,000*							45
50	78.3	204.8	20,000*	80.7	203.8	20,000*				50
55	76.8	203.6	20,000*	79.2	202.6	20,000*				55
60	75.3	202.3	20,000*	77.7	201.3	20,000*	80.1	199.0	20,000*	60
65	73.8	200.8	20,000*	76.2	199.8	20,000*	78.6	197.5	20,000*	65
70	72.4	199.2	20,000*	74.7	198.2	20,000*	77.0	195.9	20,000*	70
75	70.8	197.5	20,000*	73.2	196.4	20,000*	75.5	194.1	20,000*	75
80	69.3	195.6	20,000*	71.7	194.5	20,000*	74.0	192.1	20,000*	80
85	67.8	193.5	20,000*	70.1	192.5	20,000*	72.4	190.0	20,000*	85
90	66.2	191.3	20,000*	68.6	190.2	20,000*	70.8	187.8	20,000*	90
100	63.1	186.4	20,000*	65.4	185.3	20,000*	67.6	182.8	20,000*	100
110	59.8	180.7	20,000*	62.1	179.6	20,000*	64.2	177.0	20,000*	110
120	56.4	174.3	20,000*	58.7	173.1	20,000*	60.8	170.4	20,000*	120
130	52.9	167.0	20,000*	55.1	165.7	20,000*	57.2	162.9	20,000*	130
140	49.2	158.6	20,000*	51.4	157.3	20,000*	53.4	154.3	19,500*	140
150	45.3	149.1	20,000*	47.4	147.7	20,000*	49.3	144.5	18,700*	150
160	41.0	138.1	20,000*	43.2	136.5	20,000*	44.9	133.0	17,900*	160
170	36.4	125.2	20,000*	38.5	123.5	19,800*	40.1	119.6	17,300*	170
180	31.2	109.7	20,000*	33.1	107.7	18,900*				180
190	24.9	90.2	19,700*							190



Liftcrane Jib Capacities

New York City Code
Jib No. 123 With 12 Ft. 6 in. Strut On
Boom No. 82LR
219,600 Lb. Crane Counterweight
80,000 Lb. Carbody Counterweight
360 Degree Rating

Meets
ANSI B30.5
Requirements



999 SERIES 3

50 Ft. JIB

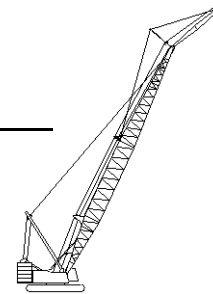
Jib Oper. Rad. Feet	0 Degree Offset			10 Degree Offset			20 Degree Offset			Jib Oper. Rad. Feet
	Boom Ang. Deg.	Jib Point Elev. Feet	Jib Capacity Pounds	Boom Ang. Deg.	Jib Point Elev. Feet	Jib Capacity Pounds	Boom Ang. Deg.	Jib Point Elev. Feet	Jib Capacity Pounds	
160 Ft. BOOM										
45	80.2	216.1	20,000 *							45
50	78.8	215.0	20,000 *							50
55	77.4	213.9	20,000 *	79.7	212.9	20,000*				55
60	76.0	212.7	20,000 *	78.3	211.6	20,000*	80.6	209.3	20,000*	60
65	74.6	211.3	20,000 *	76.9	210.2	20,000*	79.1	207.9	20,000*	65
70	73.2	209.8	20,000 *	75.5	208.7	20,000*	77.7	206.3	20,000*	70
75	71.8	208.1	20,000 *	74.0	207.0	20,000*	76.2	204.6	20,000*	75
80	70.4	206.3	20,000 *	72.6	205.2	20,000*	74.8	202.8	20,000*	80
85	68.9	204.4	20,000 *	71.1	203.3	20,000*	73.3	200.8	20,000*	85
90	67.4	202.3	20,000 *	69.7	201.2	20,000*	71.8	198.7	20,000*	90
100	64.4	197.6	20,000 *	66.7	196.5	20,000*	68.8	194.0	20,000*	100
110	61.4	192.3	20,000 *	63.6	191.2	20,000*	65.6	188.6	20,000*	110
120	58.2	186.3	20,000 *	60.4	185.1	20,000*	62.4	182.4	20,000*	120
130	54.9	179.5	20,000 *	57.1	178.2	20,000*	59.0	175.4	20,000*	130
140	51.5	171.8	20,000 *	53.6	170.5	20,000*	55.5	167.5	20,000*	140
150	47.9	163.0	20,000 *	50.0	161.7	20,000*	51.8	158.6	19,200*	150
160	44.1	153.1	20,000 *	46.2	151.6	20,000*	47.9	148.3	18,400*	160
170	40.0	141.7	20,000 *	42.0	140.1	20,000*	43.6	136.5	17,800*	170
180	35.5	128.3	20,000 *	37.4	126.6	19,600*				180
190	30.4	112.4	20,000 *	32.2	110.3	18,800*				190
200	24.3	92.3	19,700 *							200



Liftcrane Jib Capacities

New York City Code
 Jib No. 123 With 12 Ft. 6 in. Strut On
 Boom No. 82LR
 219,600 Lb. Crane Counterweight
 80,000 Lb. Carbody Counterweight
 360 Degree Rating

Meets
 ANSI B30.5
 Requirements



999 SERIES 3

50 Ft. JIB

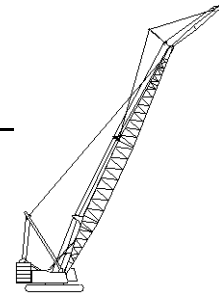
Jib Oper. Rad. Feet	0 Degree Offset			10 Degree Offset			20 Degree Offset			Jib Oper. Rad. Feet
	Boom Ang. Deg.	Jib Point Elev. Feet	Jib Capacity Pounds	Boom Ang. Deg.	Jib Point Elev. Feet	Jib Capacity Pounds	Boom Ang. Deg.	Jib Point Elev. Feet	Jib Capacity Pounds	
170 Ft. BOOM										
45	80.7	226.2	20,000 *							45
50	79.3	225.3	20,000 *							50
55	78.0	224.2	20,000 *	80.2	223.1	20,000*				55
60	76.7	223.0	20,000 *	78.9	221.9	20,000*	81.0	219.6	20,000*	60
65	75.3	221.7	20,000 *	77.5	220.6	20,000*	79.6	218.2	20,000*	65
70	74.0	220.2	20,000 *	76.2	219.2	20,000*	78.3	216.8	20,000*	70
75	72.6	218.6	20,000 *	74.8	217.6	20,000*	76.9	215.2	20,000*	75
80	71.3	216.9	20,000 *	73.4	215.9	20,000*	75.5	213.4	20,000*	80
85	69.9	215.1	20,000 *	72.0	214.0	20,000*	74.1	211.6	20,000*	85
90	68.5	213.1	20,000 *	70.6	212.0	20,000*	72.7	209.5	20,000*	90
100	65.7	208.7	20,000 *	67.8	207.6	20,000*	69.8	205.1	20,000*	100
110	62.8	203.7	20,000 *	64.9	202.6	20,000*	66.9	200.0	20,000*	110
120	59.8	198.1	20,000 *	61.9	196.9	20,000*	63.8	194.2	20,000*	120
130	56.7	191.7	20,000 *	58.8	190.5	20,000*	60.7	187.7	20,000*	130
140	53.6	184.5	20,000 *	55.6	183.2	20,000*	57.4	180.3	20,000*	140
150	50.2	176.4	20,000 *	52.3	175.1	20,000*	54.0	172.1	19,600*	150
160	46.7	167.3	20,000 *	48.7	165.9	20,000*	50.4	162.7	18,900*	160
170	43.0	157.0	20,000 *	45.0	155.5	20,000*	46.6	152.0	18,200*	170
180	39.0	145.2	20,000 *	40.9	143.5	20,000*	42.4	139.8	17,600*	180
190	34.6	131.4	20,000 *	36.5	129.6	19,400*				190
200	29.6	115.0	20,000 *	31.4	112.9	18,700*				200
210	23.7	94.3	18,200 *							210



Liftcrane Jib Capacities

New York City Code
 Jib No. 123 With 12 Ft. 6 in. Strut On
 Boom No. 82LR
 219,600 Lb. Crane Counterweight
 80,000 Lb. Carbody Counterweight
 360 Degree Rating

Meets
 ANSI B30.5
 Requirements



999 SERIES 3

50 Ft. JIB

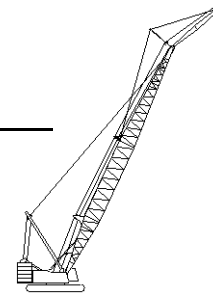
Jib Oper. Rad. Feet	0 Degree Offset			10 Degree Offset			20 Degree Offset			Jib Oper. Rad. Feet
	Boom Ang. Deg.	Jib Point Elev. Feet	Jib Capacity Pounds	Boom Ang. Deg.	Jib Point Elev. Feet	Jib Capacity Pounds	Boom Ang. Deg.	Jib Point Elev. Feet	Jib Capacity Pounds	
180 Ft. BOOM										
50	79.8	235.5	20,000 *							50
55	78.5	234.4	20,000 *	80.6	233.4	20,000*				55
60	77.3	233.3	20,000 *	79.4	232.2	20,000*				60
65	76.0	232.0	20,000 *	78.1	231.0	20,000*	80.1	228.6	20,000*	65
70	74.7	230.6	20,000 *	76.8	229.6	20,000*	78.8	227.2	20,000*	70
75	73.4	229.1	20,000 *	75.5	228.1	20,000*	77.5	225.6	20,000*	75
80	72.1	227.5	20,000 *	74.2	226.4	20,000*	76.2	224.0	20,000*	80
85	70.8	225.8	20,000 *	72.9	224.7	20,000*	74.8	222.2	20,000*	85
90	69.5	223.9	20,000 *	71.5	222.8	20,000*	73.5	220.3	20,000*	90
100	66.8	219.7	20,000 *	68.8	218.6	20,000*	70.8	216.1	20,000*	100
110	64.1	215.0	20,000 *	66.1	213.8	20,000*	68.0	211.2	20,000*	110
120	61.3	209.6	20,000 *	63.3	208.5	20,000*	65.1	205.8	20,000*	120
130	58.4	203.6	20,000 *	60.4	202.4	20,000*	62.2	199.7	20,000*	130
140	55.4	196.9	20,000 *	57.4	195.7	20,000*	59.1	192.8	20,000*	140
150	52.3	189.4	20,000 *	54.2	188.1	20,000*	56.0	185.1	20,000*	150
160	49.1	181.0	20,000 *	51.0	179.6	20,000*	52.6	176.5	19,300*	160
170	45.7	171.5	20,000 *	47.5	170.1	20,000*	49.1	166.7	18,600*	170
180	42.0	160.8	20,000 *	43.9	159.3	20,000*	45.4	155.7	18,000*	180
190	38.1	148.6	20,000 *	39.9	146.9	20,000*	41.3	143.0	17,500*	190
200	33.8	134.4	20,000 *	35.6	132.5	19,300*				200
210	29.0	117.5	18,800	30.6	115.3	18,600*				210
220	23.2	96.3	16,000 *							220



Liftcrane Jib Capacities

New York City Code
 Jib No. 123 With 12 Ft. 6 in. Strut On
 Boom No. 82LR
 219,600 Lb. Crane Counterweight
 80,000 Lb. Carbody Counterweight
 360 Degree Rating

Meets
 ANSI B30.5
 Requirements



999 SERIES 3

50 Ft. JIB

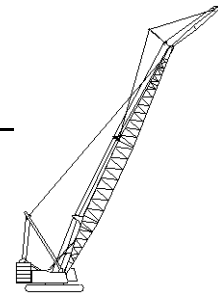
Jib Oper. Rad. Feet	0 Degree Offset			10 Degree Offset			20 Degree Offset			Jib Oper. Rad. Feet
	Boom Ang. Deg.	Jib Point Elev. Feet	Jib Capacity Pounds	Boom Ang. Deg.	Jib Point Elev. Feet	Jib Capacity Pounds	Boom Ang. Deg.	Jib Point Elev. Feet	Jib Capacity Pounds	
190 Ft. BOOM										
50	80.2	245.6	20,000 *							50
55	79.0	244.6	20,000 *	81.0	243.6	20,000*				55
60	77.8	243.6	20,000 *	79.8	242.5	20,000*				60
65	76.6	242.4	20,000 *	78.6	241.3	20,000*	80.5	238.9	20,000*	65
70	75.4	241.0	20,000 *	77.3	240.0	20,000*	79.3	237.5	20,000*	70
75	74.1	239.6	20,000 *	76.1	238.5	20,000*	78.0	236.1	20,000*	75
80	72.9	238.0	20,000 *	74.9	237.0	20,000*	76.8	234.5	20,000*	80
85	71.6	236.4	20,000 *	73.6	235.3	20,000*	75.5	232.8	20,000*	85
90	70.4	234.6	20,000 *	72.3	233.5	20,000*	74.2	231.0	20,000*	90
100	67.8	230.6	20,000 *	69.8	229.5	20,000*	71.6	226.9	20,000*	100
110	65.2	226.1	20,000 *	67.2	225.0	20,000*	69.0	222.4	20,000*	110
120	62.6	221.0	20,000 *	64.5	219.9	20,000*	66.3	217.2	20,000*	120
130	59.8	215.4	20,000 *	61.7	214.2	20,000*	63.5	211.4	20,000*	130
140	57.0	209.1	20,000 *	58.9	207.8	20,000*	60.6	205.0	20,000*	140
150	54.1	202.0	20,000 *	56.0	200.7	20,000*	57.7	197.8	20,000*	150
160	51.1	194.2	20,000 *	53.0	192.8	20,000*	54.6	189.8	19,800*	160
170	48.0	185.4	20,000 *	49.8	184.0	20,000*	51.4	180.8	19,100*	170
180	44.6	175.6	20,000 *	46.4	174.1	20,000*	47.9	170.7	18,400*	180
190	41.1	164.5	20,000 *	42.9	162.9	20,000*	44.3	159.3	17,800*	190
200	37.3	151.9	20,000 *	39.0	150.2	19,900*	40.3	146.2	17,400*	200
210	33.1	137.3	18,400	34.7	135.4	18,700				210
220	28.3	120.0	16,700 *	29.9	117.7	17,100				220
230	22.7	98.3	14,100 *							230



Liftcrane Jib Capacities

New York City Code
Jib No. 123 With 12 Ft. 6 in. Strut On
Boom No. 82LR
219,600 Lb. Crane Counterweight
80,000 Lb. Carbody Counterweight
360 Degree Rating

Meets
ANSI B30.5
Requirements



999 SERIES 3

50 Ft. JIB

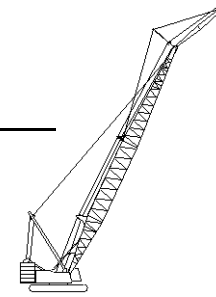
Jib Oper. Rad. Feet	0 Degree Offset			10 Degree Offset			20 Degree Offset			Jib Oper. Rad. Feet
	Boom Ang. Deg.	Jib Point Elev. Feet	Jib Capacity Pounds	Boom Ang. Deg.	Jib Point Elev. Feet	Jib Capacity Pounds	Boom Ang. Deg.	Jib Point Elev. Feet	Jib Capacity Pounds	
200 Ft. BOOM										
50	80.6	255.8	20,000 *							50
55	79.5	254.9	20,000 *							55
60	78.3	253.8	20,000 *	80.2	252.7	20,000*				60
65	77.1	252.7	20,000 *	79.0	251.6	20,000*	80.9	249.1	20,000*	65
70	76.0	251.4	20,000 *	77.9	250.3	20,000*	79.7	247.9	20,000*	70
75	74.8	250.0	20,000 *	76.7	248.9	20,000*	78.5	246.5	20,000*	75
80	73.6	248.5	20,000 *	75.5	247.4	20,000*	77.3	245.0	20,000*	80
85	72.4	246.9	20,000 *	74.3	245.8	20,000*	76.1	243.3	20,000*	85
90	71.2	245.2	20,000 *	73.1	244.1	20,000*	74.9	241.6	20,000*	90
100	68.8	241.4	20,000 *	70.6	240.3	20,000*	72.4	237.8	20,000*	100
110	66.3	237.1	20,000 *	68.1	236.0	20,000*	69.9	233.4	20,000*	110
120	63.7	232.3	20,000 *	65.6	231.2	20,000*	67.3	228.5	20,000*	120
130	61.2	227.0	20,000 *	63.0	225.7	20,000*	64.7	223.0	20,000*	130
140	58.5	221.0	20,000 *	60.3	219.7	20,000*	62.0	216.9	20,000*	140
150	55.8	214.3	20,000 *	57.6	213.1	20,000*	59.2	210.2	20,000*	150
160	52.9	207.0	20,000 *	54.7	205.6	20,000*	56.3	202.6	20,000*	160
170	50.0	198.8	20,000 *	51.8	197.4	20,000*	53.3	194.3	19,500*	170
180	46.9	189.7	20,000 *	48.7	188.3	20,000*	50.1	185.0	18,800*	180
190	43.7	179.6	20,000 *	45.4	178.0	20,000*	46.8	174.5	18,200*	190
200	40.2	168.2	19,600	41.9	166.5	19,900	43.2	162.7	17,700*	200
210	36.5	155.2	17,900	38.1	153.4	18,200	39.4	149.3	17,300*	210
220	32.4	140.2	16,400	34.0	138.2	16,600				220
230	27.7	122.4	14,400 *	29.2	120.1	14,900*				230
240	22.2	100.2	12,000 *							240



Liftcrane Jib Capacities

New York City Code
Jib No. 123 With 12 Ft. 6 in. Strut On
Boom No. 82LR
219,600 Lb. Crane Counterweight
80,000 Lb. Carbody Counterweight
360 Degree Rating

Meets
ANSI B30.5
Requirements



999 SERIES 3

50 Ft. JIB

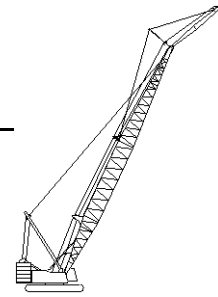
Jib Oper. Rad. Feet	0 Degree Offset			10 Degree Offset			20 Degree Offset			Jib Oper. Rad. Feet
	Boom Ang. Deg.	Jib Point Elev. Feet	Jib Capacity Pounds	Boom Ang. Deg.	Jib Point Elev. Feet	Jib Capacity Pounds	Boom Ang. Deg.	Jib Point Elev. Feet	Jib Capacity Pounds	
210 Ft. BOOM										
50	81.0	265.9	20,000 *							50
55	79.9	265.0	20,000 *							55
60	78.8	264.0	20,000 *	80.6	263.0	20,000*				60
65	77.6	262.9	20,000 *	79.5	261.8	20,000*				65
70	76.5	261.7	20,000 *	78.3	260.6	20,000*	80.1	258.2	20,000*	70
75	75.4	260.4	20,000 *	77.2	259.3	20,000*	79.0	256.8	20,000*	75
80	74.2	259.0	20,000 *	76.1	257.9	20,000*	77.8	255.4	20,000*	80
85	73.1	257.4	20,000 *	74.9	256.3	20,000*	76.7	253.8	20,000*	85
90	71.9	255.8	20,000 *	73.8	254.7	20,000*	75.5	252.2	20,000*	90
100	69.6	252.2	20,000 *	71.4	251.0	20,000*	73.1	248.5	20,000*	100
110	67.2	248.1	20,000 *	69.0	246.9	20,000*	70.7	244.3	20,000*	110
120	64.8	243.5	20,000 *	66.6	242.3	20,000*	68.3	239.7	20,000*	120
130	62.4	238.4	20,000 *	64.1	237.2	20,000*	65.8	234.5	20,000*	130
140	59.8	232.7	20,000 *	61.6	231.5	20,000*	63.2	228.7	20,000*	140
150	57.3	226.4	20,000 *	59.0	225.2	20,000*	60.6	222.3	20,000*	150
160	54.6	219.5	20,000 *	56.3	218.2	20,000*	57.9	215.2	20,000*	160
170	51.8	211.8	19,300	53.5	210.5	20,000*	55.0	207.4	19,900*	170
180	49.0	203.3	17,100	50.6	201.9	17,700	52.1	198.7	18,200	180
190	46.0	193.9	15,100	47.6	192.4	15,600	49.0	189.1	16,100	190
200	42.8	183.5	13,400	44.4	181.9	13,800	45.8	178.3	14,200	200
210	39.4	171.7	11,800	41.0	170.0	12,200	42.3	166.1	12,500	210
220	35.7	158.4	10,300	37.3	156.5	10,600				220
230	31.7	143.0	9,000	33.2	141.0	9,300				230
240	27.2	124.8	7,700	28.6	122.4	8,000				240
250	21.7	102.1	6,600							250



Liftcrane Jib Capacities

New York City Code
Jib No. 123 With 12 Ft. 6 in. Strut On
Boom No. 82LR
219,600 Lb. Crane Counterweight
80,000 Lb. Carbody Counterweight
360 Degree Rating

Meets
ANSI B30.5
Requirements



999 SERIES 3

50 Ft. JIB

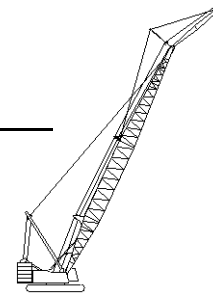
Jib Oper. Rad. Feet	0 Degree Offset			10 Degree Offset			20 Degree Offset			Jib Oper. Rad. Feet
	Boom Ang. Deg.	Jib Point Elev. Feet	Jib Capacity Pounds	Boom Ang. Deg.	Jib Point Elev. Feet	Jib Capacity Pounds	Boom Ang. Deg.	Jib Point Elev. Feet	Jib Capacity Pounds	
220 Ft. BOOM										
55	80.2	275.2	20,000 *							55
60	79.2	274.2	20,000 *	81.0	273.2	20,000*				60
65	78.1	273.2	20,000 *	79.9	272.1	20,000*				65
70	77.0	272.0	20,000 *	78.8	270.9	20,000*	80.5	268.4	20,000*	70
75	75.9	270.8	20,000 *	77.7	269.6	20,000*	79.4	267.2	20,000*	75
80	74.8	269.4	20,000 *	76.6	268.3	20,000*	78.3	265.8	20,000*	80
85	73.7	267.9	20,000 *	75.5	266.8	20,000*	77.2	264.3	20,000*	85
90	72.6	266.3	20,000 *	74.4	265.2	20,000*	76.1	262.7	20,000*	90
100	70.4	262.9	20,000 *	72.1	261.7	20,000*	73.8	259.2	20,000*	100
110	68.1	258.9	20,000 *	69.9	257.8	20,000*	71.5	255.2	20,000*	110
120	65.8	254.6	20,000 *	67.5	253.4	20,000*	69.2	250.7	20,000*	120
130	63.5	249.7	20,000 *	65.2	248.5	20,000*	66.8	245.8	20,000*	130
140	61.1	244.3	20,000 *	62.8	243.0	20,000*	64.3	240.3	20,000*	140
150	58.6	238.3	20,000 *	60.3	237.0	20,000*	61.8	234.2	20,000*	150
160	56.1	231.7	20,000 *	57.8	230.4	20,000*	59.3	227.5	20,000*	160
170	53.5	224.5	18,800	55.1	223.2	19,500	56.6	220.1	20,000*	170
180	50.8	216.5	16,600	52.4	215.2	17,200	53.9	212.0	17,700	180
190	48.0	207.8	14,600	49.6	206.3	15,100	51.0	203.0	15,600	190
200	45.0	198.1	12,800	46.6	196.5	13,300	48.0	193.1	13,700	200
210	41.9	187.3	11,200	43.5	185.6	11,600	44.8	182.0	12,000	210
220	38.6	175.2	9,700	40.2	173.4	10,100	41.4	169.5	10,400	220
230	35.0	161.5	8,400	36.5	159.6	8,700				230
240	31.1	145.8	7,200	32.6	143.6	7,500				240
250	26.6	127.1	6,100							250
260	21.3	103.9	5,000							260



Liftcrane Jib Capacities

New York City Code
Jib No. 123 With 12 Ft. 6 in. Strut On
Boom No. 82LR
219,600 Lb. Crane Counterweight
80,000 Lb. Carbody Counterweight
360 Degree Rating

Meets
ANSI B30.5
Requirements



999 SERIES 3

50 Ft. JIB

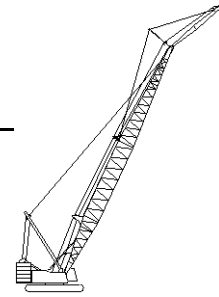
Jib Oper. Rad. Feet	0 Degree Offset			10 Degree Offset			20 Degree Offset			Jib Oper. Rad. Feet
	Boom Ang. Deg.	Jib Point Elev. Feet	Jib Capacity Pounds	Boom Ang. Deg.	Jib Point Elev. Feet	Jib Capacity Pounds	Boom Ang. Deg.	Jib Point Elev. Feet	Jib Capacity Pounds	
230 Ft. BOOM										
55	80.6	285.4	20,000 *							55
60	79.6	284.4	20,000 *							60
65	78.5	283.4	20,000 *	80.2	282.3	20,000*				65
70	77.5	282.3	20,000 *	79.2	281.2	20,000*	80.9	278.7	20,000*	70
75	76.4	281.1	20,000 *	78.1	280.0	20,000*	79.8	277.5	20,000*	75
80	75.4	279.8	20,000 *	77.1	278.7	20,000*	78.7	276.1	20,000*	80
85	74.3	278.4	20,000 *	76.0	277.2	20,000*	77.7	274.7	20,000*	85
90	73.3	276.8	20,000 *	75.0	275.7	20,000*	76.6	273.2	20,000*	90
100	71.1	273.5	20,000 *	72.8	272.4	20,000*	74.4	269.8	20,000*	100
110	68.9	269.7	20,000 *	70.6	268.6	20,000*	72.2	266.0	20,000*	110
120	66.7	265.5	20,000 *	68.4	264.4	20,000*	70.0	261.7	20,000*	120
130	64.5	260.9	20,000 *	66.1	259.7	20,000*	67.7	257.0	20,000*	130
140	62.2	255.7	20,000 *	63.8	254.5	20,000*	65.4	251.7	20,000*	140
150	59.9	250.0	20,000 *	61.5	248.8	20,000*	63.0	245.9	20,000*	150
160	57.5	243.8	20,000 *	59.1	242.5	20,000*	60.5	239.6	20,000*	160
170	55.0	236.9	18,200	56.6	235.6	18,900	58.0	232.6	19,600	170
180	52.4	229.4	16,000	54.0	228.0	16,600	55.4	224.9	17,200	180
190	49.8	221.2	14,000	51.4	219.7	14,600	52.7	216.5	15,100	190
200	47.1	212.1	12,200	48.6	210.6	12,800	49.9	207.2	13,200	200
210	44.2	202.1	10,600	45.7	200.5	11,100	47.0	197.0	11,500	210
220	41.1	191.0	9,200	42.6	189.3	9,600	43.8	185.6	9,900	220
230	37.9	178.6	7,900	39.4	176.8	8,200	40.5	172.7	8,500	230
240	34.4	164.6	6,700	35.8	162.6	7,000				240
250	30.5	148.5	5,500	31.9	146.3	5,800				250
260	26.2	129.4	4,500							260



Liftcrane Jib Capacities

New York City Code
 Jib No. 123 With 12 Ft. 6 in. Strut On
 Boom No. 82LR
 219,600 Lb. Crane Counterweight
 80,000 Lb. Carbody Counterweight
 360 Degree Rating

Meets
 ANSI B30.5
 Requirements



999 SERIES 3

50 Ft. JIB

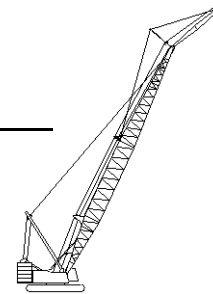
Jib Oper. Rad. Feet	0 Degree Offset			10 Degree Offset			20 Degree Offset			Jib Oper. Rad. Feet
	Boom Ang. Deg.	Jib Point Elev. Feet	Jib Capacity Pounds	Boom Ang. Deg.	Jib Point Elev. Feet	Jib Capacity Pounds	Boom Ang. Deg.	Jib Point Elev. Feet	Jib Capacity Pounds	
240 Ft. BOOM										
55	80.9	295.5	20,000 *							55
60	79.9	294.6	20,000 *							60
65	78.9	293.6	20,000 *	80.6	292.5	20,000*				65
70	77.9	292.6	20,000 *	79.6	291.4	20,000*				70
75	76.9	291.4	20,000 *	78.6	290.3	20,000*	80.2	287.8	20,000*	75
80	75.9	290.1	20,000 *	77.5	289.0	20,000*	79.1	286.5	20,000*	80
85	74.9	288.8	20,000 *	76.5	287.6	20,000*	78.1	285.1	20,000*	85
90	73.9	287.3	20,000 *	75.5	286.2	20,000*	77.1	283.6	20,000*	90
100	71.8	284.1	20,000 *	73.4	282.9	20,000*	75.0	280.4	20,000*	100
110	69.7	280.5	20,000 *	71.3	279.3	20,000*	72.9	276.7	20,000*	110
120	67.6	276.4	20,000 *	69.2	275.3	20,000*	70.7	272.6	20,000*	120
130	65.4	272.0	20,000 *	67.0	270.8	20,000*	68.5	268.1	20,000*	130
140	63.2	267.0	20,000 *	64.8	265.8	20,000*	66.3	263.0	20,000*	140
150	61.0	261.6	20,000 *	62.6	260.3	20,000*	64.0	257.5	20,000*	150
160	58.7	255.6	20,000 *	60.3	254.4	20,000*	61.7	251.5	20,000*	160
170	56.4	249.1	17,500	57.9	247.8	18,200	59.3	244.9	18,900	170
180	54.0	242.0	15,300	55.5	240.7	16,000	56.9	237.6	16,600	180
190	51.5	234.2	13,300	53.0	232.8	13,900	54.3	229.7	14,500	190
200	48.9	225.7	11,500	50.4	224.2	12,100	51.7	220.9	12,600	200
210	46.2	216.3	9,900	47.7	214.8	10,400	48.9	211.4	10,800	210
220	43.4	206.0	8,400	44.8	204.4	8,900	46.0	200.8	9,300	220
230	40.4	194.6	7,100	41.8	192.9	7,500	43.0	189.1	7,800	230
240	37.2	181.9	5,900	38.6	180.1	6,300	39.7	175.9	6,500	240
250	33.8	167.6	4,800	35.1	165.6	5,100				250
260				31.3	148.9	4,000				260



Liftcrane Jib Capacities

New York City Code
 Jib No. 123 With 12 Ft. 6 in. Strut On
 Boom No. 82LR
 219,600 Lb. Crane Counterweight
 80,000 Lb. Carbody Counterweight
 360 Degree Rating

Meets
 ANSI B30.5
 Requirements



999 SERIES 3

50 Ft. JIB

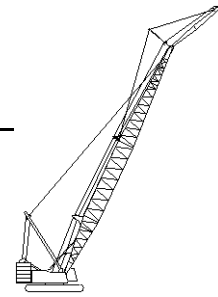
Jib Oper. Rad. Feet	0 Degree Offset			10 Degree Offset			20 Degree Offset			Jib Oper. Rad. Feet
	Boom Ang. Deg.	Jib Point Elev. Feet	Jib Capacity Pounds	Boom Ang. Deg.	Jib Point Elev. Feet	Jib Capacity Pounds	Boom Ang. Deg.	Jib Point Elev. Feet	Jib Capacity Pounds	
250 Ft. BOOM										
60	80.3	304.8	20,000 *							60
65	79.3	303.8	20,000 *	80.9	302.7	20,000*				65
70	78.3	302.8	20,000 *	79.9	301.7	20,000*				70
75	77.4	301.7	20,000 *	78.9	300.5	20,000*	80.5	298.0	20,000*	75
80	76.4	300.4	20,000 *	78.0	299.3	20,000*	79.5	296.8	20,000*	80
85	75.4	299.1	20,000 *	77.0	298.0	20,000*	78.5	295.5	20,000*	85
90	74.4	297.7	20,000 *	76.0	296.6	20,000*	77.5	294.0	20,000*	90
100	72.4	294.6	20,000 *	74.0	293.5	20,000*	75.5	290.9	20,000*	100
110	70.4	291.2	20,000 *	72.0	290.0	20,000*	73.5	287.4	20,000*	110
120	68.4	287.3	20,000 *	69.9	286.1	20,000*	71.4	283.4	20,000*	120
130	66.3	283.0	20,000 *	67.8	281.8	20,000*	69.3	279.1	20,000*	130
140	64.2	278.2	20,000 *	65.7	277.0	20,000*	67.2	274.3	20,000*	140
150	62.1	273.0	20,000 *	63.6	271.8	20,000*	65.0	269.0	20,000*	150
160	59.9	267.3	19,400	61.4	266.1	20,000*	62.8	263.2	20,000*	160
170	57.6	261.1	16,900	59.1	259.8	17,700	60.5	256.9	18,400	170
180	55.3	254.4	14,700	56.8	253.0	15,400	58.2	250.0	16,100	180
190	53.0	247.0	12,700	54.5	245.6	13,400	55.8	242.5	13,900	190
200	50.5	238.9	10,900	52.0	237.5	11,500	53.3	234.3	12,000	200
210	48.0	230.1	9,300	49.5	228.6	9,900	50.7	225.3	10,300	210
220	45.4	220.5	7,900	46.8	218.9	8,400	48.0	215.4	8,800	220
230	42.6	209.9	6,500	44.0	208.3	7,000	45.2	204.6	7,300	230
240	39.7	198.2	5,300	41.1	196.5	5,700	42.1	192.5	6,000	240
250	36.6	185.2	4,200	37.9	183.3	4,600	38.9	179.1	4,800	250



Liftcrane Jib Capacities

New York City Code
Jib No. 123 With 12 Ft. 6 in. Strut On
Boom No. 82LR
219,600 Lb. Crane Counterweight
80,000 Lb. Carbody Counterweight
360 Degree Rating

Meets
ANSI B30.5
Requirements



999 SERIES 3

50 Ft. JIB

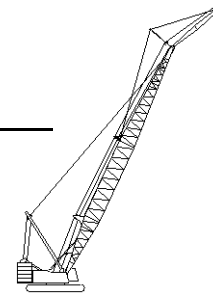
Jib Oper. Rad. Feet	0 Degree Offset			10 Degree Offset			20 Degree Offset			Jib Oper. Rad. Feet
	Boom Ang. Deg.	Jib Point Elev. Feet	Jib Capacity Pounds	Boom Ang. Deg.	Jib Point Elev. Feet	Jib Capacity Pounds	Boom Ang. Deg.	Jib Point Elev. Feet	Jib Capacity Pounds	
260 Ft. BOOM										
60	80.6	315.0	20,000 *							60
65	79.6	314.0	20,000 *							65
70	78.7	313.0	20,000 *	80.3	311.9	20,000*				70
75	77.8	311.9	20,000 *	79.3	310.8	20,000*	80.8	308.3	20,000*	75
80	76.8	310.7	20,000 *	78.4	309.6	20,000*	79.9	307.1	20,000*	80
85	75.9	309.5	20,000 *	77.4	308.3	20,000*	78.9	305.8	20,000*	85
90	74.9	308.1	20,000 *	76.5	307.0	20,000*	77.9	304.4	20,000*	90
100	73.0	305.1	20,000 *	74.5	304.0	20,000*	76.0	301.4	20,000*	100
110	71.1	301.8	20,000 *	72.6	300.6	20,000*	74.0	298.0	20,000*	110
120	69.1	298.0	20,000 *	70.6	296.9	20,000*	72.0	294.2	20,000*	120
130	67.1	293.9	20,000 *	68.6	292.7	20,000*	70.0	290.0	20,000*	130
140	65.1	289.4	20,000 *	66.6	288.1	20,000*	68.0	285.4	20,000*	140
150	63.0	284.4	20,000 *	64.5	283.1	20,000*	65.9	280.3	20,000*	150
160	60.9	278.9	18,800	62.4	277.6	19,800	63.8	274.8	20,000*	160
170	58.8	273.0	16,300	60.3	271.7	17,200	61.6	268.8	17,900	170
180	56.6	266.5	14,100	58.1	265.2	14,900	59.4	262.2	15,500	180
190	54.4	259.5	12,100	55.8	258.1	12,800	57.1	255.0	13,400	190
200	52.0	251.8	10,300	53.5	250.4	11,000	54.7	247.3	11,500	200
210	49.7	243.5	8,700	51.1	242.1	9,300	52.3	238.8	9,800	210
220	47.2	234.5	7,300	48.6	233.0	7,800	49.7	229.5	8,200	220
230	44.6	224.6	5,900	46.0	223.0	6,400	47.1	219.4	6,800	230
240	41.9	213.7	4,700	43.2	212.1	5,200	44.3	208.3	5,500	240
250				40.3	200.0	4,000	41.4	195.9	4,300	250



Liftcrane Jib Capacities

New York City Code
 Jib No. 123 With 12 Ft. 6 in. Strut On
 Boom No. 82LR
 219,600 Lb. Crane Counterweight
 80,000 Lb. Carbody Counterweight
 360 Degree Rating

Meets
 ANSI B30.5
 Requirements



999 SERIES 3

50 Ft. JIB

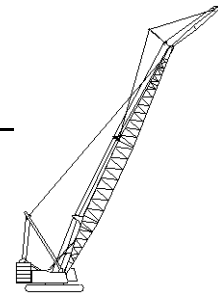
Jib Oper. Rad. Feet	0 Degree Offset			10 Degree Offset			20 Degree Offset			Jib Oper. Rad. Feet
	Boom Ang. Deg.	Jib Point Elev. Feet	Jib Capacity Pounds	Boom Ang. Deg.	Jib Point Elev. Feet	Jib Capacity Pounds	Boom Ang. Deg.	Jib Point Elev. Feet	Jib Capacity Pounds	
270 Ft. BOOM										
60	80.9	325.1	20,000 *							60
65	80.0	324.2	20,000 *							65
70	79.1	323.2	20,000 *	80.6	322.1	20,000*				70
75	78.2	322.2	20,000 *	79.7	321.0	20,000*				75
80	77.2	321.0	20,000 *	78.7	319.9	20,000*	80.2	317.3	20,000*	80
85	76.3	319.8	20,000 *	77.8	318.7	20,000*	79.3	316.1	20,000*	85
90	75.4	318.5	20,000 *	76.9	317.4	20,000*	78.3	314.8	20,000*	90
100	73.5	315.6	20,000 *	75.0	314.5	20,000*	76.5	311.9	20,000*	100
110	71.7	312.4	20,000 *	73.1	311.2	20,000*	74.6	308.6	20,000*	110
120	69.8	308.8	20,000 *	71.2	307.6	20,000*	72.6	304.9	20,000*	120
130	67.9	304.8	20,000 *	69.3	303.6	20,000*	70.7	300.9	20,000*	130
140	65.9	300.4	20,000 *	67.4	299.2	20,000*	68.7	296.4	20,000*	140
150	63.9	295.6	20,000 *	65.4	294.4	20,000*	66.7	291.6	20,000*	150
160	61.9	290.4	18,300	63.4	289.1	19,200	64.7	286.3	20,000*	160
170	59.9	284.7	15,700	61.3	283.4	16,600	62.6	280.5	17,400	170
180	57.8	278.5	13,500	59.2	277.2	14,300	60.5	274.2	15,000	180
190	55.6	271.8	11,500	57.0	270.4	12,200	58.3	267.4	12,900	190
200	53.4	264.5	9,700	54.8	263.1	10,400	56.0	260.0	11,000	200
210	51.2	256.6	8,100	52.5	255.2	8,700	53.7	252.0	9,300	210
220	48.8	248.1	6,700	50.2	246.6	7,200	51.3	243.2	7,700	220
230	46.4	238.7	5,400	47.7	237.2	5,900	48.9	233.7	6,300	230
240	43.8	228.6	4,100	45.2	227.0	4,600	46.3	223.3	5,000	240



Liftcrane Jib Capacities

New York City Code
 Jib No. 123 With 12 Ft. 6 in. Strut On
 Boom No. 82LR
 219,600 Lb. Crane Counterweight
 80,000 Lb. Carbody Counterweight
 360 Degree Rating

Meets
 ANSI B30.5
 Requirements



999 SERIES 3

50 Ft. JIB

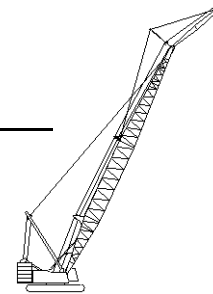
Jib Oper. Rad. Feet	0 Degree Offset			10 Degree Offset			20 Degree Offset			Jib Oper. Rad. Feet
	Boom Ang. Deg.	Jib Point Elev. Feet	Jib Capacity Pounds	Boom Ang. Deg.	Jib Point Elev. Feet	Jib Capacity Pounds	Boom Ang. Deg.	Jib Point Elev. Feet	Jib Capacity Pounds	
280 Ft. BOOM										
65	80.3	334.4	20,000 *							65
70	79.4	333.4	20,000 *	80.9	332.3	20,000*				70
75	78.5	332.4	20,000 *	80.0	331.3	20,000*				75
80	77.6	331.3	20,000 *	79.1	330.2	20,000*	80.5	327.6	20,000*	80
85	76.7	330.1	20,000 *	78.2	329.0	20,000*	79.6	326.4	20,000*	85
90	75.9	328.8	20,000 *	77.3	327.7	20,000*	78.7	325.1	20,000*	90
100	74.1	326.1	20,000 *	75.5	324.9	20,000*	76.9	322.3	20,000*	100
110	72.2	322.9	20,000 *	73.7	321.8	20,000*	75.0	319.1	20,000*	110
120	70.4	319.4	20,000 *	71.8	318.3	20,000*	73.2	315.6	20,000*	120
130	68.6	315.6	20,000 *	70.0	314.4	20,000*	71.3	311.7	20,000*	130
140	66.7	311.4	20,000 *	68.1	310.1	20,000*	69.4	307.4	20,000*	140
150	64.8	306.7	20,000 *	66.2	305.5	20,000*	67.5	302.7	20,000*	150
160	62.8	301.7	17,500	64.2	300.4	18,500	65.5	297.6	19,500	160
170	60.9	296.2	15,000	62.3	295.0	15,900	63.5	292.1	16,800	170
180	58.9	290.3	12,800	60.2	289.0	13,600	61.5	286.1	14,400	180
190	56.8	283.9	10,800	58.2	282.5	11,600	59.4	279.5	12,300	190
200	54.7	276.9	9,000	56.1	275.6	9,700	57.3	272.5	10,300	200
210	52.5	269.4	7,400	53.9	268.0	8,000	55.1	264.8	8,600	210
220	50.3	261.3	5,900	51.7	259.8	6,500	52.8	256.6	7,100	220
230	48.0	252.5	4,600	49.3	251.0	5,200	50.5	247.6	5,600	230
240							48.0	237.8	4,300	240



Liftcrane Jib Capacities

New York City Code
 Jib No. 123 With 12 Ft. 6 in. Strut On
 Boom No. 82LR
 219,600 Lb. Crane Counterweight
 80,000 Lb. Carbody Counterweight
 360 Degree Rating

Meets
 ANSI B30.5
 Requirements



999 SERIES 3

50 Ft. JIB

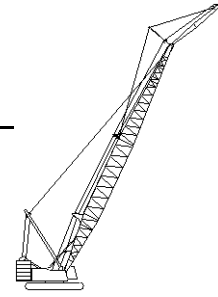
Jib Oper. Rad. Feet	0 Degree Offset			10 Degree Offset			20 Degree Offset			Jib Oper. Rad. Feet
	Boom Ang. Deg.	Jib Point Elev. Feet	Jib Capacity Pounds	Boom Ang. Deg.	Jib Point Elev. Feet	Jib Capacity Pounds	Boom Ang. Deg.	Jib Point Elev. Feet	Jib Capacity Pounds	
290 Ft. BOOM										
65	80.6	344.5	20,000 *							65
70	79.7	343.6	20,000 *							70
75	78.9	342.6	20,000 *	80.3	341.5	20,000*				75
80	78.0	341.6	20,000 *	79.4	340.4	20,000*	80.8	337.8	20,000*	80
85	77.1	340.4	20,000 *	78.5	339.3	20,000*	79.9	336.7	20,000*	85
90	76.3	339.2	20,000 *	77.7	338.0	20,000*	79.0	335.4	20,000*	90
100	74.5	336.5	20,000 *	75.9	335.3	20,000*	77.3	332.7	20,000*	100
110	72.8	333.4	20,000 *	74.2	332.3	20,000*	75.5	329.6	20,000*	110
120	71.0	330.1	20,000 *	72.4	328.9	20,000*	73.7	326.2	20,000*	120
130	69.2	326.3	20,000 *	70.6	325.1	20,000*	71.9	322.5	20,000*	130
140	67.4	322.3	20,000 *	68.8	321.0	20,000*	70.1	318.3	20,000*	140
150	65.6	317.8	19,800	66.9	316.6	20,000*	68.2	313.8	20,000*	150
160	63.7	313.0	16,900	65.1	311.7	18,000	66.3	308.9	18,900	160
170	61.8	307.7	14,400	63.2	306.4	15,400	64.4	303.5	16,200	170
180	59.9	302.0	12,200	61.2	300.7	13,000	62.4	297.8	13,800	180
190	57.9	295.8	10,200	59.2	294.5	11,000	60.4	291.5	11,700	190
200	55.9	289.2	8,400	57.2	287.8	9,100	58.4	284.8	9,800	200
210	53.8	282.0	6,800	55.1	280.6	7,500	56.3	277.5	8,100	210
220	51.7	274.3	5,300	53.0	272.8	6,000	54.1	269.6	6,500	220
230	49.5	265.9	4,000	50.8	264.4	4,600	51.9	261.1	5,100	230



Liftcrane Jib Capacities

New York City Code
Jib No. 123 With 12 Ft. 6 in. Strut On
Boom No. 82LR
219,600 Lb. Crane Counterweight
80,000 Lb. Carbody Counterweight
360 Degree Rating

Meets
ANSI B30.5
Requirements



999 SERIES 3

50 Ft. JIB

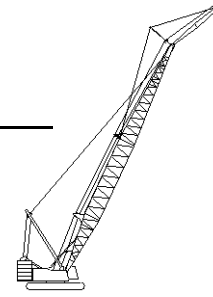
Jib Oper. Rad. Feet	0 Degree Offset			10 Degree Offset			20 Degree Offset			Jib Oper. Rad. Feet
	Boom Ang. Deg.	Jib Point Elev. Feet	Jib Capacity Pounds	Boom Ang. Deg.	Jib Point Elev. Feet	Jib Capacity Pounds	Boom Ang. Deg.	Jib Point Elev. Feet	Jib Capacity Pounds	
300 Ft. BOOM										
65	80.8	354.7	20,000 *							65
70	80.0	353.8	20,000 *							70
75	79.2	352.8	20,000 *	80.6	351.7	20,000*				75
80	78.3	351.8	20,000 *	79.7	350.6	20,000*				80
85	77.5	350.7	20,000 *	78.9	349.5	20,000*	80.2	346.9	20,000*	85
90	76.7	349.5	20,000 *	78.0	348.3	20,000*	79.4	345.7	20,000*	90
100	75.0	346.9	20,000 *	76.3	345.7	20,000*	77.7	343.1	20,000*	100
110	73.3	343.9	20,000 *	74.6	342.7	20,000*	75.9	340.1	20,000*	110
120	71.6	340.7	20,000 *	72.9	339.5	20,000*	74.2	336.8	20,000*	120
130	69.8	337.1	20,000 *	71.2	335.9	20,000*	72.5	333.2	20,000*	130
140	68.1	333.1	20,000 *	69.4	331.9	20,000*	70.7	329.2	20,000*	140
150	66.3	328.8	19,200	67.6	327.6	20,000*	68.9	324.8	20,000*	150
160	64.5	324.1	16,300	65.8	322.9	17,400	67.1	320.1	18,400	160
170	62.7	319.0	13,800	64.0	317.8	14,800	65.2	314.9	15,700	170
180	60.8	313.6	11,600	62.1	312.3	12,500	63.3	309.4	13,300	180
190	58.9	307.6	9,600	60.2	306.3	10,400	61.4	303.3	11,200	190
200	57.0	301.2	7,800	58.3	299.9	8,600	59.4	296.9	9,300	200
210	55.0	294.4	6,200	56.3	293.0	6,900	57.4	289.9	7,500	210
220	53.0	287.0	4,700	54.3	285.6	5,400	55.4	282.4	6,000	220
230				52.2	277.5	4,000	53.3	274.3	4,500	230



Liftcrane Jib Capacities

New York City Code
Jib No. 123 With 12 Ft. 6 in. Strut On
Boom No. 82LR
219,600 Lb. Crane Counterweight
80,000 Lb. Carbody Counterweight
360 Degree Rating

Meets
ANSI B30.5
Requirements



999 SERIES 3

60 Ft. JIB

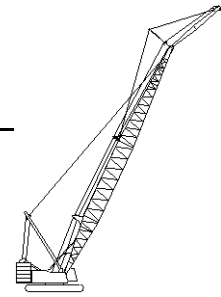
Jib Oper. Rad. Feet	0 Degree Offset			10 Degree Offset			20 Degree Offset			Jib Oper. Rad. Feet
	Boom Ang. Deg.	Jib Point Elev. Feet	Jib Capacity Pounds	Boom Ang. Deg.	Jib Point Elev. Feet	Jib Capacity Pounds	Boom Ang. Deg.	Jib Point Elev. Feet	Jib Capacity Pounds	
120 Ft. BOOM										
40	80.0	186.5	10,000 *							40
45	78.4	185.5	10,000 *							45
50	76.8	184.3	10,000 *	80.0	183.4	10,000*				50
55	75.1	183.0	10,000 *	78.4	182.0	10,000*				55
60	73.5	181.5	10,000 *	76.7	180.5	10,000*	79.9	178.2	10,000*	60
65	71.8	179.8	10,000 *	75.0	178.9	10,000*	78.2	176.5	10,000*	65
70	70.2	178.0	10,000 *	73.3	177.1	10,000*	76.5	174.7	10,000*	70
75	68.5	176.1	10,000 *	71.6	175.1	10,000*	74.7	172.7	10,000*	75
80	66.7	173.9	10,000 *	69.9	172.9	10,000*	73.0	170.5	10,000*	80
85	65.0	171.6	10,000 *	68.2	170.6	10,000*	71.2	168.1	10,000*	85
90	63.2	169.1	10,000 *	66.4	168.1	10,000*	69.4	165.5	10,000*	90
100	59.6	163.5	10,000 *	62.7	162.4	10,000*	65.7	159.8	10,000*	100
110	55.9	156.9	10,000 *	58.9	155.8	10,000*	61.8	153.1	10,000*	110
120	51.9	149.4	10,000 *	55.0	148.2	10,000*	57.8	145.3	10,000*	120
130	47.7	140.7	10,000 *	50.7	139.5	10,000*	53.5	136.4	10,000*	130
140	43.2	130.6	10,000 *	46.2	129.2	10,000*	48.8	125.9	10,000*	140
150	38.3	118.7	10,000 *	41.2	117.1	10,000*	43.7	113.4	10,000*	150
160	32.8	104.2	10,000 *	35.6	102.5	10,000*				160
170	26.2	85.9	10,000 *	28.9	83.7	10,000*				170
130 Ft. BOOM										
40	80.5	196.7	10,000 *							40
45	79.0	195.7	10,000 *							45
50	77.5	194.6	10,000 *	80.5	193.6	10,000*				50
55	75.9	193.3	10,000 *	79.0	192.4	10,000*				55
60	74.4	191.9	10,000 *	77.4	191.0	10,000*	80.4	188.6	10,000*	60
65	72.8	190.4	10,000 *	75.9	189.4	10,000*	78.8	187.0	10,000*	65
70	71.2	188.7	10,000 *	74.3	187.7	10,000*	77.2	185.3	10,000*	70
75	69.6	186.8	10,000 *	72.7	185.8	10,000*	75.6	183.4	10,000*	75
80	68.0	184.8	10,000 *	71.0	183.8	10,000*	74.0	181.3	10,000*	80
85	66.4	182.6	10,000 *	69.4	181.6	10,000*	72.3	179.1	10,000*	85
90	64.7	180.3	10,000 *	67.7	179.2	10,000*	70.6	176.7	10,000*	90
100	61.4	175.0	10,000 *	64.3	174.0	10,000*	67.2	171.3	10,000*	100
110	57.9	169.0	10,000 *	60.8	167.9	10,000*	63.6	165.1	10,000*	110
120	54.2	162.1	10,000 *	57.1	160.9	10,000*	59.8	158.0	10,000*	120
130	50.4	154.1	10,000 *	53.3	152.9	10,000*	55.9	149.8	10,000*	130
140	46.4	145.0	10,000 *	49.2	143.7	10,000*	51.7	140.4	10,000*	140
150	42.0	134.4	10,000 *	44.8	133.0	10,000*	47.2	129.4	10,000*	150
160	37.2	122.0	10,000 *	40.0	120.4	10,000*	42.2	116.5	10,000*	160
170	31.9	107.0	10,000 *	34.5	105.2	10,000*				170
180	25.5	88.1	10,000 *	28.0	85.9	10,000*				180



Liftcrane Jib Capacities

New York City Code
Jib No. 123 With 12 Ft. 6 in. Strut On
Boom No. 82LR
219,600 Lb. Crane Counterweight
80,000 Lb. Carbody Counterweight
360 Degree Rating

Meets
ANSI B30.5
Requirements



999 SERIES 3

60 Ft. JIB

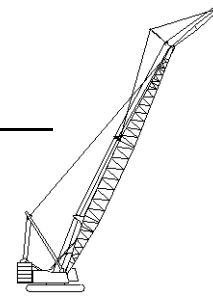
Jib Oper. Rad. Feet	0 Degree Offset			10 Degree Offset			20 Degree Offset			Jib Oper. Rad. Feet
	Boom Ang. Deg.	Jib Point Elev. Feet	Jib Capacity Pounds	Boom Ang. Deg.	Jib Point Elev. Feet	Jib Capacity Pounds	Boom Ang. Deg.	Jib Point Elev. Feet	Jib Capacity Pounds	
140 Ft. BOOM										
40	81.0	206.8	10,000 *							40
45	79.6	205.9	10,000 *							45
50	78.1	204.8	10,000 *	81.0	203.9	10,000*				50
55	76.7	203.7	10,000 *	79.5	202.7	10,000*				55
60	75.2	202.3	10,000 *	78.1	201.3	10,000*	80.9	198.9	10,000*	60
65	73.7	200.9	10,000 *	76.6	199.9	10,000*	79.4	197.4	10,000*	65
70	72.2	199.3	10,000 *	75.1	198.3	10,000*	77.9	195.8	10,000*	70
75	70.7	197.5	10,000 *	73.6	196.5	10,000*	76.4	194.0	10,000*	75
80	69.2	195.6	10,000 *	72.0	194.6	10,000*	74.8	192.1	10,000*	80
85	67.6	193.6	10,000 *	70.5	192.5	10,000*	73.3	190.0	10,000*	85
90	66.1	191.4	10,000 *	68.9	190.3	10,000*	71.7	187.7	10,000*	90
100	62.9	186.4	10,000 *	65.7	185.3	10,000*	68.4	182.7	10,000*	100
110	59.7	180.8	10,000 *	62.5	179.7	10,000*	65.1	176.9	10,000*	110
120	56.3	174.3	10,000 *	59.1	173.2	10,000*	61.6	170.3	10,000*	120
130	52.8	167.0	10,000 *	55.5	165.8	10,000*	58.0	162.8	10,000*	130
140	49.0	158.7	10,000 *	51.8	157.4	10,000*	54.2	154.2	10,000*	140
150	45.1	149.1	10,000 *	47.8	147.7	10,000*	50.2	144.3	10,000*	150
160	40.9	138.1	10,000 *	43.5	136.6	10,000*	45.8	132.9	10,000*	160
170	36.3	125.2	10,000 *	38.8	123.6	10,000*	40.9	119.4	10,000*	170
180	31.0	109.8	10,000 *	33.5	107.9	10,000*				180
190	24.8	90.3	10,000 *							190



Liftcrane Jib Capacities

New York City Code
 Jib No. 123 With 12 Ft. 6 in. Strut On
 Boom No. 82LR
 219,600 Lb. Crane Counterweight
 80,000 Lb. Carbody Counterweight
 360 Degree Rating

Meets
 ANSI B30.5
 Requirements



999 SERIES 3

60 Ft. JIB

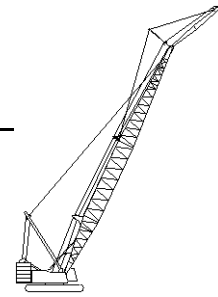
Jib Oper. Rad. Feet	0 Degree Offset			10 Degree Offset			20 Degree Offset			Jib Oper. Rad. Feet
	Boom Ang. Deg.	Jib Point Elev. Feet	Jib Capacity Pounds	Boom Ang. Deg.	Jib Point Elev. Feet	Jib Capacity Pounds	Boom Ang. Deg.	Jib Point Elev. Feet	Jib Capacity Pounds	
150 Ft. BOOM										
45	80.1	216.1	10,000 *							45
50	78.7	215.1	10,000 *							50
55	77.3	214.0	10,000 *	80.1	212.9	10,000*				55
60	75.9	212.7	10,000 *	78.7	211.7	10,000*				60
65	74.5	211.3	10,000 *	77.2	210.3	10,000*	80.0	207.8	10,000*	65
70	73.1	209.8	10,000 *	75.8	208.8	10,000*	78.5	206.2	10,000*	70
75	71.7	208.1	10,000 *	74.4	207.1	10,000*	77.1	204.6	10,000*	75
80	70.2	206.3	10,000 *	72.9	205.3	10,000*	75.6	202.7	10,000*	80
85	68.8	204.4	10,000 *	71.5	203.3	10,000*	74.1	200.7	10,000*	85
90	67.3	202.3	10,000 *	70.0	201.2	10,000*	72.6	198.6	10,000*	90
100	64.3	197.7	10,000 *	67.0	196.6	10,000*	69.6	193.9	10,000*	100
110	61.2	192.4	10,000 *	63.9	191.2	10,000*	66.4	188.5	10,000*	110
120	58.1	186.3	10,000 *	60.7	185.2	10,000*	63.2	182.3	10,000*	120
130	54.8	179.5	10,000 *	57.4	178.3	10,000*	59.9	175.3	10,000*	130
140	51.4	171.8	10,000 *	54.0	170.5	10,000*	56.3	167.4	10,000*	140
150	47.8	163.1	10,000 *	50.4	161.7	10,000*	52.6	158.4	10,000*	150
160	44.0	153.1	10,000 *	46.5	151.7	10,000*	48.7	148.2	10,000*	160
170	39.9	141.7	10,000 *	42.4	140.2	10,000*	44.4	136.3	10,000*	170
180	35.3	128.4	10,000 *	37.8	126.7	10,000*	39.7	122.4	10,000*	180
190	30.2	112.4	10,000 *	32.6	110.4	10,000*				190
200	24.2	92.4	10,000 *							200



Liftcrane Jib Capacities

New York City Code
 Jib No. 123 With 12 Ft. 6 in. Strut On
 Boom No. 82LR
 219,600 Lb. Crane Counterweight
 80,000 Lb. Carbody Counterweight
 360 Degree Rating

Meets
 ANSI B30.5
 Requirements



999 SERIES 3

60 Ft. JIB

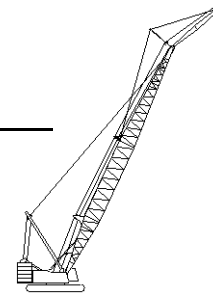
Jib Oper. Rad. Feet	0 Degree Offset			10 Degree Offset			20 Degree Offset			Jib Oper. Rad. Feet
	Boom Ang. Deg.	Jib Point Elev. Feet	Jib Capacity Pounds	Boom Ang. Deg.	Jib Point Elev. Feet	Jib Capacity Pounds	Boom Ang. Deg.	Jib Point Elev. Feet	Jib Capacity Pounds	
160 Ft. BOOM										
45	80.5	226.3	10,000 *							45
50	79.2	225.3	10,000 *							50
55	77.9	224.2	10,000 *	80.5	223.2	10,000*				55
60	76.5	223.0	10,000 *	79.2	222.0	10,000*				60
65	75.2	221.7	10,000 *	77.8	220.7	10,000*	80.4	218.1	10,000*	65
70	73.9	220.3	10,000 *	76.5	219.2	10,000*	79.1	216.7	10,000*	70
75	72.5	218.7	10,000 *	75.1	217.6	10,000*	77.7	215.1	10,000*	75
80	71.1	217.0	10,000 *	73.8	215.9	10,000*	76.3	213.3	10,000*	80
85	69.8	215.1	10,000 *	72.4	214.1	10,000*	74.9	211.5	10,000*	85
90	68.4	213.2	10,000 *	71.0	212.1	10,000*	73.5	209.4	10,000*	90
100	65.6	208.8	10,000 *	68.1	207.7	10,000*	70.6	205.0	10,000*	100
110	62.7	203.8	10,000 *	65.2	202.6	10,000*	67.6	199.9	10,000*	110
120	59.7	198.1	10,000 *	62.2	196.9	10,000*	64.6	194.1	10,000*	120
130	56.6	191.7	10,000 *	59.1	190.5	10,000*	61.5	187.6	10,000*	130
140	53.4	184.6	10,000 *	55.9	183.3	10,000*	58.2	180.2	10,000*	140
150	50.1	176.5	10,000 *	52.6	175.2	10,000*	54.8	171.9	10,000*	150
160	46.6	167.4	10,000 *	49.1	166.0	10,000*	51.2	162.6	10,000*	160
170	42.9	157.1	10,000 *	45.3	155.6	10,000*	47.4	151.9	10,000*	170
180	38.9	145.2	10,000 *	41.3	143.6	10,000*	43.2	139.6	10,000*	180
190	34.5	131.5	10,000 *	36.8	129.7	10,000*	38.6	125.2	10,000*	190
200	29.5	115.0	10,000 *	31.7	113.0	10,000*				200
210	23.6	94.4	10,000 *							210



Liftcrane Jib Capacities

New York City Code
 Jib No. 123 With 12 Ft. 6 in. Strut On
 Boom No. 82LR
 219,600 Lb. Crane Counterweight
 80,000 Lb. Carbody Counterweight
 360 Degree Rating

Meets
 ANSI B30.5
 Requirements



999 SERIES 3

60 Ft. JIB

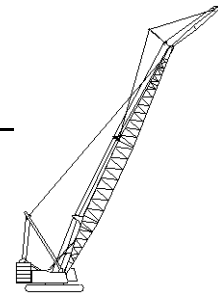
Jib Oper. Rad. Feet	0 Degree Offset			10 Degree Offset			20 Degree Offset			Jib Oper. Rad. Feet
	Boom Ang. Deg.	Jib Point Elev. Feet	Jib Capacity Pounds	Boom Ang. Deg.	Jib Point Elev. Feet	Jib Capacity Pounds	Boom Ang. Deg.	Jib Point Elev. Feet	Jib Capacity Pounds	
170 Ft. BOOM										
45	80.9	236.4	10,000 *							45
50	79.7	235.5	10,000 *							50
55	78.4	234.5	10,000 *	80.9	233.4	10,000*				55
60	77.1	233.3	10,000 *	79.7	232.3	10,000*				60
65	75.9	232.1	10,000 *	78.4	231.0	10,000*	80.9	228.5	10,000*	65
70	74.6	230.7	10,000 *	77.1	229.6	10,000*	79.6	227.0	10,000*	70
75	73.3	229.2	10,000 *	75.8	228.1	10,000*	78.2	225.5	10,000*	75
80	72.0	227.6	10,000 *	74.5	226.5	10,000*	76.9	223.9	10,000*	80
85	70.7	225.8	10,000 *	73.2	224.7	10,000*	75.6	222.1	10,000*	85
90	69.4	223.9	10,000 *	71.8	222.8	10,000*	74.2	220.2	10,000*	90
100	66.7	219.8	10,000 *	69.1	218.6	10,000*	71.5	215.9	10,000*	100
110	63.9	215.0	10,000 *	66.4	213.9	10,000*	68.7	211.1	10,000*	110
120	61.1	209.7	10,000 *	63.6	208.5	10,000*	65.9	205.7	10,000*	120
130	58.2	203.7	10,000 *	60.7	202.5	10,000*	62.9	199.5	10,000*	130
140	55.3	197.0	10,000 *	57.7	195.7	10,000*	59.9	192.7	10,000*	140
150	52.2	189.4	10,000 *	54.6	188.1	10,000*	56.7	185.0	10,000*	150
160	48.9	181.0	10,000 *	51.3	179.7	10,000*	53.4	176.3	10,000*	160
170	45.5	171.6	10,000 *	47.9	170.1	10,000*	49.9	166.6	10,000*	170
180	41.9	160.9	10,000 *	44.2	159.3	10,000*	46.1	155.5	10,000*	180
190	38.0	148.6	10,000 *	40.2	147.0	10,000*	42.1	142.8	10,000*	190
200	33.7	134.5	10,000 *	35.9	132.6	10,000*				200
210	28.8	117.6	10,000 *	31.0	115.4	10,000*				210
220	23.1	96.4	10,000 *							220



Liftcrane Jib Capacities

New York City Code
Jib No. 123 With 12 Ft. 6 in. Strut On
Boom No. 82LR
219,600 Lb. Crane Counterweight
80,000 Lb. Carbody Counterweight
360 Degree Rating

Meets
ANSI B30.5
Requirements



999 SERIES 3

60 Ft. JIB

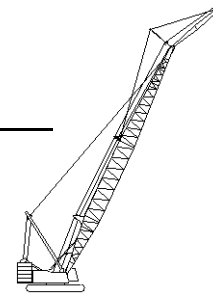
Jib Oper. Rad. Feet	0 Degree Offset			10 Degree Offset			20 Degree Offset			Jib Oper. Rad. Feet
	Boom Ang. Deg.	Jib Point Elev. Feet	Jib Capacity Pounds	Boom Ang. Deg.	Jib Point Elev. Feet	Jib Capacity Pounds	Boom Ang. Deg.	Jib Point Elev. Feet	Jib Capacity Pounds	
180 Ft. BOOM										
50	80.1	245.7	10,000 *							50
55	78.9	244.7	10,000 *							55
60	77.7	243.6	10,000 *	80.1	242.5	10,000*				60
65	76.5	242.4	10,000 *	78.9	241.3	10,000*				65
70	75.2	241.1	10,000 *	77.6	240.0	10,000*	80.0	237.4	10,000*	70
75	74.0	239.6	10,000 *	76.4	238.6	10,000*	78.8	235.9	10,000*	75
80	72.8	238.1	10,000 *	75.2	237.0	10,000*	77.5	234.4	10,000*	80
85	71.5	236.4	10,000 *	73.9	235.3	10,000*	76.2	232.7	10,000*	85
90	70.3	234.6	10,000 *	72.6	233.5	10,000*	74.9	230.8	10,000*	90
100	67.7	230.7	10,000 *	70.1	229.5	10,000*	72.3	226.8	10,000*	100
110	65.1	226.2	10,000 *	67.5	225.0	10,000*	69.7	222.2	10,000*	110
120	62.4	221.1	10,000 *	64.8	219.9	10,000*	67.0	217.1	10,000*	120
130	59.7	215.4	10,000 *	62.0	214.2	10,000*	64.2	211.3	10,000*	130
140	56.9	209.1	10,000 *	59.2	207.9	10,000*	61.3	204.8	10,000*	140
150	54.0	202.1	10,000 *	56.3	200.8	10,000*	58.4	197.6	10,000*	150
160	51.0	194.2	10,000 *	53.3	192.9	10,000*	55.3	189.6	10,000*	160
170	47.8	185.4	10,000 *	50.1	184.0	10,000*	52.1	180.6	10,000*	170
180	44.5	175.6	10,000 *	46.7	174.2	10,000*	48.6	170.5	10,000*	180
190	41.0	164.6	10,000 *	43.2	163.0	10,000*	45.0	159.1	10,000*	190
200	37.2	152.0	10,000 *	39.3	150.3	10,000*	41.0	146.0	10,000*	200
210	33.0	137.4	10,000 *	35.1	135.5	10,000*				210
220	28.2	120.1	10,000 *	30.2	117.8	10,000*				220
230	22.6	98.4	10,000 *							230



Liftcrane Jib Capacities

New York City Code
 Jib No. 123 With 12 Ft. 6 in. Strut On
 Boom No. 82LR
 219,600 Lb. Crane Counterweight
 80,000 Lb. Carbody Counterweight
 360 Degree Rating

Meets
 ANSI B30.5
 Requirements



999 SERIES 3

60 Ft. JIB

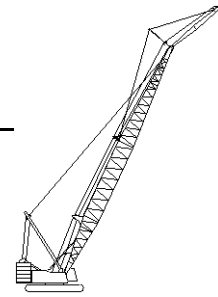
Jib Oper. Rad. Feet	0 Degree Offset			10 Degree Offset			20 Degree Offset			Jib Oper. Rad. Feet
	Boom Ang. Deg.	Jib Point Elev. Feet	Jib Capacity Pounds	Boom Ang. Deg.	Jib Point Elev. Feet	Jib Capacity Pounds	Boom Ang. Deg.	Jib Point Elev. Feet	Jib Capacity Pounds	
190 Ft. BOOM										
50	80.5	255.8	10,000 *							50
55	79.3	254.9	10,000 *							55
60	78.2	253.8	10,000 *	80.5	252.8	10,000*				60
65	77.0	252.7	10,000 *	79.3	251.6	10,000*				65
70	75.8	251.4	10,000 *	78.2	250.3	10,000*	80.4	247.7	10,000*	70
75	74.7	250.1	10,000 *	77.0	249.0	10,000*	79.2	246.3	10,000*	75
80	73.5	248.6	10,000 *	75.8	247.5	10,000*	78.0	244.8	10,000*	80
85	72.3	247.0	10,000 *	74.6	245.9	10,000*	76.8	243.2	10,000*	85
90	71.1	245.3	10,000 *	73.4	244.2	10,000*	75.6	241.5	10,000*	90
100	68.6	241.5	10,000 *	70.9	240.3	10,000*	73.1	237.6	10,000*	100
110	66.2	237.2	10,000 *	68.4	236.0	10,000*	70.6	233.2	10,000*	110
120	63.6	232.4	10,000 *	65.9	231.2	10,000*	68.0	228.3	10,000*	120
130	61.0	227.0	10,000 *	63.3	225.8	10,000*	65.4	222.9	10,000*	130
140	58.4	221.0	10,000 *	60.6	219.8	10,000*	62.7	216.8	10,000*	140
150	55.7	214.4	10,000 *	57.9	213.1	10,000*	59.9	210.0	10,000*	150
160	52.8	207.0	10,000 *	55.0	205.7	10,000*	57.0	202.5	10,000*	160
170	49.9	198.8	10,000 *	52.1	197.5	10,000*	54.0	194.1	10,000*	170
180	46.8	189.8	10,000 *	49.0	188.3	10,000*	50.8	184.8	10,000*	180
190	43.6	179.6	10,000 *	45.7	178.1	10,000*	47.5	174.3	10,000*	190
200	40.1	168.2	10,000 *	42.2	166.6	10,000*	43.9	162.5	10,000*	200
210	36.4	155.3	10,000 *	38.4	153.5	10,000*	40.0	149.0	10,000*	210
220	32.3	140.3	10,000 *	34.3	138.3	10,000*				220
230	27.6	122.5	10,000 *	29.5	120.2	10,000*				230
240	22.1	100.3	10,000 *							240



Liftcrane Jib Capacities

New York City Code
 Jib No. 123 With 12 Ft. 6 in. Strut On
 Boom No. 82LR
 219,600 Lb. Crane Counterweight
 80,000 Lb. Carbody Counterweight
 360 Degree Rating

Meets
 ANSI B30.5
 Requirements



999 SERIES 3

60 Ft. JIB

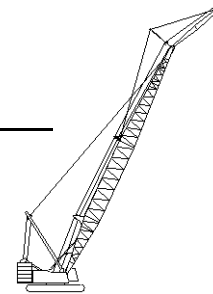
Jib Oper. Rad. Feet	0 Degree Offset			10 Degree Offset			20 Degree Offset			Jib Oper. Rad. Feet
	Boom Ang. Deg.	Jib Point Elev. Feet	Jib Capacity Pounds	Boom Ang. Deg.	Jib Point Elev. Feet	Jib Capacity Pounds	Boom Ang. Deg.	Jib Point Elev. Feet	Jib Capacity Pounds	
200 Ft. BOOM										
50	80.9	266.0	10,000 *							50
55	79.8	265.1	10,000 *							55
60	78.6	264.1	10,000 *	80.9	263.0	10,000*				60
65	77.5	263.0	10,000 *	79.7	261.9	10,000*				65
70	76.4	261.8	10,000 *	78.6	260.7	10,000*	80.8	258.0	10,000*	70
75	75.3	260.4	10,000 *	77.5	259.3	10,000*	79.7	256.7	10,000*	75
80	74.1	259.0	10,000 *	76.3	257.9	10,000*	78.5	255.2	10,000*	80
85	73.0	257.5	10,000 *	75.2	256.4	10,000*	77.3	253.7	10,000*	85
90	71.8	255.8	10,000 *	74.0	254.7	10,000*	76.2	252.0	10,000*	90
100	69.5	252.2	10,000 *	71.7	251.1	10,000*	73.8	248.3	10,000*	100
110	67.1	248.1	10,000 *	69.3	247.0	10,000*	71.4	244.2	10,000*	110
120	64.7	243.5	10,000 *	66.9	242.4	10,000*	68.9	239.5	10,000*	120
130	62.3	238.4	10,000 *	64.4	237.2	10,000*	66.4	234.3	10,000*	130
140	59.7	232.7	10,000 *	61.9	231.5	10,000*	63.9	228.5	10,000*	140
150	57.1	226.5	10,000 *	59.3	225.2	10,000*	61.2	222.1	10,000*	150
160	54.5	219.5	10,000 *	56.6	218.2	10,000*	58.5	215.0	10,000*	160
170	51.7	211.9	10,000 *	53.8	210.5	10,000*	55.7	207.2	10,000*	170
180	48.9	203.4	10,000 *	50.9	202.0	10,000*	52.7	198.5	10,000*	180
190	45.8	194.0	10,000 *	47.9	192.5	10,000*	49.7	188.8	10,000*	190
200	42.7	183.5	10,000 *	44.7	181.9	10,000*	46.4	178.1	10,000*	200
210	39.3	171.8	10,000 *	41.3	170.1	10,000*	42.9	165.9	10,000*	210
220	35.6	158.4	10,000 *	37.6	156.6	10,000*	39.1	152.0	10,000*	220
230	31.6	143.1	9,700	33.5	141.0	10,000*				230
240	27.1	124.9	8,500	28.9	122.5	8,700				240
250	21.6	102.2	7,300							250



Liftcrane Jib Capacities

New York City Code
 Jib No. 123 With 12 Ft. 6 in. Strut On
 Boom No. 82LR
 219,600 Lb. Crane Counterweight
 80,000 Lb. Carbody Counterweight
 360 Degree Rating

Meets
 ANSI B30.5
 Requirements



999 SERIES 3

60 Ft. JIB

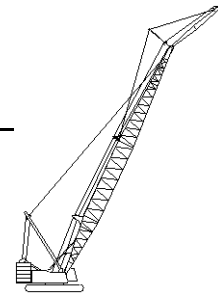
Jib Oper. Rad. Feet	0 Degree Offset			10 Degree Offset			20 Degree Offset			Jib Oper. Rad. Feet
	Boom Ang. Deg.	Jib Point Elev. Feet	Jib Capacity Pounds	Boom Ang. Deg.	Jib Point Elev. Feet	Jib Capacity Pounds	Boom Ang. Deg.	Jib Point Elev. Feet	Jib Capacity Pounds	
210 Ft. BOOM										
55	80.1	275.3	10,000 *							55
60	79.1	274.3	10,000 *							60
65	78.0	273.2	10,000 *	80.1	272.1	10,000*				65
70	76.9	272.1	10,000 *	79.0	271.0	10,000*				70
75	75.8	270.8	10,000 *	78.0	269.7	10,000*	80.1	267.0	10,000*	75
80	74.7	269.4	10,000 *	76.9	268.3	10,000*	78.9	265.6	10,000*	80
85	73.6	268.0	10,000 *	75.8	266.8	10,000*	77.8	264.1	10,000*	85
90	72.5	266.4	10,000 *	74.6	265.3	10,000*	76.7	262.5	10,000*	90
100	70.3	262.9	10,000 *	72.4	261.8	10,000*	74.4	259.0	10,000*	100
110	68.0	259.0	10,000 *	70.1	257.8	10,000*	72.1	255.0	10,000*	110
120	65.7	254.6	10,000 *	67.8	253.4	10,000*	69.8	250.6	10,000*	120
130	63.4	249.7	10,000 *	65.4	248.5	10,000*	67.4	245.6	10,000*	130
140	61.0	244.3	10,000 *	63.0	243.1	10,000*	65.0	240.1	10,000*	140
150	58.5	238.3	10,000 *	60.6	237.1	10,000*	62.5	234.0	10,000*	150
160	56.0	231.8	10,000 *	58.0	230.5	10,000*	59.9	227.3	10,000*	160
170	53.4	224.5	10,000 *	55.4	223.2	10,000*	57.2	219.9	10,000*	170
180	50.7	216.6	10,000 *	52.7	215.2	10,000*	54.5	211.8	10,000*	180
190	47.9	207.8	10,000 *	49.9	206.4	10,000*	51.6	202.8	10,000*	190
200	44.9	198.1	10,000 *	46.9	196.6	10,000*	48.6	192.8	10,000*	200
210	41.8	187.3	10,000 *	43.8	185.7	10,000*	45.4	181.7	10,000*	210
220	38.5	175.2	10,000 *	40.4	173.5	10,000*	42.0	169.2	10,000*	220
230	34.9	161.6	9,100	36.8	159.7	9,500	38.2	155.0	9,800	230
240	31.0	145.8	7,900	32.8	143.7	8,200				240
250	26.6	127.2	6,800	28.3	124.8	7,000				250
260	21.2	104.0	5,700							260



Liftcrane Jib Capacities

New York City Code
 Jib No. 123 With 12 Ft. 6 in. Strut On
 Boom No. 82LR
 219,600 Lb. Crane Counterweight
 80,000 Lb. Carbody Counterweight
 360 Degree Rating

Meets
 ANSI B30.5
 Requirements



999 SERIES 3

60 Ft. JIB

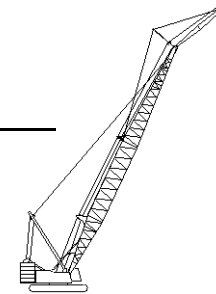
Jib Oper. Rad. Feet	0 Degree Offset			10 Degree Offset			20 Degree Offset			Jib Oper. Rad. Feet
	Boom Ang. Deg.	Jib Point Elev. Feet	Jib Capacity Pounds	Boom Ang. Deg.	Jib Point Elev. Feet	Jib Capacity Pounds	Boom Ang. Deg.	Jib Point Elev. Feet	Jib Capacity Pounds	
220 Ft. BOOM										
55	80.5	285.4	10,000 *							55
60	79.5	284.5	10,000 *							60
65	78.4	283.5	10,000 *	80.5	282.4	10,000*				65
70	77.4	282.3	10,000 *	79.4	281.2	10,000*				70
75	76.3	281.1	10,000 *	78.4	280.0	10,000*	80.4	277.3	10,000*	75
80	75.3	279.8	10,000 *	77.3	278.7	10,000*	79.4	276.0	10,000*	80
85	74.2	278.4	10,000 *	76.3	277.3	10,000*	78.3	274.5	10,000*	85
90	73.2	276.9	10,000 *	75.2	275.7	10,000*	77.2	273.0	10,000*	90
100	71.0	273.5	10,000 *	73.1	272.4	10,000*	75.0	269.6	10,000*	100
110	68.8	269.8	10,000 *	70.9	268.6	10,000*	72.8	265.8	10,000*	110
120	66.6	265.6	10,000 *	68.7	264.4	10,000*	70.6	261.5	10,000*	120
130	64.4	260.9	10,000 *	66.4	259.7	10,000*	68.3	256.8	10,000*	130
140	62.1	255.7	10,000 *	64.1	254.5	10,000*	66.0	251.5	10,000*	140
150	59.8	250.1	10,000 *	61.7	248.8	10,000*	63.6	245.7	10,000*	150
160	57.4	243.8	10,000 *	59.3	242.5	10,000*	61.1	239.4	10,000*	160
170	54.9	237.0	10,000 *	56.9	235.6	10,000*	58.6	232.4	10,000*	170
180	52.3	229.5	10,000 *	54.3	228.1	10,000*	56.0	224.7	10,000*	180
190	49.7	221.2	10,000 *	51.6	219.8	10,000*	53.3	216.3	10,000*	190
200	47.0	212.1	10,000 *	48.9	210.7	10,000*	50.5	207.0	10,000*	200
210	44.1	202.1	10,000 *	46.0	200.6	10,000*	47.6	196.7	10,000*	210
220	41.0	191.0	9,900	42.9	189.4	10,000*	44.4	185.3	10,000*	220
230	37.8	178.6	8,600	39.6	176.9	9,000	41.1	172.5	9,300	230
240	34.3	164.6	7,300	36.1	162.7	7,700				240
250	30.4	148.5	6,200	32.2	146.4	6,500				250
260	26.1	129.5	5,200	27.7	127.0	5,400				260
270	20.8	105.8	4,200							270



Liftcrane Jib Capacities

New York City Code
Jib No. 123 With 12 Ft. 6 in. Strut On
Boom No. 82LR
219,600 Lb. Crane Counterweight
80,000 Lb. Carbody Counterweight
360 Degree Rating

Meets
ANSI B30.5
Requirements



999 SERIES 3

60 Ft. JIB

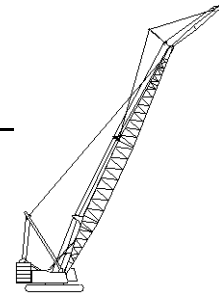
Jib Oper. Rad. Feet	0 Degree Offset			10 Degree Offset			20 Degree Offset			Jib Oper. Rad. Feet
	Boom Ang. Deg.	Jib Point Elev. Feet	Jib Capacity Pounds	Boom Ang. Deg.	Jib Point Elev. Feet	Jib Capacity Pounds	Boom Ang. Deg.	Jib Point Elev. Feet	Jib Capacity Pounds	
230 Ft. BOOM										
55	80.8	295.6	10,000 *							55
60	79.8	294.7	10,000 *							60
65	78.8	293.7	10,000 *	80.8	292.6	10,000*				65
70	77.8	292.6	10,000 *	79.8	291.5	10,000*				70
75	76.8	291.4	10,000 *	78.8	290.3	10,000*	80.8	287.6	10,000*	75
80	75.8	290.2	10,000 *	77.8	289.0	10,000*	79.7	286.3	10,000*	80
85	74.8	288.8	10,000 *	76.8	287.7	10,000*	78.7	284.9	10,000*	85
90	73.8	287.3	10,000 *	75.7	286.2	10,000*	77.7	283.4	10,000*	90
100	71.7	284.1	10,000 *	73.7	283.0	10,000*	75.6	280.2	10,000*	100
110	69.6	280.5	10,000 *	71.6	279.3	10,000*	73.5	276.5	10,000*	110
120	67.5	276.5	10,000 *	69.4	275.3	10,000*	71.3	272.4	10,000*	120
130	65.3	272.0	10,000 *	67.3	270.8	10,000*	69.1	267.9	10,000*	130
140	63.1	267.1	10,000 *	65.1	265.8	10,000*	66.9	262.8	10,000*	140
150	60.9	261.6	10,000 *	62.8	260.4	10,000*	64.6	257.3	10,000*	150
160	58.6	255.7	10,000 *	60.5	254.4	10,000*	62.3	251.3	10,000*	160
170	56.3	249.2	10,000 *	58.2	247.9	10,000*	59.9	244.6	10,000*	170
180	53.9	242.0	10,000 *	55.7	240.7	10,000*	57.4	237.4	10,000*	180
190	51.4	234.3	10,000 *	53.2	232.9	10,000*	54.9	229.4	10,000*	190
200	48.8	225.7	10,000 *	50.6	224.3	10,000*	52.3	220.7	10,000*	200
210	46.1	216.4	10,000 *	47.9	214.9	10,000*	49.5	211.1	10,000*	210
220	43.3	206.1	9,300	45.1	204.5	9,800	46.6	200.6	10,000*	220
230	40.3	194.7	8,000	42.1	193.0	8,500	43.5	188.8	8,900	230
240	37.1	182.0	6,800	38.9	180.2	7,200	40.2	175.6	7,500	240
250	33.7	167.6	5,700	35.4	165.6	6,000				250
260	29.9	151.2	4,600	31.6	148.9	4,900				260



Liftcrane Jib Capacities

New York City Code
Jib No. 123 With 12 Ft. 6 in. Strut On
Boom No. 82LR
219,600 Lb. Crane Counterweight
80,000 Lb. Carbody Counterweight
360 Degree Rating

Meets
ANSI B30.5
Requirements



999 SERIES 3

60 Ft. JIB

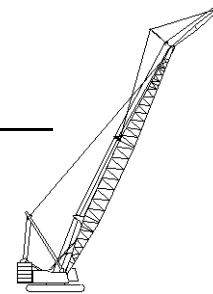
Jib Oper. Rad. Feet	0 Degree Offset			10 Degree Offset			20 Degree Offset			Jib Oper. Rad. Feet
	Boom Ang. Deg.	Jib Point Elev. Feet	Jib Capacity Pounds	Boom Ang. Deg.	Jib Point Elev. Feet	Jib Capacity Pounds	Boom Ang. Deg.	Jib Point Elev. Feet	Jib Capacity Pounds	
240 Ft. BOOM										
60	80.2	304.8	10,000 *							60
65	79.2	303.9	10,000 *							65
70	78.2	302.8	10,000 *	80.2	301.7	10,000*				70
75	77.3	301.7	10,000 *	79.2	300.6	10,000*				75
80	76.3	300.5	10,000 *	78.2	299.3	10,000*	80.1	296.6	10,000*	80
85	75.3	299.2	10,000 *	77.2	298.0	10,000*	79.1	295.3	10,000*	85
90	74.3	297.8	10,000 *	76.2	296.6	10,000*	78.1	293.8	10,000*	90
100	72.3	294.7	10,000 *	74.2	293.5	10,000*	76.1	290.7	10,000*	100
110	70.3	291.2	10,000 *	72.2	290.0	10,000*	74.0	287.2	10,000*	110
120	68.3	287.3	10,000 *	70.2	286.1	10,000*	72.0	283.2	10,000*	120
130	66.2	283.0	10,000 *	68.1	281.8	10,000*	69.9	278.9	10,000*	130
140	64.1	278.3	10,000 *	66.0	277.1	10,000*	67.7	274.1	10,000*	140
150	62.0	273.1	10,000 *	63.8	271.8	10,000*	65.6	268.8	10,000*	150
160	59.8	267.4	10,000 *	61.6	266.1	10,000*	63.3	263.0	10,000*	160
170	57.5	261.2	10,000 *	59.4	259.9	10,000*	61.1	256.7	10,000*	170
180	55.2	254.4	10,000 *	57.1	253.1	10,000*	58.7	249.8	10,000*	180
190	52.9	247.0	10,000 *	54.7	245.6	10,000*	56.3	242.2	10,000*	190
200	50.4	239.0	10,000 *	52.2	237.5	10,000*	53.8	234.0	10,000*	200
210	47.9	230.2	10,000 *	49.7	228.7	10,000*	51.2	225.0	10,000*	210
220	45.3	220.5	8,600	47.0	219.0	9,100	48.5	215.2	9,600	220
230	42.5	210.0	7,300	44.3	208.3	7,800	45.7	204.3	8,200	230
240	39.6	198.3	6,000	41.3	196.5	6,500	42.7	192.2	6,900	240
250	36.5	185.3	4,900	38.2	183.4	5,300	39.5	178.8	5,700	250
260				34.7	168.5	4,300				260



Liftcrane Jib Capacities

New York City Code
Jib No. 123 With 12 Ft. 6 in. Strut On
Boom No. 82LR
219,600 Lb. Crane Counterweight
80,000 Lb. Carbody Counterweight
360 Degree Rating

Meets
ANSI B30.5
Requirements



999 SERIES 3

60 Ft. JIB

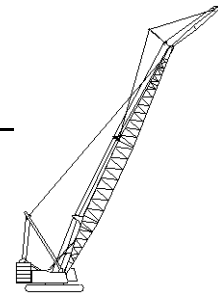
Jib Oper. Rad. Feet	0 Degree Offset			10 Degree Offset			20 Degree Offset			Jib Oper. Rad. Feet
	Boom Ang. Deg.	Jib Point Elev. Feet	Jib Capacity Pounds	Boom Ang. Deg.	Jib Point Elev. Feet	Jib Capacity Pounds	Boom Ang. Deg.	Jib Point Elev. Feet	Jib Capacity Pounds	
250 Ft. BOOM										
60	80.5	315.0	10,000 *							60
65	79.6	314.1	10,000 *							65
70	78.6	313.1	10,000 *	80.5	311.9	10,000*				70
75	77.7	312.0	10,000 *	79.5	310.8	10,000*				75
80	76.7	310.8	10,000 *	78.6	309.6	10,000*	80.4	306.9	10,000*	80
85	75.8	309.5	10,000 *	77.6	308.4	10,000*	79.5	305.6	10,000*	85
90	74.8	308.2	10,000 *	76.7	307.0	10,000*	78.5	304.2	10,000*	90
100	72.9	305.2	10,000 *	74.8	304.0	10,000*	76.6	301.2	10,000*	100
110	71.0	301.8	10,000 *	72.8	300.7	10,000*	74.6	297.8	10,000*	110
120	69.0	298.1	10,000 *	70.8	296.9	10,000*	72.6	294.0	10,000*	120
130	67.0	293.9	10,000 *	68.8	292.7	10,000*	70.6	289.8	10,000*	130
140	65.0	289.4	10,000 *	66.8	288.2	10,000*	68.5	285.2	10,000*	140
150	62.9	284.4	10,000 *	64.7	283.2	10,000*	66.4	280.1	10,000*	150
160	60.8	279.0	10,000 *	62.6	277.7	10,000*	64.3	274.6	10,000*	160
170	58.7	273.0	10,000 *	60.5	271.7	10,000*	62.1	268.5	10,000*	170
180	56.5	266.6	10,000 *	58.3	265.2	10,000*	59.9	262.0	10,000*	180
190	54.3	259.5	10,000 *	56.0	258.2	10,000*	57.6	254.8	10,000*	190
200	52.0	251.9	10,000 *	53.7	250.5	10,000*	55.3	247.0	10,000*	200
210	49.6	243.6	9,400	51.3	242.1	10,000*	52.8	238.5	10,000*	210
220	47.1	234.5	8,000	48.8	233.0	8,600	50.3	229.3	9,100	220
230	44.5	224.6	6,700	46.2	223.0	7,200	47.6	219.1	7,700	230
240	41.8	213.8	5,500	43.5	212.1	6,000	44.8	208.0	6,400	240
250	38.9	201.8	4,300	40.6	200.0	4,800	41.9	195.6	5,200	250
260							38.7	181.8	4,000	260



Liftcrane Jib Capacities

New York City Code
 Jib No. 123 With 12 Ft. 6 in. Strut On
 Boom No. 82LR
 219,600 Lb. Crane Counterweight
 80,000 Lb. Carbody Counterweight
 360 Degree Rating

Meets
 ANSI B30.5
 Requirements



999 SERIES 3

60 Ft. JIB

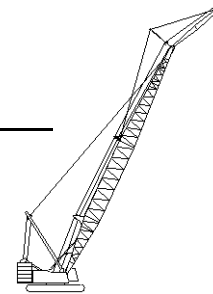
Jib Oper. Rad. Feet	0 Degree Offset			10 Degree Offset			20 Degree Offset			Jib Oper. Rad. Feet
	Boom Ang. Deg.	Jib Point Elev. Feet	Jib Capacity Pounds	Boom Ang. Deg.	Jib Point Elev. Feet	Jib Capacity Pounds	Boom Ang. Deg.	Jib Point Elev. Feet	Jib Capacity Pounds	
260 Ft. BOOM										
60	80.8	325.1	10,000 *							60
65	79.9	324.2	10,000 *							65
70	79.0	323.3	10,000 *	80.8	322.1	10,000*				70
75	78.1	322.2	10,000 *	79.9	321.1	10,000*				75
80	77.1	321.1	10,000 *	79.0	319.9	10,000*	80.7	317.1	10,000*	80
85	76.2	319.8	10,000 *	78.0	318.7	10,000*	79.8	315.9	10,000*	85
90	75.3	318.5	10,000 *	77.1	317.4	10,000*	78.9	314.6	10,000*	90
100	73.5	315.6	10,000 *	75.2	314.5	10,000*	77.0	311.6	10,000*	100
110	71.6	312.4	10,000 *	73.4	311.2	10,000*	75.1	308.4	10,000*	110
120	69.7	308.8	10,000 *	71.5	307.6	10,000*	73.2	304.7	10,000*	120
130	67.8	304.8	10,000 *	69.5	303.6	10,000*	71.2	300.7	10,000*	130
140	65.8	300.4	10,000 *	67.6	299.2	10,000*	69.3	296.2	10,000*	140
150	63.8	295.6	10,000 *	65.6	294.4	10,000*	67.2	291.4	10,000*	150
160	61.8	290.4	10,000 *	63.6	289.1	10,000*	65.2	286.0	10,000*	160
170	59.8	284.7	10,000 *	61.5	283.4	10,000*	63.1	280.3	10,000*	170
180	57.7	278.5	10,000 *	59.4	277.2	10,000*	61.0	274.0	10,000*	180
190	55.5	271.8	10,000 *	57.3	270.5	10,000*	58.8	267.1	10,000*	190
200	53.3	264.5	10,000 *	55.0	263.2	10,000*	56.6	259.7	10,000*	200
210	51.1	256.7	8,800	52.8	255.2	9,500	54.3	251.7	10,000*	210
220	48.7	248.1	7,400	50.4	246.6	8,000	51.9	243.0	8,600	220
230	46.3	238.8	6,100	48.0	237.2	6,700	49.4	233.4	7,200	230
240	43.8	228.6	4,900	45.4	227.0	5,400	46.8	223.0	5,900	240
250				42.7	215.8	4,200	44.0	211.6	4,600	250



Liftcrane Jib Capacities

New York City Code
 Jib No. 123 With 12 Ft. 6 in. Strut On
 Boom No. 82LR
 219,600 Lb. Crane Counterweight
 80,000 Lb. Carbody Counterweight
 360 Degree Rating

Meets
 ANSI B30.5
 Requirements



999 SERIES 3

60 Ft. JIB

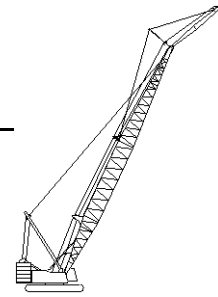
Jib Oper. Rad. Feet	0 Degree Offset			10 Degree Offset			20 Degree Offset			Jib Oper. Rad. Feet
	Boom Ang. Deg.	Jib Point Elev. Feet	Jib Capacity Pounds	Boom Ang. Deg.	Jib Point Elev. Feet	Jib Capacity Pounds	Boom Ang. Deg.	Jib Point Elev. Feet	Jib Capacity Pounds	
270 Ft. BOOM										
65	80.2	334.4	10,000 *							65
70	79.3	333.5	10,000 *							70
75	78.4	332.4	10,000 *	80.2	331.3	10,000*				75
80	77.5	331.3	10,000 *	79.3	330.2	10,000*	81.0	327.4	10,000*	80
85	76.7	330.2	10,000 *	78.4	329.0	10,000*	80.1	326.2	10,000*	85
90	75.8	328.9	10,000 *	77.5	327.7	10,000*	79.2	324.9	10,000*	90
100	74.0	326.1	10,000 *	75.7	324.9	10,000*	77.4	322.1	10,000*	100
110	72.2	323.0	10,000 *	73.9	321.8	10,000*	75.6	318.9	10,000*	110
120	70.3	319.5	10,000 *	72.1	318.3	10,000*	73.7	315.4	10,000*	120
130	68.5	315.6	10,000 *	70.2	314.4	10,000*	71.8	311.5	10,000*	130
140	66.6	311.4	10,000 *	68.3	310.2	10,000*	69.9	307.2	10,000*	140
150	64.7	306.8	10,000 *	66.4	305.5	10,000*	68.0	302.5	10,000*	150
160	62.8	301.7	10,000 *	64.5	300.5	10,000*	66.0	297.4	10,000*	160
170	60.8	296.3	10,000 *	62.5	295.0	10,000*	64.0	291.8	10,000*	170
180	58.8	290.3	10,000 *	60.5	289.0	10,000*	62.0	285.8	10,000*	180
190	56.7	283.9	10,000 *	58.4	282.6	10,000*	59.9	279.3	10,000*	190
200	54.6	277.0	9,800	56.3	275.6	10,000*	57.8	272.2	10,000*	200
210	52.5	269.5	8,200	54.1	268.0	9,000	55.6	264.6	9,700	210
220	50.2	261.3	6,800	51.9	259.9	7,500	53.3	256.3	8,100	220
230	47.9	252.5	5,500	49.6	251.0	6,100	50.9	247.3	6,700	230
240	45.5	243.0	4,300	47.1	241.4	4,800	48.5	237.5	5,300	240
250							45.9	226.8	4,100	250



Liftcrane Jib Capacities

New York City Code
Jib No. 123 With 12 Ft. 6 in. Strut On
Boom No. 82LR
219,600 Lb. Crane Counterweight
80,000 Lb. Carbody Counterweight
360 Degree Rating

Meets
ANSI B30.5
Requirements



999 SERIES 3

60 Ft. JIB

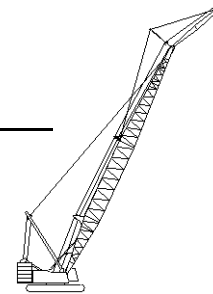
Jib Oper. Rad. Feet	0 Degree Offset			10 Degree Offset			20 Degree Offset			Jib Oper. Rad. Feet
	Boom Ang. Deg.	Jib Point Elev. Feet	Jib Capacity Pounds	Boom Ang. Deg.	Jib Point Elev. Feet	Jib Capacity Pounds	Boom Ang. Deg.	Jib Point Elev. Feet	Jib Capacity Pounds	
280 Ft. BOOM										
65	80.5	344.6	10,000 *							65
70	79.6	343.7	10,000 *							70
75	78.8	342.7	10,000 *	80.5	341.5	10,000*				75
80	77.9	341.6	10,000 *	79.6	340.4	10,000*				80
85	77.1	340.4	10,000 *	78.8	339.3	10,000*	80.4	336.5	10,000*	85
90	76.2	339.2	10,000 *	77.9	338.0	10,000*	79.5	335.2	10,000*	90
100	74.5	336.5	10,000 *	76.1	335.3	10,000*	77.8	332.5	10,000*	100
110	72.7	333.5	10,000 *	74.4	332.3	10,000*	76.0	329.4	10,000*	110
120	70.9	330.1	10,000 *	72.6	328.9	10,000*	74.2	326.0	10,000*	120
130	69.1	326.4	10,000 *	70.8	325.2	10,000*	72.4	322.2	10,000*	130
140	67.3	322.3	10,000 *	69.0	321.1	10,000*	70.6	318.1	10,000*	140
150	65.5	317.8	10,000 *	67.1	316.6	10,000*	68.7	313.6	10,000*	150
160	63.6	313.0	10,000 *	65.3	311.7	10,000*	66.8	308.6	10,000*	160
170	61.7	307.7	10,000 *	63.4	306.4	10,000*	64.9	303.3	10,000*	170
180	59.8	302.0	10,000 *	61.4	300.7	10,000*	62.9	297.5	10,000*	180
190	57.8	295.9	10,000 *	59.5	294.5	10,000*	60.9	291.3	10,000*	190
200	55.8	289.2	9,100	57.4	287.9	10,000*	58.9	284.5	10,000*	200
210	53.7	282.0	7,500	55.4	280.6	8,300	56.8	277.2	9,000	210
220	51.6	274.3	6,000	53.2	272.9	6,800	54.6	269.3	7,400	220
230	49.4	265.9	4,700	51.0	264.4	5,400	52.4	260.8	6,000	230
240				48.7	255.3	4,100	50.1	251.6	4,700	240



Liftcrane Jib Capacities

New York City Code
 Jib No. 123 With 12 Ft. 6 in. Strut On
 Boom No. 82LR
 219,600 Lb. Crane Counterweight
 80,000 Lb. Carbody Counterweight
 360 Degree Rating

Meets
 ANSI B30.5
 Requirements



999 SERIES 3

60 Ft. JIB

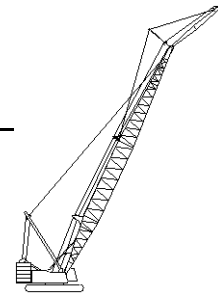
Jib Oper. Rad. Feet	0 Degree Offset			10 Degree Offset			20 Degree Offset			Jib Oper. Rad. Feet
	Boom Ang. Deg.	Jib Point Elev. Feet	Jib Capacity Pounds	Boom Ang. Deg.	Jib Point Elev. Feet	Jib Capacity Pounds	Boom Ang. Deg.	Jib Point Elev. Feet	Jib Capacity Pounds	
290 Ft. BOOM										
65	80.8	354.7	10,000 *							65
70	79.9	353.8	10,000 *							70
75	79.1	352.9	10,000 *	80.8	351.7	10,000*				75
80	78.3	351.8	10,000 *	79.9	350.7	10,000*				80
85	77.4	350.7	10,000 *	79.1	349.5	10,000*	80.7	346.7	10,000*	85
90	76.6	349.5	10,000 *	78.2	348.3	10,000*	79.9	345.5	10,000*	90
100	74.9	346.9	10,000 *	76.6	345.7	10,000*	78.2	342.9	10,000*	100
110	73.2	344.0	10,000 *	74.8	342.8	10,000*	76.4	339.9	10,000*	110
120	71.5	340.7	10,000 *	73.1	339.5	10,000*	74.7	336.6	10,000*	120
130	69.8	337.1	10,000 *	71.4	335.9	10,000*	72.9	332.9	10,000*	130
140	68.0	333.1	10,000 *	69.6	331.9	10,000*	71.2	328.9	10,000*	140
150	66.2	328.8	10,000 *	67.8	327.6	10,000*	69.4	324.6	10,000*	150
160	64.4	324.2	10,000 *	66.0	322.9	10,000*	67.5	319.8	10,000*	160
170	62.6	319.1	10,000 *	64.2	317.8	10,000*	65.7	314.7	10,000*	170
180	60.7	313.6	10,000 *	62.3	312.3	10,000*	63.8	309.1	10,000*	180
190	58.9	307.7	10,000 *	60.4	306.3	10,000*	61.9	303.1	10,000*	190
200	56.9	301.3	8,500	58.5	299.9	9,400	59.9	296.6	10,000*	200
210	54.9	294.4	6,900	56.5	293.0	7,700	57.9	289.6	8,500	210
220	52.9	287.0	5,400	54.5	285.6	6,200	55.8	282.1	6,900	220
230	50.8	279.1	4,100	52.4	277.6	4,800	53.7	274.0	5,500	230
240							51.5	265.2	4,100	240



Liftcrane Jib Capacities

New York City Code
 Jib No. 123 With 12 Ft. 6 in. Strut On
 Boom No. 82LR
 219,600 Lb. Crane Counterweight
 80,000 Lb. Carbody Counterweight
 360 Degree Rating

Meets
 ANSI B30.5
 Requirements



999 SERIES 3

60 Ft. JIB

Jib Oper. Rad. Feet	0 Degree Offset			10 Degree Offset			20 Degree Offset			Jib Oper. Rad. Feet
	Boom Ang. Deg.	Jib Point Elev. Feet	Jib Capacity Pounds	Boom Ang. Deg.	Jib Point Elev. Feet	Jib Capacity Pounds	Boom Ang. Deg.	Jib Point Elev. Feet	Jib Capacity Pounds	
300 Ft. BOOM										
65	81.0	364.9	10,000 *							65
70	80.2	364.0	10,000 *							70
75	79.4	363.1	10,000 *	81.0	361.9	10,000*				75
80	78.6	362.0	10,000 *	80.2	360.9	10,000*				80
85	77.8	361.0	10,000 *	79.4	359.8	10,000*	81.0	356.9	10,000*	85
90	77.0	359.8	10,000 *	78.6	358.6	10,000*	80.1	355.8	10,000*	90
100	75.3	357.3	10,000 *	76.9	356.1	10,000*	78.5	353.2	10,000*	100
110	73.7	354.4	10,000 *	75.3	353.2	10,000*	76.8	350.3	10,000*	110
120	72.0	351.3	10,000 *	73.6	350.0	10,000*	75.1	347.1	10,000*	120
130	70.3	347.8	10,000 *	71.9	346.5	10,000*	73.4	343.6	10,000*	130
140	68.6	343.9	10,000 *	70.2	342.7	10,000*	71.7	339.7	10,000*	140
150	66.9	339.8	10,000 *	68.5	338.5	10,000*	70.0	335.5	10,000*	150
160	65.2	335.2	10,000 *	66.8	334.0	10,000*	68.2	330.9	10,000*	160
170	63.4	330.3	10,000 *	65.0	329.1	10,000*	66.4	325.9	10,000*	170
180	61.6	325.1	10,000 *	63.2	323.8	10,000*	64.6	320.6	10,000*	180
190	59.8	319.4	9,700	61.4	318.0	10,000*	62.8	314.8	10,000*	190
200	57.9	313.2	7,900	59.5	311.9	8,800	60.9	308.6	9,700	200
210	56.1	306.6	6,300	57.6	305.2	7,100	58.9	301.9	7,900	210
220	54.1	299.5	4,800	55.6	298.1	5,600	57.0	294.7	6,400	220
230				53.6	290.5	4,200	54.9	286.9	4,900	230