

Center of Gravity

Luffing Jib No. LJ10:501 on
 Boom No. B60:500

WEIGHT AND CENTER OF GRAVITY		
	Dimension (in.)	Weight (lb)
A	0.0	131,713
B	58.3	
C	146.6	128,568
D	228.7	
SERIES 1		
E min	160.3	338,104
E mid	400.2	
E max	559.0	
F	19.3	
SERIES 2		
E min	157.0	426,104
E mid	403.7	
E max	562.5	
F	31.4	
SERIES 3		
E min	154.8	514,104
E mid	406.0	
E max	564.8	
F	42.7	

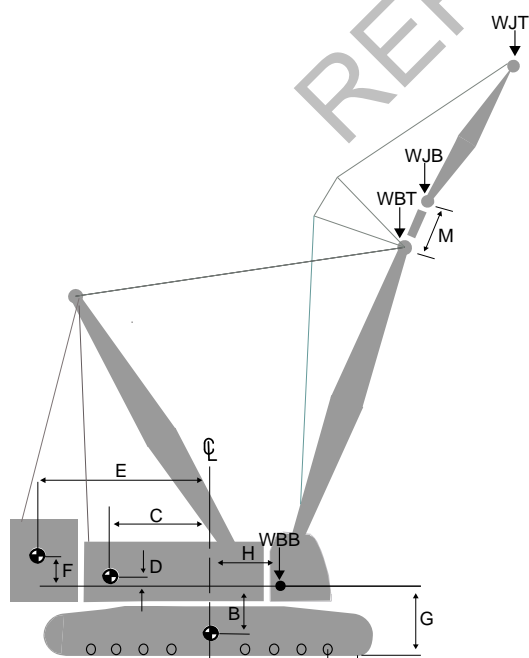
E mid is the maximum counterweight position prior to beam extension.

LATTICE WEIGHTS		
Jib Length (ft)	Luffing Jib No. LJ10:501	
	WJB (lb)	WJT (lb)
78.7	18,778	15,454
98.4	20,727	16,649
118.1	22,115	17,580
137.8	23,893	18,946
157.5	25,331	20,683
177.2	27,047	22,111
196.9	28,327	23,150
216.5	30,024	24,596
236.2	31,082	25,857
255.9	32,788	27,294
275.6	33,950	28,451
295.3	35,655	29,890
315.0	36,673	31,190

LATTICE WEIGHTS		
Boom Length (ft)	Boom No. B60:500	
	WBB (lb)	WBT (lb)
137.8	46,907	47,331
157.5	50,566	49,798
177.2	53,482	50,825
196.9	56,757	53,695
216.5	59,455	54,951
236.2	62,547	58,013
255.9	65,320	59,683
275.6	68,404	62,754
295.3	70,584	63,750

REFERENCE DIMENSIONS (in.)	
G	85.7
H	60.0
J	137.7
K	167.7
M	18.0
N	133.9

REFERENCE DIMENSIONS (in.)	
48 in. Pads	
P	20.3
R	43.1
T	47.3
60 in. Pads	
P	53.0
R	57.1
T	60.0



Note 1: Weight of all load blocks, hooks, weight ball, slings, hoist lines etc., beneath boom and jib point sheaves is not considered part of boom and jib weights. All items suspended from boom or jib must be considered part of the load.

Note 2: Consult proper crane capacity chart for lifting capacities and allowable boom and jib combinations.

Not to be used for crane rating purposes.

