

GROVE®



Lift Solutions



ALL-TERRAIN CRANES CUSTOMIZATION

CONTENTS

LSAT 1001	EXTERNAL JUMP START CABLE _____	3
LSAT 1002	EXTERNAL JUMP START CABLE WITH CLAMPS _____	4
LSAT 1003	HOSE TO INFLATE TYRE _____	5
LSAT 1004	WEDGE SOCKET _____	6
LSAT 1005	COOLING BOX _____	7
LSAT 1006	RIGGING ADAPTER GMK6300L-1 _____	8
LSAT 1007	RIGGING ADAPTER _____	9
LSAT 1008	SUPPORT PLATES _____	10
LSAT 1009	FLOOR MATS _____	11
LSAT 1010	SEAT COVERS _____	12
LSAT 1011	ADDITIONAL STORAGE BOX _____	13
LSAT 1012	COFFEE MACHINE _____	14
LSAT 1013	LITTLE HOME _____	15
LSAT 1014	DRIVER CAB INSULATION INTERIOR _____	16
LSAT 1015	SCREEN SUN PROTECTION FILM _____	17
LSAT 1016	TRAY _____	18
LSAT 1017	JOYSTICK SUPPORT RAIL _____	19
LSAT 1018	EXTENDIBLE STEP TREAD _____	20
LSAT 1019	FRONT VIEW CAMERA _____	21
LSAT 1020	ADBLUE CANISTER STORAGE _____	22
LSAT 1021	PENDANT SPOTLIGHT _____	23
LSAT 1022	ROPE PULLEY ON THE BOOM _____	24
LSAT 1023	FOLDABLE RAILINGS ON THE AUXILIARY HOIST _____	25
LSAT 1024	AUX HOIST ADAPTER _____	26
LSAT 1025	COUNTERWEIGHT ADAPTER _____	27
LSAT 1026	COUNTERWEIGHT _____	28
LSAT 1027	COUNTERWEIGHT DETECTION _____	29
LSAT 1028	STORAGE FOR SUPPORT PLATES _____	30
LSAT 1029	STORAGE FOR SINGLE LINE HEADACHE _____	31
LSAT 1030	SPRING-OPERATED EARTHING REEL _____	32
LSAT 1031	WINTER TYRES _____	33
LSAT 1032	FIRE BRIGADE CRANE _____	34
LSAT 1033	DEFENSE CRANE _____	35
LSAT 1034	HEAVY AXLE LOADS _____	36
LSAT 1035	SPECIAL DRIVING CONDITION 6300L-1 _____	37
LSAT 1036	SPECIAL DRIVING CONDITION 5250XL-1 _____	38
LSAT 1037	BIO HYDRAULIC OIL _____	39

EXTERNAL JUMP START CABLE

LSAT1001

Description

Jump start cable for external starting 12 m long with wire cross section of 70 mm². Different lengths on request.



Existing Models

All GMK's

Notes

For pricing and lead time, please contact your local dealer or the Lift Solutions Team with specific product requirements.

EXTERNAL JUMP START CABLE WITH CLAMPS

LSAT1002

Description

Jump start cable for external starting 12 m long with wire cross section of 70 mm².



Existing Models

All GMK's

Notes

For pricing and lead time, please contact your local dealer or the Lift Solutions Team with specific product requirements.

HOSE TO INFLATE TYRE

LSAT 1003

Description

Hose to inflate tyre with pressure range of 0-16 bar and hose length of 15 m fitting to air boiler.



Existing Models

All GMK's

Notes

For pricing and lead time, please contact your local dealer or the Lift Solutions Team with specific product requirements.

WEDGE SOCKET

LSAT1004

Description

For use in the event of a rope breakage.



Existing Models

All GMK`s

Notes

For pricing and lead time, please contact your local dealer or the Lift Solutions Team with specific product requirements.

COOLING BOX

LSAT1005

Description

Cooling and freezing, 12 or 24 V direct current, cooling between +10°C and -18°C.



Existing Models

ALL GMK`s

Notes

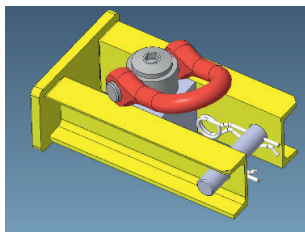
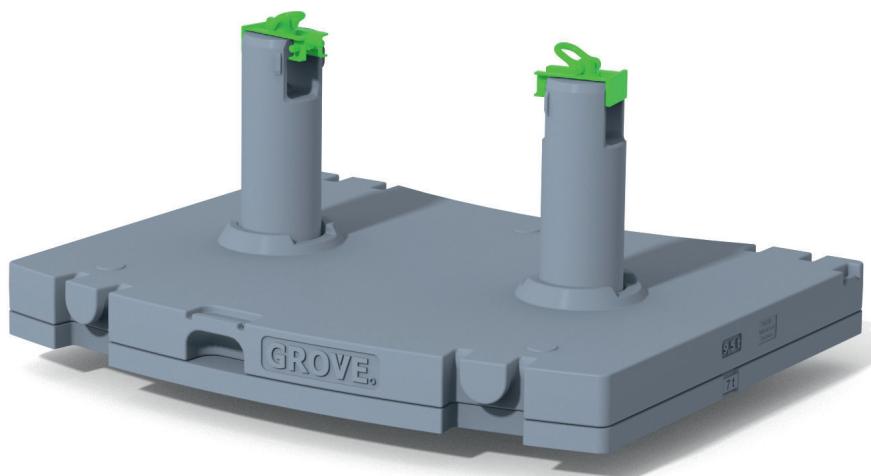
For pricing and lead time, please contact your local dealer or the Lift Solutions Team with specific product requirements.

RIGGING ADAPTER GMK6300L-1

LSAT1006

Description

Adapter for rigging baseplate together with 9,5 t counterweight plate.



Existing Models

GMK6300L-1

Notes

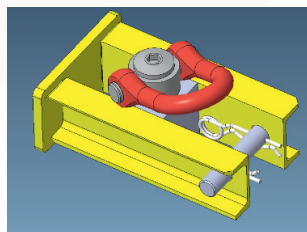
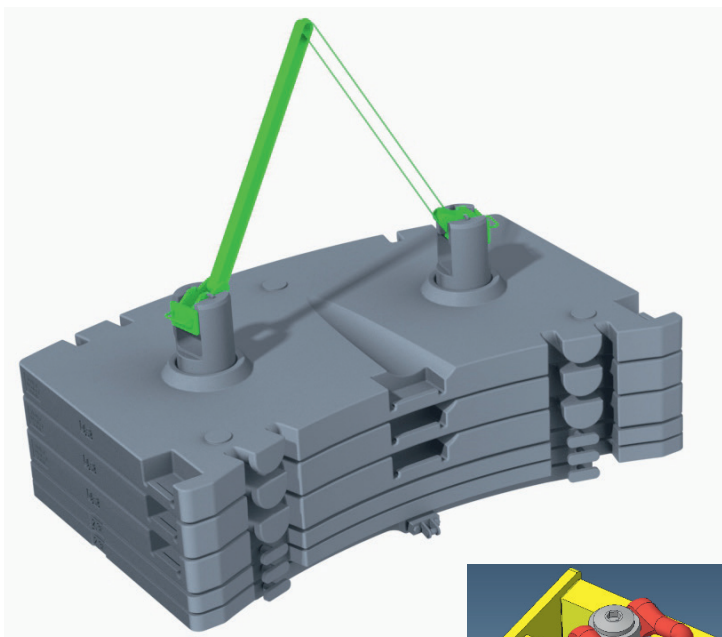
For pricing and lead time, please contact your local dealer or the Lift Solutions Team with specific product requirements.

RIGGING ADAPTER

LSAT 1007

Description

Adapter for rigging baseplate together with other counterweight plates up to 21 t.



Existing Models

GMK5120L/GMK5150-1/GMK5150L-1/GMK5150XL

Notes

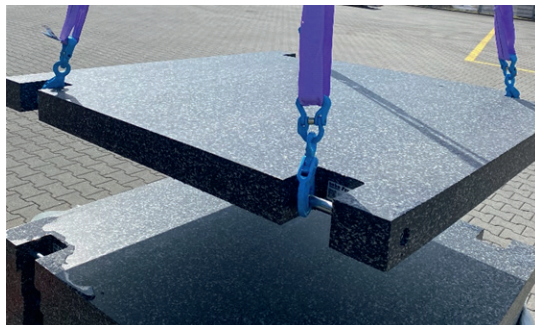
For pricing and lead time, please contact your local dealer or the Lift Solutions Team with specific product requirements.

SUPPORT PLATES

LSAT1008

Description

Support plates made of steel or plastic. Various sizes and shapes on request.



Existing Models

All GMK`s

Notes

For pricing and lead time, please contact your local dealer or the Lift Solutions Team with specific product requirements.

Description

Floor mats for carrier and superstructure cab.



Existing Models

GMK3050-3 – GMK6450-1

Notes

For pricing and lead time, please contact your local dealer or the Lift Solutions Team with specific product requirements.

SEAT COVERS

LSAT1010

Description

Seat covers for superstructure and carrier cab.



Existing Models

GMK3050-3 - GMK6450-1

Notes

For pricing and lead time, please contact your local dealer or the Lift Solutions Team with specific product requirements.

ADDITIONAL STORAGE BOX

LSAT 1011

Description

Additional storage box in the driver cab.



Existing Models

GMK5180-1 - GMK6450-1

Notes

For pricing and lead time, please contact your local dealer or the Lift Solutions Team with specific product requirements.

COFFEE MACHINE

LSAT1012

Description

Coffee machine in the driver cab.



Existing Models

GMK4070L - GMK6450-1

Notes

For pricing and lead time, please contact your local dealer or the Lift Solutions Team with specific product requirements.

Description

Storage box, voltage converter and coffee machine in the driver's cab.



Existing Models

GMK5180-1 - GMK6450-1

Notes

For pricing and lead time, please contact your local dealer or the Lift Solutions Team with specific product requirements.

DRIVER CAB INSULATION INTERIOR

LSAT1014

Description

Self adhesive mat to protect all windows in drivers cab against light and heat.



Existing Models

GMK5180-1 - GMK6450-1

Notes

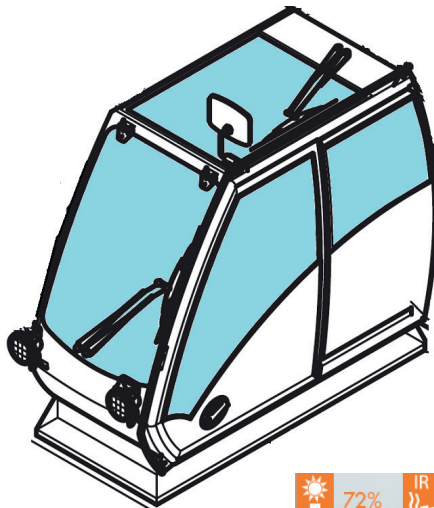
For pricing and lead time, please contact your local dealer or the Lift Solutions Team with specific product requirements.

SCREEN SUN PROTECTION FILM

LSAT 1015

Description

Sun protection film for all superstructure cap windows to reduce heat and solar radiation. Provides additional shatter protection.



Existing Models

All GMK's

Notes

For pricing and lead time, please contact your local dealer or the Lift Solutions Team with specific product requirements.

Description

Tray can be used as table or tablet holder.



Existing Models

GMK6300L-1

Notes

For pricing and lead time, please contact your local dealer or the Lift Solutions Team with specific product requirements.

JOYSTICK SUPPORT RAIL

LSAT 1017

Description

Joystick support rail.



Existing Models

GMK3050-3 - GMK6450-1

Notes

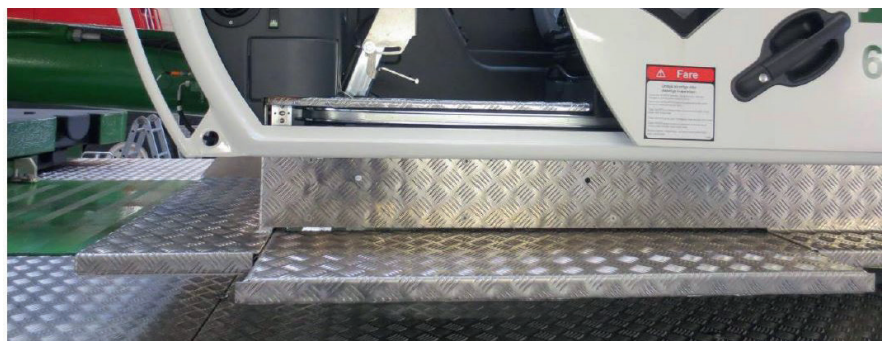
For pricing and lead time, please contact your local dealer or the Lift Solutions Team with specific product requirements.

EXTENDIBLE STEP TREAD

LSAT1018

Description

Electric extendible step tread.



Existing Models

GMK6300L-1

Notes

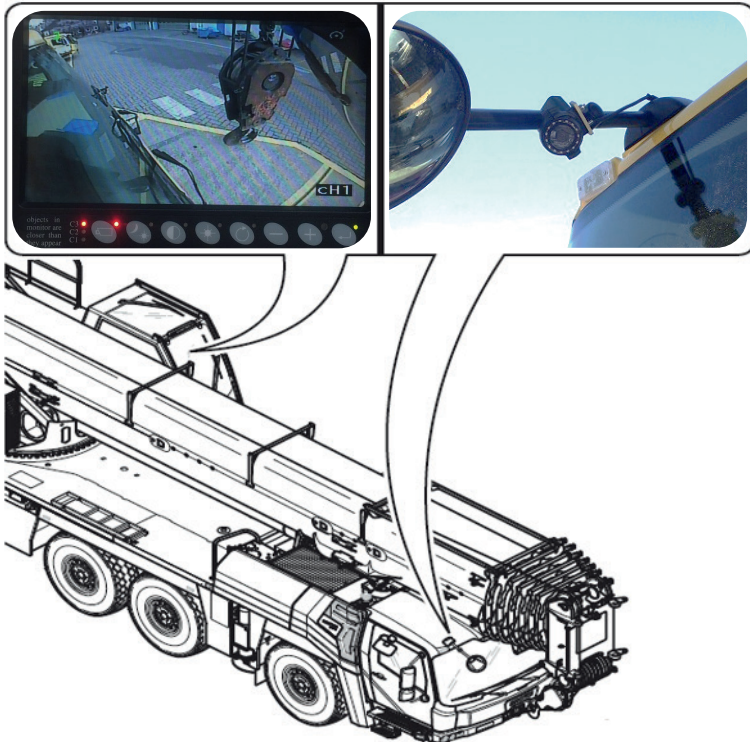
For pricing and lead time, please contact your local dealer or the Lift Solutions Team with specific product requirements.

FRONT VIEW CAMERA

LSAT 1019

Description

Front view camera for extended view from super structure cab for fixing hock block in road driving position.



Existing Models

GMK5250L-1

Notes

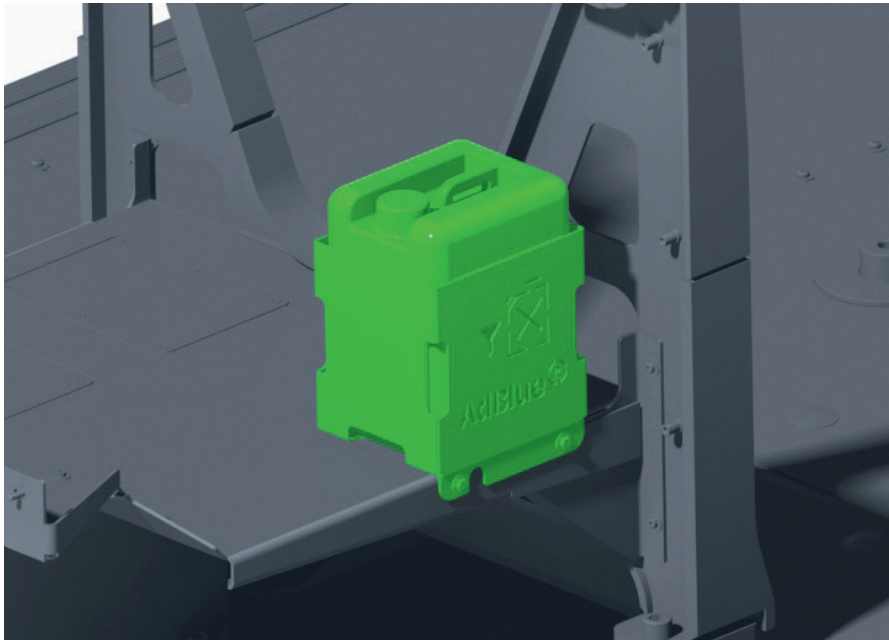
For pricing and lead time, please contact your local dealer or the Lift Solutions Team with specific product requirements.

ADBLUE CANISTER STORAGE

LSAT1020

Description

Adblue canister storage.



Existing Models

GMK5150L-1

Notes

For pricing and lead time, please contact your local dealer or the Lift Solutions Team with specific product requirements.

PENDANT SPOTLIGHT

LSAT 1021

Description

LED pendant spotlight on the boom head.



Existing Models

GMK3050-3 - GMK5250XL-1

Notes

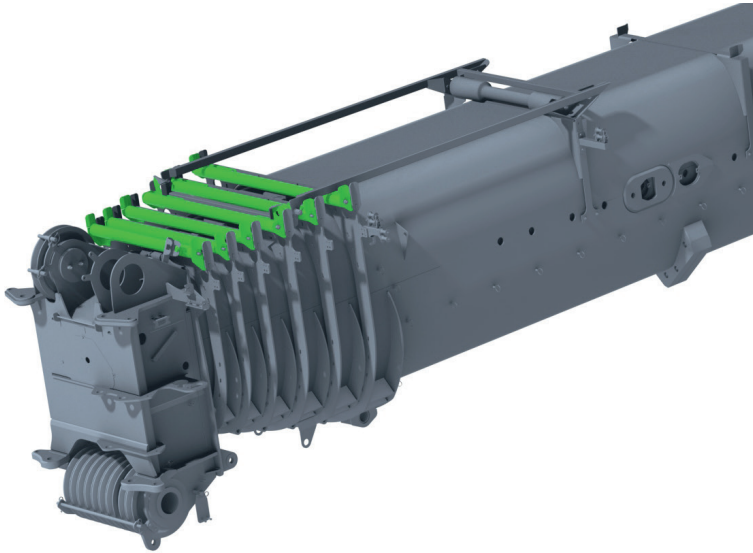
For pricing and lead time, please contact your local dealer or the Lift Solutions Team with specific product requirements.

ROPE PULLEY ON THE BOOM

LSAT1022

Description

Rope pulley instead of sliding block on all telescope sections.



Existing Models

GMK5250L-1

Notes

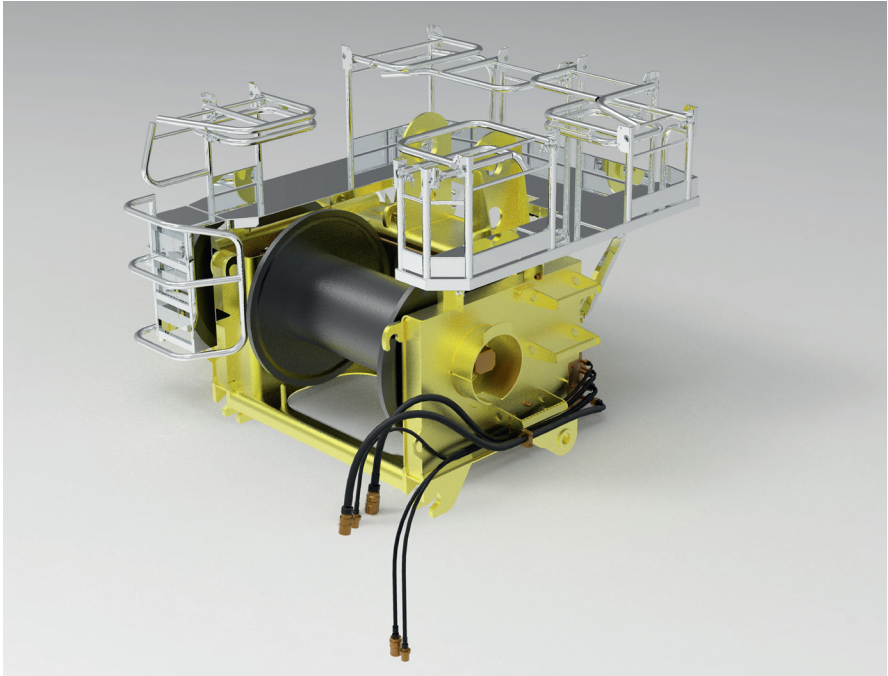
For pricing and lead time, please contact your local dealer or the Lift Solutions Team with specific product requirements.

FOLDABLE RAILINGS ON THE AUXILIARY HOIST

LSAT1023

Description

Foldable railings on the auxiliary hoist. Reduced transport height.



Existing Models

GMK6450-1

Notes

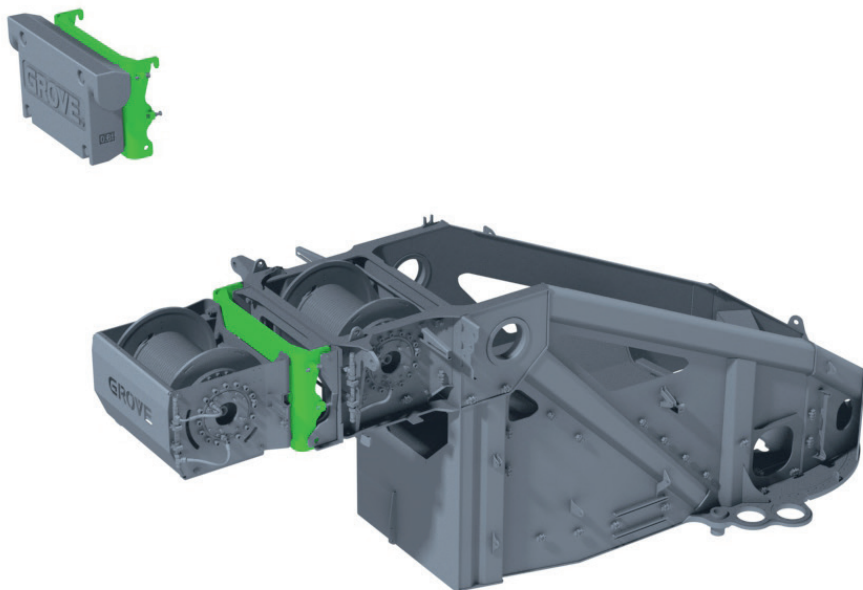
For pricing and lead time, please contact your local dealer or the Lift Solutions Team with specific product requirements.

AUX HOIST ADAPTER

LSAT1024

Description

Allows quick change between auxiliary hoist and compensation counterweight.



Existing Models

GMK4100L-2

Notes

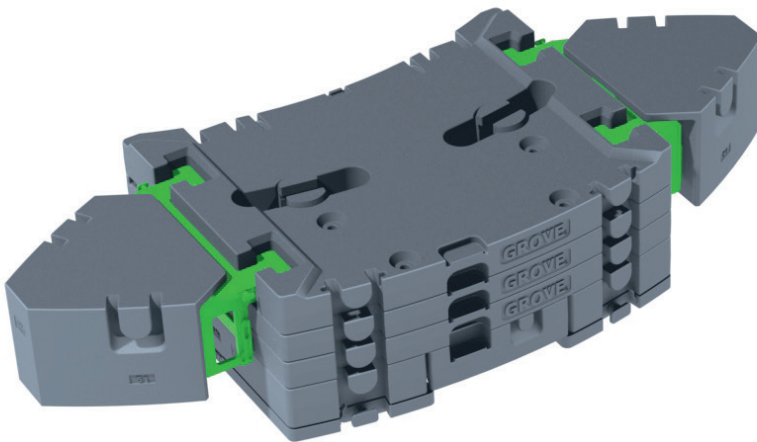
For pricing and lead time, please contact your local dealer or the Lift Solutions Team with specific product requirements.

COUNTERWEIGHT ADAPTER

LSAT1025

Description

Counterweight adapter to use the 5 t without 10 t side weights.
Including 60 t load charts.



Existing Models

GMK5250XL-1

Notes

For pricing and lead time, please contact your local dealer or the Lift Solutions Team with specific product requirements.

COUNTERWEIGHT

LSAT1026

Description

Customized customer logo on the counterweight.



Existing Models

GMK6450-1

Notes

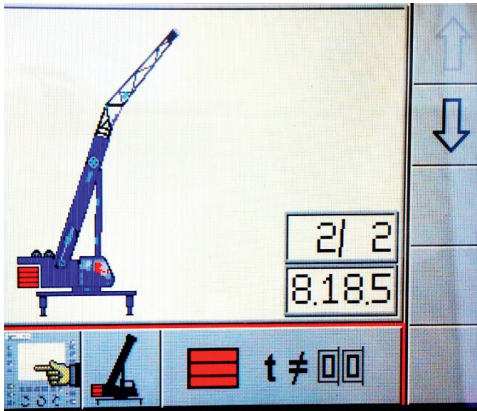
For pricing and lead time, please contact your local dealer or the Lift Solutions Team with specific product requirements.

COUNTERWEIGHT DETECTION

LSAT1027

Description

The counterweight slices are detected by sensors and provide values to the crane operating system. The LMI System only allows rigging codes once the counterweight is detected.



Existing Models

GMK6300L-1

Notes

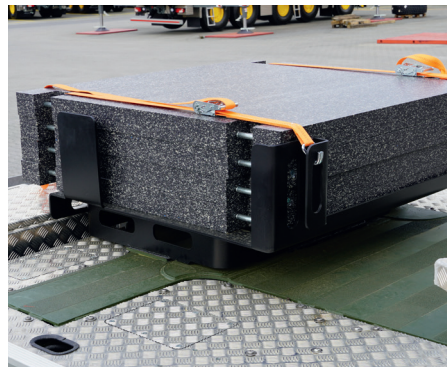
For pricing and lead time, please contact your local dealer or the Lift Solutions Team with specific product requirements.

STORAGE FOR SUPPORT PLATES

LSAT1028

Description

Storage space for 1.2 m x 1.2 m support plates on the crane.



Existing Models

GMK4080-3

Notes

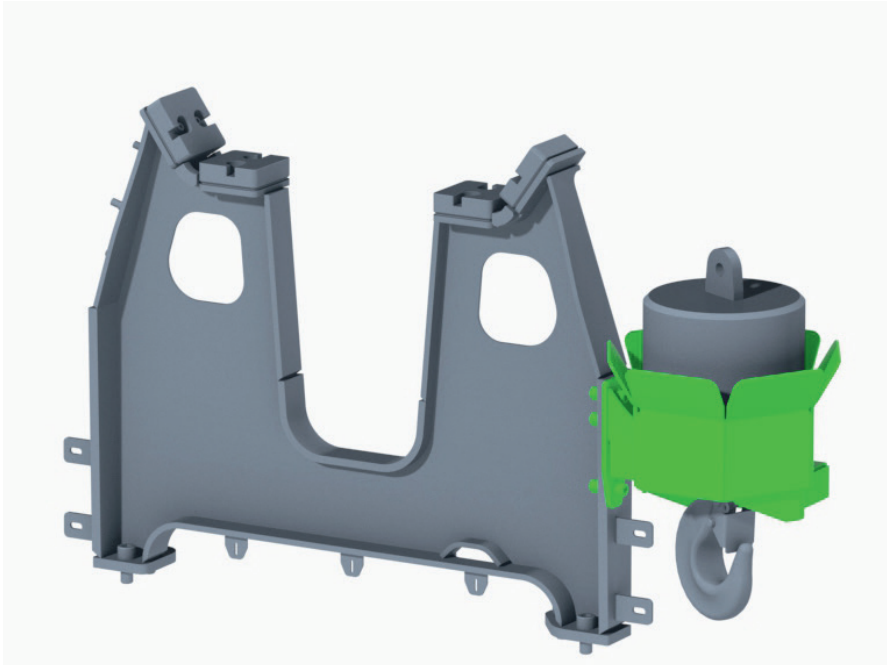
For pricing and lead time, please contact your local dealer or the Lift Solutions Team with specific product requirements.

STORAGE FOR SINGLE LINE HEADACHE

LSAT 1029

Description

Storage for single line headache ball on the crane.



Existing Models

GMK4090-1

Notes

For pricing and lead time, please contact your local dealer or the Lift Solutions Team with specific product requirements.

SPRING-OPERATED EARTHING REEL

LSAT1030

Description

Spring-operated earthing reel mounted on the crane.



Existing Models

GMK3060-2/GMK4080-3

Notes

For pricing and lead time, please contact your local dealer or the Lift Solutions Team with specific product requirements.

Description

Winter tyres Michelin Sno plus.



Existing Models

All GMK's

Notes

For pricing and lead time, please contact your local dealer or the Lift Solutions Team with specific product requirements.

FIRE BRIGADE CRANE

LSAT1032

Description

Fire brigade crane with customized lights and signals.



Existing Models

GMK3060-2

Notes

For pricing and lead time, please contact your local dealer or the Lift Solutions Team with specific product requirements.

Description

Defence crane with customized equipment.



Existing Models

GMK3050-3/GMK4080-3

Notes

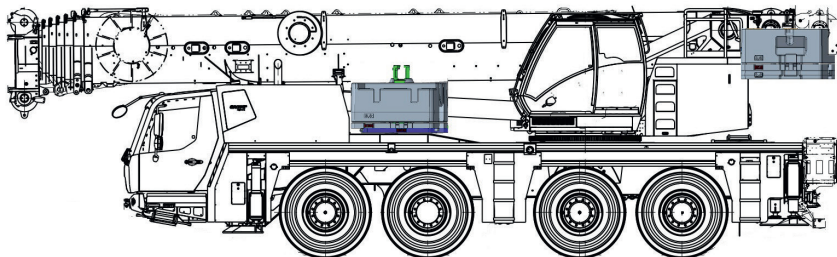
For pricing and lead time, please contact your local dealer or the Lift Solutions Team with specific product requirements.

HEAVY AXLE LOADS

LSAT1034

Description

On industrial construction sites, the crane can carry a counterweight of up to 18,8 t.



Existing Models

GMK4100L-2

Notes

For pricing and lead time, please contact your local dealer or the Lift Solutions Team with specific product requirements.

SPECIAL DRIVING CONDITION GMK6300L-1

LSAT1035

Description

Driving 10 t per axle without boom and lifted second axle.



Existing Models

GMK6300L-1

Notes

For pricing and lead time, please contact your local dealer or the Lift Solutions Team with specific product requirements.

SPECIAL DRIVING CONDITION GMK5250XL-1

LSAT1036

Description

Driving without boom and turned superstructure to rear. Total weight 40 t.



Existing Models

GMK5250XL-1

Notes

For pricing and lead time, please contact your local dealer or the Lift Solutions Team with specific product requirements.

Description

Bio-Hydraulic Oil is a fully synthetic, quickly biodegradable hydraulic- and circulation oil based on synthetic esters. Due to its quick biodegradability it does not pollute the soil or the water.



Existing Models

All GMK's

Notes

For pricing and lead time, please contact your local dealer or the Lift Solutions Team with specific product requirements.

Manitowoc Cranes

Regional headquarters

Americas

Milwaukee, Wisconsin, USA

Tel: +1 414 760 4600

Shady Grove, Pennsylvania, USA

Tel: +1 717 597 8121

Europe and Africa

Dardilly, France - TOWERS

Tel: +33 (0)4 72 18 20 20

Wilhelmshaven, Germany - MOBILE

Tel: +49 (0) 4421 294 0

APAC

Shanghai, China

Tel: +86 21 6457 0066

Singapore

Tel: +65 6264 1188

Middle East and India

Dubai, UAE

Tel: +971 4 8862677

This document is non-contractual. Constant improvement and engineering progress make it necessary that we reserve the right to make specification, equipment, and price changes without notice. Illustrations shown may include optional equipment and accessories and may not include all standard equipment.