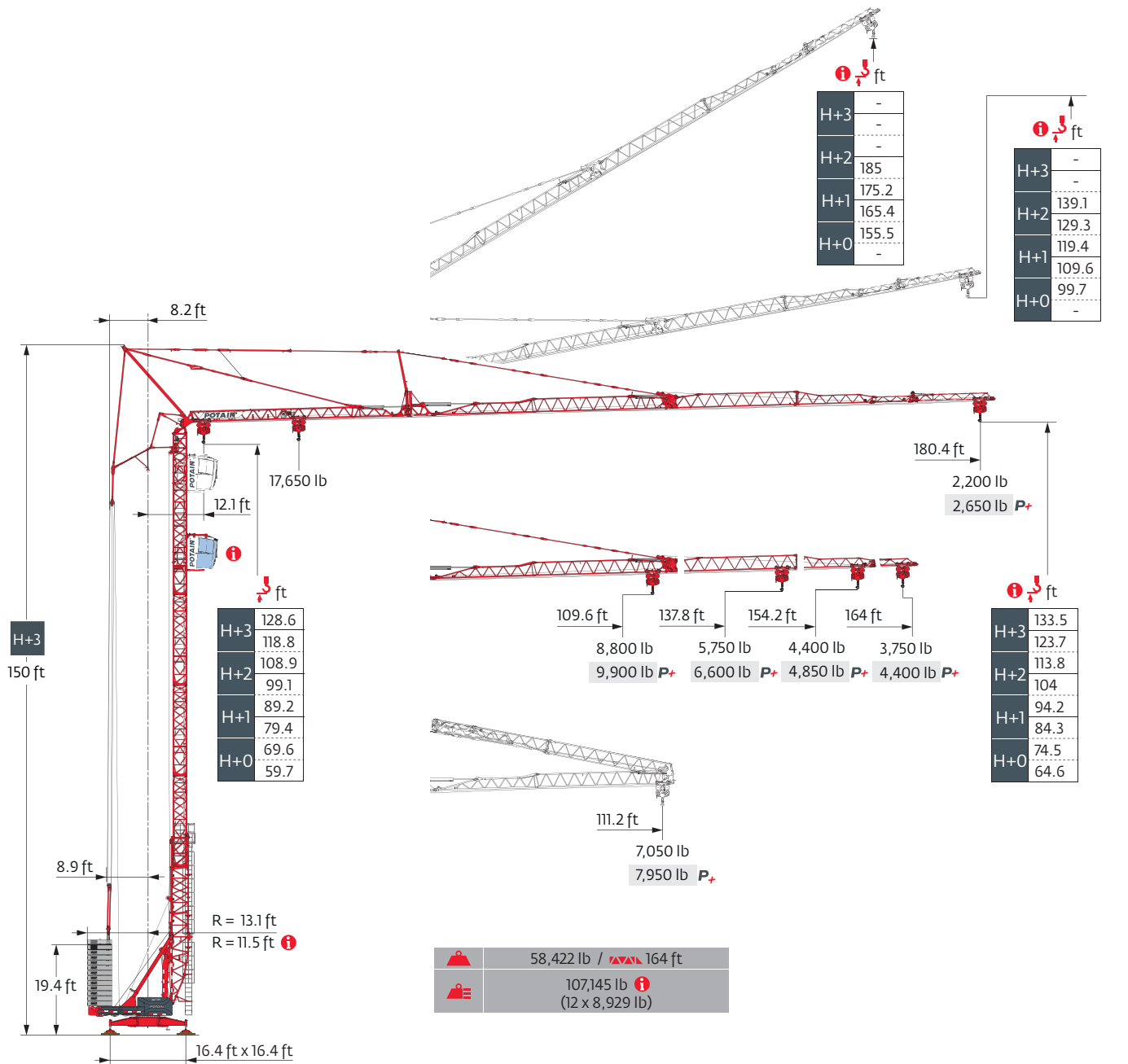
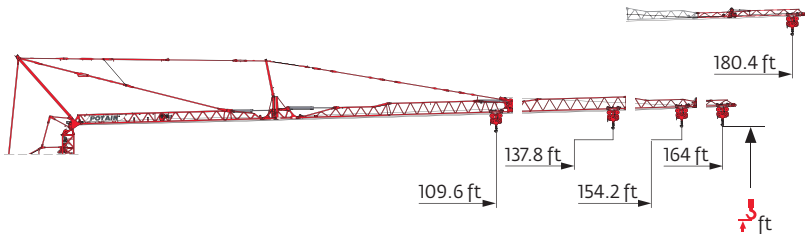


Igo T 139



- Smart Set-up
- Drive Control
- Power Control
- Potain Plus
- Top Site
- Top Tracing 3

Load curves

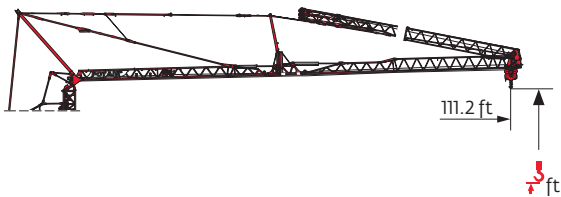


ft	110	138	154	164	180
H+3	131.2	131.9	132.5	132.9	133.5
	121.4	122	122.7	123	123.7
H+2	111.5	112.2	112.9	113.2	113.8
	101.7	102.4	103	103.3	104
H+1	91.9	92.5	93.2	93.5	94.2
	82	82.7	83.3	83.7	84.3
H+0	72.2	72.8	73.5	73.8	74.5
	62.3	63	63.6	64	64.6

4	i
3	i
2	
1	

ft	17,650 lb	33	46	59	66	72	79	85	92	98	105	109.6	112	118	125	131	137.8	144	154.2	158	164	171	180.4	ft
180	12.1 → 32.8	17,650	12,200	9,200	8,150	7,300	6,600	6,000	5,500	5,050	4,650	-	4,300	4,000	3,700	3,450	3,250	3,050	2,800	2,700	2,550	2,400	2,200	lb
	12.1 → 32.8	17,650	12,750	9,900	8,850	8,000	7,300	6,700	6,150	5,700	5,250	-	4,900	4,600	4,300	4,050	3,800	3,550	3,300	3,200	3,000	2,850	2,650	lb P+
164	12.1 → 42.7	17,650	16,300	12,450	11,100	10,000	9,050	8,250	7,600	7,000	6,500	-	6,050	5,650	5,300	4,950	4,700	4,400	4,050	3,950	3,750	-	-	lb
	12.1 → 42.7	17,650	16,500	13,050	11,800	10,750	9,850	9,100	8,400	7,850	7,300	-	6,850	6,450	6,050	5,700	5,400	5,150	4,750	4,650	4,400	-	-	lb P+
154	12.1 → 45.9	17,650	17,650	13,450	11,950	10,750	9,750	8,950	8,200	7,600	7,050	-	6,550	6,100	5,750	5,400	5,100	4,800	4,400	-	-	-	-	lb
	12.1 → 45.9	17,650	17,650	13,800	12,400	11,250	10,250	9,450	8,700	8,100	7,550	-	7,050	6,600	6,200	5,850	5,550	5,250	4,850	-	-	-	-	lb P+
138	12.1 → 49.2	17,650	17,650	14,600	13,100	11,850	10,750	9,850	9,100	8,450	7,850	-	7,350	6,850	6,450	6,050	5,750	-	-	-	-	-	-	lb
	12.1 → 49.2	17,650	17,650	15,100	13,750	12,600	11,600	10,750	10,000	9,350	8,750	-	8,250	7,800	7,350	6,950	6,600	-	-	-	-	-	-	lb P+
110	12.1 → 50.9	17,650	17,650	15,550	14,200	13,050	12,100	11,200	10,450	9,800	9,200	8,800	-	-	-	-	-	-	-	-	-	-	-	lb
	12.1 → 50.9	17,650	17,650	15,950	14,850	13,850	12,950	12,200	11,500	10,850	10,300	9,900	-	-	-	-	-	-	-	-	-	-	-	lb P+

180	12.1 → 29.5	15,950	11,400	8,750	7,800	7,050	6,400	5,800	5,350	4,900	4,550	-	4,250	3,950	3,650	3,450	3,200	3,050	2,750	2,700	2,550	2,400	2,200	lb
	12.1 → 29.5	16,150	12,000	9,450	8,550	7,750	7,050	6,500	6,000	5,550	5,150	-	4,850	4,500	4,250	4,000	3,750	3,550	3,250	3,150	3,000	2,850	2,650	lb P+
164	12.1 → 34.4	17,650	13,700	10,800	9,750	8,850	8,100	7,450	6,900	6,400	5,950	-	5,600	5,250	4,900	4,650	4,350	4,150	3,800	3,700	3,550	-	-	lb
	12.1 → 34.4	17,650	14,200	11,550	10,550	9,700	8,950	8,300	7,750	7,250	6,800	-	6,350	6,000	5,650	5,350	5,100	4,850	4,500	4,400	4,200	-	-	lb P+
154	12.1 → 39	17,650	15,200	11,900	10,750	9,750	8,900	8,200	7,550	7,050	6,550	-	6,100	5,750	5,400	5,100	4,800	4,550	4,200	-	-	-	-	lb
	12.1 → 39	17,650	15,500	12,550	11,450	10,500	9,700	9,000	8,350	7,800	7,300	-	6,900	6,500	6,100	5,800	5,500	5,200	4,850	-	-	-	-	lb P+
138	12.1 → 44.3	17,650	17,050	13,450	12,150	11,050	10,100	9,300	8,600	8,000	7,450	-	7,000	6,550	6,200	5,850	5,500	-	-	-	-	-	-	lb
	12.1 → 44.3	17,650	17,150	14,050	12,900	11,850	11,000	10,200	9,550	8,950	8,400	-	7,900	7,500	7,100	6,700	6,400	-	-	-	-	-	-	lb P+
110	12.1 → 50.9	17,650	17,650	15,550	14,200	13,050	12,100	11,200	10,450	9,800	9,200	8,800	-	-	-	-	-	-	-	-	-	-	-	lb
	12.1 → 50.9	17,650	17,650	15,950	14,850	13,850	12,950	12,200	11,500	10,850	10,300	9,900	-	-	-	-	-	-	-	-	-	-	-	lb P+



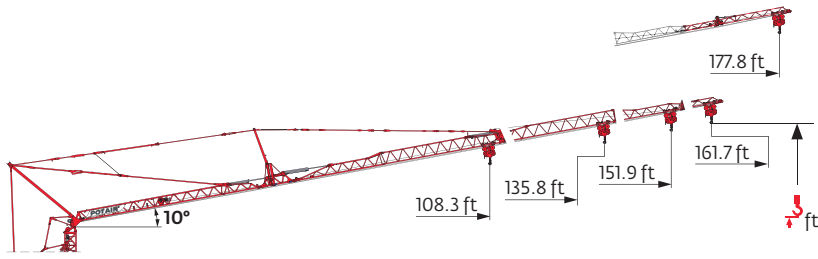
ft	138	154	164	180
H+3		131.2		
		121.4		
H+2		111.5		
		101.7		
H+1		91.9		
		82		
H+0		72.2		
		62.3		

4	i
3	i
2	
1	

ft	17,650 lb	33	46	59	66	72	79	85	92	98	105	111.2	ft
180 - 164 - 154 - 138	12.1 → 45.9	17,650	17,650	13,750	12,400	11,250	10,250	9,400	8,700	8,050	7,500	7,050	lb
	12.1 → 45.9	17,650	17,650	14,300	13,050	12,000	11,100	10,300	9,600	8,950	8,400	7,950	lb P+

180 - 164 - 154 - 138	12.1 → 41	17,650	16,000	12,800	11,600	10,600	9,750	9,000	8,350	7,750	7,250	6,850	lb
	12.1 → 41	17,650	16,250	13,450	12,350	11,400	10,600	9,850	9,250	8,650	8,150	7,700	lb P+

Jib raised to 10°



ft		110	138	154	164	180	
ft	H+3	-	-	-	-	-	3
	H+2	126	130.9	134.2	135.8	139.1	2
	H+1	106.3	111.2	114.5	116.1	119.4	1
	H+0	86.6	91.5	94.8	96.5	99.7	

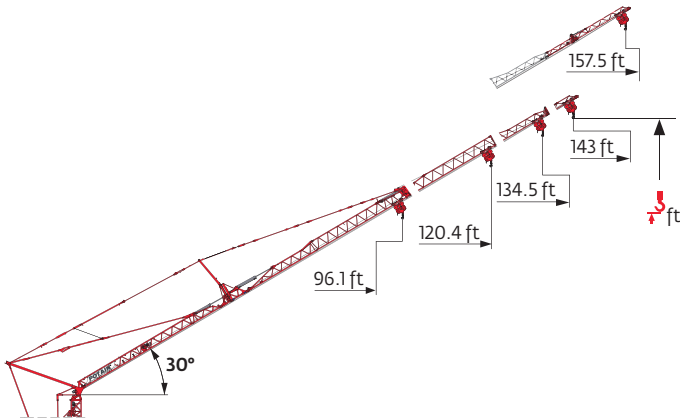
ft		2,850 lb	ft																				
1 2	180	12.1 → 131.2	2,850	2,850	2,850	2,850	2,850	2,850	2,850	2,850	-	2,650	2,500	2,300	-	2,160	-	2,020	1,890	1,770	1,760	lb	
	164	12.1 → 161.7	2,850	2,850	2,850	2,850	2,850	2,850	2,850	2,850	2,850	2,850	2,850	2,850	2,850	2,850	2,850	2,850	2,850	2,850	2,850	2,850	lb
	154	12.1 → 151.9	2,850	2,850	2,850	2,850	2,850	2,850	2,850	2,850	2,850	2,850	2,850	2,850	2,850	2,850	2,850	2,850	2,850	2,850	2,850	2,850	lb
	138	12.1 → 135.8	2,850	2,850	2,850	2,850	2,850	2,850	2,850	2,850	2,850	2,850	2,850	2,850	2,850	2,850	2,850	2,850	2,850	2,850	2,850	2,850	lb
	110	12.1 → 108.3	2,850	2,850	2,850	2,850	2,850	2,850	2,850	2,850	2,850	2,850	2,850	2,850	2,850	2,850	2,850	2,850	2,850	2,850	2,850	2,850	lb



ft		138	154	164	180	
ft	H+3	-	-	-	-	3
	H+2	-	126.3	-	-	2
	H+1	-	116.5	-	-	1
	H+0	-	106.6	-	-	

ft		2,850 lb	ft				
1 2	180 - 164 - 154 - 138	12.1 → 109.9	2,850	2,850	2,850	2,850	lb

Jib raised to 30°

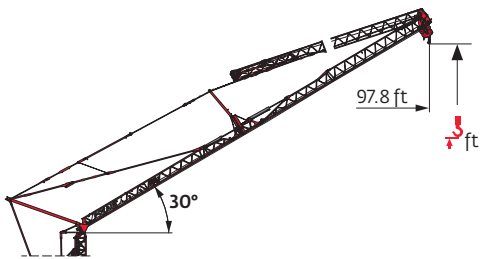


ft		110	138	154	164	180
ft	H+3	-	-	-	-	-
	H+2	-	182.7	191.3	-	-
	H+1	149	163.1	171.6	176.5	185
	H+0	129.3	143.4	151.9	156.8	165.4
ft		-	-	-	-	-

3
2
1

ft	8,800 lb	53	59	66	72	79	85	92	96.1	98	105	112	118	120.4	125	131	134.5	138	143	144	151	157.5	ft
180	12.1 → 52.5	8,800	7,750	6,850	6,150	5,550	5,000	4,600	-	4,200	3,850	3,600	3,300	-	3,100	2,850	2,800	2,700	-	2,500	2,350	2,200	lb
164	12.1 → 68.9	8,800	8,800	8,800	8,400	7,600	6,950	6,400	-	5,900	5,500	5,100	4,750	-	4,450	4,200	4,050	3,950	3,750	lb			
154	12.1 → 72.2	8,800	8,800	8,800	8,800	8,050	7,400	6,800	-	6,350	5,900	5,500	5,150	-	4,850	4,550	4,400	lb					
138	12.1 → 82	8,800	8,800	8,800	8,800	8,800	8,450	7,800	-	7,200	6,700	6,250	5,850	5,750	lb								
110	12.1 → 96.1	8,800	8,800	8,800	8,800	8,800	8,800	8,800	8,800	lb													

180	12.1 → 52.5	8,800	7,750	6,850	6,150	5,550	5,000	4,600	-	4,200	3,850	3,600	3,300	-	3,100	2,850	2,800	2,700	-	2,500	2,350	2,200	lb
164	12.1 → 67.3	8,800	8,800	8,800	8,150	7,350	6,700	6,150	-	5,650	5,250	4,850	4,500	-	4,200	3,950	3,850	3,700	3,550	lb			
154	12.1 → 70.5	8,800	8,800	8,800	8,600	7,800	7,150	6,600	-	6,100	5,650	5,250	4,900	-	4,600	4,300	4,200	lb					
138	12.1 → 78.7	8,800	8,800	8,800	8,800	8,800	8,100	7,450	-	6,900	6,450	6,000	5,650	5,500	lb								
110	12.1 → 96.1	8,800	8,800	8,800	8,800	8,800	8,800	8,800	8,800	lb													



ft		138	154	164	180
ft	H+3	-	-	-	-
	H+2	-	-	-	-
	H+1	-	149.9	140.1	130.2
	H+0	-	120.4	-	-




2
1

ft	8,800 lb	66	72	79	85	92	97.8	ft
180 - 164 - 154 - 138	12.1 → 78.7	8,800	8,800	8,800	8,150	7,550	7,050	lb
180 - 164 - 154 - 138	12.1 → 75.5	8,800	8,800	8,450	7,850	7,300	6,850	lb

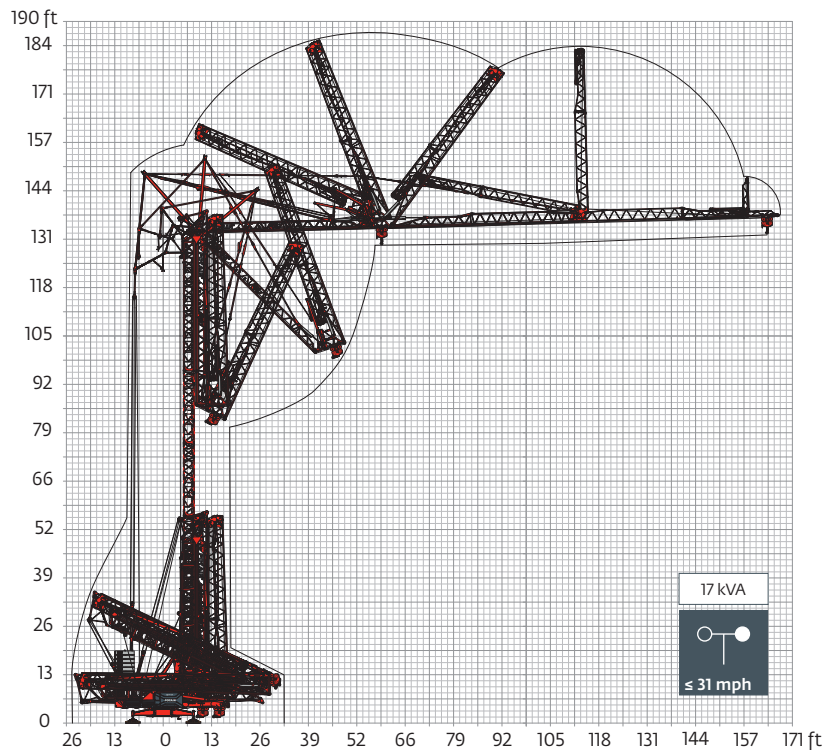
Mechanisms

480 V - 60 Hz		UU (ZAV) 10°							UU (ZAV) 10°			hp	kW
↑	25 HPL™ 20	fpm	5	38	49	74	115	167	5	136	167	25	18
		lb	17,637	17,637	13,228	8,818	4,409	1,102	2,866	2,866	1,102		
↔	5 DVF 5 Optima	fpm	48	128	180	230			48	128	180	5.5	4
		lb	17,637	17,637	4,409	441			2,866	2,866	441		
↻	HPS 162	rpm	0 → 0,8									2 x 7.5	2 x 5.5

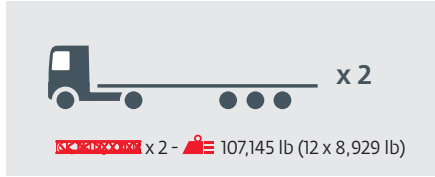
480 V - 60 Hz		UU (ZAV) 30°					hp	kW	
↑	25 HPL™ 20	fpm	10	74	97	138	200	25	18
		lb	8,818	8,818	6,614	4,409	2,205		
↔	5 DVF 5 Optima	fpm	48	95	95	95	95	5.5	4
		lb	8,818	8,818	6,614	4,409	2,205		
↻	HPS 162	rpm	0 → 0.8					2 x 7.5	2 x 5.5

IEC 60204-32	kVA
480 V (+6% -10%) 60 Hz	 32 → 23 kVA  36 → 26 kVA 

Erection



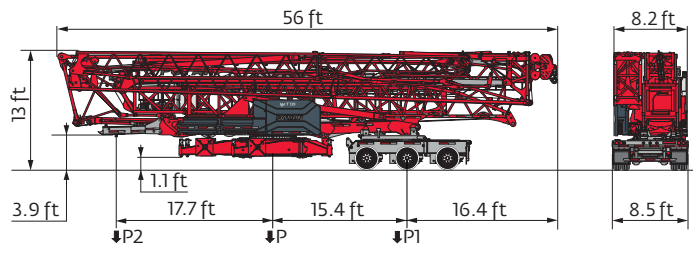
Transport



Dimensions and weight













Description		L (ft)	W (ft)	H (ft)	lb (+/- 5%)	
	Extension mast	19.7	3	3.1	2,534	
	180 ft jib option	154 ft --> 180 ft	26.5	3.3	3.2	970
	Cab	Ultra View	10	5.5	8.2	1,929
	Ballast slab		14.4	5.3	1.7	8,929
	Fifth wheel adaptor kit	SL122	7.2	7.6	2	798
	Transport axle 31 mph		14	8.6	3.7	9,259
	Rear adaptation kit	Kit 213	7.6	6.1	2.1	933


Road transport



	mph	P (lb)	P1 (lb)	P2 (lb)
North America Highway Axle	31	69,479	44,725	24,754

The reactions meet the EN 14439 and ASCE 7-10 specifications for "out of service" wind conditions, provided the illustrated wind speed matches required design wind speed for the location of the tower crane. The "out of service" design wind speed was determined in accordance with ASCE 7-10, Figure 26.5-1A. The wind velocity, used for this configuration was 98 mph (158 kph), which represents a nominal design 3-second wind gust at 33 ft (10 m) above ground for Exposure B category. A factor of 0.85 was applied to the 700-year ultimate design wind speed of 115 mph (185 kph), per ASCE 37-02, with the assumption that this crane is considered a temporary structure used during a construction period of 2 years or less.

- | | | |
|--|--|---|
|  Rear slewing radius |  Standard equipment |  Required power |
|  Consult us |  Options |  Power Control Function: winch speeds adapted to the available power |
|  Weight without load, without ballast, without transport axles, with max. jib and standard height |  Hoisting | |
|  Total ballast weight |  Trolleying | |
|  Potain Plus function: Plus load curves |  Slewing | |

 Hook heights given with plated pulley block
 This commercial document is not legally binding
 For any technical information, please refer to the corresponding instructions

