

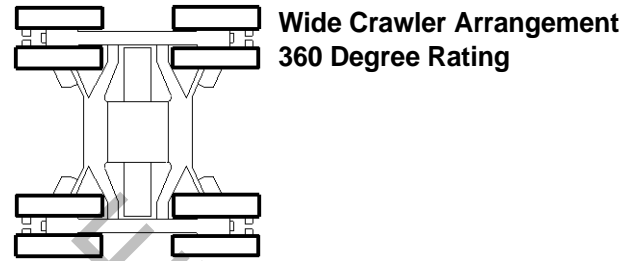
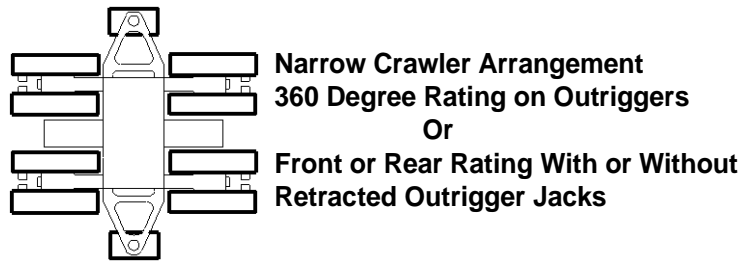
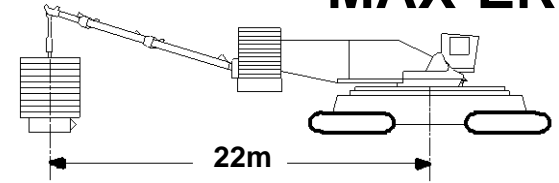


Liftcrane Boom Capacities

Boom No. 80 with 42.7m Mast No. 81
208 060 kg Crane Counterweight
90 720 kg Carbody Counterweight
0 kg Thru 511 330 kg Hanging Counterweight
at 22m Position
Narrow or Wide Crawler Arrangement - 360 Degree Rating

Meets
ANSI B30.5
Requirements

**21000
MAX-ER**



LIFTING CAPACITIES: Lifting capacities for various boom lengths and operating radii are for freely suspended loads and do not exceed 75% of a static tipping load. Capacities based on structural competence are denoted by an asterisk (*). **360 degree operation requires set outrigger jacks for narrow crawler arrangement.**

Hanging counterweight must be attached to support beam and MAX-ER mode must be selected to operate. Minimum boom capacity to raise hanging counterweight free of ground support is required for swing and travel. Do not allow hanging counterweight to contact ground while swinging and traveling. Exit MAX-ER mode before operating without hanging counterweight.

Capacities above 544 300 kg require tandem lower boom points. 97.5m thru 115.8m boom lengths require only the single lower boom point (15 sheaves) to be used. Second lower boom point must be removed and single lower boom point repositioned to center of boom on 97.5m thru 115.8m boom lengths.

Simultaneous hoisting of both load drums is required for even block travel.

Upper boom point capacity for liftcrane service with single part whip line is 22 130 kg or 44 270 kg with two part whip line. In all cases, upper boom point capacities cannot exceed those listed for main boom capacity.

Minimum boom operating angle is 36 degrees when drum 2 lead line is reeved over upper sheave in boom top wire rope guide.

Weight of all load blocks, hooks, weight ball, slings, hoist lines, etc. beneath boom point sheaves is considered part of main boom load. Boom is not to be lowered beyond radii where combined weights are greater than rated capacity. Where no capacity is shown, operation is not intended or approved.

OPERATING CONDITIONS

General: Machine to operate in a level position on a firm uniformly supporting surface with gantry in intermediate position and mast up. Refer to boom rigging **No. 194413** and Wire Rope Specification chart **No. 8168-A**. Crane operator judgment must be used to allow for dynamic load effects of swinging, hoisting or lowering, travel, wind conditions, as well as adverse operating conditions and physical machine depreciation. Refer to operators manual for operating guidelines.

Narrow Crawler Arrangement: Narrow crawler arrangement (9.1m) requires outriggers with jacks set for 360 degree operation (no travel). Refer to operators manual for jacking instructions. Operation restricted to limited swing over front or rear with outrigger jacks retracted or outriggers removed. Refer to Operating Range Diagram chart **No. 8141-A**.

Wide Crawler Arrangement: Operation with wide crawler arrangement (14.5m) is 360 degrees.

MACHINE TRAVEL

General: Machine to travel on a firm, level, and uniformly supporting surface and boom within boom angle range shown in capacity chart. Refer to Swing and Travel Specification chart **No. 8169-A**.

Narrow Crawler Arrangement: Narrow crawler arrangement (9.1m) travel allowed only with upperworks centered over front or rear of lowerworks (no swing) with outrigger jacks retracted or outriggers removed.

Wide Crawler Arrangement: Wide crawler arrangement (14.5m) travel allowed with 360 degree rating.

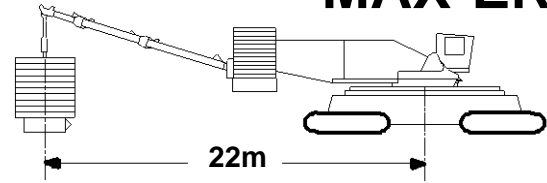


Liftcrane Boom Capacities

Boom No. 80 with 42.7m Mast No. 81
208 060 kg Crane Counterweight
90 720 kg Carbody Counterweight
0 kg Thru 511 330 kg Hanging Counterweight
at 22m Position
Narrow or Wide Crawler Arrangement - 360 Degree Rating

Meets
ANSI B30.5
Requirements

21000
MAX-ER



OPERATING RADIUS: Operating radius is horizontal distance from axis of rotation to center of vertical hoist line or load block. Boom angle is angle between horizontal and centerline of boom butt and inserts, and is an indication of operating radius. In all cases, operating radius shall govern capacity.

BOOM POINT ELEVATION: Boom point elevation is vertical distance from ground level to centerline of boom point shaft.

MACHINE EQUIPMENT: Machine equipped with MAX-ER, lowerworks carbody beams, outriggers, eight 4 978 mm crawlers, 1 219 mm treads, 42.7m mast, 8 534 mm

retractable gantry, 20 part boom hoist reeving, boom support straps, 208 060 kg crane counterweight, two 24 270 kg and two 21 090 kg carbody counterweights and hanging counterweight as specified.

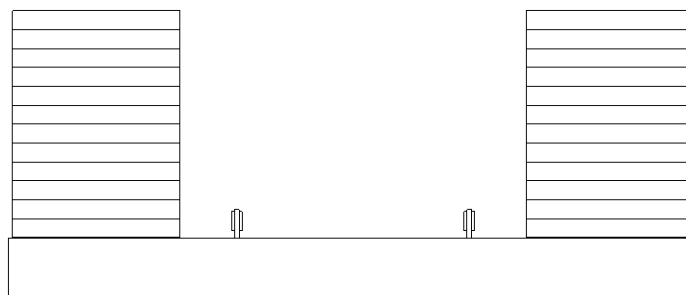
Warning: Front carbody platform must be removed when raising or lowering boom.

Warning: Narrow crawler arrangement requires set outrigger jacks to swing beyond front or rear operating range.

Machine may tip over side with outrigger jacks retracted or removed. Refer to wind folio for restrictions.

WITH OR WITHOUT BOOM CATWALKS	
Maximum Boom Length Lifted Unassisted	
With 0 kg Hanging Counterweight	
Over End of Blocked Crawlers	Over End of Unblocked Crawlers
109.7m	103.6m
With 112 170 kg - 511 330 kg Hanging Counterweight	
Over End of Unblocked Crawlers	
115.8m	
Load block, hook and weight ball on ground at start.	

Warning: Check amount of crane counterweight and hanging counterweight on machine before use of this chart. Refer to Counterweight Assemblies.



208 060 kg Crane Counterweight
24 Side Boxes

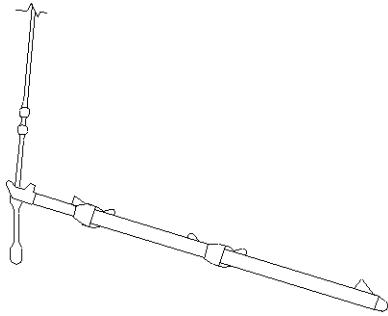
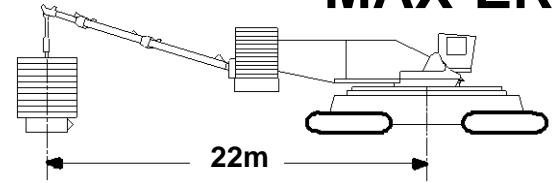


Liftcrane Boom Capacities

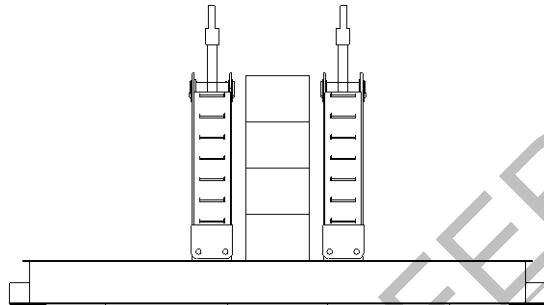
Boom No. 80 with 42.7m Mast No. 81
208 060 kg Crane Counterweight
90 720 kg Carbody Counterweight
0 kg Thru 511 330 kg Hanging Counterweight
at 22m Position
Narrow or Wide Crawler Arrangement - 360 Degree Rating

Meets
ANSI B30.5
Requirements

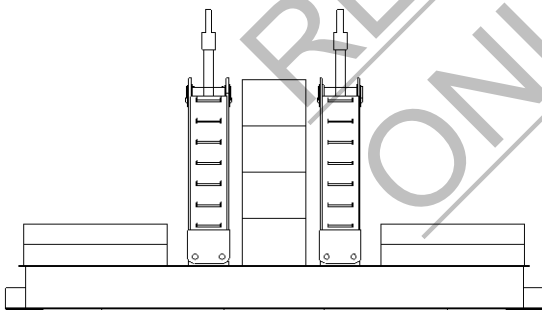
**21000
MAX-ER**



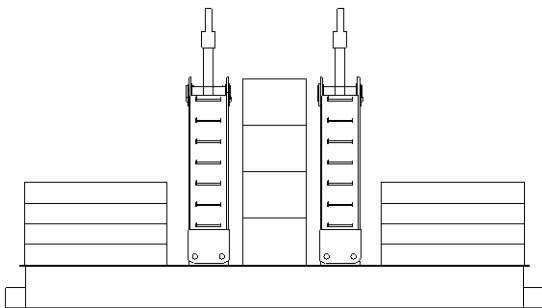
0 kg Hanging Counterweight



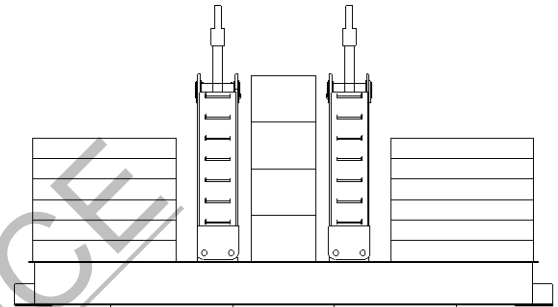
112 170 kg Hanging Counterweight
4 Center Boxes



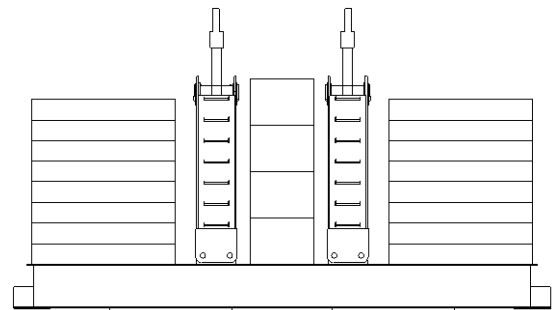
192 010 kg Hanging Counterweight
4 Side Boxes - 4 Center Boxes



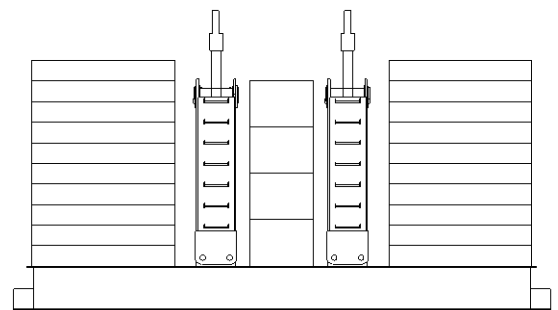
271 840 kg Hanging Counterweight
8 Side Boxes - 4 Center Boxes



351 670 kg Hanging Counterweight
12 Side Boxes - 4 Center Boxes



431 500 kg Hanging Counterweight
16 Side Boxes - 4 Center Boxes



511 330 kg Hanging Counterweight
20 Side Boxes - 4 Center Boxes

REFERENCE ONLY!

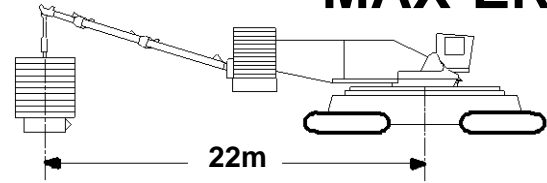


Liftcrane Boom Capacities

Boom No. 80 with 42.7m Mast No. 81
 208 060 kg Crane Counterweight
 90 720 kg Carbody Counterweight
 0 kg Thru 511 330 kg Hanging Counterweight
 at 22m Position
 Narrow or Wide Crawler Arrangement - 360 Degree Rating

Meets
ANSI B30.5
Requirements

**21000
MAX-ER**



42.7m (140 Ft.) Boom

Oper. Rad. m	Boom Ang. Deg.	Boom Point Elev. m	0 kg Hanging Counterweight	112 170 kg Hanging Counterweight		192 010 kg Hanging Counterweight		Oper. Rad. m
			Boom Capacity Kilograms	Minimum Boom Capacity To Swing and Travel Kilograms	Boom Capacity Kilograms	Minimum Boom Capacity To Swing and Travel Kilograms	Boom Capacity Kilograms	
8.5	82.7	45.3	632 600*	579 700	833 500*			8.5
9.0	82.1	45.3	601 200*	537 500	792 600*			9.0
10.0	80.7	45.1	541 600*	461 400	715 000*	698 000	834 400*	10.0
11.0	79.3	44.9	492 600*	403 500	651 300*	613 100	760 200*	11.0
12.0	78.0	44.6	451 200*	357 400	597 400*	545 400	697 800*	12.0
14.0	75.2	44.1	385 300*	288 600	511 600*	444 500	598 400*	14.0
16.0	72.3	43.4	335 100*	239 800	446 300*	372 900	522 700*	16.0
18.0	69.5	42.7	294 000*	203 400	395 100*	319 600	463 300*	18.0
20.0	66.5	41.8	259 700*	175 200	353 700*	278 300	415 300*	20.0
22.0	63.5	40.8	232 000*	152 600	319 500*	245 200	375 700*	22.0
24.0	60.4	39.6	209 000*	134 200	290 800*	218 100	342 400*	24.0
26.0	57.2	38.3	189 700*	118 800	266 400*	195 700	314 200*	26.0
28.0	53.9	36.9	173 200*	105 800	245 300*	176 600	289 800*	28.0
30.0	50.4	35.2	158 800*	94 600	226 800*	160 200	268 600*	30.0
32.0	46.7	33.3	146 400*	84 800	210 000*	146 100	250 000*	32.0
34.0	42.8	31.2	135 400*	76 300	195 200*	133 600	233 500*	34.0
36.0	38.5	28.7	125 600*	68 700	182 000*	122 600	218 700*	36.0
38.0	33.7	25.7	116 800*	61 900	170 200*	112 700	205 500*	38.0

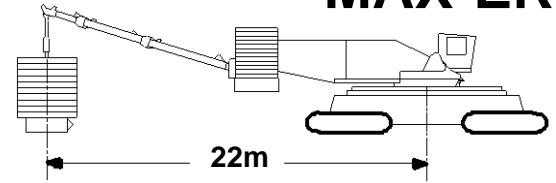


Liftcrane Boom Capacities

Boom No. 80 with 42.7m Mast No. 81
208 060 kg Crane Counterweight
90 720 kg Carbody Counterweight
0 kg Thru 511 330 kg Hanging Counterweight
at 22m Position
Narrow or Wide Crawler Arrangement - 360 Degree Rating

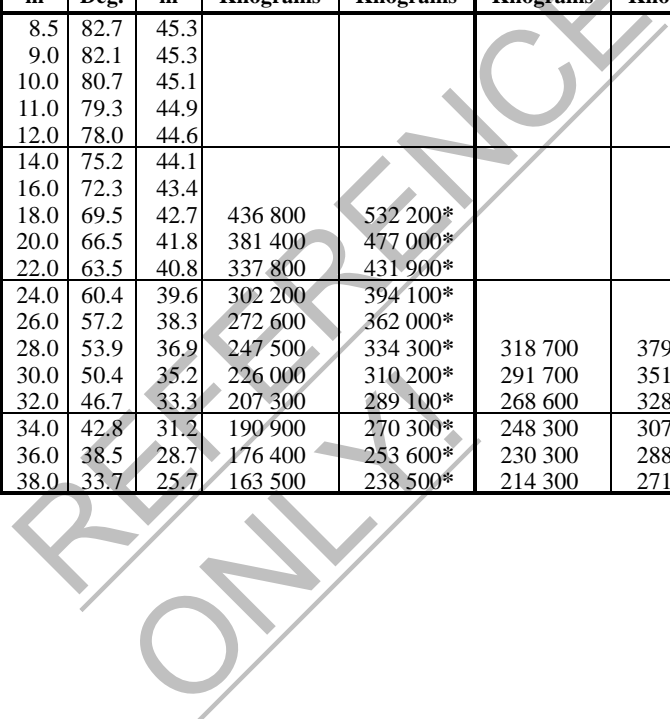
Meets
ANSI B30.5
Requirements

**21000
MAX-ER**



42.7m (140 Ft.) Boom

Oper. Rad. m	Boom Ang. Deg.	Boom Point Elev. m	271 840 kg Hanging Counterweight		351 670 kg Hanging Counterweight		Oper. Rad. m
			Minimum Boom Capacity To Swing and Travel Kilograms	Boom Capacity Kilograms	Minimum Boom Capacity To Swing and Travel Kilograms	Boom Capacity Kilograms	
8.5	82.7	45.3					8.5
9.0	82.1	45.3					9.0
10.0	80.7	45.1					10.0
11.0	79.3	44.9					11.0
12.0	78.0	44.6					12.0
14.0	75.2	44.1					14.0
16.0	72.3	43.4					16.0
18.0	69.5	42.7	436 800	532 200*			18.0
20.0	66.5	41.8	381 400	477 000*			20.0
22.0	63.5	40.8	337 800	431 900*			22.0
24.0	60.4	39.6	302 200	394 100*			24.0
26.0	57.2	38.3	272 600	362 000*			26.0
28.0	53.9	36.9	247 500	334 300*	318 700	379 100*	28.0
30.0	50.4	35.2	226 000	310 200*	291 700	351 800*	30.0
32.0	46.7	33.3	207 300	289 100*	268 600	328 100*	32.0
34.0	42.8	31.2	190 900	270 300*	248 300	307 100*	34.0
36.0	38.5	28.7	176 400	253 600*	230 300	288 300*	36.0
38.0	33.7	25.7	163 500	238 500*	214 300	271 500*	38.0



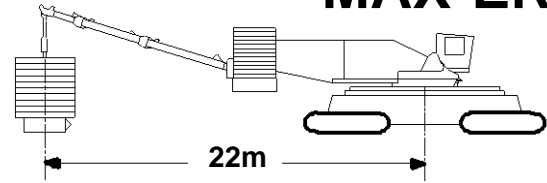


Liftcrane Boom Capacities

Boom No. 80 with 42.7m Mast No. 81
 208 060 kg Crane Counterweight
 90 720 kg Carbody Counterweight
 0 kg Thru 511 330 kg Hanging Counterweight
 at 22m Position
 Narrow or Wide Crawler Arrangement - 360 Degree Rating

Meets
ANSI B30.5
Requirements

**21000
MAX-ER**



48.8m (160 Ft.) Boom

Oper. Rad. m	Boom Ang. Deg.	Boom Point Elev. m	0 kg Hanging Counterweight	112 170 kg Hanging Counterweight		192 010 kg Hanging Counterweight		Oper. Rad. m
			Boom Capacity Kilograms	Minimum Boom Capacity To Swing and Travel Kilograms	Boom Capacity Kilograms	Minimum Boom Capacity To Swing and Travel Kilograms	Boom Capacity Kilograms	
9.1	82.9	51.4	588 800*	528 600	777 300*			9.1
10.0	81.9	51.3	539 000*	464 200	712 400*	704 600	832 200*	10.0
11.0	80.7	51.1	490 000*	405 300	648 700*	616 900	757 600*	11.0
12.0	79.5	50.9	448 700*	358 400	594 900*	548 000	695 300*	12.0
14.0	77.1	50.4	382 800*	288 600	509 200*	445 700	595 900*	14.0
16.0	74.6	49.9	332 700*	239 100	443 900*	373 200	520 300*	16.0
18.0	72.2	49.2	291 800*	202 400	392 700*	319 300	460 900*	18.0
20.0	69.6	48.4	257 600*	173 900	351 400*	277 600	413 000*	20.0
22.0	67.1	47.6	229 900*	151 100	317 200*	244 200	373 400*	22.0
24.0	64.5	46.6	206 900*	132 500	288 500*	217 000	340 200*	24.0
26.0	61.8	45.5	187 600*	117 000	264 200*	194 300	312 000*	26.0
28.0	59.1	44.3	171 100*	104 000	243 200*	175 100	287 600*	28.0
30.0	56.2	43.0	156 900*	92 700	224 700*	158 700	266 500*	30.0
32.0	53.3	41.5	144 400*	83 000	208 000*	144 500	247 900*	32.0
34.0	50.2	39.8	133 400*	74 400	193 200*	132 000	231 400*	34.0
36.0	47.0	37.9	123 600*	66 900	180 100*	121 000	216 700*	36.0
38.0	43.6	35.8	114 900*	60 100	168 300*	111 200	203 500*	38.0
40.0	40.0	33.5	107 100*	54 100	157 700*	102 400	191 600*	40.0
42.0	36.0	30.7	100 000*	48 600	148 200*	94 400	180 700*	42.0
44.0	31.6	27.6	93 400*	43 600	139 500*	87 100	170 800*	44.0

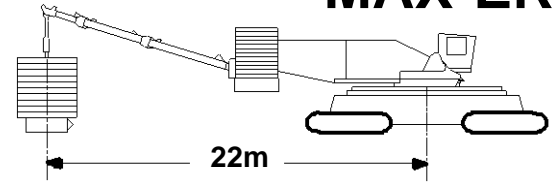


Liftcrane Boom Capacities

Boom No. 80 with 42.7m Mast No. 81
208 060 kg Crane Counterweight
90 720 kg Carbody Counterweight
0 kg Thru 511 330 kg Hanging Counterweight
at 22m Position
Narrow or Wide Crawler Arrangement - 360 Degree Rating

Meets
ANSI B30.5
Requirements

**21000
MAX-ER**



48.8m (160 Ft.) Boom

Oper. Rad. m	Boom Ang. Deg.	Boom Point Elev. m	271 840 kg Hanging Counterweight		351 670 kg Hanging Counterweight		Oper. Rad. m
			Minimum Boom Capacity To Swing and Travel Kilograms	Boom Capacity Kilograms	Minimum Boom Capacity To Swing and Travel Kilograms	Boom Capacity Kilograms	
9.1	82.9	51.4					9.1
10.0	81.9	51.3					10.0
11.0	80.7	51.1					11.0
12.0	79.5	50.9					12.0
14.0	77.1	50.4					14.0
16.0	74.6	49.9					16.0
18.0	72.2	49.2	437 200	529 800*			18.0
20.0	69.6	48.4	381 300	474 600*			20.0
22.0	67.1	47.6	337 300	429 600*			22.0
24.0	64.5	46.6	301 500	391 900*			24.0
26.0	61.8	45.5	271 700	359 800*			26.0
28.0	59.1	44.3	246 400	332 100*	318 000	376 900*	28.0
30.0	56.2	43.0	224 800	308 100*	290 900	349 700*	30.0
32.0	53.3	41.5	206 100	286 900*	267 700	326 000*	32.0
34.0	50.2	39.8	189 700	268 200*	247 300	305 000*	34.0
36.0	47.0	37.9	175 200	251 500*	229 400	286 300*	36.0
38.0	43.6	35.8	162 300	236 500*	213 400	269 500*	38.0
40.0	40.0	33.5	150 700	222 900*	199 000	254 300*	40.0
42.0	36.0	30.7	140 200	210 600*	186 100	240 600*	42.0
44.0	31.6	27.6	130 700	199 400*	174 300	228 000*	44.0

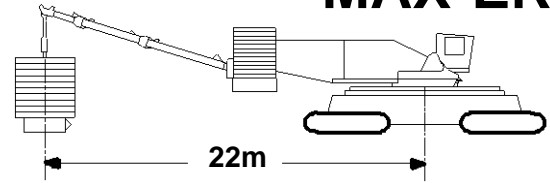


Liftcrane Boom Capacities

Boom No. 80 with 42.7m Mast No. 81
 208 060 kg Crane Counterweight
 90 720 kg Carbody Counterweight
 0 kg Thru 511 330 kg Hanging Counterweight
 at 22m Position
 Narrow or Wide Crawler Arrangement - 360 Degree Rating

Meets
ANSI B30.5
Requirements

**21000
MAX-ER**



54.9m (180 Ft.) Boom

Oper. Rad. m	Boom Ang. Deg.	Boom Point Elev. m	0 kg Hanging Counterweight	112 170 kg Hanging Counterweight		192 010 kg Hanging Counterweight		Oper. Rad. m
			Boom Capacity Kilograms	Minimum Boom Capacity To Swing and Travel Kilograms	Boom Capacity Kilograms	Minimum Boom Capacity To Swing and Travel Kilograms	Boom Capacity Kilograms	
10.4	82.4	57.4	518 500*	444 100	686 300*	674 600	801 500*	10.4
11.0	81.7	57.3	488 300*	407 500	647 000*	621 000	756 000*	11.0
12.0	80.7	57.1	447 100*	359 900	593 300*	551 200	693 700*	12.0
14.0	78.5	56.7	381 200*	289 100	507 600*	447 300	594 300*	14.0
16.0	76.4	56.2	331 100*	239 100	442 300*	374 000	518 700*	16.0
18.0	74.2	55.6	290 300*	202 000	391 100*	319 600	459 400*	18.0
20.0	72.0	55.0	256 100*	173 200	349 800*	277 500	411 400*	20.0
22.0	69.8	54.2	228 400*	150 300	315 600*	243 800	371 800*	22.0
24.0	67.5	53.4	205 500*	131 500	287 000*	216 400	338 700*	24.0
26.0	65.2	52.4	186 200*	116 000	262 700*	193 600	310 400*	26.0
28.0	62.9	51.4	169 700*	102 800	241 700*	174 300	286 100*	28.0
30.0	60.5	50.2	155 400*	91 500	223 300*	157 800	265 000*	30.0
32.0	58.0	49.0	142 900*	81 700	206 600*	143 500	246 400*	32.0
34.0	55.4	47.6	132 000*	73 100	191 800*	131 000	229 900*	34.0
36.0	52.8	46.1	122 300*	65 600	178 700*	119 900	215 300*	36.0
38.0	50.1	44.4	113 500*	58 800	167 000*	110 100	202 100*	38.0
40.0	47.2	42.5	105 700*	52 800	156 400*	101 300	190 200*	40.0
42.0	44.3	40.5	98 600*	47 300	146 900*	93 400	179 400*	42.0
44.0	41.1	38.2	92 200*	42 400	138 200*	86 200	169 500*	44.0
46.0	37.7	35.6	86 300*	37 800	130 300*	79 600	160 500*	46.0
48.0	34.0	32.7	80 900*	33 700	123 000*	73 500	151 900*	48.0
50.0	29.9	29.3	75 900*	29 800	116 300*	68 000	144 000*	50.0

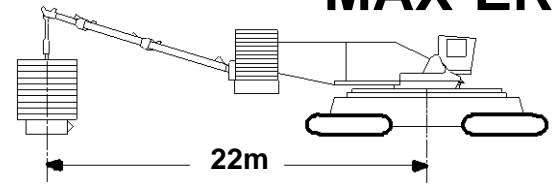


Liftcrane Boom Capacities

Boom No. 80 with 42.7m Mast No. 81
208 060 kg Crane Counterweight
90 720 kg Carbody Counterweight
0 kg Thru 511 330 kg Hanging Counterweight
at 22m Position
Narrow or Wide Crawler Arrangement - 360 Degree Rating

Meets
ANSI B30.5
Requirements

**21000
MAX-ER**



54.9m (180 Ft.) Boom

Oper. Rad. m	Boom Ang. Deg.	Boom Point Elev. m	271 840 kg Hanging Counterweight		351 670 kg Hanging Counterweight		Oper. Rad. m
			Minimum Boom Capacity To Swing and Travel Kilograms	Boom Capacity Kilograms	Minimum Boom Capacity To Swing and Travel Kilograms	Boom Capacity Kilograms	
10.4	82.4	57.4					10.4
11.0	81.7	57.3					11.0
12.0	80.7	57.1					12.0
14.0	78.5	56.7					14.0
16.0	76.4	56.2					16.0
18.0	74.2	55.6	438 200	528 300*			18.0
20.0	72.0	55.0	381 800	473 100*			20.0
22.0	69.8	54.2	337 400	428 100*			22.0
24.0	67.5	53.4	301 300	390 400*			24.0
26.0	65.2	52.4	271 300	358 300*			26.0
28.0	62.9	51.4	245 900	330 600*	317 800	375 400*	28.0
30.0	60.5	50.2	224 200	306 600*	290 500	348 200*	30.0
32.0	58.0	49.0	205 400	285 400*	267 200	324 500*	32.0
34.0	55.4	47.6	188 900	266 700*	246 800	303 500*	34.0
36.0	52.8	46.1	174 400	250 000*	228 800	284 900*	36.0
38.0	50.1	44.4	161 400	235 100*	212 800	268 100*	38.0
40.0	47.2	42.5	149 900	221 500*	198 400	252 900*	40.0
42.0	44.3	40.5	139 400	209 300*	185 500	239 200*	42.0
44.0	41.1	38.2	130 000	198 100*	173 800	226 700*	44.0
46.0	37.7	35.6	121 300	187 900*	163 100	215 200*	46.0
48.0	34.0	32.7	113 400	178 500*	153 300	204 700*	48.0
50.0	29.9	29.3	106 100	169 700*	144 300	194 900*	50.0

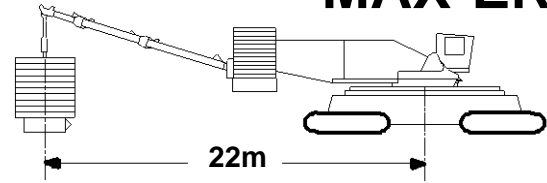


Liftcrane Boom Capacities

Boom No. 80 with 42.7m Mast No. 81
208 060 kg Crane Counterweight
90 720 kg Carbody Counterweight
0 kg Thru 511 330 kg Hanging Counterweight
at 22m Position
Narrow or Wide Crawler Arrangement - 360 Degree Rating

Meets
ANSI B30.5
Requirements

21000
MAX-ER



61.0m (200 Ft.) Boom

Oper. Rad. m	Boom Ang. Deg.	Boom Point Elev. m	0 kg Hanging Counterweight	112 170 kg Hanging Counterweight		192 010 kg Hanging Counterweight		271 840 kg Hanging Counterweight		Oper. Rad. m
			Boom Capacity Kilograms	Minimum Boom Capacity To Swing and Travel Kilograms	Boom Capacity Kilograms	Minimum Boom Capacity To Swing and Travel Kilograms	Boom Capacity Kilograms	Minimum Boom Capacity To Swing and Travel Kilograms	Boom Capacity Kilograms	
11.0	82.6	63.5	488 000*	412 700	647 000*	629 100	756 200*			11.0
12.0	81.6	63.3	445 400*	362 500	591 600*	555 600	692 000*			12.0
14.0	79.7	62.9	379 400*	290 300	505 800*	449 800	592 500*			14.0
16.0	77.8	62.5	329 300*	239 400	440 500*	375 200	516 900*			16.0
18.0	75.8	62.0	288 600*	201 700	389 200*	320 000	457 500*			18.0
20.0	73.9	61.4	254 400*	172 500	347 900*	277 300	409 500*	382 200	471 200*	20.0
22.0	71.9	60.7	226 700*	149 200	313 700*	243 200	369 900*	337 300	426 100*	22.0
24.0	69.9	60.0	203 600*	130 200	285 000*	215 500	336 700*	300 800	388 400*	24.0
26.0	67.9	59.1	184 300*	114 400	260 600*	192 400	308 500*	270 500	356 300*	26.0
28.0	65.8	58.2	167 800*	101 100	239 600*	172 900	284 100*	244 900	328 600*	28.0
30.0	63.7	57.2	153 500*	89 700	221 300*	156 300	262 900*	223 000	304 500*	30.0
32.0	61.5	56.1	141 000*	79 800	204 700*	141 900	244 300*	204 000	283 300*	32.0
34.0	59.4	54.9	130 000*	71 100	189 800*	129 200	227 800*	187 400	264 700*	34.0
36.0	57.1	53.6	120 300*	63 500	176 700*	118 100	213 100*	172 800	248 000*	36.0
38.0	54.8	52.2	111 500*	56 700	165 000*	108 200	200 000*	159 700	233 000*	38.0
40.0	52.4	50.7	103 700*	50 600	154 400*	99 300	188 000*	148 100	219 400*	40.0
42.0	50.0	49.0	96 600*	45 100	144 900*	91 400	177 300*	137 600	207 200*	42.0
44.0	47.4	47.1	90 200*	40 100	136 200*	84 100	167 400*	128 100	196 000*	44.0
46.0	44.8	45.1	84 300*	35 600	128 200*	77 500	158 400*	119 500	185 800*	46.0
48.0	41.9	42.9	78 900*	31 400	121 000*	71 500	149 900*	111 600	176 300*	48.0
50.0	39.0	40.5	73 900*	27 600	114 300*	65 900	142 000*	104 300	167 700*	50.0
52.0	35.8	37.7	69 300*	24 000	108 100*	60 800	134 700*	97 600	159 600*	52.0
54.0	32.3	34.6	65 000*	20 700	102 400*	56 000	128 100*	91 300	152 200*	54.0
56.0	28.4	31.0	61 000*	17 600	97 000*	51 500	121 800*	85 500	145 200*	56.0

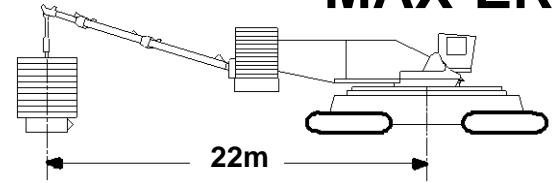


Liftcrane Boom Capacities

Boom No. 80 with 42.7m Mast No. 81
208 060 kg Crane Counterweight
90 720 kg Carbody Counterweight
0 kg Thru 511 330 kg Hanging Counterweight
at 22m Position
Narrow or Wide Crawler Arrangement - 360 Degree Rating

Meets
ANSI B30.5
Requirements

**21000
MAX-ER**



61.0m (200 Ft.) Boom

Oper. Rad. m	Boom Ang. Deg.	Boom Point Elev. m	351 670 kg Hanging Counterweight		431 500 kg Hanging Counterweight		Oper. Rad. m
			Minimum Boom Capacity To Swing and Travel Kilograms	Boom Capacity Kilograms	Minimum Boom Capacity To Swing and Travel Kilograms	Boom Capacity Kilograms	
11.0	82.6	63.5					11.0
12.0	81.6	63.3					12.0
14.0	79.7	62.9					14.0
16.0	77.8	62.5					16.0
18.0	75.8	62.0					18.0
20.0	73.9	61.4					20.0
22.0	71.9	60.7					22.0
24.0	69.9	60.0					24.0
26.0	67.9	59.1					26.0
28.0	65.8	58.2					28.0
30.0	63.7	57.2	289 900	346 300*			30.0
32.0	61.5	56.1	266 100	322 400*			32.0
34.0	59.4	54.9	245 600	301 400*			34.0
36.0	57.1	53.6	227 400	282 700*			36.0
38.0	54.8	52.2	211 300	266 000*			38.0
40.0	52.4	50.7	196 900	250 800*			40.0
42.0	50.0	49.0	183 900	237 100*			42.0
44.0	47.4	47.1	172 200	224 600*			44.0
46.0	44.8	45.1	161 400	213 100*	203 500	240 500*	46.0
48.0	41.9	42.9	151 700	202 600*	191 800	228 800*	48.0
50.0	39.0	40.5	142 700	192 900*	181 100	218 100*	50.0
52.0	35.8	37.7	134 400	183 900*	171 200	208 100*	52.0
54.0	32.3	34.6	126 700	175 500*	162 000	198 900*	54.0
56.0	28.4	31.0	119 500	167 700*	153 500	190 300*	56.0

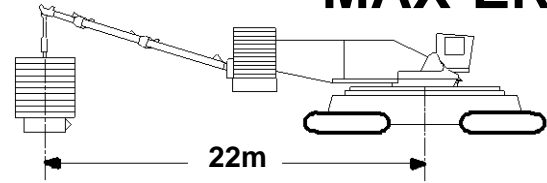


Liftcrane Boom Capacities

Boom No. 80 with 42.7m Mast No. 81
208 060 kg Crane Counterweight
90 720 kg Carbody Counterweight
0 kg Thru 511 330 kg Hanging Counterweight
at 22m Position
Narrow or Wide Crawler Arrangement - 360 Degree Rating

Meets
ANSI B30.5
Requirements

21000
MAX-ER



67.1m (220 Ft.) Boom

Oper. Rad. m	Boom Ang. Deg.	Boom Point Elev. m	0 kg Hanging Counterweight	112 170 kg Hanging Counterweight		192 010 kg Hanging Counterweight		271 840 kg Hanging Counterweight		Oper. Rad. m
			Boom Capacity Kilograms	Minimum Boom Capacity To Swing and Travel Kilograms	Boom Capacity Kilograms	Minimum Boom Capacity To Swing and Travel Kilograms	Boom Capacity Kilograms	Minimum Boom Capacity To Swing and Travel Kilograms	Boom Capacity Kilograms	
11.6	82.7	69.5	460 100*	384 000	611 300*	587 500	715 000*			11.6
12.0	82.4	69.5	443 900*	365 000	590 200*	559 700	690 600*			12.0
14.0	80.6	69.1	377 600*	291 000	504 000*	451 600	590 700*			14.0
16.0	78.9	68.7	327 400*	239 300	438 600*	376 000	515 000*			16.0
18.0	77.2	68.3	286 800*	201 000	387 300*	320 000	455 500*			18.0
20.0	75.4	67.7	252 700*	171 500	345 900*	276 800	407 500*	382 300	469 200*	20.0
22.0	73.6	67.1	224 800*	147 900	311 600*	242 400	367 800*	336 900	424 100*	22.0
24.0	71.8	66.5	201 800*	128 700	283 000*	214 400	334 600*	300 100	386 300*	24.0
26.0	70.0	65.7	182 400*	112 800	258 500*	191 100	306 400*	269 500	354 200*	26.0
28.0	68.1	64.9	165 800*	99 300	237 500*	171 400	282 000*	243 600	326 500*	28.0
30.0	66.3	64.0	151 500*	87 800	219 200*	154 600	260 800*	221 500	302 400*	30.0
32.0	64.4	63.1	139 000*	77 800	202 700*	140 000	242 200*	202 400	281 300*	32.0
34.0	62.4	62.0	128 000*	69 000	187 800*	127 400	225 700*	185 700	262 500*	34.0
36.0	60.5	60.9	118 200*	61 300	174 700*	116 100	211 000*	171 000	245 800*	36.0
38.0	58.5	59.6	109 500*	54 500	162 900*	106 100	197 800*	157 900	230 800*	38.0
40.0	56.4	58.3	101 600*	48 300	152 300*	97 200	185 900*	146 200	217 300*	40.0
42.0	54.3	56.8	94 600*	42 800	142 800*	89 200	175 100*	135 700	205 000*	42.0
44.0	52.1	55.3	88 100*	37 800	134 100*	81 900	165 300*	126 100	193 900*	44.0
46.0	49.9	53.6	82 200*	33 300	126 200*	75 300	156 300*	117 400	183 600*	46.0
48.0	47.6	51.8	76 800*	29 100	118 900*	69 300	147 900*	109 500	174 200*	48.0
50.0	45.2	49.8	71 800*	25 200	112 200*	63 700	140 000*	102 200	165 500*	50.0
52.0	42.6	47.6	67 200*	21 700	106 000*	58 600	132 700*	95 500	157 500*	52.0
54.0	40.0	45.2	63 000*	18 400	100 300*	53 800	126 000*	89 300	150 100*	54.0
56.0	37.2	42.6	59 000*	15 300	95 000*	49 400	119 700*	83 500	143 100*	56.0
58.0	34.2	39.7	55 300*	12 400	90 000*	45 300	113 900*	78 100	136 600*	58.0
60.0	30.9	36.4	51 400*	9 700	85 400*	41 400	108 400*	73 100	130 500*	60.0
62.0	27.2	32.6	47 400*	7 200	81 000*	37 700	103 300*	68 300	124 800*	62.0

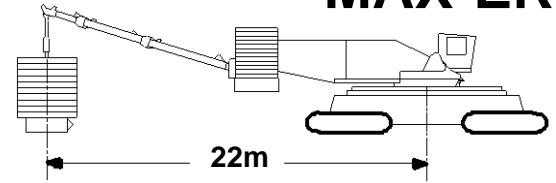


Liftcrane Boom Capacities

Boom No. 80 with 42.7m Mast No. 81
208 060 kg Crane Counterweight
90 720 kg Carbody Counterweight
0 kg Thru 511 330 kg Hanging Counterweight
at 22m Position
Narrow or Wide Crawler Arrangement - 360 Degree Rating

Meets
ANSI B30.5
Requirements

**21000
MAX-ER**



67.1m (220 Ft.) Boom

Oper. Rad. m	Boom Ang. Deg.	Boom Point Elev. m	351 670 kg Hanging Counterweight		431 500 kg Hanging Counterweight		Oper. Rad. m
			Minimum Boom Capacity To Swing and Travel Kilograms	Boom Capacity Kilograms	Minimum Boom Capacity To Swing and Travel Kilograms	Boom Capacity Kilograms	
11.6	82.7	69.5					11.6
12.0	82.4	69.5					12.0
14.0	80.6	69.1					14.0
16.0	78.9	68.7					16.0
18.0	77.2	68.3					18.0
20.0	75.4	67.7					20.0
22.0	73.6	67.1					22.0
24.0	71.8	66.5					24.0
26.0	70.0	65.7					26.0
28.0	68.1	64.9					28.0
30.0	66.3	64.0	288 700	344 200*			30.0
32.0	64.4	63.1	264 800	320 300*			32.0
34.0	62.4	62.0	244 100	299 300*			34.0
36.0	60.5	60.9	225 800	280 600*			36.0
38.0	58.5	59.6	209 600	263 800*			38.0
40.0	56.4	58.3	195 200	248 700*			40.0
42.0	54.3	56.8	182 100	234 900*			42.0
44.0	52.1	55.3	170 300	222 400*			44.0
46.0	49.9	53.6	159 600	211 000*	201 800	238 400*	46.0
48.0	47.6	51.8	149 700	200 400*	190 000	226 700*	48.0
50.0	45.2	49.8	140 700	190 700*	179 300	215 900*	50.0
52.0	42.6	47.6	132 400	181 700*	169 400	206 000*	52.0
54.0	40.0	45.2	124 800	173 400*	160 300	196 800*	54.0
56.0	37.2	42.6	117 600	165 600*	151 800	188 200*	56.0
58.0	34.2	39.7	111 000	158 400*	143 900	180 200*	58.0
60.0	30.9	36.4	104 800	151 600*	136 500	172 700*	60.0
62.0	27.2	32.6	98 900	145 200*	129 500	165 600*	62.0

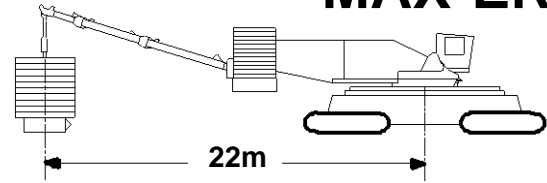


Liftcrane Boom Capacities

Boom No. 80 with 42.7m Mast No. 81
208 060 kg Crane Counterweight
90 720 kg Carbody Counterweight
0 kg Thru 511 330 kg Hanging Counterweight
at 22m Position
Narrow or Wide Crawler Arrangement - 360 Degree Rating

Meets
ANSI B30.5
Requirements

21000
MAX-ER



73.2m (240 Ft.) Boom

Oper. Rad. m	Boom Ang. Deg.	Boom Point Elev. m	0 kg Hanging Counterweight	112 170 kg Hanging Counterweight		192 010 kg Hanging Counterweight		271 840 kg Hanging Counterweight		Oper. Rad. m
			Boom Capacity Kilograms	Minimum Boom Capacity To Swing and Travel Kilograms	Boom Capacity Kilograms	Minimum Boom Capacity To Swing and Travel Kilograms	Boom Capacity Kilograms	Minimum Boom Capacity To Swing and Travel Kilograms	Boom Capacity Kilograms	
12.2	82.9	75.6	435 400*	359 400	579 500*	551 700	678 300*			12.2
14.0	81.4	75.3	376 500*	293 000	502 900*	454 800	589 600*			14.0
16.0	79.8	75.0	326 300*	240 400	437 500*	378 000	513 900*			16.0
18.0	78.2	74.5	285 900*	201 600	386 200*	321 300	454 400*			18.0
20.0	76.6	74.0	251 700*	171 700	344 700*	277 600	406 400*	383 700	468 000*	20.0
22.0	75.0	73.5	223 900*	147 800	310 500*	242 800	366 700*	337 800	423 000*	22.0
24.0	73.4	72.9	200 800*	128 400	281 800*	214 500	333 500*	300 600	385 200*	24.0
26.0	71.7	72.2	181 400*	112 300	257 400*	191 000	305 200*	269 700	353 100*	26.0
28.0	70.0	71.5	164 800*	98 700	236 400*	171 100	280 900*	243 700	325 400*	28.0
30.0	68.4	70.7	150 500*	87 000	218 100*	154 200	259 600*	221 400	301 200*	30.0
32.0	66.7	69.8	138 000*	77 000	201 600*	139 500	241 000*	202 100	280 100*	32.0
34.0	64.9	68.9	127 000*	68 200	186 800*	126 700	224 600*	185 300	261 300*	34.0
36.0	63.2	67.8	117 200*	60 400	173 600*	115 400	209 800*	170 400	244 600*	36.0
38.0	61.4	66.7	108 500*	53 500	161 800*	105 400	196 700*	157 300	229 700*	38.0
40.0	59.6	65.6	100 600*	47 300	151 300*	96 400	184 700*	145 500	216 100*	40.0
42.0	57.7	64.3	93 500*	41 800	141 700*	88 300	174 000*	134 900	203 900*	42.0
44.0	55.8	62.9	87 000*	36 800	133 000*	81 000	164 100*	125 400	192 700*	44.0
46.0	53.9	61.5	81 100*	32 200	125 100*	74 400	155 100*	116 600	182 500*	46.0
48.0	51.9	59.9	75 700*	28 000	117 800*	68 300	146 800*	108 600	173 000*	48.0
50.0	49.8	58.2	70 700*	24 100	111 100*	62 700	138 900*	101 400	164 400*	50.0
52.0	47.7	56.4	66 100*	20 500	105 000*	57 600	131 600*	94 700	156 400*	52.0
54.0	45.5	54.4	61 900*	17 300	99 300*	52 800	124 900*	88 400	148 900*	54.0
56.0	43.2	52.3	57 900*	14 200	93 900*	48 400	118 700*	82 700	142 000*	56.0
58.0	40.8	50.0	54 200*	11 300	89 000*	44 300	112 900*	77 300	135 500*	58.0
60.0	38.3	47.4	50 200*	8 600	84 400*	40 400	107 400*	72 300	129 500*	60.0
62.0	35.6	44.7	46 400*	6 200	80 000*	36 800	102 300*	67 600	123 800*	62.0
64.0	32.8	41.6	42 700*	3 800	75 900*	33 400	97 500*	63 200	118 400*	64.0
66.0	29.6	38.2	39 300*		72 100*	30 200	93 000*	59 000	113 400*	66.0

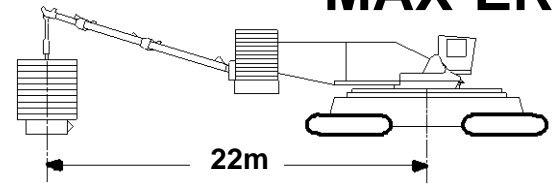


Liftcrane Boom Capacities

Boom No. 80 with 42.7m Mast No. 81
 208 060 kg Crane Counterweight
 90 720 kg Carbody Counterweight
 0 kg Thru 511 330 kg Hanging Counterweight
 at 22m Position
 Narrow or Wide Crawler Arrangement - 360 Degree Rating

Meets
ANSI B30.5
Requirements

**21000
MAX-ER**



73.2m (240 Ft.) Boom

Oper. Rad. m	Boom Ang. Deg.	Boom Point Elev. m	351 670 kg Hanging Counterweight		431 500 kg Hanging Counterweight		Oper. Rad. m
			Minimum Boom Capacity To Swing and Travel Kilograms	Boom Capacity Kilograms	Minimum Boom Capacity To Swing and Travel Kilograms	Boom Capacity Kilograms	
12.2	82.9	75.6					12.2
14.0	81.4	75.3					14.0
16.0	79.8	75.0					16.0
18.0	78.2	74.5					18.0
20.0	76.6	74.0					20.0
22.0	75.0	73.5					22.0
24.0	73.4	72.9					24.0
26.0	71.7	72.2					26.0
28.0	70.0	71.5					28.0
30.0	68.4	70.7	288 900	343 100*			30.0
32.0	66.7	69.8	264 800	319 100*			32.0
34.0	64.9	68.9	243 900	298 200*			34.0
36.0	63.2	67.8	225 500	279 400*			36.0
38.0	61.4	66.7	209 200	262 600*			38.0
40.0	59.6	65.6	194 600	247 500*			40.0
42.0	57.7	64.3	181 500	233 800*			42.0
44.0	55.8	62.9	169 700	221 200*			44.0
46.0	53.9	61.5	158 900	209 800*	201 300	237 200*	46.0
48.0	51.9	59.9	149 100	199 300*	189 500	225 500*	48.0
50.0	49.8	58.2	140 000	189 600*	178 700	214 800*	50.0
52.0	47.7	56.4	131 700	180 600*	168 800	204 900*	52.0
54.0	45.5	54.4	124 000	172 300*	159 700	195 600*	54.0
56.0	43.2	52.3	116 900	164 500*	151 200	187 100*	56.0
58.0	40.8	50.0	110 300	157 300*	143 300	179 000*	58.0
60.0	38.3	47.4	104 100	150 500*	135 900	171 600*	60.0
62.0	35.6	44.7	98 300	144 200*	129 100	164 600*	62.0
64.0	32.8	41.6	92 800	138 200*	122 600	158 000*	64.0
66.0	29.6	38.2	87 700	132 600*	116 400	151 700*	66.0

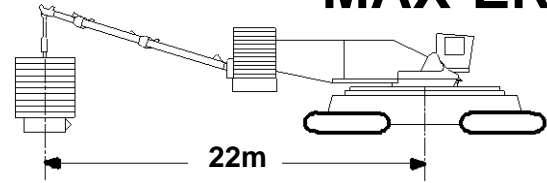


Liftcrane Boom Capacities

Boom No. 80 with 42.7m Mast No. 81
208 060 kg Crane Counterweight
90 720 kg Carbody Counterweight
0 kg Thru 511 330 kg Hanging Counterweight
at 22m Position
Narrow or Wide Crawler Arrangement - 360 Degree Rating

Meets
ANSI B30.5
Requirements

21000
MAX-ER



79.2m (260 Ft.) Boom

Oper. Rad. m	Boom Ang. Deg.	Boom Point Elev. m	0 kg Hanging Counterweight	112 170 kg Hanging Counterweight		192 010 kg Hanging Counterweight		271 840 kg Hanging Counterweight		Oper. Rad. m
			Boom Capacity Kilograms	Minimum Boom Capacity To Swing and Travel Kilograms	Boom Capacity Kilograms	Minimum Boom Capacity To Swing and Travel Kilograms	Boom Capacity Kilograms	Minimum Boom Capacity To Swing and Travel Kilograms	Boom Capacity Kilograms	
13.7	82.3	81.5	382 900*	303 200	511 800*	470 600	600 200*			13.7
14.0	82.1	81.5	375 200*	294 900	501 900*	458 500	588 700*			14.0
16.0	80.6	81.2	324 200*	240 400	435 500*	379 000	511 900*			16.0
18.0	79.2	80.8	284 000*	201 000	384 100*	321 500	452 300*			18.0
20.0	77.7	80.3	249 800*	170 600	342 600*	277 200	404 300*	383 800	466 000*	20.0
22.0	76.2	79.8	222 000*	146 500	308 400*	241 900	364 600*	337 500	420 800*	22.0
24.0	74.7	79.3	198 900*	126 800	279 700*	213 300	331 400*	299 900	383 000*	24.0
26.0	73.2	78.7	179 400*	110 600	255 300*	189 600	303 100*	268 700	350 900*	26.0
28.0	71.7	78.0	162 800*	96 800	234 200*	169 600	278 700*	242 400	323 200*	28.0
30.0	70.1	77.2	148 400*	85 000	215 900*	152 400	257 500*	219 900	299 100*	30.0
32.0	68.6	76.5	135 900*	74 900	199 600*	137 700	238 900*	200 500	277 900*	32.0
34.0	67.0	75.6	124 900*	66 000	184 700*	124 800	222 400*	183 600	259 200*	34.0
36.0	65.4	74.7	115 100*	58 200	171 500*	113 400	207 700*	168 600	242 500*	36.0
38.0	63.8	73.7	106 400*	51 200	159 800*	103 300	194 500*	155 400	227 500*	38.0
40.0	62.1	72.6	98 500*	45 000	149 200*	94 300	182 500*	143 500	214 000*	40.0
42.0	60.5	71.5	91 400*	39 400	139 600*	86 100	171 700*	132 800	201 700*	42.0
44.0	58.8	70.2	84 900*	34 300	130 900*	78 700	161 900*	123 200	190 500*	44.0
46.0	57.1	68.9	79 000*	29 700	123 000*	72 100	152 900*	114 400	180 200*	46.0
48.0	55.3	67.6	73 600*	25 500	115 700*	66 000	144 600*	106 500	170 800*	48.0
50.0	53.5	66.1	68 600*	21 600	109 000*	60 300	136 800*	99 100	162 200*	50.0
52.0	51.6	64.5	64 000*	18 000	102 900*	55 200	129 500*	92 400	154 100*	52.0
54.0	49.7	62.8	59 800*	14 700	97 100*	50 400	122 800*	86 100	146 700*	54.0
56.0	47.8	61.0	55 800*	11 700	91 800*	46 000	116 600*	80 400	139 800*	56.0
58.0	45.8	59.0	51 700*	8 800	86 900*	41 900	110 700*	75 000	133 300*	58.0
60.0	43.7	56.9	47 600*	6 100	82 300*	38 000	105 300*	70 000	127 300*	60.0
62.0	41.5	54.7	43 800*	3 600	77 900*	34 400	100 200*	65 200	121 600*	62.0
64.0	39.2	52.2	40 200*	1 300	73 900*	31 000	95 400*	60 800	116 300*	64.0
66.0	36.8	49.6	36 700*		70 000*	27 800	91 000*	56 700	111 300*	66.0
68.0	34.3	46.7	33 500*		66 400*	24 800	86 700*	52 800	106 600*	68.0
70.0	31.5	43.5	30 500*		63 000*	22 000	82 700*	49 100	102 100*	70.0

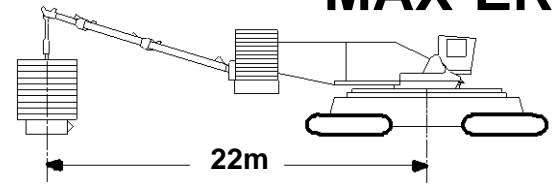


Liftcrane Boom Capacities

Boom No. 80 with 42.7m Mast No. 81
208 060 kg Crane Counterweight
90 720 kg Carbody Counterweight
0 kg Thru 511 330 kg Hanging Counterweight
at 22m Position
Narrow or Wide Crawler Arrangement - 360 Degree Rating

Meets
ANSI B30.5
Requirements

**21000
MAX-ER**



79.2m (260 Ft.) Boom

Oper. Rad. m	Boom Ang. Deg.	Boom Point Elev. m	351 670 kg Hanging Counterweight		431 500 kg Hanging Counterweight		Oper. Rad. m
			Minimum Boom Capacity To Swing and Travel Kilograms	Boom Capacity Kilograms	Minimum Boom Capacity To Swing and Travel Kilograms	Boom Capacity Kilograms	
13.7	82.3	81.5					13.7
14.0	82.1	81.5					14.0
16.0	80.6	81.2					16.0
18.0	79.2	80.8					18.0
20.0	77.7	80.3					20.0
22.0	76.2	79.8					22.0
24.0	74.7	79.3					24.0
26.0	73.2	78.7					26.0
28.0	71.7	78.0					28.0
30.0	70.1	77.2					30.0
32.0	68.6	76.5	263 400	317 000*			32.0
34.0	67.0	75.6	242 400	296 000*			34.0
36.0	65.4	74.7	223 900	277 300*			36.0
38.0	63.8	73.7	207 500	260 500*			38.0
40.0	62.1	72.6	192 800	245 300*			40.0
42.0	60.5	71.5	179 600	231 600*			42.0
44.0	58.8	70.2	167 700	219 100*			44.0
46.0	57.1	68.9	156 900	207 600*	199 400	235 000*	46.0
48.0	55.3	67.6	147 000	197 100*	187 500	223 300*	48.0
50.0	53.5	66.1	137 900	187 400*	176 700	212 600*	50.0
52.0	51.6	64.5	129 600	178 400*	166 800	202 600*	52.0
54.0	49.7	62.8	121 800	170 100*	157 600	193 400*	54.0
56.0	47.8	61.0	114 700	162 300*	149 100	184 900*	56.0
58.0	45.8	59.0	108 100	155 100*	141 200	176 900*	58.0
60.0	43.7	56.9	101 900	148 400*	133 800	169 400*	60.0
62.0	41.5	54.7	96 100	142 000*	127 000	162 400*	62.0
64.0	39.2	52.2	90 600	136 100*	120 500	155 800*	64.0
66.0	36.8	49.6	85 600	130 400*	114 400	149 600*	66.0
68.0	34.3	46.7	80 700	125 100*	108 700	143 700*	68.0
70.0	31.5	43.5	76 200	120 100*	103 300	138 200*	70.0

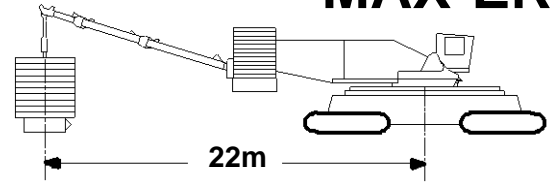


Liftcrane Boom Capacities

Boom No. 80 with 42.7m Mast No. 81
208 060 kg Crane Counterweight
90 720 kg Carbody Counterweight
0 kg Thru 511 330 kg Hanging Counterweight
at 22m Position
Narrow or Wide Crawler Arrangement - 360 Degree Rating

Meets
ANSI B30.5
Requirements

21000
MAX-ER



85.3m (280 Ft.) Boom

Oper. Rad. m	Boom Ang. Deg.	Boom Point Elev. m	0 kg Hanging Counterweight	112 170 kg Hanging Counterweight		192 010 kg Hanging Counterweight		271 840 kg Hanging Counterweight		Oper. Rad. m
			Boom Capacity Kilograms	Minimum Boom Capacity To Swing and Travel Kilograms	Boom Capacity Kilograms	Minimum Boom Capacity To Swing and Travel Kilograms	Boom Capacity Kilograms	Minimum Boom Capacity To Swing and Travel Kilograms	Boom Capacity Kilograms	
13.7	82.9	87.7	381 600*	305 000	510 400*	473 800	598 900*			13.7
14.0	82.7	87.7	373 900*	296 700	500 500*	461 500	587 400*			14.0
16.0	81.3	87.4	322 900*	241 200	434 100*	380 800	510 500*			16.0
18.0	79.9	87.0	282 800*	201 300	382 800*	322 500	451 000*			18.0
20.0	78.6	86.6	248 700*	170 500	341 300*	277 700	402 900*	385 300	464 900*	20.0
22.0	77.2	86.1	220 700*	146 100	307 000*	242 000	363 200*	338 100	419 500*	22.0
24.0	75.8	85.6	197 600*	126 200	278 300*	213 100	330 000*	300 100	381 700*	24.0
26.0	74.4	85.0	178 200*	109 700	253 900*	189 200	301 700*	268 600	349 500*	26.0
28.0	73.0	84.4	161 500*	95 900	232 800*	168 900	277 300*	242 100	321 800*	28.0
30.0	71.6	83.7	147 200*	84 000	214 500*	151 700	256 100*	219 400	297 700*	30.0
32.0	70.2	83.0	134 600*	73 800	198 300*	136 800	237 500*	199 900	276 500*	32.0
34.0	68.7	82.2	123 600*	64 800	183 400*	123 800	221 000*	182 800	257 800*	34.0
36.0	67.3	81.4	113 800*	56 900	170 200*	112 400	206 300*	167 800	241 100*	36.0
38.0	65.8	80.5	105 100*	49 900	158 500*	102 200	193 100*	154 400	226 100*	38.0
40.0	64.3	79.5	97 200*	43 700	147 900*	93 100	181 200*	142 500	212 600*	40.0
42.0	62.8	78.5	90 100*	38 000	138 300*	84 900	170 400*	131 800	200 300*	42.0
44.0	61.3	77.4	83 600*	32 900	129 600*	77 500	160 500*	122 100	189 100*	44.0
46.0	59.7	76.2	77 700*	28 300	121 700*	70 800	151 500*	113 300	178 900*	46.0
48.0	58.1	74.9	72 300*	24 100	114 400*	64 600	143 200*	105 300	169 500*	48.0
50.0	56.5	73.6	67 300*	20 200	107 700*	59 000	135 500*	97 900	160 800*	50.0
52.0	54.9	72.2	62 700*	16 600	101 600*	53 800	128 200*	91 200	152 800*	52.0
54.0	53.2	70.7	58 500*	13 300	95 900*	49 100	121 500*	84 900	145 400*	54.0
56.0	51.5	69.1	54 500*	10 200	90 500*	44 600	115 300*	79 100	138 500*	56.0
58.0	49.7	67.4	50 200*	7 300	85 600*	40 500	109 500*	73 700	132 000*	58.0
60.0	47.9	65.6	46 100*	4 700	81 000*	36 600	104 000*	68 600	126 000*	60.0
62.0	46.0	63.6	42 300*	2 200	76 700*	33 000	99 000*	64 000	120 300*	62.0
64.0	44.1	61.6	38 700*		72 600*	29 700	94 200*	59 600	115 000*	64.0
66.0	42.1	59.4	35 200*		68 800*	26 500	89 700*	55 400	110 000*	66.0
68.0	40.0	57.0	32 000*		65 200*	23 500	85 500*	51 500	105 200*	68.0
70.0	37.8	54.4	29 000*		61 800*	20 700	81 500*	47 900	100 800*	70.0
74.0	33.1	48.6	23 400*		55 500*	15 400	74 200*	41 100	92 600*	74.0

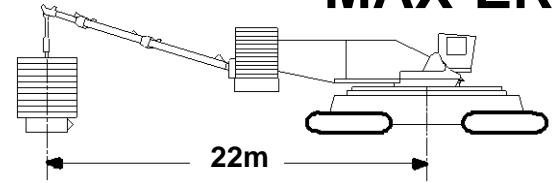


Liftcrane Boom Capacities

Boom No. 80 with 42.7m Mast No. 81
 208 060 kg Crane Counterweight
 90 720 kg Carbody Counterweight
 0 kg Thru 511 330 kg Hanging Counterweight
 at 22m Position
 Narrow or Wide Crawler Arrangement - 360 Degree Rating

Meets
ANSI B30.5
Requirements

**21000
MAX-ER**



85.3m (280 Ft.) Boom

Oper. Rad. m	Boom Ang. Deg.	Boom Point Elev. m	351 670 kg Hanging Counterweight		431 500 kg Hanging Counterweight		511 330 kg Hanging Counterweight		Oper. Rad. m
			Minimum Boom Capacity To Swing and Travel Kilograms	Boom Capacity Kilograms	Minimum Boom Capacity To Swing and Travel Kilograms	Boom Capacity Kilograms	Minimum Boom Capacity To Swing and Travel Kilograms	Boom Capacity Kilograms	
13.7	82.9	87.7							13.7
14.0	82.7	87.7							14.0
16.0	81.3	87.4							16.0
18.0	79.9	87.0							18.0
20.0	78.6	86.6							20.0
22.0	77.2	86.1							22.0
24.0	75.8	85.6							24.0
26.0	74.4	85.0							26.0
28.0	73.0	84.4							28.0
30.0	71.6	83.7							30.0
32.0	70.2	83.0	263 000	315 600*					32.0
34.0	68.7	82.2	241 900	294 600*					34.0
36.0	67.3	81.4	223 200	275 900*					36.0
38.0	65.8	80.5	206 700	259 100*					38.0
40.0	64.3	79.5	192 000	244 000*					40.0
42.0	62.8	78.5	178 800	230 200*					42.0
44.0	61.3	77.4	166 800	217 700*					44.0
46.0	59.7	76.2	155 900	206 200*					46.0
48.0	58.1	74.9	145 900	195 700*	186 700	222 000*			48.0
50.0	56.5	73.6	136 800	186 000*	175 800	211 200*			50.0
52.0	54.9	72.2	128 500	177 100*	165 800	201 300*			52.0
54.0	53.2	70.7	120 700	168 700*	156 600	192 100*			54.0
56.0	51.5	69.1	113 500	161 000*	148 100	183 500*			56.0
58.0	49.7	67.4	106 900	153 800*	140 100	175 500*			58.0
60.0	47.9	65.6	100 700	147 000*	132 800	168 000*			60.0
62.0	46.0	63.6	94 900	140 700*	125 900	161 100*			62.0
64.0	44.1	61.6	89 500	134 700*	119 400	154 500*			64.0
66.0	42.1	59.4	84 400	129 100*	113 300	148 300*			66.0
68.0	40.0	57.0	79 600	123 900*	107 700	142 500*	135 700	161 100*	68.0
70.0	37.8	54.4	75 000	118 900*	102 200	136 900*	129 500	155 000*	70.0
74.0	33.1	48.6	66 700	109 700*	92 300	126 800*	118 000	143 900*	74.0

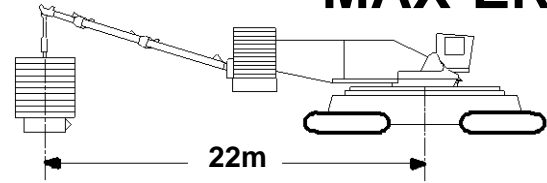


Liftcrane Boom Capacities

Boom No. 80 with 42.7m Mast No. 81
208 060 kg Crane Counterweight
90 720 kg Carbody Counterweight
0 kg Thru 511 330 kg Hanging Counterweight
at 22m Position
Narrow or Wide Crawler Arrangement - 360 Degree Rating

Meets
ANSI B30.5
Requirements

21000
MAX-ER



91.4m (300 Ft.) Boom

Oper. Rad. m	Boom Ang. Deg.	Boom Point Elev. m	0 kg Hanging Counterweight	112 170 kg Hanging Counterweight		192 010 kg Hanging Counterweight		271 840 kg Hanging Counterweight		Oper. Rad. m
			Boom Capacity Kilograms	Minimum Boom Capacity To Swing and Travel Kilograms	Boom Capacity Kilograms	Minimum Boom Capacity To Swing and Travel Kilograms	Boom Capacity Kilograms	Minimum Boom Capacity To Swing and Travel Kilograms	Boom Capacity Kilograms	
15.2	82.4	93.6	338 600*	259 900	455 100*	408 900	535 100*			15.2
16.0	81.9	93.5	321 700*	242 100	433 200*	382 900	509 700*			16.0
18.0	80.6	93.2	280 800*	200 300	380 600*	322 100	448 900*			18.0
20.0	79.3	92.8	246 700*	169 200	339 100*	276 800	400 800*	384 900	462 700*	20.0
22.0	78.1	92.4	218 800*	144 500	304 800*	240 900	361 100*	337 300	417 300*	22.0
24.0	76.8	91.9	195 600*	124 400	276 100*	211 700	327 800*	299 000	379 500*	24.0
26.0	75.5	91.4	176 200*	107 800	251 700*	187 500	299 500*	267 300	347 300*	26.0
28.0	74.2	90.8	159 500*	93 800	230 600*	167 100	275 100*	240 500	319 600*	28.0
30.0	72.9	90.2	145 100*	81 900	212 300*	149 800	253 900*	217 700	295 500*	30.0
32.0	71.5	89.5	132 600*	71 500	196 200*	134 800	235 300*	198 000	274 300*	32.0
34.0	70.2	88.8	121 500*	62 500	181 300*	121 700	218 800*	180 800	255 600*	34.0
36.0	68.9	88.0	111 700*	54 600	168 100*	110 100	204 100*	165 700	238 900*	36.0
38.0	67.5	87.1	102 900*	47 500	156 400*	99 900	190 900*	152 300	223 900*	38.0
40.0	66.1	86.3	95 100*	41 200	145 800*	90 700	179 000*	140 300	210 300*	40.0
42.0	64.7	85.3	87 900*	35 500	136 200*	82 500	168 100*	129 600	198 100*	42.0
44.0	63.3	84.3	81 500*	30 400	127 500*	75 100	158 300*	119 800	186 900*	44.0
46.0	61.9	83.2	75 600*	25 800	119 500*	68 300	149 300*	111 000	176 700*	46.0
48.0	60.5	82.1	70 200*	21 500	112 300*	62 200	141 000*	102 900	167 300*	48.0
50.0	59.0	80.9	65 200*	17 600	105 600*	56 500	133 300*	95 500	158 600*	50.0
52.0	57.5	79.6	60 600*	14 000	99 400*	51 300	126 100*	88 700	150 600*	52.0
54.0	56.0	78.2	56 300*	10 600	93 700*	46 500	119 400*	82 400	143 100*	54.0
56.0	54.5	76.8	52 000*	7 600	88 400*	42 100	113 100*	76 600	136 200*	56.0
58.0	52.9	75.3	47 500*	4 700	83 400*	37 900	107 300*	71 200	129 800*	58.0
60.0	51.3	73.7	43 400*	2 000	78 800*	34 100	101 900*	66 100	123 700*	60.0
62.0	49.6	72.0	39 500*		74 500*	30 400	96 800*	61 500	118 100*	62.0
64.0	48.0	70.2	35 900*		70 500*	27 100	92 000*	57 100	112 800*	64.0
66.0	46.2	68.3	32 500*		66 600*	23 900	87 600*	52 900	107 800*	66.0
68.0	44.4	66.2	29 300*		63 100*	20 900	83 400*	49 000	103 000*	68.0
70.0	42.6	64.0	26 300*		59 600*	18 100	79 400*	45 400	98 600*	70.0
74.0	38.7	59.2	20 700*		53 400*	12 900	72 000*	38 600	90 400*	74.0
78.0	34.4	53.7			47 800*	8 200	65 400*	32 500	83 000*	78.0
82.0	29.5	47.0			42 600*	3 900	59 500*	26 900	76 200*	82.0

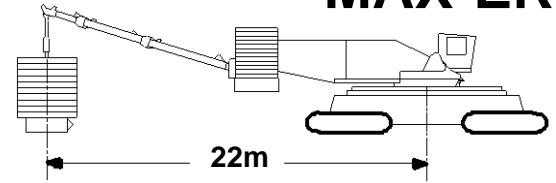


Liftcrane Boom Capacities

Boom No. 80 with 42.7m Mast No. 81
 208 060 kg Crane Counterweight
 90 720 kg Carbody Counterweight
 0 kg Thru 511 330 kg Hanging Counterweight
 at 22m Position
 Narrow or Wide Crawler Arrangement - 360 Degree Rating

Meets
ANSI B30.5
Requirements

**21000
MAX-ER**



91.4m (300 Ft.) Boom

Oper. Rad. m	Boom Ang. Deg.	Boom Point Elev. m	351 670 kg Hanging Counterweight		431 500 kg Hanging Counterweight		511 330 kg Hanging Counterweight		Oper. Rad. m
			Minimum Boom Capacity To Swing and Travel Kilograms	Boom Capacity Kilograms	Minimum Boom Capacity To Swing and Travel Kilograms	Boom Capacity Kilograms	Minimum Boom Capacity To Swing and Travel Kilograms	Boom Capacity Kilograms	
15.2	82.4	93.6							15.2
16.0	81.9	93.5							16.0
18.0	80.6	93.2							18.0
20.0	79.3	92.8							20.0
22.0	78.1	92.4							22.0
24.0	76.8	91.9							24.0
26.0	75.5	91.4							26.0
28.0	74.2	90.8							28.0
30.0	72.9	90.2							30.0
32.0	71.5	89.5	261 400	313 400*					32.0
34.0	70.2	88.8	240 100	292 400*					34.0
36.0	68.9	88.0	221 400	273 700*					36.0
38.0	67.5	87.1	204 800	256 900*					38.0
40.0	66.1	86.3	189 900	241 700*					40.0
42.0	64.7	85.3	176 600	228 000*					42.0
44.0	63.3	84.3	164 600	215 400*					44.0
46.0	61.9	83.2	153 600	204 000*					46.0
48.0	60.5	82.1	143 700	193 500*	184 500	219 800*			48.0
50.0	59.0	80.9	134 500	183 800*	173 600	209 000*			50.0
52.0	57.5	79.6	126 100	174 800*	163 500	199 100*			52.0
54.0	56.0	78.2	118 400	166 500*	154 300	189 800*			54.0
56.0	54.5	76.8	111 200	158 700*	145 800	181 300*			56.0
58.0	52.9	75.3	104 500	151 600*	137 800	173 300*			58.0
60.0	51.3	73.7	98 300	144 800*	130 400	165 800*			60.0
62.0	49.6	72.0	92 500	138 500*	123 500	158 800*			62.0
64.0	48.0	70.2	87 100	132 500*	117 000	152 200*			64.0
66.0	46.2	68.3	81 900	126 900*	111 000	146 100*			66.0
68.0	44.4	66.2	77 100	121 700*	105 300	140 200*	133 400	158 900*	68.0
70.0	42.6	64.0	72 600	116 700*	99 900	134 800*	127 200	152 800*	70.0
74.0	38.7	59.2	64 300	107 500*	90 000	124 600*	115 700	141 700*	74.0
78.0	34.4	53.7	56 700	99 200*	81 100	115 400*	105 400	131 700*	78.0
82.0	29.5	47.0	50 000	91 700*	73 000	107 100*	96 100	122 600*	82.0

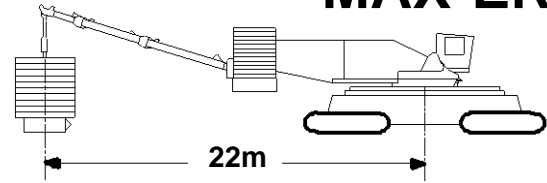


Liftcrane Boom Capacities

Boom No. 80 with 42.7m Mast No. 81
208 060 kg Crane Counterweight
90 720 kg Carbody Counterweight
0 kg Thru 511 330 kg Hanging Counterweight
at 22m Position
Narrow or Wide Crawler Arrangement - 360 Degree Rating

Meets
ANSI B30.5
Requirements

21000
MAX-ER



97.5m (320 Ft.) Boom

Oper. Rad. m	Boom Ang. Deg.	Boom Point Elev. m	0 kg Hanging Counterweight	112 170 kg Hanging Counterweight		192 010 kg Hanging Counterweight		271 840 kg Hanging Counterweight		Oper. Rad. m
			Boom Capacity Kilograms	Minimum Boom Capacity To Swing and Travel Kilograms	Boom Capacity Kilograms	Minimum Boom Capacity To Swing and Travel Kilograms	Boom Capacity Kilograms	Minimum Boom Capacity To Swing and Travel Kilograms	Boom Capacity Kilograms	
15.2	82.9	99.8	339 900*	264 700	456 500*	414 800	500 600*			15.2
16.0	82.4	99.7	323 000*	246 600	434 600*	388 500	493 100*			16.0
18.0	81.2	99.4	282 300*	204 300	382 000*	326 900	453 000*			18.0
20.0	80.0	99.0	248 300*	172 800	340 600*	281 100	402 200*	389 800	464 200*	20.0
22.0	78.8	98.6	220 300*	147 800	306 300*	244 700	362 500*	341 600	418 700*	22.0
24.0	77.6	98.2	197 200*	127 500	277 600*	215 200	329 200*	302 900	380 900*	24.0
26.0	76.4	97.7	177 700*	110 800	253 100*	190 800	301 000*	271 000	348 800*	26.0
28.0	75.2	97.1	161 100*	96 700	232 100*	170 300	276 600*	244 000	321 000*	28.0
30.0	74.0	96.6	146 700*	84 600	213 800*	152 800	255 400*	221 000	297 000*	30.0
32.0	72.7	95.9	134 100*	74 200	197 700*	137 700	236 800*	201 200	275 800*	32.0
34.0	71.5	95.3	123 100*	65 100	182 900*	124 500	220 300*	183 900	257 100*	34.0
36.0	70.3	94.5	113 300*	57 100	169 700*	112 900	205 600*	168 700	240 400*	36.0
38.0	69.0	93.8	104 500*	50 100	157 900*	102 600	192 400*	155 200	225 400*	38.0
40.0	67.7	92.9	96 600*	43 700	147 400*	93 500	180 500*	143 200	211 800*	40.0
42.0	66.4	92.0	89 500*	38 000	137 800*	85 200	169 600*	132 400	199 600*	42.0
44.0	65.1	91.1	83 100*	32 900	129 100*	77 700	159 800*	122 600	188 400*	44.0
46.0	63.8	90.1	77 200*	28 200	121 100*	70 900	150 800*	113 700	178 200*	46.0
48.0	62.5	89.1	71 800*	23 900	113 900*	64 800	142 600*	105 600	168 800*	48.0
50.0	61.2	88.0	66 800*	20 000	107 200*	59 100	134 900*	98 200	160 100*	50.0
52.0	59.8	86.8	62 200*	16 400	101 000*	53 900	127 700*	91 300	152 100*	52.0
54.0	58.4	85.6	58 000*	13 000	95 300*	49 000	121 000*	85 100	144 700*	54.0
56.0	57.0	84.3	54 000*	10 000	90 000*	44 600	114 700*	79 200	137 800*	56.0
58.0	55.6	82.9	49 900*	7 100	85 100*	40 400	108 900*	73 800	131 400*	58.0
60.0	54.1	81.4	45 800*	4 400	80 500*	36 600	103 500*	68 700	125 300*	60.0
62.0	52.7	79.9	41 900*	1 900	76 100*	32 900	98 400*	64 000	119 700*	62.0
64.0	51.1	78.3	38 300*		72 100*	29 600	93 700*	59 600	114 400*	64.0
66.0	49.6	76.6	34 900*		68 300*	26 400	89 200*	55 500	109 400*	66.0
68.0	48.0	74.8	31 700*		64 700*	23 400	85 000*	51 600	104 700*	68.0
70.0	46.4	72.9	28 700*		61 300*	20 600	81 000*	47 900	100 200*	70.0
74.0	43.0	68.7	23 100*		55 100*	15 400	73 700*	41 200	92 000*	74.0
78.0	39.4	64.0			49 500*	10 700	67 100*	35 100	84 600*	78.0
82.0	35.4	58.6			44 400*	6 500	61 200*	29 600	77 900*	82.0
86.0	31.1	52.3			39 800*	2 600	55 800*	24 600	71 800*	86.0

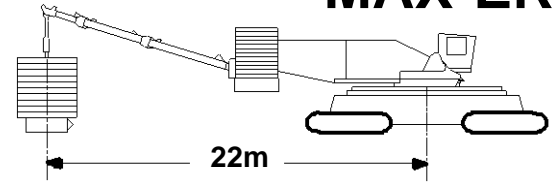


Liftcrane Boom Capacities

Boom No. 80 with 42.7m Mast No. 81
 208 060 kg Crane Counterweight
 90 720 kg Carbody Counterweight
 0 kg Thru 511 330 kg Hanging Counterweight
 at 22m Position
 Narrow or Wide Crawler Arrangement - 360 Degree Rating

Meets
ANSI B30.5
Requirements

**21000
MAX-ER**



97.5m (320 Ft.) Boom

Oper. Rad. m	Boom Ang. Deg.	Boom Point Elev. m	351 670 kg Hanging Counterweight		431 500 kg Hanging Counterweight		511 330 kg Hanging Counterweight		Oper. Rad. m
			Minimum Boom Capacity To Swing and Travel Kilograms	Boom Capacity Kilograms	Minimum Boom Capacity To Swing and Travel Kilograms	Boom Capacity Kilograms	Minimum Boom Capacity To Swing and Travel Kilograms	Boom Capacity Kilograms	
15.2	82.9	99.8							15.2
16.0	82.4	99.7							16.0
18.0	81.2	99.4							18.0
20.0	80.0	99.0							20.0
22.0	78.8	98.6							22.0
24.0	77.6	98.2							24.0
26.0	76.4	97.7							26.0
28.0	75.2	97.1							28.0
30.0	74.0	96.6							30.0
32.0	72.7	95.9							32.0
34.0	71.5	95.3	243 400	293 900*					34.0
36.0	70.3	94.5	224 500	275 200*					36.0
38.0	69.0	93.8	207 800	258 400*					38.0
40.0	67.7	92.9	192 900	243 200*					40.0
42.0	66.4	92.0	179 600	229 500*					42.0
44.0	65.1	91.1	167 500	217 000*					44.0
46.0	63.8	90.1	156 500	205 500*					46.0
48.0	62.5	89.1	146 500	195 000*					48.0
50.0	61.2	88.0	137 300	185 300*	176 500	210 600*			50.0
52.0	59.8	86.8	128 900	176 400*	166 400	200 600*			52.0
54.0	58.4	85.6	121 100	168 100*	157 100	191 400*			54.0
56.0	57.0	84.3	113 900	160 300*	148 600	182 800*			56.0
58.0	55.6	82.9	107 200	153 100*	140 600	174 900*			58.0
60.0	54.1	81.4	101 000	146 400*	133 200	167 400*			60.0
62.0	52.7	79.9	95 100	140 000*	126 300	160 400*			62.0
64.0	51.1	78.3	89 700	134 100*	119 800	153 900*			64.0
66.0	49.6	76.6	84 600	128 500*	113 700	147 700*			66.0
68.0	48.0	74.8	79 800	123 300*	108 000	141 900*			68.0
70.0	46.4	72.9	75 200	118 300*	102 600	136 400*	130 000	154 500*	70.0
74.0	43.0	68.7	66 900	109 100*	92 700	126 300*	118 600	143 400*	74.0
78.0	39.4	64.0	59 500	100 900*	83 900	117 100*	108 300	133 400*	78.0
82.0	35.4	58.6	52 700	93 400*	75 800	108 900*	99 000	124 300*	82.0
86.0	31.1	52.3	46 500	86 600*	68 500	101 300*	90 500	116 100*	86.0

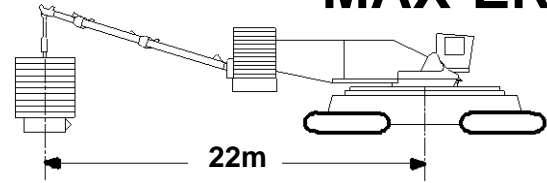


Liftcrane Boom Capacities

Boom No. 80 with 42.7m Mast No. 81
208 060 kg Crane Counterweight
90 720 kg Carbody Counterweight
0 kg Thru 511 330 kg Hanging Counterweight
at 22m Position
Narrow or Wide Crawler Arrangement - 360 Degree Rating

Meets
ANSI B30.5
Requirements

21000
MAX-ER



103.6m (340 Ft.) Boom

Oper. Rad. m	Boom Ang. Deg.	Boom Point Elev. m	0 kg Hanging Counterweight	112 170 kg Hanging Counterweight		192 010 kg Hanging Counterweight		271 840 kg Hanging Counterweight		Oper. Rad. m
			Boom Capacity Kilograms	Minimum Boom Capacity To Swing and Travel Kilograms	Boom Capacity Kilograms	Minimum Boom Capacity To Swing and Travel Kilograms	Boom Capacity Kilograms	Minimum Boom Capacity To Swing and Travel Kilograms	Boom Capacity Kilograms	
16.8	82.4	105.7	303 900*	227 700	410 400*	362 100	439 100*			16.8
18.0	81.7	105.6	280 800*	203 900	380 400*	327 300	439 100*			18.0
20.0	80.6	105.2	246 300*	171 400	338 400*	280 100	400 100*			20.0
22.0	79.5	104.8	218 300*	146 200	304 100*	243 400	360 300*	341 500	417 100*	22.0
24.0	78.4	104.4	195 200*	125 700	275 300*	213 700	327 000*	301 800	378 700*	24.0
26.0	77.2	104.0	175 700*	108 800	250 900*	189 100	298 700*	269 500	346 600*	26.0
28.0	76.1	103.5	159 000*	94 600	229 900*	168 400	274 400*	242 400	318 800*	28.0
30.0	74.9	102.9	144 600*	82 400	211 500*	150 800	253 100*	219 200	294 700*	30.0
32.0	73.8	102.3	132 000*	72 000	195 400*	135 600	234 500*	199 300	273 600*	32.0
34.0	72.6	101.7	121 000*	62 800	180 800*	122 300	218 000*	181 900	254 800*	34.0
36.0	71.5	101.0	111 200*	54 700	167 600*	110 700	203 300*	166 600	238 100*	36.0
38.0	70.3	100.3	102 400*	47 600	155 800*	100 300	190 100*	153 000	223 100*	38.0
40.0	69.1	99.5	94 500*	41 200	145 200*	91 000	178 200*	140 900	209 600*	40.0
42.0	67.9	98.7	87 400*	35 500	135 600*	82 700	167 400*	130 000	197 300*	42.0
44.0	66.7	97.8	80 900*	30 300	126 900*	75 300	157 600*	120 200	186 100*	44.0
46.0	65.5	96.9	75 000*	25 600	118 900*	68 400	148 600*	111 300	175 900*	46.0
48.0	64.3	95.9	69 600*	21 300	111 700*	62 200	140 300*	103 100	166 500*	48.0
50.0	63.0	94.9	64 600*	17 300	105 000*	56 500	132 700*	95 700	157 900*	50.0
52.0	61.8	93.8	60 000*	13 700	98 800*	51 300	125 500*	88 800	149 900*	52.0
54.0	60.5	92.7	55 700*	10 300	93 100*	46 400	118 800*	82 500	142 400*	54.0
56.0	59.2	91.5	51 500*	7 200	87 800*	42 000	112 500*	76 600	135 500*	56.0
58.0	57.9	90.2	47 100*	4 400	82 900*	37 800	106 800*	71 200	129 100*	58.0
60.0	56.6	88.9	43 000*		78 200*	33 900	101 300*	66 100	123 100*	60.0
62.0	55.2	87.5	39 100*		73 900*	30 300	96 200*	61 400	117 400*	62.0
64.0	53.8	86.0	35 500*		69 900*	26 900	91 500*	57 000	112 100*	64.0
66.0	52.4	84.5	32 100*		66 100*	23 700	87 000*	52 800	107 100*	66.0
68.0	51.0	82.9	28 900*		62 500*	20 700	82 800*	48 900	102 400*	68.0
70.0	49.6	81.2	25 900*		59 100*	17 900	78 800*	45 300	98 000*	70.0
74.0	46.6	77.5	20 400*		52 900*	12 700	71 500*	38 500	89 800*	74.0
78.0	43.4	73.4			47 300*	8 000	65 000*	32 400	82 400*	78.0
82.0	40.0	68.8			42 200*	3 800	59 100*	27 000	75 700*	82.0
86.0	36.4	63.5			37 600*		53 600*	21 900	69 700*	86.0
90.0	32.4	57.5			33 000*		48 700*	17 400	64 000*	90.0
94.0	27.9	50.4			28 200*		44 100*	13 100	58 800*	94.0

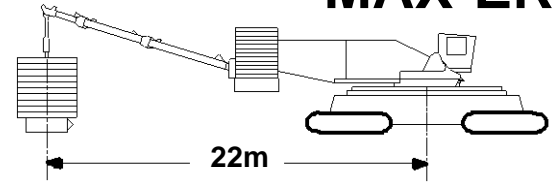


Liftcrane Boom Capacities

Boom No. 80 with 42.7m Mast No. 81
 208 060 kg Crane Counterweight
 90 720 kg Carbody Counterweight
 0 kg Thru 511 330 kg Hanging Counterweight
 at 22m Position
 Narrow or Wide Crawler Arrangement - 360 Degree Rating

Meets
ANSI B30.5
Requirements

**21000
MAX-ER**



103.6m (340 Ft.) Boom

Oper. Rad. m	Boom Ang. Deg.	Boom Point Elev. m	351 670 kg Hanging Counterweight		431 500 kg Hanging Counterweight		511 330 kg Hanging Counterweight		Oper. Rad. m
			Minimum Boom Capacity To Swing and Travel Kilograms	Boom Capacity Kilograms	Minimum Boom Capacity To Swing and Travel Kilograms	Boom Capacity Kilograms	Minimum Boom Capacity To Swing and Travel Kilograms	Boom Capacity Kilograms	
16.8	82.4	105.7							16.8
18.0	81.7	105.6							18.0
20.0	80.6	105.2							20.0
22.0	79.5	104.8							22.0
24.0	78.4	104.4							24.0
26.0	77.2	104.0							26.0
28.0	76.1	103.5							28.0
30.0	74.9	102.9							30.0
32.0	73.8	102.3							32.0
34.0	72.6	101.7	241 500	291 600*					34.0
36.0	71.5	101.0	222 600	272 900*					36.0
38.0	70.3	100.3	205 800	256 100*					38.0
40.0	69.1	99.5	190 800	241 000*					40.0
42.0	67.9	98.7	177 400	227 200*					42.0
44.0	66.7	97.8	165 200	214 700*					44.0
46.0	65.5	96.9	154 200	203 300*					46.0
48.0	64.3	95.9	144 100	192 800*	185 200	219 100*			48.0
50.0	63.0	94.9	134 900	183 100*	174 200	208 300*			50.0
52.0	61.8	93.8	126 400	174 100*	164 100	198 300*			52.0
54.0	60.5	92.7	118 600	165 800*	154 800	189 100*			54.0
56.0	59.2	91.5	111 400	158 100*	146 100	180 600*			56.0
58.0	57.9	90.2	104 700	150 900*	138 200	172 600*			58.0
60.0	56.6	88.9	98 400	144 100*	130 700	165 200*			60.0
62.0	55.2	87.5	92 600	137 800*	123 800	158 200*			62.0
64.0	53.8	86.0	87 200	131 900*	117 300	151 600*			64.0
66.0	52.4	84.5	82 000	126 300*	111 200	145 500*			66.0
68.0	51.0	82.9	77 200	121 000*	105 500	139 600*	133 800	158 300*	68.0
70.0	49.6	81.2	72 700	116 100*	100 100	134 100*	127 500	152 200*	70.0
74.0	46.6	77.5	64 400	106 900*	90 200	124 000*	116 100	141 100*	74.0
78.0	43.4	73.4	56 900	98 700*	81 300	114 900*	105 800	131 200*	78.0
82.0	40.0	68.8	50 100	91 200*	73 300	106 600*	96 500	122 100*	82.0
86.0	36.4	63.5	44 000	84 400*	66 000	99 100*	88 100	113 900*	86.0
90.0	32.4	57.5	38 300	78 200*	59 400	92 300*	80 400	106 300*	90.0
94.0	27.9	50.4	33 200	72 400*	53 200	85 900*	73 300	99 400*	94.0

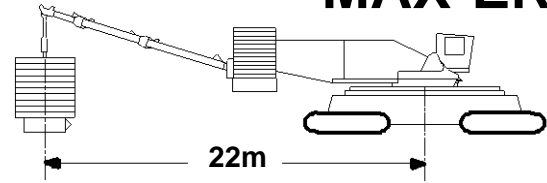


Liftcrane Boom Capacities

Boom No. 80 with 42.7m Mast No. 81
208 060 kg Crane Counterweight
90 720 kg Carbody Counterweight
0 kg Thru 511 330 kg Hanging Counterweight
at 22m Position
Narrow or Wide Crawler Arrangement - 360 Degree Rating

Meets
ANSI B30.5
Requirements

21000
MAX-ER



109.7m (360 Ft.) Boom

Oper. Rad. m	Boom Ang. Deg.	Boom Point Elev. m	0 kg Hanging Counterweight	112 170 kg Hanging Counterweight		192 010 kg Hanging Counterweight		271 840 kg Hanging Counterweight		Oper. Rad. m
			Boom Capacity Kilograms	Minimum Boom Capacity To Swing and Travel Kilograms	Boom Capacity Kilograms	Minimum Boom Capacity To Swing and Travel Kilograms	Boom Capacity Kilograms	Minimum Boom Capacity To Swing and Travel Kilograms	Boom Capacity Kilograms	
16.8	82.9	111.9	302 400*	228 200	386 300*					16.8
18.0	82.2	111.7	279 300*	204 000	374 500*					18.0
20.0	81.1	111.4	244 800*	171 100	336 700*	280 500	384 400*			20.0
22.0	80.1	111.0	216 800*	145 400	302 400*	243 300	360 600*			22.0
24.0	79.0	110.7	193 600*	124 700	273 700*	213 200	325 400*	302 200	374 500*	24.0
26.0	78.0	110.2	174 100*	107 700	249 200*	188 400	297 100*	269 200	344 900*	26.0
28.0	76.9	109.7	157 400*	93 200	228 200*	167 500	272 700*	241 800	317 200*	28.0
30.0	75.8	109.2	143 000*	81 000	209 900*	149 700	251 500*	218 400	293 100*	30.0
32.0	74.7	108.7	130 500*	70 400	193 800*	134 400	232 900*	198 300	271 900*	32.0
34.0	73.6	108.1	119 400*	61 200	179 200*	121 000	216 400*	180 800	253 100*	34.0
36.0	72.5	107.4	109 600*	53 100	166 000*	109 200	201 700*	165 400	236 400*	36.0
38.0	71.4	106.8	100 800*	45 900	154 200*	98 800	188 500*	151 700	221 500*	38.0
40.0	70.3	106.0	92 900*	39 500	143 600*	89 500	176 600*	139 500	207 900*	40.0
42.0	69.2	105.3	85 800*	33 700	134 000*	81 100	165 700*	128 600	195 700*	42.0
44.0	68.1	104.5	79 300*	28 500	125 300*	73 600	155 900*	118 700	184 500*	44.0
46.0	66.9	103.6	73 400*	23 800	117 400*	66 700	146 900*	109 700	174 200*	46.0
48.0	65.8	102.7	68 000*	19 400	110 100*	60 500	138 700*	101 500	164 900*	48.0
50.0	64.6	101.7	63 000*	15 500	103 400*	54 800	131 000*	94 100	156 200*	50.0
52.0	63.5	100.7	58 400*	11 800	97 200*	49 500	123 900*	87 200	148 200*	52.0
54.0	62.3	99.7	54 100*	8 500	91 500*	44 700	117 200*	80 800	140 800*	54.0
56.0	61.1	98.6	49 600*	5 300	86 200*	40 200	111 000*	75 000	133 900*	56.0
58.0	59.9	97.4	45 100*		81 300*	36 000	105 200*	69 500	127 500*	58.0
60.0	58.7	96.2	41 000*		76 700*	32 100	99 700*	64 400	121 400*	60.0
62.0	57.4	94.9	37 200*		72 300*	28 400	94 700*	59 700	115 800*	62.0
64.0	56.2	93.6	33 500*		68 300*	25 000	89 900*	55 300	110 500*	64.0
66.0	54.9	92.1	30 200*		64 500*	21 900	85 500*	51 100	105 500*	66.0
68.0	53.6	90.7	27 000*		60 900*	18 800	81 300*	47 200	100 800*	68.0
70.0	52.3	89.1	23 900*		57 500*	16 000	77 300*	43 500	96 400*	70.0
74.0	49.5	85.8	18 400*		51 300*	10 800	70 000*	36 700	88 200*	74.0
78.0	46.7	82.1			45 800*	6 200	63 400*	30 600	80 800*	78.0
82.0	43.7	78.0			40 700*	1 900	57 500*	25 200	74 200*	82.0
86.0	40.6	73.5			36 100*		52 100*	20 200	68 100*	86.0
90.0	37.2	68.4			31 200*		47 200*	15 600	62 500*	90.0
94.0	33.5	62.6			26 400*		42 600*	11 400	57 300*	94.0
98.0	29.4	55.9			21 900*		38 400*	7 500	52 500*	98.0

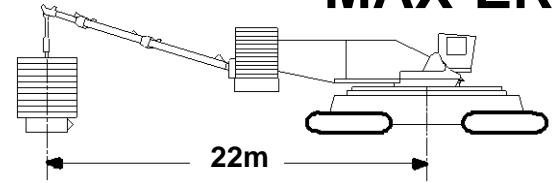


Liftcrane Boom Capacities

Boom No. 80 with 42.7m Mast No. 81
 208 060 kg Crane Counterweight
 90 720 kg Carbody Counterweight
 0 kg Thru 511 330 kg Hanging Counterweight
 at 22m Position
 Narrow or Wide Crawler Arrangement - 360 Degree Rating

Meets
ANSI B30.5
Requirements

**21000
MAX-ER**



109.7m (360 Ft.) Boom

Oper. Rad. m	Boom Ang. Deg.	Boom Point Elev. m	351 670 kg Hanging Counterweight		431 500 kg Hanging Counterweight		511 330 kg Hanging Counterweight		Oper. Rad. m
			Minimum Boom Capacity To Swing and Travel Kilograms	Boom Capacity Kilograms	Minimum Boom Capacity To Swing and Travel Kilograms	Boom Capacity Kilograms	Minimum Boom Capacity To Swing and Travel Kilograms	Boom Capacity Kilograms	
16.8	82.9	111.9							16.8
18.0	82.2	111.7							18.0
20.0	81.1	111.4							20.0
22.0	80.1	111.0							22.0
24.0	79.0	110.7							24.0
26.0	78.0	110.2							26.0
28.0	76.9	109.7							28.0
30.0	75.8	109.2							30.0
32.0	74.7	108.7							32.0
34.0	73.6	108.1	240 600	290 000*					34.0
36.0	72.5	107.4	221 600	271 200*					36.0
38.0	71.4	106.8	204 700	254 500*					38.0
40.0	70.3	106.0	189 600	239 300*					40.0
42.0	69.2	105.3	176 100	225 600*					42.0
44.0	68.1	104.5	163 900	213 100*					44.0
46.0	66.9	103.6	152 800	201 600*					46.0
48.0	65.8	102.7	142 700	191 100*	183 900	217 400*			48.0
50.0	64.6	101.7	133 400	181 400*	172 800	206 600*			50.0
52.0	63.5	100.7	124 900	172 500*	162 600	196 700*			52.0
54.0	62.3	99.7	117 000	164 100*	153 300	187 500*			54.0
56.0	61.1	98.6	109 800	156 400*	144 700	178 900*			56.0
58.0	59.9	97.4	103 000	149 200*	136 600	171 000*			58.0
60.0	58.7	96.2	96 800	142 500*	129 200	163 500*			60.0
62.0	57.4	94.9	90 900	136 200*	122 200	156 600*			62.0
64.0	56.2	93.6	85 500	130 200*	115 700	150 000*			64.0
66.0	54.9	92.1	80 300	124 700*	109 600	143 800*			66.0
68.0	53.6	90.7	75 500	119 400*	103 800	138 000*	132 200	156 600*	68.0
70.0	52.3	89.1	70 900	114 500*	98 500	132 500*	126 000	150 600*	70.0
74.0	49.5	85.8	62 600	105 300*	88 500	122 400*	114 500	139 500*	74.0
78.0	46.7	82.1	55 200	97 100*	79 700	113 300*	104 200	129 600*	78.0
82.0	43.7	78.0	48 400	89 600*	71 600	105 100*	94 900	120 500*	82.0
86.0	40.6	73.5	42 300	82 800*	64 400	97 600*	86 500	112 300*	86.0
90.0	37.2	68.4	36 700	76 600*	57 700	90 700*	78 800	104 800*	90.0
94.0	33.5	62.6	31 500	70 900*	51 600	84 400*	71 800	97 900*	94.0
98.0	29.4	55.9	26 700	65 600*	46 000	78 600*	65 300	91 500*	98.0

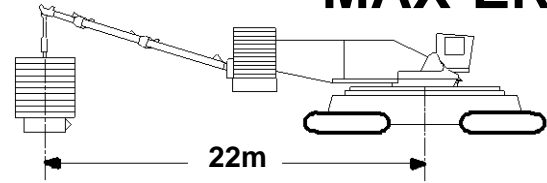


Liftcrane Boom Capacities

Boom No. 80 with 42.7m Mast No. 81
208 060 kg Crane Counterweight
90 720 kg Carbody Counterweight
0 kg Thru 511 330 kg Hanging Counterweight
at 22m Position
Narrow or Wide Crawler Arrangement - 360 Degree Rating

Meets
ANSI B30.5
Requirements

21000
MAX-ER



115.8m (380 Ft.) Boom

Oper. Rad. m	Boom Ang. Deg.	Boom Point Elev. m	112 170 kg Hanging Counterweight		192 010 kg Hanging Counterweight		271 840 kg Hanging Counterweight		Oper. Rad. m
			Minimum Boom Capacity To Swing and Travel Kilograms	Boom Capacity Kilograms	Minimum Boom Capacity To Swing and Travel Kilograms	Boom Capacity Kilograms	Minimum Boom Capacity To Swing and Travel Kilograms	Boom Capacity Kilograms	
18.3	82.5	117.8	198 000	341 500*					18.3
20.0	81.6	117.6	170 300	336 000*	280 900	341 500*			20.0
22.0	80.6	117.2	144 300	300 200*	242 800	341 500*			22.0
24.0	79.6	116.9	123 300	271 500*	212 300	325 700*			24.0
26.0	78.6	116.5	105 900	247 000*	187 100	294 800*	268 400	340 400*	26.0
28.0	77.6	116.0	91 300	226 000*	166 000	270 500*	240 700	315 200*	28.0
30.0	76.6	115.5	78 900	207 600*	148 000	249 200*	217 100	290 800*	30.0
32.0	75.5	115.0	68 200	191 500*	132 500	230 600*	196 800	269 700*	32.0
34.0	74.5	114.4	59 000	177 100*	119 000	214 100*	179 100	250 900*	34.0
36.0	73.5	113.8	50 800	163 900*	107 100	199 400*	163 500	234 200*	36.0
38.0	72.4	113.2	43 500	152 100*	96 600	186 200*	149 700	219 200*	38.0
40.0	71.4	112.5	37 000	141 400*	87 200	174 200*	137 400	205 700*	40.0
42.0	70.3	111.8	31 200	131 800*	78 800	163 500*	126 400	193 400*	42.0
44.0	69.3	111.0	25 900	123 100*	71 200	153 600*	116 500	182 200*	44.0
46.0	68.2	110.2	21 200	115 200*	64 300	144 600*	107 500	172 000*	46.0
48.0	67.1	109.4	16 800	107 900*	58 000	136 300*	99 200	162 600*	48.0
50.0	66.1	108.5	12 800	101 200*	52 200	128 700*	91 700	153 900*	50.0
52.0	65.0	107.6	9 200	95 000*	46 900	121 700*	84 700	145 900*	52.0
54.0	63.9	106.6	5 700	89 300*	42 100	115 000*	78 400	138 500*	54.0
56.0	62.8	105.5	2 600	84 000*	37 500	108 700*	72 400	131 600*	56.0
58.0	61.6	104.4		79 100*	33 300	102 900*	67 000	125 200*	58.0
60.0	60.5	103.3		74 500*	29 400	97 500*	61 900	119 100*	60.0
62.0	59.3	102.1		70 200*	25 700	92 500*	57 100	113 500*	62.0
64.0	58.2	100.9		66 100*	22 300	87 700*	52 600	108 200*	64.0
66.0	57.0	99.6		62 300*	19 100	83 300*	48 400	103 200*	66.0
68.0	55.8	98.2		58 700*	16 100	79 100*	44 500	98 600*	68.0
70.0	54.6	96.8		55 300*	13 300	75 100*	40 800	94 100*	70.0
74.0	52.1	93.7		49 100*	8 100	67 800*	34 000	85 900*	74.0
78.0	49.5	90.4		43 500*	3 400	61 200*	27 900	78 600*	78.0
82.0	46.8	86.7		38 500*		55 300*	22 500	71 900*	82.0
86.0	44.0	82.7		33 700*		49 900*	17 500	65 800*	86.0
90.0	41.0	78.2		28 500*		45 000*	12 900	60 300*	90.0
94.0	37.9	73.2		23 600*		40 500*	8 700	55 100*	94.0
98.0	34.5	67.6		19 200*		36 300*	4 900	50 400*	98.0
102.0	30.7	61.2				32 400*	1 300	45 900*	102.0

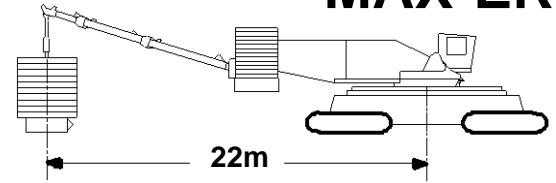


Liftcrane Boom Capacities

Boom No. 80 with 42.7m Mast No. 81
208 060 kg Crane Counterweight
90 720 kg Carbody Counterweight
0 kg Thru 511 330 kg Hanging Counterweight
at 22m Position
Narrow or Wide Crawler Arrangement - 360 Degree Rating

Meets
ANSI B30.5
Requirements

**21000
MAX-ER**



115.8m (380 Ft.) Boom

Oper. Rad. m	Boom Ang. Deg.	Boom Point Elev. m	351 670 kg Hanging Counterweight		431 500 kg Hanging Counterweight		511 330 kg Hanging Counterweight		Oper. Rad. m
			Minimum Boom Capacity To Swing and Travel Kilograms	Boom Capacity Kilograms	Minimum Boom Capacity To Swing and Travel Kilograms	Boom Capacity Kilograms	Minimum Boom Capacity To Swing and Travel Kilograms	Boom Capacity Kilograms	
18.3	82.5	117.8							18.3
20.0	81.6	117.6							20.0
22.0	80.6	117.2							22.0
24.0	79.6	116.9							24.0
26.0	78.6	116.5							26.0
28.0	77.6	116.0							28.0
30.0	76.6	115.5							30.0
32.0	75.5	115.0							32.0
34.0	74.5	114.4	239 200	287 700*					34.0
36.0	73.5	113.8	220 000	269 000*					36.0
38.0	72.4	113.2	203 000	252 200*					38.0
40.0	71.4	112.5	187 700	237 000*					40.0
42.0	70.3	111.8	174 100	223 300*					42.0
44.0	69.3	111.0	161 800	210 800*					44.0
46.0	68.2	110.2	150 600	199 300*					46.0
48.0	67.1	109.4	140 500	188 800*	181 800	215 100*			48.0
50.0	66.1	108.5	131 200	179 200*	170 600	204 300*			50.0
52.0	65.0	107.6	122 600	170 200*	160 400	194 400*			52.0
54.0	63.9	106.6	114 700	161 900*	151 100	185 200*			54.0
56.0	62.8	105.5	107 400	154 200*	142 400	176 700*			56.0
58.0	61.6	104.4	100 600	146 900*	134 300	168 700*			58.0
60.0	60.5	103.3	94 300	140 200*	126 800	161 200*			60.0
62.0	59.3	102.1	88 400	133 900*	119 800	154 300*			62.0
64.0	58.2	100.9	82 900	128 000*	113 300	147 700*			64.0
66.0	57.0	99.6	77 800	122 400*	107 100	141 600*			66.0
68.0	55.8	98.2	72 900	117 100*	101 400	135 700*	129 900	154 400*	68.0
70.0	54.6	96.8	68 400	112 200*	96 000	130 300*	123 500	148 300*	70.0
74.0	52.1	93.7	60 000	103 100*	86 000	120 200*	112 000	137 300*	74.0
78.0	49.5	90.4	52 500	94 800*	77 100	111 100*	101 700	127 300*	78.0
82.0	46.8	86.7	45 700	87 400*	69 100	102 800*	92 400	118 300*	82.0
86.0	44.0	82.7	39 600	80 600*	61 800	95 300*	84 000	110 100*	86.0
90.0	41.0	78.2	34 000	74 400*	55 200	88 500*	76 300	99 400*	90.0
94.0	37.9	73.2	28 900	68 700*	49 100	82 200*	69 300	87 800*	94.0
98.0	34.5	67.6	24 100	63 500*	43 500	76 100*	62 800	76 300*	98.0
102.0	30.7	61.2	19 800	58 600*	38 200	65 200*	56 800	65 200*	102.0