

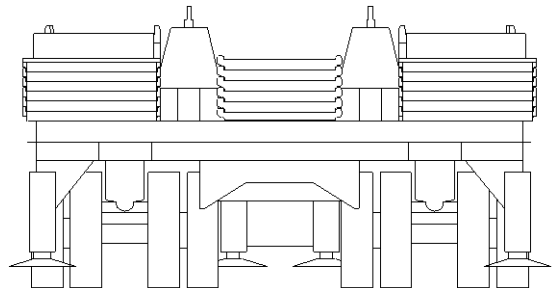
Counterweight Arrangements

Wheeled Counterweight Assembly with Flat Boxes
No. 195826

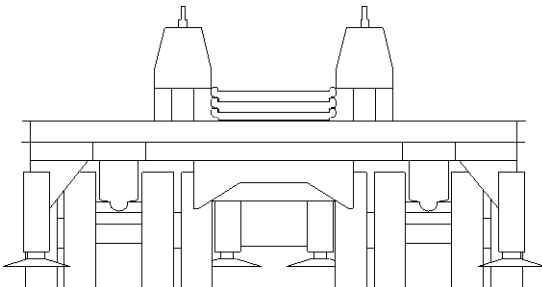
MAX-ER 2000 On 2250



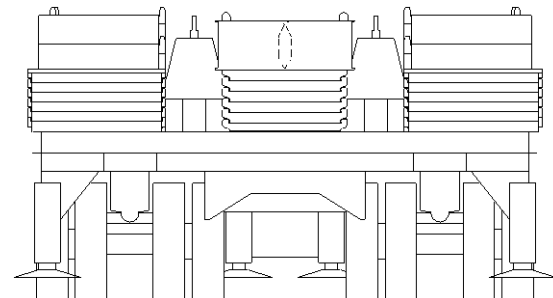
0 Lb. (0 kg) Wheeled Counterweight



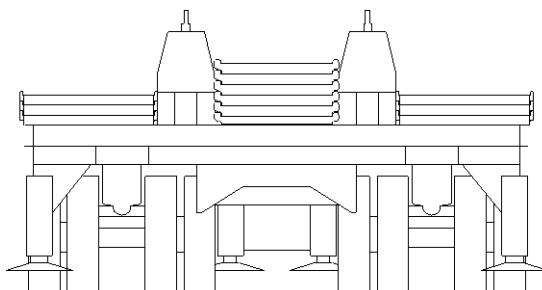
362,000 Lb. (164 200 kg) Wheeled Counterweight
14 Side Boxes With 4 Adapter Plates
6 Center Boxes



120,000 Lb. (54 430 kg) Wheeled Counterweight
3 Center Boxes



462,000 Lb. (209 560 kg) Wheeled Counterweight
16 Side Boxes With 4 Adapter Plates
10 Center Boxes



240,000 Lb. (108 860 kg) Wheeled Counterweight
6 Side Boxes - 6 Center Boxes

Refer to Counterweight Assembly for box weights.

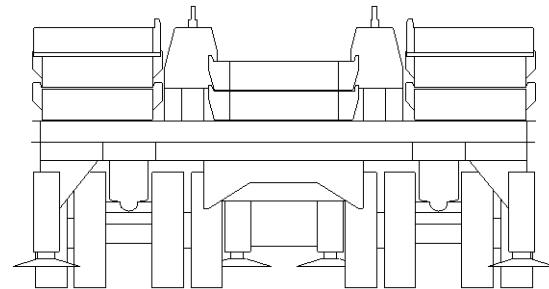
Counterweight Arrangements

MAX-ER 2000 On 2250

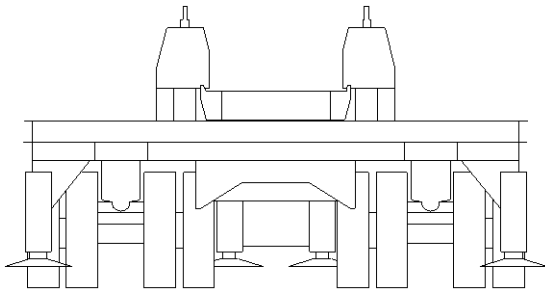
Wheeled Counterweight Assembly
No. 194353



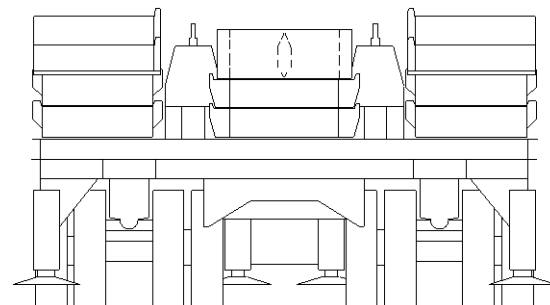
0 Lb. (0 kg) Wheeled Counterweight



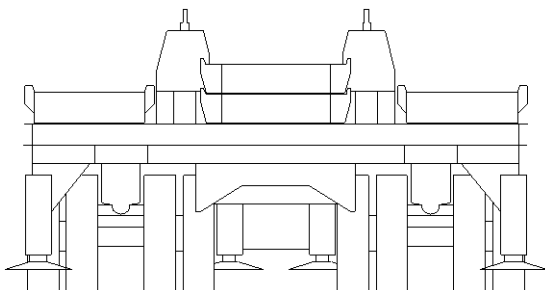
362,000 Lb. (164 200 kg) Wheeled Counterweight
10 Side Boxes With 4 Adapter Plates
4 Center Boxes



120,000 Lb. (54 430 kg) Wheeled Counterweight
2 Center Boxes



462,000 Lb. (209 560 kg) Wheeled Counterweight
12 Side Boxes With 4 Adapter Plates
8 Center Boxes



240,000 Lb. (108 860 kg) Wheeled Counterweight
4 Side Boxes - 4 Center Boxes

Refer to Counterweight Assembly for box weights.