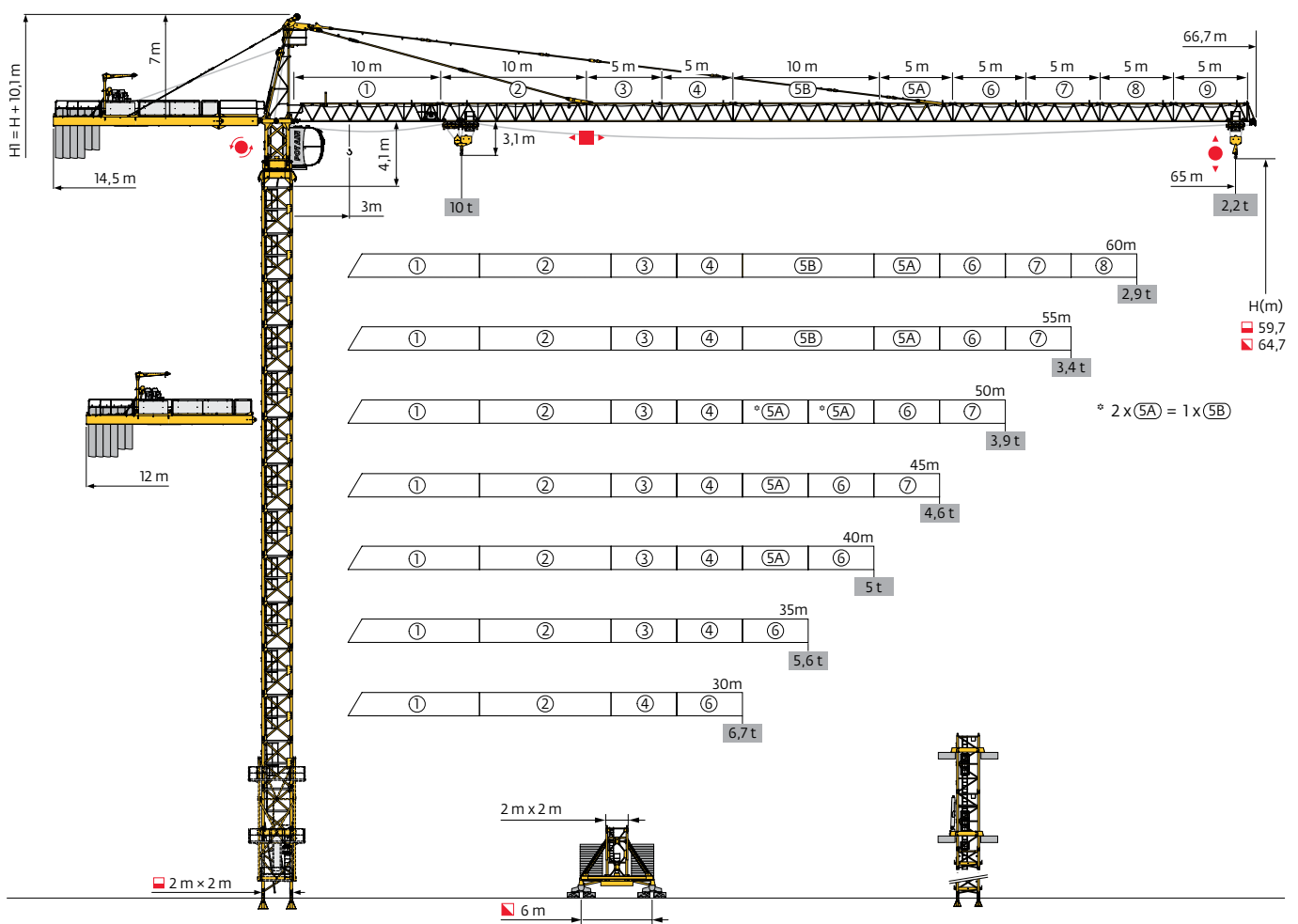


MC 系列

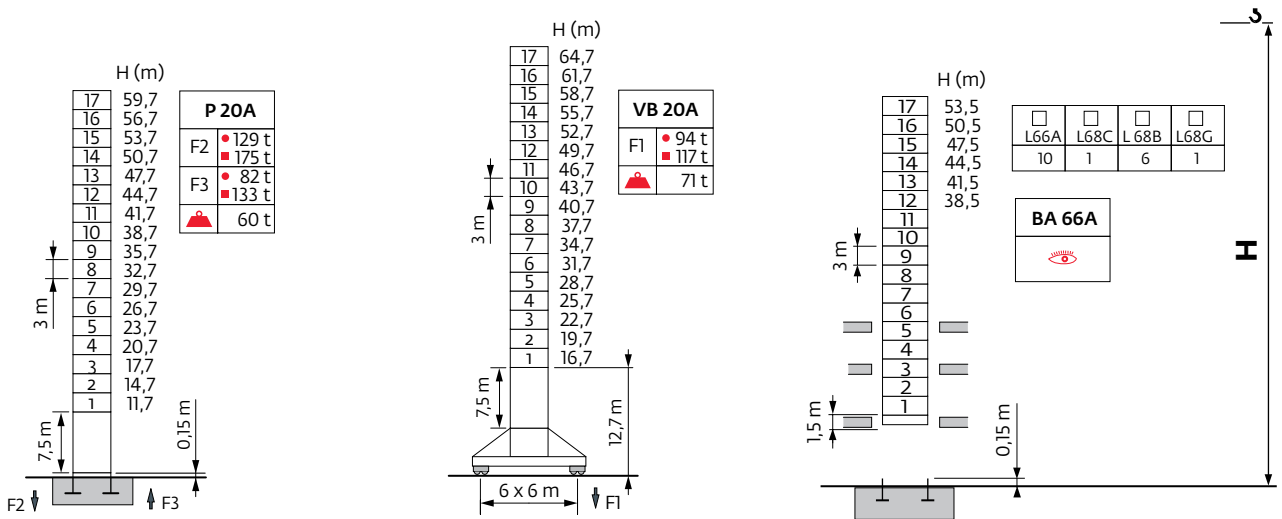
MC 230C



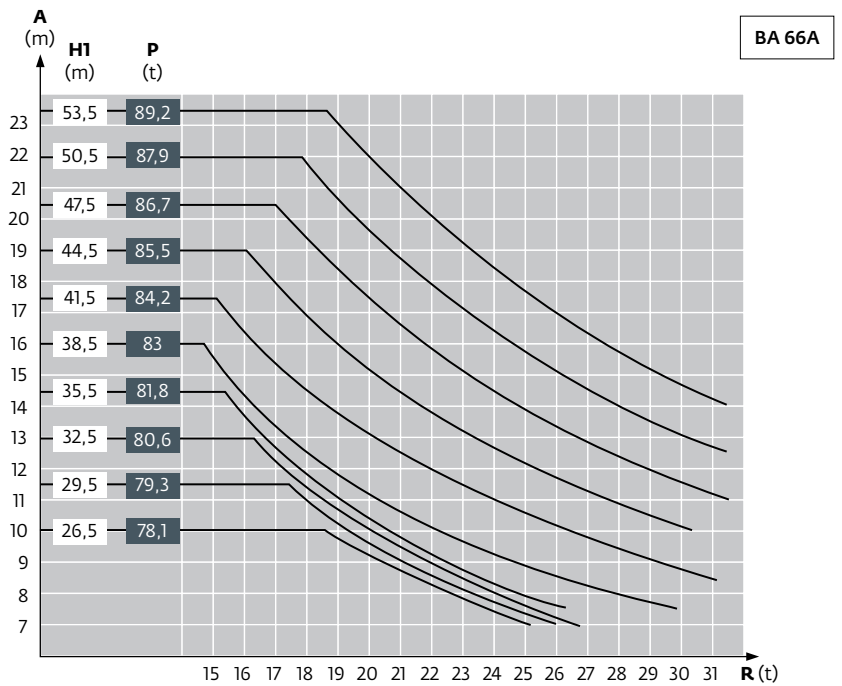
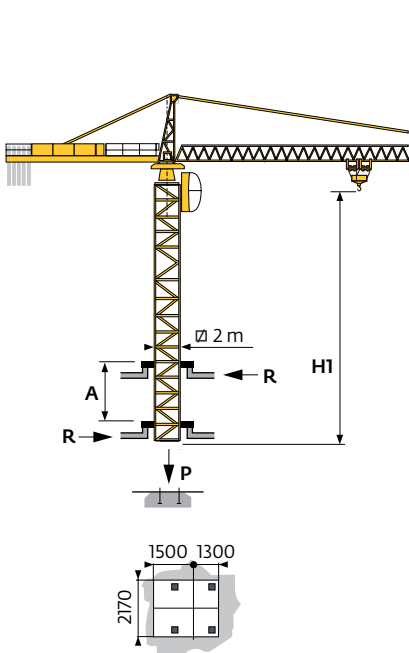
塔身组成 - 反力

□ 2 m

▲▲ 30 m → 65 m

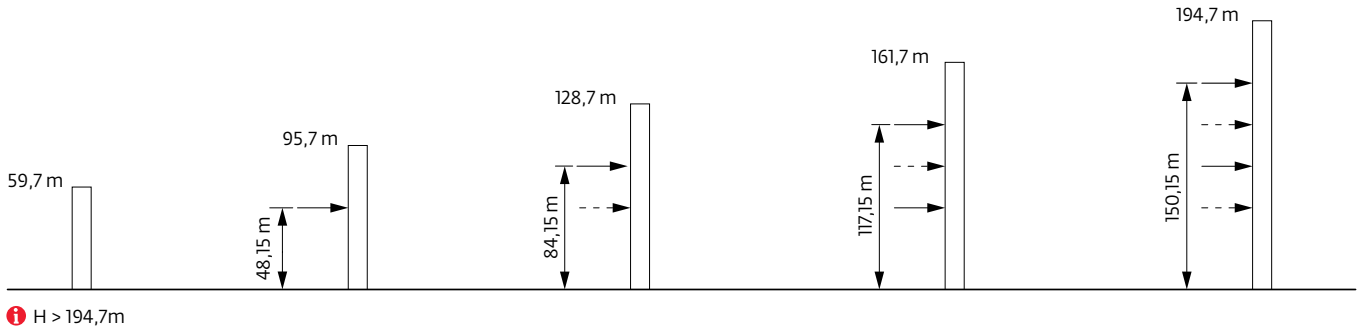


内爬塔机



附着

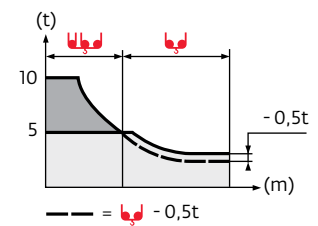
P 20 A AL 600






负荷曲线









65 m	3	▶	16,9	17	20	22	25	27	30	32,9	33	35	37	40	42	45	47	50	52	55	57	60	62	65	m
▲▼▲▼			10	9,9	8,2	7,3	6,3	5,7	5	5	4,6	4,4	4	3,8	3,5	3,3	3,1	2,9	2,7	2,6	2,45	2,35	2,2		t
60 m	3	▶	19,3	20	22	25	27	30	32	34,5	37,8	38	40	42	45	47	50	52	55	57	60				m
▲▼▲▼			10	9,6	8,6	7,4	6,8	5,9	5,5	5	5	4,7	4,4	4,1	3,9	3,6	3,4	3,2	3,1	2,9					t
55 m	3	▶	20,2	22	25	27	30	32	35	36,1	39,5	40	42	45	47	50	52	55							m
▲▼▲▼			10	9,1	7,8	7,1	6,3	5,8	5,2	5	4,9	4,7	4,3	4,1	3,8	3,6	3,4								t
50 m	3	▶	20,6	22	25	27	30	32	35	36,9	40,3	42	45	47	50										m
▲▼▲▼			10	9,3	8	7,3	6,4	6	5,3	5	4,8	4,4	4,2	3,9											t
45 m	3	▶	21,4	22	25	27	30	32	35	37	38,2	41,8	45												m
▲▼▲▼			10	9,7	8,3	7,6	6,7	6,2	5,6	5,2	5	4,6													t
40 m	3	▶	21,4	22	25	27	30	32	35	37	38,4	40													m
▲▼▲▼			10	9,7	8,3	7,6	6,7	6,2	5,6	5,2	5														t
35 m	3	▶	21,4	22	25	27	30	32	35																m
▲▼▲▼			10	9,7	8,3	7,6	6,7	6,2	5,6																t
30 m	3	▶	21,4	22	25	27	30																		m
▲▼▲▼			10	9,7	8,3	7,6	6,7																		t



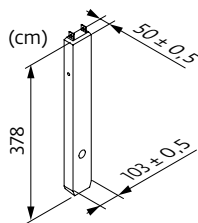
压重

 2 m	VB 20 A	H (m)	64,7	61,7	58,7	55,7	52,7	49,7	46,7	43,7	40,7	37,7	34,7	31,7	28,7	25,7	22,7	19,7	16,7	13,7
		 (t)	108	84	72	60	48	36	36	36	36	36	36	36	36	36	36	36	36	36

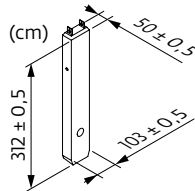
起重臂重量&平衡臂配重

			75 LVF / 60 LVF 			 (kg)
			4200 kg	3400 kg	2300 kg	
65 m	7785	8210	4	2	0	23 600
60 m	7500	7925	3	2	1	21 700
55 m	7175	7600	4	1	0	20 200
50 m	6535	6960	4	2	0	23 600
45 m	6245	6670	3	2	1	21 700
40 m	5850	6275	3	2	0	19 400
35 m	5355	5780	4	0	0	16 800
30 m	4710	5135	2	1	1	14 100

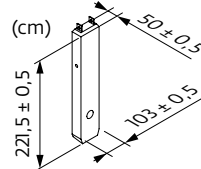
CA - 4200 kg



CR - 3400 kg

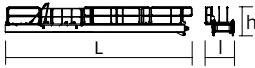
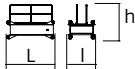
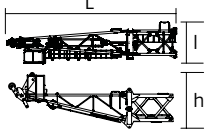
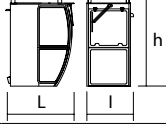
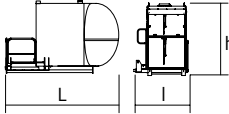
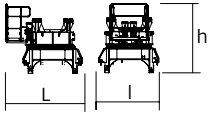
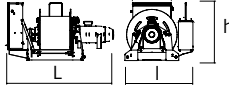
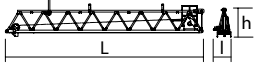
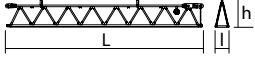
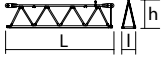
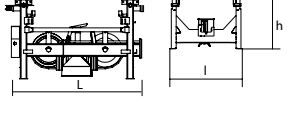
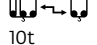


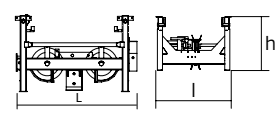
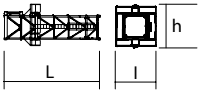
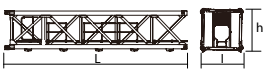
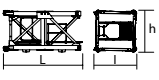
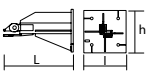
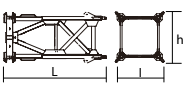
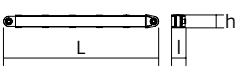
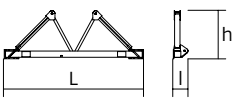
CS - 2300 kg



尺寸重量表

塔机回转部分 :  65 m -  -  -  75 LVF

塔机回转部分	L (m)	l (m)	h (m)	kg (+/- 5%)		
平衡臂	 L	11,31	2,01	2,23	4120	
	 L h	2,89	1,58	1,7	800	
塔帽	 L l h	9,54	1,77	2,88	4410	
驾驶室	 L l h	Smartview 胜景舱	1,68	1,18	2,31	385
驾驶室	 L l h	V140S 太空舱	3,4	1,9	2,57	1130
回转机构	 L l h	□2 m	2,92	2,5	2,73	5120
起升机构	 L l h	60 LVF 75 LVF	1,94 2,48	2,37 1,62	1,35 1,4	2065 2520
	起重臂根部节	 L l h	① 6 D3 V4	10,22	1,93	1,18
起重臂节	 L l h	② 5B	10,25 10,23	1,38 1,38	1,17 1,17	1345 930
	起重臂节	 L l h	③	5,23	1,38	1,15
④			5,23	1,38	1,14	645
5A			5,23	1,38	1,14	495
⑥			5,2	1,38	1,14	530
⑦			5,17	1,38	1,13	395
⑧			5,15	1,38	1,1	325
⑨	5,15	1,38	1,1	285		
后小车	 L l h	 10t	1,64	1,64	0,97	270

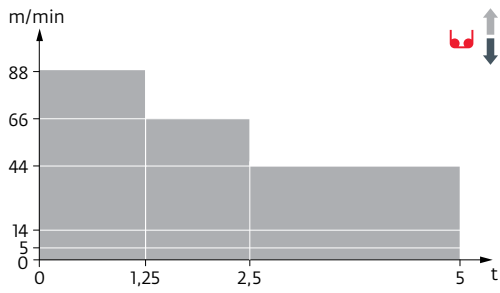
塔机回转部分		L (m)	l (m)	h (m)	kg (+/- 5%)	
前小车		1,83	1,64	0,97	290	
吊钩		1,38 0,92	0,26 0,22	1,4 1,41	350 195	
顶升装置						
顶升套架		7,3	3,98	3,78	4605	
塔身节						
S 68 J		7,74	2,1	2,1	4170	
L 66 A3 L 68 B3		3,26 3,26	2,12 2,12	2,12 2,12	1410 1530	
塔机底座						
固定支脚		P 20A - Ø65 R 20A - Ø65	1,4 0,81	0,6 0,6	300 225	
行走基节		VB 20 A	5,07	2,39	2,39	4360
斜撑		VB 20 A	4,51	0,26	0,27	390
底架		VB 20 A	6,7	0,7	2,31	1600

机构

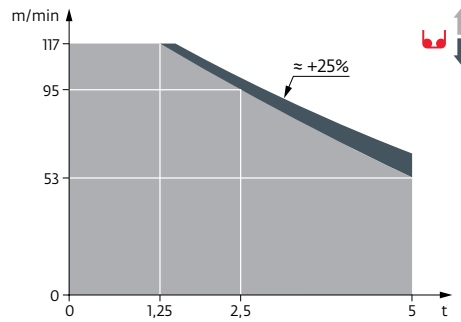
380 V - 50 Hz													hp	kW	
	60 LVF 25	m/min	5	14	44	66	88	2,6	7	22	33	44	60	45	500m
		t	5	5	5	3,75	2,5	10	10	10	7,5	5			
	75 LVF 25 Optima	m/min	53	68	95	117	26,5	34	47,5	58,5	75	55	895 m		
		t	5	3,75	2,5	1,25	10	7,5	5	2,5					
	6 D3 V4	m/min	10 - 50 (10 t) - 100 (5 t)									6	4,4		
	RCV185	rpm	0 → 0,8									2x9	2x6,6		
	VB20A RT 544 A1 2V R ≥ 13 m	m/min	13,5 → 27									4x7	4x5,2		


















CEI 38 IEC 38	kVA
380 V (+10% -10%) 50 Hz	60 LVF : 69 kVA → 45 kVA 75 LVF : 78 kVA


60 LVF 25



75 LVF 25 Optima



-  上绕度
-  工作状态下的反力
-  非工作状态下的反力
-  起重机在无载荷、无配重、独立高度状态下的压重
-  总配重
-  13.4m卡车
-  40"立方集装箱
-  坚固的附着框
-  松开的附着框
-  起升
-  变幅
-  回转
-  行走
-  额定功率
-  电源控制功能：使“起升”速度与可用电源适配
-  参阅内爬
-  联系我们

 此商业文件不承担法律责任，对于任何技术信息，请查阅相应说明书。



马尼托瓦克起重设备（中国）有限公司

工厂地址：江苏省张家港市经济开发区（南）区金塘路55号
 市场总部：上海市漕溪北路333号中金国际广场B座1103-1105室
 总机：021-6457 0066
 传真：021-6457 4985
 邮编：200030