

# POTAIN®

## Training Catalog 2026

Zhangjiagang, China



# Contacts

**Chen, Tao**

**[Tao.Chen@manitowoc.com](mailto:Tao.Chen@manitowoc.com)**

Tel: +86 512 80616600 ext. 5219

**Zhang, Yuanxiong**

**[Yuanxiong.Zhang@manitowoc.com](mailto:Yuanxiong.Zhang@manitowoc.com)**

Tel: +86 512 80616600 ext. 5220





# Training Center Objectives

## Location

- Our Zhangjiagang, China training facility offers extensive hands-on training labs. These labs have been designed to equip technicians with the necessary skills and technical knowledge in crane safety, erection, operation, and troubleshooting.

## Our Certifications

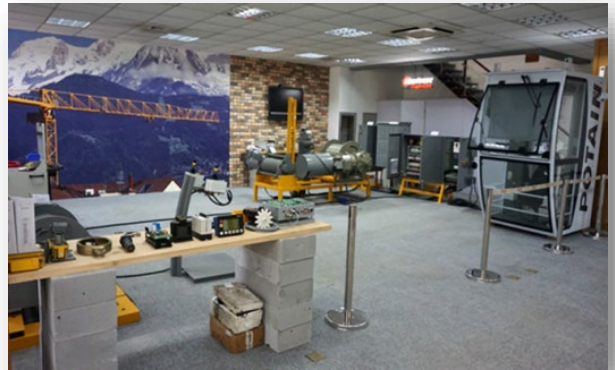
- Manitowoc certification will be provided upon successful completion of the courses.

## Our Global Offer

- Crane operation, crane technology, crane diagnostics, crane erection, crane maintenance, crane safety, or other requested course according to your needs.

## Training Equipment

- MCH125 training crane
- Hoisting mechanisms:  
33PC,70RCS,40LVF, 50LVF, 75LVF  
100LVF
- Slewing mechanisms:  
RCV145,RCV185,RVF152/162
- Trolley & Luffing mechanisms:  
4D3V3,DVF,40VVH
- Cabin (V140S) with Visu II and Datalogger



## Registration:

You will find enclosed "registration purchase order" form which must be completed and returned to the training centers for confirmation. Trainees must be over 18 years old.

We, *MANITOWOC*, deny responsibility for accidents and/or illnesses that might occur during the training courses. We therefore request, that you cover your trainees against any kind of risks and provide them with the necessary insurance certificates and forms.

# Training Arrangements

**Cost:**

Refer to training schedule.  
Please note that the cost of training excludes hotel accommodations, meals, and transportation.

**Trainee’s Journey:**

Please inform the training centers of the trainees’ travel arrangements.

**Clothing:**

Our training programs may involve numerous practical exercises outside/in the field. For the practical training, trainees should bring working clothes, gloves and steel-capped shoes are needed. We will arrange safety glasses, helmets, and other PPEs, as necessary.

**Cancellation:**

In case of cancellation, please inform the training Center immediately to avoid extra charges.

**Course Summary:**

Course Name	Description
<b>Tower Crane</b>	
E. POTAIN 1	Commissioning
E. POTAIN 2	Repair for smaller cranes under MCT275
E. POTAIN 3	Repair for bigger cranes
E. POTAIN CONVERTER	Special for converter diagnosis
E. POTAIN HYDRAULIC LUFFING	Special for MCH cranes
E. POTAIN ERECTION	Special for crane erection



# E POTAIN 1

**POTAIN®**

## Aim of the Course:

To learn the basic commissioning and setting of Potain cranes.

## Program:

- Potain Crane Introduction
- Potain Mast Introduction
- Potain Mechanisms Introduction
- Potain Crane Operation
- Load curve of tower crane principle
- How to adjust the safety devices:
  - ① Description and location;
  - ② Working principle;
  - ③ Adjustment procedure: Limit switch, moment cutout, MSWL;
  - ④ Specific safety devices study and adjustment of brake and weather-vanning.



## Training Methods:

- Lectures and practical exercises\*
- Trouble-shooting, practical exercises\*

## Materials and Classrooms Used:

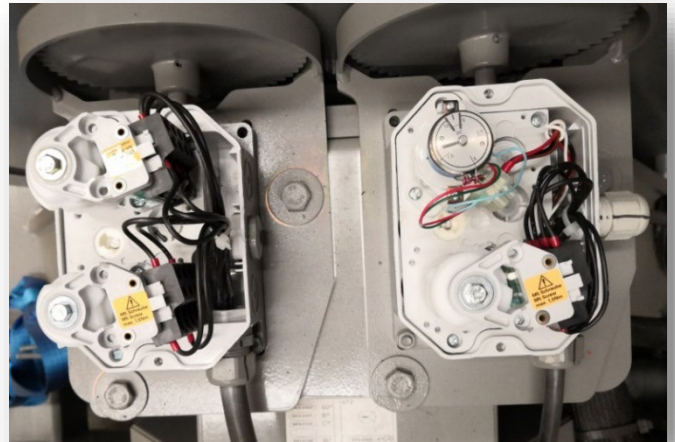
- Training room\*
- Technical documents
- Simulators or MCH125 crane\*

## Validation of Knowledge:

- Daily tasks and final test
- Presentation of certificate

## Dates :

- Per request
- This course is also available online



*\*Online sessions are limited to lectures, no practical exercises and simulator access.*

## Cost: Excluding Tax

- APAC: US\$1300/person
- Online: US\$800/person
- Special price for big groups and internal staff

## Prerequisites:

Basic electrical knowledge

## Duration:

In-person - 5 days  
Online – 3 days

## Capacity:

Minimum of 4 students. Max of 8 students for in-person trainings.





# E POTAIN 2

**POTAIN®**

## Aim of the Course:

To be able to carry out electrical repairs and troubleshooting for MC125/175, MCT138/188, etc.

## Program:

- Electrical Basic:
  - ① Technology, operation, and symbols of electric components;
  - ② Methods of measurement of electric quantities;
  - ③ Realization practices wiring;
- Introduction of 33PC or 40/60LVF or 55RCS Hoisting mechanism;
- Introduction of RCV Slewing mechanism;
- Introduction of D3V Trolley mechanism;
- Exercise of trouble shooting;
- PLC and frequency converter basic technology (Option).

## Training Methods:

- Lectures and practical exercises\*
- Trouble-shooting, practical exercises\*

## Materials and Classrooms Used:

- Training room\*
- Technical documents
- Mechanism Simulators\*

## Validation of Knowledge:

- Pretest
- Final test at the end of the training course
- Presentation of certificate

## Dates :

- Per request
- This course is also available online

*\*Online sessions are limited to lectures, no practical exercises and simulator access.*

## Cost: Excluding Tax

- APAC: US\$1300/person
- Online: US\$800/person
- Special price for big groups and internal staff

## Prerequisites:

The trainees must be validated in E POTAIN 1

## Duration:

In-person - 5 days  
Online - 3 days

## Capacity:

Minimum of 4 students. Max of 8 students for in-person trainings.



# E POTAIN 3

**POTAIN®**

## Aim of the Course:

- Have an advanced knowledge on the MC/MCR/MCT/MRH cranes with mechanisms controlled by frequency converters.
- To be able to troubleshoot crane failures and carry out adjustments on the mechanisms.

## Program:

- PLC and frequency converter basic technology
- Introduction of 75LVF/75LVFC /100LVF Hoisting mechanism
- Introduction of RVF Slewing mechanism
- Introduction of DVF/DVFC Trolley mechanism
- Adjustment of system Dialog **VISU** II or Datalogger
- Exercise of trouble shooting
- Study of the field problem cases

## Training Methods:

- Lectures and practical exercises\*
- Trouble-shooting, practical exercises\*

## Materials and Classrooms Used:

- Training room\*
- Technical documents
- Mechanism Simulators\*

## Validation of Knowledge:

- Pretest
- Final test at the end of the training course
- Presentation of certificate

## Dates :

- Per request
- This course is also available online

*\*Online sessions are limited to lectures, no practical exercises and simulator access.*

## Cost: Excluding Tax

- APAC: US\$1300/person
- Online: US\$800/person
- Special price for big groups and internal staff

## Prerequisites:

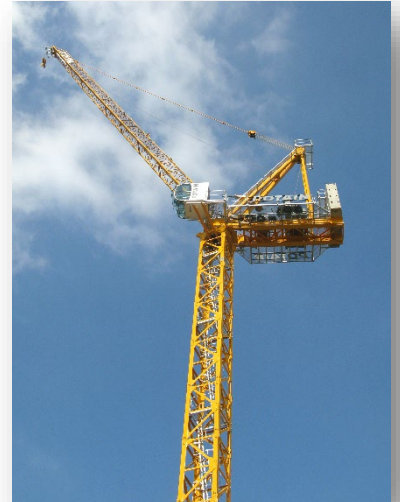
The trainees must be validated in E POTAIN 1 & 2

## Duration:

In-person - 5 days  
Online - 3 days

## Capacity:

Minimum of 4 students. Max of 8 students for in-person trainings.



# E POTAIN CONVERTER POTAIN®

## Aim of the Course:

- To learn proper diagnosis of converter failures;
- To be able to carry out basic trouble shooting on various converters.

## Program:

- In-depth study of every spare parts function of various converters including the following:
  - ① KEB converter
  - ② Schneider converter
  - ③ ABB converter
  - ④ Guide converter
- Dismantle and re-install the parts of various converters
- Trouble shooting exercises

## Training Methods:

- Lectures and practical exercises\*
- Trouble-shooting, practical exercises\*

## Materials and Classrooms Used:

- Training room\*
- Technical documents
- Mechanism Simulators\*

## Validation of Knowledge:

- Pretest
- Final test at the end of the training course
- Presentation of certificate

## Dates :

- Per request
- This course is also available online

*\*Online sessions are limited to lectures, no practical exercises and simulator access.*

## Cost: Excluding Tax

- APAC: US\$1600/person
- Online: US\$1000/person
- Special price for big groups and internal staff

## Prerequisites:

The trainees must be validated in E POTAIN 1, 2, & 3

## Duration:

In-person - 5 days  
Online – 3 days

## Capacity:

Minimum of 4 students. Max of 8 students for in-person trainings.





## E POTAIN HYDRAULIC LUFFING

### Aim of the Course:

- To have a basic knowledge of hydraulic systems.
- To be able to carry out hydraulic repairs on MCH cranes.

### Program:

- Hydraulic Basic;
- Introduction of 40VVH luffing mechanism;
- Replace luffing cylinder on the air (option);
- Exercise of trouble shooting.

### Training Methods:

- Lectures and practical exercises\*
- Trouble-shooting, practical exercises\*

### Materials and Classrooms Used:

- Training room\*
- Technical documents
- Mechanism Simulators & MCH125 crane\*

### Validation of Knowledge:

- Pretest;
- Final test at the end of the training course.
- Presentation of certificate.

### Dates :

- Upon request.
- This course is also available online

*\*Online sessions are limited to lectures, no practical exercises and simulator access.*

### Cost: Excluding Tax

- APAC: US\$1300/person
- Online: US\$800/person
- Special price for big groups and internal staff

### Prerequisites:

Basic knowledge of hydraulics. The trainees must be declared fit to work at great heights.

### Duration:

In-person - 5 days  
Online – 3 days

### Capacity:

Minimum of 4 students. Max of 8 students for in-person trainings.



# E POTAIN ERECTION & POTAIN® DISMANTLING

## Aim/Course Goals:

- To have a good knowledge of erection, commissioning, and dismantling of MC, MCH, MCT, and MCR cranes.
- To understand basic crane functions.
- To understand safety work in erection.

## Program:

- Tower crane range, Identification, technical specifications:
  1. Efforts operating the crane reactions to the supports.
  2. Crane introduction, crane range, identification.
  3. Technical data specifications.
- Tower crane safety
  1. Crane safety
  2. Basic slinging
  3. PPE (Personal protective equipment)
  4. Tower crane safety devices
- Erection procedures
  1. Erection planning
  2. Preparations and checks before crane erection
  3. Crane erection
  4. Adjustment of safety devices
- Principle of telescopic cage
  1. Basic hydraulics
  2. Preparation before telescoping
  3. Raising
  4. Hands on operation of telescopic cage

## Training Methods:

- Lectures and practical exercises\*
- Telescoping exercises\*
- Use of specific documents

## Materials and Classrooms Used:

- Training room\*
- Specific documents
- MCH125 Crane\*

## Validation of Knowledge:

- Final test at the end of the training course.
- Presentation of certificate.

## Dates :

- Upon request.
- This course is also available online

*\*Online sessions are limited to lectures, no practical exercises and simulator access.*

## Cost: Excluding Tax

- APAC: US\$1300/person
- Online: US\$800/person
- Special price for big groups and internal staff

## Prerequisites:

Basic knowledge of hydraulics. The trainees must be declared fit to work at great heights.

## Duration:

In-person - 5 days

Online – 3 days

## Capacity:

Minimum of 4 students. Max of 8 students for in-person trainings.



# Registration Form

**POTAIN®**

No. 39 JINTANG RD., ZHANGJIAGANG, JIANGSU, CHINA	
<b>PURCHASE ORDER - TRAINING REGISTRATION</b>	
P.O.Ref:	Date:
<b>COMPANY</b>	
Company Name:	
Address:	
Phone:	Email:
Billing Address:	
<b>TRAINING</b>	
Title of training course:	Date:
Location:	
Fee:	
<b>PARTICIPANT</b>	
Given Name:	First Name:
Email:	Phone:
Educational Qualification:	
Designation:	Experience: Month / Years
<b>TRAVEL INFORMATION</b>	
Hotel reservation required: Yes / No	Transfer - Training centre required: Yes / No
Flight details:	Arrival:
	Departure:
Transfer - Airport required: Yes / No	
<b>REMARKS</b>	
<b>PREVIOUS KNOWLEDGE / COMPLETED TRAINING/S</b>	
<b>SIGNATURE :</b>	<b>COMPANY</b>
<b>DATE:</b>	<b>SEAL</b>
<b>I/we here by the undersigned, declare that I have read &amp; Understood the terms and conditions</b>	





**POTAIN®**