



GROVE®

GHG220

PRELIMINARY Product Guide

ASME B30.5 Imperial 85%, Metric 85%



220 USt
(200 t)



43.0 ft – 185.0 ft
(13,1 m – 56,4 m)

GVW

340,900 lbs
(154 630 kg)



265.7 ft
(81 m)

GROVE GHC220

FEATURES

The GHC220 is the largest capacity telescoping crawler crane in the GROVE line-up. The GHC220 is a powerhouse for tough construction jobs. Perfect for bridge and infrastructure jobs, it delivers heavy-duty lifting power and exceptional reach with a boom length of 185 ft (56,4 m). Its telescopic crawler track and sturdy build keep it stable on rough terrain, while user-friendly controls make operation smooth and efficient across various projects.



Optimized Serviceability

Ensure maximum uptime with clearly arranged, easily accessible service points. Thoughtful component labeling simplifies navigation, allowing for quick identification and servicing. With cost-effective parts and streamlined processes, operators can confidently manage routine maintenance independently, reducing reliance on external support while maximizing productivity.



Precision Meets Ergonomics

Designed for ultimate ease and efficiency, the GHC220's operator cab delivers maximum comfort with conveniently placed joystick controls for precision handling. Featuring an air suspension seat, climate control, and a color monitor supporting up to four cameras, it ensures a smooth and controlled experience. Large windows provide excellent visibility, while ergonomic armrests and sound-absorbing materials minimize fatigue and noise. The cab tilts up to 20° for extended reach making long boom operations more comfortable than ever.



Streamlined Setup

The GHC220 is fully self-rigging and features frame mounted jacks for track installation and hydraulically installed counterweights.



Powerful Telescopic Boom

The GHC220 comes equipped with a robust six-section boom that extends up to 185 ft (56,4 m), offering lightweight stability and impressive lifting power—even at long reaches.

It excels across all boom lengths and handles inclinations up to 4°, making it great for rough terrain and pick-and-carry jobs. Need more reach? the optional 71.5 ft (21,8 m) offsettable swingaway extension provides a maximum tip height of 265.7 ft (81,0 m).



The world's most advanced crane service and support network

WORLDWIDE SUPPORT NETWORK

Manitowoc's customer service extends beyond any borders. Our locations span the globe, covering five continents. No matter where the job takes you, you have a business partner nearby.



PARTS

Locating the correct part quickly is vital to managing your operations. With Manitowoc Customer Support, the parts you need are just a phone call or click away.

LIFT SOLUTIONS

The Manitowoc Crane Lift Solutions Team is dedicated to helping customers with unique and customized applications for their Manitowoc cranes, regardless of product line.

TRAINING

Manitowoc Training Centers offer courses for operators and technicians across the globe to provide in-depth instruction on crane operation, maintenance, and troubleshooting procedures.

EnCORE

Manitowoc's EnCORE program maximizes your investment by rebuilding or repairing your crane to extend its life significantly. EnCORE also includes remanufactured parts.



MANITOWOC FINANCE

Manitowoc Finance gets you in the field with the right equipment by giving you access to flexible, affordable financing. With Manitowoc Finance, equipment can be acquired with virtually no cash outlay, and unlike traditional lending, our financial products don't affect bank lines of credit. Your capital resources remain intact for times when you need ready access to cash.

Competitive rates with flexible financing options and payment schedules put you in control.

Did you know? Manitowoc Finance can finance **used** Manitowoc cranes. You can also **trade-in** your used fleet for upgrade and get financed by Manitowoc Finance.





CONTENTS

8

Dimensions

12

Load Programs

13

Transport/Assembly

15

Working Range/Load Chart - Metric

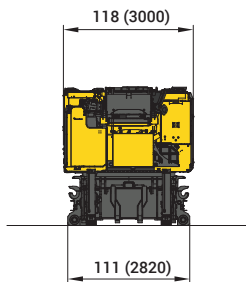
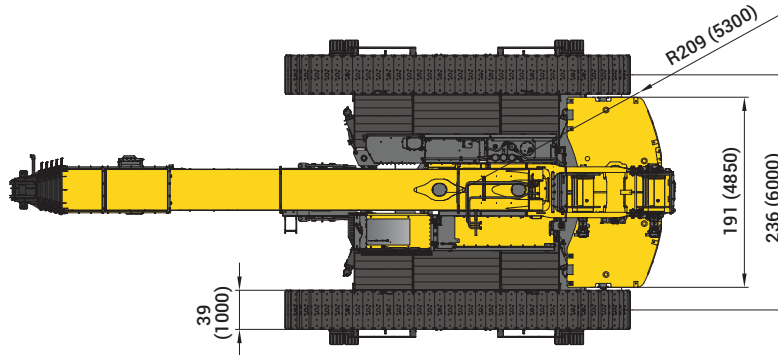
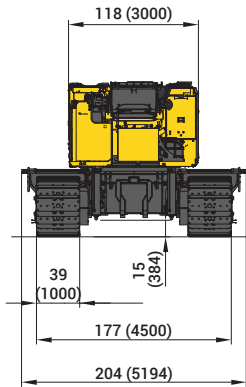
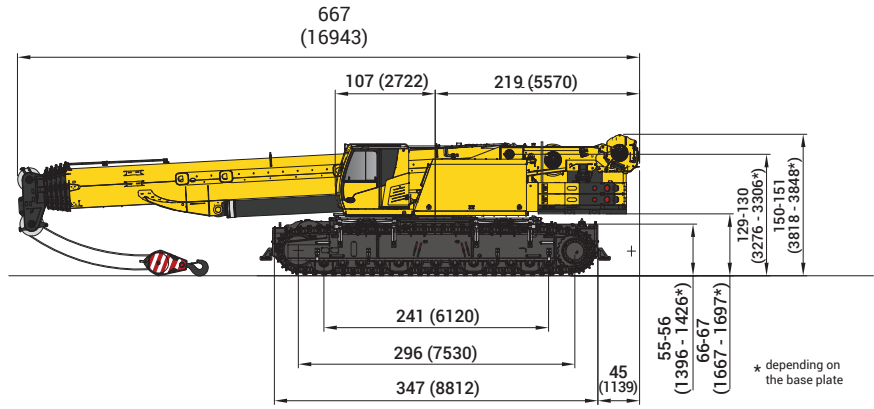
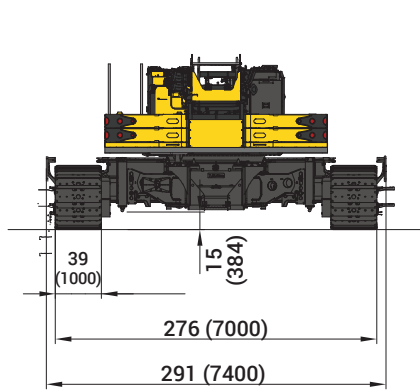
17

Working Range/Load Chart - Imperial

19

Specifications

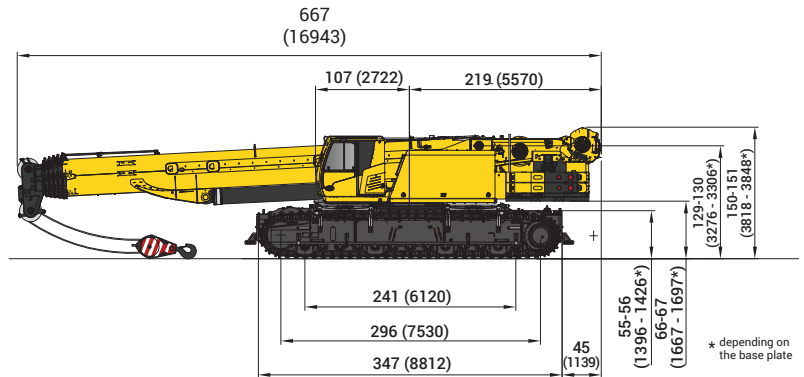
DIMENSIONS



TRANSPORTATION

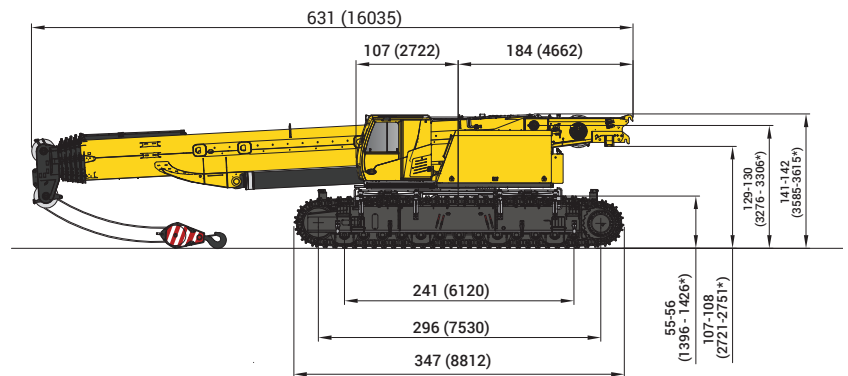
Operating weight: approximately 187.6 USt (170,2 t);
two winches, 110 USt (100 t) hook block, 3.3 ft (1.0 m)
double bar shoes, 16.5 USt (15 t) carbody counterweight,
62.4 USt (56,6 t) counterweight.

Dimensions (LxWxH):
56 ft x 17 ft x 12.6 ft (17 m x 5,2 m x 3,85 m)



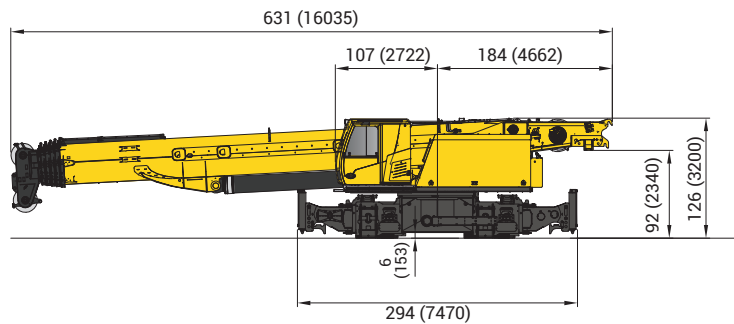
Operating weight: approximately 105.8 USt (96,0 t); one
winch, 110 USt (100 t) hook block, 3.3 ft (1.0 m) double
bar shoes, without counterweight.

Dimensions (LxWxH):
52.8 ft x 17 ft x 11.8 ft (16,1 m x 5,2 m x 3,6 m)



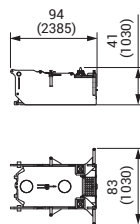
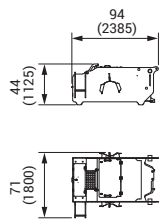
Operating weight: approximately 63.1 USt (57,2 t);
one winch, without counterweight, without track
wheel carrier

Dimensions (L x W x H):
52.8 ft x 9.8 ft x 10.5 ft (16,1 m x 3 m x 3,2 m)



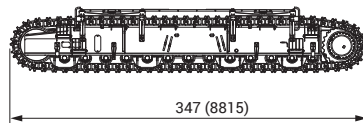
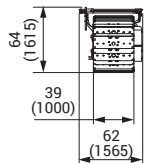
Dimensions shown in inches (mm)

TRANSPORTATION



Carbody Counterweight
x 2

16,535 lb
(7500 kg each)

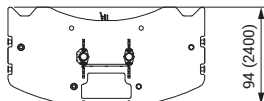
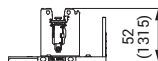
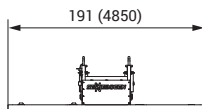


Crawler x 2

41,667 lb (18 900 kg)
1000 mm / double-bar

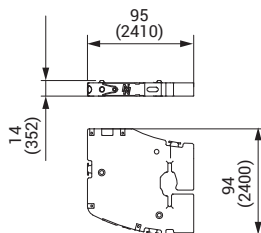
43872 (19900 kg)
1200 mm/ flat double-bar

47,399 lb (21500 kg)
1000 mm/ flat casted



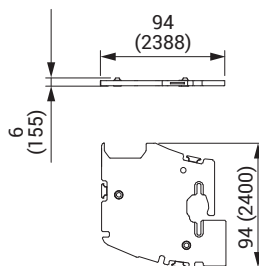
Base Plate for
Counterweight x 1

22046 lb
(10 000 kg)



Counterweight x 4

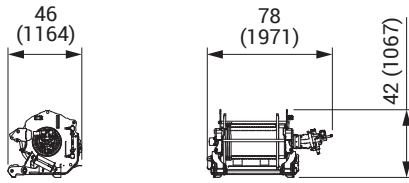
22046 lb
(10 000 kg)



Counterweight x 2

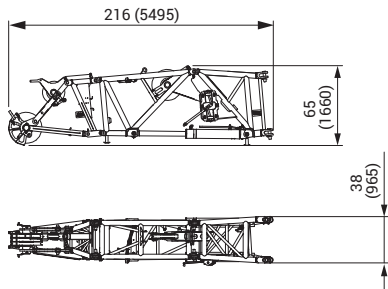
7275 lb
(3300 kg)

TRANSPORTATION



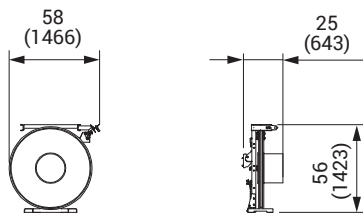
Auxiliary Winch

5732 lb
(2600 kg)



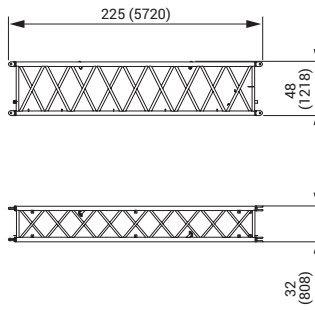
Fly Jib SLS

4409 lb
(2000 kg)



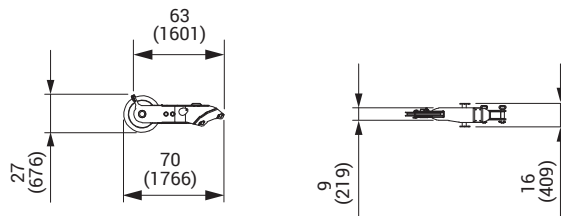
Hose Reel for
Hydraulic Jib

882 lb
(400 kg)



Fly Jib Extension
18.4 ft (5,6 m)

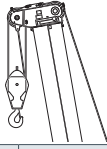
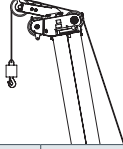
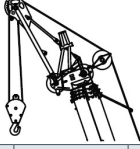
































1323 lb
(600 kg)














Auxiliary Jib / Runner
41.0 ft (12,5 m)

353 lb
(160 kg)

LOAD PROGRAMS

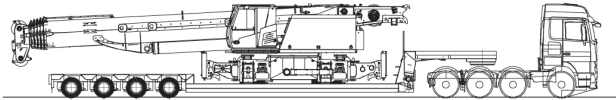
	Main boom			Auxiliary boom nose			Heavy Duty jib 10 ft (3 m)		
									
Undercarriage track width (centerline to centerline of crawlers)	 17.7 ft (5,4 m)	 13.8 ft (4,2 m)	 10.0 ft (3,1 m)	 17.7 ft (5,4 m)	 13.8 ft (4,2 m)	 10.0 ft (3,1 m)	 17.7 ft (5,4 m)	 13.8 ft (4,2 m)	 10.0 ft (3,1 m)
Counterweight									
 77,836 lb (35,3 t)	360° 	360° 	—	360° 	360° 	—	360° 	360° 	—
 46,966 lb (21,3 t)	360° 	360° 	—	360° 	360° 	—	360° 	360° 	—
 0 lb (0 t)	360° 	360° 	360° 	360° 	360° 	360° 	360° 	360° 	—

	Boom extension 26.3 ft (8 m)			Boom extension with fly jib 49.3 ft (15 m)		
						
Undercarriage track width (centerline to centerline of crawlers)	 17.7 ft (5,4 m)	 13.8 ft (4,2 m)	 10.0 ft (3,1 m)	 17.7 ft (5,4 m)	 13.8 ft (4,2 m)	 10.0 ft (3,1 m)
Counterweight						
 77,836 lb (35,3 t)	360° 	—	—	360° 	—	—

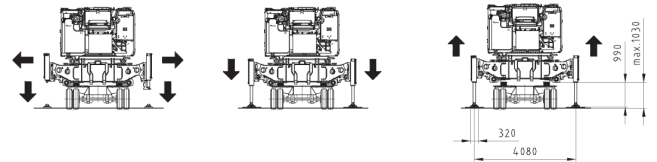
Note: Safe working loads are available for 0.3°, 1.5° and 4° inclines.

TRANSPORT/ASSEMBLY

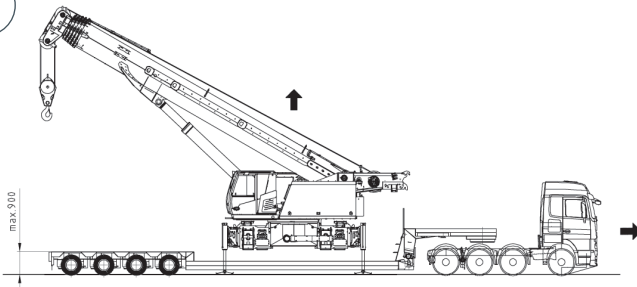
1



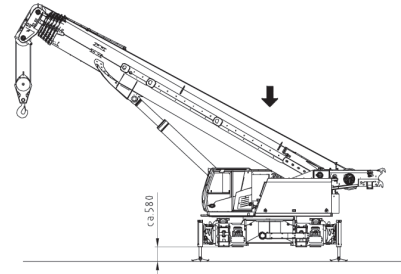
2



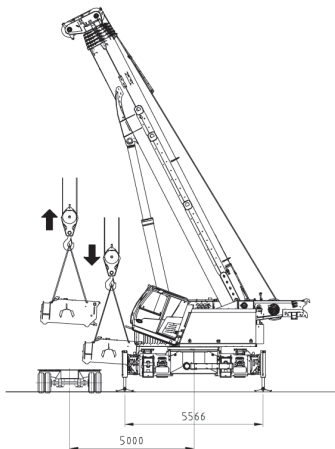
3



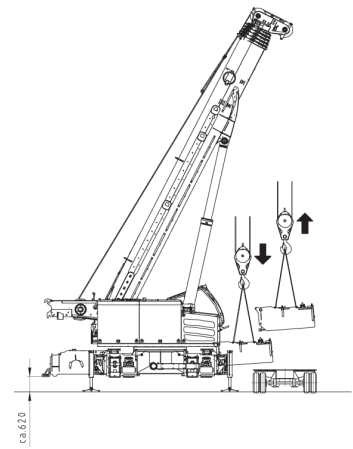
4



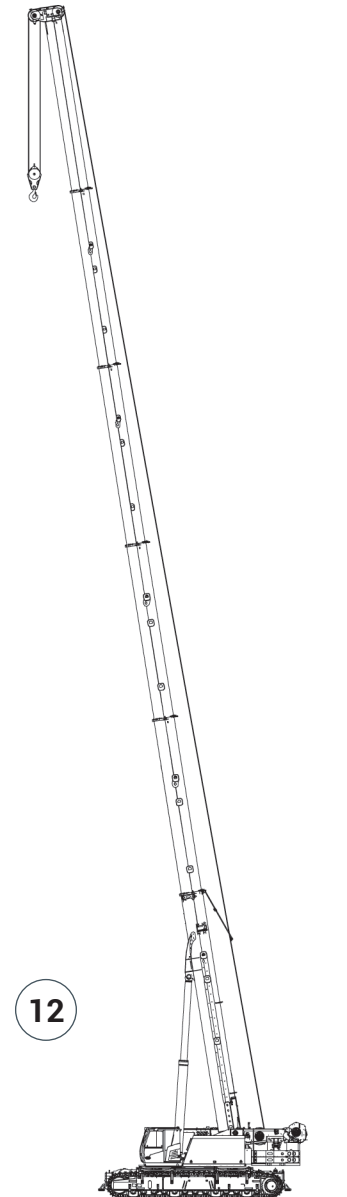
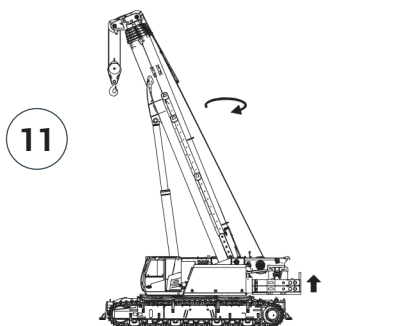
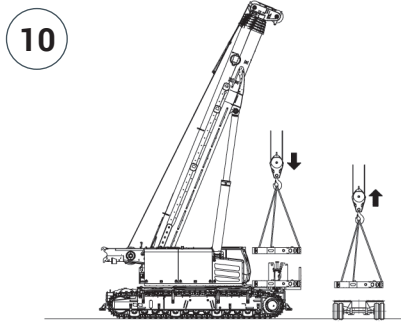
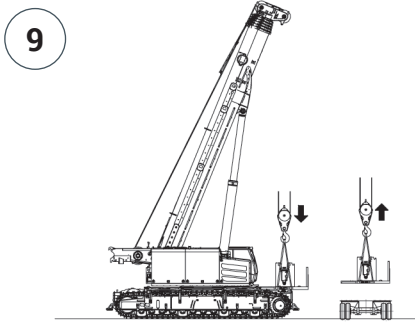
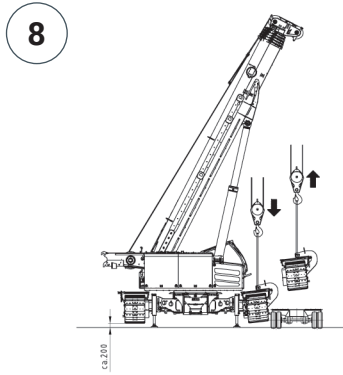
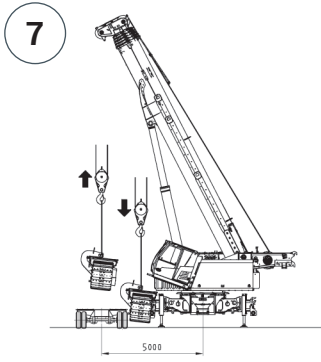
5



6

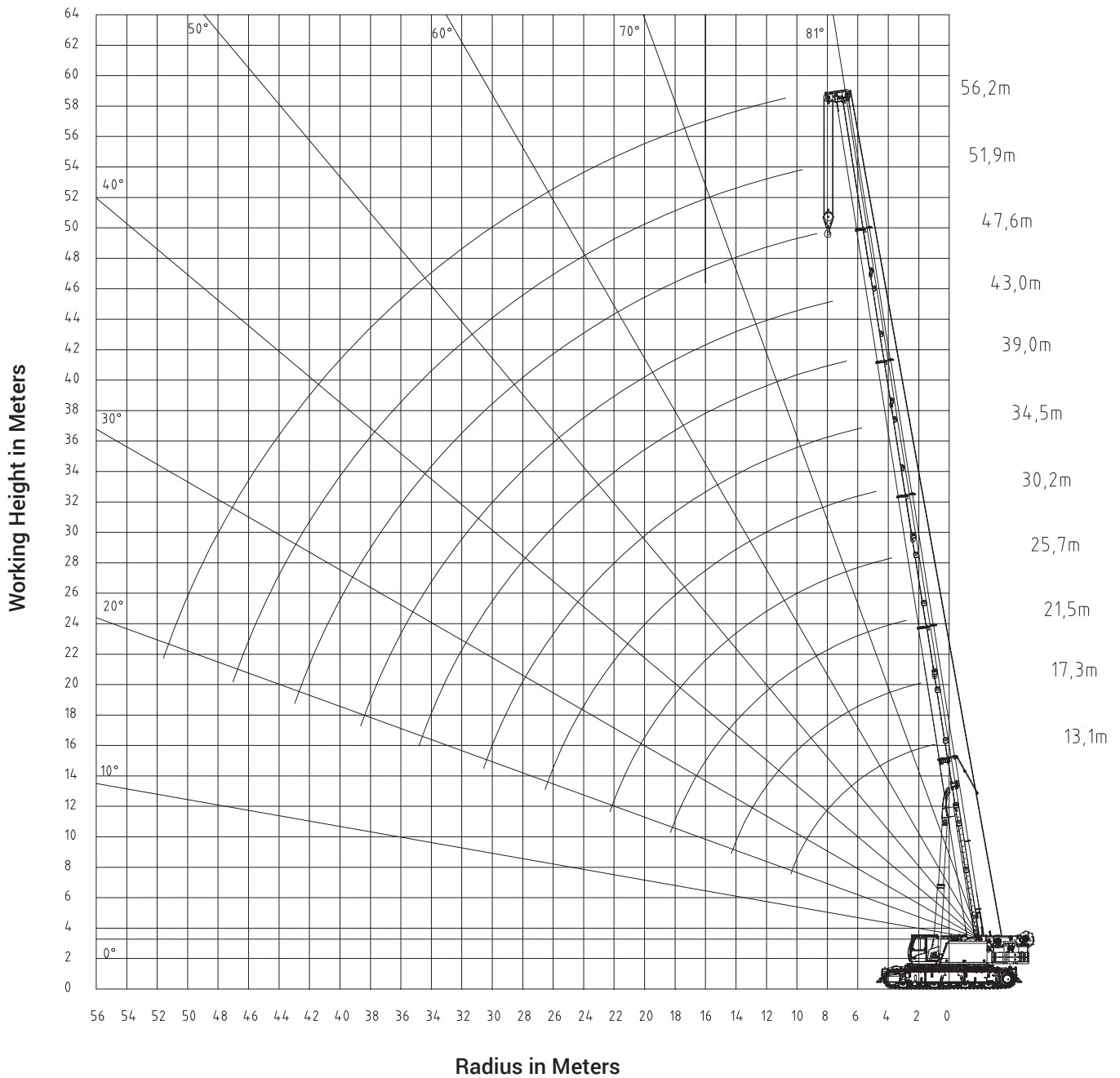


TRANSPORT/ASSEMBLY



WORKING RANGE

Main Boom - Metric 75%



THIS CHART IS ONLY A GUIDE AND SHOULD NOT BE USED TO OPERATE THE CRANE.
The individual crane's load chart, operating instructions and other instructional plates must be read and understood prior to operating the crane

LOAD CHART

Main Boom - Metric 75%



56,4 m



56,5 t



100%



360°



0.3°



Kilograms

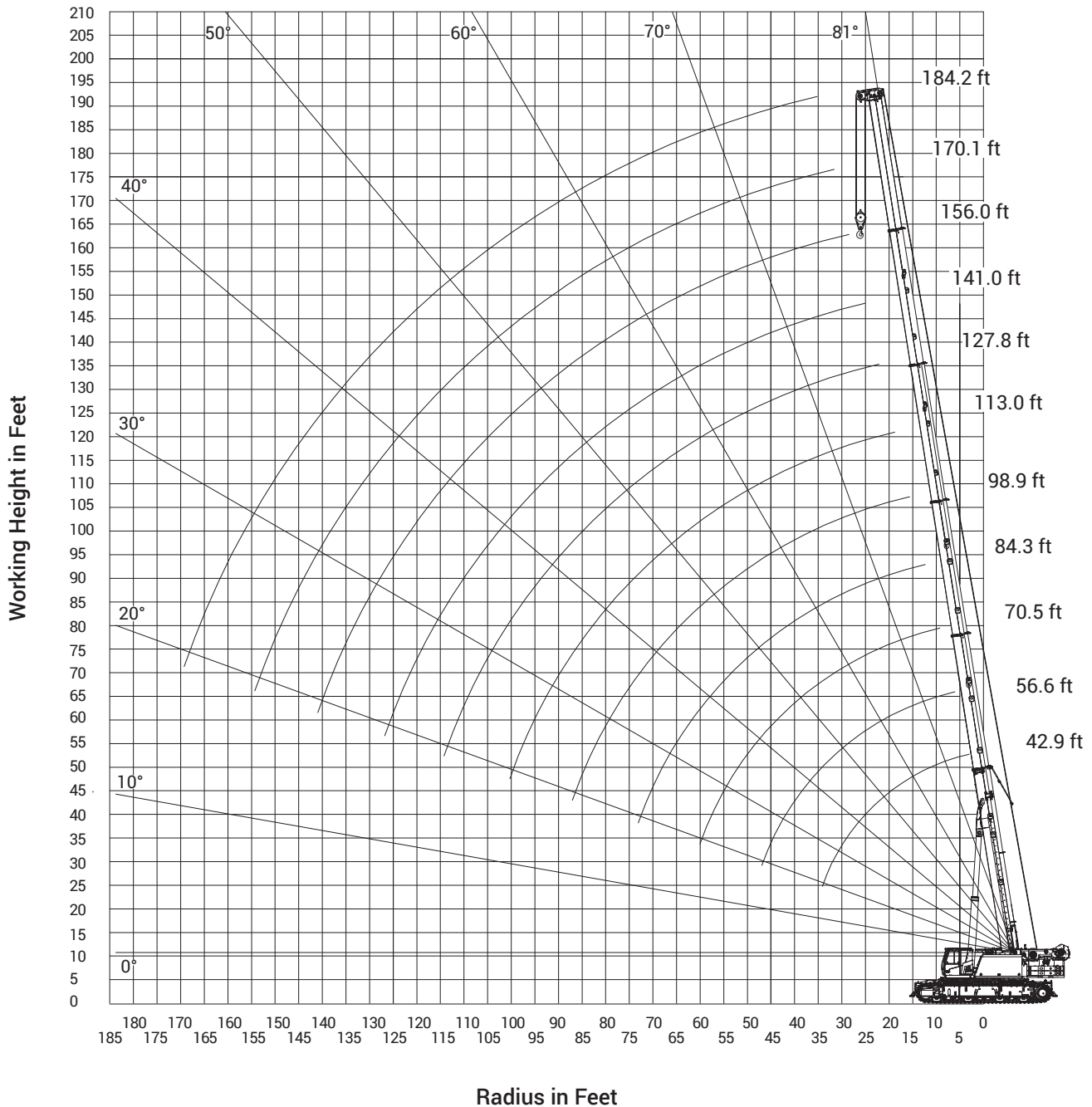
Meters	13.1	17,0- 17,4	20,3- 22,0	24,5- 26,0	27,8- 30,6	34,1- 35,3	38,4- 39,3	42,6- 44,1	47,5- 47,8	50,0- 51,9	54,0- 56,2
2.5	200.0*										
3.0	160.0	152.9	131.1	104.8							
4.0	144.4	137.2	118.9	101.5	86.3						
5.0	124.4	124.4	107.5	97.3	86.2	69.4					
6.0	108.3	110.0	99.0	89.4	78.4	68.4	50.2				
7.0	97.9	94.4	90.9	82.7	71.9	67.3	45.8	39.2			
8.0	85.1	85.0	82.1	77.4	66.0	64.4	41.5	36.9	29.4		
9.0	75.1	75.8	74.8	71.5	64.2	60.9	38.1	34.6	30.8	26.2	
10.0	66.5	67.3	67.3	65.4	63.1	57.8	35.7	32.2	29.1	25.2	21.7
11.0		59.1	59.5	59.1	57.9	55.2	33.6	30.5	27.4	24.2	20.9
12.0		51.7	52.0	51.8	51.0	51.4	32.0	28.8	26.0	23.2	20.2
13.0		45.7	46.1	45.8	46.6	45.9	30.4	27.1	24.7	22.2	19.5
14.0		40.9	41.3	41.9	41.9	41.1	29.0	25.8	23.4	21.2	18.7
15.0			37.2	38.2	37.8	36.8	27.7	24.5	22.3	20.2	18.1
16.0			33.8	34.8	34.3	33.6	26.5	23.4	21.3	19.2	17.4
17.0			31.2	31.8	31.3	30.6	25.5	22.4	20.3	18.4	16.7
18.0			28.3	29.2	28.8	28.0	24.4	21.5	19.4	17.5	16.0
19.0			26.1	27.0	26.6	25.8	23.5	20.6	18.6	16.6	15.4
20.0				25.1	24.6	23.8	22.6	19.8	17.8	15.9	14.7
21.0				23.3	22.9	22.1	21.8	19.0	17.0	15.2	14.1
22.0				21.8	21.3	20.5	21.1	18.2	16.4	14.4	13.5
23.0				20.0	19.9	19.1	19.9	17.5	15.7	13.8	13.0
24.0					18.7	18.3	18.7	16.9	15.1	13.2	12.6
25.0					17.6	17.7	17.5	16.3	14.6	12.6	12.3
26.0					16.5	17.2	16.4	15.7	14.0	12.1	11.7
27.0					13.8	16.2	15.5	15.1	13.5	11.5	11.0
28.0						15.3	14.6	14.6	13.1	11.0	10.5
29.0						14.5	13.8	13.9	12.7	10.6	10.1
30.0						13.8	13.0	13.1	12.3	10.2	9.6
31.0						11.5	12.3	12.4	11.9	9.8	9.2
32.0							11.7	11.8	11.6	9.5	8.9
33.0							11.3	11.3	11.2	9.2	8.5
34.0							11.0	10.8	10.7	8.9	8.2
35.0							10.6	10.3	10.2	8.6	7.8
36.0								9.8	9.7	8.4	7.5
37.0								9.3	9.2	8.1	7.2
38.0								8.9	8.8	7.9	6.9
39.0								8.5	8.4	7.6	6.7
40.0									8.0	7.4	6.4
42.0									7.3	7.0	5.9
44.0									4.1	6.4	5.4
46.0										5.8	5.0
48.0											4.6
50.0											4.2
52.0											2.9

THIS CHART IS ONLY A GUIDE AND SHOULD NOT BE USED TO OPERATE THE CRANE.

The individual crane's load chart, operating instructions and other instructional plates must be read and understood prior to operating the crane

WORKING RANGE

Main Boom - Imperial 75%



THIS CHART IS ONLY A GUIDE AND SHOULD NOT BE USED TO OPERATE THE CRANE.

The individual crane's load chart, operating instructions and other instructional plates must be read and understood prior to operating the crane

LOAD CHART

Main Boom - Imperial 75%



185 ft



124,782 lb



100%



360°



0.3°



Pounds

Feet	43.0	55.8- 57.0	66.6- 72.1	80.3- 85.2	91.1- 100.3	111.8- 115.7	125.9- 128.9	139.7- 144.6	155.7- 156.7	163.9- 170.2	177.0- 184.3
8	440.9*										
10	351.1	335.4	287.7	230.7							
15	293.1	286.3	247.8	218.4	190.1						
20	236.6	239.3	216.6	195.7	171.5	150.5	109.7				
25	198.4	195.3	188.4	175.1	150.4	144.5	95.0	83.2			
30	162.8	164.4	162.5	155.7	141.2	133.3	83.2	75.5	67.4	57.4	
35		136.4	136.9	134.9	131.5	123.6	75.7	68.5	61.7	54.0	46.7
40		111.4	112.2	111.6	110.6	110.9	69.9	62.8	56.8	50.7	44.2
45		93.1	94.0	94.8	95.3	93.6	64.8	57.7	52.5	47.3	41.8
50			80.2	82.4	81.5	79.5	60.5	53.5	48.7	44.0	39.4
55			70.1	71.6	70.6	69.0	56.7	50.0	45.3	40.9	37.1
60			61.1	63.0	62.0	60.3	53.3	46.8	42.2	38.0	34.9
65				56.1	55.1	53.4	50.3	43.9	39.5	35.3	32.7
70				50.3	49.3	47.5	47.6	41.3	37.1	32.9	30.6
75				44.6	44.4	42.6	44.3	38.9	34.9	30.6	28.7
80					40.3	39.9	40.1	36.6	32.9	28.6	27.5
85					36.7	38.0	36.5	34.7	31.0	26.7	25.9
90						34.9	33.3	32.9	29.5	24.9	23.7
95						32.1	30.5	30.6	28.0	23.3	22.2
100						28.0	28.0	28.1	26.8	22.1	20.8
105							25.8	26.0	25.5	21.0	19.6
110							24.5	24.4	24.2	20.0	18.4
115								22.6	22.4	19.0	17.3
120								21.0	20.8	18.2	16.2
125								19.5	19.3	17.3	15.2
130									18.0	16.5	14.3
135									16.8	15.8	13.4
140									13.8	15.0	12.6
145										14.1	11.8
150										13.0	11.1
155											10.4
160											9.7
165											8.8
170											6.6

THIS CHART IS ONLY A GUIDE AND SHOULD NOT BE USED TO OPERATE THE CRANE.

The individual crane's load chart, operating instructions and other instructional plates must be read and understood prior to operating the crane

SPECIFICATIONS

Upper Carriage



Boom

43.0 – 185.0 ft (13,1 – 56,4 m) six-section boom
Maximum tip height: 190.3 ft (58.0 m).



Boom Extension

34.8 – 53.1 – 71.5 ft (10,6 – 16,2 – 21,8 m) offsettable swingaway extension.
Extension can be offset at 0°, 20° and 37°. Maximum tip height: 265.7 ft (81,0 m).



Heavy Duty Jib Extension

16.4 ft (5,0 m) heavy duty jib extension that is offset at 0°, 20° and 37°.
Stowable on left side of boom.



Boom Nose

Five nylatron sheaves on heavy-duty roller bearings with removable rope guards. Quick reeve type boom nose.
Equipped with removable auxiliary boom nose.



Boom Elevation

One double-acting hydraulic cylinder with integral holding valves. Elevation: -3.0° to 80°.



Counterweight

Upper: 124,782 lb (56,600 kg) total (7 pieces)
Carbody: 33,069 lb (15,000 kg) total (2 pieces)



Rated Capacity Limiter and Anti-Two Block System

Graphical display of load moment and anti-two block system with audio-visual warning and control lever lockout. These systems provide electronic display of crane configuration, boom angle, length, radius, tip height, maximum permissible load, momentary load and warning of impending two-block condition. Includes advanced diagnostics system that increases the performance of the machine, simplifies and accelerates troubleshooting, and lowers operating costs. Equipped with event recorder.

Cab



Large-capacity operator's compartment that includes an air suspended operator's seat with lumbar support, heated seat, headrest, 3" safety belt, ergonomic control panels, load sensing electric dual axis joystick controls, travel pedals and levers, exceptional sound insulation, sliding door (includes sliding window), excellent all around visibility, tinted safety glass, front tiltable window, large skylight w/ sun protection, windshield and roof wiper/washer system, Bluetooth/AM/FM/USB/MP3 radio, climate control (A/C, heat, and defrost), fire extinguisher, and 20° tilt capability for improved overhead vision and ergonomic posture. Also equipped with a 7" monitor in cab for rear view, right side and hoist cameras.



Hydraulic System

Load sensing / LUDV hydraulic system with hydraulic and pilot controlled work functions, and load limit sensing control. Single variable-displacement piston pump with a three-section gear pump.

Maximum output: 132 gpm (500 lpm)

Maximum operating pressure: 4786 psi (330 bar)

238 gal (900 L) steel hydraulic reservoir with sight level gauge.

High performance, 3 micron filtration system with water absorption contamination indicator for higher oil purity and extended oil service life.

* Denotes optional equipment

SPECIFICATIONS



Swing

Two-speed, compact planetary gear with axial piston hydraulic motor and integrated brake valves. Sealed, externally geared slewing ring that allows for 360° of continuous rotation. Electronically applied service brake operated via foot pedal. Spring applied, hydraulically released parking brake. Two position, hydraulically pinned house lock. Swing speed: 0-1.6 rpm, variable.



Hoist (main and optional auxiliary hoist)

Two-speed hoists driven via an axial piston hydraulic motor with compact planetary gear. Spring-loaded disc brake. Grooved drum with drum rotation indicator for both hoists that is located in the joystick controls.

Maximum hoist pull (first layer): 40,488 lb (18 365 kg)

Maximum permissible single line pull: 29,765 lb (13 500 kg)

Maximum single line speed: 377 ft/min (115 m/min)

Rope construction: 35 X 7 Rotation Resistant

Rope diameter: 26 mm

Rope length: 853 ft (260 m)



Engine (Stage V)

Cummins B 6.7 L diesel, six cylinders, turbocharged with Cummins Diesel Oxidation (DOC) Catalyst and Selective Catalytic Reduction (SCR).

Meets USEPA Tier 4 final requirements.

260 bhp (194kW) at 2200 rpm.

Fuel requirements: Maximum of 15 ppm Sulphur content (ultra-low diesel fuel). DEF (diesel exhaust fluid) required for SCR (selective catalytic reduction).



Engine (Tier 3)

Cummins B 6.7 L diesel, six cylinders, turbocharged rated at 260 bhp (194kW) at 2200 rpm.



Fuel tank capacity

Diesel Fuel: 120 gal (450 L)

DEF (Diesel Exhaust Fluid): 12 gal (45 L)



Electrical system

24 volt with two 12-volt, maintenance-free batteries.

Includes battery disconnect switch.



Lights

Lighting package includes two halogen lights integrated into the front side of the cab roof and one LED headlight on the upper carriage, right side.



Cameras

Back-up, right-side and hoist cameras.

THIS CHART IS ONLY A GUIDE AND SHOULD NOT BE USED TO OPERATE THE CRANE.

The individual crane's load chart, operating instructions and other instructional plates must be read and understood prior to operating the crane

SPECIFICATIONS

Lower Carriage



Frame

Durable all steel welded construction with extendable side frame beams and hydraulic jacks for side frame installation and removal. Frame mounted hydraulic jacks also used for track extension and retraction.

Side Frames

Four steel side frame beams that can be hydraulically extended or retracted via controls in the cab. 39 in (1000 mm) double bar maintenance-free track shoes.



Retracted gauge: 11.5 ft (3,5 m)

Intermediate gauge: 15.6 ft (4,75 m)

Extended gauge: 19.7 ft (6,0 m)

*Note: These widths are from centerline to centerline of crawlers.



Travel

Two-speed hydrostatic drive operated via lever/pedal controls in cab. Allows for excellent maneuverability with skid steering and counter-rotation. Both side frames are hydraulically driven through a two-stage hydraulic traction motor. Spring-loaded, hydraulically release multi-disk brake.

Travel Speed: Max Low Range – 0.28 mph (0,45 kmh)

Max High Range – 1.30 mph (2,10 kmh)

Gradeability (theoretical): 60%

Operating Weight

375,590 lb (170,200 kg) base machine configuration that includes 185.0 ft (56,4 m) boom, 110 USt (100 t) hook block, 39 in (1000 mm) double bar crawlers, main and auxiliary hoist, 124,782 lb (56,600 kg) upper counterweight and carbody weight: 33,069 lb (15 000 kg).

Ground bearing pressure (no load): 16.1 psi (1,13 kg/cm²)

Miscellaneous standard equipment

- Central, easily accessible lubricating strip.
- Grated platform in front of cab, and foldable grated platforms on side of cab and both sides of the upper carriage. Foldable handrails included for upper carriage.
- Service friendly engine and hydraulic compartment with decoupled engine suspension, sound proofing and lighting.
- 110 USt (100 t) 3-sheave quick reeve hook block.
- External RCL light bar.
- Storage box attached to carbody counterweight.

*Optional equipment

- Basket: Yoke style, 72 in x 36 in (1829 mm x 914 mm) steel basket, gravity hung with cylinder brake lock (does not side stow). Includes quick-attach boom attachment. Basket capacities: 1200 lb (544,3 kg) main boom and 500 lb (226,7 kg) on boom extension.
- Radio remote control package.
- Cold weather packages up to 40° F / -40° C.
- Maintenance-free flat track shoes.
- Polyurethane clamp-on track pads.
- Two additional LED lights mounted on base boom
- Wind speed indicator (hardwired) displayed thru RCL.
- Work area definition system.
- Swing barrier protection. Provides a swing perimeter when used with caution tape.
- Pinion lubrication for slewing gear with lubrication pump, operated from cab, with special lubricant.

* Denotes optional equipment

NOTES

NOTES

The Manitowoc Company, Inc.

Regional headquarters

Americas

Milwaukee, Wisconsin, USA
Tel: +1 414 760 4600

Shady Grove, Pennsylvania, USA
Tel: +1 717 597 8121

Europe and Africa

Dardilly, France – TOWERS
Tel: +33 (0) 4 72 18 20 20

Wilhelmshaven, Germany – MOBILE
Tel: +49 (0) 4421 294 0

APAC

Shanghai, China
Tel: +86 21 6457 0066

Singapore
Tel: +65 6264 1188

Middle East and India

Dubai, UAE
Tel: +971 4 8862677

© 2025 The Manitowoc Company, Inc.
Form No. GHC220PG
Part No. -- / .025M/0825

This document is non-contractual. Constant improvement and engineering progress make it necessary that we reserve the right to make specification, equipment, and price changes without notice. Illustrations shown may include optional equipment and accessories and may not include all standard equipment.



manitowoc.com