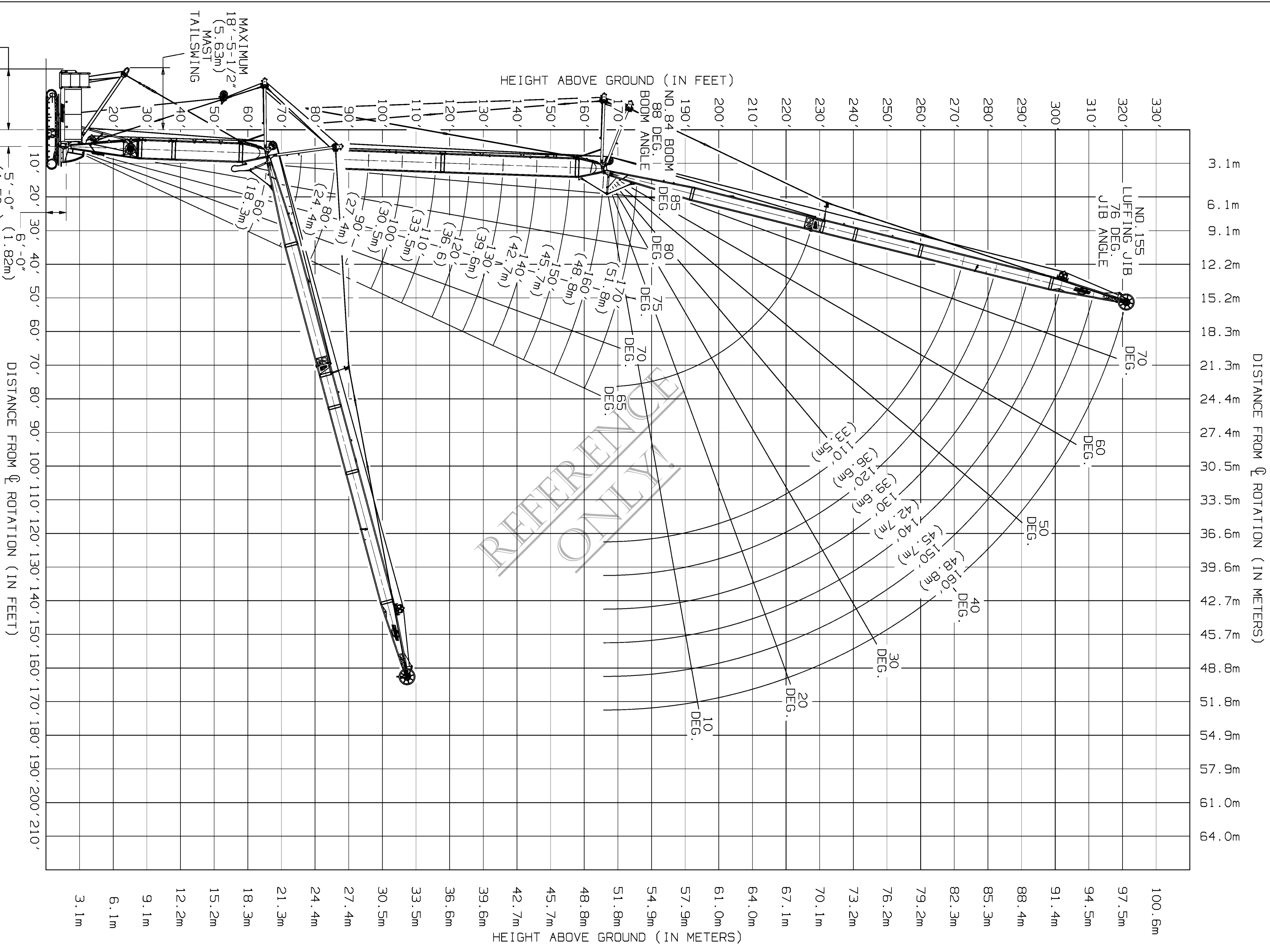


REFERENCE ONLY

DATE	SCALE	Manitowoc Cranes, Inc. Manitowoc, Wisconsin Model 555 SERIES 2 Part JAS	DIAGRAM - RANGE ASSEMBLY - NO. 84 BOOM W/ #155 LUFFING JIB	REVISION
09-12-03	5/8"=1'			
DRAWING NO.	REV			
A09157	1			
SHT. 1 OF 4				



REFERENCE ONLY

18'-0 1/2"
(5.50m)
TAILSWING

MAXIMUM
18'-5-1/2"
(5.63m)
MAST
TAILSWING

DISTANCE FROM Q ROTATION (IN FEET)

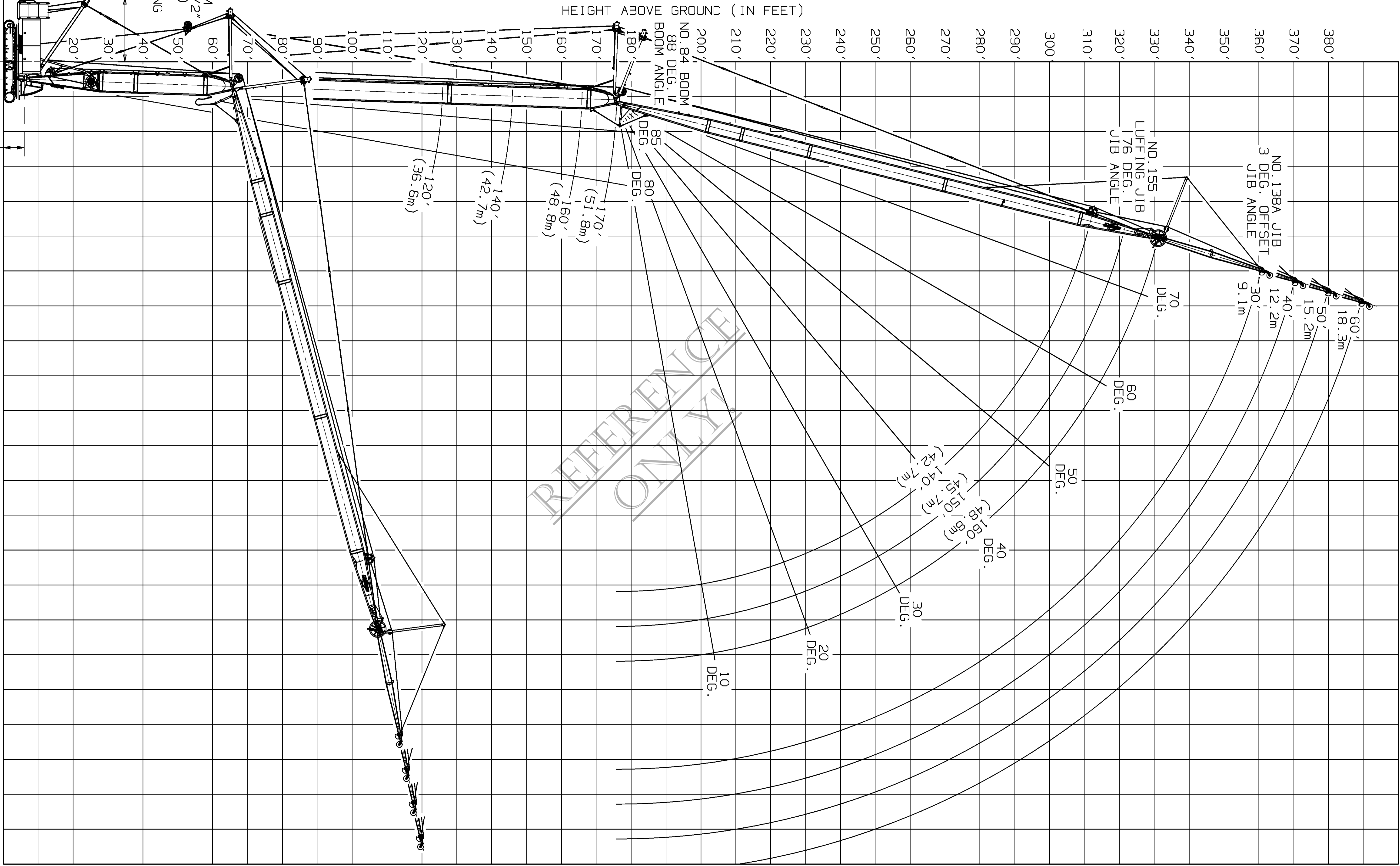
HEIGHT ABOVE GROUND (IN METERS)

DISTANCE FROM Q ROTATION (IN METERS)

DATE	09-12-03	SCALE	5/8"=1'	MANUFACTURER	Manitowoc Cranes, Inc.	DIAGRAM - RANGE ASSEMBLY -	REVISION
DRAWING NO.	A09157	REV	NVS	MODEL	Manitowoc, Wisconsin	NO. 84 BOOM W/155 LUFFING JIB	
APP'D	JAS	REV	TWB	SERIES	Series 2	& INTERMEDIATE FALL	
SHT. 2 OF 4							

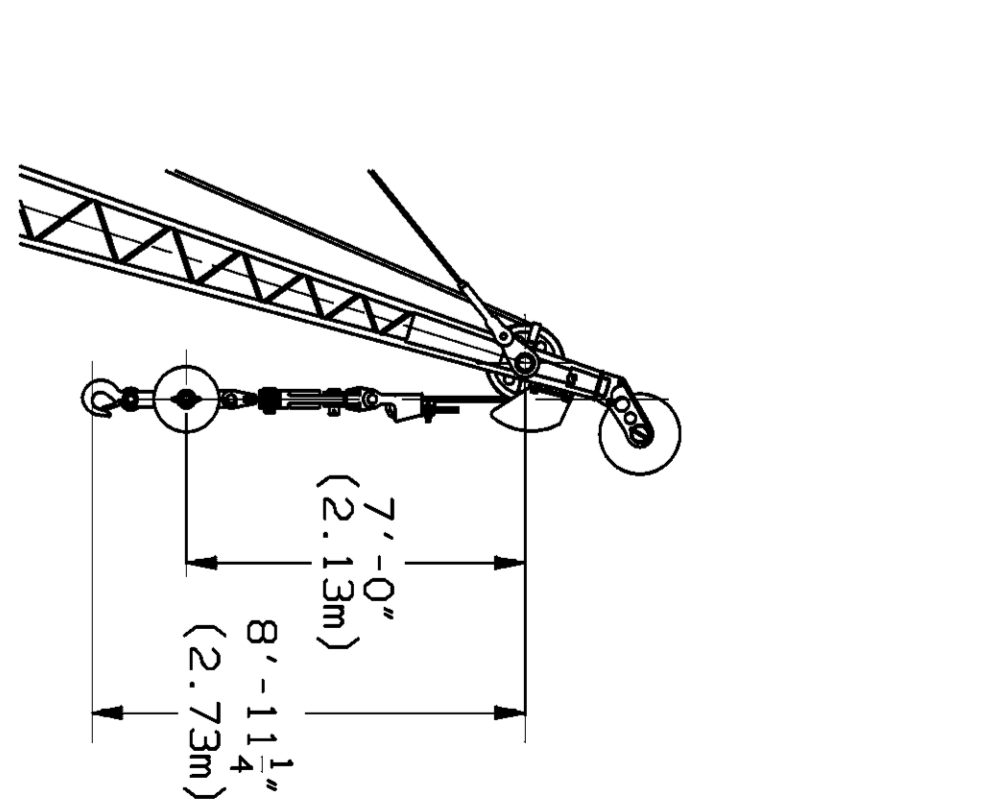
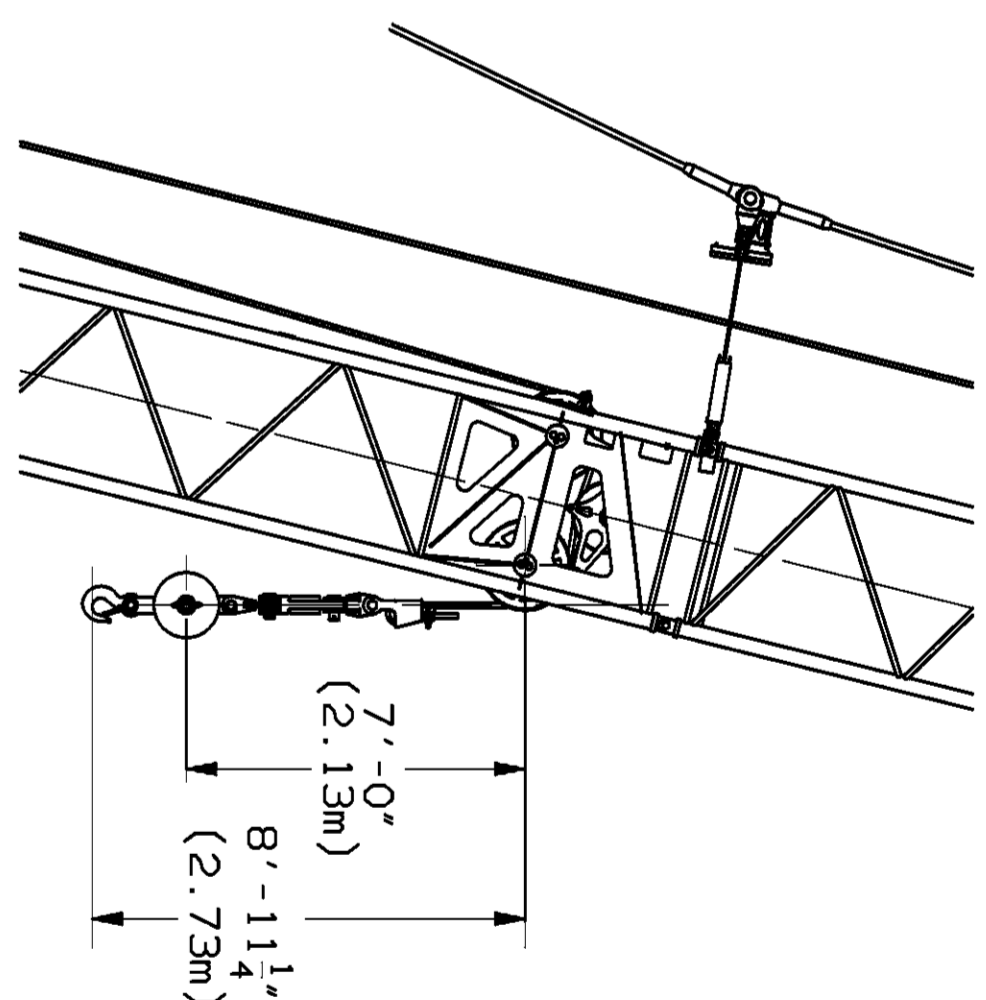
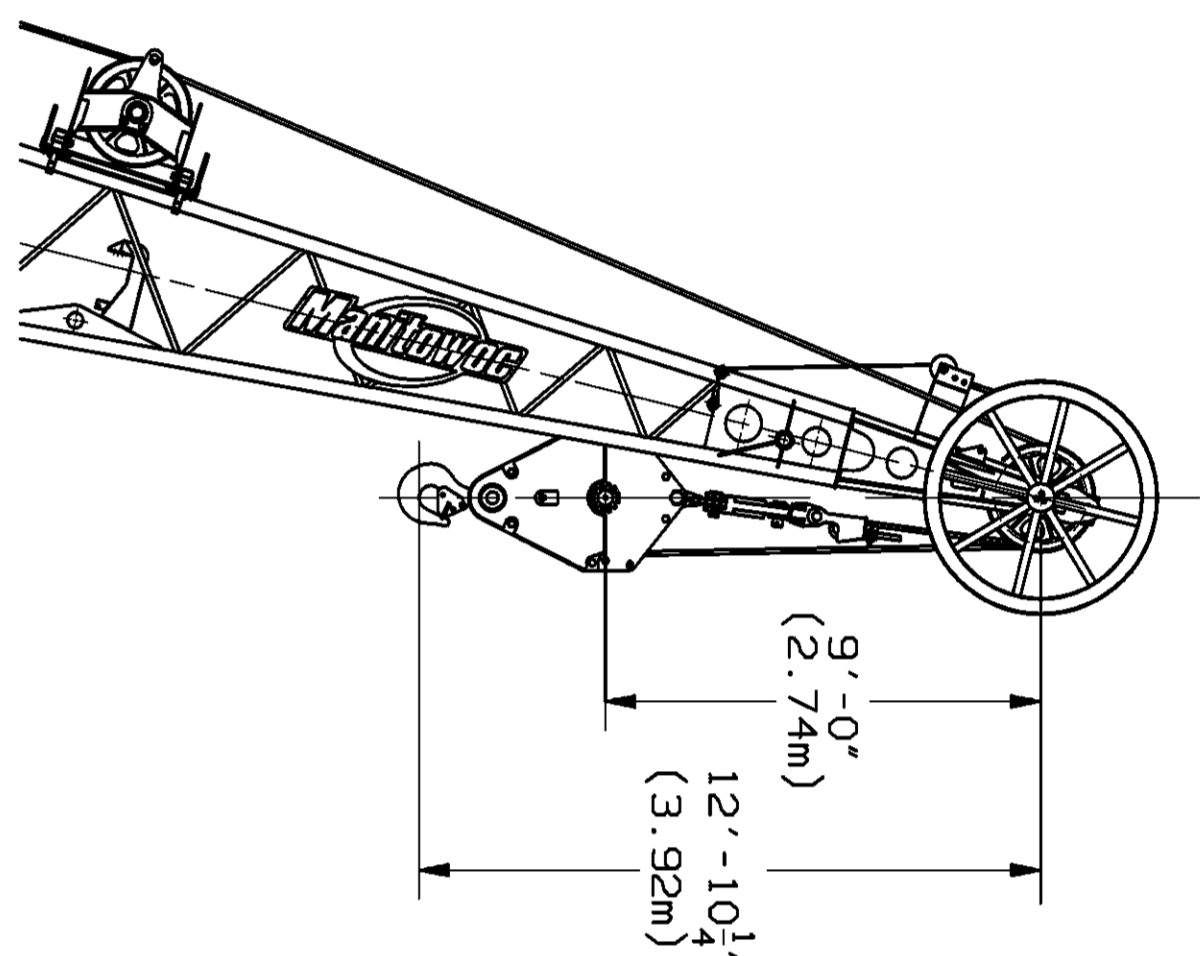
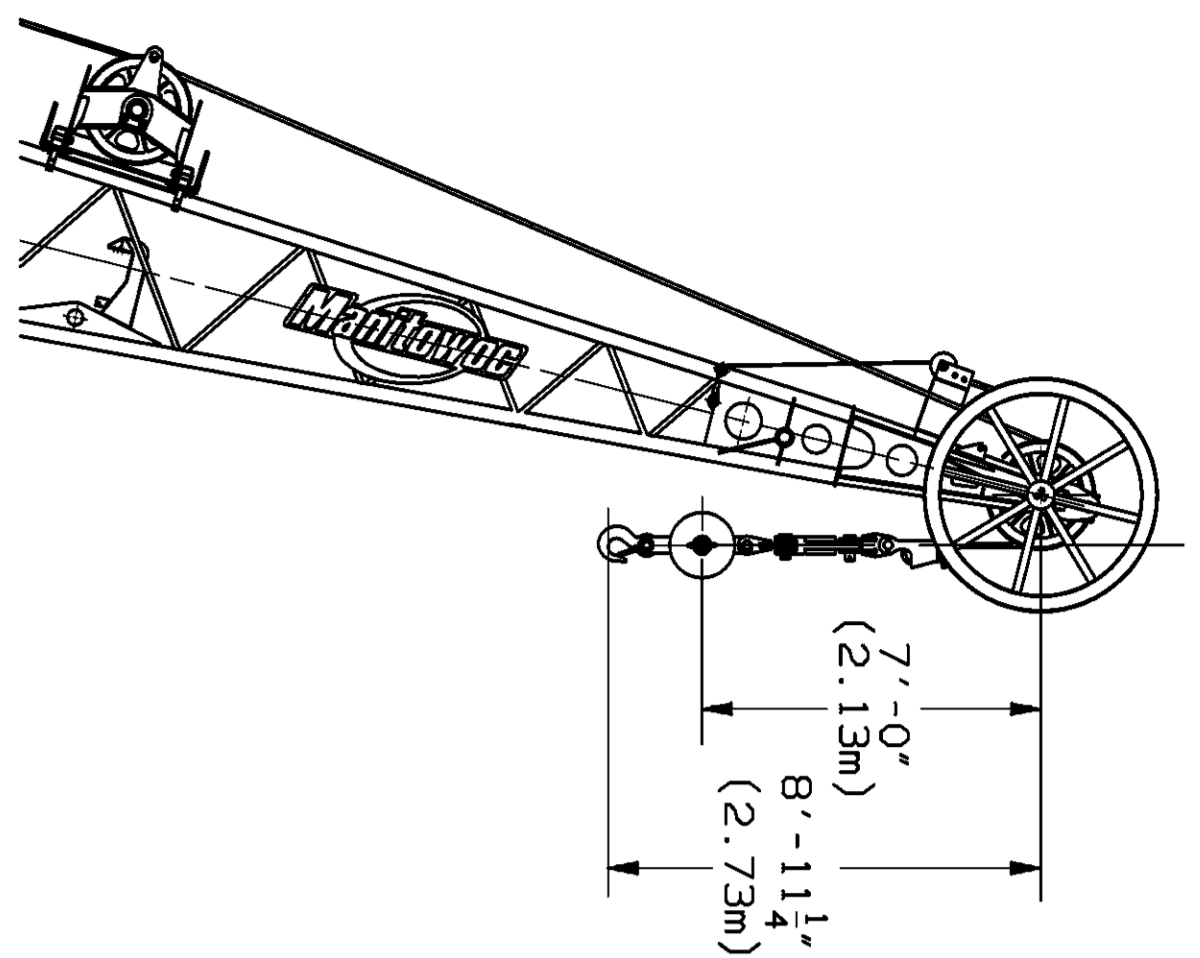
DISTANCE FROM \varnothing ROTATION (IN METERS)

6.1m 12.2m 18.3m 24.4m 30.5m 36.6m 42.7m 48.8m 54.9m 61.0m 67.1m



REFERENCE ONLY

DATE	SCALE	MANUFACTURER	DIAGRAM	REVISION
09-12-03	5/8"=1'	Manitowoc Cranes, Inc.	RANGE ASSEMBLY -	
DRAWING NO.	REV'S	Location, Wisconsin	NO. 84 BOOM W/155 LUFFING JIB	
A09157	1	Model 555 SERIES 2	& NO. 138A JIB	
APP'G	JAS			



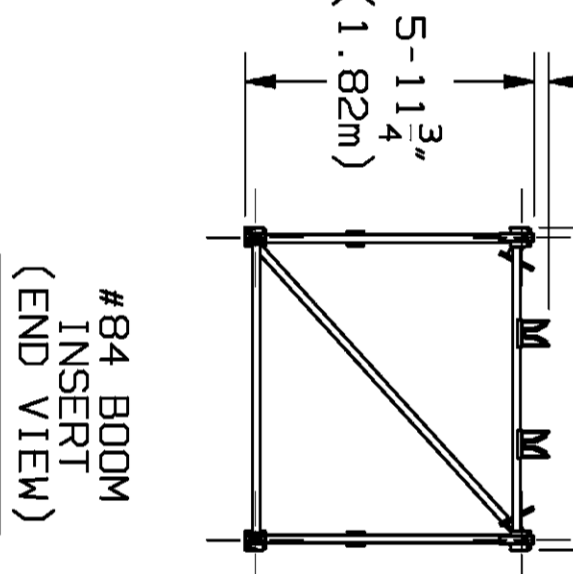
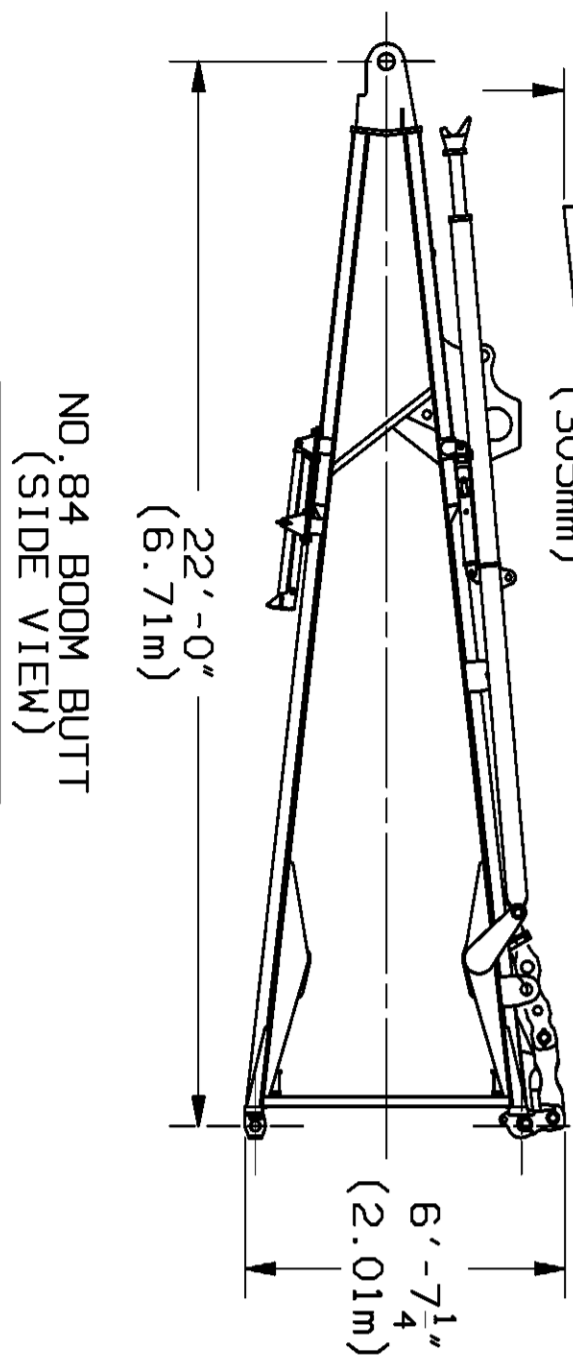
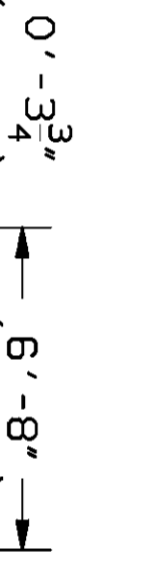
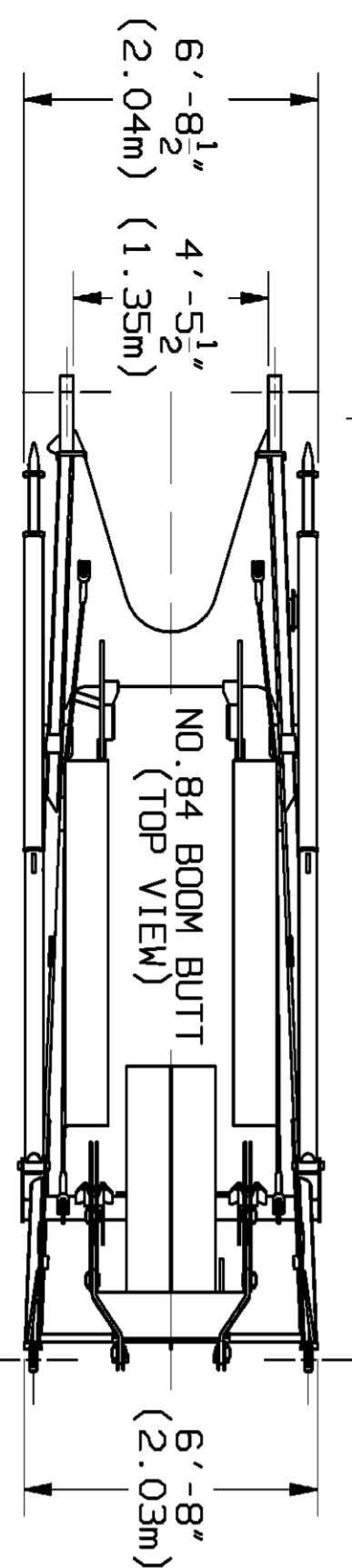
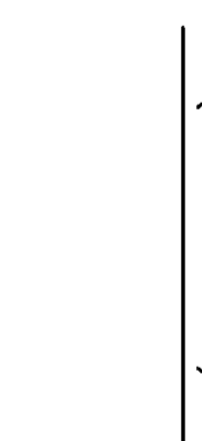
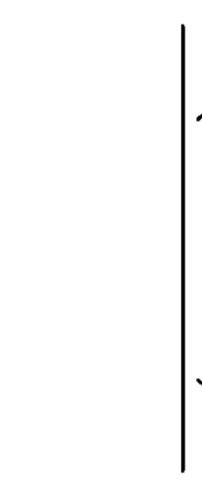
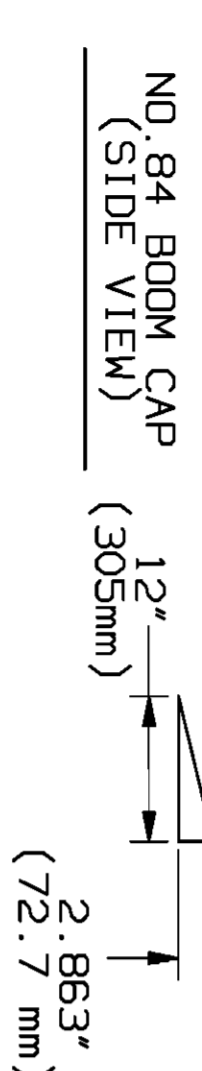
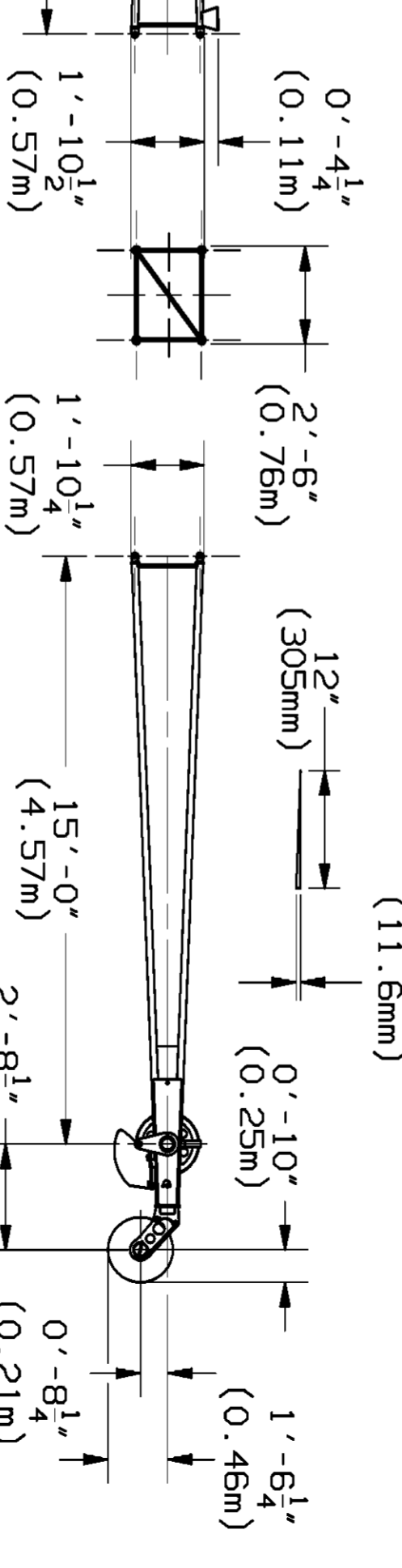
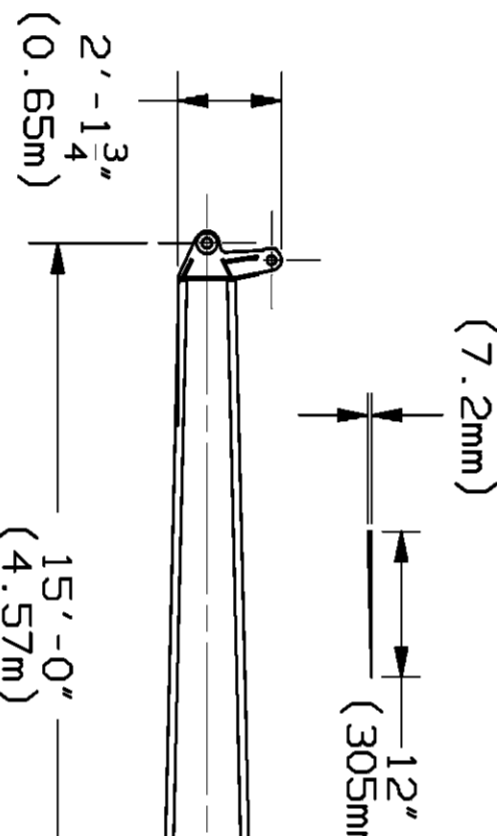
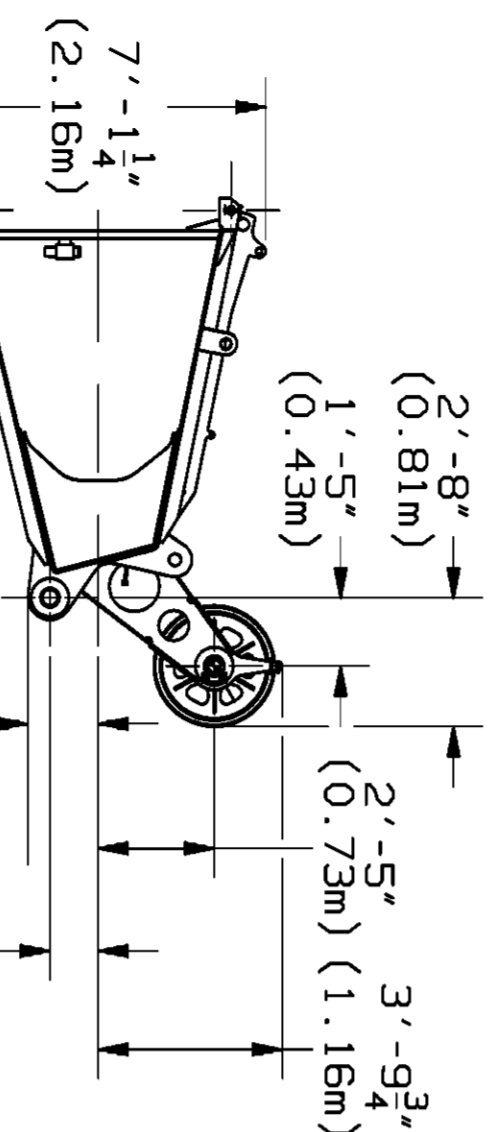
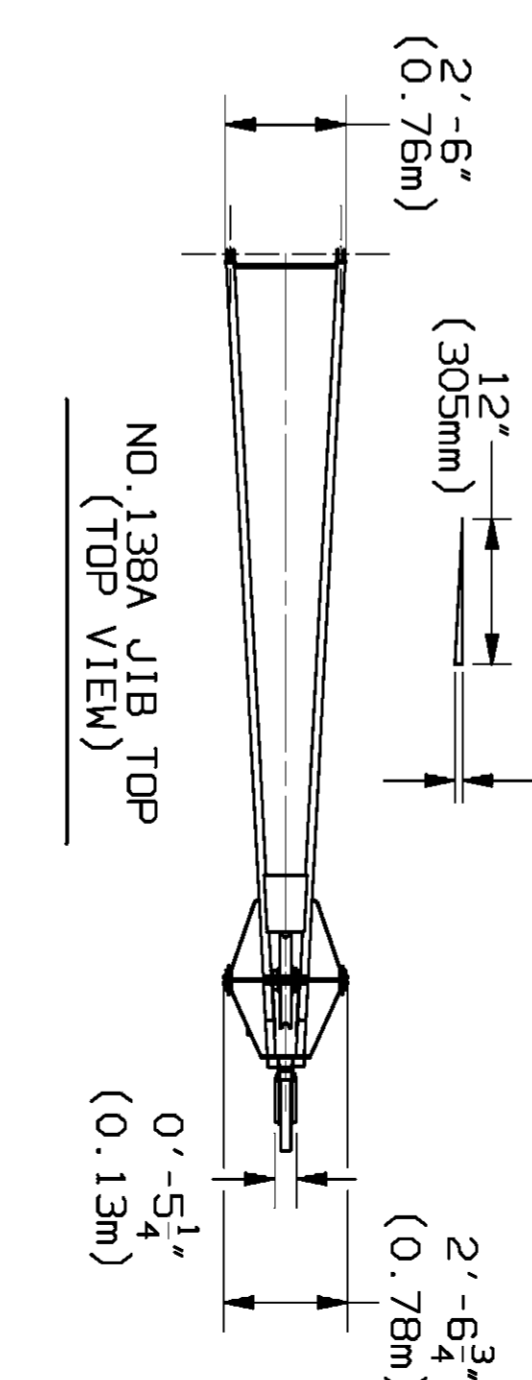
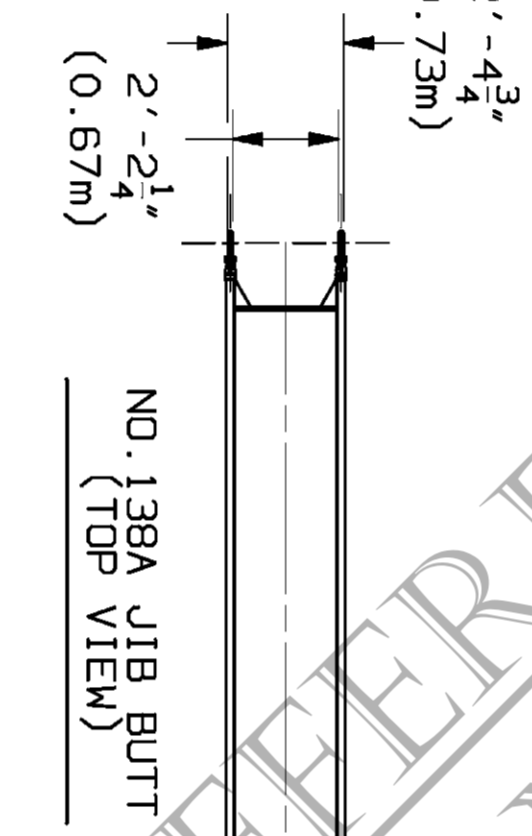
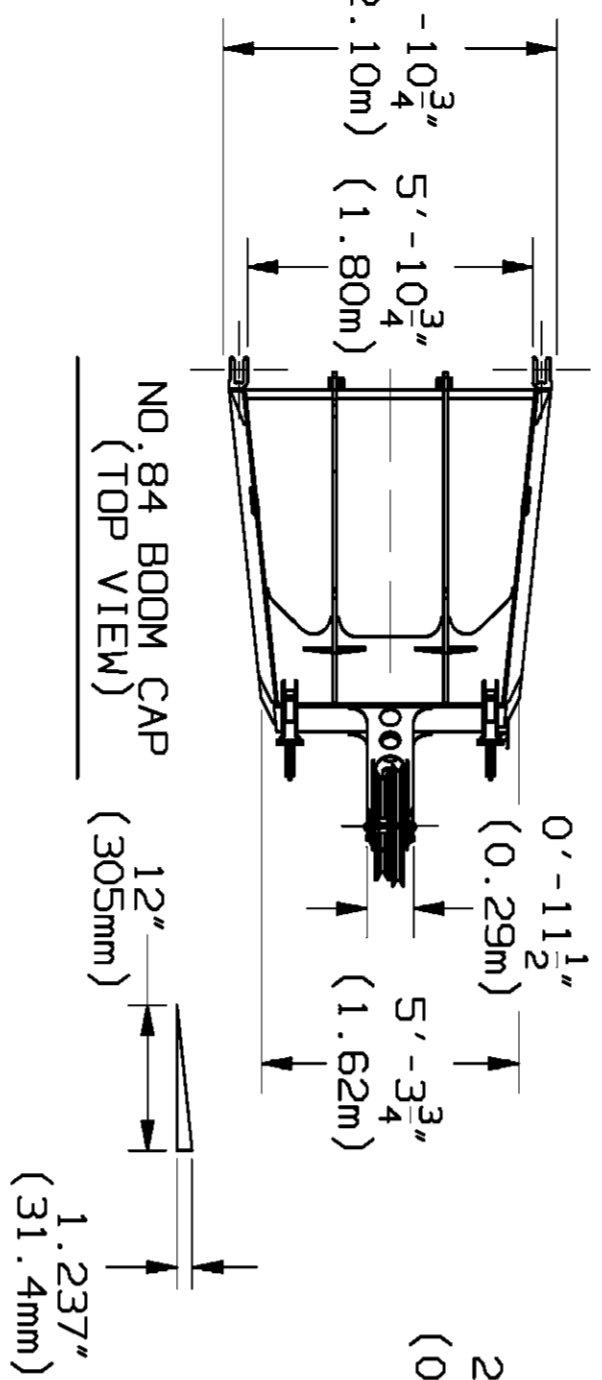
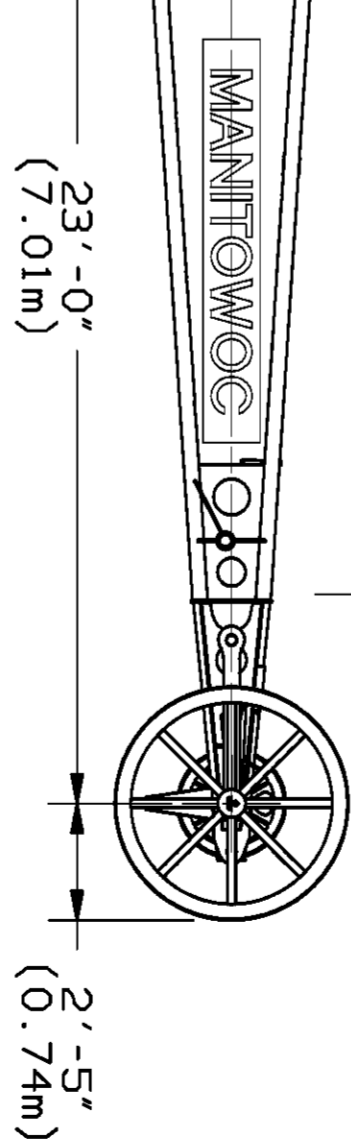
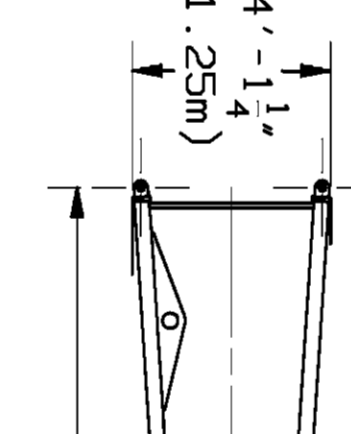
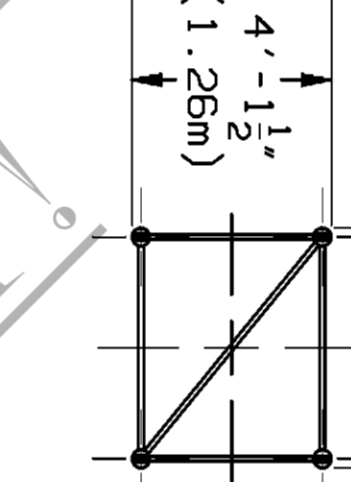
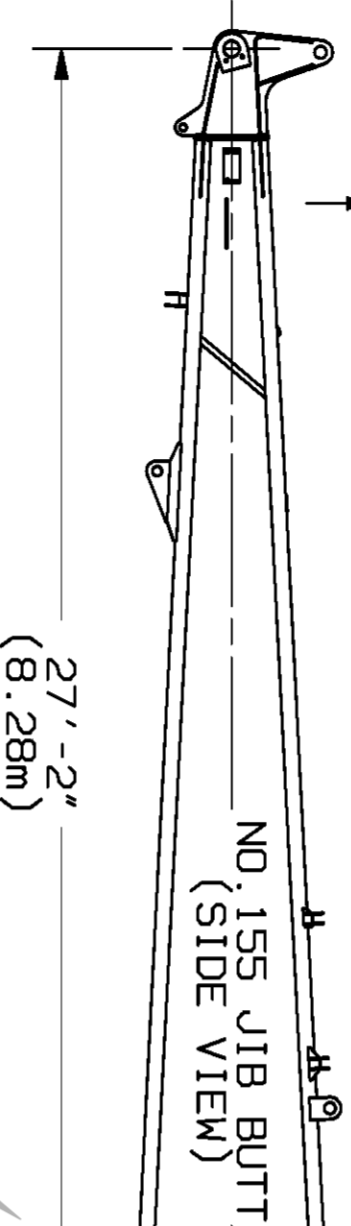
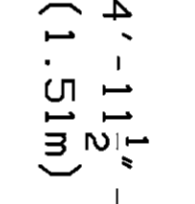
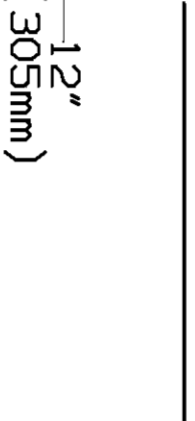
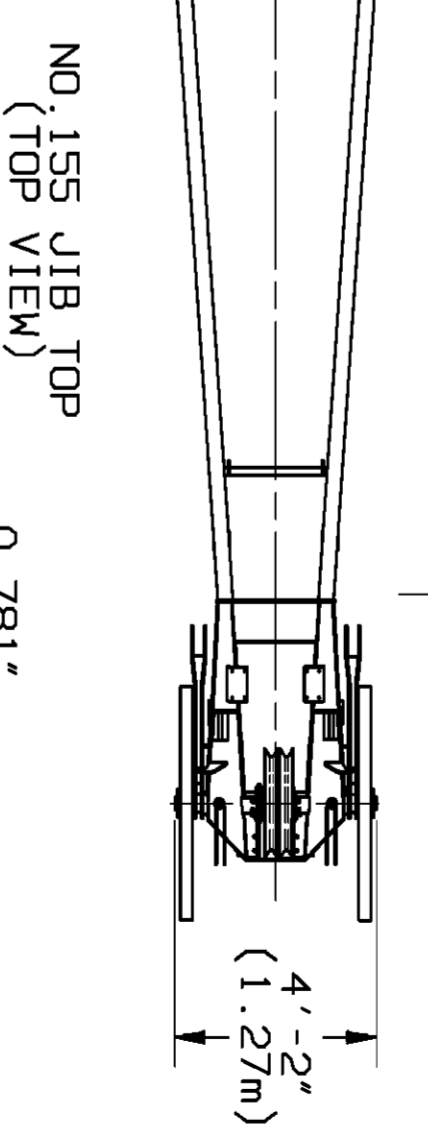
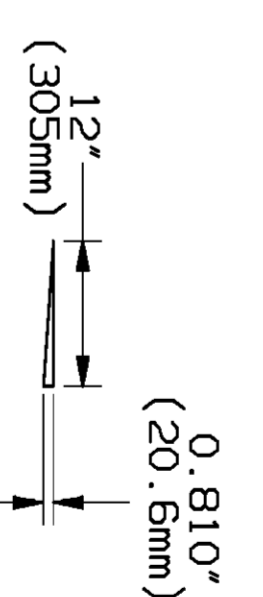
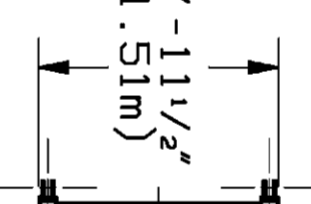
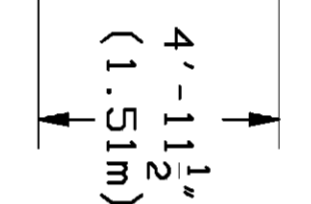
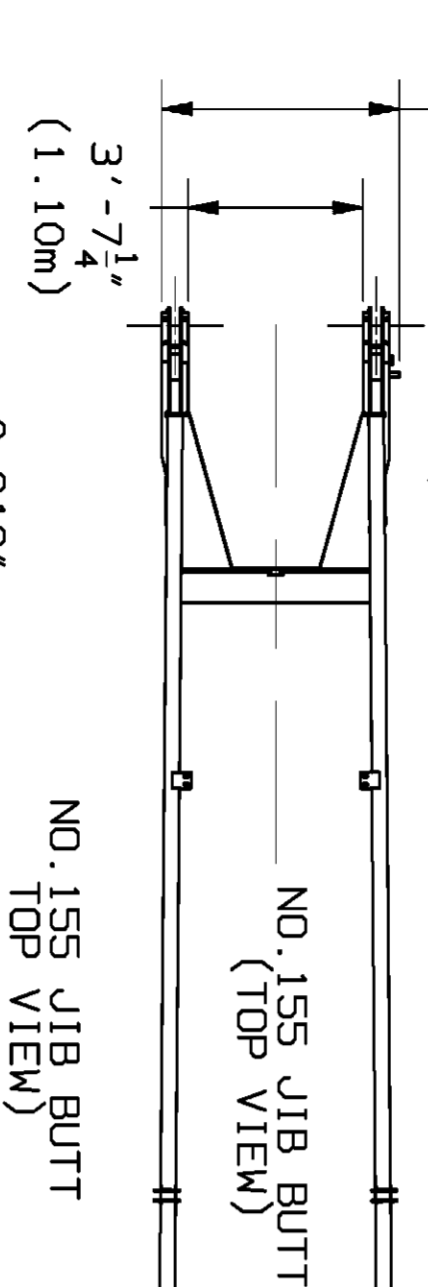
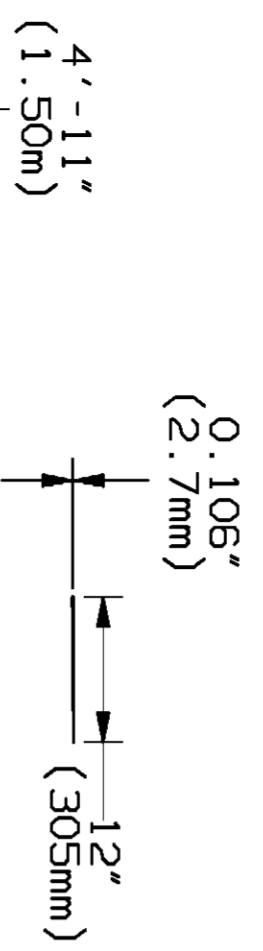
15 US TON (14 METRIC TON)
SWIVEL HOOK & WEIGHT BALL
TO JIB POINT MINIMUM DISTANCE
NO. 155 JIB - SINGLE PART LINE

45 US TON (40.8 METRIC TON)
BLOCK TO JIB POINT
MINIMUM DISTANCE
NO. 155 JIB - 3 PARTS OF LINE

15 US TON (14 METRIC TON)
SWIVEL HOOK & WEIGHT BALL
TO JIB POINT MINIMUM DISTANCE
NO. 138A JIB - SINGLE PART LINE

15 US TON (14 METRIC TON)
SWIVEL HOOK & WEIGHT BALL
TO JIB POINT MINIMUM DISTANCE
NO. 138A JIB - SINGLE PART LINE

MINIMUM DISTANCE MEASUREMENTS FROM MANTOWOC LOAD BLOCK
TO JIB POINT BASED ON NO.155 LUFFING JIB ANGLE AT 76 DEGREES
AND 2 1/2 DEGREE FLEET ANGLE OR PHYSICAL LIMITATIONS.



NOTE 1: THIS DRAWING IS INTENDED ONLY AS A GUIDE TO ASSIST IN JOB PLANNING.

NOTE 2: FOR PLANNING A LIFT, THIS DRAWING IS TO BE USED IN CONJUNCTION WITH APPROPRIATE CAPACITY CHARTS, RANGE CHART, WIRE ROPE SPECIFICATIONS, RIGGING DRAWING, AND OUTLINE DIMENSIONS.

NOTE 3: FOR PLANNING LIFTS WHERE CLEARANCES ARE LIMITED AND ACCURACY IS DESIRED, A DETAILED LAYOUT SHOULD BE PREPARED.

NOTE 4: WHEN EQUIPPED WITH BLOCK-UP LIMIT CONTROL, LOAD BLOCK TO BOOM POINT/JIB POINT MINIMUM DISTANCE MAY BE MORE THAN INDICATED. SEE OPERATOR'S MANUAL FOR "BLOCK-UP LIMIT CONTROL".

NOTE 5: MAXIMUM BOOM ANGLE 88 DEGREES FOR NO. 84 BOOM AND NO. 155 LUFFING JIB. MAXIMUM JIB ANGLE FOR NO. 155 LUFFING JIB IS 76 DEGREES WITH NO. 84 BOOM AT 88 DEGREES.

NOTE 6: CRANE MUST BE EQUIPPED WITH SERIES 2 COUNTERWEIGHTS WHEN NO. 155 LUFFING JIB IS ATTACHED TO NO. 84 BOOM.

DATE	SCALE	MANUFACTURER	REVISION
09-12-03	1/4" = 1'	Mantowoc Cranes, Inc.	
DRAWING NO. A09157	REVNS	Mantowoc, Wisconsin	
REV TUB	REV 555 SERIES 2		
REV JAS			
		DIAGRAM - RANGE ASSEMBLY -	
		NO. 84 BOOM W/155 LUFFING JIB	
		W/INTERMEDIATE FALL & NO. 138A JIB	