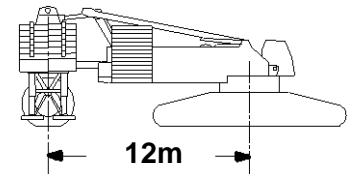


Liftcrane Boom Capacities

Boom No. 55 or No. 55A with 42.7m Mast No. 56
223 170 kg Crane Counterweight
145 150 kg Carbody Counterweight
0 kg thru 390 090 kg Wheeled Counterweight
at 12m Position
360 Degree Rating

Meets
ANSI B30.5
Requirements
Similar to
AS1418.1 and
AS1418.5

18000 With
21000 MAX-ER



LIFTING CAPACITIES: Lifting capacities for various boom lengths and operating radii are for freely suspended loads and may be based on percent of tipping, strength of structural components, some operating speeds and other factors. Capacities based on structural competence are denoted by an asterisk (*).

Note 1: Capacities above 600 000 kg thru 700 000 kg require 55A boom top.

Note 2: Capacities above 700 000 kg require special equipment. Capacities above 600 000 kg thru 700 000 kg require 55A boom top.

Wheeled counterweight must be attached to shear frame and MAX-ER mode must be selected to operate. Swing and travel (forward or side crawl) requires proper position of counterweight wheels when contacting ground. Refer to operators manual for wheel positioning. Exit MAX-ER mode before operating without wheeled counterweight.

Simultaneous hoisting of both load drums is required for even block travel.

Weight of all load blocks, hooks, weight ball, slings, hoist lines, etc., beneath boom point sheaves, is considered part of main boom load. Boom is not to be lowered beyond radii where combined weights are greater than rated capacity. Where no capacity is shown, operation is not intended or approved.

OPERATING CONDITIONS: Machine to operate in a level position with recommended out of levelness of 0.75 percent or less and in no case shall exceed 1 percent on a firm uniformly supporting surface with mast up. Refer to boom rigging **No. A05377**, Wire Rope Specification chart

No. 8573-A or 8573-B and Counterweight Arrangement chart **No. 8577-A**. Crane operator judgment must be used to allow for dynamic load effects of swinging, hoisting or lowering, travel, wind conditions, as well as adverse operating conditions and physical machine depreciation. Refer to operators manual for operating guidelines.

MACHINE TRAVEL: Machine to travel on a firm, level and uniformly supporting surface and boom within boom angle range shown in capacity chart. Refer to Swing and Travel Specification chart **No. 8575-A**. Maximum available travel speed is 0.7 MPH (0.3 m/s). Travel with load (pick and carry) is not restricted with available travel speed.

OPERATING RADIUS: Operating radius is horizontal distance from axis of rotation to center of vertical hoist line or load block. Boom angle is angle between horizontal and centerline of boom butt and inserts, and is an indication of operating radius. In all cases, operating radius shall govern capacity.

BOOM POINT ELEVATION: Boom point elevation is vertical distance from ground level to centerline of boom point shaft.

MACHINE EQUIPMENT: Machine equipped with MAX-ER, 11 811 mm crawlers, 1 524 mm treads, 9.1m live mast, 42.7m mast, 16 part boom hoist reeving, boom support straps, 223 170 kg crane counterweight, 145 150 kg carbody counterweight and wheeled counterweight as specified.

WARNING: Check amount of wheeled counterweight on machine before use of this chart. Refer to Counterweight Assembly.

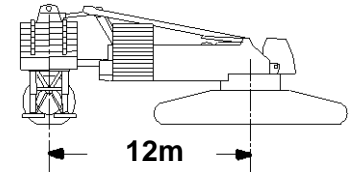


Liftcrane Boom Capacities

Boom No. 55 or No. 55A with 42.7m Mast No. 56
223 170 kg Crane Counterweight
145 150 kg Carbody Counterweight
0 kg thru 390 090 kg Wheeled Counterweight
at 12m Position
360 Degree Rating

Meets
ANSI B30.5
Requirements
Similar to
AS1418.1 and
AS1418.5

18000 With
21000 MAX-ER



Maximum Boom Lengths Lifted Unassisted	
Over End of Blocked Crawlers	Over End or Side of Unblocked Crawlers
With 0 kg Wheeled Counterweight	
97.5m	91.4m
Over End or Side of Unblocked Crawlers	
With 110 680 kg Wheeled Counterweight	With 210 470 kg Wheeled Counterweight
109.7m	128.0m
With 270 340 kg - 390 090 kg Wheeled Counterweight	
134.1m	
Load block, hook and weight ball on ground at start.	

Upper Boom Point Capacity For Liftcrane Service - Whip Line		
28 mm		32 mm
Drum 2	Drum 3	Drum 2
Single Part Line		
16 240 kg	13 610 kg	22 140 kg
Two Part Line		
Upper Boom Point No. 170419		
27 220 kg	27 220 kg	27 220 kg
Upper Boom Point No. A08516		
32 480 kg	27 220 kg	44 270 kg
In all cases, upper boom point capacities cannot exceed those listed for main boom capacity.		

42.7m (140 Ft.) Boom

Oper. Rad. m	Boom Ang. Deg.	Boom Point Elev. m	0 kg Wheeled Counterweight Boom Capacity Kilograms	110 680 kg Wheeled Counterweight Boom Capacity Kilograms	210 470 kg Wheeled Counterweight Boom Capacity Kilograms	270 340 kg Wheeled Counterweight Boom Capacity Kilograms	350 170 kg Wheeled Counterweight Boom Capacity Kilograms	390 090 kg Wheeled Counterweight Boom Capacity Kilograms	Oper. Rad. m
8.5	82.6	45.6	485 300*	593 600*	687 600* ¹	700 000* ¹	750 000* ²	750 000* ²	8.5
9.0	81.9	45.5	461 000*	564 100*	653 600* ¹	696 900* ¹	750 000* ²	750 000* ²	9.0
10.0	80.6	45.3	414 700*	508 100*	589 100*	637 700* ¹	687 900* ¹	729 800* ²	10.0
11.0	79.2	45.1	376 800*	462 100*	536 200*	580 700*	639 900* ¹	669 800* ¹	11.0
12.0	77.8	44.8	344 900*	423 400*	491 600*	532 600*	587 100*	614 400* ¹	12.0
14.0	75.0	44.3	292 300*	361 800*	420 600*	456 000*	503 100*	526 700*	14.0
16.0	72.2	43.6	250 500*	315 000*	366 800*	397 900*	439 300*	460 000*	16.0
18.0	69.3	42.8	218 600*	278 300*	324 500*	352 300*	389 300*	407 800*	18.0
20.0	66.4	42.0	193 200*	248 700*	290 400*	315 500*	349 000*	365 700*	20.0
22.0	63.3	40.9	172 500*	224 100*	262 300*	285 200*	315 700*	330 900*	22.0
24.0	60.2	39.8	155 400*	202 600*	238 800*	259 800*	287 800*	299 300*	24.0
26.0	57.0	38.5	140 100	184 400*	218 800*	238 200*	264 000*	269 600*	26.0
28.0	53.7	37.0	125 800	168 900*	201 500*	219 600*	239 900*	244 500*	28.0
30.0	50.2	35.3	113 700	155 400*	186 500*	203 400*	218 400*	222 700*	30.0
32.0	46.5	33.4	103 400	143 700*	173 300*	189 200*	199 600*	203 600*	32.0
34.0	42.5	31.2	94 500	133 400*	161 600*	175 800*	182 900*	186 600*	34.0
36.0	38.2	28.6	86 700	124 200*	151 100*	161 000*	167 900*	171 300*	36.0
38.0	33.3	25.6	79 700	116 000*	141 600*	147 700*	154 100*	157 300*	38.0
40.0	27.7	22.0	73 600	108 500*	130 900*	135 300*	141 200*	144 200*	40.0
42.0	20.6	17.0	68 000	101 700*	118 900*	123 000*	128 600*	131 400*	42.0

Note 1: Capacities above 600 000 kg thru 700 000 kg require 55A boom top.

Note 2: Capacities above 700 000 kg require special equipment. Capacities above 600 000 kg thru 700 000 kg require 55A boom top.

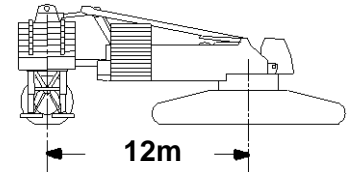


Liftcrane Boom Capacities

Boom No. 55 or No. 55A with 42.7m Mast No. 56
 223 170 kg Crane Counterweight
 145 150 kg Carbody Counterweight
 0 kg thru 390 090 kg Wheeled Counterweight
 at 12m Position
 360 Degree Rating

Meets
ANSI B30.5
Requirements
Similar to
AS1418.1 and
AS1418.5

18000 With 21000 MAX-ER



48.8m (160 Ft.) Boom

Oper. Rad. m	Boom Ang. Deg.	Boom Point Elev. m	0 kg Wheeled Counterweight Boom Capacity Kilograms	110 680 kg Wheeled Counterweight Boom Capacity Kilograms	210 470 kg Wheeled Counterweight Boom Capacity Kilograms	270 340 kg Wheeled Counterweight Boom Capacity Kilograms	350 170 kg Wheeled Counterweight Boom Capacity Kilograms	390 090 kg Wheeled Counterweight Boom Capacity Kilograms	Oper. Rad. m
9.1	82.8	51.7	451 600*	553 100*	641 200* ¹	694 100* ¹	700 000* ¹	700 000* ¹	9.1
10.0	81.7	51.5	413 000*	506 300*	587 300*	636 000* ¹	690 600* ¹	700 000* ¹	10.0
11.0	80.6	51.3	375 100*	460 400*	534 500*	578 900*	638 200* ¹	668 000* ¹	11.0
12.0	79.4	51.1	343 100*	421 700*	489 900*	530 800*	585 400*	612 700* ¹	12.0
14.0	76.9	50.6	290 900*	360 100*	419 000*	454 300*	501 500*	525 000*	14.0
16.0	74.5	50.0	249 100*	313 400*	365 100*	396 200*	437 700*	458 400*	16.0
18.0	72.0	49.4	217 100*	276 700*	322 900*	350 700*	387 700*	406 200*	18.0
20.0	69.5	48.6	191 800*	247 100*	288 900*	313 900*	347 400*	364 100*	20.0
22.0	66.9	47.7	171 100*	222 500*	260 800*	283 600*	314 100*	329 300*	22.0
24.0	64.3	46.8	154 000*	201 200*	237 300*	258 200*	286 200*	300 200*	24.0
26.0	61.6	45.7	139 100	183 000*	217 200*	236 700*	262 600*	275 500*	26.0
28.0	58.9	44.4	124 800	167 500*	200 000*	218 100*	242 200*	254 200*	28.0
30.0	56.0	43.1	112 700	154 100*	185 000*	201 900*	224 400*	234 000*	30.0
32.0	53.1	41.6	102 400	142 400*	171 800*	187 700*	208 900*	213 800*	32.0
34.0	50.0	39.9	93 500	132 000*	160 200*	175 100*	192 500*	196 200*	34.0
36.0	46.8	38.0	85 600	122 900*	149 800*	163 900*	177 100*	180 700*	36.0
38.0	43.4	35.9	78 700	114 600*	140 300*	153 900*	163 300*	166 600*	38.0
40.0	39.7	33.5	72 600	107 300*	131 600*	144 500*	150 700*	153 900*	40.0
42.0	35.7	30.7	67 100	100 600*	123 700*	133 300*	139 300*	142 200*	42.0
44.0	31.2	27.5	62 100	94 500*	116 600*	122 900*	128 600*	131 400*	44.0
46.0	26.0	23.5	57 600	88 900*	109 300*	113 100*	118 400*	121 000*	46.0
48.0	19.5	18.3	53 400	83 800*	99 600*	103 300*	108 300*	110 700*	48.0

Note 1: Capacities above 600 000 kg thru 700 000 kg require 55A boom top.

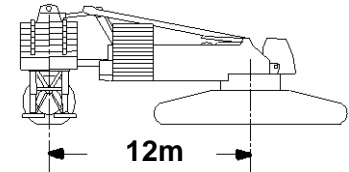


Liftcrane Boom Capacities

Boom No. 55 or No. 55A with 42.7m Mast No. 56
 223 170 kg Crane Counterweight
 145 150 kg Carbody Counterweight
 0 kg thru 390 090 kg Wheeled Counterweight
 at 12m Position
 360 Degree Rating

Meets
 ANSI B30.5
 Requirements
 Similar to
 AS1418.1 and
 AS1418.5

18000 With 21000 MAX-ER



54.9m (180 Ft.) Boom

Oper. Rad. m	Boom Ang. Deg.	Boom Point Elev. m	0 kg Wheeled Counterweight Boom Capacity Kilograms	110 680 kg Wheeled Counterweight Boom Capacity Kilograms	210 470 kg Wheeled Counterweight Boom Capacity Kilograms	270 340 kg Wheeled Counterweight Boom Capacity Kilograms	350 170 kg Wheeled Counterweight Boom Capacity Kilograms	390 090 kg Wheeled Counterweight Boom Capacity Kilograms	Oper. Rad. m
9.8	82.9	57.7	422 100*	517 600*	600 600* ¹	650 400* ¹	684 800* ¹	684 800* ¹	9.8
10.0	82.7	57.7	412 000*	505 400*	586 500*	635 100* ¹	681 000* ¹	684 800* ¹	10.0
11.0	81.6	57.5	373 800*	459 100*	533 100*	577 600*	636 900* ¹	667 000* ¹	11.0
12.0	80.6	57.3	341 800*	420 400*	488 600*	529 500*	584 100*	611 400* ¹	12.0
14.0	78.4	56.9	289 800*	358 900*	417 700*	453 100*	500 200*	523 800*	14.0
16.0	76.3	56.4	248 000*	312 100*	363 900*	395 000*	436 400*	457 200*	16.0
18.0	74.1	55.8	216 100*	275 500*	321 700*	349 500*	386 500*	405 000*	18.0
20.0	71.9	55.1	190 700*	245 900*	287 700*	312 800*	346 200*	362 900*	20.0
22.0	69.7	54.4	170 000*	221 400*	259 600*	282 500*	312 900*	328 200*	22.0
24.0	67.4	53.5	152 900*	200 200*	236 100*	257 100*	285 100*	299 100*	24.0
26.0	65.1	52.6	138 400	182 000*	216 100*	235 500*	261 400*	274 400*	26.0
28.0	62.7	51.5	124 000	166 500*	198 900*	217 000*	241 100*	253 100*	28.0
30.0	60.3	50.4	112 000	153 100*	183 900*	200 800*	223 300*	234 600*	30.0
32.0	57.8	49.1	101 600	141 400*	170 800*	186 600*	207 800*	218 300*	32.0
34.0	55.3	47.7	92 700	131 000*	159 100*	174 100*	194 000*	203 800*	34.0
36.0	52.6	46.2	84 900	121 900*	148 700*	162 900*	181 700*	189 200*	36.0
38.0	49.9	44.5	78 000	113 700*	139 300*	152 800*	170 700*	174 500*	38.0
40.0	47.0	42.6	71 800	106 300*	130 700*	143 800*	158 200*	161 500*	40.0
42.0	44.0	40.5	66 400	99 700*	122 800*	135 600*	146 600*	149 800*	42.0
44.0	40.9	38.2	61 400	93 600*	115 700*	128 100*	136 100*	139 000*	44.0
46.0	37.4	35.6	56 900	88 100*	109 200*	120 900*	126 300*	129 100*	46.0
48.0	33.7	32.7	52 800	83 000*	103 200*	112 000*	117 200*	119 900*	48.0
50.0	29.5	29.2	49 100	78 300*	97 700*	103 600*	108 700*	111 200*	50.0
54.0	18.6	19.5	42 400	69 900*	84 300*	87 600*	92 100*	94 400*	54.0

Note 1: Capacities above 600 000 kg thru 700 000 kg require 55A boom top.

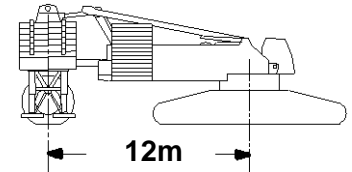


Liftcrane Boom Capacities

Boom No. 55 or No. 55A with 42.7m Mast No. 56
 223 170 kg Crane Counterweight
 145 150 kg Carbody Counterweight
 0 kg thru 390 090 kg Wheeled Counterweight
 at 12m Position
 360 Degree Rating

Meets
ANSI B30.5
Requirements
Similar to
AS1418.1 and
AS1418.5

18000 With 21000 MAX-ER



61.0m (200 Ft.) Boom

Oper. Rad. m	Boom Ang. Deg.	Boom Point Elev. m	0 kg Wheeled Counterweight Boom Capacity Kilograms	110 680 kg Wheeled Counterweight Boom Capacity Kilograms	210 470 kg Wheeled Counterweight Boom Capacity Kilograms	270 340 kg Wheeled Counterweight Boom Capacity Kilograms	350 170 kg Wheeled Counterweight Boom Capacity Kilograms	390 090 kg Wheeled Counterweight Boom Capacity Kilograms	Oper. Rad. m
11.0	82.5	63.7	373 100*	458 700*	532 900*	577 400*	619 700* ¹	619 700* ¹	11.0
12.0	81.5	63.5	340 300*	418 800*	487 000*	527 900*	584 400*	606 400* ¹	12.0
14.0	79.6	63.2	288 400*	357 300*	416 100*	451 500*	498 600*	522 200*	14.0
16.0	77.7	62.7	246 500*	310 500*	362 300*	393 400*	434 800*	455 500*	16.0
18.0	75.7	62.2	214 600*	273 800*	320 100*	347 800*	384 800*	403 300*	18.0
20.0	73.8	61.6	189 200*	244 300*	286 000*	311 100*	344 500*	361 200*	20.0
22.0	71.8	60.9	168 500*	219 800*	257 900*	280 800*	311 300*	326 500*	22.0
24.0	69.8	60.1	151 400*	198 600*	234 400*	255 400*	283 400*	297 400*	24.0
26.0	67.7	59.3	136 900	180 400*	214 400*	233 900*	259 800*	272 700*	26.0
28.0	65.7	58.4	122 800	164 900*	197 200*	215 300*	239 300*	251 400*	28.0
30.0	63.6	57.4	110 700	151 500*	182 200*	199 100*	221 600*	232 900*	30.0
32.0	61.4	56.3	100 300	139 800*	169 100*	185 000*	206 000*	216 700*	32.0
34.0	59.2	55.1	91 400	129 400*	157 400*	172 400*	192 300*	202 300*	34.0
36.0	57.0	53.8	83 500	120 200*	147 000*	161 200*	180 000*	189 400*	36.0
38.0	54.7	52.3	76 600	112 100*	137 700*	151 100*	169 000*	177 900*	38.0
40.0	52.3	50.8	70 500	104 700*	129 000*	142 100*	159 000*	167 200*	40.0
42.0	49.8	49.1	64 900	98 000*	121 200*	133 800*	150 000*	155 100*	42.0
44.0	47.2	47.2	60 000	92 000*	114 100*	126 300*	141 000*	144 100*	44.0
46.0	44.6	45.2	55 500	86 400*	107 500*	119 500*	131 200*	134 100*	46.0
48.0	41.7	42.9	51 400	81 400*	101 600*	113 200*	122 100*	124 900*	48.0
50.0	38.7	40.5	47 700	76 700*	96 100*	107 400*	113 700*	116 300*	50.0
54.0	32.0	34.5	41 100	68 400*	86 300*	93 700*	98 500*	100 800*	54.0
58.0	23.6	26.5	35 400	61 000*	77 100*	80 300*	84 600*	86 700*	58.0

Note 1: Capacities above 600 000 kg thru 700 000 kg require 55A boom top.

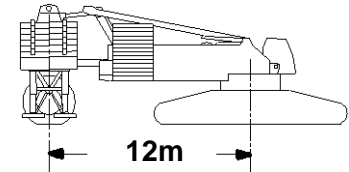


Liftcrane Boom Capacities

Boom No. 55 or No. 55A with 42.7m Mast No. 56
 223 170 kg Crane Counterweight
 145 150 kg Carbody Counterweight
 0 kg thru 390 090 kg Wheeled Counterweight
 at 12m Position
 360 Degree Rating

Meets
 ANSI B30.5
 Requirements
 Similar to
 AS1418.1 and
 AS1418.5

18000 With 21000 MAX-ER



67.1m (220 Ft.) Boom

Oper. Rad. m	Boom Ang. Deg.	Boom Point Elev. m	0 kg Wheeled Counterweight Boom Capacity Kilograms	110 680 kg Wheeled Counterweight Boom Capacity Kilograms	210 470 kg Wheeled Counterweight Boom Capacity Kilograms	270 340 kg Wheeled Counterweight Boom Capacity Kilograms	350 170 kg Wheeled Counterweight Boom Capacity Kilograms	390 090 kg Wheeled Counterweight Boom Capacity Kilograms	Oper. Rad. m
11.6	82.6	69.8	351 300*	432 500*	503 000*	545 400*	571 700*	571 700*	11.6
12.0	82.3	69.7	338 800*	417 400*	485 600*	526 600*	570 900*	570 900*	12.0
14.0	80.6	69.4	287 000*	355 500*	414 400*	449 700*	497 000*	522 600*	14.0
16.0	78.8	68.9	245 000*	308 800*	360 500*	391 600*	433 100*	453 800*	16.0
18.0	77.1	68.5	213 000*	272 100*	318 300*	346 100*	383 100*	401 600*	18.0
20.0	75.3	67.9	187 600*	242 500*	284 300*	309 400*	342 800*	359 500*	20.0
22.0	73.5	67.3	166 900*	218 100*	256 200*	279 000*	309 500*	324 700*	22.0
24.0	71.7	66.7	149 800*	197 000*	232 700*	253 700*	281 700*	295 700*	24.0
26.0	69.9	65.9	135 300	178 800*	212 700*	232 100*	258 000*	271 000*	26.0
28.0	68.0	65.1	121 700	163 200*	195 400*	213 500*	237 600*	249 700*	28.0
30.0	66.2	64.2	109 400	149 800*	180 500*	197 300*	219 900*	231 100*	30.0
32.0	64.2	63.2	99 000	138 100*	167 300*	183 200*	204 300*	214 900*	32.0
34.0	62.3	62.2	90 000	127 800*	155 700*	170 600*	190 500*	200 500*	34.0
36.0	60.3	61.0	82 100	118 600*	145 300*	159 400*	178 200*	187 700*	36.0
38.0	58.3	59.7	75 200	110 400*	136 000*	149 400*	167 200*	176 200*	38.0
40.0	56.3	58.4	69 000	103 000*	127 300*	140 300*	157 300*	165 800*	40.0
42.0	54.2	56.9	63 500	96 300*	119 500*	132 100*	148 300*	156 400*	42.0
44.0	52.0	55.4	58 500	90 300*	112 300*	124 600*	140 100*	147 800*	44.0
46.0	49.7	53.7	54 000	84 800*	105 900*	117 700*	132 600*	138 100*	46.0
48.0	47.4	51.8	49 900	79 700*	99 900*	111 400*	125 400*	128 700*	48.0
50.0	45.0	49.8	46 200	75 000*	94 400*	105 600*	117 400*	120 000*	50.0
54.0	39.8	45.2	39 600	66 700*	84 600*	95 300*	102 100*	104 600*	54.0
58.0	33.9	39.6	33 900	59 500*	76 200*	84 300*	88 800*	91 100*	58.0
62.0	26.9	32.5	29 000	52 000*	68 800*	72 700*	76 800*	78 800*	62.0

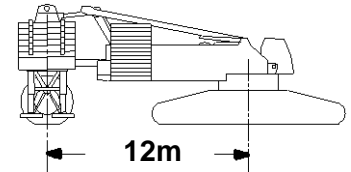


Liftcrane Boom Capacities

Boom No. 55 or No. 55A with 42.7m Mast No. 56
223 170 kg Crane Counterweight
145 150 kg Carbody Counterweight
0 kg thru 390 090 kg Wheeled Counterweight
at 12m Position
360 Degree Rating

Meets
ANSI B30.5
 Requirements
 Similar to
AS1418.1 and
AS1418.5

18000 With
21000 MAX-ER



73.2m (240 Ft.) Boom

Oper. Rad. m	Boom Ang. Deg.	Boom Point Elev. m	0 kg Wheeled Counterweight Boom Capacity Kilograms	110 680 kg Wheeled Counterweight Boom Capacity Kilograms	210 470 kg Wheeled Counterweight Boom Capacity Kilograms	270 340 kg Wheeled Counterweight Boom Capacity Kilograms	350 170 kg Wheeled Counterweight Boom Capacity Kilograms	390 090 kg Wheeled Counterweight Boom Capacity Kilograms	Oper. Rad. m
12.2	82.8	75.8	332 000*	409 400*	476 600*	479 400*	479 400*	479 400*	12.2
14.0	81.4	75.6	286 200*	354 500*	413 400*	451 600*	474 700*	478 800*	14.0
16.0	79.8	75.2	244 200*	307 800*	359 500*	390 600*	435 500*	459 200*	16.0
18.0	78.2	74.7	212 200*	271 100*	317 300*	345 100*	382 100*	400 600*	18.0
20.0	76.5	74.3	186 800*	241 500*	283 300*	308 400*	341 800*	358 500*	20.0
22.0	74.9	73.7	166 000*	217 100*	255 200*	278 100*	308 500*	323 800*	22.0
24.0	73.3	73.1	148 900*	196 200*	231 700*	252 700*	280 700*	294 700*	24.0
26.0	71.6	72.4	134 400	177 900*	211 700*	231 100*	257 000*	270 000*	26.0
28.0	70.0	71.7	121 100	162 400*	194 500*	212 500*	236 600*	248 700*	28.0
30.0	68.3	70.9	108 800	148 900*	179 500*	196 400*	218 900*	230 200*	30.0
32.0	66.6	70.0	98 400	137 200*	166 400*	182 200*	203 300*	213 900*	32.0
34.0	64.8	69.0	89 400	126 900*	154 700*	169 600*	189 600*	199 500*	34.0
36.0	63.1	68.0	81 500	117 700*	144 300*	158 400*	177 300*	186 700*	36.0
38.0	61.3	66.9	74 500	109 500*	135 000*	148 400*	166 300*	175 200*	38.0
40.0	59.4	65.7	68 300	102 100*	126 400*	139 300*	156 300*	164 800*	40.0
42.0	57.6	64.4	62 800	95 400*	118 600*	131 100*	147 300*	155 400*	42.0
44.0	55.7	63.0	57 800	89 400*	111 500*	123 700*	139 100*	146 800*	44.0
46.0	53.7	61.6	53 300	83 900*	104 900*	116 800*	131 600*	139 000*	46.0
48.0	51.7	60.0	49 200	78 800*	99 000*	110 500*	124 700*	131 800*	48.0
50.0	49.7	58.3	45 500	74 100*	93 500*	104 700*	118 400*	124 200*	50.0
54.0	45.3	54.5	38 900	65 800*	83 800*	94 400*	106 100*	108 500*	54.0
58.0	40.6	50.0	33 200	58 700*	75 300*	85 400*	92 600*	94 900*	58.0
62.0	35.4	44.6	28 300	51 500*	68 000*	76 700*	80 800*	83 000*	62.0
66.0	29.4	38.0	23 300*	44 900*	61 500*	66 300*	70 200*	72 200*	66.0
70.0	21.8	29.2	18 700*	39 000*	54 000*	56 600*	60 200*	62 000*	70.0

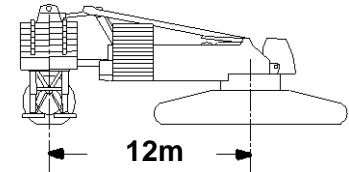


Liftcrane Boom Capacities

Boom No. 55 or No. 55A with 42.7m Mast No. 56
 223 170 kg Crane Counterweight
 145 150 kg Carbody Counterweight
 0 kg thru 390 090 kg Wheeled Counterweight
 at 12m Position
 360 Degree Rating

Meets
 ANSI B30.5
 Requirements
 Similar to
 AS1418.1 and
 AS1418.5

18000 With 21000 MAX-ER



79.2m (260 Ft.) Boom

Oper. Rad. m	Boom Ang. Deg.	Boom Point Elev. m	0 kg Wheeled Counterweight Boom Capacity Kilograms	110 680 kg Wheeled Counterweight Boom Capacity Kilograms	210 470 kg Wheeled Counterweight Boom Capacity Kilograms	270 340 kg Wheeled Counterweight Boom Capacity Kilograms	350 170 kg Wheeled Counterweight Boom Capacity Kilograms	390 090 kg Wheeled Counterweight Boom Capacity Kilograms	Oper. Rad. m
13.7	82.2	81.8	291 300*	360 500*	405 600*	405 600*	405 600*	405 600*	13.7
14.0	82.0	81.7	284 900*	353 400*	400 300*	405 600*	405 600*	405 600*	14.0
16.0	80.6	81.4	242 600*	305 900*	359 600*	388 000*	405 600*	405 600*	16.0
18.0	79.1	81.0	210 500*	269 300*	315 500*	343 500*	380 000*	394 800*	18.0
20.0	77.6	80.5	185 100*	239 700*	281 500*	306 500*	339 900*	356 700*	20.0
22.0	76.1	80.0	164 300*	215 300*	253 300*	276 200*	306 700*	321 900*	22.0
24.0	74.6	79.5	147 100*	194 400*	229 800*	250 800*	278 800*	292 800*	24.0
26.0	73.1	78.8	132 700	176 200*	209 800*	229 300*	255 200*	268 100*	26.0
28.0	71.6	78.2	119 800	160 600*	192 600*	210 700*	234 800*	246 800*	28.0
30.0	70.0	77.4	107 400	147 100*	177 600*	194 500*	217 000*	228 300*	30.0
32.0	68.5	76.6	97 000	135 400*	164 500*	180 300*	201 500*	212 000*	32.0
34.0	66.9	75.8	87 900	125 100*	152 900*	167 800*	187 700*	197 700*	34.0
36.0	65.3	74.8	80 000	115 900*	142 500*	156 600*	175 400*	184 800*	36.0
38.0	63.7	73.8	73 000	107 700*	133 200*	146 600*	164 400*	173 400*	38.0
40.0	62.0	72.8	66 800	100 400*	124 700*	137 500*	154 500*	163 000*	40.0
42.0	60.4	71.6	61 300	93 700*	116 800*	129 300*	145 500*	153 600*	42.0
44.0	58.7	70.4	56 300	87 600*	109 700*	121 800*	137 300*	145 000*	44.0
46.0	56.9	69.1	51 800	82 100*	103 200*	115 000*	129 800*	137 100*	46.0
48.0	55.2	67.7	47 700	77 000*	97 200*	108 700*	122 900*	130 000*	48.0
50.0	53.4	66.2	43 900	72 400*	91 700*	102 900*	116 500*	123 300*	50.0
54.0	49.6	62.9	37 300	64 100*	82 000*	92 600*	105 200*	110 800*	54.0
58.0	45.6	59.1	31 600	56 900*	73 600*	83 600*	94 500*	96 900*	58.0
62.0	41.4	54.7	26 400*	49 600*	66 300*	75 600*	82 700*	84 900*	62.0
66.0	36.6	49.6	21 400*	43 100*	59 800*	68 300*	72 200*	74 300*	66.0
70.0	31.3	43.4	16 800*	37 200*	54 100*	59 000*	62 800*	64 700*	70.0
74.0	25.0	35.5	12 800*	32 000*	48 000*	50 500*	54 000*	55 700*	74.0

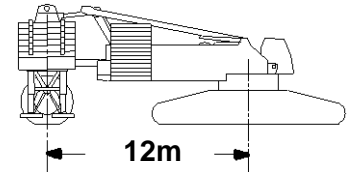


Liftcrane Boom Capacities

Boom No. 55 or No. 55A with 42.7m Mast No. 56
 223 170 kg Crane Counterweight
 145 150 kg Carbody Counterweight
 0 kg thru 390 090 kg Wheeled Counterweight
 at 12m Position
 360 Degree Rating

Meets
 ANSI B30.5
 Requirements
 Similar to
 AS1418.1 and
 AS1418.5

18000 With 21000 MAX-ER



85.3m (280 Ft.) Boom

Oper. Rad. m	Boom Ang. Deg.	Boom Point Elev. m	0 kg Wheeled Counterweight Boom Capacity Kilograms	110 680 kg Wheeled Counterweight Boom Capacity Kilograms	210 470 kg Wheeled Counterweight Boom Capacity Kilograms	270 340 kg Wheeled Counterweight Boom Capacity Kilograms	350 170 kg Wheeled Counterweight Boom Capacity Kilograms	390 090 kg Wheeled Counterweight Boom Capacity Kilograms	Oper. Rad. m
13.7	82.8	87.9	290 100*	344 400*	344 400*	344 400*	344 400*	344 400*	13.7
14.0	82.6	87.9	283 800*	340 100*	344 400*	344 400*	344 400*	344 400*	14.0
16.0	81.2	87.6	241 500*	306 600*	341 900*	344 400*	344 400*	344 400*	16.0
18.0	79.9	87.2	209 400*	268 100*	316 700*	337 900*	344 400*	344 400*	18.0
20.0	78.5	86.8	184 000*	238 500*	280 200*	305 300*	340 300*	342 800*	20.0
22.0	77.1	86.3	163 300*	214 100*	252 200*	275 000*	305 500*	322 500*	22.0
24.0	75.7	85.8	146 000*	193 300*	228 600*	249 600*	277 600*	291 700*	24.0
26.0	74.3	85.2	131 600*	175 100*	208 700*	228 100*	254 000*	266 900*	26.0
28.0	72.9	84.6	118 900	159 500*	191 400*	209 500*	233 600*	245 600*	28.0
30.0	71.5	83.9	106 600	146 100*	176 500*	193 300*	215 900*	227 100*	30.0
32.0	70.1	83.2	96 100	134 300*	163 300*	179 200*	200 300*	210 900*	32.0
34.0	68.6	82.4	87 100	124 000*	151 700*	166 600*	186 500*	196 500*	34.0
36.0	67.2	81.5	79 100	114 800*	141 300*	155 400*	174 300*	183 700*	36.0
38.0	65.7	80.6	72 200	106 600*	132 000*	145 400*	163 300*	172 200*	38.0
40.0	64.2	79.7	65 900	99 300*	123 600*	136 300*	153 300*	161 800*	40.0
42.0	62.7	78.6	60 400	92 600*	115 700*	128 100*	144 300*	152 400*	42.0
44.0	61.2	77.5	55 400	86 600*	108 600*	120 700*	136 100*	143 900*	44.0
46.0	59.6	76.3	50 900	81 000*	102 100*	113 800*	128 600*	136 000*	46.0
48.0	58.0	75.1	46 700	76 000*	96 100*	107 500*	121 700*	128 800*	48.0
50.0	56.4	73.7	43 000	71 300*	90 700*	101 800*	115 400*	122 200*	50.0
54.0	53.1	70.8	36 400	63 000*	80 900*	91 400*	104 100*	110 400*	54.0
58.0	49.6	67.5	30 700	55 900*	72 500*	82 500*	94 300*	99 400*	58.0
62.0	45.9	63.7	25 300*	48 500*	65 200*	74 600*	85 100*	87 300*	62.0
66.0	41.9	59.4	20 300*	42 000*	58 800*	67 600*	74 500*	76 600*	66.0
70.0	37.7	54.4	15 800*	36 200*	53 000*	61 200*	65 100*	67 000*	70.0
74.0	32.9	48.5	11 800*	31 100*	47 900*	53 000*	56 600*	58 400*	74.0
78.0	27.4	41.4	8 100*	26 400*	42 500*	45 400*	48 800*	50 400*	78.0
82.0	20.5	31.9		22 000*	35 800*	38 100*	41 200*	42 700*	82.0

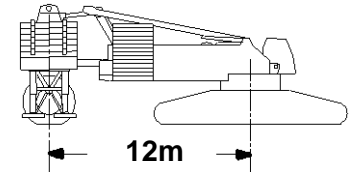


Liftcrane Boom Capacities

Boom No. 55 or No. 55A with 42.7m Mast No. 56
223 170 kg Crane Counterweight
145 150 kg Carbody Counterweight
0 kg thru 390 090 kg Wheeled Counterweight
at 12m Position
360 Degree Rating

Meets
ANSI B30.5
 Requirements
 Similar to
AS1418.1 and
AS1418.5

18000 With 21000 MAX-ER



91.4m (300 Ft.) Boom

Oper. Rad. m	Boom Ang. Deg.	Boom Point Elev. m	0 kg Wheeled Counterweight Boom Capacity Kilograms	110 680 kg Wheeled Counterweight Boom Capacity Kilograms	210 470 kg Wheeled Counterweight Boom Capacity Kilograms	270 340 kg Wheeled Counterweight Boom Capacity Kilograms	350 170 kg Wheeled Counterweight Boom Capacity Kilograms	390 090 kg Wheeled Counterweight Boom Capacity Kilograms	Oper. Rad. m
15.2	82.3	93.9	254 400*	297 100*	297 100*	297 100*	297 100*	297 100*	15.2
16.0	81.8	93.8	240 600*	292 500*	297 100*	297 100*	297 100*	297 100*	16.0
18.0	80.6	93.4	207 700*	267 900*	297 100*	297 100*	297 100*	297 100*	18.0
20.0	79.3	93.0	182 200*	236 600*	278 900*	295 300*	297 100*	297 100*	20.0
22.0	78.0	92.6	161 500*	212 200*	250 300*	274 300*	294 400*	297 100*	22.0
24.0	76.7	92.1	144 300*	191 500*	226 700*	247 700*	277 300*	287 800*	24.0
26.0	75.4	91.6	129 800*	173 300*	206 700*	226 200*	252 100*	265 000*	26.0
28.0	74.1	91.0	117 200	157 700*	189 500*	207 600*	231 700*	243 700*	28.0
30.0	72.8	90.4	105 200	144 200*	174 600*	191 400*	214 000*	225 200*	30.0
32.0	71.5	89.7	94 600	132 500*	161 400*	177 300*	198 400*	209 000*	32.0
34.0	70.1	88.9	85 500	122 200*	149 800*	164 700*	184 600*	194 600*	34.0
36.0	68.8	88.2	77 600	113 000*	139 400*	153 500*	172 400*	181 800*	36.0
38.0	67.4	87.3	70 600	104 800*	130 100*	143 500*	161 400*	170 300*	38.0
40.0	66.1	86.4	64 400	97 400*	121 700*	134 400*	151 400*	159 900*	40.0
42.0	64.7	85.5	58 800	90 800*	113 900*	126 300*	142 400*	150 500*	42.0
44.0	63.3	84.4	53 800	84 700*	106 800*	118 800*	134 300*	141 900*	44.0
46.0	61.8	83.4	49 200	79 200*	100 300*	111 900*	126 700*	134 200*	46.0
48.0	60.4	82.2	45 100	74 100*	94 300*	105 700*	119 800*	126 900*	48.0
50.0	58.9	81.0	41 300	69 500*	88 800*	99 900*	113 500*	120 300*	50.0
54.0	55.9	78.4	34 700	61 200*	79 100*	89 600*	102 200*	108 500*	54.0
58.0	52.8	75.4	28 800*	53 900*	70 700*	80 600*	92 400*	98 300*	58.0
62.0	49.5	72.1	23 100*	46 400*	63 400*	72 800*	83 800*	88 400*	62.0
66.0	46.1	68.3	18 100*	40 000*	57 000*	65 800*	75 300*	77 400*	66.0
70.0	42.5	64.1	13 700*	34 200*	51 300*	59 500*	65 900*	67 900*	70.0
74.0	38.5	59.2	9 700*	29 000*	46 100*	53 700*	57 400*	59 300*	74.0
78.0	34.2	53.6		24 400*	40 600*	46 300*	49 700*	51 500*	78.0
82.0	29.3	46.9		20 100*	35 500*	39 400*	42 600*	44 300*	82.0
86.0	23.5	38.5		16 200*	30 600*	32 900*	35 900*	37 400*	86.0

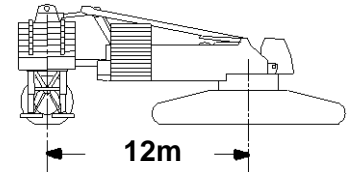


Liftcrane Boom Capacities

Boom No. 55 or No. 55A with 42.7m Mast No. 56
 223 170 kg Crane Counterweight
 145 150 kg Carbody Counterweight
 0 kg thru 390 090 kg Wheeled Counterweight
 at 12m Position
 360 Degree Rating

Meets
ANSI B30.5
Requirements
Similar to
AS1418.1 and
AS1418.5

18000 With 21000 MAX-ER



97.5m (320 Ft.) Boom

Oper. Rad. m	Boom Ang. Deg.	Boom Point Elev. m	0 kg Wheeled Counterweight Boom Capacity Kilograms	110 680 kg Wheeled Counterweight Boom Capacity Kilograms	210 470 kg Wheeled Counterweight Boom Capacity Kilograms	270 340 kg Wheeled Counterweight Boom Capacity Kilograms	350 170 kg Wheeled Counterweight Boom Capacity Kilograms	390 090 kg Wheeled Counterweight Boom Capacity Kilograms	Oper. Rad. m
15.2	82.8	100.0	254 600*	255 000*	255 000*	255 000*	255 000*	255 000*	15.2
16.0	82.3	99.9	240 800*	255 000*	255 000*	255 000*	255 000*	255 000*	16.0
18.0	81.2	99.6	207 900*	255 000*	255 000*	255 000*	255 000*	255 000*	18.0
20.0	80.0	99.2	182 400*	237 000*	255 000*	255 000*	255 000*	255 000*	20.0
22.0	78.8	98.8	161 600*	212 300*	248 300*	255 000*	255 000*	255 000*	22.0
24.0	77.6	98.4	144 400*	191 600*	227 200*	246 300*	255 000*	255 000*	24.0
26.0	76.3	97.9	129 900*	173 400*	206 800*	226 200*	252 600*	254 700*	26.0
28.0	75.1	97.3	117 400	157 900*	189 600*	207 700*	231 800*	245 100*	28.0
30.0	73.9	96.8	105 600	144 400*	174 600*	191 500*	214 100*	225 300*	30.0
32.0	72.7	96.1	95 000	132 700*	161 500*	177 400*	198 500*	209 100*	32.0
34.0	71.4	95.4	85 900	122 300*	149 900*	164 800*	184 700*	194 700*	34.0
36.0	70.2	94.7	77 900	113 200*	139 500*	153 600*	172 500*	181 900*	36.0
38.0	68.9	93.9	70 900	105 000*	130 300*	143 600*	161 500*	170 400*	38.0
40.0	67.6	93.1	64 700	97 600*	121 800*	134 600*	151 600*	160 100*	40.0
42.0	66.4	92.2	59 100	90 900*	114 100*	126 400*	142 500*	150 600*	42.0
44.0	65.1	91.3	54 100	84 900*	106 900*	118 900*	134 400*	142 100*	44.0
46.0	63.8	90.3	49 600	79 400*	100 500*	112 100*	126 800*	134 300*	46.0
48.0	62.4	89.2	45 400	74 300*	94 500*	105 800*	120 000*	127 100*	48.0
50.0	61.1	88.1	41 700	69 600*	89 000*	100 000*	113 600*	120 400*	50.0
54.0	58.3	85.7	35 000	61 400*	79 300*	89 700*	102 300*	108 700*	54.0
58.0	55.5	83.0	29 300*	54 200*	70 900*	80 800*	92 600*	98 400*	58.0
62.0	52.6	80.0	23 600*	47 000*	63 600*	73 000*	84 000*	89 500*	62.0
66.0	49.5	76.7	18 600*	40 500*	57 200*	66 000*	76 500*	80 800*	66.0
70.0	46.3	72.9	14 200*	34 800*	51 500*	59 700*	69 000*	71 100*	70.0
74.0	42.9	68.7	10 200*	29 600*	46 400*	54 200*	60 500*	62 400*	74.0
78.0	39.2	64.0		25 000*	41 300*	49 100*	52 900*	54 600*	78.0
82.0	35.3	58.6		20 800*	36 200*	42 600*	45 900*	47 600*	82.0
86.0	30.9	52.2		16 900*	31 600*	36 300*	39 500*	41 000*	86.0
90.0	25.8	44.5		13 300*	27 400*	30 500*	33 400*	34 800*	90.0
94.0	19.4	34.5		10 000*	22 700*	24 700*	27 400*	28 800*	94.0

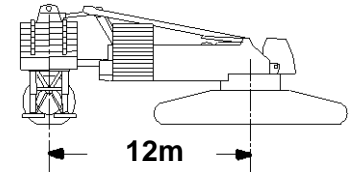


Liftcrane Boom Capacities

Boom No. 55 or No. 55A with 42.7m Mast No. 56
 223 170 kg Crane Counterweight
 145 150 kg Carbody Counterweight
 0 kg thru 390 090 kg Wheeled Counterweight
 at 12m Position
 360 Degree Rating

Meets
 ANSI B30.5
 Requirements
 Similar to
 AS1418.1 and
 AS1418.5

18000 With 21000 MAX-ER



103.6m (340 Ft.) Boom

Oper. Rad. m	Boom Ang. Deg.	Boom Point Elev. m	110 680 kg Wheeled Counterweight Boom Capacity Kilograms	210 470 kg Wheeled Counterweight Boom Capacity Kilograms	270 340 kg Wheeled Counterweight Boom Capacity Kilograms	350 170 kg Wheeled Counterweight Boom Capacity Kilograms	390 090 kg Wheeled Counterweight Boom Capacity Kilograms	Oper. Rad. m
16.8	82.4	106.0	223 100*	223 100*	223 100*	223 100*	223 100*	16.8
18.0	81.7	105.8	223 100*	223 100*	223 100*	223 100*	223 100*	18.0
20.0	80.6	105.4	222 400*	223 100*	223 100*	223 100*	223 100*	20.0
22.0	79.4	105.1	212 100*	223 100*	223 100*	223 100*	223 100*	22.0
24.0	78.3	104.6	189 700*	221 400*	223 100*	223 100*	223 100*	24.0
26.0	77.2	104.2	171 600*	204 900*	222 300*	223 100*	223 100*	26.0
28.0	76.0	103.7	156 000*	187 700*	206 000*	222 300*	223 100*	28.0
30.0	74.9	103.1	142 600*	172 700*	189 600*	213 400*	220 500*	30.0
32.0	73.7	102.5	130 800*	159 600*	175 400*	196 600*	207 100*	32.0
34.0	72.6	101.9	120 500*	148 000*	162 900*	182 800*	192 800*	34.0
36.0	71.4	101.2	111 300*	137 600*	151 700*	170 600*	180 000*	36.0
38.0	70.2	100.5	103 100*	128 300*	141 700*	159 500*	168 500*	38.0
40.0	69.0	99.7	95 700*	119 900*	132 700*	149 600*	158 100*	40.0
42.0	67.8	98.9	89 100*	112 300*	124 500*	140 600*	148 700*	42.0
44.0	66.6	98.0	83 000*	105 100*	117 000*	132 400*	140 200*	44.0
46.0	65.4	97.1	77 500*	98 600*	110 200*	124 900*	132 300*	46.0
48.0	64.2	96.1	72 500*	92 600*	103 900*	118 100*	125 200*	48.0
50.0	62.9	95.1	67 800*	87 200*	98 100*	111 700*	118 500*	50.0
54.0	60.4	92.8	59 500*	77 500*	87 800*	100 400*	106 800*	54.0
58.0	57.8	90.4	52 200*	69 100*	78 900*	90 600*	96 500*	58.0
62.0	55.1	87.6	44 800*	61 800*	71 100*	82 100*	87 600*	62.0
66.0	52.4	84.6	38 300*	55 400*	64 100*	74 600*	79 800*	66.0
70.0	49.5	81.3	32 600*	49 600*	57 900*	67 900*	71 300*	70.0
74.0	46.5	77.6	27 400*	44 500*	52 400*	60 700*	62 600*	74.0
78.0	43.3	73.4	22 800*	39 100*	47 400*	52 900*	54 800*	78.0
82.0	39.9	68.8	18 600*	34 100*	42 500*	46 000*	47 700*	82.0
86.0	36.2	63.5	14 800*	29 500*	36 400*	39 600*	41 200*	86.0
90.0	32.2	57.4	11 300*	25 300*	30 700*	33 700*	35 200*	90.0
94.0	27.7	50.3	8 000*	21 400*	25 400*	28 200*	29 600*	94.0
98.0	22.3	41.3		17 800*	20 200*	22 800*	24 100*	98.0

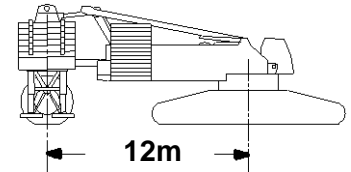


Liftcrane Boom Capacities

Boom No. 55 or No. 55A with 42.7m Mast No. 56
 223 170 kg Crane Counterweight
 145 150 kg Carbody Counterweight
 0 kg thru 390 090 kg Wheeled Counterweight
 at 12m Position
 360 Degree Rating

Meets
ANSI B30.5
Requirements
Similar to
AS1418.1 and
AS1418.5

18000 With 21000 MAX-ER



109.7m (360 Ft.) Boom

Oper. Rad. m	Boom Ang. Deg.	Boom Point Elev. m	110 680 kg Wheeled Counterweight Boom Capacity Kilograms	210 470 kg Wheeled Counterweight Boom Capacity Kilograms	270 340 kg Wheeled Counterweight Boom Capacity Kilograms	350 170 kg Wheeled Counterweight Boom Capacity Kilograms	390 090 kg Wheeled Counterweight Boom Capacity Kilograms	Oper. Rad. m
16.8	82.8	112.1	195 200*	195 200*	195 200*	195 200*	195 200*	16.8
18.0	82.1	111.9	195 200*	195 200*	195 200*	195 200*	195 200*	18.0
20.0	81.1	111.6	195 200*	195 200*	195 200*	195 200*	195 200*	20.0
22.0	80.0	111.3	195 200*	195 200*	195 200*	195 200*	195 200*	22.0
24.0	79.0	110.9	187 400*	195 200*	195 200*	195 200*	195 200*	24.0
26.0	77.9	110.4	170 300*	195 000*	195 200*	195 200*	195 200*	26.0
28.0	76.8	110.0	154 700*	187 400*	195 200*	195 200*	195 200*	28.0
30.0	75.7	109.4	141 200*	171 300*	188 000*	195 200*	195 200*	30.0
32.0	74.7	108.9	129 500*	158 200*	174 100*	195 200*	195 200*	32.0
34.0	73.6	108.3	119 200*	146 600*	161 500*	181 400*	192 500*	34.0
36.0	72.5	107.6	110 000*	136 200*	150 400*	169 200*	178 600*	36.0
38.0	71.4	107.0	101 800*	126 900*	140 300*	158 200*	167 100*	38.0
40.0	70.3	106.2	94 400*	118 500*	131 300*	148 300*	156 700*	40.0
42.0	69.1	105.5	87 800*	110 900*	123 100*	139 300*	147 400*	42.0
44.0	68.0	104.6	81 700*	103 800*	115 600*	131 100*	138 800*	44.0
46.0	66.9	103.8	76 200*	97 300*	108 800*	123 600*	131 000*	46.0
48.0	65.7	102.9	71 100*	91 300*	102 500*	116 700*	123 800*	48.0
50.0	64.6	101.9	66 500*	85 900*	96 700*	110 400*	117 200*	50.0
54.0	62.2	99.8	58 200*	76 100*	86 400*	99 100*	105 400*	54.0
58.0	59.8	97.6	50 800*	67 800*	77 600*	89 300*	95 200*	58.0
62.0	57.3	95.0	43 300*	60 500*	69 800*	80 800*	86 300*	62.0
66.0	54.8	92.3	36 800*	54 000*	62 800*	73 300*	78 500*	66.0
70.0	52.2	89.2	31 100*	48 400*	56 600*	66 600*	71 500*	70.0
74.0	49.4	85.9	25 900*	42 700*	51 100*	60 600*	63 300*	74.0
78.0	46.6	82.2	21 300*	37 400*	46 100*	53 500*	55 400*	78.0
82.0	43.6	78.1	17 200*	32 600*	41 000*	46 500*	48 200*	82.0
86.0	40.4	73.5	13 300*	28 100*	36 400*	40 100*	41 700*	86.0
90.0	37.0	68.4	9 900*	23 900*	31 200*	34 300*	35 800*	90.0
94.0	33.4	62.5		20 100*	26 000*	28 800*	30 300*	94.0
98.0	29.2	55.8		16 500*	21 000*	23 800*	25 100*	98.0
102.0	24.5	47.6		13 100*	16 300*	18 900*	20 200*	102.0
106.0	18.6	37.0		9 800*	11 700*	14 100*	15 300*	106.0

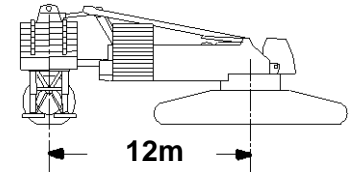


Liftcrane Boom Capacities

Boom No. 55 or No. 55A with 42.7m Mast No. 56
 223 170 kg Crane Counterweight
 145 150 kg Carbody Counterweight
 0 kg thru 390 090 kg Wheeled Counterweight
 at 12m Position
 360 Degree Rating

Meets
 ANSI B30.5
 Requirements
 Similar to
 AS1418.1 and
 AS1418.5

18000 With 21000 MAX-ER



115.8m (380 Ft.) Boom

Oper. Rad. m	Boom Ang. Deg.	Boom Point Elev. m	210 470 kg Wheeled Counterweight Boom Capacity Kilograms	270 340 kg Wheeled Counterweight Boom Capacity Kilograms	350 170 kg Wheeled Counterweight Boom Capacity Kilograms	390 090 kg Wheeled Counterweight Boom Capacity Kilograms	Oper. Rad. m
18.3	82.4	118.1	169 700*	169 700*	169 700*	169 700*	18.3
20.0	81.6	117.8	169 700*	169 700*	169 700*	169 700*	20.0
22.0	80.6	117.5	169 700*	169 700*	169 700*	169 700*	22.0
24.0	79.5	117.1	169 700*	169 700*	169 700*	169 700*	24.0
26.0	78.5	116.7	169 700*	169 700*	169 700*	169 700*	26.0
28.0	77.5	116.2	169 700*	169 700*	169 700*	169 700*	28.0
30.0	76.5	115.7	167 900*	169 700*	169 700*	169 700*	30.0
32.0	75.5	115.2	157 200*	169 700*	169 700*	169 700*	32.0
34.0	74.5	114.7	145 600*	160 900*	169 700*	169 700*	34.0
36.0	73.4	114.0	135 300*	149 400*	166 700*	169 500*	36.0
38.0	72.4	113.4	126 000*	139 400*	157 400*	166 000*	38.0
40.0	71.3	112.7	117 600*	130 400*	147 300*	155 800*	40.0
42.0	70.3	112.0	110 000*	122 100*	138 300*	146 400*	42.0
44.0	69.2	111.2	102 900*	114 700*	130 100*	137 900*	44.0
46.0	68.2	110.4	96 400*	107 800*	122 600*	130 000*	46.0
48.0	67.1	109.6	90 400*	101 600*	115 800*	122 900*	48.0
50.0	66.0	108.7	85 000*	95 800*	109 400*	116 300*	50.0
54.0	63.8	106.7	75 200*	85 500*	98 100*	104 500*	54.0
58.0	61.6	104.6	66 900*	76 600*	88 400*	94 300*	58.0
62.0	59.3	102.2	59 600*	68 800*	79 900*	85 400*	62.0
66.0	56.9	99.7	53 200*	62 000*	72 300*	77 500*	66.0
70.0	54.5	96.9	47 300*	55 800*	65 700*	70 600*	70.0
74.0	52.0	93.8	41 500*	50 200*	59 700*	64 200*	74.0
78.0	49.4	90.5	36 300*	45 000*	54 300*	56 300*	78.0
82.0	46.7	86.8	31 500*	39 900*	47 400*	49 200*	82.0
86.0	43.9	82.7	27 200*	35 200*	41 000*	42 600*	86.0
90.0	40.9	78.2	23 000*	30 900*	35 100*	36 700*	90.0
94.0	37.8	73.2	19 200*	26 700*	29 700*	31 200*	94.0
98.0	34.3	67.6	15 700*	21 900*	24 700*	26 100*	98.0
102.0	30.6	61.1	12 400*	17 400*	20 000*	21 400*	102.0
106.0	26.3	53.5	9 300*	13 100*	15 600*	16 800*	106.0
110.0	21.3	44.1		8 900*	11 200*	12 400*	110.0

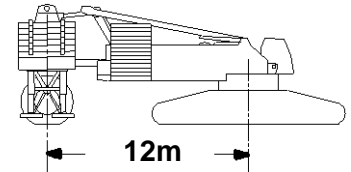


Liftcrane Boom Capacities

Boom No. 55 or No. 55A with 42.7m Mast No. 56
 223 170 kg Crane Counterweight
 145 150 kg Carbody Counterweight
 0 kg thru 390 090 kg Wheeled Counterweight
 at 12m Position
 360 Degree Rating

Meets
 ANSI B30.5
 Requirements
 Similar to
 AS1418.1 and
 AS1418.5

18000 With 21000 MAX-ER



121.9m (400 Ft.) Boom

Oper. Rad. m	Boom Ang. Deg.	Boom Point Elev. m	210 470 kg Wheeled Counterweight Boom Capacity Kilograms	270 340 kg Wheeled Counterweight Boom Capacity Kilograms	350 170 kg Wheeled Counterweight Boom Capacity Kilograms	390 090 kg Wheeled Counterweight Boom Capacity Kilograms	Oper. Rad. m
18.3	82.8	124.2	150 000*	150 000*	150 000*	150 000*	18.3
20.0	82.0	124.0	150 000*	150 000*	150 000*	150 000*	20.0
22.0	81.0	123.7	150 000*	150 000*	150 000*	150 000*	22.0
24.0	80.1	123.3	150 000*	150 000*	150 000*	150 000*	24.0
26.0	79.1	122.9	150 000*	150 000*	150 000*	150 000*	26.0
28.0	78.2	122.5	150 000*	150 000*	150 000*	150 000*	28.0
30.0	77.2	122.0	150 000*	150 000*	150 000*	150 000*	30.0
32.0	76.2	121.5	150 000*	150 000*	150 000*	150 000*	32.0
34.0	75.3	121.0	144 800*	150 000*	150 000*	150 000*	34.0
36.0	74.3	120.4	133 800*	146 800*	149 900*	149 900*	36.0
38.0	73.3	119.8	124 500*	138 000*	149 500*	149 500*	38.0
40.0	72.3	119.2	116 200*	128 900*	146 400*	148 800*	40.0
42.0	71.3	118.5	108 500*	120 700*	136 900*	145 500*	42.0
44.0	70.3	117.7	101 500*	113 300*	128 700*	136 400*	44.0
46.0	69.3	117.0	95 000*	106 400*	121 200*	128 600*	46.0
48.0	68.3	116.2	89 100*	100 100*	114 300*	121 400*	48.0
50.0	67.3	115.3	83 600*	94 400*	108 000*	114 800*	50.0
54.0	65.2	113.5	73 900*	84 100*	96 700*	103 000*	54.0
58.0	63.1	111.5	65 500*	75 200*	87 000*	92 900*	58.0
62.0	61.0	109.3	58 200*	67 400*	78 500*	84 000*	62.0
66.0	58.8	106.9	51 700*	60 600*	71 000*	76 100*	66.0
70.0	56.5	104.3	45 400*	54 400*	64 300*	69 200*	70.0
74.0	54.2	101.5	39 600*	48 800*	58 300*	63 000*	74.0
78.0	51.9	98.4	34 400*	43 200*	52 900*	56 600*	78.0
82.0	49.4	95.1	29 700*	38 000*	47 500*	49 300*	82.0
86.0	46.8	91.4	25 400*	33 400*	41 000*	42 700*	86.0
90.0	44.2	87.4	21 400*	29 100*	35 100*	36 800*	90.0
94.0	41.4	82.9	17 600*	25 100*	29 800*	31 300*	94.0
98.0	38.4	78.0	14 100*	21 500*	24 700*	26 200*	98.0
102.0	35.2	72.5	10 800*	17 400*	20 200*	21 500*	102.0
106.0	31.7	66.3	7 800*	13 200*	15 800*	17 100*	106.0
110.0	27.9	59.1		9 300*	11 700*	12 900*	110.0
114.0	23.4	50.5			7 700*	8 900*	114.0

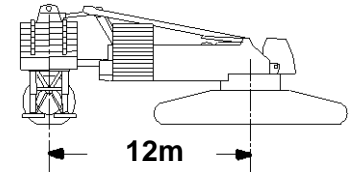


Liftcrane Boom Capacities

Boom No. 55 or No. 55A with 42.7m Mast No. 56
 223 170 kg Crane Counterweight
 145 150 kg Carbody Counterweight
 0 kg thru 390 090 kg Wheeled Counterweight
 at 12m Position
 360 Degree Rating

Meets
 ANSI B30.5
 Requirements
 Similar to
 AS1418.1 and
 AS1418.5

18000 With 21000 MAX-ER



128.0m (420 Ft.) Boom

Oper. Rad. m	Boom Ang. Deg.	Boom Point Elev. m	210 470 kg Wheeled Counterweight Boom Capacity Kilograms	270 340 kg Wheeled Counterweight Boom Capacity Kilograms	350 170 kg Wheeled Counterweight Boom Capacity Kilograms	390 090 kg Wheeled Counterweight Boom Capacity Kilograms	Oper. Rad. m
19.8	82.5	130.2	131 600*	131 600*	131 600*	131 600*	19.8
20.0	82.4	130.1	131 600*	131 600*	131 600*	131 600*	20.0
22.0	81.5	129.8	131 600*	131 600*	131 600*	131 600*	22.0
24.0	80.6	129.5	131 600*	131 600*	131 600*	131 600*	24.0
26.0	79.6	129.1	131 600*	131 600*	131 600*	131 600*	26.0
28.0	78.7	128.7	131 600*	131 600*	131 600*	131 600*	28.0
30.0	77.8	128.3	131 600*	131 600*	131 600*	131 600*	30.0
32.0	76.9	127.8	131 600*	131 600*	131 600*	131 600*	32.0
34.0	76.0	127.3	131 200*	131 200*	131 200*	131 200*	34.0
36.0	75.0	126.7	130 600*	130 700*	130 700*	130 700*	36.0
38.0	74.1	126.2	124 000*	130 200*	130 200*	130 200*	38.0
40.0	73.2	125.6	115 500*	128 800*	129 700*	129 700*	40.0
42.0	72.2	124.9	107 800*	120 000*	129 100*	129 100*	42.0
44.0	71.3	124.2	100 800*	112 500*	127 500*	128 600*	44.0
46.0	70.3	123.5	94 300*	105 700*	120 500*	127 500*	46.0
48.0	69.4	122.7	88 400*	99 400*	113 600*	120 800*	48.0
50.0	68.4	121.9	82 900*	93 700*	107 300*	114 100*	50.0
54.0	66.5	120.2	73 200*	83 400*	96 000*	102 300*	54.0
58.0	64.5	118.3	64 800*	74 500*	86 300*	92 100*	58.0
62.0	62.5	116.3	57 500*	66 700*	77 800*	83 300*	62.0
66.0	60.4	114.1	51 000*	59 900*	70 200*	75 400*	66.0
70.0	58.3	111.6	44 500*	53 700*	63 600*	68 500*	70.0
74.0	56.2	109.0	38 700*	48 000*	57 600*	62 200*	74.0
78.0	54.0	106.1	33 500*	42 300*	52 300*	56 600*	78.0
82.0	51.7	103.0	28 800*	37 100*	47 400*	50 300*	82.0
86.0	49.4	99.7	24 500*	32 500*	41 900*	43 700*	86.0
90.0	47.0	96.0	20 600*	28 200*	36 000*	37 600*	90.0
94.0	44.4	92.0	16 900*	24 200*	30 500*	32 100*	94.0
98.0	41.8	87.6	13 400*	20 600*	25 600*	27 000*	98.0
102.0	39.0	82.8	10 200*	17 300*	20 900*	22 300*	102.0
106.0	36.0	77.4		14 000*	16 700*	18 000*	106.0
110.0	32.7	71.4		10 100*	12 600*	13 900*	110.0
114.0	29.2	64.6			8 800*	10 000*	114.0

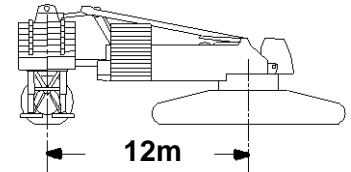


Liftcrane Boom Capacities

Boom No. 55 or No. 55A with 42.7m Mast No. 56
 223 170 kg Crane Counterweight
 145 150 kg Carbody Counterweight
 0 kg thru 390 090 kg Wheeled Counterweight
 at 12m Position
 360 Degree Rating

Meets
 ANSI B30.5
 Requirements
 Similar to
 AS1418.1 and
 AS1418.5

18000 With 21000 MAX-ER



134.1m (440 Ft.) Boom

Oper. Rad. m	Boom Ang. Deg.	Boom Point Elev. m	270 340 kg Wheeled Counterweight Boom Capacity Kilograms	350 170 kg Wheeled Counterweight Boom Capacity Kilograms	390 090 kg Wheeled Counterweight Boom Capacity Kilograms	Oper. Rad. m
19.8	82.8	136.3	117 200*	117 200*	117 200*	19.8
20.0	82.7	136.3	117 200*	117 200*	117 200*	20.0
22.0	81.9	136.0	117 200*	117 200*	117 200*	22.0
24.0	81.0	135.7	117 200*	117 200*	117 200*	24.0
26.0	80.1	135.3	117 200*	117 200*	117 200*	26.0
28.0	79.3	134.9	117 200*	117 200*	117 200*	28.0
30.0	78.4	134.5	117 200*	117 200*	117 200*	30.0
32.0	77.5	134.1	117 200*	117 200*	117 200*	32.0
34.0	76.6	133.6	116 800*	116 800*	116 800*	34.0
36.0	75.7	133.1	116 400*	116 400*	116 400*	36.0
38.0	74.9	132.5	116 000*	116 000*	116 000*	38.0
40.0	74.0	131.9	115 500*	115 500*	115 500*	40.0
42.0	73.1	131.3	115 100*	115 100*	115 100*	42.0
44.0	72.2	130.7	111 200*	114 600*	114 600*	44.0
46.0	71.3	130.0	104 200*	114 100*	114 100*	46.0
48.0	70.4	129.3	98 000*	112 200*	113 600*	48.0
50.0	69.4	128.5	92 200*	105 900*	112 100*	50.0
54.0	67.6	126.9	81 900*	94 600*	100 900*	54.0
58.0	65.7	125.1	73 000*	84 800*	90 700*	58.0
62.0	63.8	123.2	65 300*	76 300*	81 800*	62.0
66.0	61.9	121.1	58 400*	68 800*	74 000*	66.0
70.0	59.9	118.8	52 300*	62 100*	67 000*	70.0
74.0	57.9	116.3	46 000*	56 200*	60 800*	74.0
78.0	55.9	113.6	40 400*	50 800*	55 200*	78.0
82.0	53.8	110.7	35 200*	46 000*	50 100*	82.0
86.0	51.6	107.6	30 500*	41 200*	43 500*	86.0
90.0	49.4	104.3	26 300*	35 700*	37 400*	90.0
94.0	47.0	100.6	22 400*	30 200*	31 800*	94.0
98.0	44.6	96.6	18 700*	25 200*	26 700*	98.0
102.0	42.1	92.3	15 400*	20 600*	22 000*	102.0
106.0	39.5	87.6	12 300*	16 300*	17 700*	106.0
110.0	36.7	82.3	9 400*	12 300*	13 600*	110.0
114.0	33.6	76.5		8 600*	9 800*	114.0