

REQUIRED FOR VARIOUS JIB LENGTHS (A)											
ITEM NO.	100	102	105	106	101	108	103	104	107	109	
JIB LENGTH	INSERT 10 FT-00 (3.05 M) ASSY	INSERT 20 FT-00 (6.10 M) ASSY	PENDANT 9 FT-6.00 (2.89 M)	PENDANT 19 FT-00 (5.79 M)	PIN JIB JOINT	PIN COTTER	TIMBER	BOLT	ELASTIC STOP NUT	WASHER FLAT	
FEET METERS											
30	9.14	0	0	0	4	4	0	4	4	8	
40	12.19	1	0	2	8	8	1	8	8	16	
50	15.24	OR 2	0	4	0	12		12	12	24	
		0	1	0	2	8		8			
60	18.29	OR 1	1	2	2	12		12	3	16	32
		3	0	6	0	16		16			
70	21.33	OR 0	2	0	4	12		12			
		2	1	4	2	16		16	20	20	40
80	24.38	OR 1	2	2	4	16		16			
		3	1	6	2	20		20	5	24	48

REQUIRED FOR VARIOUS JIB ANGLES				
ITEM NO.	202	200	201	203
JIB ANGLE	PENDANT 4 FT-8.00 (1.42) M	LINK	PIN	PIN COTTER
5°	0	0	2	6
15°	0	2	4	8
25°	2	0	2	6

- ① MINIMUM BOOM LENGTH REQUIRED FOR JIB = 88.6 FT (27.0 M).
- ② ON DWG. A02422.
- ③ ON DWG. A02308.
- ④ ON DWG. A01891.
- ⑤ INSERTS AND CORRESPONDING PENDANTS MUST BE INSTALLED IN ORDER OF ASCENDING LENGTH STARTING AT JIB BUTT.
- ⑥ TOP 32948 CAN BE USED IN PLACE OF TOP A01810 (ITEM 37), GUARD WIRE ROPE A02370 (ITEM 39) AND PIN SNAP 563823 (ITEM 28). USE OF 32948 REQUIRES THAT THE WEDGE SOCKET BE REMOVED FROM THE LOAD LINE TO REEVE.
- ⑦ STRUT 177131 CAN BE USED IN PLACE OF STRUT A01797 (ITEM 36), GUARD WIRE ROPE A02066 (ITEM 38) AND PIN SNAP 563823 (ITEM 28). USE OF 177131 REQUIRES THAT THE WEDGE SOCKET BE REMOVED FROM THE LOADLINE TO REEVE.
- ⑧ JIB TOP 15 FT WELDMENT I.D. TAG #A01810.
- ⑨ JIB BUTT 15 FT WELDMENT I.D. TAG #177054.
- ⑩ JIB INSERT 10 FT WELDMENT I.D. TAG #32938.
- ⑪ JIB INSERT 20 FT WELDMENT I.D. TAG #176938.
- ⑫ REMOVE SOCKET, WEDGE AND PIN PROVIDED WITH HOOK AND WEIGHT BALL 218214 (ITEM 300) OR BLOCK HOOK 237095 (ITEM 301) AND REPLACE WITH SOCKET BUTTON A11040 (ITEM 302).
- ⑬ USE EXISTING SOCKET, WEDGE AND PIN PROVIDED WITH HOOK AND WEIGHT BALL 218214 (ITEM 300) OR BLOCK HOOK 237095 (ITEM 301).
- ⑭ USE ADAPTER 196135 FROM OPTION 2 ON 090317 (ITEM 3).
- ⑮ THESE ARE EXTRA PEANDANT PINS IDENTICAL TO THE ONES THAT COME WITH THE PENDANT (277432). THEY ARE TO BE USED TO STOW THE SPREADER FRAMEWORK FOR SHIPPING.
- ⑯ JIB TOP 81010308 CAN BE USED IN PLACE OF JIB TOP A01810.
- ⑰ ATTACH TIMBERS SO THEY ARE FREE TO SLIDE UNDER THERMAL EXPANSION/CONTRACTION OF PLASTIC

BILL OF MATERIAL					ASSEMBLIES USED IN
NO.	QTY	DESCRIPTION	MATERIAL	QTY	
		JIB FIXED ASSY #134 FOR #76 BOOM			
1	2	PIN 2 HOLE 2.00 DIA X 4.00 LG	73045		
2	2	PIN 1 HOLE W/HD 2.25 DIA X 3.55 LG	75052		
3	1	UNIV WR ANCHOR JOINT ASSY	90317		
4	1	SHAFT ASSEMBLY JIB POINT	90318		
5					
6	2	PLATE KEEPER .50 THICK	169810	4	10-29-15 CMT
7	2	PIN 2 HOLE 2.00 DIA X 4.69 LG	170851		FBI ADDED
8	1	SHEAVE WIRE ROPE ASSEMBLY	176799		ITEM 42
9	1	BUTT JIB 15 FT #134 (4.57 M)	177054	9	(SHEET 1)
10	1	PIN KEEPER 5.12 DIA X 5.25 LG	177219		
11	1	TIMBER 27.00 LG X 3.50 W	81017678		
12	2	LINK	177295		
13	1	LINK	177296		
14	2	LINK	177297		
15	2	LINK	177299		
16	1	SPREADER	177300		
17	2	PIN 1 HOLE W/HD 1.62 DIA X 1.83 LG	177301		
18	2	PIN 1 HOLE W/HD 2.25 DIA X 4.79 LG	177303		
19	2	PIN 2 HOLE 2.50 DIA X 3.22 LG	177397		
20	1	#134 JIB STOP ASSEMBLY	179332		
21	2	PENDANT 30 FT-9.00 (9.37 M)	277430	2	
22	2	PENDANT 44 FT-7.00 (13.59 M)	277432	3	
23	2	BUMPER RUBBER	285220		
24	2	PIN COTTER .31 X 3.00	562130		
25	4	PIN COTTER .38 X 3.00	562150		
26	4	PIN COTTER .38 X 4.00	562152		
27	4	PIN COTTER .38 X 5.00	562154		
28	4	PIN WIRE LOCK .25 DIA X 1.75 LG	563823	6	
29	4	NUT_HEX 0.375-16 ZC	546054		
30	4	SCREW CAP HEX HEAD 0.375-16 X 1.25 G5	612456		
31	4	SCREW CAP HEX HEAD 0.750-10 X 1.50 G5	612715		
32	4	WASHER LOCK .375	710304		
33	4	WASHER LOCK .75	710308		
34					
35					
36	1	STRUT MACHINING	A01797	7	
37	1	TOP JIB 15 FT #134 (4.75 M)	A01810	8	
38	1	GUARD WIRE ROPE 1.50 OD X 21.00 LG	A02066	7	
39	1	GUARD WIRE ROPE 1.63 OD X 14.25 LG	A02370	6	
40					
41	2	PIN FOR PENDANT	564097	15	
42	2	PIN COTTER Ø3/8 X 3.00LG	562151		
43					

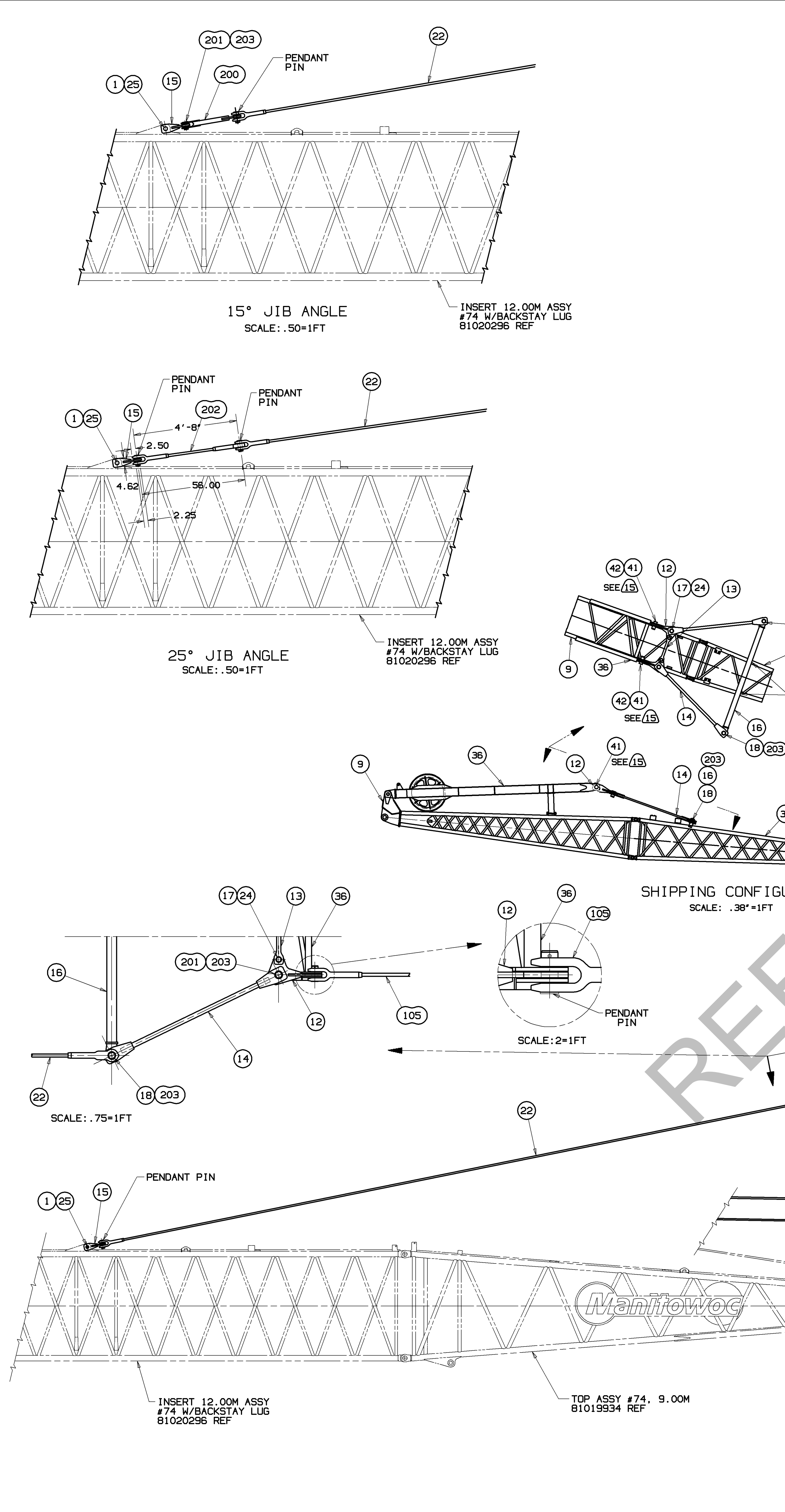
NO. REQD FOR THE FOLLOWING ITEMS ARE IN JIB LENGTH TABLE				
100	INSERT 10 FT #123, TUBULAR JIB	32938	10	
101	PIN 1 HOLE W/HD 1.38 DIA X 2.48 LG	76225		
102	INSERT 20 FT #123, TUBULAR JIB	176938	11	
103	TIMBER 27.00 LG X 3.50 W	81017678	18	
104	HHCS 5/8-11UNC X 5.00 GR 5	612685		
105	PENDANT 9 FT-6.00 (2.89 M)	276729	2	
106	PENDANT 19 FT-0.00 (5.79 M)	277422	2	
107	ELASTIC STOP NUT 0.625-11	548345		
108	PIN COTTER .38 DIA X 6.00	562158		
109	F WASHER SHIM 5/8 ST F436	709747		
110				
111				

NO. REQD FOR THE FOLLOWING ITEMS ARE IN JIB ANGLE TABLE				
200	LINK	177298		
201	PIN 1 HOLE W/HD 2.25 X 3.17 LG	177302		
202	PENDANT 4 FT-8.00 (1.42 M)	277431	2	
203	PIN COTTER .38 X 3.50	562151		
204				
205				

OPTIONAL PARTS				
300	1	HOO & WEIGHT BALL 15 TON (13.6M TON)	218214	
301	1	BLOCK HOOK 30 TON (27.0M TON)	237095	
302	1	SOCKET BUTTON 22-26MM WIRE ROPE	A11040	
303				
304				

REQUIRED TO SHIP SPREADER FRAMEWORK STOWED ON THE JIB				
305				
306				
307				

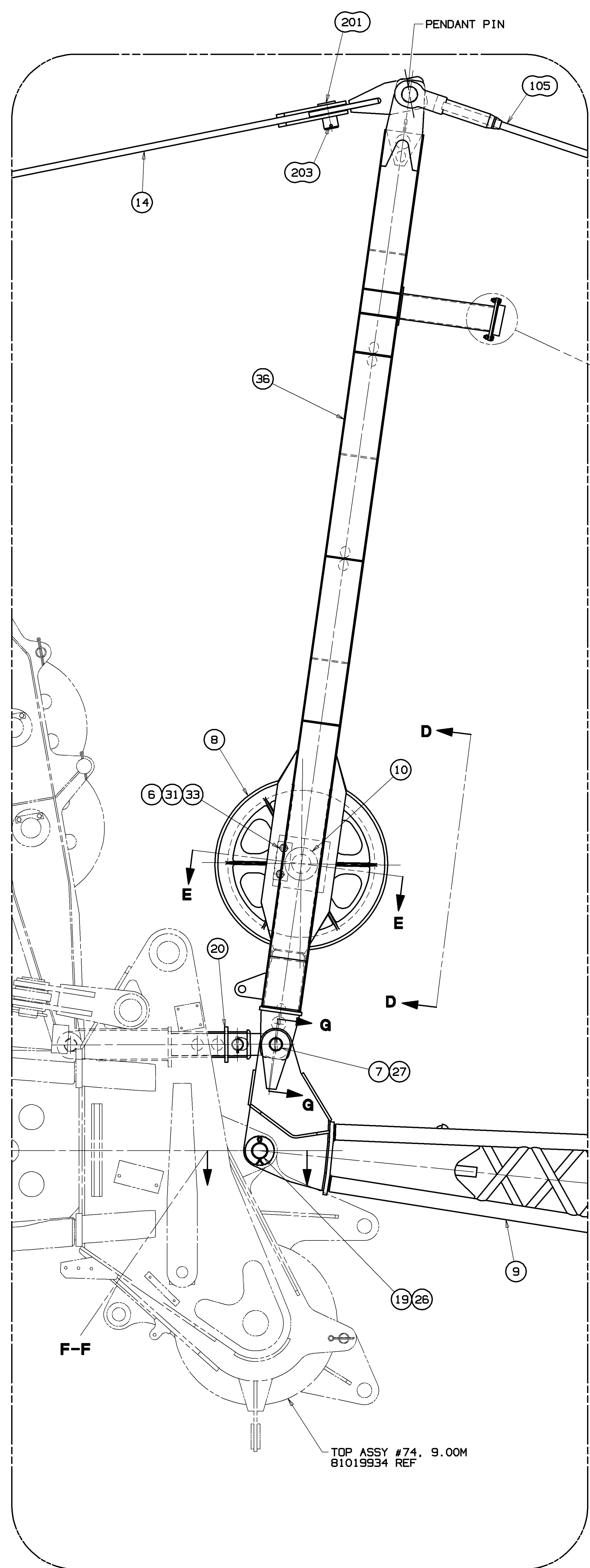
PRIVATE LABELING REQUIREMENT TO CONFORM TO ENGINEERING SPECIFICATION S622103794 FOR COMPONENTS LISTED IN SECTION 05-006  
DATE 11-16-12  
REV. LNK  
FBI



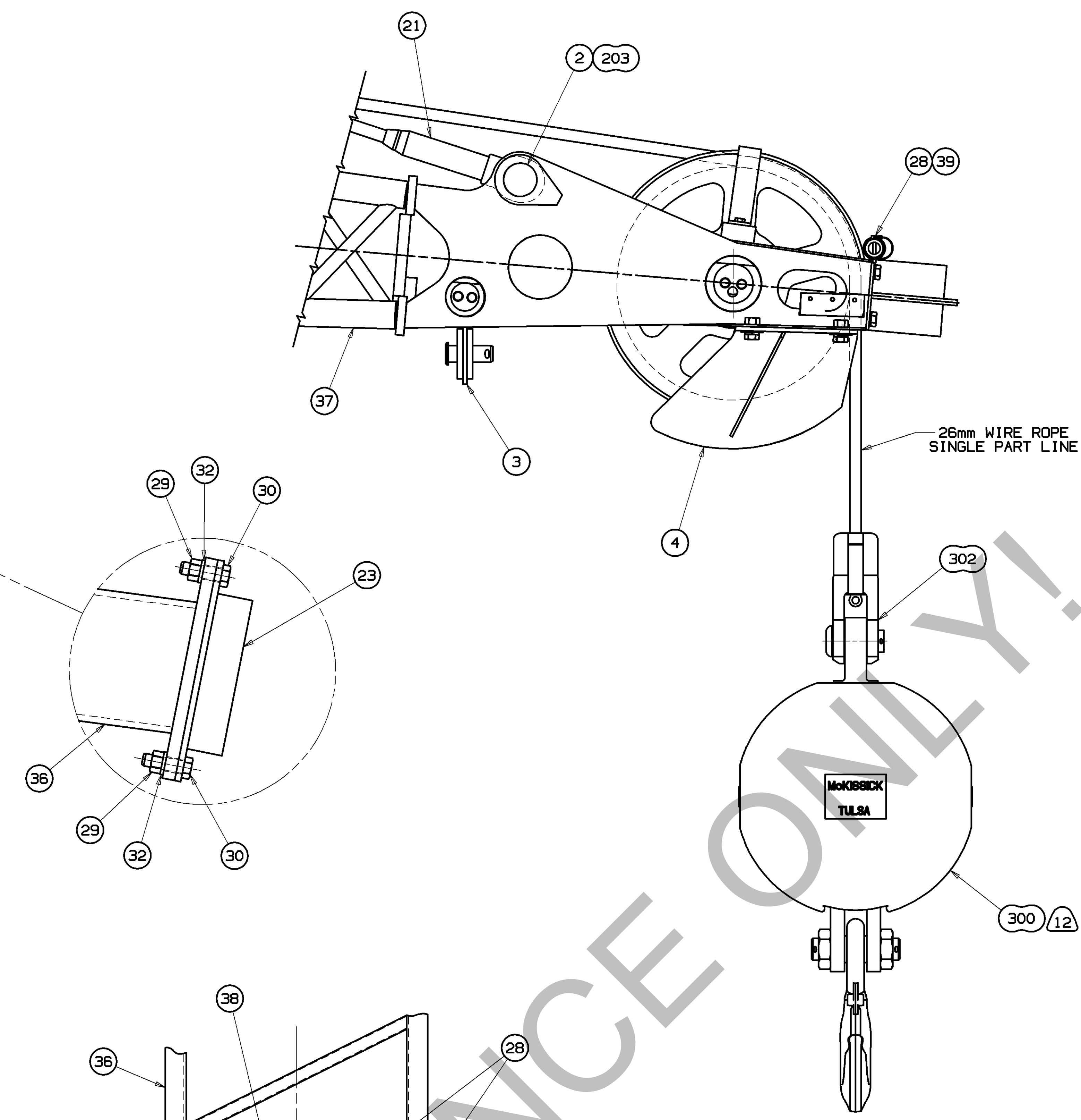
DO NOT SCALE THIS DRAWING

TOLERANCE UNLESS OTHERWISE SPECIFIED		MATERIAL		FINISHING	
DECIMAL PLACES	FRACTIONS	DR. CDC	DR. MER	DR. PMP	DR. JWB
(1) FRACTION 0.00	(1) PLACE 0.00	(2) PLACE 0.00	(3) PLACE 0.000	(4) PLACE 0.000	(5) PLACE 0.000
(2) FRACTION 0.00	(2) PLACE 0.00	(3) PLACE 0.000	(4) PLACE 0.000	(5) PLACE 0.000	(6) PLACE 0.000
(3) FRACTION 0.00	(3) PLACE 0.000	(4) PLACE 0.000	(5) PLACE 0.000	(6) PLACE 0.000	(7) PLACE 0.000

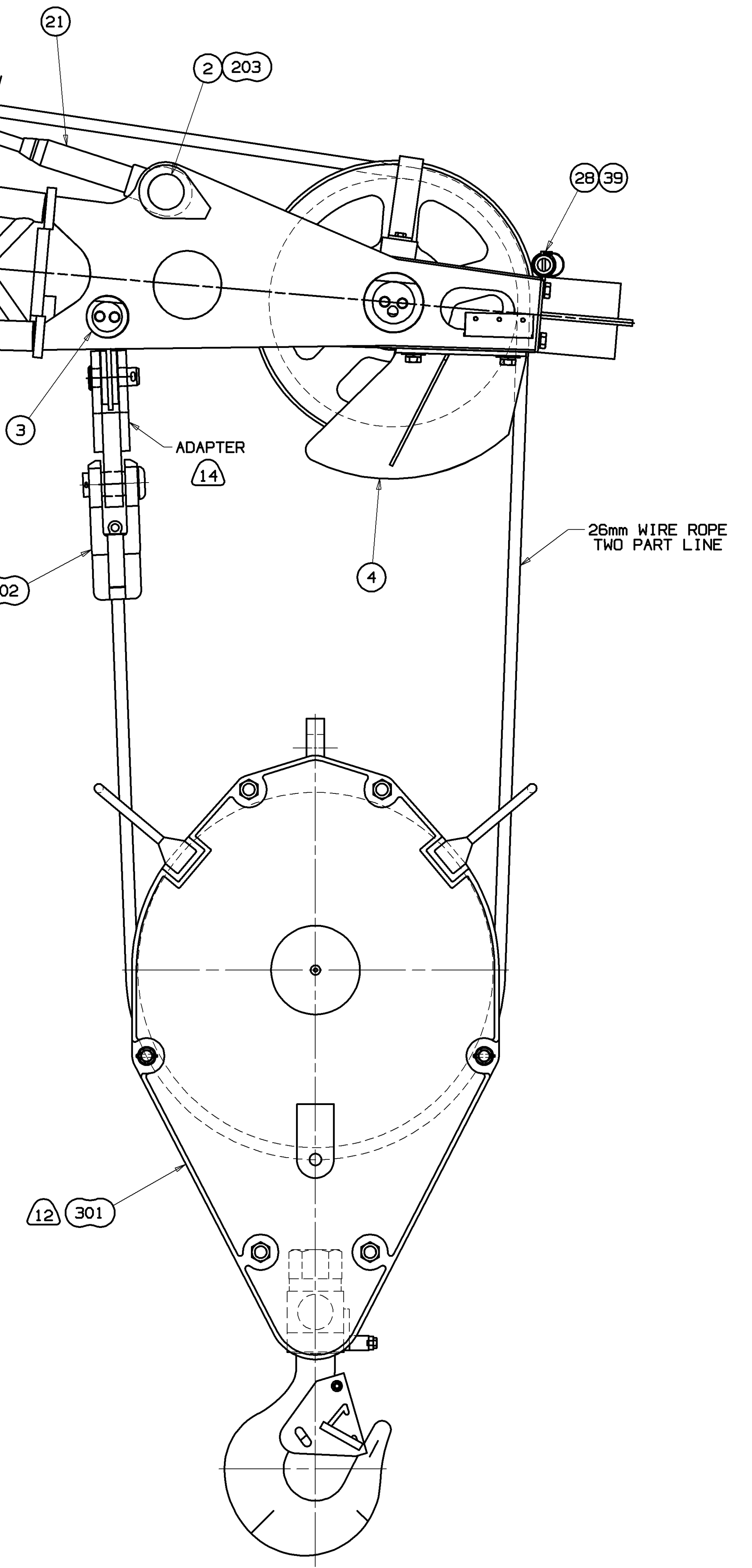




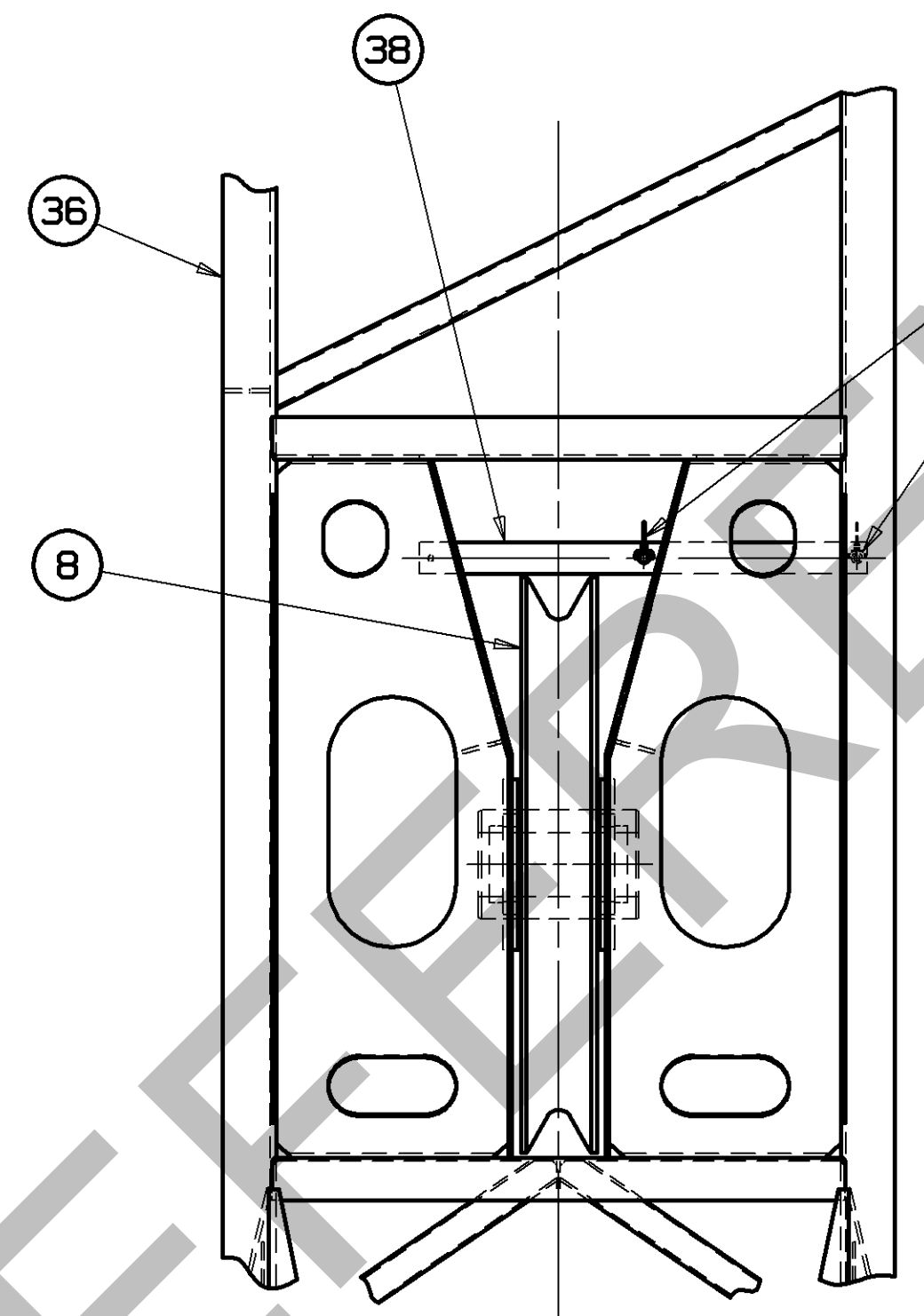
**DETAIL C**  
 SCALE: 1.5=1FT



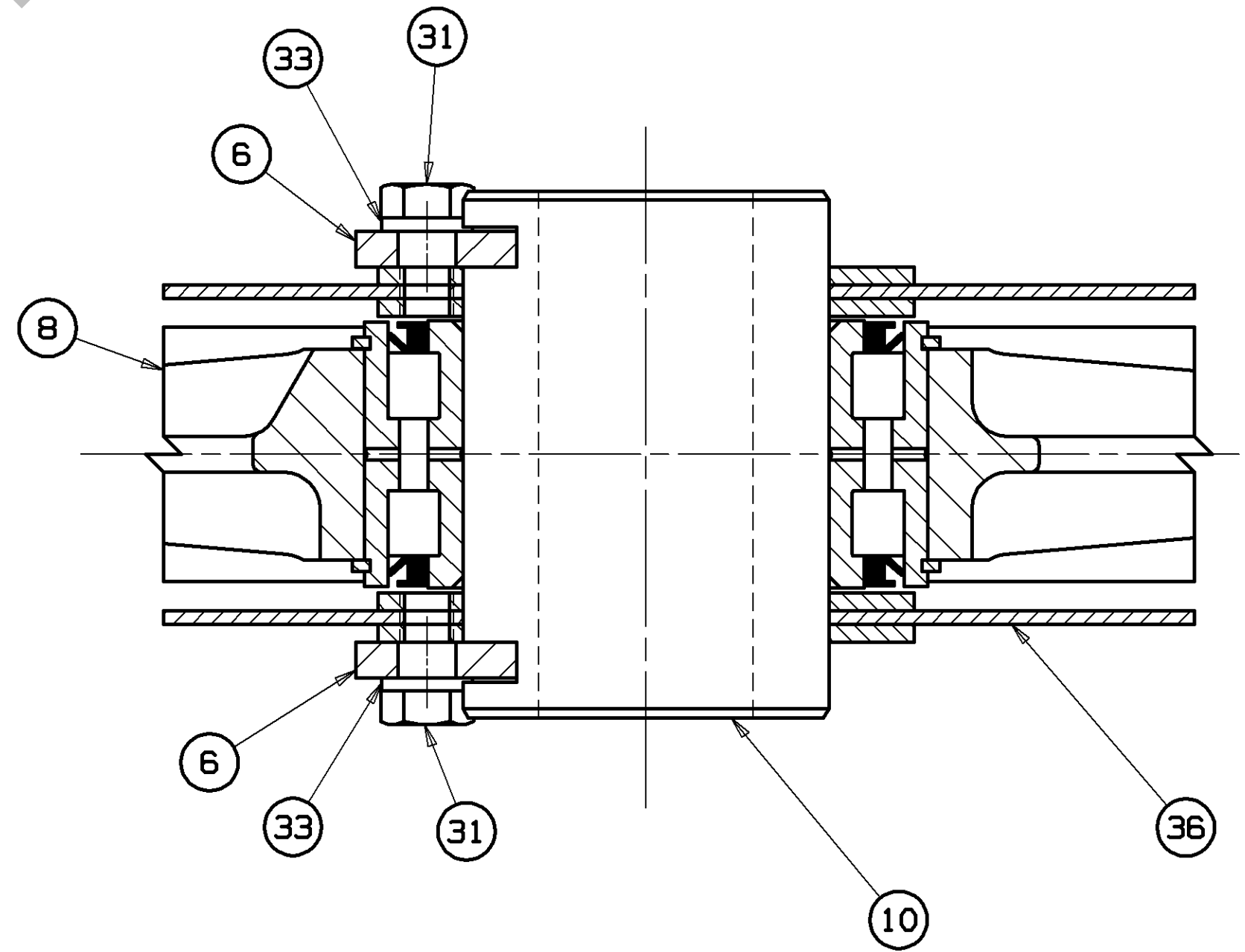
**DETAIL H**  
 SINGLE PART LINE  
 WITH BUTTON SOCKET  
 SCALE: 2=1FT



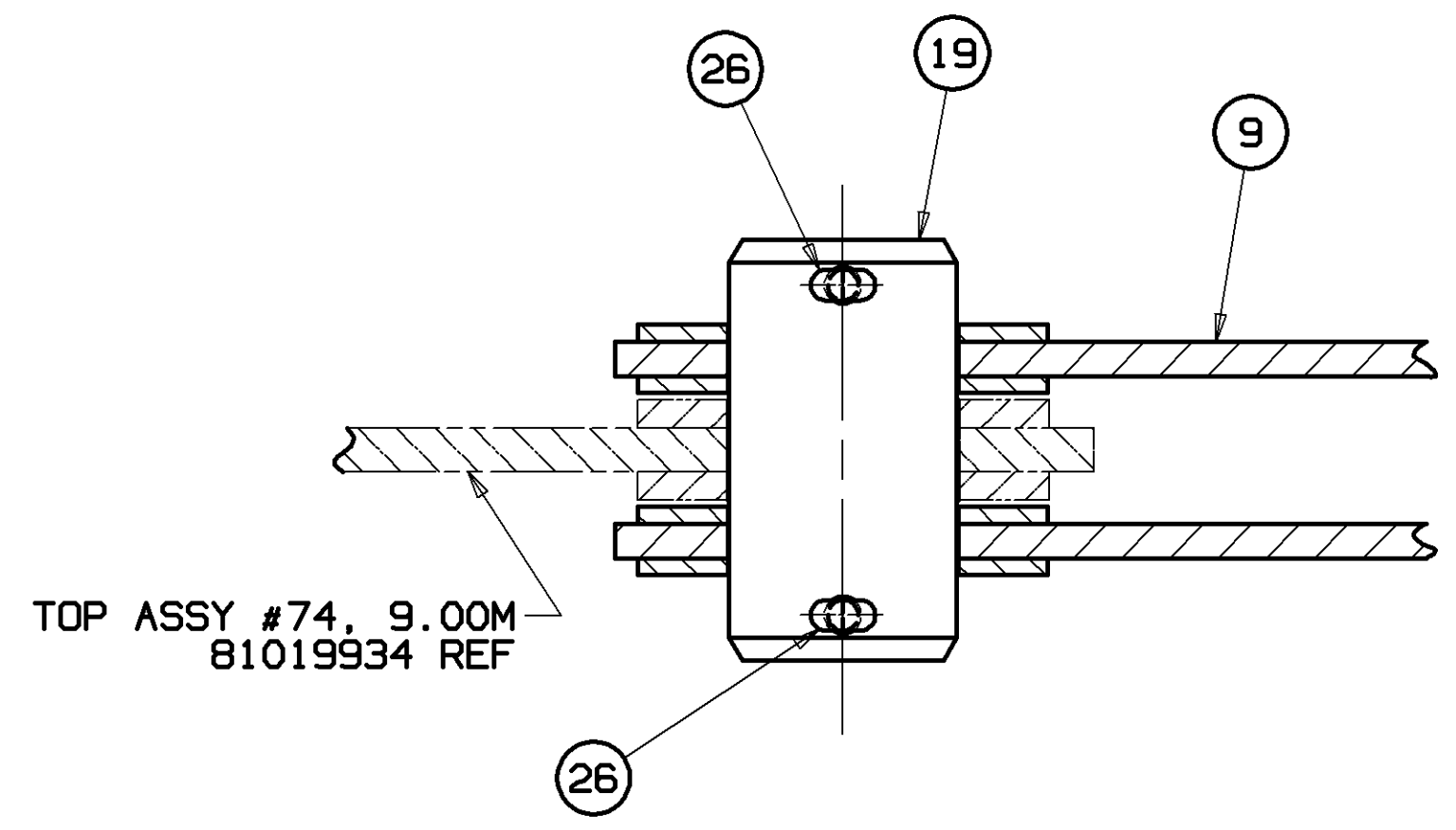
**DETAIL H**  
 TWO PART LINE  
 WITH BUTTON SOCKET  
 SCALE: 2=1FT



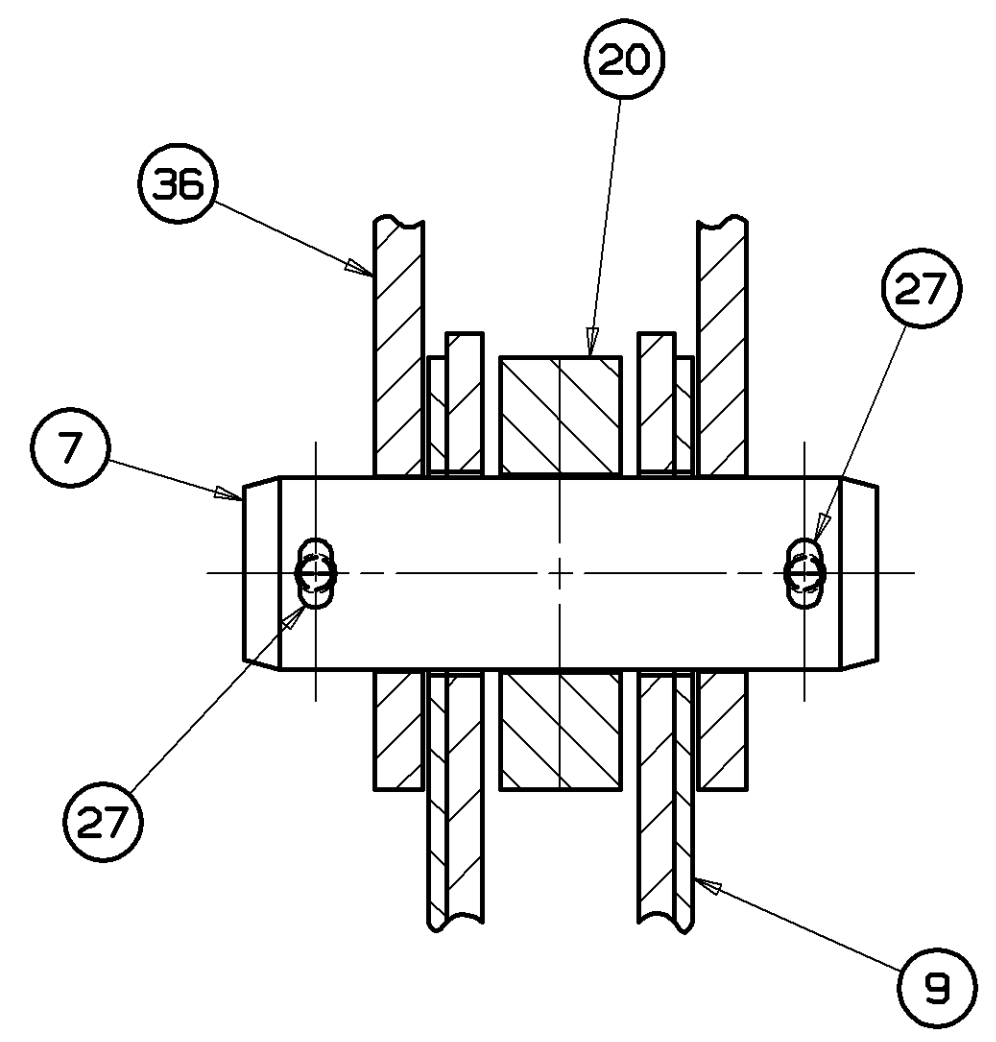
**VIEW D-D**  
 SCALE: 1.5=1FT



**SECTION E-E**  
 SCALE: 6=1FT



**SECTION F-F**  
 SCALE: 6=1FT

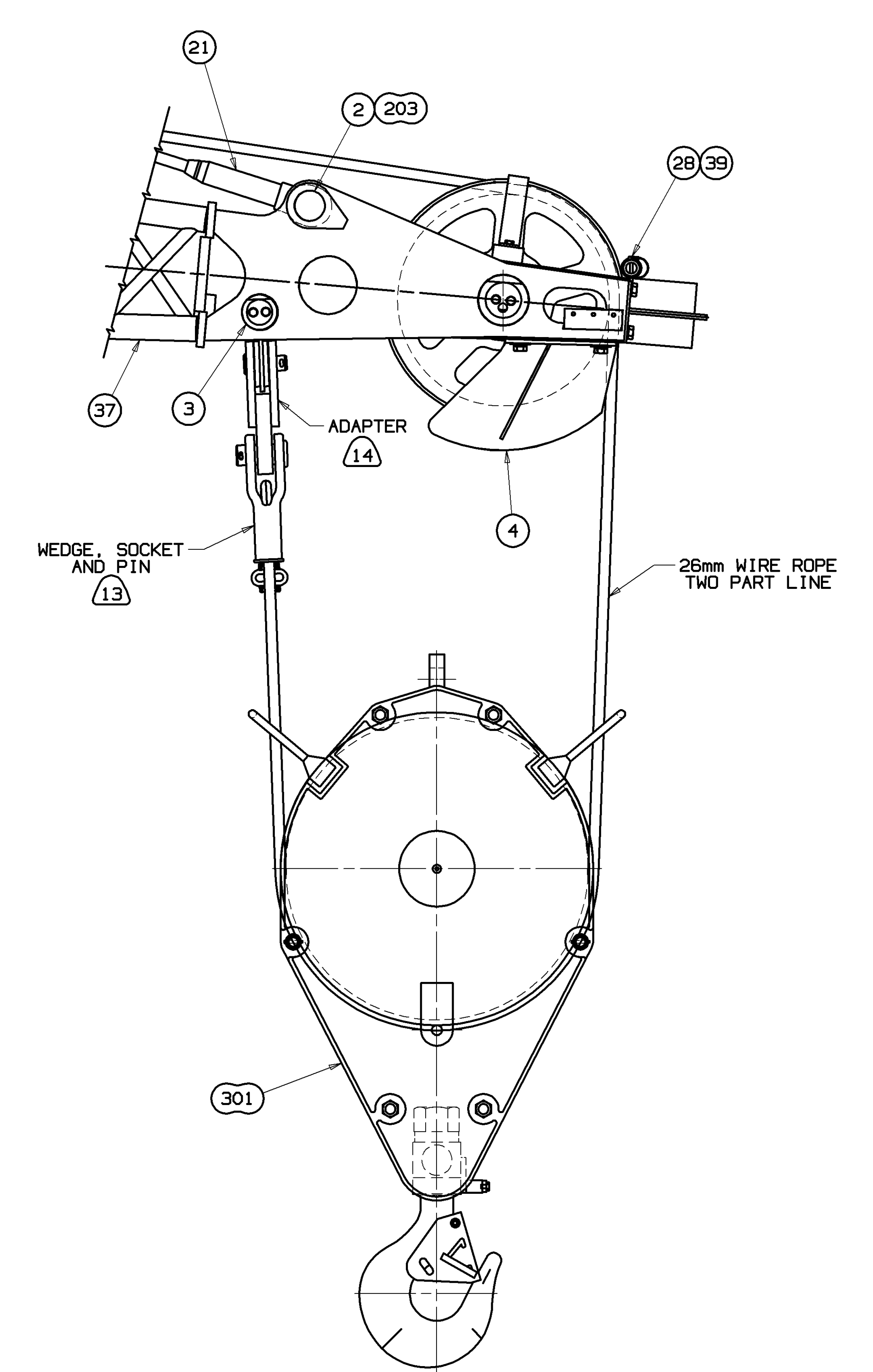
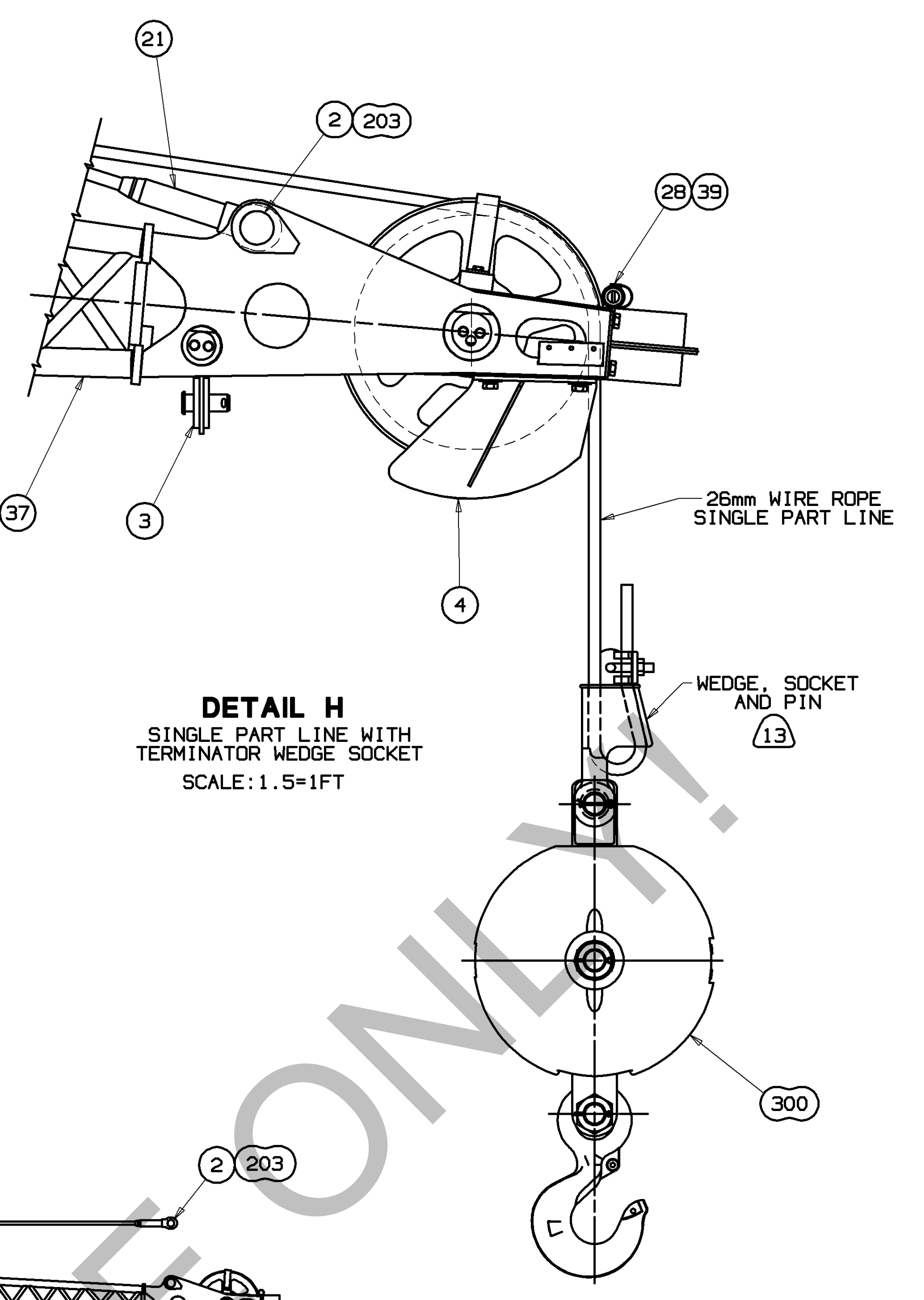
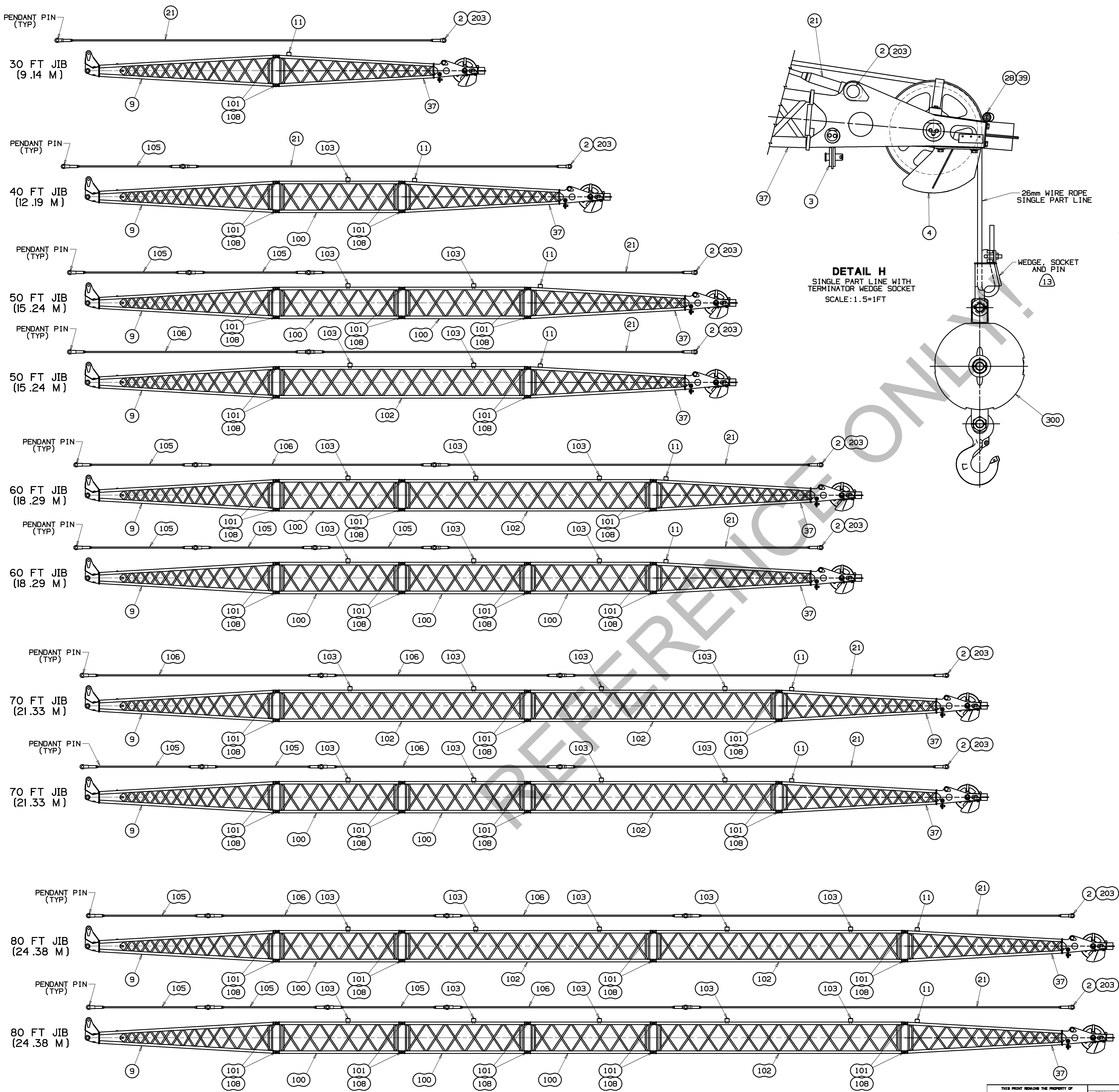


**SECTION G-G**  
 SCALE: 6=1FT

TOP ASSY #74, 9.00M  
 81019934 REF

TOP ASSY #74, 9.00M  
 81019934 REF





TOLERANCE UNLESS OTHERWISE SPECIFIED		SCALE	MATERIAL	QTY	UNIT	NO. 10
DECIMAL PLACES	FABRICATION	1:36=1FT				
(1) PLACE 0.5	±.12	±.18	DR. CDC	Marinette, Wisconsin	JIB #134	DATE
(2) PLACE 0.00	±.06	±.12	DR. MER	MODEL MLC165US	FOR #74 BOOM	11-16-12
(3) PLACE 0.000	±.006	±.012	APP. PMP			REV. LNK
ANGLES	±1° 30'	±0° 30'				FB

81022482  
 SHT 3 OF 3

PRIVATE LABELING REQUIREMENT TO CONFORM TO ENGINEERING SPECIFICATION 8629103794 FOR COMPONENTS LISTED IN SECTION 05-026  
 DATE 11-16-12  
 REV. LNK  
 FB