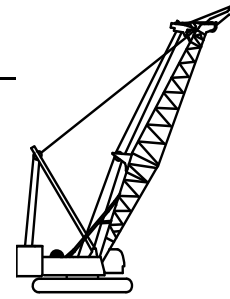


# Liftcrane Boom Capacities

**Boom No. 74**  
**121,500 lb Crane Counterweight**  
**35,300 lb Carbody Counterweight**  
**Crawler Machine on a Barge**  
**0 Degree thru 3 Degree Static Machine List**  
**No Travel - 360 Degree Rating**



## MLC165 SERIES 2



**LIFTING CAPACITIES:** Lifting capacities are for a crawler machine when operating on a barge. Machine shall be positively secured to prevent shifting. Lifting capacities for various boom lengths and operating radii are for freely suspended loads and do not exceed 75% of a static tipping load. Capacities based on structural competence are denoted by an asterisk (\*).

**Boom Backward Stability:** A minimum of 4 parts hoist line is required for capacities denoted by (b), (c), and (d) for boom lengths 49.2 ft thru 98.4 ft. Capacities indicated by (b) require 3,000 lb minimum weight, (c) requires 7,500 lb minimum weight, and (d) requires 15,000 lb minimum weight. **Caution: Do not operate in areas indicated by (b), (c), or (d) without required minimum weights.** Boom will not boom down and boom hoist wire rope may go slack causing wire rope damage or failure.

Upper boom point capacity for liftcrane service with single part whip line is 27,558 lb or 55,116 lb with two part whip line. When boom butt mounted auxiliary drum is used, capacity with single part whip line is 20,000 lb or 40,000 lb with two part whip line. In all cases, upper boom point capacities cannot exceed those listed for main boom capacity.

206.7 ft thru 275.6 ft boom lengths require only the middle three sheaves in lower boom point. All other sheaves must be removed from lower boom point.

Weight of upper boom point, all load blocks, hooks, weight ball, slings, hoist lines, etc., beneath boom point sheaves is considered part of main boom load. Boom is not to be lowered beyond radii where combined weights are greater than rated capacity. Where no capacity is shown, operation is not intended or approved.

**OPERATING CONDITIONS:** Machine to operate on a firm uniformly supporting surface with machine list not to exceed degrees noted. Refer to boom rigging **No. 81019793** or **No. 83004083**, Wire Rope Specification chart **No. 9292-A**, and Wind Conditions chart **No. 9289-A**. Crane operator judgment must be used to allow for dynamic load effects of swinging, hoisting or lowering, wind conditions, as well as adverse operating conditions and physical machine depreciation. Refer to Operator's Manual for operating guidelines.



**OPERATING RADIUS:** Operating radius is horizontal distance from axis of rotation at barge deck to center of vertical hoist line or load block.

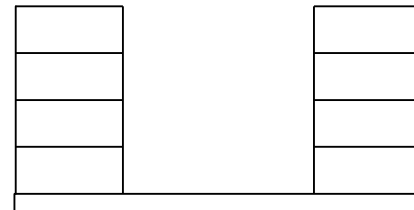


**BOOM ANGLE:** Boom angle in degrees (°) is angle between horizontal and centerline of boom butt and inserts, and is an indication of operating radius. In all cases, operating radius shall govern capacity.



**BOOM POINT ELEVATION:** Boom point elevation is vertical distance from barge deck to centerline of boom point shaft.

**MACHINE EQUIPMENT:** Machine equipped with 26 ft 2 in. crawlers, 43 in. treads, 23 ft 7 in. live mast, 18 part boom hoist reeving, four 28 mm boom pendants, 121,500 lb crane counterweight, and two 17,650 lb carbody counterweights.



121,500 lb Crane Counterweight  
8 Side Boxes

**WARNING:** Free fall operation is limited to 13,000 lb per part of line when lowering load with free fall clutch/brake pedal. Hydraulic power must be used for full line pull.

### Upper Boom Point Deduct

Deduct 1,300 lb from capacities when upper boom point, and adapter frame if equipped, is attached.

### Auxiliary Drum Deduct

Deduct 1,800 lb from capacities when boom butt is equipped with auxiliary drum.

### Lower Boom Point Sheave Deduct

Deduct 700 lb from capacities for boom lengths 147.6 ft thru 196.9 ft when lower boom point is equipped with outer sheave clusters.

### Third Line Deduct

Deduct 400 lb from capacities when boom is equipped for three line operation.

### Maximum Boom Lengths Lifted Unassisted

List	Over Front of Blocked Crawlers	Over Rear of Blocked Crawlers	Over Side of Crawlers
	Boom Length	Boom Length	Boom Length
0 Degree	(a) 275.6 ft	(a)(b) 275.6 ft	(a)(b) 255.9 ft
1 Degree	265.7 ft	265.7 ft	236.2 ft
2 Degree	265.7 ft	255.9 ft	236.2 ft
3 Degree	265.7 ft	255.9 ft	236.2 ft

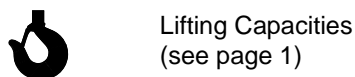
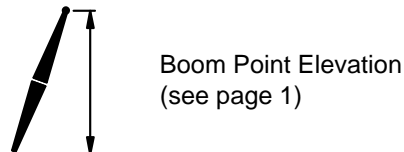
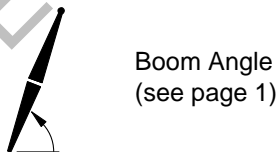
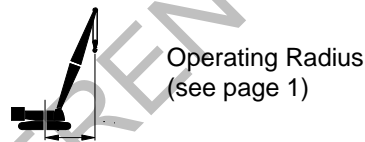
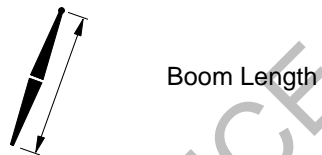
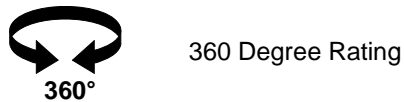
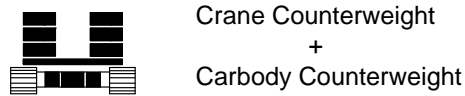
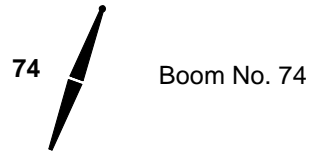
Load block, hook and weight ball on barge deck until combined weights are within rated capacity of chart.

(a) Upper boom point, and adapter frame if equipped, must be removed.

(b) Auxiliary drum in boom butt must be removed.

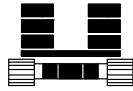
Jib cannot be attached on crawler machine while operating on a barge.

## Explanation of Symbols



REFERENCE ONLY!

# MLC165 S-2

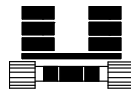


121,500 lb  
+  
35,300 lb



 49.2 ft							
ft	°	ft	lb	lb	lb	lb	ft
14	81.7	55.2	363,800 *d				14
15	80.5	55.0	363,800 *d	329,500 *d			15
16	79.3	54.8	342,100 *d	308,500 *d	229,400 *d		16
17	78.1	54.5	322,600 *d	290,100 *d	229,300 *d	174,200 *d	17
18	76.9	54.3	305,100 *d	273,700 *d	221,600 *d	174,200 *d	18
19	75.7	54.0	289,400 *d	259,000 *d	209,600 *d	174,200 *d	19
20	74.5	53.7	275,200 *d	245,800 *d	198,800 *d	174,100 *d	20
22	72.0	53.0	250,500 *c	223,000 *c	180,000 *c	157,800 *c	22
24	69.5	52.2	229,700 *c	203,900 *c	164,400 *c	144,000 *c	24
26	66.9	51.2	212,000 *b	187,800 *b	151,200 *b	132,300 *b	26
28	64.3	50.2	189,100	174,000 *	139,900 *	122,200 *	28
30	61.7	49.1	170,000	161,800	130,000 *	113,500 *	30
32	58.9	47.8	154,300	147,500	121,400 *	105,800 *	32
34	56.1	46.4	141,000	135,400	113,800 *	99,100 *	34
36	53.1	44.8	129,800	125,000	107,000 *	93,000 *	36
38	50.0	43.1	120,100	116,000	101,000 *	87,700 *	38
40	46.8	41.2	111,600	108,100	95,500 *	82,800 *	40
42	43.3	39.0	104,200	101,200	90,500 *	78,400 *	42
44	39.6	36.5	97,600	95,000	86,000 *	74,300 *	44
46	35.6	33.6	91,700	89,400	81,900 *	70,700 *	46
48	31.0	30.3	86,300	84,400	78,000 *	67,200 *	48
50	25.6	26.1	81,500	79,900	74,500 *	64,100 *	50

# MLC165 S-2

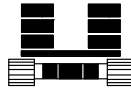


121,500 lb  
+  
35,300 lb



 59.1 ft							
ft	°	ft	0° lb	1° lb	2° lb	3° lb	ft
16	81.1	64.8	337,800 *d				16
17	80.1	64.6	322,500 *d	260,700 *d			17
18	79.1	64.4	305,000 *c	260,700 *c	177,300 *c		18
19	78.1	64.2	289,300 *c	259,000 *c	177,300 *c	133,500 *c	19
20	77.1	63.9	275,100 *c	245,800 *c	177,300 *c	133,500 *c	20
22	75.1	63.3	250,400 *c	223,000 *c	177,300 *c	133,500 *c	22
24	73.1	62.7	229,700 *c	203,900 *c	164,400 *c	133,500 *c	24
26	71.0	62.0	212,000 *b	187,800 *b	151,200 *b	132,300 *b	26
28	68.9	61.1	189,600	174,000 *	139,900 *	122,200 *	28
30	66.8	60.2	170,500	160,800	130,100 *	113,500 *	30
32	64.6	59.2	154,800	146,600	121,500 *	105,900 *	32
34	62.4	58.1	141,500	134,700	113,900 *	99,100 *	34
36	60.2	56.9	130,300	124,400	107,100 *	93,100 *	36
38	57.8	55.6	120,600	115,500	101,100 *	87,800 *	38
40	55.5	54.2	112,100	107,700	95,600 *	82,900 *	40
42	53.0	52.7	104,700	100,900	90,700 *	78,500 *	42
44	50.4	50.9	98,100	94,800	86,200 *	74,500 *	44
46	47.8	49.1	92,200	89,300	82,100 *	70,900 *	46
48	45.0	47.0	86,900	84,300	78,300 *	67,500 *	48
50	42.1	44.8	82,200	79,900	74,800 *	64,400 *	50
55	33.8	37.8	72,000	70,300	67,200 *	57,600 *	55
60	22.7	27.6	63,800	62,600	60,700 *	51,900 *	60

# MLC165 S-2

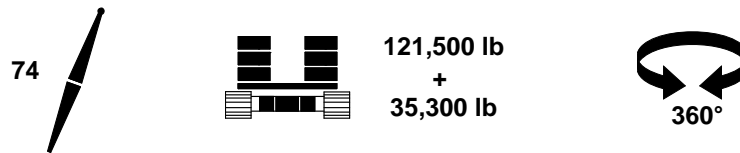


121,500 lb  
+  
35,300 lb



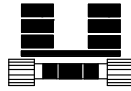
ft	°	ft	0° lb	1° lb	2° lb	3° lb	ft
17	81.6	74.7	315,200 *d				17
18	80.7	74.5	304,400 *c				18
19	79.9	74.3	288,700 *c	246,700 *c			19
20	79.0	74.1	274,600 *c	245,500 *c	169,200 *c		20
22	77.3	73.6	249,900 *c	222,700 *c	169,200 *c	127,700 *c	22
24	75.6	73.0	229,100 *c	203,600 *c	164,000 *c	127,700 *c	24
26	73.8	72.4	211,400 *b	187,500 *b	150,800 *b	127,700 *b	26
28	72.1	71.7	189,600	173,700 *	139,500 *	121,800 *	28
30	70.3	70.9	170,500	159,300	129,700 *	113,100 *	30
32	68.5	70.1	154,700	145,400	121,100 *	105,400 *	32
34	66.7	69.2	141,500	133,500	113,500 *	98,700 *	34
36	64.8	68.2	130,200	123,400	106,800 *	92,700 *	36
38	62.9	67.2	120,500	114,600	100,700 *	87,400 *	38
40	61.0	66.0	112,000	106,900	95,300 *	82,600 *	40
42	59.1	64.8	104,600	100,100	90,400 *	78,200 *	42
44	57.1	63.5	98,000	94,000	85,900 *	74,200 *	44
46	55.0	62.0	92,200	88,600	81,800 *	70,600 *	46
48	52.9	60.5	86,900	83,700	78,000 *	67,200 *	48
50	50.7	58.8	82,100	79,300	74,600 *	64,200 *	50
55	45.0	53.9	72,000	69,900	67,000 *	57,400 *	55
60	38.5	47.9	63,900	62,200	60,600	51,800 *	60
65	30.8	40.2	57,200	55,900	54,700	47,000 *	65
70	20.4	28.8	51,400	50,500	49,600	42,800 *	70

# MLC165 S-2



 78.7 ft							
ft	°	ft	0° lb	1° lb	2° lb	3° lb	ft
19	81.1	84.3	288,400 *c				19
20	80.4	84.1	274,200 *c	242,400 *c			20
22	78.9	83.7	249,500 *c	222,500 *c	167,300 *c		22
24	77.4	83.2	228,800 *c	203,500 *c	163,800 *c	126,400 *c	24
26	75.9	82.7	211,100 *b	187,400 *b	150,600 *b	126,400 *b	26
28	74.4	82.1	189,800 *b	173,600 *b	139,300 *b	121,500 *b	28
30	72.9	81.4	170,600	158,000	129,500 *	112,800 *	30
32	71.3	80.7	154,800	144,200	120,900 *	105,200 *	32
34	69.8	79.9	141,500	132,600	113,300 *	98,500 *	34
36	68.2	79.1	130,200	122,500	106,600 *	92,500 *	36
38	66.6	78.2	120,500	113,800	100,500 *	87,200 *	38
40	65.0	77.2	112,100	106,200	95,100 *	82,300 *	40
42	63.3	76.2	104,600	99,500	90,200 *	78,000 *	42
44	61.7	75.1	98,000	93,500	85,700 *	74,000 *	44
46	60.0	73.9	92,200	88,100	81,600 *	70,400 *	46
48	58.3	72.6	86,900	83,300	77,900 *	67,000 *	48
50	56.5	71.3	82,200	78,900	74,400 *	64,000 *	50
55	51.9	67.4	72,100	69,500	66,900 *	57,300 *	55
60	47.0	62.9	64,000	61,900	60,000	51,700 *	60
65	41.6	57.5	57,300	55,700	54,100	46,900 *	65
70	35.6	50.8	51,700	50,400	49,100	42,800 *	70
75	28.4	42.3	46,900	45,800	44,900	39,200 *	75
80	18.6	29.8	42,600	41,900	41,200	36,000 *	80

# MLC165 S-2



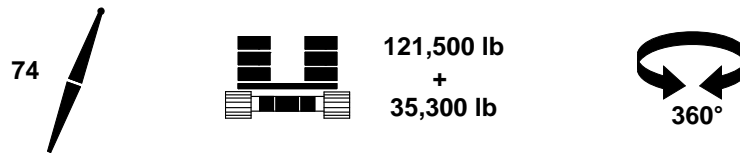
121,500 lb  
+  
35,300 lb



ft	°	ft	0° lb	1° lb	2° lb	3° lb	ft
20	81.5	94.1	272,700 *c				20
22	80.2	93.7	249,400 *b	218,900 *b			22
24	78.8	93.3	228,600 *b	203,400 *b	158,200 *b		24
26	77.5	92.8	210,900 *b	187,300 *b	150,500 *b	121,100 *b	26
28	76.2	92.3	189,900 b	173,000 b	139,200 *b	121,000 *b	28
30	74.8	91.8	170,700	156,700	129,400 *	112,700 *	30
32	73.5	91.1	154,900	143,200	120,800 *	105,100 *	32
34	72.1	90.4	141,600	131,600	113,200 *	98,400 *	34
36	70.7	89.7	130,300	121,700	106,500 *	92,400 *	36
38	69.4	88.9	120,600	113,100	100,400 *	87,100 *	38
40	67.9	88.1	112,100	105,600	95,000 *	82,200 *	40
42	66.5	87.2	104,700	98,900	90,100 *	77,900 *	42
44	65.1	86.2	98,100	93,000	85,600 *	73,900 *	44
46	63.6	85.2	92,200	87,700	81,500 *	70,300 *	46
48	62.2	84.1	87,000	82,900	77,800 *	67,000 *	48
50	60.7	83.0	82,200	78,500	74,400 *	63,900 *	50
55	56.8	79.8	72,200	69,200	66,500	57,200 *	55
60	52.8	76.1	64,100	61,700	59,500	51,700 *	60
65	48.5	71.7	57,400	55,500	53,700	46,900 *	65
70	43.9	66.7	51,800	50,200	48,700	42,800 *	70
75	38.9	60.7	47,000	45,800	44,500	39,300 *	75
80	33.2	53.5	42,900	41,900	40,900	36,200 *	80
85	26.4	44.2	39,300	38,500	37,700	33,400 *	85
90	17.1	30.7	36,100	35,500	34,900	30,800 *	90

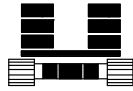


# MLC165 S-2



 98.4 ft							
ft	°	ft	0° lb	1° lb	2° lb	3° lb	ft
22	81.2	103.8	248,900 *b				22
24	80.0	103.4	228,200 *b	203,200 *b			24
26	78.8	102.9	210,600 *b	187,100 *b	150,200 *b		26
28	77.6	102.5	189,900 b	171,300 b	138,900 *b	117,500 *b	28
30	76.4	102.0	170,700	155,400	129,100 *	112,400 *	30
32	75.2	101.4	154,800	142,000	120,500 *	104,800 *	32
34	74.0	100.8	141,500	130,600	112,900 *	98,000 *	34
36	72.7	100.2	130,200	120,800	106,200 *	92,100 *	36
38	71.5	99.5	120,500	112,300	100,100 *	86,700 *	38
40	70.3	98.7	112,000	104,800	94,700 *	81,900 *	40
42	69.0	97.9	104,600	98,200	89,800 *	77,600 *	42
44	67.8	97.1	98,000	92,300	85,300 *	73,600 *	44
46	66.5	96.2	92,100	87,000	81,300 *	70,000 *	46
48	65.2	95.2	86,800	82,200	77,500 *	66,700 *	48
50	63.9	94.2	82,100	77,900	74,100 *	63,600 *	50
55	60.6	91.4	72,000	68,700	65,700	56,900 *	55
60	57.1	88.3	63,900	61,200	58,800	51,400 *	60
65	53.5	84.6	57,200	55,100	53,000	46,600 *	65
70	49.7	80.5	51,700	49,900	48,200	42,600 *	70
75	45.7	75.7	46,900	45,400	44,000	39,100 *	75
80	41.4	70.2	42,800	41,600	40,400	36,000 *	80
85	36.6	63.7	39,300	38,200	37,200	33,200 *	85
90	31.2	55.9	36,100	35,200	34,400	30,700 *	90
95	24.7	46.0	33,300	32,600	31,900	28,500 *	95
100	15.7	31.4	30,700	30,200	29,700	26,400 *	100

# MLC165 S-2

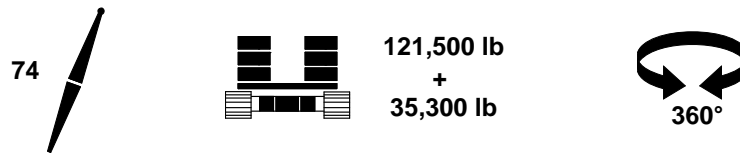


121,500 lb  
+  
35,300 lb



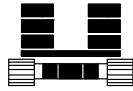
 108.3 ft							
ft	°	ft	0° lb	1° lb	2° lb	3° lb	ft
24	80.9	113.4	227,500 *b				24
26	79.8	113.0	210,400 *b	180,000 *b			26
28	78.7	112.6	189,900	169,800	138,800 *		28
30	77.7	112.1	170,700	154,100	129,000 *	112,200 *	30
32	76.6	111.6	154,800	140,900	120,400 *	104,600 *	32
34	75.5	111.1	141,500	129,600	112,800 *	97,900 *	34
36	74.4	110.5	130,200	120,000	106,100 *	92,000 *	36
38	73.3	109.9	120,500	111,500	100,100 *	86,600 *	38
40	72.1	109.2	112,000	104,100	94,600 *	81,800 *	40
42	71.0	108.5	104,600	97,600	89,700 *	77,500 *	42
44	69.9	107.7	98,000	91,800	85,300 *	73,500 *	44
46	68.7	106.9	92,100	86,500	81,200 *	69,900 *	46
48	67.6	106.1	86,800	81,800	77,300	66,600 *	48
50	66.4	105.2	82,100	77,500	73,400	63,500 *	50
55	63.5	102.7	72,000	68,400	65,100	56,900 *	55
60	60.5	99.9	63,900	61,000	58,300	51,300 *	60
65	57.3	96.8	57,300	54,900	52,600	46,600 *	65
70	54.1	93.2	51,700	49,700	47,800	42,600 *	70
75	50.7	89.2	47,000	45,300	43,700	39,100 *	75
80	47.1	84.6	42,900	41,500	40,100	36,000 *	80
85	43.3	79.4	39,300	38,100	37,000	33,200 *	85
90	39.2	73.5	36,200	35,200	34,200	30,800 *	90
95	34.7	66.6	33,500	32,600	31,700	28,600 *	95
100	29.5	58.2	31,000	30,200	29,500	26,600 *	100
105	23.3	47.6	28,700	28,100	27,500	24,800 *	105

# MLC165 S-2



 118.1 ft							
ft	°	ft	0° lb	1° lb	2° lb	3° lb	ft
24	81.7	123.4	213,200 *b				24
26	80.7	123.0	207,100 *b	166,900 *b			26
28	79.7	122.6	189,900	162,900 *	137,700 *		28
30	78.7	122.2	170,600	152,700	128,600 *		30
32	77.7	121.8	154,700	139,700	120,100 *	104,300 *	32
34	76.7	121.3	141,400	128,600	112,500 *	97,600 *	34
36	75.7	120.7	130,100	119,000	105,800 *	91,600 *	36
38	74.7	120.2	120,300	110,700	99,800 *	86,300 *	38
40	73.7	119.6	111,800	103,300	94,300 *	81,500 *	40
42	72.7	118.9	104,400	96,900	89,400 *	77,100 *	42
44	71.6	118.2	97,800	91,100	85,000 *	73,200 *	44
46	70.6	117.5	91,900	85,900	80,500	69,500 *	46
48	69.6	116.7	86,600	81,200	76,300	66,200 *	48
50	68.5	115.9	81,900	76,900	72,500	63,200 *	50
55	65.9	113.7	71,800	67,900	64,200	56,500 *	55
60	63.2	111.2	63,700	60,500	57,500	51,000 *	60
65	60.4	108.4	57,000	54,400	51,900	46,300 *	65
70	57.5	105.3	51,500	49,200	47,200	42,200 *	70
75	54.5	101.8	46,700	44,900	43,100	38,700 *	75
80	51.5	97.8	42,700	41,100	39,500	35,700 *	80
85	48.2	93.4	39,100	37,800	36,400	32,900 *	85
90	44.8	88.5	36,000	34,800	33,700	30,500 *	90
95	41.2	83.0	33,300	32,200	31,300	28,300 *	95
100	37.3	76.6	30,800	29,900	29,100	26,400 *	100
105	32.9	69.2	28,600	27,800	27,100	24,600 *	105
110	28.0	60.3	26,600	25,900	25,300	22,900 *	110
115	22.0	49.0	24,700	24,200	23,700	21,400 *	115

# MLC165 S-2

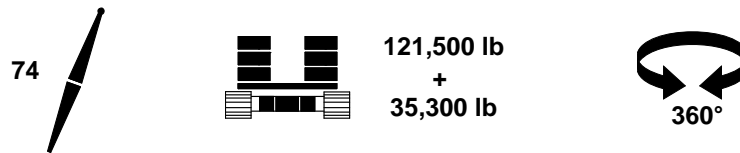



121,500 lb  
+  
35,300 lb



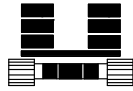
ft	°	ft	0° lb	1° lb	2° lb	3° lb	ft
26	81.4	133.0	195,000*				26
28	80.5	132.7	189,800	151,800*			28
30	79.6	132.3	170,500	148,400*	124,700*		30
32	78.7	131.9	154,600	138,500	119,800*	104,000*	32
34	77.8	131.4	141,300	127,500	112,300*	97,300*	34
36	76.8	130.9	129,900	118,100	105,500*	91,400*	36
38	75.9	130.4	120,200	109,800	99,500*	86,000*	38
40	75.0	129.8	111,700	102,600	94,100*	81,200*	40
42	74.0	129.2	104,200	96,100	89,000	76,900*	42
44	73.1	128.6	97,600	90,400	84,000	72,900*	44
46	72.2	127.9	91,700	85,300	79,500	69,300*	46
48	71.2	127.2	86,500	80,600	75,400	66,000*	48
50	70.3	126.5	81,700	76,400	71,600	62,900*	50
55	67.8	124.5	71,600	67,400	63,500	56,300*	55
60	65.4	122.2	63,500	60,100	56,900	50,700*	60
65	62.9	119.7	56,800	54,000	51,300	46,000*	65
70	60.3	116.9	51,300	48,900	46,600	42,000*	70
75	57.7	113.8	46,600	44,500	42,600	38,500*	75
80	54.9	110.3	42,500	40,700	39,100	35,400*	80
85	52.1	106.4	39,000	37,400	36,000	32,700*	85
90	49.2	102.2	35,900	34,500	33,300	30,300*	90
95	46.1	97.5	33,100	32,000	30,900	28,100*	95
100	42.8	92.2	30,700	29,700	28,700	26,200*	100
105	39.4	86.3	28,400	27,600	26,700	24,400*	105
110	35.6	79.5	26,500	25,700	25,000	22,800*	110
115	31.4	71.7	24,600	24,000	23,300	21,300*	115
120	26.7	62.3	23,000	22,400	21,900	19,900*	120
125	20.9	50.4	21,400	21,000	20,500	18,600*	125

# MLC165 S-2



 137.8 ft							
ft	°	ft	0° lb	1° lb	2° lb	3° lb	ft
28	81.2	142.7	181,100 *				28
30	80.3	142.3	170,400	141,700 *			30
32	79.5	141.9	154,500	137,300	116,900 *		32
34	78.6	141.5	141,100	126,400	111,900 *	96,900 *	34
36	77.8	141.0	129,800	117,100	105,200 *	91,000 *	36
38	76.9	140.6	120,000	108,900	99,200 *	85,600 *	38
40	76.1	140.1	111,500	101,700	93,300	80,800 *	40
42	75.2	139.5	104,000	95,400	87,800	76,500 *	42
44	74.3	138.9	97,400	89,700	82,900	72,500 *	44
46	73.5	138.3	91,500	84,600	78,400	68,900 *	46
48	72.6	137.7	86,200	80,000	74,400	65,600 *	48
50	71.7	137.0	81,400	75,800	70,700	62,600 *	50
55	69.5	135.1	71,300	66,800	62,700	55,900 *	55
60	67.3	133.1	63,200	59,500	56,100	50,400 *	60
65	65.0	130.7	56,600	53,500	50,600	45,700 *	65
70	62.6	128.2	51,000	48,400	46,000	41,600 *	70
75	60.2	125.3	46,300	44,100	42,000	38,100 *	75
80	57.8	122.2	42,200	40,300	38,500	35,100 *	80
85	55.3	118.8	38,700	37,000	35,500	32,400 *	85
90	52.7	115.1	35,600	34,100	32,800	29,900 *	90
95	50.0	110.9	32,800	31,600	30,400	27,800 *	95
100	47.2	106.3	30,400	29,300	28,200	25,800 *	100
105	44.2	101.3	28,200	27,200	26,300	24,100 *	105
110	41.1	95.7	26,200	25,300	24,500	22,500 *	110
115	37.7	89.4	24,400	23,600	22,900	21,000 *	115
120	34.1	82.3	22,700	22,100	21,400	19,600 *	120
125	30.1	74.0	21,200	20,600	20,100	18,300 *	125
130	25.5	64.1	19,800	19,300	18,800	17,200 *	130
135	19.9	51.6	18,500	18,100	17,700	16,100 *	135

# MLC165 S-2

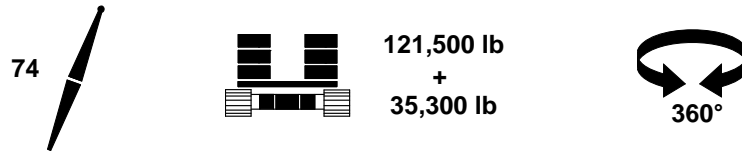



121,500 lb  
+  
35,300 lb



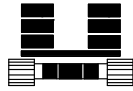
 147.6 ft							
ft	°	ft	0° lb	1° lb	2° lb	3° lb	ft
30	81.0	152.3	165,200*				30
32	80.2	151.9	154,700	128,100*			32
34	79.4	151.6	141,400	125,600*	105,000*		34
36	78.6	151.1	130,000	116,600	103,300*	88,900*	36
38	77.8	150.7	120,200	108,500	98,600	85,900*	38
40	77.0	150.2	111,700	101,400	92,600	81,100*	40
42	76.2	149.7	104,300	95,100	87,200	76,700*	42
44	75.4	149.2	97,700	89,500	82,300	72,800*	44
46	74.6	148.6	91,800	84,400	78,000	69,200*	46
48	73.8	148.0	86,500	79,800	74,000	65,800*	48
50	73.0	147.4	81,700	75,700	70,300	62,800*	50
55	70.9	145.6	71,600	66,800	62,400	56,200*	55
60	68.9	143.7	63,500	59,600	56,000	50,600*	60
65	66.8	141.6	56,900	53,600	50,600	45,900*	65
70	64.6	139.2	51,300	48,500	46,000	41,900*	70
75	62.4	136.7	46,600	44,200	42,000	38,400*	75
80	60.2	133.8	42,500	40,500	38,600	35,400*	80
85	57.9	130.7	39,000	37,200	35,500	32,700*	85
90	55.6	127.3	35,900	34,300	32,900	30,300*	90
95	53.1	123.6	33,100	31,800	30,500	28,100*	95
100	50.7	119.6	30,700	29,500	28,400	26,200*	100
105	48.1	115.2	28,500	27,500	26,400	24,400*	105
110	45.4	110.3	26,500	25,600	24,700	22,800*	110
115	42.5	105.0	24,700	23,900	23,100	21,300*	115
120	39.5	99.0	23,100	22,400	21,600	20,000*	120
125	36.3	92.4	21,600	20,900	20,300	18,700*	125
130	32.8	84.9	20,200	19,600	19,100	17,600*	130
135	28.9	76.2	18,900	18,400	17,900	16,500*	135
140	24.4	65.9	17,700	17,300	16,900	15,500*	140
145	19.0	52.7	16,600	16,200	15,900	14,500*	145

# MLC165 S-2



 157.5 ft							
ft	°	ft	0° lb	1° lb	2° lb	3° lb	ft
30	81.6	162.3	156,600 *				30
32	80.8	161.9	153,200 *				32
34	80.1	161.6	141,200	118,300 *			34
36	79.3	161.2	129,900	115,600	96,700 *		36
38	78.6	160.8	120,100	107,600	95,200 *	81,800 *	38
40	77.9	160.3	111,500	100,600	91,300	80,600 *	40
42	77.1	159.9	104,100	94,300	86,000	76,300 *	42
44	76.4	159.4	97,400	88,800	81,300	72,400 *	44
46	75.6	158.8	91,500	83,700	76,900	68,800 *	46
48	74.8	158.3	86,300	79,200	73,000	65,500 *	48
50	74.1	157.7	81,500	75,100	69,400	62,400 *	50
55	72.2	156.1	71,400	66,200	61,600	55,800 *	55
60	70.2	154.3	63,200	59,000	55,200	50,200 *	60
65	68.3	152.3	56,600	53,100	49,900	45,500 *	65
70	66.3	150.1	51,000	48,000	45,300	41,500 *	70
75	64.3	147.8	46,300	43,700	41,400	38,000 *	75
80	62.2	145.1	42,200	40,000	38,000	35,000 *	80
85	60.1	142.3	38,700	36,800	35,000	32,300 *	85
90	58.0	139.2	35,600	33,900	32,300	29,900 *	90
95	55.8	135.9	32,800	31,400	30,000	27,700 *	95
100	53.6	132.2	30,400	29,100	27,900	25,800 *	100
105	51.2	128.2	28,200	27,000	25,900	24,000 *	105
110	48.8	123.9	26,200	25,200	24,200	22,400 *	110
115	46.3	119.2	24,400	23,500	22,600	21,000 *	115
120	43.7	114.1	22,800	22,000	21,200	19,600 *	120
125	41.0	108.4	21,300	20,600	19,800	18,400 *	125
130	38.1	102.2	19,900	19,300	18,600	17,200 *	130
135	35.0	95.2	18,600	18,100	17,500	16,100 *	135
140	31.6	87.4	17,500	16,900	16,400	15,100 *	140
145	27.8	78.3	16,400	15,900	15,400	14,200 *	145
150	23.5	67.5	15,300	14,900	14,500	13,300 *	150
155	18.2	53.8	14,300	14,000	13,700	12,500 *	155

# MLC165 S-2



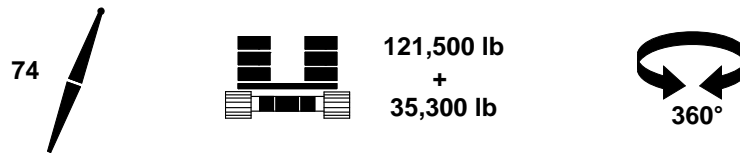
121,500 lb  
+  
35,300 lb



ft	°	ft	0° lb	1° lb	2° lb	3° lb	ft
32	81.4	171.9	144,500*				32
34	80.7	171.6	141,000	110,800*			34
36	80.0	171.2	129,700	108,900*			36
38	79.3	170.8	119,900	106,800	88,900*		38
40	78.6	170.4	111,300	99,800	87,500*	73,600*	40
42	77.9	170.0	103,800	93,600	84,900	73,500*	42
44	77.2	169.5	97,200	88,100	80,200	72,100*	44
46	76.5	169.0	91,300	83,100	76,000	68,500*	46
48	75.8	168.5	86,000	78,600	72,100	65,200*	48
50	75.0	167.9	81,200	74,500	68,600	62,100*	50
55	73.3	166.4	71,100	65,700	60,900	55,500*	55
60	71.5	164.8	63,000	58,600	54,600	49,900*	60
65	69.6	162.9	56,300	52,600	49,300	45,200*	65
70	67.8	160.9	50,700	47,600	44,700	41,200*	70
75	65.9	158.7	46,000	43,300	40,900	37,700*	75
80	64.0	156.3	41,900	39,600	37,500	34,700*	80
85	62.1	153.6	38,400	36,400	34,500	32,000*	85
90	60.1	150.8	35,300	33,500	31,900	29,600*	90
95	58.1	147.7	32,600	31,000	29,500	27,400*	95
100	56.0	144.4	30,100	28,700	27,400	25,500*	100
105	53.9	140.8	28,000	26,700	25,500	23,700*	105
110	51.8	136.9	26,000	24,900	23,800	22,100*	110
115	49.5	132.6	24,200	23,200	22,200	20,700*	115
120	47.2	128.1	22,600	21,700	20,800	19,300*	120
125	44.8	123.1	21,100	20,300	19,500	18,100*	125
130	42.3	117.7	19,700	19,000	18,300	17,000*	130
135	39.6	111.8	18,400	17,800	17,100	15,900*	135
140	36.8	105.2	17,200	16,700	16,100	14,900*	140
145	33.8	98.0	16,100	15,600	15,100	14,000*	145
150	30.5	89.8	15,100	14,700	14,200	13,100*	150
155	26.8	80.3	14,200	13,700	13,300	12,300*	155
160	22.6	69.1	13,300	12,900	12,500	11,500*	160
165	17.4	54.7	12,400	12,100	11,800	10,800*	165

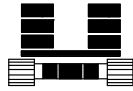


# MLC165 S-2



 177.2 ft								
ft	°	ft	0° lb	1° lb	2° lb	3° lb	ft	
34	81.2	181.6	132,400 *					34
36	80.5	181.2	129,500	102,400 *				36
38	79.9	180.9	119,700	100,600 *				38
40	79.2	180.5	111,100	98,800 *	81,000 *			40
42	78.6	180.0	103,600	92,800	80,800 *	64,100 *		42
44	77.9	179.6	97,000	87,300	79,200	64,000 *		44
46	77.2	179.1	91,100	82,400	75,000	63,900 *		46
48	76.6	178.6	85,800	77,900	71,200	63,800 *		48
50	75.9	178.1	81,000	73,800	67,700	61,700 *		50
55	74.2	176.7	70,800	65,100	60,100	55,100 *		55
60	72.5	175.2	62,700	58,000	53,800	49,500 *		60
65	70.8	173.4	56,000	52,100	48,600	44,900 *		65
70	69.1	171.5	50,400	47,100	44,100	40,800 *		70
75	67.3	169.5	45,700	42,900	40,300	37,300 *		75
80	65.6	167.2	41,600	39,200	36,900	34,300 *		80
85	63.8	164.8	38,100	35,900	34,000	31,600 *		85
90	61.9	162.1	35,000	33,100	31,300	29,200 *		90
95	60.1	159.3	32,200	30,600	29,000	27,000 *		95
100	58.2	156.2	29,800	28,300	26,900	25,100 *		100
105	56.2	152.9	27,600	26,300	25,000	23,400 *		105
110	54.2	149.3	25,600	24,400	23,300	21,800 *		110
115	52.2	145.5	23,800	22,800	21,800	20,300 *		115
120	50.1	141.3	22,200	21,200	20,300	19,000 *		120
125	47.9	136.9	20,700	19,800	19,000	17,700 *		125
130	45.7	132.1	19,300	18,600	17,800	16,600 *		130
135	43.4	126.9	18,100	17,400	16,700	15,500 *		135
140	40.9	121.2	16,900	16,300	15,600	14,500 *		140
145	38.3	115.0	15,800	15,200	14,700	13,600 *		145
150	35.6	108.2	14,800	14,300	13,700	12,700 *		150
155	32.7	100.6	13,900	13,400	12,900	11,900 *		155
160	29.5	92.1	13,000	12,500	12,100	11,200 *		160
165	25.9	82.2	12,100	11,700	11,400	10,400 *		165
170	21.8	70.5	11,300	11,000	10,600	9,700 *		170
175	16.7	55.6	10,500	10,300	10,000	9,100 *		175

# MLC165 S-2

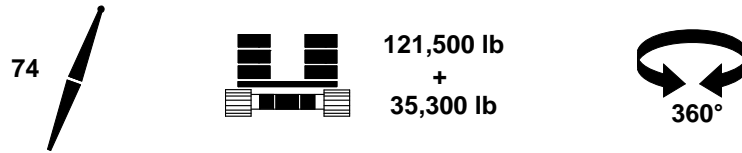


121,500 lb  
+  
35,300 lb



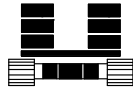
ft	°	ft	0° lb	1° lb	2° lb	3° lb	ft
34	81.7	191.6	125,400*				34
36	81.0	191.2	122,800*				36
38	80.4	190.9	119,400	95,200*			38
40	79.8	190.5	110,900	93,700*			40
42	79.2	190.1	103,400	92,000*	71,300*		42
44	78.5	189.7	96,700	86,700	71,100*	56,200*	44
46	77.9	189.2	90,800	81,700	71,000*	56,100*	46
48	77.3	188.8	85,500	77,300	70,300	56,000*	48
50	76.7	188.3	80,700	73,300	66,800	55,900*	50
55	75.1	187.0	70,600	64,600	59,400	54,700	55
60	73.5	185.5	62,500	57,600	53,200	49,300	60
65	71.9	183.9	55,800	51,700	48,000	44,600*	65
70	70.2	182.1	50,200	46,700	43,600	40,600*	70
75	68.6	180.1	45,500	42,500	39,800	37,100*	75
80	66.9	178.0	41,400	38,800	36,500	34,100*	80
85	65.2	175.7	37,900	35,600	33,500	31,400*	85
90	63.5	173.3	34,800	32,800	30,900	29,000*	90
95	61.8	170.6	32,000	30,300	28,600	26,800*	95
100	60.0	167.7	29,600	28,000	26,600	24,900*	100
105	58.2	164.7	27,400	26,000	24,700	23,200*	105
110	56.4	161.4	25,400	24,200	23,000	21,600*	110
115	54.5	157.8	23,700	22,500	21,400	20,100*	115
120	52.6	154.1	22,000	21,000	20,000	18,800*	120
125	50.6	150.0	20,500	19,600	18,700	17,500*	125
130	48.6	145.6	19,200	18,300	17,500	16,400*	130
135	46.5	141.0	17,900	17,100	16,400	15,300*	135
140	44.3	135.9	16,700	16,000	15,300	14,400*	140
145	42.1	130.5	15,700	15,000	14,400	13,400*	145
150	39.7	124.5	14,600	14,100	13,500	12,600*	150
155	37.2	118.1	13,700	13,200	12,600	11,800*	155
160	34.5	111.0	12,800	12,300	11,900	11,000*	160
165	31.7	103.1	12,000	11,500	11,100	10,300*	165
170	28.6	94.2	11,200	10,800	10,400	9,600*	170
175	25.1	84.1	10,400	10,100	9,700	9,000*	175
180	21.0	71.9	9,700	9,400	9,100	8,400*	180
185	16.0	56.4	9,100	8,800	8,500	7,800*	185

# MLC165 S-2



 196.9 ft							
ft	°	ft	0° lb	1° lb	2° lb	3° lb	ft
36	81.5	201.2	110,900 *				36
38	80.9	200.9	109,600 *				38
40	80.3	200.5	108,200 *	84,500 *			40
42	79.7	200.1	103,200	84,200 *			42
44	79.1	199.7	96,500	83,900 *	62,900 *		44
46	78.5	199.3	90,600	81,100	62,800 *	49,300 *	46
48	77.9	198.9	85,300	76,700	62,600 *	49,300 *	48
50	77.3	198.4	80,500	72,700	62,400 *	49,100 *	50
55	75.8	197.2	70,300	64,100	58,600	48,900 *	55
60	74.3	195.8	62,200	57,000	52,500	48,400	60
65	72.8	194.2	55,500	51,200	47,300	43,900	65
70	71.3	192.6	49,900	46,300	43,000	40,000	70
75	69.7	190.7	45,200	42,000	39,200	36,600	75
80	68.2	188.7	41,100	38,400	35,900	33,600	80
85	66.6	186.6	37,600	35,200	33,000	31,000	85
90	65.0	184.2	34,400	32,400	30,400	28,600 *	90
95	63.3	181.8	31,700	29,800	28,100	26,500 *	95
100	61.7	179.1	29,300	27,600	26,100	24,500 *	100
105	60.0	176.2	27,100	25,600	24,200	22,800 *	105
110	58.3	173.1	25,100	23,800	22,500	21,200 *	110
115	56.6	169.9	23,300	22,100	21,000	19,700 *	115
120	54.8	166.4	21,700	20,600	19,500	18,400 *	120
125	53.0	162.6	20,200	19,200	18,200	17,200 *	125
130	51.1	158.6	18,800	17,900	17,000	16,000 *	130
135	49.2	154.4	17,600	16,700	15,900	15,000 *	135
140	47.2	149.8	16,400	15,600	14,900	14,000 *	140
145	45.2	144.9	15,300	14,600	13,900	13,100 *	145
150	43.1	139.6	14,300	13,700	13,000	12,200 *	150
155	40.9	133.9	13,400	12,800	12,200	11,400 *	155
160	38.6	127.8	12,500	11,900	11,400	10,700 *	160
165	36.1	121.1	11,600	11,200	10,700	9,900 *	165
170	33.5	113.7	10,900	10,400	10,000	9,300 *	170
175	30.7	105.5	10,100	9,700	9,300	8,600 *	175
180	27.7	96.3	9,400	9,100	8,700	8,000 *	180
185	24.3	85.8	8,800	8,400	8,100	7,400 *	185
190	20.4	73.2	8,100	7,800	7,600	6,900 *	190
195	15.4	57.1	7,500	7,300	7,000	6,300 *	195

# MLC165 S-2

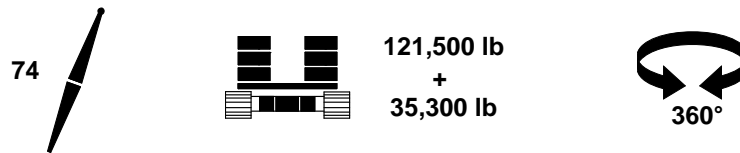


121,500 lb  
+  
35,300 lb



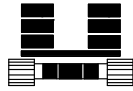
ft	°	ft	0° lb	1° lb	2° lb	3° lb	ft
38	81.3	210.8	97,600*				38
40	80.8	210.5	96,300*				40
42	80.2	210.1	95,100*	75,100*			42
44	79.7	209.8	94,000*	74,800*	55,800*		44
46	79.1	209.4	90,300	74,500*	55,700*		46
48	78.5	208.9	85,000	74,200*	55,500*	43,300*	48
50	78.0	208.5	80,200	72,100	55,300*	43,300*	50
55	76.5	207.3	70,100	63,500	55,000*	43,100*	55
60	75.1	206.0	61,900	56,500	51,800	42,800*	60
65	73.7	204.5	55,200	50,700	46,700	42,600*	65
70	72.2	202.9	49,600	45,800	42,400	39,300	70
75	70.7	201.2	44,900	41,600	38,600	35,900	75
80	69.2	199.3	40,800	38,000	35,400	33,000	80
85	67.8	197.3	37,300	34,800	32,500	30,400	85
90	66.2	195.1	34,200	32,000	29,900	28,100	90
95	64.7	192.8	31,400	29,500	27,700	26,000	95
100	63.2	190.2	29,000	27,200	25,600	24,100	100
105	61.6	187.6	26,800	25,200	23,800	22,400	105
110	60.0	184.7	24,800	23,400	22,100	20,800	110
115	58.4	181.6	23,000	21,700	20,500	19,400	115
120	56.7	178.4	21,400	20,200	19,100	18,100*	120
125	55.0	174.9	19,900	18,800	17,800	16,800*	125
130	53.3	171.2	18,500	17,600	16,600	15,700*	130
135	51.5	167.3	17,300	16,400	15,500	14,700*	135
140	49.7	163.1	16,100	15,300	14,500	13,700*	140
145	47.9	158.6	15,000	14,300	13,600	12,800*	145
150	45.9	153.8	14,000	13,300	12,700	11,900*	150
155	44.0	148.7	13,100	12,400	11,800	11,100*	155
160	41.9	143.2	12,200	11,600	11,100	10,400*	160
165	39.8	137.3	11,400	10,800	10,300	9,600*	165
170	37.5	130.9	10,600	10,100	9,600	9,000*	170
175	35.1	123.9	9,900	9,400	9,000	8,300*	175
180	32.6	116.3	9,200	8,800	8,400	7,700*	180
185	29.9	107.9	8,500	8,100	7,800	7,200*	185
190	26.9	98.4	7,900	7,500	7,200	6,600*	190
195	23.6	87.4	7,300	7,000	6,700	6,100*	195
200	19.7	74.4	6,700	6,400	6,200	5,600*	200

# MLC165 S-2



ft	°	ft	0° lb	1° lb	2° lb	3° lb	ft
40	81.2	220.5	86,500 *				40
42	80.7	220.1	85,400 *	67,200 *			42
44	80.1	219.8	84,300 *	67,000 *			44
46	79.6	219.4	83,300 *	66,700 *	49,500 *		46
48	79.0	219.0	82,200 *	66,400 *	49,300 *		48
50	78.5	218.6	80,000	66,200 *	49,200 *	38,200 *	50
55	77.2	217.5	69,800	62,900	48,800 *	37,900 *	55
60	75.8	216.2	61,600	56,000	48,400 *	37,700 *	60
65	74.4	214.8	54,900	50,200	46,100	37,500 *	65
70	73.0	213.3	49,300	45,300	41,800	37,200 *	70
75	71.6	211.6	44,600	41,100	38,000	35,200	75
80	70.2	209.9	40,500	37,500	34,800	32,300	80
85	68.8	207.9	36,900	34,300	31,900	29,800	85
90	67.4	205.9	33,800	31,500	29,400	27,500	90
95	65.9	203.6	31,100	29,000	27,100	25,400	95
100	64.5	201.3	28,600	26,800	25,100	23,500	100
105	63.0	198.7	26,400	24,800	23,300	21,800	105
110	61.5	196.0	24,400	23,000	21,600	20,300	110
115	60.0	193.2	22,700	21,300	20,100	18,900	115
120	58.4	190.1	21,000	19,800	18,700	17,600	120
125	56.8	186.9	19,500	18,400	17,400	16,400	125
130	55.2	183.4	18,200	17,100	16,200	15,300	130
135	53.6	179.8	16,900	16,000	15,100	14,200	135
140	51.9	175.9	15,700	14,900	14,100	13,300	140
145	50.2	171.8	14,700	13,900	13,100	12,400 *	145
150	48.4	167.4	13,600	12,900	12,200	11,500 *	150
155	46.6	162.7	12,700	12,000	11,400	10,700 *	155
160	44.8	157.7	11,800	11,200	10,600	10,000 *	160
165	42.8	152.4	11,000	10,400	9,900	9,300 *	165
170	40.8	146.7	10,200	9,700	9,200	8,600 *	170
175	38.7	140.6	9,500	9,000	8,500	8,000 *	175
180	36.5	133.9	8,800	8,400	7,900	7,400 *	180
185	34.2	126.7	8,200	7,700	7,300	6,800 *	185
190	31.7	118.8	7,500	7,200	6,800	6,300 *	190
195	29.1	110.1	7,000	6,600	6,300	5,700 *	195
200	26.2	100.3	6,400	6,100	5,800	5,300 *	200
205	22.9	89.0	5,800	5,600	5,300	4,800 *	205
210	19.1	75.6	5,300	5,100	4,800	4,300 *	210

# MLC165 S-2

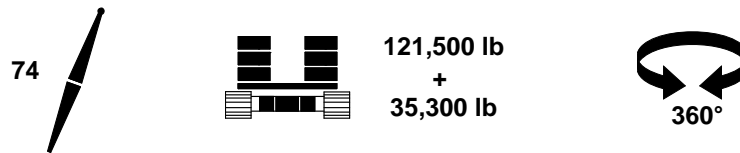


121,500 lb  
+  
35,300 lb



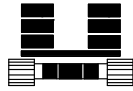
ft	°	ft	0° lb	1° lb	2° lb	3° lb	ft
40	81.6	230.5	77,200*				40
42	81.1	230.1	76,200*				42
44	80.6	229.8	75,300*	60,000*			44
46	80.0	229.4	74,300*	59,800*			46
48	79.5	229.0	73,400*	59,500*	44,000*		48
50	79.0	228.6	72,500*	59,300*	43,800*		50
55	77.7	227.6	69,500	58,700*	43,500*	33,500*	55
60	76.4	226.4	61,300	55,500	43,100*	33,200*	60
65	75.1	225.0	54,600	49,700	42,700*	33,000*	65
70	73.8	223.6	49,000	44,900	41,200	32,800*	70
75	72.5	222.0	44,300	40,700	37,500	32,600*	75
80	71.1	220.3	40,200	37,100	34,300	31,800	80
85	69.8	218.5	36,700	33,900	31,500	29,200	85
90	68.4	216.5	33,600	31,200	29,000	26,900	90
95	67.0	214.4	30,800	28,700	26,700	24,900	95
100	65.7	212.2	28,400	26,500	24,700	23,100	100
105	64.3	209.8	26,200	24,500	22,900	21,400	105
110	62.8	207.2	24,200	22,600	21,200	19,900	110
115	61.4	204.5	22,400	21,000	19,700	18,500	115
120	59.9	201.6	20,800	19,500	18,300	17,200	120
125	58.5	198.6	19,300	18,100	17,000	16,000	125
130	57.0	195.4	17,900	16,900	15,800	14,900	130
135	55.4	191.9	16,700	15,700	14,800	13,900	135
140	53.9	188.3	15,500	14,600	13,700	12,900	140
145	52.3	184.5	14,400	13,600	12,800	12,000	145
150	50.6	180.4	13,400	12,600	11,900	11,200	150
155	49.0	176.1	12,500	11,800	11,100	10,400	155
160	47.2	171.5	11,600	10,900	10,300	9,700	160
165	45.5	166.7	10,800	10,200	9,600	9,000	165
170	43.7	161.5	10,000	9,400	8,900	8,400	170
175	41.8	156.0	9,300	8,800	8,300	7,700*	175
180	39.8	150.1	8,600	8,100	7,600	7,200*	180
185	37.8	143.7	7,900	7,500	7,100	6,600*	185
190	35.6	136.8	7,300	6,900	6,500	6,100*	190
195	33.3	129.4	6,700	6,400	6,000	5,500*	195
200	30.9	121.3	6,200	5,800	5,500	5,100*	200
205	28.3	112.3	5,700	5,300	5,000	4,600*	205
210	25.5	102.2	5,200	4,900	4,600	4,100*	210
215	22.3	90.6	4,700	4,400	4,100	3,700*	215
220	18.5	76.7	4,200	4,000	3,700	3,300*	220

# MLC165 S-2



 236.2 ft							
ft	°	ft	0° lb	1° lb	2° lb	3° lb	ft
42	81.5	240.1	75,100 *				42
44	81.0	239.8	74,300 *				44
46	80.5	239.4	73,600 *	57,700 *			46
48	80.0	239.1	72,900 *	57,600 *			48
50	79.5	238.7	72,000 *	57,500 *	41,700 *		50
55	78.2	237.6	69,100	57,300 *	41,600 *	31,500 *	55
60	77.0	236.5	60,900	54,800	41,500 *	31,500 *	60
65	75.7	235.2	54,200	49,100	41,400 *	31,400 *	65
70	74.5	233.9	48,600	44,200	40,400	31,300 *	70
75	73.2	232.4	43,800	40,100	36,800	31,300 *	75
80	71.9	230.7	39,700	36,500	33,600	31,000	80
85	70.7	229.0	36,200	33,300	30,800	28,400	85
90	69.4	227.1	33,000	30,500	28,300	26,200	90
95	68.1	225.1	30,300	28,100	26,000	24,100	95
100	66.7	223.0	27,800	25,800	24,000	22,300	100
105	65.4	220.7	25,600	23,900	22,200	20,700	105
110	64.1	218.3	23,700	22,000	20,500	19,100	110
115	62.7	215.7	21,900	20,400	19,000	17,700	115
120	61.3	213.0	20,200	18,900	17,600	16,500	120
125	59.9	210.1	18,700	17,500	16,400	15,300	125
130	58.5	207.1	17,400	16,300	15,200	14,200	130
135	57.1	203.9	16,100	15,100	14,100	13,200	135
140	55.6	200.5	14,900	14,000	13,100	12,200	140
145	54.1	196.9	13,900	13,000	12,200	11,400	145
150	52.6	193.1	12,900	12,000	11,300	10,500	150
155	51.0	189.1	11,900	11,200	10,400	9,800	155
160	49.4	184.8	11,000	10,300	9,700	9,000	160
165	47.8	180.3	10,200	9,600	9,000	8,400	165
170	46.1	175.6	9,400	8,800	8,300	7,700	170
175	44.4	170.5	8,700	8,200	7,600	7,100	175
180	42.6	165.1	8,000	7,500	7,000	6,500	180
185	40.8	159.4	7,400	6,900	6,400	6,000	185
190	38.9	153.3	6,800	6,300	5,900	5,500	190
195	36.9	146.8	6,200	5,800	5,400	5,000 *	195
200	34.8	139.7	5,600	5,200	4,900	4,500 *	200
205	32.5	132.0	5,100	4,700	4,400	4,000 *	205
210	30.2	123.6	4,600	4,300	3,900	3,600 *	210
215	27.6	114.4	4,100	3,800	3,500	3,100 *	215
220	24.8	104.0	3,700	3,400	3,100		220
225	21.7	92.0	3,200	3,000			225

# MLC165 S-2



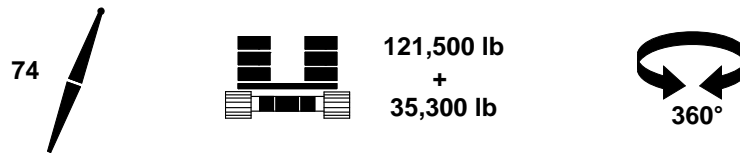
121,500 lb  
+  
35,300 lb

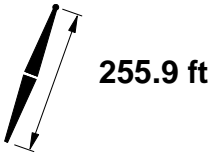


ft	°	ft	0° lb	1° lb	2° lb	3° lb	ft
44	81.3	249.8	73,100*				44
46	80.9	249.4	72,600*				46
48	80.4	249.1	72,100*	52,000*			48
50	79.9	248.7	71,200*	51,900*			50
55	78.7	247.7	68,800	51,700*	37,200*		55
60	77.5	246.6	60,600	51,500*	37,100*	27,900*	60
65	76.3	245.4	53,900	48,600	37,000*	27,800*	65
70	75.1	244.1	48,300	43,800	36,800*	27,700*	70
75	73.9	242.6	43,500	39,600	36,200	27,600*	75
80	72.7	241.1	39,400	36,000	33,000	27,600*	80
85	71.5	239.4	35,800	32,900	30,300	27,500*	85
90	70.2	237.6	32,700	30,100	27,800	25,600	90
95	69.0	235.7	30,000	27,700	25,500	23,600	95
100	67.7	233.7	27,500	25,500	23,500	21,800	100
105	66.5	231.5	25,300	23,500	21,700	20,100	105
110	65.2	229.2	23,300	21,700	20,100	18,600	110
115	63.9	226.8	21,500	20,000	18,600	17,300	115
120	62.6	224.2	19,900	18,500	17,200	16,000	120
125	61.2	221.5	18,400	17,100	15,900	14,800	125
130	59.9	218.6	17,100	15,900	14,800	13,700	130
135	58.5	215.6	15,800	14,700	13,700	12,700	135
140	57.2	212.4	14,600	13,600	12,700	11,800	140
145	55.8	209.0	13,500	12,600	11,800	10,900	145
150	54.3	205.4	12,500	11,700	10,900	10,100	150
155	52.9	201.6	11,600	10,800	10,100	9,300	155
160	51.4	197.7	10,700	10,000	9,300	8,600	160
165	49.9	193.5	9,900	9,200	8,600	7,900	165
170	48.3	189.1	9,100	8,500	7,900	7,300	170
175	46.7	184.4	8,400	7,800	7,200	6,700	175
180	45.1	179.5	7,700	7,200	6,600	6,100	180
185	43.4	174.3	7,100	6,600	6,100	5,600	185
190	41.7	168.7	6,500	6,000	5,500	5,100	190
195	39.9	162.8	5,900	5,400	5,000	4,600	195
200	38.0	156.5	5,300	4,900	4,500	4,100	200
205	36.0	149.7	4,800	4,400	4,000	3,700	205
210	34.0	142.4	4,300	3,900	3,600	3,200	210
215	31.8	134.6	3,800	3,500	3,200		215
220	29.5	125.9	3,400	3,000			220

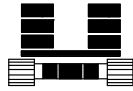


# MLC165 S-2



 255.9 ft							
ft	°	ft	0° lb	1° lb	2° lb	3° lb	ft
44	81.7	259.7	66,300 *				44
46	81.2	259.4	65,900 *				46
48	80.8	259.1	65,400 *				48
50	80.3	258.7	64,900 *	47,000 *			50
55	79.2	257.8	63,800 *	46,700 *	33,200 *		55
60	78.0	256.7	60,300	46,500 *	33,100 *	24,500 *	60
65	76.9	255.5	53,600	46,300 *	33,000 *	24,500 *	65
70	75.7	254.3	48,000	43,300	32,900 *	24,400 *	70
75	74.5	252.9	43,200	39,200	32,800 *	24,300 *	75
80	73.4	251.4	39,100	35,600	32,500	24,200 *	80
85	72.2	249.8	35,500	32,500	29,700	24,200 *	85
90	71.0	248.1	32,400	29,700	27,200	24,200 *	90
95	69.8	246.3	29,600	27,200	25,000	23,000	95
100	68.6	244.3	27,200	25,000	23,100	21,200	100
105	67.4	242.3	25,000	23,000	21,300	19,600	105
110	66.2	240.1	23,000	21,200	19,600	18,100	110
115	65.0	237.8	21,200	19,600	18,100	16,700	115
120	63.7	235.3	19,600	18,100	16,700	15,500	120
125	62.5	232.7	18,100	16,700	15,500	14,300	125
130	61.2	230.0	16,700	15,500	14,300	13,200	130
135	59.9	227.1	15,400	14,300	13,200	12,200	135
140	58.6	224.0	14,300	13,200	12,200	11,300	140
145	57.2	220.8	13,200	12,200	11,300	10,400	145
150	55.9	217.5	12,200	11,300	10,400	9,600	150
155	54.5	213.9	11,200	10,400	9,600	8,900	155
160	53.1	210.2	10,300	9,600	8,800	8,100	160
165	51.7	206.3	9,500	8,800	8,100	7,500	165
170	50.3	202.2	8,800	8,100	7,400	6,800	170
175	48.8	197.8	8,000	7,400	6,800	6,200	175
180	47.3	193.2	7,300	6,800	6,200	5,700	180
185	45.7	188.4	6,700	6,100	5,600	5,100	185
190	44.1	183.3	6,100	5,600	5,100	4,600	190
195	42.4	177.9	5,500	5,000	4,600	4,100	195
200	40.7	172.2	4,900	4,500	4,100	3,700	200
205	39.0	166.1	4,400	4,000	3,600	3,200	205
210	37.1	159.6	3,900	3,500	3,200		210
215	35.2	152.6	3,400	3,100			215
220	33.2	145.1	3,000				220

# MLC165 S-2

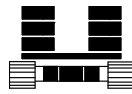


121,500 lb  
+  
35,300 lb



ft	°	ft	0° lb	1° lb	2° lb	3° lb	ft
46	81.5	269.4	61,600*				46
48	81.1	269.0	61,100*				48
50	80.7	268.7	60,700*	43,200*			50
55	79.6	267.8	59,700*	43,000*	30,200*		55
60	78.5	266.8	58,600*	42,900*	30,200*	22,000*	60
65	77.4	265.7	53,300	42,700*	30,100*	22,000*	65
70	76.3	264.4	47,700	42,500*	30,000*	22,000*	70
75	75.1	263.1	42,900	38,700	29,900*	21,900*	75
80	74.0	261.7	38,800	35,200	29,900*	21,900*	80
85	72.9	260.2	35,200	32,100	29,200	21,800*	85
90	71.8	258.5	32,100	29,300	26,800	21,800*	90
95	70.6	256.8	29,300	26,800	24,600	21,800*	95
100	69.5	254.9	26,900	24,600	22,600	20,700	100
105	68.3	252.9	24,700	22,700	20,800	19,100	105
110	67.1	250.8	22,700	20,900	19,200	17,600	110
115	66.0	248.6	20,900	19,200	17,700	16,300	115
120	64.8	246.3	19,300	17,700	16,300	15,000	120
125	63.6	243.8	17,800	16,400	15,100	13,900	125
130	62.3	241.2	16,400	15,100	13,900	12,800	130
135	61.1	238.4	15,100	14,000	12,900	11,800	135
140	59.9	235.6	14,000	12,900	11,900	10,900	140
145	58.6	232.5	12,900	11,900	10,900	10,000	145
150	57.3	229.3	11,900	10,900	10,100	9,200	150
155	56.0	226.0	10,900	10,100	9,300	8,500	155
160	54.7	222.5	10,100	9,300	8,500	7,800	160
165	53.4	218.8	9,200	8,500	7,800	7,100	165
170	52.0	214.9	8,500	7,800	7,100	6,500	170
175	50.6	210.8	7,700	7,100	6,500	5,900	175
180	49.2	206.6	7,100	6,400	5,900	5,300	180
185	47.8	202.0	6,400	5,800	5,300	4,800	185
190	46.3	197.3	5,800	5,300	4,700	4,200	190
195	44.7	192.3	5,200	4,700	4,200	3,800	195
200	43.2	187.0	4,700	4,200	3,700	3,300	200
205	41.6	181.5	4,100	3,700	3,300		205
210	39.9	175.6	3,600	3,200			210
215	38.2	169.3	3,200				215

# MLC165 S-2



121,500 lb  
+  
35,300 lb



ft	°	ft	lb
48	81.4	279.0	54,900*
50	81.0	278.7	54,500*
55	79.9	277.8	53,600*
60	78.9	276.8	52,700*
65	77.8	275.8	51,800*
70	76.8	274.6	47,300
75	75.7	273.3	42,600
80	74.6	271.9	38,400
85	73.5	270.5	34,900
90	72.4	268.9	31,700
95	71.3	267.2	29,000
100	70.2	265.4	26,500
105	69.1	263.5	24,300
110	68.0	261.5	22,300
115	66.9	259.4	20,500
120	65.7	257.1	18,900
125	64.6	254.8	17,400
130	63.4	252.3	16,000
135	62.2	249.7	14,800
140	61.1	246.9	13,600
145	59.9	244.0	12,500
150	58.6	241.0	11,500
155	57.4	237.8	10,600
160	56.2	234.5	9,700
165	54.9	231.0	8,900
170	53.6	227.3	8,100
175	52.3	223.5	7,400
180	51.0	219.5	6,700
185	49.6	215.2	6,000
190	48.2	210.8	5,400
195	46.8	206.1	4,800
200	45.3	201.3	4,300
205	43.8	196.1	3,800
210	42.3	190.7	3,300