

Clamshell/Grapple Capacities

Boom No. 74A

79,400 lb Crane Counterweight

0 lb Carbody Counterweight

Crawler Machine on a Barge

0 Degree thru 1 Degree and

1 Degree thru 3 Degree Static Machine List

No Travel - 360 Degree Rating

MLC165-1



LIFTING CAPACITIES: Lifting capacities are for a crawler machine when operating on a barge. Machine shall be positively secured to prevent shifting. Lifting capacities for various boom lengths and operating radii are for freely suspended loads and do not exceed 67.5% of a static tipping load. Capacities are based on tipping, structural competence (*), operating speeds and other factors..

Weight of bucket is considered part of load. Where no capacity is shown, operation is not intended or approved.

Clamshell/grapple capacities shown are intended for limited duration applications. Continuous operation at these capacities may reduce component life.

OPERATING CONDITIONS: Machine to operate on a firm, level, and uniformly supporting surface with machine list not to exceed degrees noted. Refer to Boom Rigging No. 81023602 and Wire Rope Specification chart No. 9558-A. Crane operator judgment must be used to allow for dynamic load effects of swinging, hoisting or lowering, wind conditions, as well as adverse operating conditions and physical machine depreciation. Refer to the Operator Manual for operating guidelines.

WIND CONDITIONS: Machine may be operated in winds up to 35 mph provided crane operator judgment is used to allow for wind effect on lifted load and other considerations noted on capacity chart are followed. Wind speed to be measured at boom point elevation. **Operation is not permitted when wind is above 35 mph.** Park crane with bucket on ground or secured and position boom at 50 degrees. Lower boom onto blocking at ground level when wind is above 50 mph.

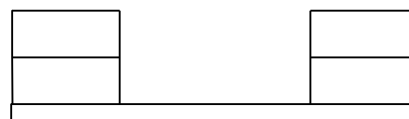


OPERATING RADIUS: Operating radius is horizontal distance from axis of rotation at barge deck to center of gravity of freely suspended load.



BOOM ANGLE: Boom angle in degrees (°) is angle between horizontal and centerline of boom butt and inserts, and is an indication of operating radius. In all cases, operating radius shall govern capacity.

MACHINE EQUIPMENT: Machine equipped with 26 ft 2 in. crawlers, 43 in. treads, 23 ft 7 in. live mast, 18 part boom hoist reeving, boom support straps, 79,400 lb crane counterweight, and 0 lb carbody counterweight.



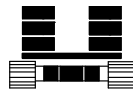
79,400 lb Crane Counterweight
4 Side Boxes

WARNING: Free fall operation is limited to 13,000 lb per part of line when lowering load with free fall clutch/brake pedal. Hydraulic power must be used for full line pull.

Explanation of Symbols



Boom No. 74A



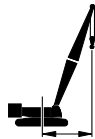
Crane Counterweight
+
Carbody Counterweight



360 Degree Rating



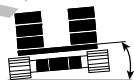
Boom Length



Operating Radius
(see page 1)



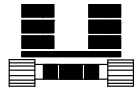
Boom Angle
(see page 1)



Machine List



Lifting Capacities
(see page 1)



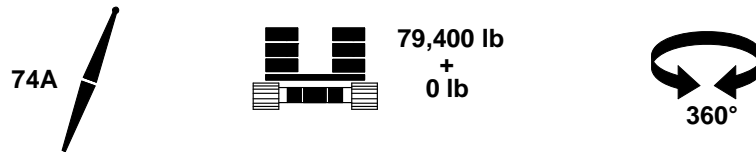
79,400 lb
+
0 lb



49.2 ft				
ft	o	ft	0° - 1° lb	1° - 3° lb
30	63.0	49.5	26,000	26,000
35	56.0	46.2	26,000	26,000
40	48.4	42.0	26,000	26,000
45	39.6	36.3	26,000	26,000
50	28.3	28.1	26,000	25,700

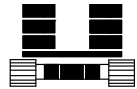
59.1 ft				
ft	o	ft	0° - 1° lb	1° - 3° lb
30	67.8	60.5	26,000	
35	62.4	58.0	26,000	23,500
40	56.6	54.8	26,000	23,500
45	50.4	50.8	26,000	23,500
50	43.5	45.7	26,000	23,500
55	35.5	39.2	25,200	23,100
60	25.2	29.8	21,700	20,400

REFERENCE ONLY



68.9 ft				
ft	o	ft	lb	lb
35	66.6	69.1	26,000	22,700
40	62.0	66.5	26,000	22,700
45	57.0	63.3	26,000	22,700
50	51.8	59.5	26,000	22,700
55	46.1	54.8	24,900	22,700
60	39.8	49.1	21,400	19,800
65	32.4	41.7	18,500	17,200
70	22.8	31.3	15,800	14,800

78.7 ft				
ft	o	ft	lb	lb
40	65.8	77.6	26,000	22,600
45	61.6	74.9	26,000	22,600
50	57.3	71.8	26,000	22,600
55	52.8	68.1	24,600	22,400
60	48.0	63.7	21,300	19,400
65	42.7	58.5	18,400	16,800
70	36.8	52.1	15,900	14,500
75	29.9	44.0	13,600	12,500
80	20.9	32.6	11,600	10,700



79,400 lb
+
0 lb

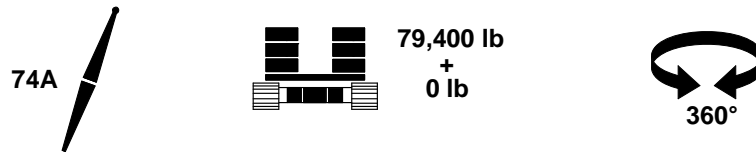


360°

88.6 ft				
ft	o	ft	lb	lb
40	68.6	88.4	26,000	
45	65.1	86.1	26,000	22,300
50	61.4	83.4	26,000	22,300
55	57.6	80.3	24,500	22,000
60	53.6	76.7	21,200	19,100
65	49.4	72.5	18,400	16,600
70	44.9	67.6	15,900	14,300
75	39.9	61.8	13,700	12,400
80	34.4	54.9	11,800	10,600
85	27.8	46.1	10,000	9,000

98.4 ft				
ft	o	ft	lb	lb
45	67.7	96.9	26,000	
50	64.5	94.6	26,000	22,200
55	61.2	91.9	23,900	21,300
60	57.8	88.8	20,800	18,400
65	54.2	85.2	17,900	15,900
70	50.5	81.2	15,500	13,800
75	46.5	76.6	13,400	11,800
80	42.2	71.2	11,400	10,100
85	37.6	64.9	9,700	8,600
90	32.3	57.4	8,200	7,200
95	26.1	48.0	6,700	5,900

REFERENCE ONLY



108.3 ft				
ft	o	ft	lb	lb
50	67.0	105.5	25,700	
55	64.1	103.1	23,500	20,900
60	61.1	100.3	20,700	18,100
65	57.9	97.3	17,900	15,700
70	54.7	93.8	15,500	13,500
75	51.4	89.8	13,300	11,700
80	47.8	85.4	11,500	10,000
85	44.1	80.4	9,800	8,500
90	40.0	74.6	8,200	7,100
95	35.6	67.8	6,900	5,900
100	30.6	59.8	5,600	

118.1 ft				
ft	o	ft	lb	lb
55	66.4	114.0	22,800	20,100
60	63.7	111.6	20,000	17,300
65	60.9	108.8	17,300	14,900
70	58.1	105.7	14,900	12,900
75	55.1	102.3	12,800	11,000
80	52.1	98.5	11,000	9,400
85	48.9	94.2	9,300	7,900
90	45.5	89.4	7,800	6,500
95	41.9	83.9	6,400	5,300
100	38.1	77.7	5,200	



79,400 lb
+
0 lb



128.0 ft				
ft	o	ft	lb	lb
55	68.3	124.8	22,100	
60	65.9	122.5	19,500	16,700
65	63.4	120.1	16,900	14,400
70	60.8	117.3	14,600	12,300
75	58.2	114.2	12,500	10,500
80	55.5	110.8	10,600	8,900
85	52.7	107.1	9,000	7,400
90	49.8	102.9	7,500	6,100
95	46.7	98.3	6,100	

137.8 ft				
ft	o	ft	lb	lb
60	67.7	133.3	18,700	
65	65.4	131.1	16,300	13,600
70	63.1	128.6	13,900	11,600
75	60.7	125.8	11,900	9,800
80	58.3	122.7	10,000	8,200
85	55.8	119.4	8,400	6,700
90	53.2	115.7	6,900	5,400
95	50.5	111.6	5,600	

REFERENCE ONLY