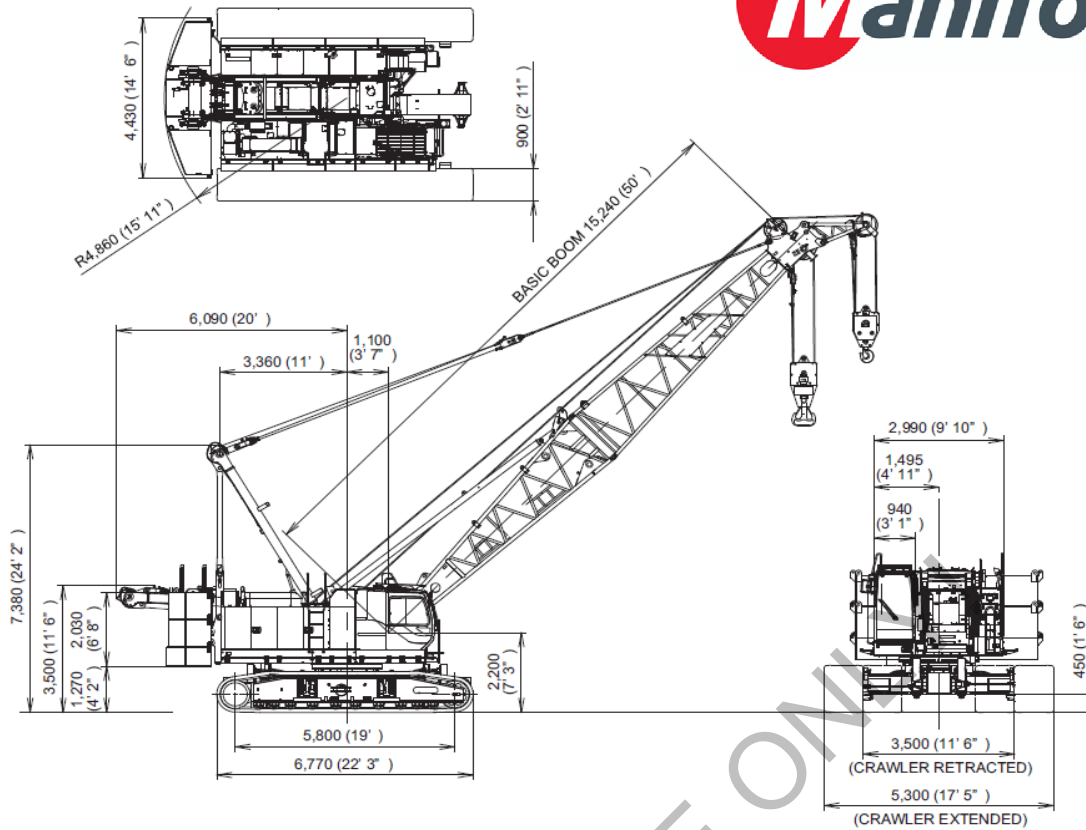


MANITOWOC 12000-1 C.G. CHART

UNIT: mm (ft-in)



NAME	WEIGHT kg	C.G. (UNITmm)		REMARK
		HORIZONTAL	HEIGHT	
UPPER MAIN BODY	16,962	-1,028	2,413	FREE, WITHOUT 3RD
LOWER MAIN BODY	33,991	-153	673	
CAR BODY WIGHT	6,501	0	691	
SELF REMOBAL UNIT	982	-4,023	2,477	
MAIN HOIST ROPE	804	-230	2,350	
AUX. HOIST ROPE	714	-1,255	2,350	
BOOM HOIST ROPE	300	-3,072	2,275	
HALF OF BACKSTOP	356	617	2,988	
COUNTERWEIGHT(1)	11,595	-4,092	1,509	
COUNTERWEIGHT(2L&2R)	11,485	-4,043	2,158	
COUNTERWEIGHT(3L&3R)	11,485	-4,043	2,915	
TOTAL	95,176	-1,773	1,595	

BOOM LENGTH m(ft)	WEIGHT kg	C.G. mm
18.288 (60)	5,060	8,573
21.336 (70)	5,556	9,832
24.384 (80)	5,857	11,030
27.432 (90)	6,354	12,331
30.480 (100)	6,655	13,628
33.528 (110)	7,151	14,953
36.576 (120)	7,258	16,151
39.624 (130)	7,754	17,464
42.672 (140)	8,056	18,866
45.720 (150)	8,552	20,191
48.768 (160)	8,659	21,587
51.816 (170)	9,155	22,892
54.864 (180)	9,457	24,357
57.912 (190)	9,953	25,670
60.960 (200)	10,060	27,206
64.008 (210)	10,556	28,497
67.056 (220)	10,857	30,005
70.104 (230)	11,354	31,302

TIPPING POINT(mm)

SIDE(LOWER ROLLER TREAD CENTER)	2,200
---------------------------------	-------

NOTE:

※DATUM POINT OF C.G.

HORIZONTAL:FROM CENTER OF SWING(+:FORWARD, -:BACKWARD)

HEIGHT:FROM GROUND

※LOWER MAIN BODY WEIGHT INCLUDES WEIGHT OF ALL SHOES.

※ALL WIREROPE ARE WOUND UP IN THE DRUMS.

※IF KOBELCO HOOK BLOCK IS ATTACHED WITH MACHINE, USE BELOW CHART.

TYPE OF HOOK	WEIGHT kg
120t (110t)	1700
70t	900
35t	700
13.5t Ball Hook	450

※BOOM WEIGHT INCLUDES WEIGHT OF GUY CABLE.

※BOOM WEIGHT INCLUDES HALF OF BACKSTOP WEIGHT.

※C.G. IS DISTANCE FROM BOOMFOOT PIN CENTER.