

Clamshell/Grapple Capacities

Boom No. B10:76A

51 980 kg Crane Counterweight

0 kg Carbody Counterweight

Crawler Machine on a Barge

0 Degree thru 1 Degree and

1 Degree thru 3 Degree Static Machine List

No Travel - 360 Degree Rating

MLC200 SERIES 1



LIFTING CAPACITIES: Lifting capacities are for a crawler machine when operating on a barge. Machine shall be positively secured to prevent shifting. Lifting capacities for various boom lengths and operating radii are for freely suspended loads and may be based on percent of static tipping or strength of structural components. Capacities must be reduced by applicable deducts.

Weight of bucket is considered part of load. Where no capacity is shown, operation is not intended or approved.

Clamshell/grapple capacities shown are intended for limited duration applications. Continuous operation at these capacities may reduce component life.

OPERATING CONDITIONS: Machine to operate on a firm and uniformly supporting surface with machine list not to exceed degrees noted. Refer to Boom Rigging No. 80149429, Wire Rope Specifications chart No. A018-B, and Counterweight Arrangements chart No. A004-A. Crane operator judgment must be used to allow for dynamic load effects of swinging, hoisting or lowering, wind conditions, as well as adverse operating conditions and physical machine depreciation. Refer to the Operator Manual for operating guidelines.

WIND CONDITIONS: Machine may be operated in winds up to 16 m/s provided crane operator judgment is used to allow for wind effect on lifted load and other considerations noted on capacity chart are followed. Wind speed to be measured at boom point elevation. **Operation is not permitted when wind is above 16 m/s.** Park crane with bucket on ground or secured and position boom at 50 degrees. Lower boom onto blocking at ground level when wind is above 22 m/s.



OPERATING RADIUS: Operating radius is horizontal distance from axis of rotation at barge deck to center of gravity of freely suspended load.



BOOM ANGLE: Boom angle in degrees (°) is angle between horizontal and centerline of boom butt and inserts, and is an indication of operating radius. In all cases, operating radius shall govern capacity.

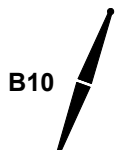
MACHINE EQUIPMENT: Machine equipped with 8 280 mm crawlers, 1 200 mm treads, 3 124 mm retractable gantry, 8 250 mm live mast, 20 part boom hoist reeving, and boom support straps.

Raising Ability Over End or Side of Crawlers

Boom Length (m)	Maximum Number of Lower Boom Point Sheaves	Machine List	
		0° - 1°	1° - 3°
		Bucket Weight (kg)	
20,0 - 41,0	7	3 625	3 625

Bucket weight includes the weight of all blocks, hooks, bucket, weight ball, slings and hoist lines beneath boom point sheaves.

Explanation of Symbols



Boom No. B10:76A



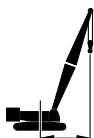
Crane Counterweight
+
Carbody Counterweight



360 Degree Rating



Boom Length



Operating Radius
(see page 1)



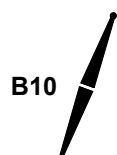
Boom Angle
(see page 1)



Machine List



Lifting Capacities
(see page 1)



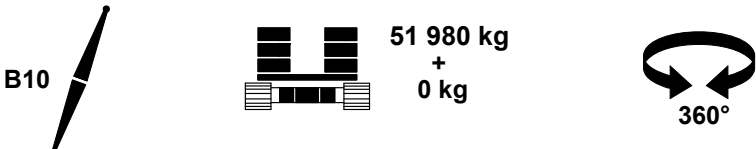
51 980 kg
+
0 kg




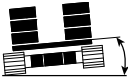

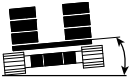






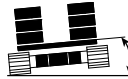

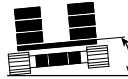

20,0 m			
m	o	kg	kg
13,7	55,7	11 700	11 700
14,0	54,7	11 700	11 700
15,0	51,0	11 700	11 700
16,0	47,1	11 700	11 700
18,0	38,3	11 700	11 700

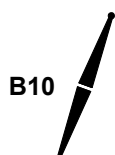
23,0 m			
m	o	kg	kg
12,2	65,1	11 700	
13,0	62,8	11 700	
14,0	59,9	11 700	11 700
15,0	57,0	11 700	11 700
16,0	53,9	11 700	11 700
18,0	47,3	11 700	11 700
20,0	39,8	11 700	11 000
22,0	30,8	10 900	9 800

REFERENCE ONLY



 26,0 m			
 m	 °	 0° - 1°  kg	 1° - 3°  kg
12,2	68,2	11 700	
13,0	66,2	11 700	
14,0	63,7	11 700	11 700
15,0	61,2	11 700	11 700
16,0	58,6	11 700	11 700
18,0	53,2	11 700	11 700
20,0	47,3	11 700	11 000
22,0	40,8	10 900	9 800
24,0	33,2	9 900	8 800

 29,0 m			
 m	 °	 0° - 1°  kg	 1° - 3°  kg
13,7	67,3	11 700	11 700
14,0	66,6	11 700	11 700
15,0	64,4	11 700	11 700
16,0	62,2	11 700	11 700
18,0	57,6	11 700	11 700
20,0	52,7	11 700	11 000
22,0	47,4	10 900	9 800
24,0	41,6	9 900	8 800
26,0	35,1	8 600	7 900



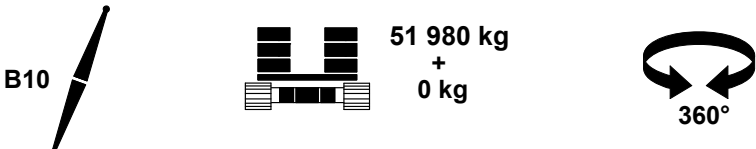
51 980 kg
+
0 kg




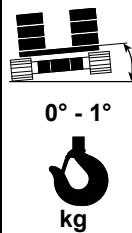
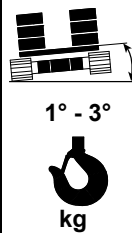



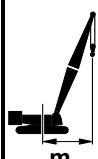

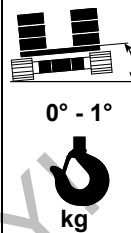
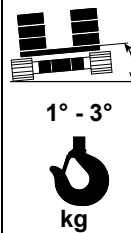
32,0 m			
m	o	kg	kg
13,7	69,5	11 700	11 700
14,0	69,0	11 700	11 700
15,0	67,0	11 700	11 700
16,0	65,1	11 700	11 700
18,0	61,0	11 700	11 700
20,0	56,8	11 700	11 000
22,0	52,3	10 900	9 800
24,0	47,5	9 900	8 800
26,0	42,3	8 700	7 900
28,0	36,5	7 300	7 100
30,0	29,8	6 100	6 000

35,0 m			
m	o	kg	kg
15,2	68,7	11 700	11 700
16,0	67,3	11 700	11 700
18,0	63,7	11 700	11 700
20,0	59,9	11 700	10 900
22,0	56,0	10 900	9 700
24,0	51,9	9 700	8 700
26,0	47,6	8 300	7 800
28,0	42,8	7 000	6 900
30,0	37,7	5 800	5 700
32,0	31,7	4 600	4 500

REFERENCE ONLY



 38,0 m			
 m	 °	 0° - 1° kg	 1° - 3° kg
16,8	68,0	11 700	11 700
18,0	65,9	11 700	11 700
20,0	62,6	11 700	10 900
22,0	59,1	10 800	9 700
24,0	55,4	9 500	8 700
26,0	51,7	8 100	7 800
28,0	47,6	6 800	6 600
30,0	43,3	5 600	5 400
32,0	38,6	4 400	4 200

 41,0 m			
 m	 °	 0° - 1° kg	 1° - 3° kg
16,8	69,7	11 700	11 700
18,0	67,8	11 700	11 700
20,0	64,7	11 700	10 800
22,0	61,6	10 500	9 600
24,0	58,3	9 100	8 500
26,0	54,9	7 700	7 300
28,0	51,4	6 400	6 100
30,0	47,7	5 200	5 000
32,0	43,7	3 900	3 700