

**GROVE<sup>®</sup>**

**GMK CARE CATALOGUE**  
**GMK MAINTENANCE PARTS, TOOLS &**  
**INFORMATION**

01/2025



# EXTEND THE LIFE OF YOUR CRANE

Dear Customer,

Thank you for trusting our cranes for your rigging and lifting solutions. We look forward to serving you and servicing your cranes throughout their lifespan. Our global network of service locations and dealers is ready to provide expert support for your technical and operational questions.

Since 1902, The Manitowoc Company, Inc., a global crane manufacturer and lifting solution provider, has been serving customers like you, as we Build Something Real in the world, through our product brands of Grove, Manitowoc, National Crane Potain, and Shuttlelift. It is our mission to keep your cranes in optimal condition and performance to maximize the return on your investment.

This Care catalog provides a quick reference for common maintenance items, tools, and repair options. For all your parts and service inquiries and lifting solution needs, please reach out to one of our service locations or dealers.

**To download the latest version of this brochure please scan the QR code.**



<https://www.manitowoc.com/parts/mobile-cranes-parts>

# CONTENTS

<b>Maintenance Kits</b> .....	4
500 Hours Maintenance Kits .....	6
1000 Hours Maintenance Kits .....	9
2000 Hours Maintenance Kits .....	14
Lubrication .....	18
Boom Grease Spay Set .....	22
Boom Lubrication Kit .....	23
Spray Lance Set .....	24
Accumulator Charging Kit .....	26
Other Useful Kits and Tools .....	28
Training .....	30
Diagnostic Tools .....	32
Grove CONNECT .....	34
Maintenance App .....	36
Rebuild - Encore .....	38
Remanufacture .....	40
Notes .....	42

**FIND YOUR LOCAL DEALER AT:**



<https://www.manitowoc.com/dealer-locator>

# MAINTENANCE KITS

**Simple to order, cost-effective and easily available:**

GMK Maintenance kits help keep your all-terrain crane making money for you.





# MAINTENANCE KITS

**GROVE**<sup>®</sup>  
CONNECT

## 500 HOURS



The best and most convenient time to exchange a faulty or worn seal is during a visual check.

The 500h kit is equivalent to a three-to-six-month inspection.\* The details of certain maintenance steps are described in the maintenance manuals.

Grove CONNECT supports the GMK Maintenance kits with serial number display, notification and acknowledgement.

\*The content of the kit may differ between models.

**GROVE**<sup>®</sup>

# 500 HOURS

Crane Model	Engine		Crane S/No start	Maintenance Manual	500H Kit P/No
GMK 3050-2	Cummins	T4F / E5	3050 2501	3 302 853/5	04425781
		T3	3050 1501		04425780
GMK 3050-3	Cummins	T4F / E5	3050 2501	3 303 129/30	04425781
		T3	3050 1601		04425780
GMK 3060-2	Cummins	T4F / E5	3060 2601	3 303 131/2	04425781
		T3	3060 1601		04425780
GMK 3060L-1	Cummins	T4F / E5	3060 7101	3 303 086/7	04425781
		T3	3060 4601		04425780
GMK 4080-3	Mercedes	T3	4080 5101	3 303 190/1	04425837
		E5	4080 4101		
		T4F	4080 4080		
GMK 4090-1	Mercedes	T3	4090 5101	3 303 188/9	04425837
		E5	4090 4101		
		T4F	4090 4080		
GMK 4100L-2	Mercedes	T3	4100 7101	3 303 149/50	04425837
		E5	4100 4301		
		T4F	4100 4250		
GMK 4070L	Mercedes	E5	4070 0001	4 409 058/9	04425832
GMK 4080L		T3	4070 1001		
		E5	4080 0001		
GMK 5120L	Mercedes	T3	5120 5601	3 303 262/3	04425745
		E5	5120 5101		
GMK 5150-1	Mercedes	E5	5150 3501	3 302 979/80	04414510
		T4F	5150 0501		
		T3	5150 7501		
GMK 5150L-1	Mercedes	E5	5150 4501	3 302 977/8	04414510
		T4F	5150 1501		
		T3	5150 9501		
GMK 5150XL	Mercedes	E5	5150 8001	3 303 259/60	04414510
		T3	5150 6001		
GMK 5180-1	Mercedes	T4F	5180 5001	3 302 935/6	04425829
		E3A	5180 6001		
		E5	5180 8501	3 303 080	
		T3	5180 5501		
GMK 5200-1	Mercedes	T4F	5200 5501	3 302 746	04425829
		E5	5200 8501	3 303 081/2	

# 500 HOURS

Crane Model	Engine		Crane S/No start	Maintenance Manual	500H Kit P/No
GMK 5250L	Mercedes	T4F	5250 5001	3 302 744	04425829
		E3A	5250 6001		
GMK 5250L-1	Mercedes	T4F	5250 5501	3 302 870/1	04425829
		E5	5250 7001	3 303 050/1	
		T3	5250 6501		
GMK 5250XL-1	Mercedes	T4F	5250 8501	3 302 965/6	04425829
		E5	5250 9501	3 303 077/8	
		T3	5250 4501		
GMK 6300L	Mercedes	T4F	6300 5001	3 302 443/4 or 3 302 807	04425934
		T3	6300 3001		04425927
GMK 6300L-1	Mercedes	T4F	6300 5096	3 302 718/9 or 3 302 873/4	04425934
		E5	6300 6001		04425835
		T3	6300 3502		04425927
GMK 6400-1	Mercedes	E5	6400 4001	3 303 218	04414168
		T3	6400 3501		
GMK 6450-1	Mercedes	E5	6400 4001	3 303 251 or 4 409 /15/29/30	04414168
		T3	6400 3501		

Whatever the circumstance, regular maintenance ensures your crane is in good working order!

# MAINTENANCE KITS

**GROVE**<sup>®</sup>  
CONNECT

## 1000 HOURS



Good maintenance at regular intervals will make a difference in the daily reliability and long-term life of your GMK. The 1000h kit is equivalent to a 12-month inspection.\* Grove CONNECT supports the GMK Maintenance kits with serial number display, notification and acknowledgement.

\*The content of the kit may differ between models.

**GROVE**<sup>®</sup>

# 1000 HOURS

Crane Model	Engine		Crane S/No start	Maintenance Manual	1000H Kit P/No
GMK 2035E	Mercedes	E3A	2035 2001	3 112 340/1 or 3 112 983/4	03065750
GMK 3050-1	Mercedes	E3A	3050 2001	3 112 547/8 or 3 112 739/40	03065749
		E3B	3050 1001		
GMK 3055	Mercedes	E3A	3055 9001	3 112 547/8 or 3 112 739/40	03065749
		E3A	3055 2001		
		E3B	3055 1001		
GMK 3060	Mercedes	E3A	3060 4101	3 112 882/3 or 3 302 476/7	03065749
		E5B	3060 5001		
GMK 3060C	Cummins	T4F* *(some T3 downgrades)	3060 6001	3 302 573/4	04241475
GMK 3050-2	Cummins	T4F/E5	3050 2501	3 302 853/5	04299742
		T3	3050 1501		04299741
GMK 3050-3	Cummins	T4F/E5	3050 2501	3 303 129/30	04299742
		T3	3050 1601		04299741
GMK 3060-1	Cummins	T4F/E5	3060 2601	3 302 990/1	04299742
		T3	3060 1501		04299741
GMK 3060-2	Cummins	T4F/E5	3060 2601	3 303 131/2	04299742
		T3	3060 1601		04299741
GMK 3060L	Cummins	T4F/E5	3060 7001	3 302 778/9	04299742
		T3	3060 4501		04299741
GMK 3060L-1	Cummins	T4F/E5	3060 7101	3 303 086/7	04299742
		T3	3060 4601		04299741
GMk 4080-1	Mercedes	E3A	4080 2001	3 112 742/3 or 3 113 167/8 or 3 113 169/70	04175660
		E3B	4080 3001		
GMK 4100	Mercedes	Chassis E3B	4100 6001	3 112 748/9 or 3 112 628/9	03065742
GMK 4100L		Super E3A			
GMK 4100	Mercedes	Chassis E3B	4100 6501	3 113 094/5 or 3 113 101/2	04361946
GMK 4100L		Super E3B			

# 1000 HOURS

Crane Model	Engine		Crane S/No start	Maintenance Manual	1000H Kit P/No
GMK 4080-2	Mercedes	T4F	4080 4001	3 302 759/60	04181392
		T3	4080 5001		
GMK 4090	Mercedes	T4F	4090 4003	3 302 648/9	04181392
		T3	4090 5001		
GMK 4100L-1	Mercedes	T4F	4100 7001	3 302 363/4	04181392
		T3	4100 4001		
GMK 4080-3	Mercedes	T3	4080 5101	3 303 190/1	04361962
		E5	4080 4101		04361969
		T4F	4080 4080		
GMK 4090-1	Mercedes	T3	4090 5101	3 303 188/9	04361962
		E5	4090 4101		04361969
		T4F	4090 4080		
GMK 4100L-2	Mercedes	T3	4100 7101	3 303 149/50	04361962
		E5	4100 4301		04361969
		T4F	4100 4250		
GMK 4070L	Mercedes	E5	4070 0001	4 409 058/9	04425833
GMK 4080L		T3	4070 1001		
		E5	4080 0001		
		T3	4080 1001		
GMK 5095	Mercedes	Chassis E3B	5095 5004	3 112 873/4	03144113
		Super E3A			
GMK 5095	Mercedes	Chassis E3B	5095 5501	3 113 097/8	04361947
		Super E3B			
GMK 5110-1	Mercedes	Chassis E3B	5110 6001	3 112 811/2	03144315
		Super E3A			
GMK 5130-2	Mercedes	Chassis E3B	5130 7001	3 112 751/2	03144315
		Super E3A			
GMK 5110-1	Mercedes	Chassis E3B	5110 6501	3 113 099/100	04182405
		Super E3B			

# 1000 HOURS

Crane Model	Engine		Crane S/No start	Maintenance Manual	1000H Kit P/No
GMK 5130-2	Mercedes	Chassis E3B	5130 7501	3 113 091/2	04182405
		Super E3B			
GMK 5120L	Mercedes	T3	5120 5601	3 303 262/3	04377843*
		E5	5120 5101		
GMK 5150	Mercedes	T4F	5150 0002	3 302 400/1 or 3 303 036/7	04181945*
		T3	5150 7001		
GMK 5150L	Mercedes	T4F	5150 1001	3 302 398/9 or 3 303 034/5	04181945*
		T3	5150 9001		
GMK 5150-1	Mercedes	E5	5150 3501	3 302 979/80	04326493*
					04414023*
GMK 5150-1	Mercedes	T4F	5150 0501	3 302 979/80	04326493*
					04414023*
GMK 5150-1	Mercedes	T3	5150 7501	3 302 979/80	04326493*
					04414023*
GMK 5150L-1	Mercedes	E5	5150 4501	3 302 977/8	04326493*
					04414023*
GMK 5150L-1	Mercedes	T4F	5150 1501	3 302 977/8	04326493*
					04414023*
GMK 5150L-1	Mercedes	T3	5150 9501	3 302 977/8	04326493*
					04414023*
GMK 5150XL	Mercedes	E5	5150 8001	3 303 259/60	04326493*
					04414023*
GMK 5150XL	Mercedes	T3	5150 6001	3 303 259/60	04326493*
					04414023*
GMK 5170-1	Mercedes	Chassis E3B	5170 4001	3 112 876/7 or 3 113 028/9	03065745
		Super E3B			
GMK 5220	Mercedes	Chassis E3B	5220 4001	3 113 026/7 or 3 302 372	03065745
		Super E3B			

\* please consider signalcode/infotext

# 1000 HOURS

Crane Model	Engine		Crane S/No start	Maintenance Manual	1000H Kit P/No
GMK 5180-1	Mercedes	T4F	5180 5001	3 302 935/6	04165132*
		E3A	5180 6001		
GMK 5180-1	Mercedes	E5	5180 8501	3 303 080	04377860*
		T3	5180 5501		
GMK 5200-1	Mercedes	T4F	5200 5501	3 302 746	04165132*
		E5	5200 8501	3 303 081/2	04377860*
GMK 5250L	Mercedes	T4F	5250 5001	3 302 744	04165132*
		E3A	5250 6001		
GMK 5250L-1	Mercedes	E5	5250 7001	3 303 050/1	04377860*
		T3	5250 8501		
GMK 5250L-1	Mercedes	T4F	5250 5501	3 302 870/1	04165132*
GMK 5250XL-1	Mercedes	E5	5250 9501	3 303 077/8	04377860*
		T3	5250 4501		
GMK 5250XL-1	Mercedes	T4F	5250 8501	3 302 965/6	04165132*
GMK 6300L	Mercedes	E3B/T4i	6300 4001	3 302 841/2 or 3 112 924/5	04163128
		E3A/T3	6300 3001		
GMK 6300L	Mercedes	T4F	6300 5001	3 302 443/4 or 3 302 807	04182012
		T3	6300 3001		04326516
GMK 6300L-1	Mercedes	E5	6300 6001	3 302 718/9 or 3 302 873/4	04377822
		T4F	6300 5096		04182012
		T3	6300 3502		04326516
GMK 6400	Mercedes	E3B/T4i	6400 2001	3 113 072/3 or 3 302 755/6	04182195
		E3A/T3	6400 3001		
GMK 6400-1	Mercedes	E5	6400 4001	3 303 218	04362376
		T3	6400 3501		
GMK 6450-1	Mercedes	E5	6400 4001	3 303 251 or 4 409 014/15/29/30	04362376
		T3	6400 3501		
GMK 7450	Mercedes	E3A/T3	7450 8001	3 112 912/52	04163129
GMK 7450	Cummins	T4F	7450 9001	3 302 576/7	04299638

\* please consider signalcode/infotext

# MAINTENANCE KITS

**GROVE**<sup>®</sup>  
CONNECT

## 2000 HOURS



Contains all parts needed for a 24-month inspection including components that are not required for the 1000h kit inspection. \* Grove CONNECT supports the GMK Maintenance kits with serial number display, notification and acknowledgement.

\*The content of the kit may differ between the models.

# 2000 HOURS

Crane Model	Engine		Crane S/No start	Maintenance Manual	2000H Kit P/No
GMK 3050-2	Cummins	T4F / E5	3050 2501	3 302 853/5	04299742
		T3	3050 1501		04299741
GMK 3050-3	Cummins	T4F/E5	3050 2501	3 303 129/30	04299742
		T3	3050 1601		04299741
GMK 3060-2	Cummins	T4F/E5	3060 2601	3 303 131/2	04299742
		T3	3060 1601		04299741
GMK 3060L-1	Cummins	T4F/E5	3060 7101	3 303 086/7	04299742
		T3	3060 4601		04299741
GMK 4080-3	Mercedes	T3	4080 5101	3 303 190/1	04425838
		E5	4080 4101		04425839
		T4F	4080 4080		
GMK 4090-1	Mercedes	T3	4090 5101	3 303 188/9	04425838
		E5	4090 4101		04425839
		T4F	4090 4080		
GMK 4100L-2	Mercedes	T3	4100 7101	3 303 149/50	04425838
		E5	4100 4301		04425839
		T4F	4100 4250		
GMK 4070L	Mercedes	E5	4070 0001	4 409 058/9	04425834
GMK 4080L		T3	4070 1001		
		E5	4080 0001		
		T3	4080 1001		
GMK 5120L	Mercedes	T3	5120 5601	3 303 262/3	04425746*
		E5	5120 5101		
GMK 5150-1	Mercedes	E5	5150 3501	3 302 979/80	04414511* 04414513*
GMK 5150-1	Mercedes	T4F	5150 0501	3 302 979/80	04414511* 04414513*
GMK 5150-1	Mercedes	T3	5150 7501	3 302 979/80	04414511* 04414513*
GMK 5150L-1	Mercedes	E5	5150 4501	3 302 977/8	04414511* 04414513*
GMK 5150L-1	Mercedes	T4F	5150 1501	3 302 977/8	04414511* 04414513*
GMK 5150L-1	Mercedes	T3	5150 9501	3 302 977/8	04414511* 04414513*
GMK 5150XL	Mercedes	E5	5150 8001	3 303 259/60	04414511* 04414513*
		T3	5150 6001		

\* please consider signalcode/infotext

# 2000 HOURS

Crane Model	Engine		Crane S/No start	Maintenance Manual	2000H Kit P/No
GMK 5180-1	Mercedes	T4F	5180 5001	3 302 935/6	04425831*
		E3A	5180 6001		
		E5	5180 8501	3 303 080	04425830*
		T3	5180 5501		
GMK 5200-1	Mercedes	T4F	5200 5501	3 302 746	04425831*
		E5	5200 8501	3 303 081/2	04425830*
GMK 5250L	Mercedes	T4F	5250 5001	3 302 744	04425831*
		E3A	5250 5501		
GMK 5250L-1	Mercedes	T4F	5250 5501	3 302 870/1	04425831*
GMK 5250L-1	Mercedes	E5	5250 7001	3 303 050/1	04425830*
		T3	5250 6501		
GMK 5250XL-1	Mercedes	T4F	5250 8501	3 302 965/6	04425831*
GMK 5250XL-1	Mercedes	E5	5250 9501	3 303 077/8	04425830*
		T3	5250 4501		
GMK 6300L	Mercedes	T4F	6300 5001	3 302 443/4 or 3 302 807	04425935
		T3	6300 3001		04425928
GMK 6300L-1	Mercedes	T4F	6300 5096	3 302 718/9 or 3 302 873/4	04425935
		E5	6300 6001		04425836
		T3	6300 3502		04425928
GMK 6400-1	Mercedes	E5	6400 4001	3 303 218	04414169
		T3	6400 3501		
GMK 6450-1	Mercedes	E5	6400 4001	3 303 251 or 4 409 014/15/29/30	04414169
		T3	6400 3501		

\* please consider signalcode/infotext



# BOOM GREASE *PLUS*

We are proud to offer this new generation, high-density boom sliding surface lubricant that has exceptional performance at all temperatures, is long lasting, weather resistant and with tested reliability.



The following sizes are available:

Part Number	Size
04299657 (replaces: 02314184)	400gr. Cartridge
04299656 (replaces: 03329071)	400gr. Cartridge (for spray gun)
04299654 (replaces: 01373458)	10kg Bucket
04299655 (replaces: 02314698)	25kg Bucket

# A WIDER TEMPERATURE RANGE

Smooth boom operation on a telescopic crane is a fundamental requirement to all lifting duties.

Owing to the construction of modern pinned booms, with relatively thin steel sections and large wear pads, this has never been more important.

Furthermore, to ensure the smooth functioning of the cranes in different weather conditions, such as high heat, rain, snow and ice, or even a high level of dust, a special lubricant is essential.

With our latest lubricant solution, **Boom Grease Plus**, we have nearly doubled the density at high temperatures, while maintaining the low-temperatures properties. This further reduces wear and prevents stick-slip in all weather conditions.

Perfectly mixable with our previous boom grease. No cleaning out of systems, or washing off from boom surfaces necessary.

The only boom grease product specified and approved by GMK Engineering Design, and packaged specifically for us.



# OTHER ESSENTIAL LUBRICANTS

## ■ Adhesive Suspension Oil

Penetrates the tight tolerances of the moving parts inside the suspension cylinder, guaranteeing lubrication of all bearing surfaces.

There are **no equivalent or suitable alternative oils or greases** for this application.

### Part Number

02310863	1l
02312890	10l



■ **Usage:** Filling of MEGATRAK Suspension Cylinders

## ■ Penetrant Grease Spray

Applied to the exposed chrome surfaces it fills the plating microstructure through to the underlying steel, giving effective protection against corrosion that other greases and lubricants do not.

### Part Number

01929824	400ml
----------	-------



■ **Usage:** Protection of Chrome Surfaces



# OTHER ESSENTIAL LUBRICANTS

## ■ Gear Teeth Spray

A high-graphite adhesive grease recommended for lubricating the external teeth of GMK turntable bearing.

Part Number

S-01032-63                      400ml



- **Usage:** Turntable Bearing Gear Teeth

## ■ Bolt Grease 2.0

The next generation of high-graphite universal grease, which performs in a much wider temperature range. This highly recommended allrounder can be utilized for a variety of tasks like:

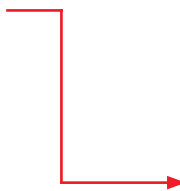


### ■ Usage:

- The boom foot pin and lift cylinder pins
- The steering elements of the MEGATRAK suspension strut
- Cardan shafts
- The central lubrication system

Part Number

03313195                      400g  
04163374                      1kg

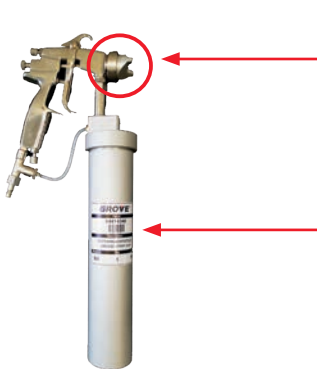


# BOOM GREASE SPRAY SET

■ Part Number 04414162

## Consisting of:

- Boom Grease *Plus* 04299656  
(3pcs.)
- Hand Spray Gun 04414346
- Spray Nozzle Head 04412196



## Additional Equipment (not included in set):

High Pressure Hose 25m 03329072  
To connect to high pressure outlet on the crane



**GROVE**®

# BOOM LUBRICATION KIT

## ■ Part Number 04414402

Designed to provide easy access to inaccessible places for tasks like lubrication inside the boom through the pinning holes.

### Consisting of:

- Grease Gun 04426008
- Spray Lance 04414389
- Boom lubrication pump 04425920
- 25kg Boom Grease Plus 04299655
- High Pressure Hose 6.5m 04426006



Spray lance with long reach to provide easy access to lubricate inside of boom through the pin holes. Length can be adapted by ordering our **Spray Lance Set**, please see next page.

A powerful pneumatic pump and a spray gun with variable pressure setting ensure a homogenous mixture of grease with air, and an even distribution of grease on the boom surface.

High density, long-life boom grease provides maximum protection from corrosion and wear. Prevents stick-slip.

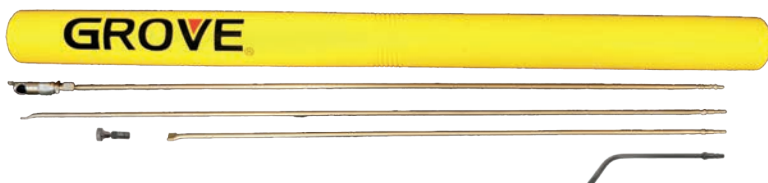
# SPRAY LANCE SET

## ■ Part Number 04414163

In addition to the **Boom Grease Spray Set** and the **Boom Lubrication Kit** we offer you the **Spray Lance Set** for even greater flexibility and to reach those inaccessible areas.

### Consisting of:

- |                              |          |
|------------------------------|----------|
| ▪ Spray Nozzle Head          | 04412195 |
| ▪ Spray Lance 170 mm, curved | 04414387 |
| ▪ Spray Lance 500 mm         | 04414388 |
| ▪ Spray Lance 1000 mm        | 04414389 |
| ▪ Lance Extension 1000 mm    | 04414390 |



Lances come in 3 different lengths and can be combined to a maximum length of almost 2 metres. A curved extension allows easy access through the pinning holes.

The 2-stage unlocking of the safety coupling ensures that the lances don't come apart during the spraying process.

Even at full lance extension of 2 metres a regular spray pattern is achieved.



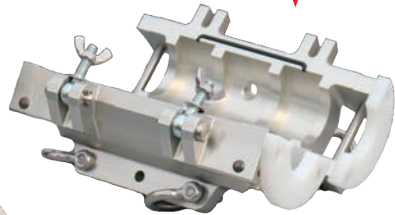
Correct and regular greasing is essential to proper boom operation, will reduce wear and tear and thereby prolong the life span of your equipment.

# ROPE CLEANER

■ Part Number 04426185

Consisting of:

- Portable Grease Transfer System 04426162
- Rope Lubrication System 04426160
- System Case with straps & shakels 04426163



Increase the working life of your crane rope considerably by regularly greasing and removing dirt and grime with this ingenious device.

# USE THE RIGHT GREASE



Don't use just any grease on your rope and risk degrading the rope or the sheaves through adverse chemical reactions.

This Rope grease is specially formulated to complement the primary rope grease used by the rope manufacturers.



## ■ Rope Grease (not included in the kit)

- Rope Lubricant 8kg **04426181**
- Rope Lubricant 25kg **04426180**

# ROPE CLEANER

■ Additional Equipment  
(not included in kit):

Rope	Cleaner Set P/No	Insert Set P/No	Insert and Cleaner Set P/No
16 mm	04426164	04426169	04426174
17 mm	04426165	04426170	04426175
19 mm	04426166	04426171	04426161
22 mm	04426167	04426172	04426176
24 mm	04426168	04426173	04426177





# ACCUMULATOR CHARGING KIT

■ Part Number 02257617

## Consisting of:

- |                                    |          |
|------------------------------------|----------|
| ▪ Hydac bladder accumulators       | 03317057 |
| ▪ Leduc bladder accumulators       | 03139028 |
| ▪ Case with insert (without tools) | 04163029 |
| ▪ Filling hose                     | 04163028 |
| ▪ Filling and testing device       | 04163027 |

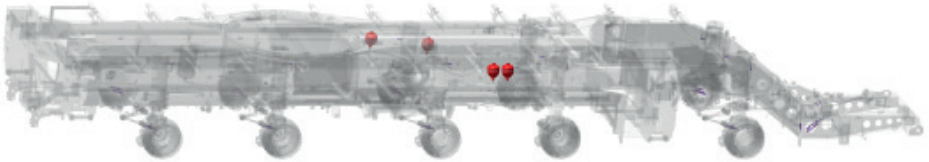
Control of the nitrogen pressure in the accumulators is essential during installation and part of routine maintenance.



## Additional Equipment (not included in kit):

- |   |          |
|---|----------|
| Pressure gauge  | 04161641 |
| Adapter for GMK 4100L-1 Tele Cylinder Accumulator   | 04183789 |
| Adapter for GMK 5250L-1 Tele Cylinder Accumulator   | 03317055 |
| Adapter for previous generation GMK cranes and TMS9000 Slewing Gear Valve Block Accumulator | 90021930 |

# MORE PRESSURE, MORE COMFORT!



If the pressure in the accumulators is too low, the following problems can occur:

- Loss of suspension comfort in the Megatrak
- Possible damage to the Megatrak cylinders, wishbones and ball joints of the steering rods
- Increased wear on tyres

The right tools can make all the difference and help to make regular maintenance quick and trouble-free.

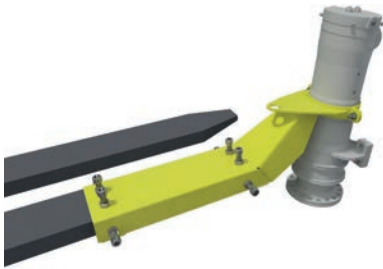
# OTHER USEFUL KITS & TOOLS

Implementing a maintenance strategy can go a long way towards improving reliability by taking the preventive and proactive, instead of the reactive, approach.

Our competitively priced repair solutions, tools and assist devices, for different applications within your maintenance regime, are here to make this as easy and convenient as possible.

You can find more information in the bulletins we have created on each topic.

■ MEGATRAK Installation Aid 04257034



■ Battery Charger (220 V) 04326178



■ Wishbone Repair Kit 04163676



■ Ad Blue Analysis Set 04433854



# OTHER USEFUL KITS & TOOLS

Subject	Bulletin	Part Number	Description
Wishbone Repair	SB D15-007	04163676	Wishbone Repair Kit
Suspension Mounting Tools	PB D19-308	04257034	Mounting Tool MegaTRAK Strut
		04257055	Mounting Tool Wheel Drive
GMK Sheave Inspection	PB D20-307	04286259	Measuring Tool for Sheave Groove
Oil Analysis		03141012	Oil Analysis Kit
Ad Blue Analysis		04433854	Ad Blue Analysis Set
GMK3050-1 Boom Retraction Cable Inspection	PB D20-309	04182194	Boom Retraction Cable Kit
Battery Maintenance	PD D20-310	04326178 220V 04326279 110V	Battery Charger with Adaptor Plug
GMK Cardan Shafts	PB D20-308		Recommended Cardan Shaft Care
CCS Jog Dial	PB D20-305	03312583	Repair Kit
Accumulator Charging	PB D24-303	02257617	Accumulator Charging Kit
Hydraulic Leaks	PB D22-301	03312789 450ml 03312791 150ml	Leak Detection Agent
GMK Hoist Maintenance	PB D22-308	see bulletin	Hoist brake & gear exchange program

# TRAINING

Our Training Centers offer courses for operators and technicians across the globe to provide in-depth instruction on crane operation, maintenance, and troubleshooting procedures.

Experienced trainers provide instruction to thousands of crane technicians and operators each year in our training centers worldwide.

Facilities include interactive training tools, fully furnished classrooms, crane operation simulators, test cranes, and lab workstations with equipment appropriate for the specific cranes and curriculum levels.

Instructor-led courses at one of our training centers are typically 3–5 days long.

- Training available in several languages
- Strategic locations around the world



# HIGH QUALITY TRAINING, ADAPTED TO YOUR NEEDS.

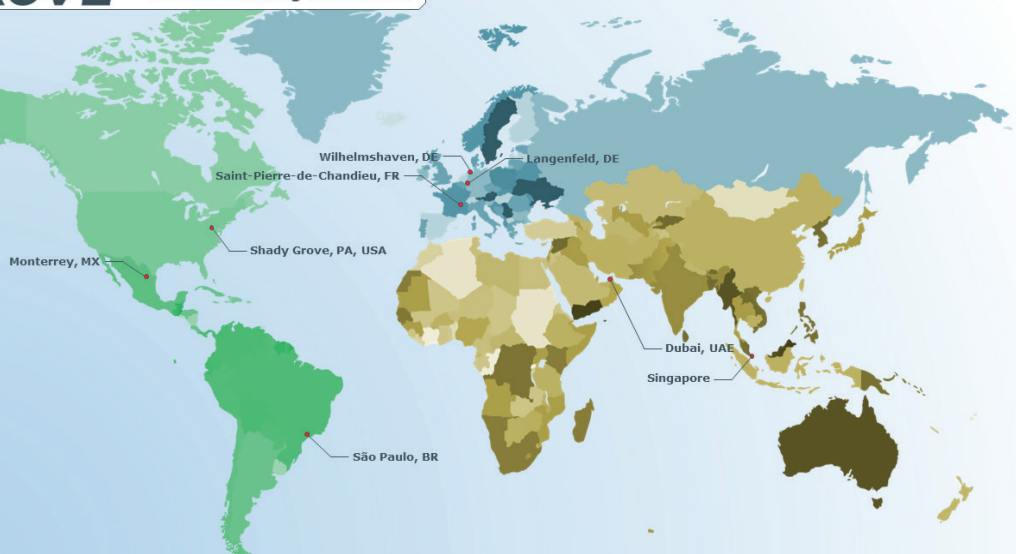
We can accommodate many language needs. Our training team speaks English, German, Spanish, Portuguese, Dutch, Italian, French, and Mandarin.

Short, online, e-Learning modules are also available to provide supplemental training material. To review our course offerings, please see our regional training catalogs at <https://www.manitowoc.com/support/training>.

If you have any questions about our training program or would like a quote, please contact us using the information in your regional training catalog or at one of the email addresses below.

- **Europe:** [trainingGMK@manitowoc.com](mailto:trainingGMK@manitowoc.com)
- **Latin America:** [LATAM.training@manitowoc.com](mailto:LATAM.training@manitowoc.com)
- **Rest of the World:** [factorytraining@manitowoc.com](mailto:factorytraining@manitowoc.com)

## **GROVE**® Global Training Locations



# DIAGNOSTIC TOOLS



- Expert tools for diagnostics and programming

Scan the QR code to see the complete listing of tools and available training classes on our website:

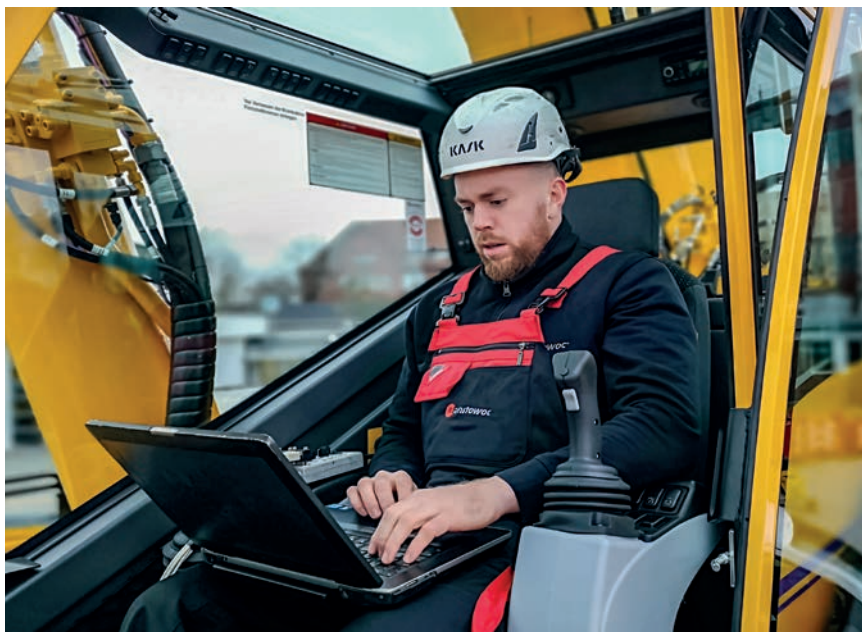


# DIAGNOSTIC TOOLS

Over the years, there have been different versions of crane operating systems, rated capacity limiters and engine/transmission combinations on GMK cranes. These all require some variation of cables and tools to perform the necessary interaction.

To help you identify all these old and new GMK diagnostic cables and tools that are required for trouble-shooting and programming of GMK cranes we have compiled an overview for your easy reference available for download from our website.

Please note that some of these tools are only available after taking the prerequisite training. For a complete listing of all available diagnostic tools please reference bulletin D19-007.



# KEEP YOUR CRANE CONNECTED

Grove CONNECT changes the user experience and makes the daily work of crane operators easier.

With Grove CONNECT, crane utilization can be increased while reducing operating costs and environmental impact.

In addition to a wide range of functions, Grove CONNECT enables easy access to the entire crane fleet in real time.



## ACCESS:

Easy remote access to your complete fleet in real time.  
Guided troubleshooting assistant.  
RCL, active faults / faults history, crane configuration.

## ANALYTICS function:

Several reports based on stored cloud data for crane utilization, crane performance and predictive service / maintenance.

## ADMIN function:

Self-Service for Customer / Service Partners, Crane Access, Crane Delegation(s), Crane Transfer(s)  
Manage user access: internal and external user accounts

## API:

Connect fleet data to your information system. Interface for 3rd party system fleet management systems AEMP 1.2

# GROVE<sup>®</sup>

## CONNECT<sup>™</sup>

Scan the QR code to check the Grove CONNECT availability in your Country:



### ■ RETROFIT KIT

Part Number 04414411



## Grove CONNECT<sup>™</sup> is available for:

- GMK3050-2 | GMK3050-3
- GMK3060-1 | GMK3060-2
- GMK3060L | GMK3060L-1
- GMK4070L
- GMK4080L
- GMK4080-2 | GMK4080-3
- GMK4090 | GMK4090-1
- GMK4100L-1 | GMK4100L-2
- GMK5120L
- GMK5150 | GMK5150-1
- GMK5150L | GMK5150L-1
- GMK5150XL
- GMK5180-1 | GMK5200-1
- GMK5250L | GMK5250L-1
- GMK5250XL-1
- GMK6400-1 | GMK6450-1

# MANITOWOC APP CENTER

The Manitowoc App Center features a centralized overview for the Diagnostic Code App, Manitowoc Garage „How-to“ videos, an updated Dealer Locator search interface and the new Permissible Wind Speed Calculator app.

Download Manitowoc’s FREE smartphone APP for iOS and Android devices to help interpret diagnostic codes generated by a crane’s operating system.

**Scan the matching QR code below to  
download the App for your device :**



**iOS**

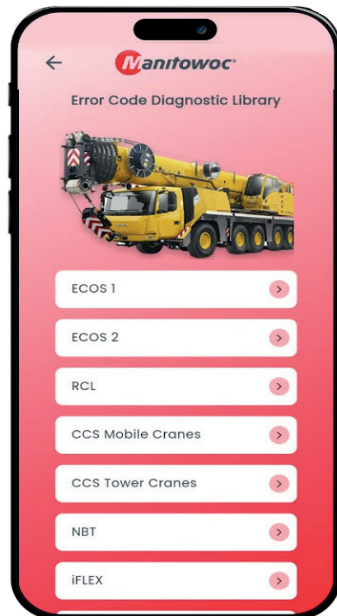


**Android**

# MANITOWOC APP CENTER

Application supports diagnostic codes on all our cranes running Manitowoc's Crane Control System (CCS) and GMK models running the ECOS1 or ECOS2 systems.

Quick assistance in troubleshooting.



# REBUILD - PREMIUM ENCORE

Through the **EnCORE** program you can have your crane rebuilt and brought back to original OEM specifications.

## Advantages:

- Give your crane a 2nd life bringing it back to like new condition.
- Premium EnCORE Rebuild comes with a full one year warranty for parts & labor.
- Crane will have a new S/N with an “R” designation
- Retain legacy operator knowledge.
- Higher resale value
- LMI and software brought up to the most current version available for your particular model.
- All work completed by EnCORE Certified Facilities.



Rebuild. Repair. Remanufacture. Exchange.

■ **Overhaul EnCORE package:**

If you are looking to upgrade your machine, the EnCORE team can work with you on a overhaul package.

Whether it is electrical, hydraulic or any of the other major systems that are in need of a rebuild.

We will create an overhaul kit package to meet your needs at very competitive pricing compared to purchasing parts individually.

**Advantages:**

- Original OEM components
- Competitively priced
- EnCORE can supply labor if needed to install your new overhaul package
- Upgrades your system to like new condition.
- 1 year parts warranty

**DPF**



# REMANUFACTURE

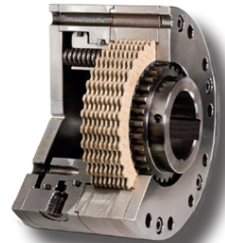
EnCORE is establishing a Global Remanufacturing program which will allow EnCORE to offer our customers a part that has been remanufactured back to original OEM specifications.

Components include hydraulic cylinders, pumps and motors, electrical components and other vital components of your crane.

## Hoist Brake

Old

Remanufactured



### Advantages :

- Fast availability
- Competitively priced compared to new
- Attractive core return credit for usable old part
- 1 Year Parts Warranty

### Large Cylinder Remanufacturing



Disassembly



Inspection



Remanufactured Cylinder

# REPAIR

If your crane has been in an accident or damaged the EnCORE team can repair your crane back to original OEM specifications.

## Advantages:

- Damaged component is repaired back to original OEM specification
- Peace of mind and the assurance that the correct material is being used to ensure a safe and reliable component being put back into service.
- Component will be thoroughly inspected to ensure all damage has been identified and repaired properly.

Before



After



Before



After



# NOTES

# NOTES

# NOTES

# NOTES

# The Manitowoc Company, Inc.

## Regional headquarters

### Americas

Milwaukee, Wisconsin, USA

Tel: + 1 414 760 4600

Shady Grove, Pennsylvania, USA

Tel: + 1 717 597 8121

### APAC

Shanghai, China

Tel: + 86 21 6457 0066

Singapore

Tel: + 65 6264 1188

### Europe and Africa

Dardilly, France – TOWERS

Tel: +33 (0) 4 72 18 20 20

Wilhelmshaven, Germany – MOBILE

Tel: +49 (0) 4421 294 0

### Middle East and India

Dubai, UAE

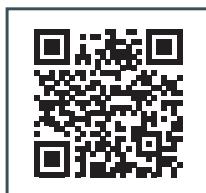
Tel: + 971 4 8862677

This document is non-contractual.

Constant improvement and engineering progress make it necessary that we reserve the right to make specification, equipment, and the price changes without notice. Illustrations shown may include optional equipment and accessories and may not include all standard equipment.

©2025 The Manitowoc Company, Inc.  
Care Catalogue  
CC 01/2025

FIND YOUR LOCAL DEALER AT :



<https://www.manitowoc.com/dealer-locator>