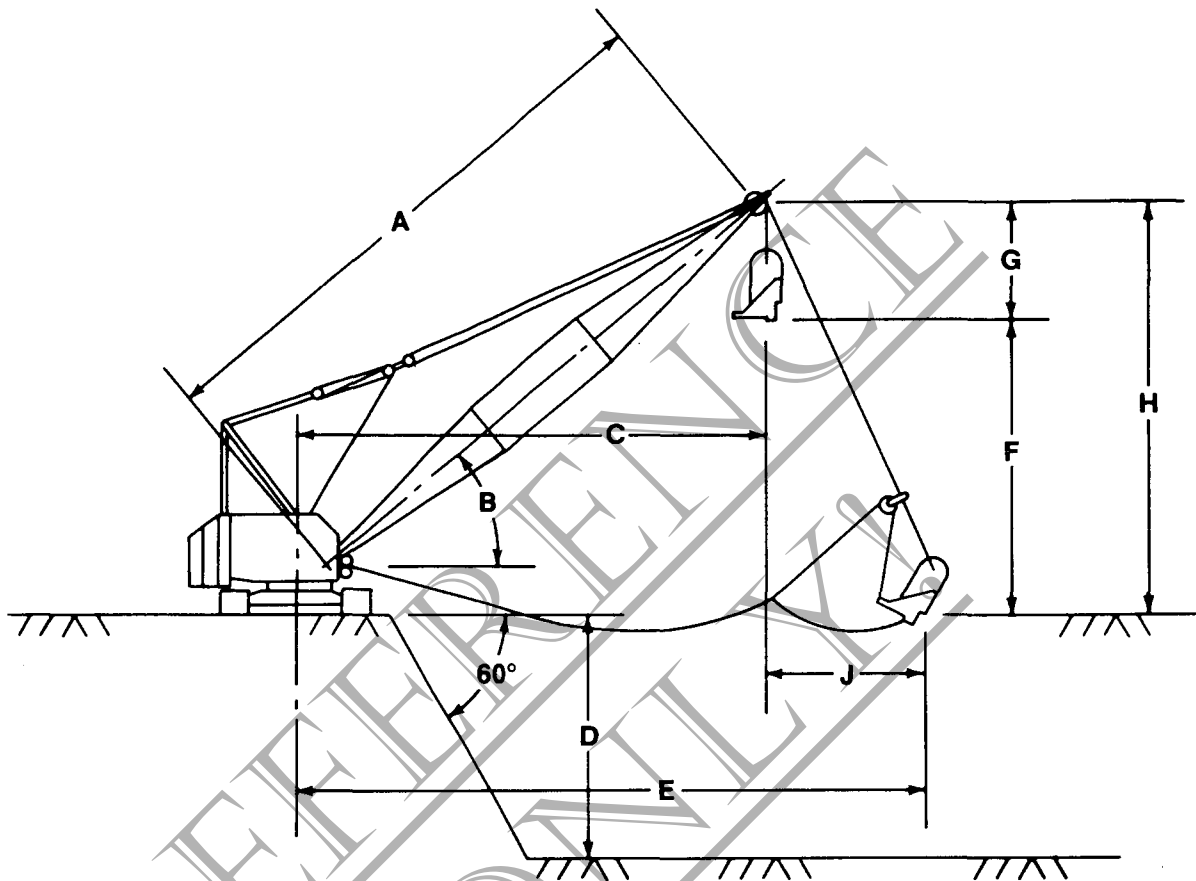


DRAGLINE RANGE DIAGRAM _____ 3900B, 3900 VICON

REVOLVING FAIRLEAD — EQUAL SPLIT DRUMS



A BOOM LENGTH	FEET	60		70		80	
	METERS	18.3		21.3		24.4	
B BOOM ANGLE	DEGREES	30	40	30	40	30	40
C CL OF ROTATION TO CENTER DUMP	FEET	57	51	66	59	74	66
	METERS	17.4	15.5	20.1	18.0	22.6	20.1
D DEPTH CUT APPROX.	FEET	46	36	51	42	46	40
	METERS	14.0	11.0	15.5	12.8	14.0	12.2
E DIGGING REACH APPROX.	FEET	64	61	75	71	85	80
	METERS	19.5	18.6	22.9	21.6	25.9	24.4
F DUMPING HEIGHT	FEET	22	31	27	37	32	43
	METERS	6.7	9.4	8.2	11.3	9.8	13.1
H HEIGHT FROM GRADE TO CL OF BOOM POINT	FEET	37	46	42	52	47	58
	METERS	11.3	14.0	12.8	15.8	14.3	17.7
J CASTING DISTANCE	FEET	7	10	9	12	11	14
	METERS	2.1	3.0	2.7	3.7	3.4	4.3

The working ranges in the table above are based on the following conditions:

1. Dimension 'F' is based on a 'G' dimension of 15' (4.6m).
2. Dimension 'D' is based on a 12' (3.7m) floor level bottom to fill the bucket and casting distance 'J' equal to approximately 1/3 the dumping height 'F'. The two dimensions are also based on equal split drums with one layer of rope. Right drum (drag) useable length — 60' (18.3m) of 1 1/4" (31.8mm)

diameter rope — lagging No. 31355. Left drum (hoist) capacity — 95' (29.0m) of 1" (25.4mm) diameter rope — lagging No. 31375. The depth of cut, casting distance and digging reach may vary considerably depending on digging conditions, design of bucket and operator's skill. Maximum digging depths are attainable under ideal conditions and cannot be guaranteed.

3. New machines equipped with wire rope to dig to a depth of 40' (12.2m).