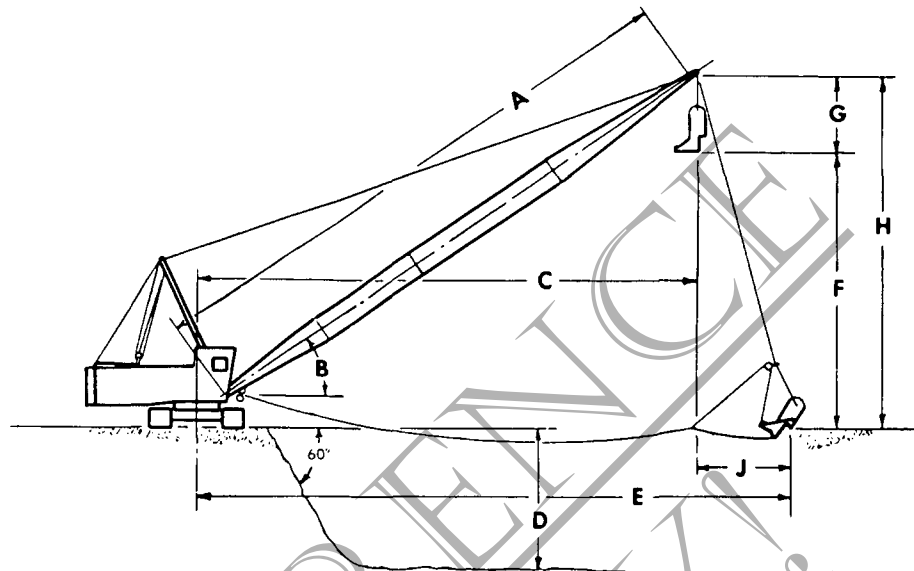


# DRAGLINE RANGE DIAGRAM

**4600 VICON**
**41" (1.0m) LAGGINGS WITH 1 5/8" (41.3mm) DRAG ROPE**


The working ranges in the table below are based on the following conditions:

1. Dimension 'F' is based on a 'G' dimension of 20' (6.1m).
2. Dimension 'D' is based on a 16' (4.9m) floor level bottom to fill the bucket and casting distance 'J' equal to approximately 1/3 the dumping height 'F'. The two dimensions are also based on maximum drum capacity with one layer of rope. Front drum (hoist) capacity — 201' (61.3m) of 1 5/8" (34.9mm) diameter rope — lagging No. 42277-W. Rear

drum (drag) capacity — 167' (50.9m) of 1 5/8" (41.3mm) diameter rope — lagging No. 43103. The depth of cut, casting distance and digging reach may vary considerably depending on digging conditions, design of bucket and operator's skill. Maximum digging depths are attainable under ideal conditions and cannot be guaranteed.

3. New machines equipped with wire rope to dig to a depth of 60' (18.3m), 70' (21.3m) and 80' (24.4m) for boom lengths of 100' (30.5m), 120' (36.6m) and 140' (42.7m) respectively.

A BOOM LENGTH	FEET	100			120			140		
	METERS	30.5			36.6			42.7		
B BOOM ANGLE	DEGREE	30	35	40	30	35	40	30	35	40
C CL OF ROTATION TO CENTER DUMP	FEET	95	90	85	112	106	100	129	123	115
	METERS	29.0	27.4	25.9	34.1	32.3	30.5	39.3	37.5	35.1
D DEPTH CUT (APPROX.)	FEET	87	82	75	118	118	110	118	107	98
	METERS	26.5	25.0	22.9	36.0	36.0	33.5	36.0	32.6	29.9
E DIGGING REACH (APPROX.)	FEET	108	105	102	128	125	122	148	146	141
	METERS	32.9	32.0	31.1	39.0	38.1	37.2	45.1	44.5	43.0
F DUMPING HEIGHT	FEET	38	45	52	48	57	65	58	68	78
	METERS	11.6	13.7	15.8	14.6	17.4	19.8	17.7	20.7	23.8
H HEIGHT FROM GRADE TO CL OF BOOM POINT	FEET	58	65	72	68	77	85	78	88	98
	METERS	17.7	19.8	21.9	20.7	23.5	25.9	23.8	26.8	29.9
J CASTING DISTANCE	FEET	13	15	17	16	19	22	19	23	26
	METERS	4.0	4.6	5.2	4.9	5.8	6.7	5.8	7.0	7.9