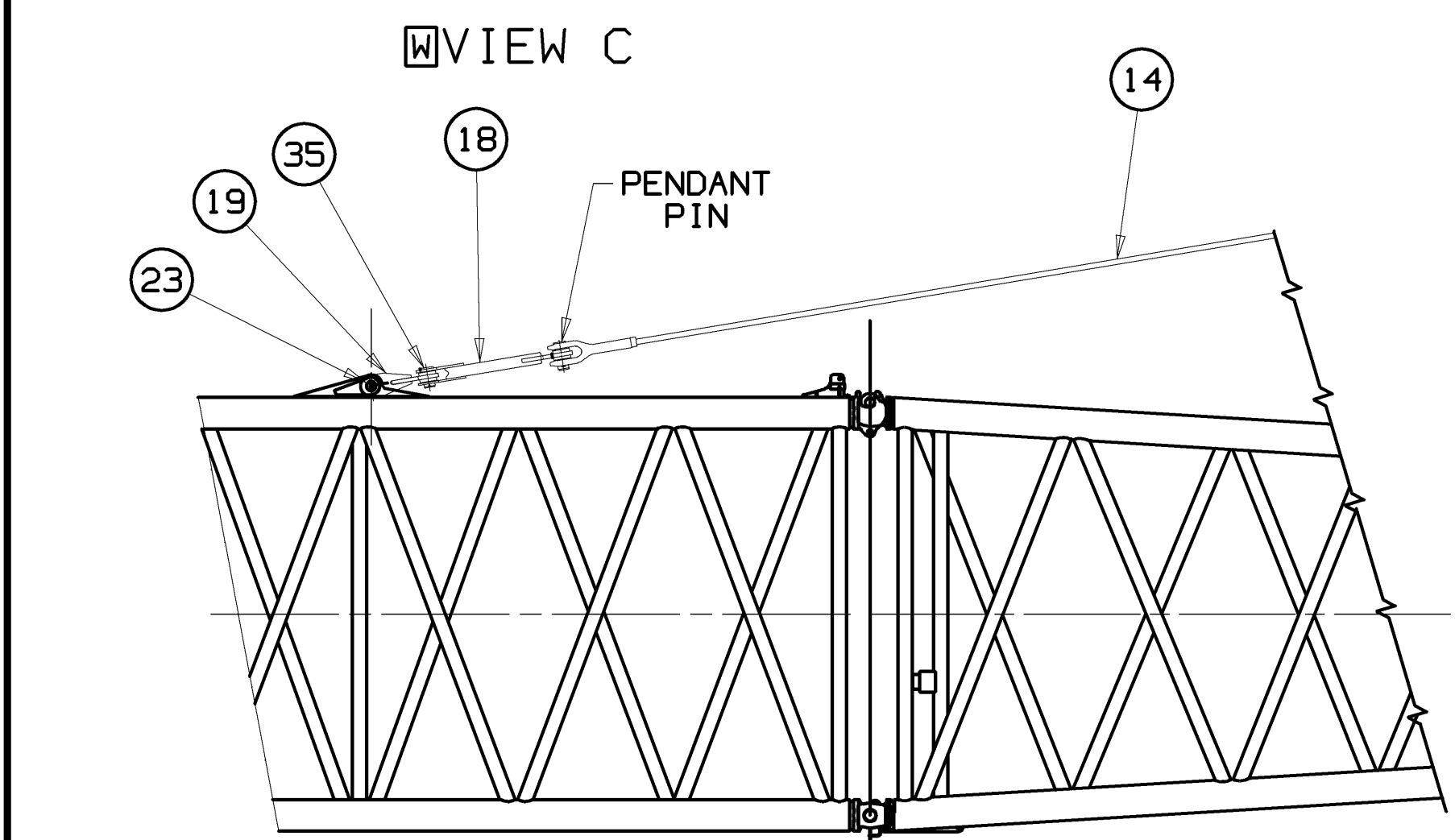
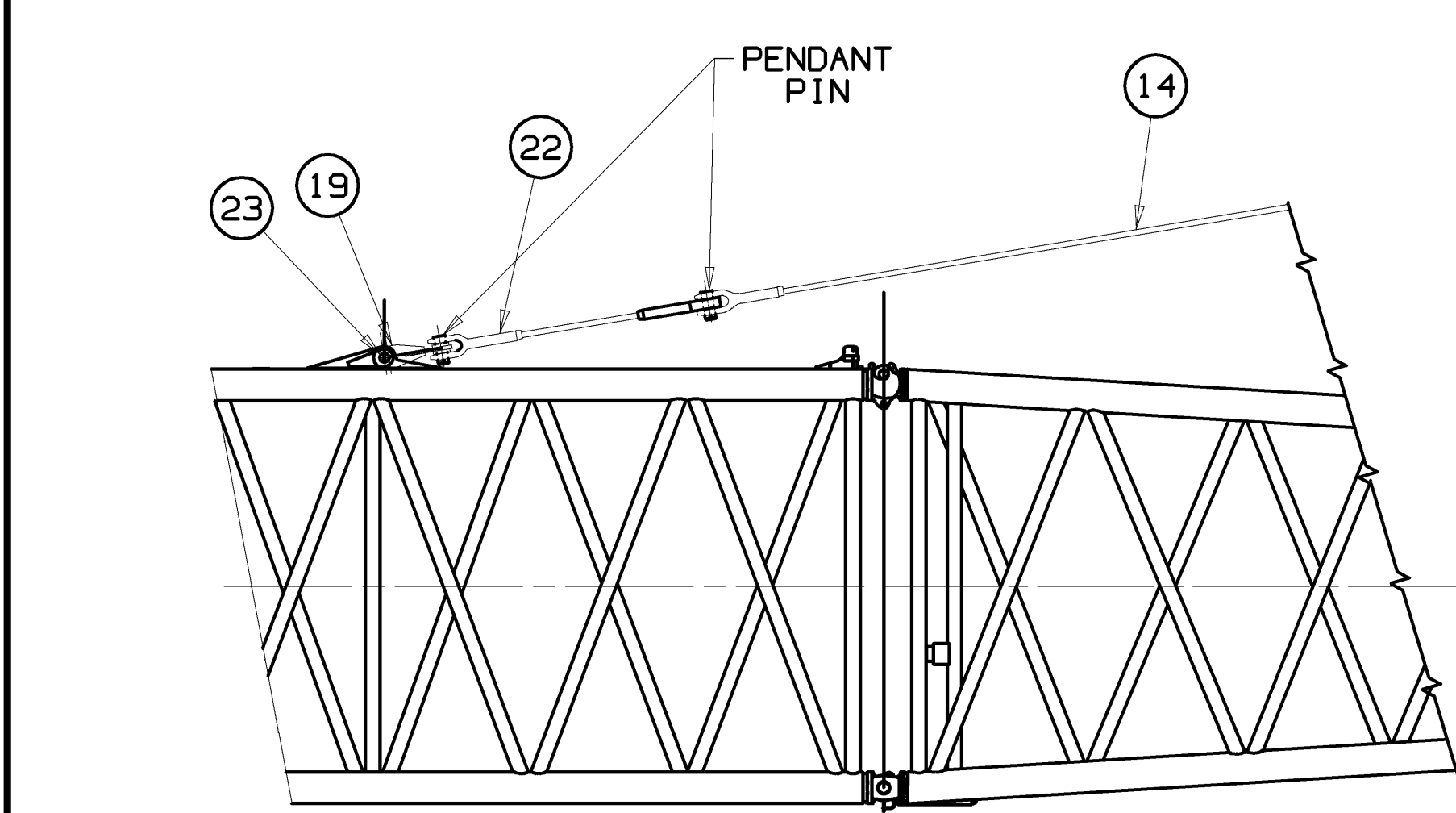


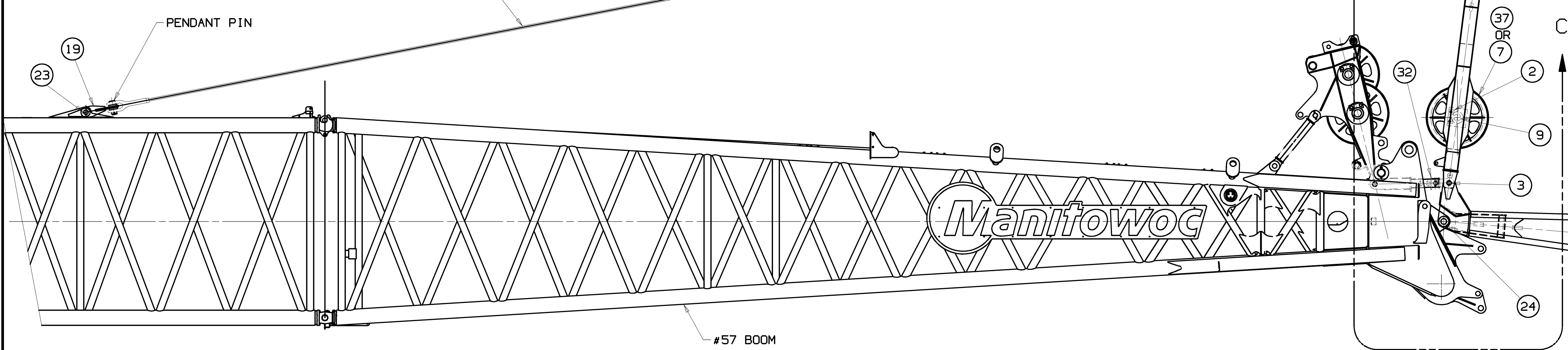
VIEW F-F
SCALE: 1.50=1FT



15° JIB ANGLE



25° JIB ANGLE



30 FT. (9.15M) JIB WITH
5° JIB ANGLE SHOWN

REQUIRED FOR VARIOUS JIB LENGTHS (S)									
DESCRIPTION									
JIB LENGTH		INSERT 10 FT-00 (3.05 M) ITEM 38	INSERT 20 FT-00 (6.10 M) ITEM 45	PENDANT 9 FT-6.00 (2.89 M) ITEM 39	PENDANT 19 FT-00 (5.79 M) ITEM 46	PIN JIB JOINT ITEM 40 OR 47	TIMBER ITEM 41 OR 48	BOLT ITEM 42 OR 49	WASHER ITEM 43 OR 50
FEET	METERS								NUT ITEM 44 OR 51
40	12.19	1	0	2	0	4	1	4	8
50	15.24	OR 2	0	4	0	8	2	8	16
		0	1	0	2	4			8
60	18.29	OR 1	1	2	0	12	3	12	24
		3	0	6	0	8			12
70	21.33	OR 0	2	0	4	8	4	16	32
		2	1	4	2	12			16
80	24.38	OR 1	2	2	4	12	5	20	40
		3	1	6	2	16			20

REQUIRED FOR VARIOUS JIB ANGLES				
DESCRIPTION				
JIB ANGLE	PENDANT 44 FT-7.00 (13.59 M) ITEM 14	PENDANT 4 FT-9.00 (1.42 M) ITEM 22	LINK 28.00 (711 mm) ITEM 18	PIN ITEM 35
5°	2	0	0	0
15°	2	0	2	2
25°	2	2	0	0

OPTION 1 - WITH BUTTON SOCKET		
100	3PIN COTTER .375 x 4.00	562152
101	2WASHER FLAT 2.25.0.193 PLN	709592
102	1PIN COTTER 2 HOLE 2.25 DIA X 3.84 LG	A07843
103	1UNIV WR ANCHOR JOINT ASSY #57 BOOM, 26MM ROPE	A09843
104	1SOCKET BUTTON 22-26MM (.88-1.00IN) WIRE ROPE	A11040
105	1UNIV WR ANCHOR JOINT ASSY #57 BOOM, 26MM ROPE	A11069
106	1WEIGHT BALL 594 KG, 59 MM DIA	A11661
107	1LOAD CELL LINK 35K WIRELESS	A09683
108	2PIN 1 HOLE W/HD 2.50 DIA X 4.38 LG	A08665
109	1LINK UNIV ANCHOR JOINT TO LOAD CELL	A17448
OPTION 2 - WITH WEDGE SOCKET		
200	1WEDGE SOCKET FOR 1.125 DIA WIRE ROPE	075298
201	1PIN 1 HOLE W/HD 1.88 DIA X 3.84 LG	075368
202	1WEDGE	075447
203	1CLIP 1.00 WIRE ROPE	349291
204	1PIN COTTER .375 x 3.00	562150
205	3PIN COTTER .375 x 4.00	562152
206	2WASHER FLAT 2.25.0.193 PLN	709592
207	1PIN COTTER 2 HOLE 2.25 DIA X 3.84 LG	A07843
208	1UNIV WR ANCHOR JOINT ASSY #57 BOOM, 26MM ROPE	A11069
209	1UNIV WR ANCHOR JOINT ASSY #57 BOOM, 26MM ROPE	A11070
210	1WEIGHT BALL 594 KG, 59 MM DIA	A11661
211	1LOAD CELL LINK 35K WIRELESS	A09683
212	2PIN 1 HOLE W/HD 2.50 DIA X 4.38 LG	A08665
213	1LINK UNIV ANCHOR JOINT TO LOAD CELL	A17448
OPTION 3 - WITH TERMINATOR WEDGE SOCKET		
300	3PIN COTTER .375 x 4.00	562152
301	1WEDGE SOCKET	646246
302	2WASHER FLAT 2.25.0.193 PLN	709592
303	1PIN COTTER 2 HOLE 2.25 DIA X 3.84 LG	A07843
304	1UNIV WR ANCHOR JOINT ASSY #57 BOOM, 26MM ROPE	A09843
305	1UNIV WR ANCHOR JOINT ASSY #57 BOOM, 26MM ROPE	A11069
306	1WEIGHT BALL 594 KG, 59 MM DIA	A11661
307	1LOAD CELL LINK 35K WIRELESS	A09683
308	2PIN 1 HOLE W/HD 2.50 DIA X 4.38 LG	A08665
309	1LINK UNIV ANCHOR JOINT TO LOAD CELL	A17448
OPTION 4 - WITH WIRELESS LOAD CELL LINK		
400	1LOAD CELL LINK 35K WIRELESS	A09683
401	1PIN COTTER .375 x 4.00	562152
402	1PIN 1 HOLE W/HD 2.50 DIA X 4.38 LG	A08665

BILL OF MATERIAL					ASSEMBLIES USED ON
ITEM NO. REQ'D	SEC- TION	DESCRIPTION	QTY REQ'D	MATERIAL	
4386-0000 #134 JIB ASSEMBLY					
1					
2	2	KEEPER		169810	
3	2	PIN		170851	
4	1	JIB TOP 15 FT-0 (4.57 M)		A018106	
5	1	STRUT 12 FT-6 (3.81 M)		A017977	
6	1	JIB BUTT 15 FT-0 (4.57 M)		177054	
7	1	SHEAVE ASSEMBLY		176799	
8	2	PIN		75052	
9	1	PIN		177219	
10	4	PIN		76225	
11	1	UNIVERSAL WIRE ROPE ANCHOR JOINT		90317	
12	1	JIB POINT SHAFT ASSEMBLY		90318	
13	1	GUARD WIRE ROPE		A020667	
14	2	PENDANT 44 FT-7 (13.59 M)		277432	
15	2	LINK		177295	
16	1	LINK		177296	
17	2	LINK		177297	
18	2	LINK 28.00 LONG (711 mm)		177298	
19	2	LINK		A10099	
20	1	SPREADER		A10100	
21	4	PIN, SAFETY SNAP, .25 DIA.		5638236	
22	2	PENDANT 4FT 8.00 (1.42 M)		277431	
23	2	PIN		73045	
24	2	PIN		177397	
25	2	PENDANT 30 FT-9.00 (9.37 M)		277430	
26	2	RUBBER BUMPER		285220	
27	1	GUARD WIRE ROPE		A023706	
28	4	SCR HEX .375-16UNC-2A X 1.25 GR5		612456	
29	4	NUT HEX .375-16 UNC-2B		546054	
30	4	LOCKWASHER .375		710304	
31	2	CLAMP		177473	
32	1	JIB STOP ASSEMBLY		179332	
33	1	TIMBER 27.00 LG X 3.50 W		8101767	
34	2	PIN		177301	
35	4	PIN		177302	
36	2	PIN		177303	
37	1	SHEAVE WIRE ROPE ASSY		81007542	
49	4	HHCS 5/8-11UNC X 5.00 GR 5		612685	
50	8	F WASHER SHIM 5/8 ST F436		709747	
51	4	HEX LOCK NUT 5/8-11UNC Gr5.2		7660201601	
NO. REQUIRED FOR THE FOLLOWING ITEMS ARE IN THE JIB LENGTH TABLE					
38		INSERT - 10 FT (3.05 M)		32938	
39		PENDANT - 9 FT-6.00 (2.89 M)		276729	
40		PIN - JIB JOINT		76225	
41		TIMBER 27.00 LG X 3.50 W		8101767	
42		HHCS 5/8-11UNC X 5.00 GR 5		612685	
43		F WASHER SHIM 5/8 ST F436		709747	
44		HEX LOCK NUT 5/8-11UNC Gr5.2		7660201601	
45		INSERT - 20 FT (6.10 M)		176938	
46		PENDANT - 19 FT-00 (5.79 M)		277422	
47		PIN - JIB POINT		76225	
48		TIMBER		192028	

OR-

AD

R

AMAJ

AG

AH

AE

AK

AL

AM

AN

REVISONS

09-12-06 JRK
SHADED SHEET
BOLD ADDED
OPTIONS

11-20-08 BDR
DELETED
ALJURY WAS 4
LIMIN OPTION
SHADED SHEET
03-18-09 MER
ITEM WAS
SHT 1 OF 2
UPDATED
VIEW
MOVED VIEW
TO SHT 3

08-23-11 RDA
AABAC ADDED
COLUMNS

AD WAS 177221
A WAS 192028
AFAGAH-AKAL
ADDED

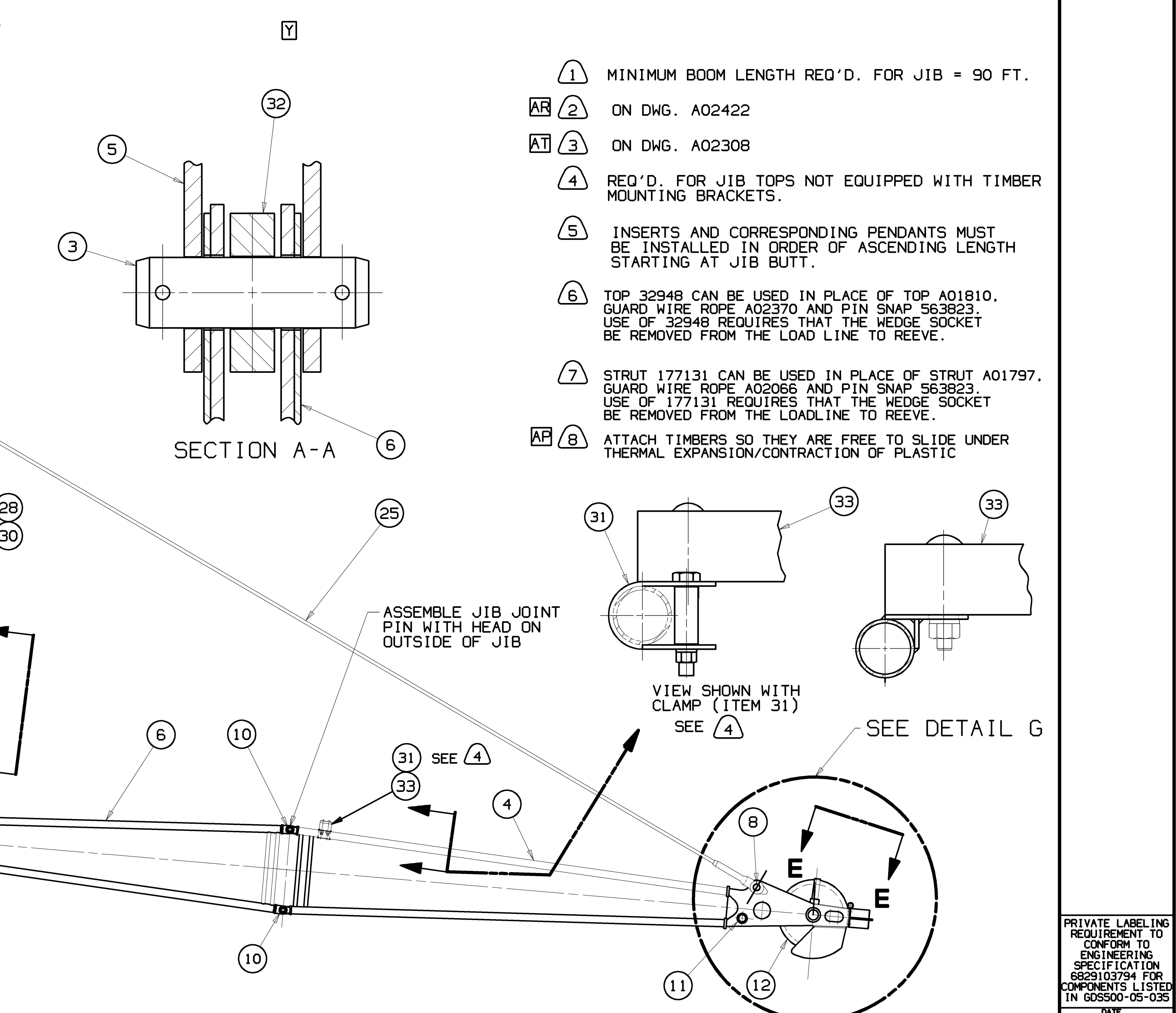
MAF REMOVED
AD WAS 74958
A WAS 139117
10-18-11 RDA
A WAS
715204050

QTY. NO.

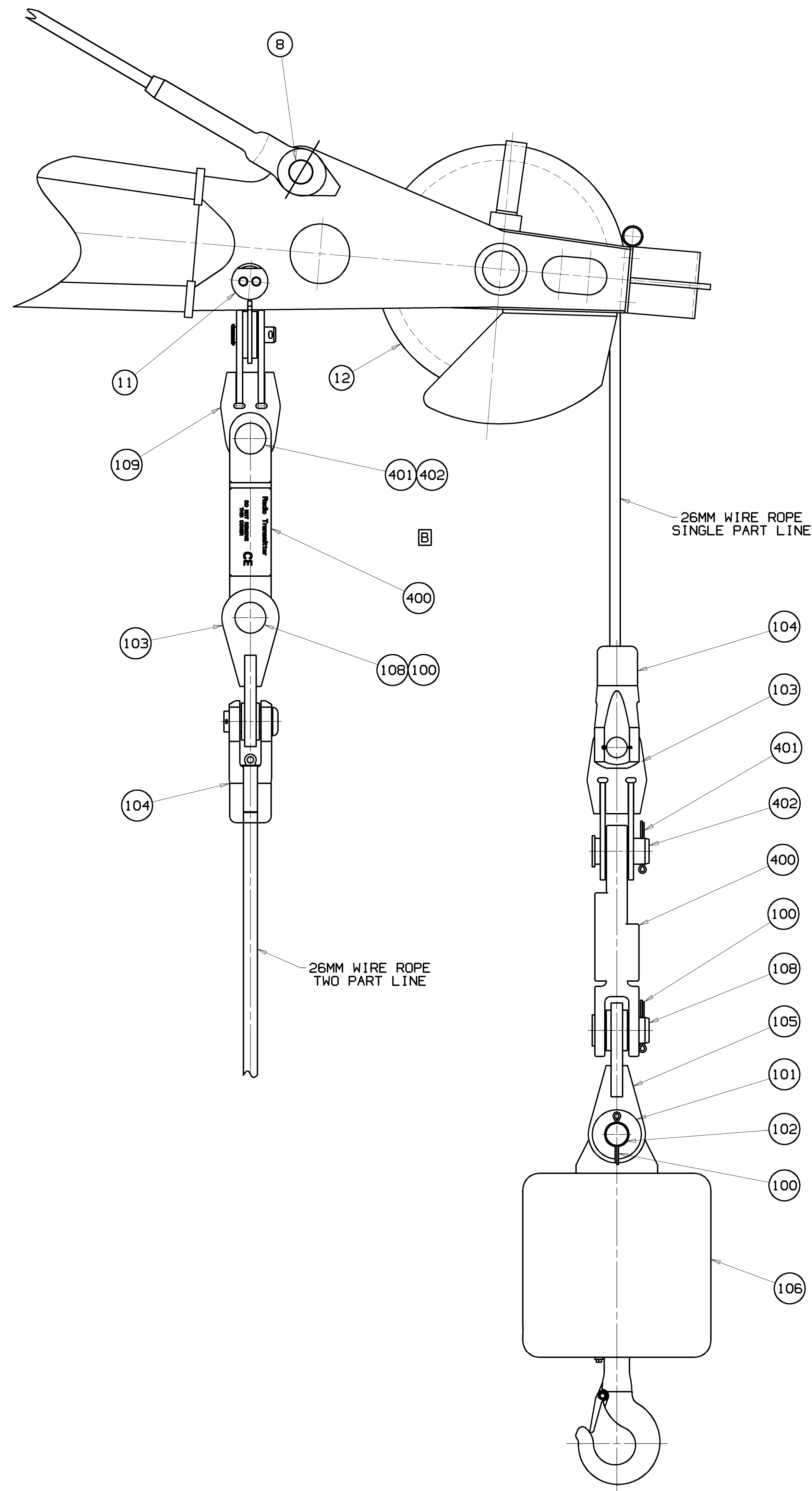
A10098

SHT 1 OF 9

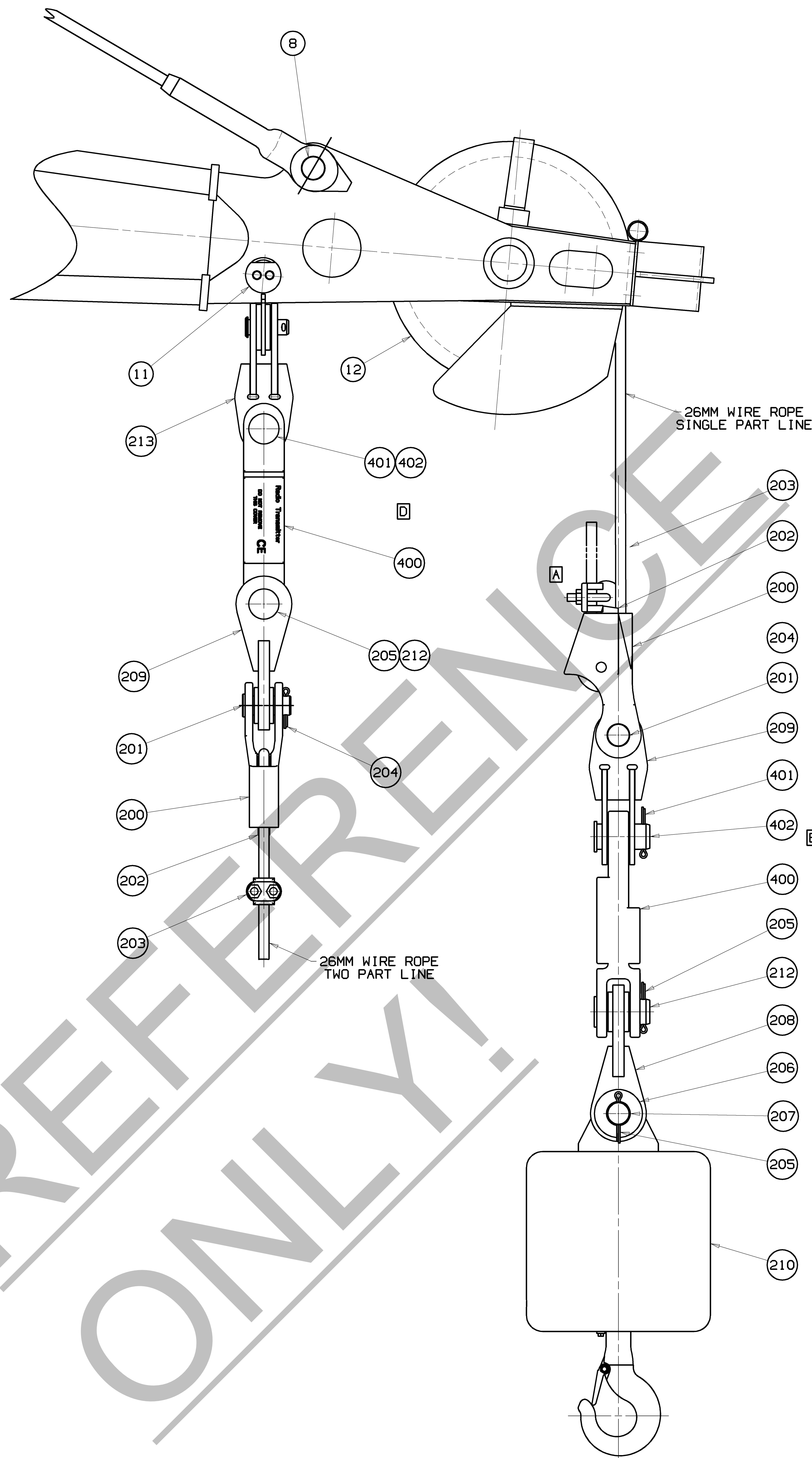
- 1 MINIMUM BOOM LENGTH REQ'D. FOR JIB = 90 FT.
- 2 ON DWG. A02422
- 3 ON DWG. A02308
- 4 REQ'D. FOR JIB TOPS NOT EQUIPPED WITH TIMBER MOUNTING BRACKETS.
- 5 INSERTS AND CORRESPONDING PENDANTS MUST BE INSTALLED IN ORDER OF ASCENDING LENGTH STARTING AT JIB BUTT.
- 6 TOP 32948 CAN BE USED IN PLACE OF TOP A01810. GUARD WIRE ROPE A02370 AND PIN SNAP 563823. USE OF 32948 REQUIRES THAT THE WEDGE SOCKET BE REMOVED FROM THE LOAD LINE TO REEVE.
- 7 STRUT 177131 CAN BE USED IN PLACE OF STRUT A01797. GUARD WIRE ROPE A02066 AND PIN SNAP 563823. USE OF 177131 REQUIRES THAT THE WEDGE SOCKET BE REMOVED FROM THE LOADLINE TO REEVE.
- 8 ATTACH TIMBERS SO THEY ARE FREE TO SLIDE UNDER THERMAL EXPANSION/CONTRACTION OF PLASTIC



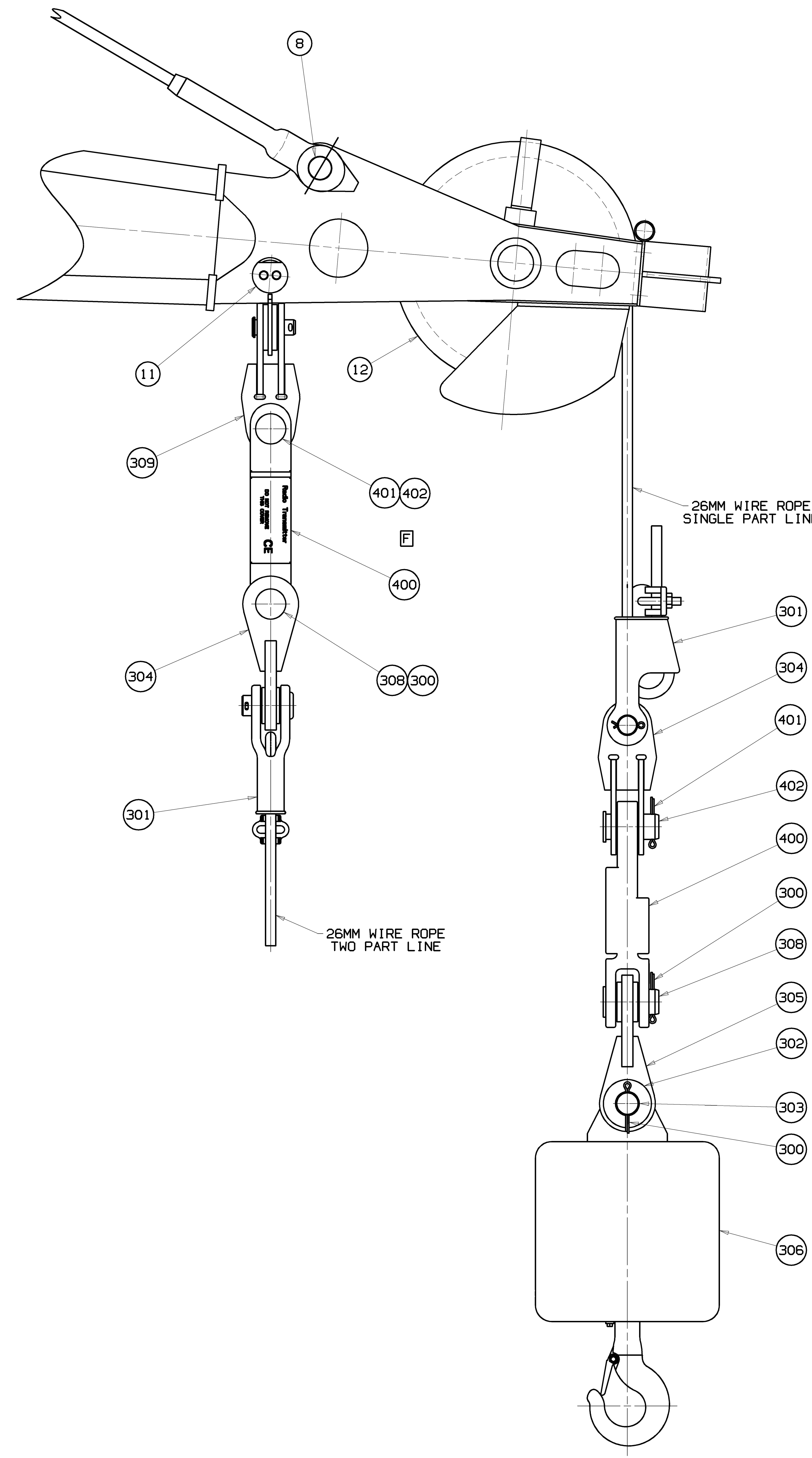
THIS PRINT REMAINS THE PROPERTY OF MANITOWOC CRANES, INC. IT IS LOANED, SUBJECT TO RETURN UPON DEMAND, AND ON EXPRESS CONDITION THAT IT IS NOT TO BE COPIED OR USED DIRECTLY OR INDIRECTLY IN ANY MANNER WHATSOEVER DETRIMENTAL TO OUR INTERESTS.		TOLERANCE UNLESS OTHERWISE SPECIFIED: DECIMAL PLACES (1) PLACE 0.0 ±.12 ±.18 ±.05 (2) PLACE 0.00 ±.06 ±.12 ±.015 (3) PLACE 0.000 ±.006 ±.005 ±.002	MANITOWOC CRANES, INC. JIB FIXED ASSY #134 FOR #57 BOOM	DATE 04-09-04 PATTERN NO.
---------------------------------------------------------------------------------------------------------------------------------------------------------------------------------------------------------------------------------------------------	--	----------------------------------------------------------------------------------------------------------------------------------------------------------------	---------------------------------------------------------------	---------------------------------



DETAIL G
OPTION 1 - WITH BUTTON SOCKET
SCALE 2=1FT



DETAIL G
OPTION 2 - WITH WEDGE SOCKET
SCALE 2=1FT



DETAIL G
OPTION 3 - WITH TERMINATOR WEDGE SOCKET
SCALE 2=1FT

BILL OF MATERIAL			
ITEM NO.	DESCRIPTION	QUANTITY	MATERIAL

ASSEMBLY USED ON

REVISIONS
04-11-07 TRO
A CORRECTED
PICTURE OF
DEAD END
TERMINATION
11-20-08 BOR
DISCIPULATED
FIG BALLOONS
03-16-09 MER
H WAS
SHT 2 OF 2

ENG. NO.
A10098
SHT 2 OF 3

THIS PRINT REMAINS THE PROPERTY OF MANITOWOC CRANES, INC. ALL INFORMATION CONTAINED THEREIN IS CONFIDENTIAL. IT IS LOANED, SUBJECT TO RETURN UPON DEMAND, AND ON EXPRESS CONDITION THAT IT IS NOT TO BE COPIED OR USED DIRECTLY OR INDIRECTLY IN ANY MANNER DETRIMENTAL TO OUR INTERESTS.	TOLERANCE UNLESS OTHERWISE SPECIFIED										SCALE 1"=38'-11"		Manitowoc Cranes, Inc.		PATTERN NO.	
	DECIMAL PLACES			FABRICATION			MACHINING				DR CDC		Manitowoc, Wisconsin		JIB FIXED ASSY	
	(1) PLACE	0.0	±.12	±.18	±.03	(1) PLACE	0.0	±.12	±.18	±.015	APPLICABLE TO ALL DIMENSIONS	OR CDC	MODEL 15000		#134 FOR #57 BOOM	
	(2) PLACE	0.00	±.06	±.09	±.012	(2) PLACE	0.00	±.06	±.09	±.005	APPLICABLE TO ALL DIMENSIONS	APP JL				
	(3) PLACE	0.000	±.005	±.008	±.001	(3) PLACE	0.000	±.005	±.008	±.0005	APPLICABLE TO ALL DIMENSIONS					
	ANGLES			ANGLES			ANGLES									
	±1°			±1°			±1°									
	±30°			±30°			±30°									
	±45°			±45°			±45°									
	±60°			±60°			±60°									
															MAN. NO.	
															A10098	
															11/18/02 0.00.2	

BILL OF MATERIAL					ASSEMBLIES USED ON
ITEM NO.	REV.	DESCRIPTION	QUANTITY	MATERIAL	DATE

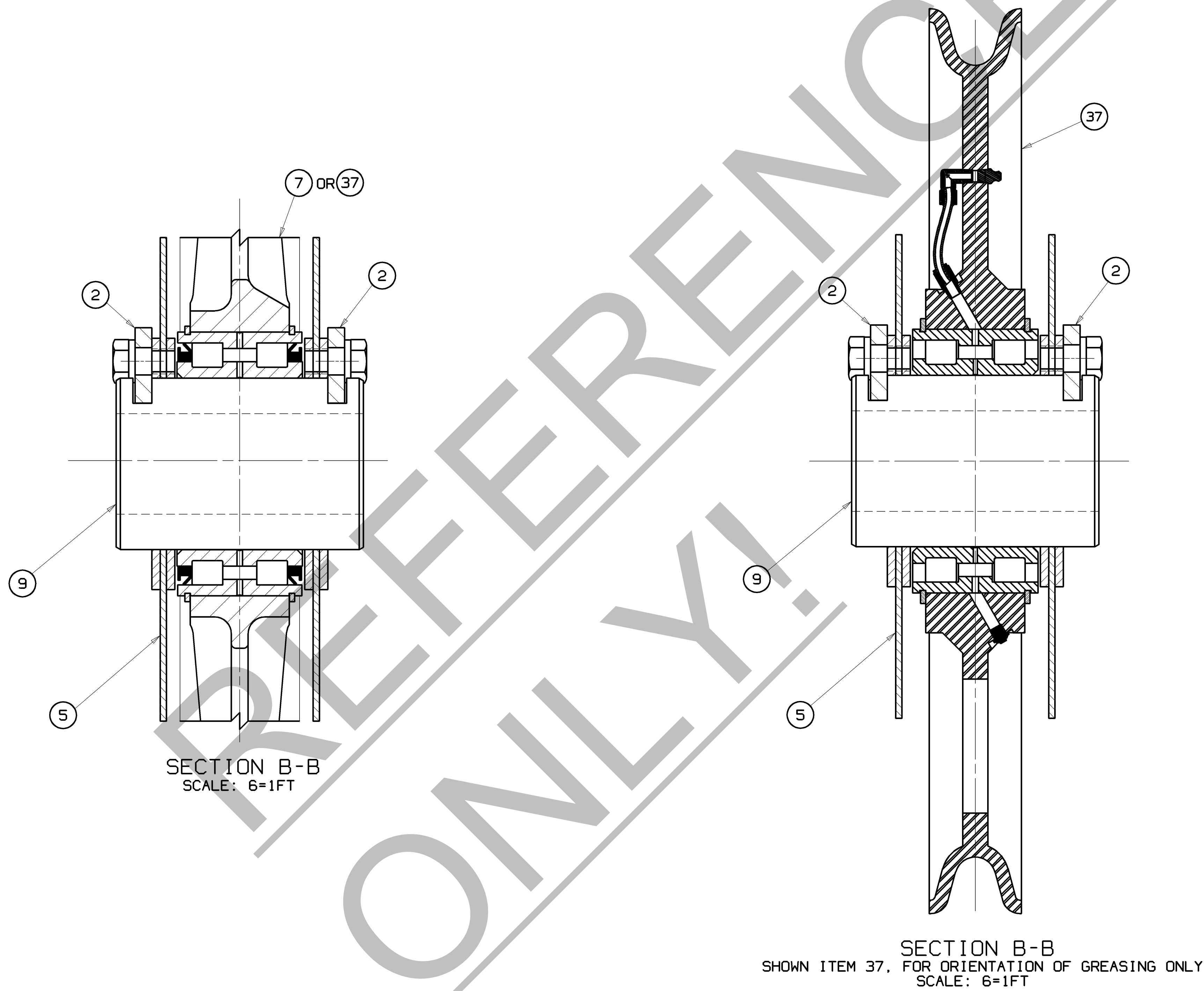
REVISIONS

DWG. NO.
A10098
SHT 3 OF 3

PRIVATE LABELING
REQUIREMENT TO
CONFORM TO
ENGINEERING
SPECIFICATION
6829103794 FOR
COMPONENTS LISTED
IN 682900-05-026

DATE
03-16-09
PATTERN NO.

DWG. NO.
A10098
SHT 3 OF 3



THIS PRINT REMAINS THE PROPERTY OF MANITOWOC CRANES, INC. ALL INFORMATION CONTAINED THEREIN IS CONFIDENTIAL. IT IS LOANED, SUBJECT TO RETURN UPON DEMAND, AND ON EXPRESS CONDITION THAT IT IS NOT TO BE COPIED OR USED DIRECTLY OR INDIRECTLY IN ANY MANNER THAT WOULD BE DETRIMENTAL TO OUR INTERESTS.				TOLERANCE UNLESS OTHERWISE SPECIFIED				SCALE 1/32"=1'-0"				Manitowoc Cranes, Inc. Manitowoc, Wisconsin			
DECIMAL PLACES	FABRICATION	MACHINING	WELDING	DECIMAL PLACES	FABRICATION	MACHINING	WELDING	DR. MER	MODEL 15000	JIB FIXED ASSY					
(1) PLACE 0.0	±.12	±.18	±.05	(1) PLACE 0.0	±.12	±.18	±.05	CK. MER		#134 FOR #57 BOOM					
(2) PLACE 0.00	±.06	±.12	±.015	(2) PLACE 0.00	±.06	±.12	±.015	APP. PMP							
(3) PLACE 0.000	±.003	±.005	±.001	(3) PLACE 0.000	±.003	±.005	±.001								
ANGLES	±1°-30'	±0°-30'	±0°-30'	ANGLES	±1°-30'	±0°-30'	±0°-30'								