

LUFFING JIB HOIST REEVING DIAGRAM FOR 10 PART LINE SEE (31)

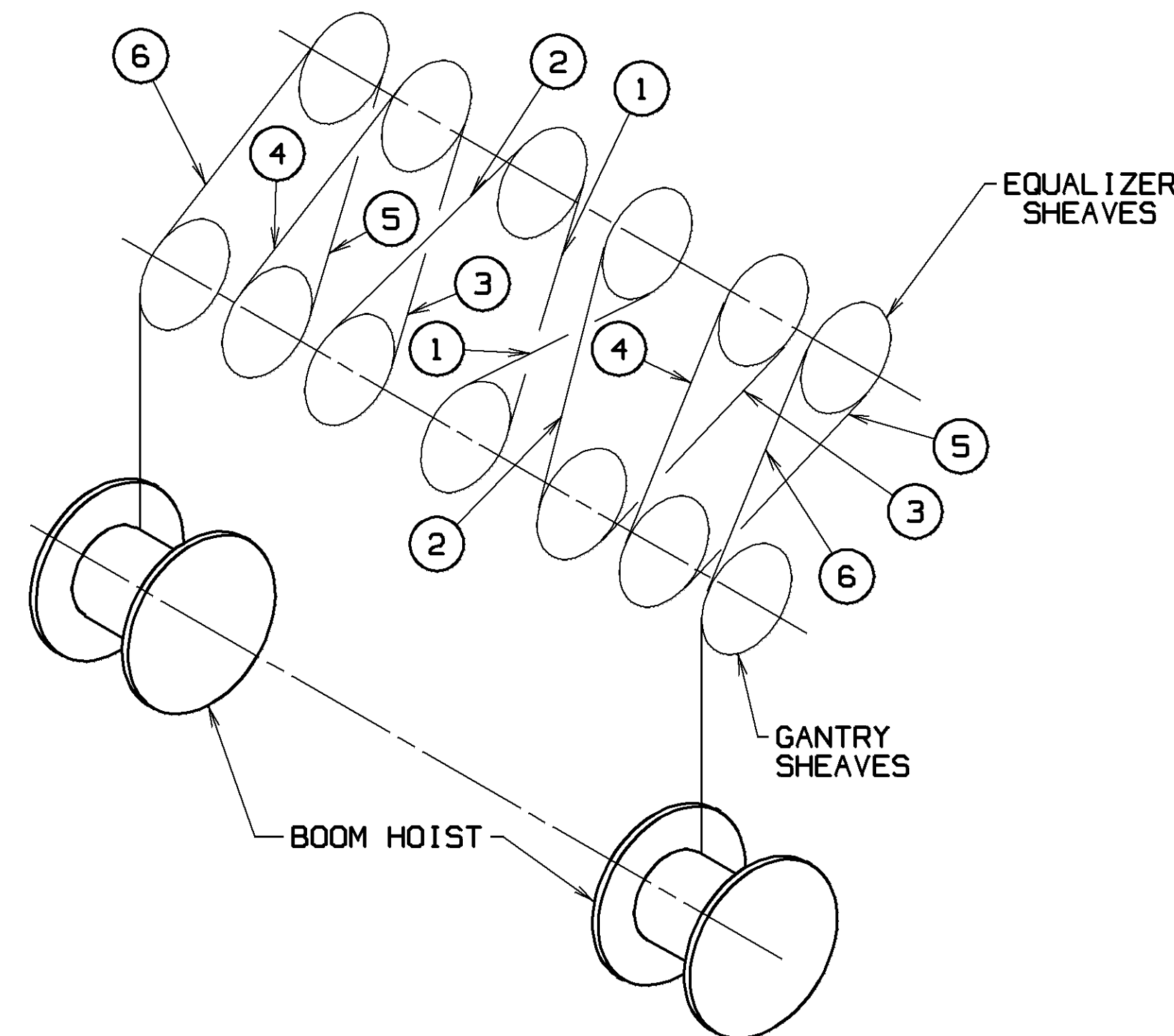
USE WHEN A SAFETY FACTOR OF 6.0 OR LESS IS REQUIRED. 1100 FEET (335.3 M) OF .875" (22mm) CASAR SUPERPLAST (719354) - B.S. 105,700 LBS. (47,940 kg)

OR ALTERNATE WIRE ROPE

USE WHEN A SAFETY FACTOR OF 5.0 OR LESS IS REQUIRED. 1100 FEET (335.3 M) OF .875" (22mm) CASAR SUPERPLAST (719358) - B.S. 96,100 LBS. (43,590 kg)

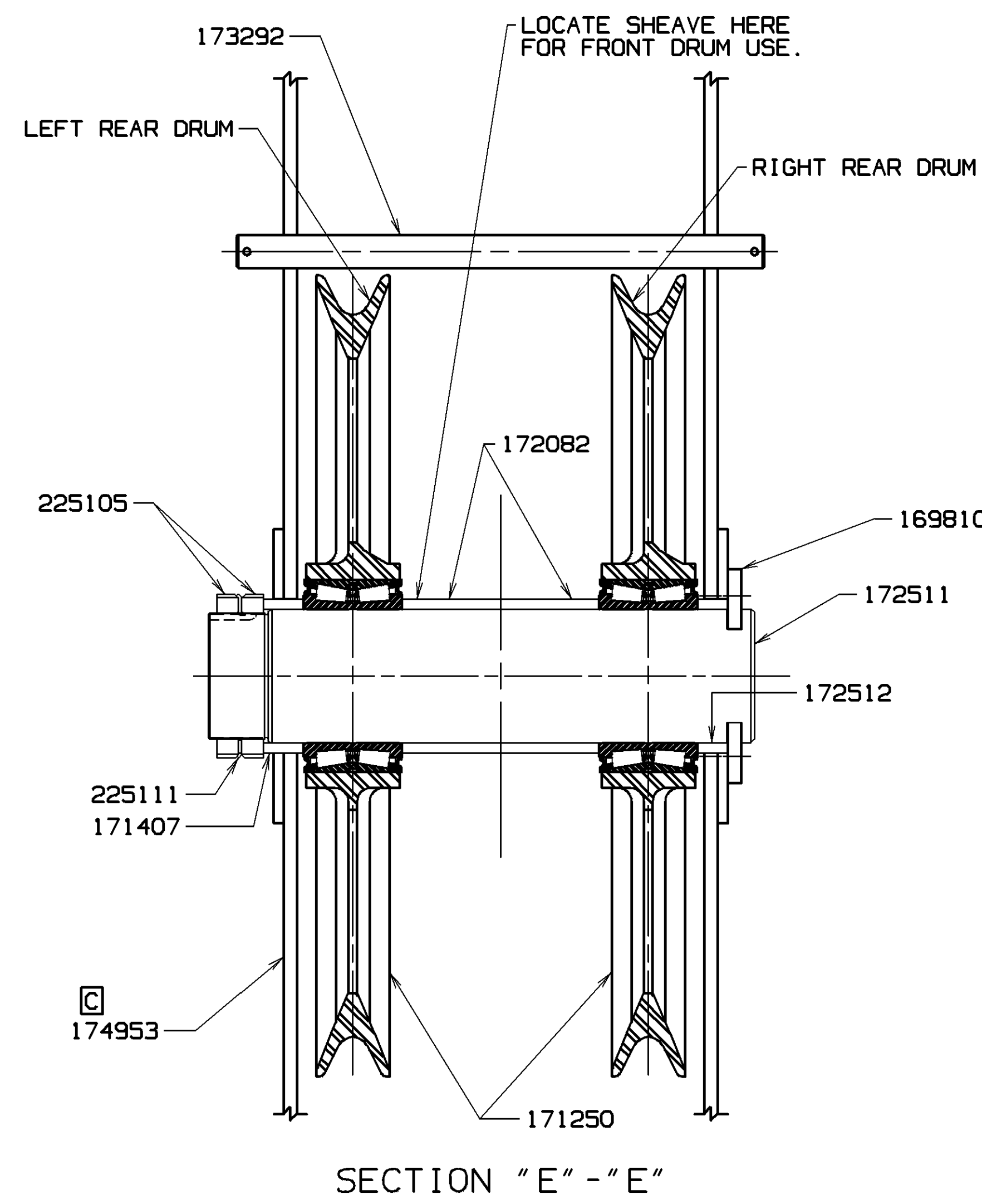
OR ALTERNATE WIRE ROPE

USE WHEN A SAFETY FACTOR OF 4.5 OR LESS IS REQUIRED. 1100 FEET (335.3 M) OF .875" (22mm) BRITISH DYFORM 6/8 (719365) - B.S. 89,500 LBS. (40,600 kg)

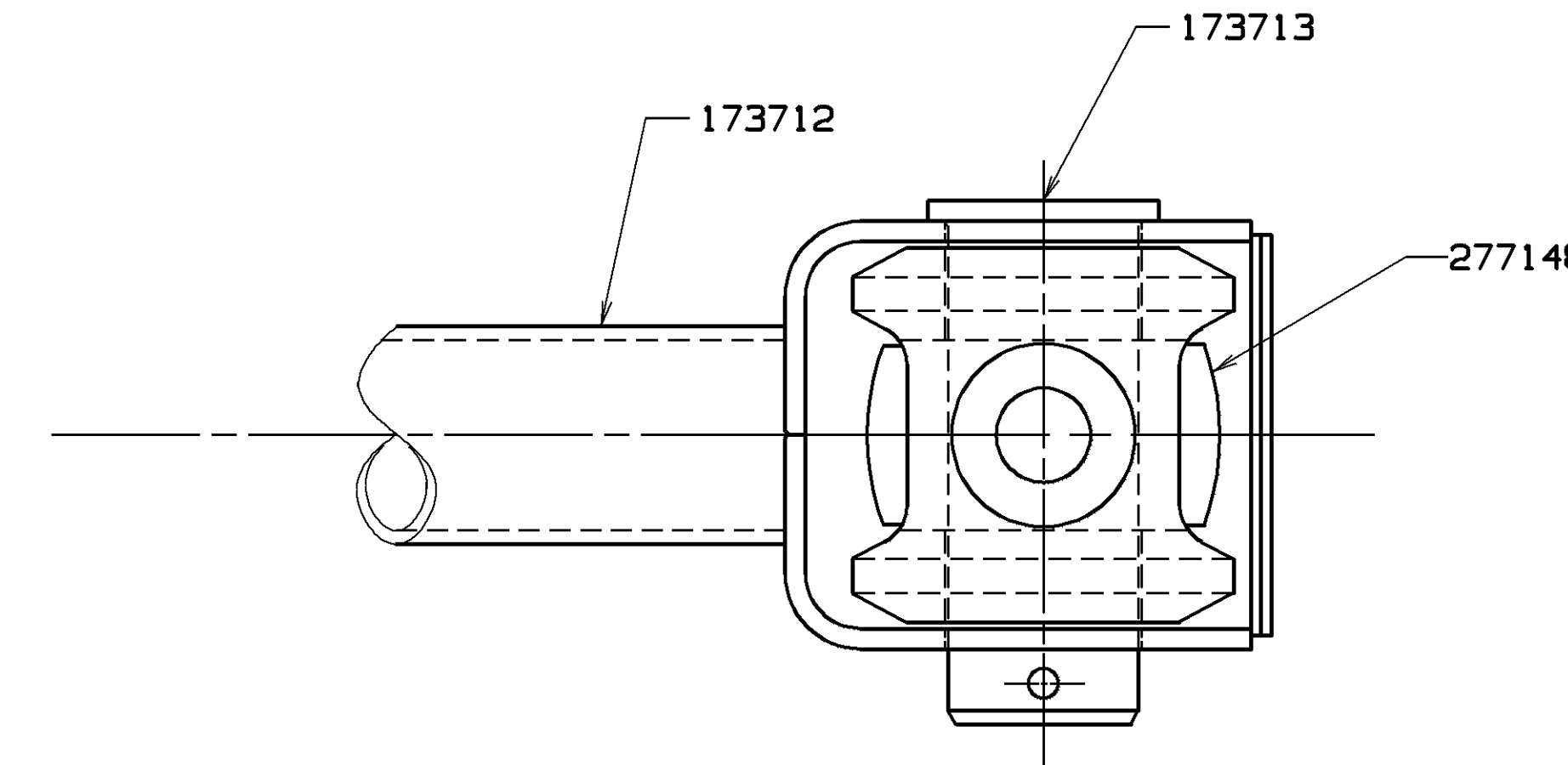


BOOM HOIST REEVING DIAGRAM FOR 12 PART LINE

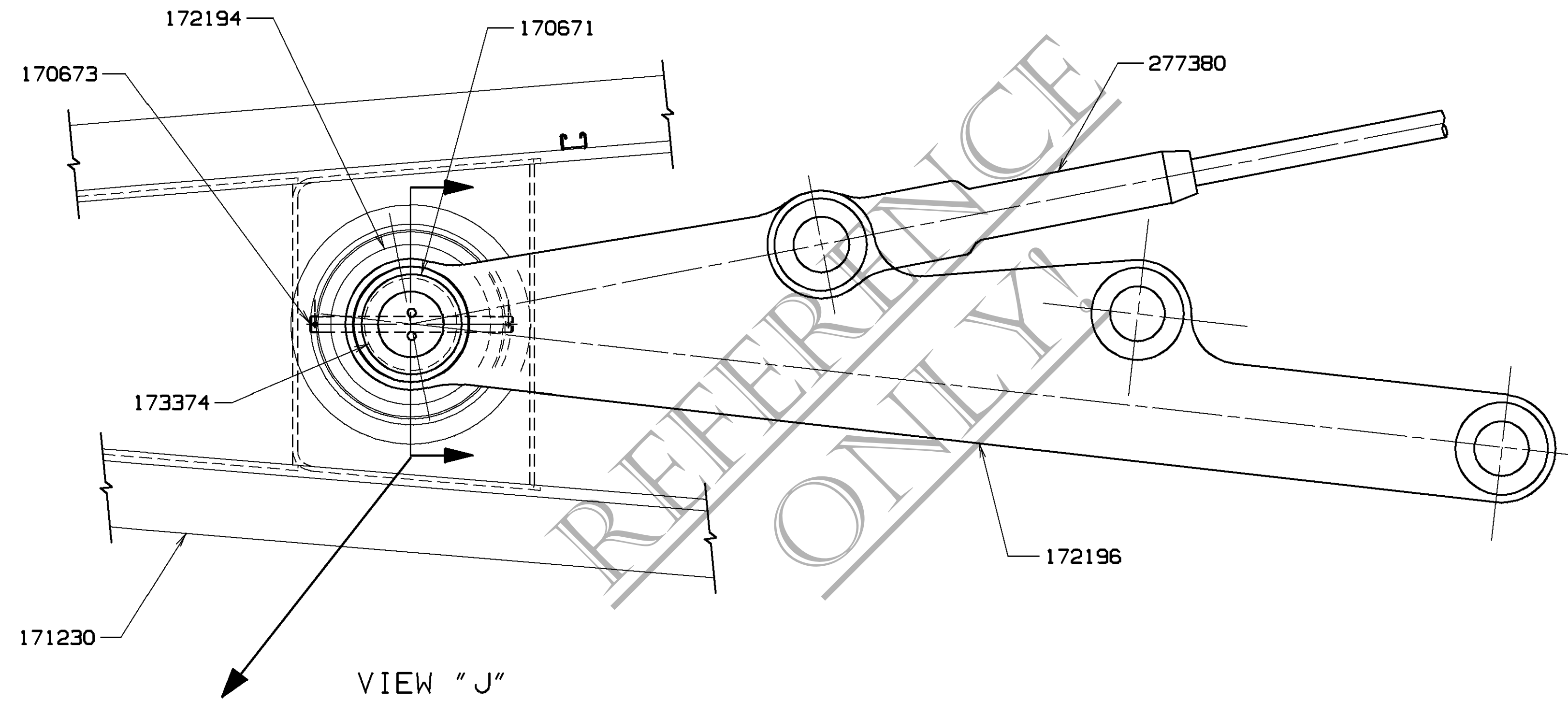
USE WHEN A SAFETY FACTOR OF 6.0 OR LESS IS REQUIRED. 975 FEET (297.2 M) OF 1.00 IN. (25mm) CASAR SUPERPLAST. (719372) B.S. 137,200 LBS. (62,230 kg)



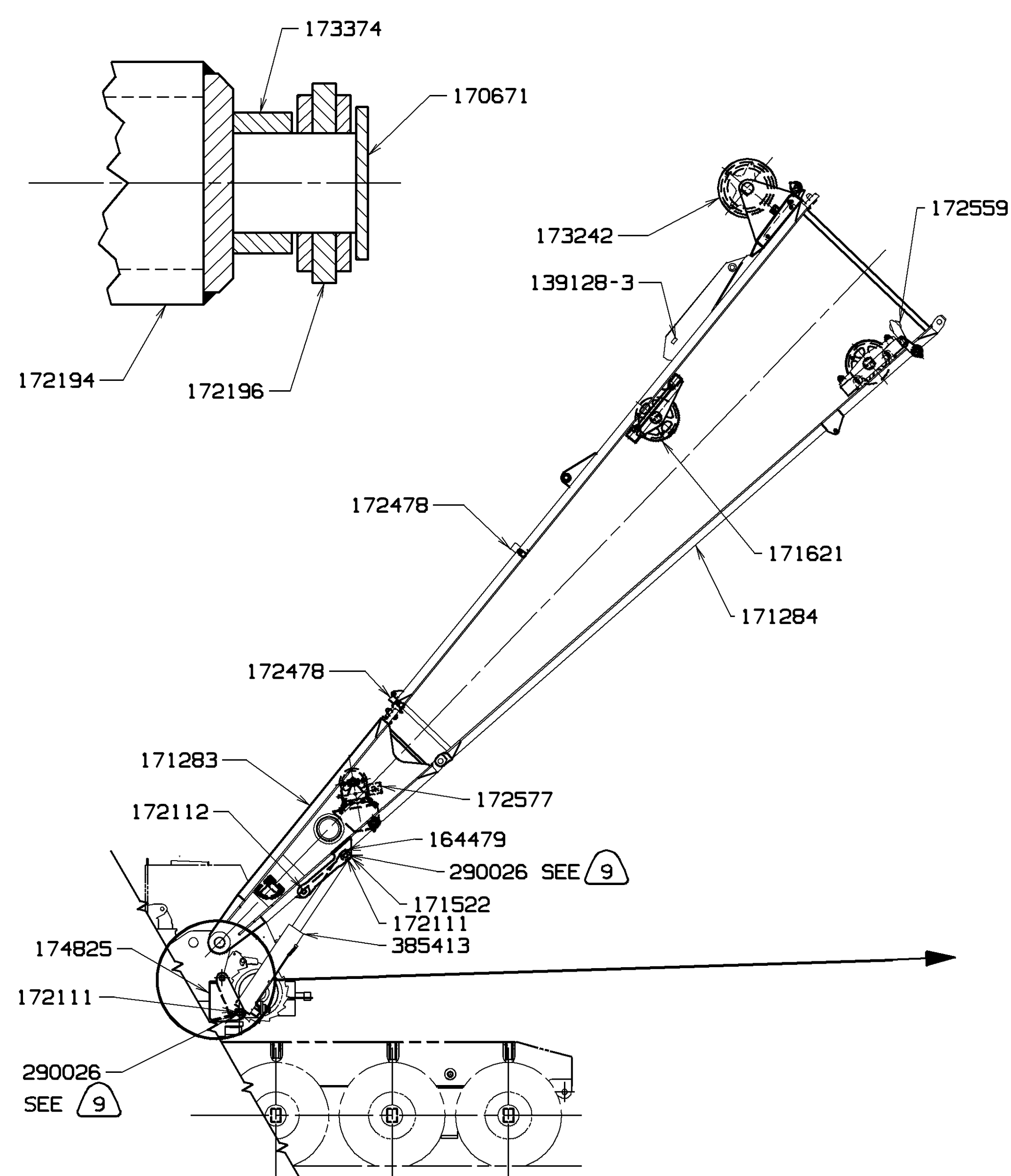
SECTION "E" - "E"



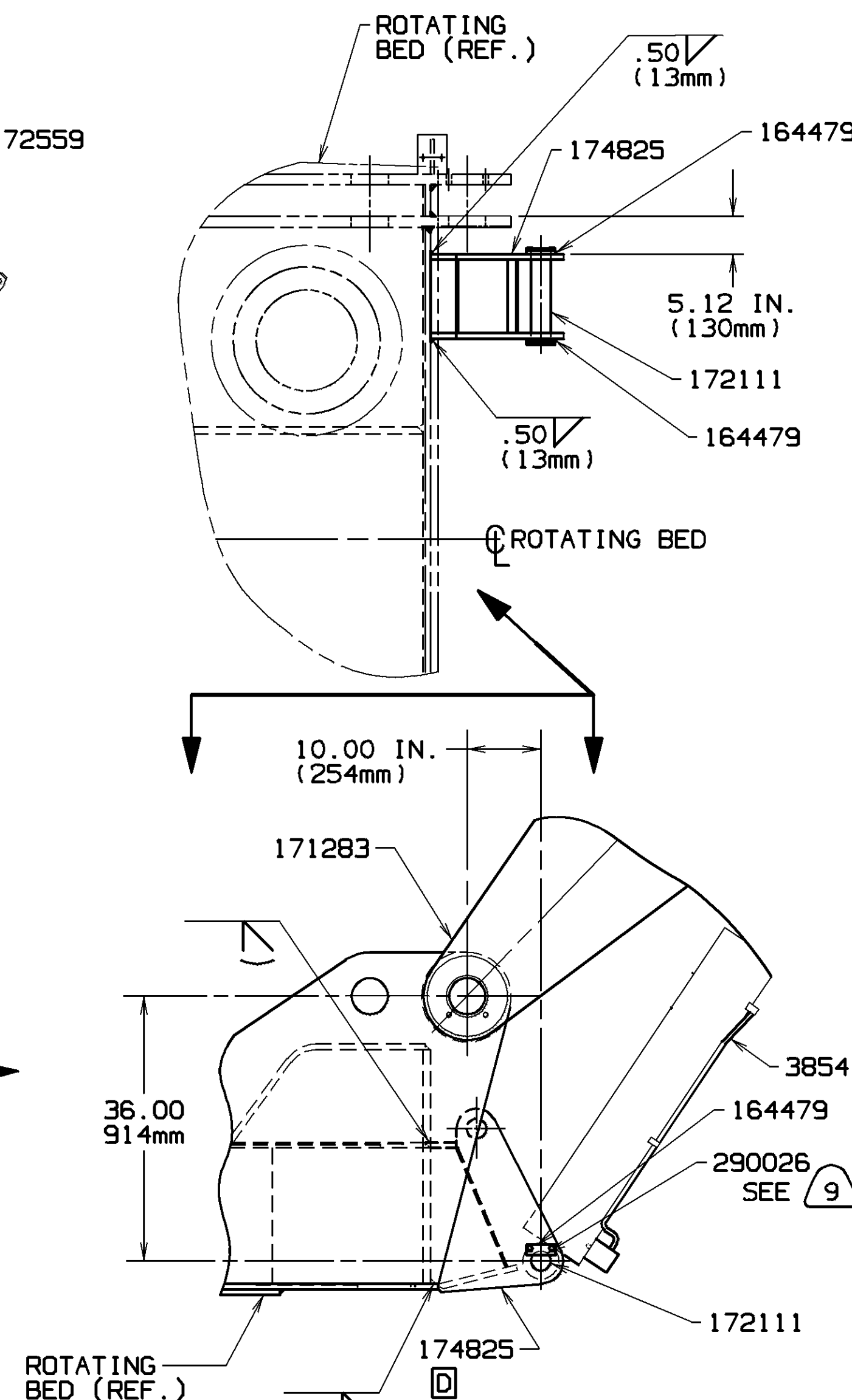
VIEW "P" - "P"



VIEW "J"



VIEW SHOWING 2-PIECE BUTT COMBINATION



ROTATING BED (REF.)

BOOM HANDLING INSTRUCTIONS

TRAVEL SPEED NOT TO EXCEED 1/2 MPH (.80 km/h)  
BOOM ANGLE AT 10° OR LESS.

GANTRY POSITION	MAX. LENGTH OF BOOM HANDLED		BOOM MAKE UP	BOOM CONDITIONS OR LIMITATIONS
	FEET	METERS		
DOWN	40	12.19	BUTT ONLY	EQUALIZER PINNED TO RAILS
UP	120	36.6	BUTT & INSERTS	EQUALIZER PINNED TO RAILS. CAN CANTILEVER 80 FT. (24.4 M) OF INSERTS.

SEE VIEW Q ON SHT. 4.

BILL OF MATERIAL		ASSEMBLIES USED ON
ITEM NO.	DESCRIPTION	
(1)	1.125 (29mm) WIRE ROPE.	
(2)	USED FOR GANTRY TIE DOWN.	
(3)	ON DNG. 142723	
(4)	THE COMBINATION OF BUTT SECTIONS 171283 AND 171284 REPLACE 40 FT. (12.19 M) BUTT 171230.	
(5)	ON DNG. 73026	
(6)	REQUIRED FOR CRAWLER HANDLING.	
(7)	SEE JIB STOP ASSEMBLY FOR JIB STOP ERECTION PROCEDURE.	
(8)	REQ'D. FOR BOOM BUTT HANDLING: CAN BE USED WITH 2-PIECE BOOM BUTT ONLY. MAX. COMBINATION THAT CAN BE HANDLED WITH CYLINDER 385413 IS: BUTT SECTIONS 171283 & 171284; ROPE GUIDES 173242, 172559 & 171621; RIGGING WINCH 172577; EQUALIZER 172478; BOOM STOPS 170474 REF. AND 2 PARTS OF 1.125 (29mm) WIRE ROPE (FOR EQUALIZER HANDLING). CYLINDER MUST BE FULLY RETRACTED FOR CRANE OPERATION.	
(9)	INSTALL 2 BUSHINGS 290026 (1 EACH SIDE) IN LOWER PIN EYE AND 2 (1 EACH SIDE) IN UPPER PIN EYE OF CYLINDER 385413. BUSHINGS TO BE FLUSH WITH OUTSIDE FACE OF PIN EYE.	
(10)	PIN IN PLACE ONLY DURING EQUALIZER RELOCATION FROM GANTRY STORAGE TO BOOM BUTT EQUALIZER RAIL. PIN TO BE STORED FOR NORMAL CRANE OPERATION.	
(11)	REQ'D. FOR 2 PIECE BOOM BUTT. USE LOCKTITE 242 OR EQUIVALENT ON MOUNTING SCR. THDS. AT ASSEMBLY.	
(12)	INSTALL WITH HEAD ON BOTTOM. WIRE END PLATE SCREWS TOGETHER.	
(13)	LOCATE AS REQ'D SEE SECTION "E" - "E".	
(14)	.875 (22mm) WIRE ROPE.	
(15)	SHOWN IN THE FORMAT: TOTAL PENDANTS REQ'D ( BOOM PENDANTS REQ'D / JIB BACKSTAY PENDANTS REQ'D )	
(16)	TIGHTEN LOCKNUT SUFFICIENTLY TO CLAMP BEARING INNER RACE.	
(17)	STOWAGE TIMBER REQUIRED	
STOWAGE CASE		TIMBERS (171697)
#133A JIB IN #44 BOOM		
FEET	METERS	
70 - 80	21.3 - 24.4	16
90 - 120	27.4 - 36.6	24
130 - 160	39.6 - 48.8	32
170 - 200	51.8 - 61.0	40
STOWAGE TIMBERS MUST BE REMOVED FROM BOOM SECTIONS FOR CRANE OPERATION.		
(18)	STOWAGE TIMBER REQUIRED	
STOWAGE CASE		TIMBERS (171660)
#132 JIB IN #133A JIB		
FEET	METERS	
40	12.19	6
60 - 80	18.29 - 24.4	12
100 - 120	30.50 - 36.6	18
STOWAGE TIMBERS MUST BE REMOVED FROM JIB SECTIONS FOR CRANE OPERATION.		
(19)	BEAM 172883 & 172884 AND ROPE GUIDE ASSEMBLY 172986 MUST BE REMOVED FOR LIFT CRANE OPERATION.	
(20)	REFER TO SPECIFIC CAPACITY CHART FOR APPROPRIATE BOOM & JIB COMBINATIONS.	
(21)	REFER TO LUFFING JIB RAISING PROCEDURE #7661A FOR RAISING & LOWERING BOOM & JIB.	
(22)	USED ON BOOM TOP - SEE (23)	
(23)	SEE CRANE ASSEMBLY & RIGGING GUIDE IN THE OPERATIONS MANUAL FOR INSTRUCTIONS ON PENDANT STORAGE.	
(24)	SPREADER LOCATIONS: A) FOR JIBS REQUIRING ONE SPREADER: LOCATE AT THE FIRST PENDANT CONNECTION CLOSEST TO THE LUFFING JIB TOP. (REF. VIEW "P" - "P"). B) FOR JIBS REQUIRING TWO SPREADERS: LOCATE ONE AT THE FIRST PENDANT CONNECTION CLOSEST TO THE LUFFING JIB TOP AND THE SECOND SPREADER AT THE PENDANT CONNECTION CLOSEST TO THE JIB STRUT.	
(25)	PIN 173713 IS USED IN CONJUNCTION WITH SPREADER 173712 (2 PINS PER SPREADER) AND REPLACES PIN SUPPLIED WITH PENDANT. (REF. VIEW "P" - "P").	
(26)	STAMP DATA ON 181503 AND INSTALL AFTER FINAL PAINTING.	
(27)	PIN 564094 IS TO BE USED FOR MAIN STRUT ERECTION ONLY. IF WEDGE SOCKET 182233 IS USED FOR ANY LOAD LIFTING LINE, PIN 563960 (REF.) IS REQUIRED.	
(28)	(12 FT.) - (3.66 M)	
(29)	(28 FT.) - (8.53 M)	
(30)	USED ON LUFFING JIB TOP - SEE (23)	
(31)	LUFFING JIB ASSEMBLIES REQUIRING OUTSIDE ASSIST MUST HAVE 1000 FT. (304.8 M) OF JIB HOIST LINE.	

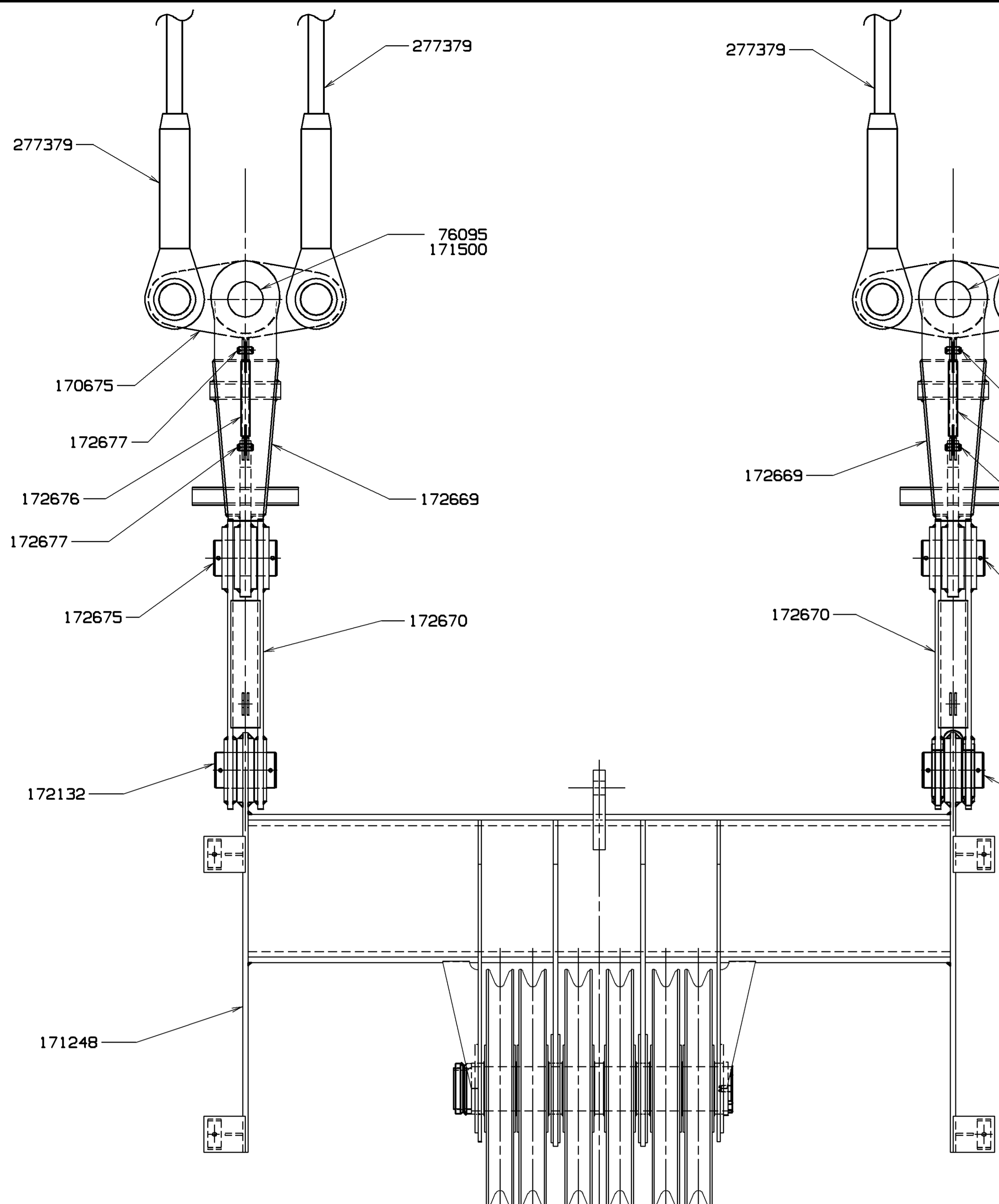
DECIMAL PLACES	FABRICATION	MACHINING
(1) PLACE 0.0	± 1.00	± 1.00
(2) PLACE 0.50	± 0.50	± 0.50
(3) PLACE 0.000	± 0.000	± 0.000

THIS PRINT REMAINS THE PROPERTY OF WHITING CRANES, INC. IF IT IS LOST, SUBJECT TO RETURN UPON DEMAND. ALL INFORMATION CONTAINED HEREIN IS CONFIDENTIAL. AND ON EXPRESS CONDITION THAT IT IS NOT TO BE COPIED OR USED DIRECTLY OR INDIRECTLY IN ANY WAY WHATSOEVER DETRIMENTAL TO OUR INTERESTS.

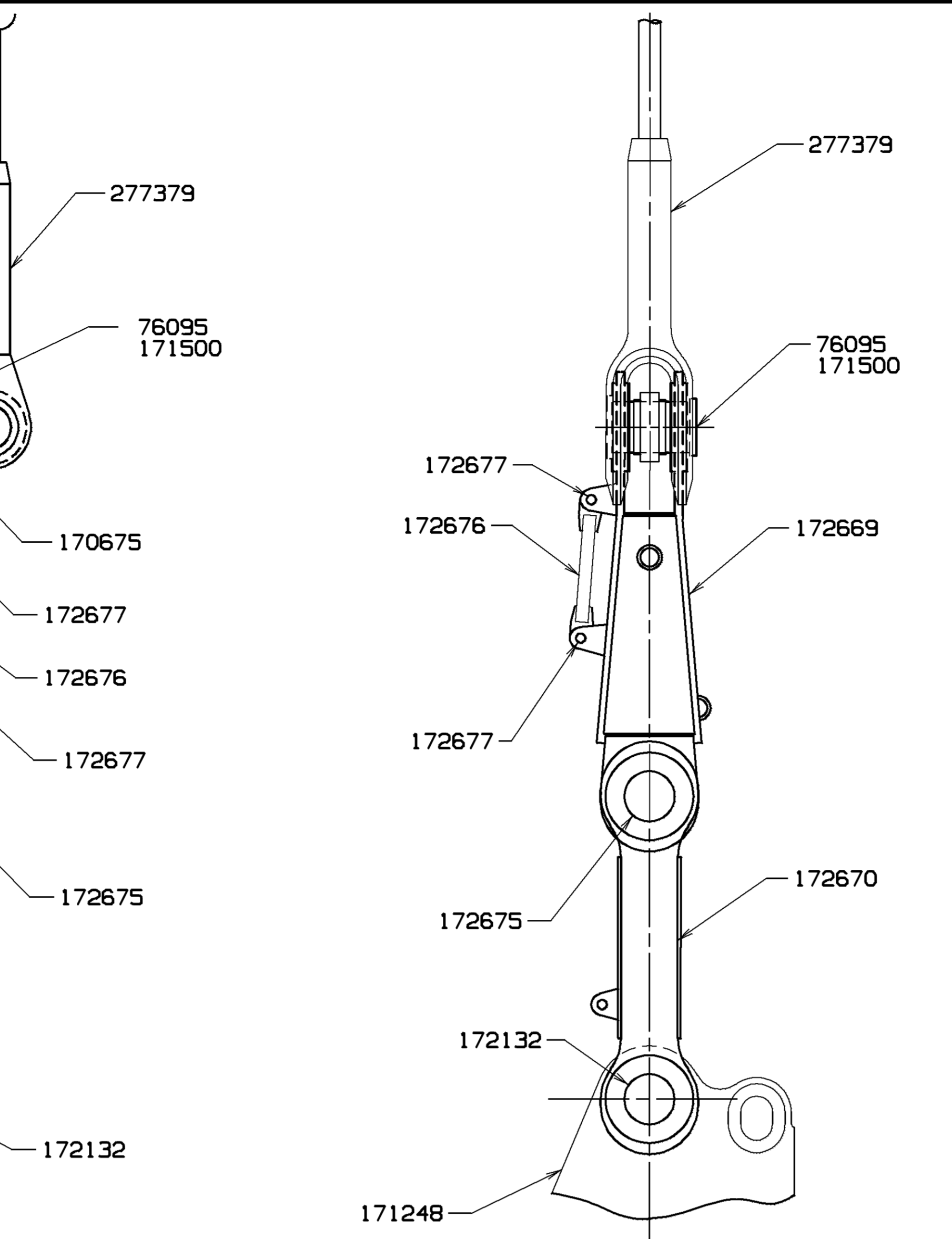
DATE: 2-16-93  
DRAWING NO.: 174311  
SHEET NO.: SHT 2 OF 4

BILL OF MATERIAL		DATE	REV. NO.	ASSEMBLIES USED ON
QTY	DESCRIPTION	MATERIAL	QTY	

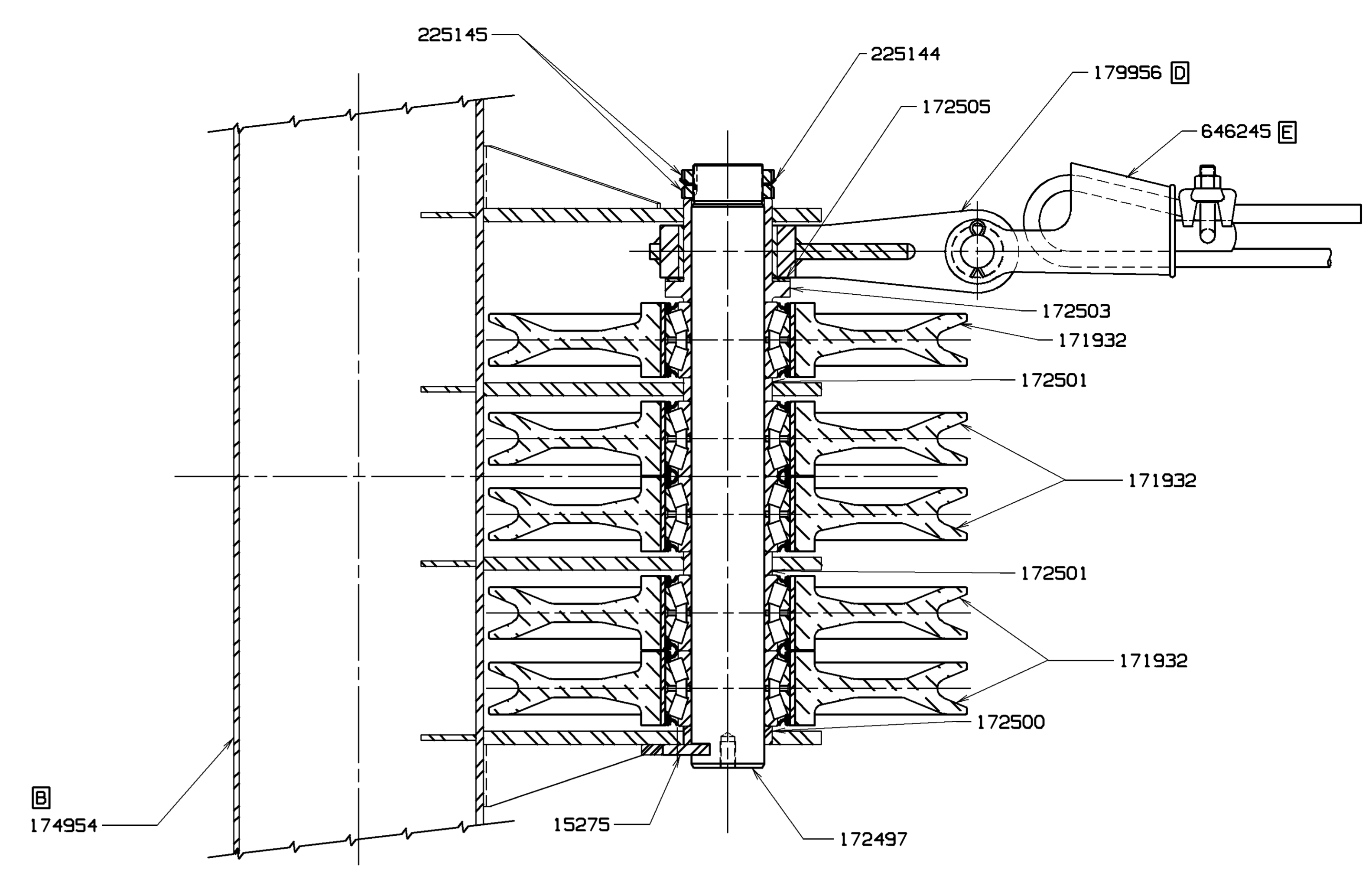
REV. NO.	DATE	DESCRIPTION
3-31-93	DJS	DELETED
5-17-93	DJS	WAS 172102
4-21-02		WAS 172103
12-17-97	PGD	WAS 172504
12-30-02		WAS 172504
15-05-07		WAS 169547/169576/564036



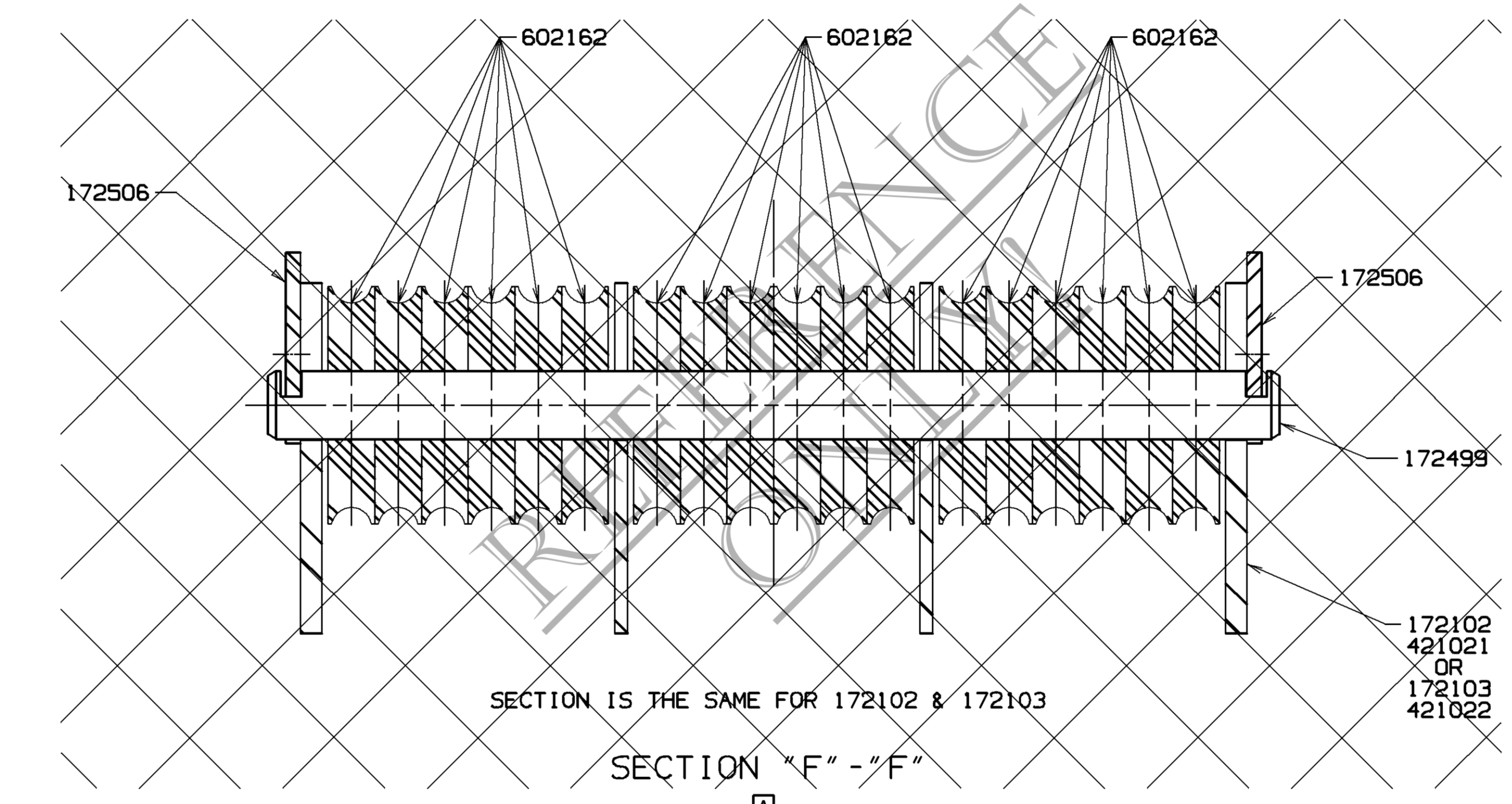
VIEW "A" - "A"



SECTION "C" - "C"

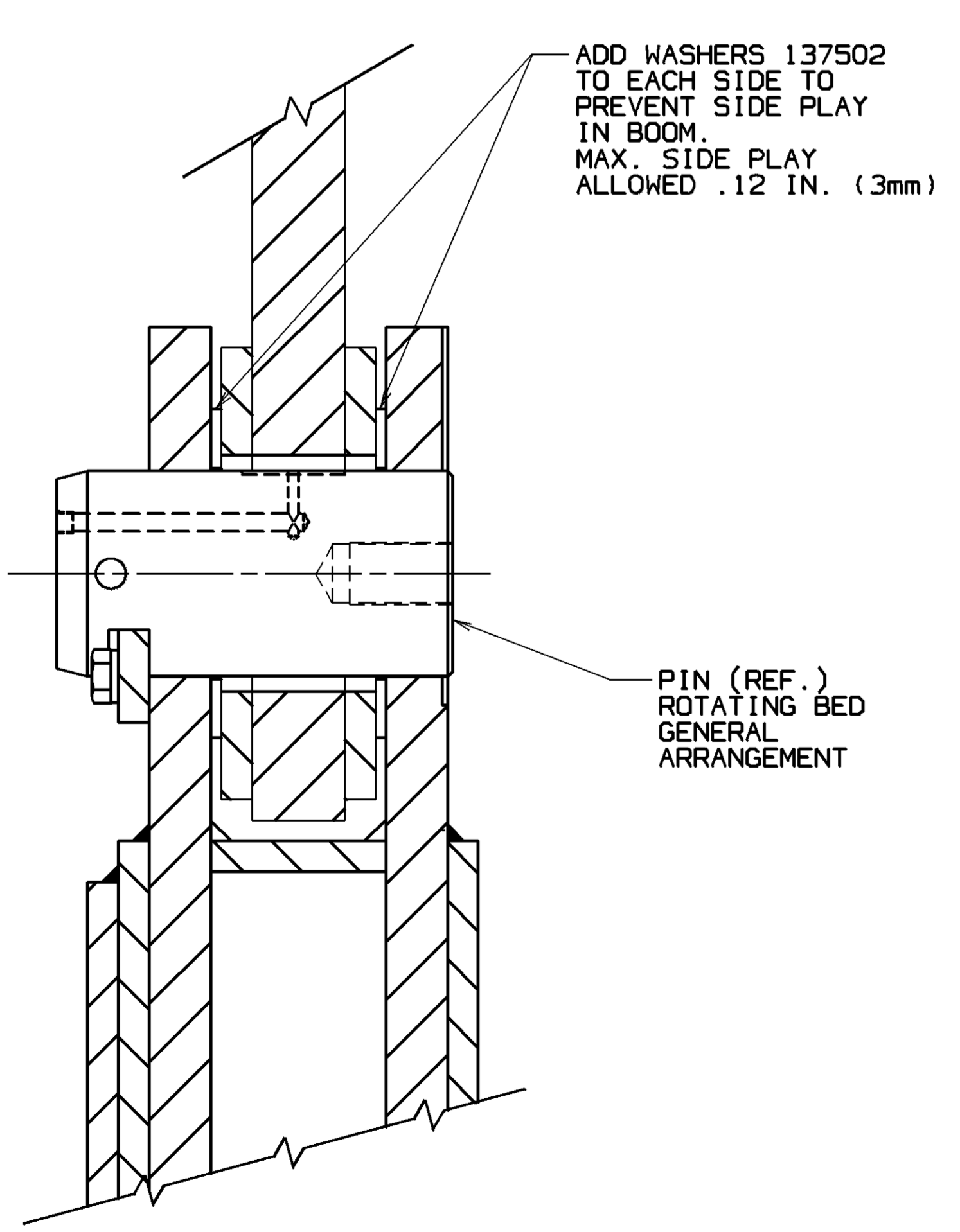
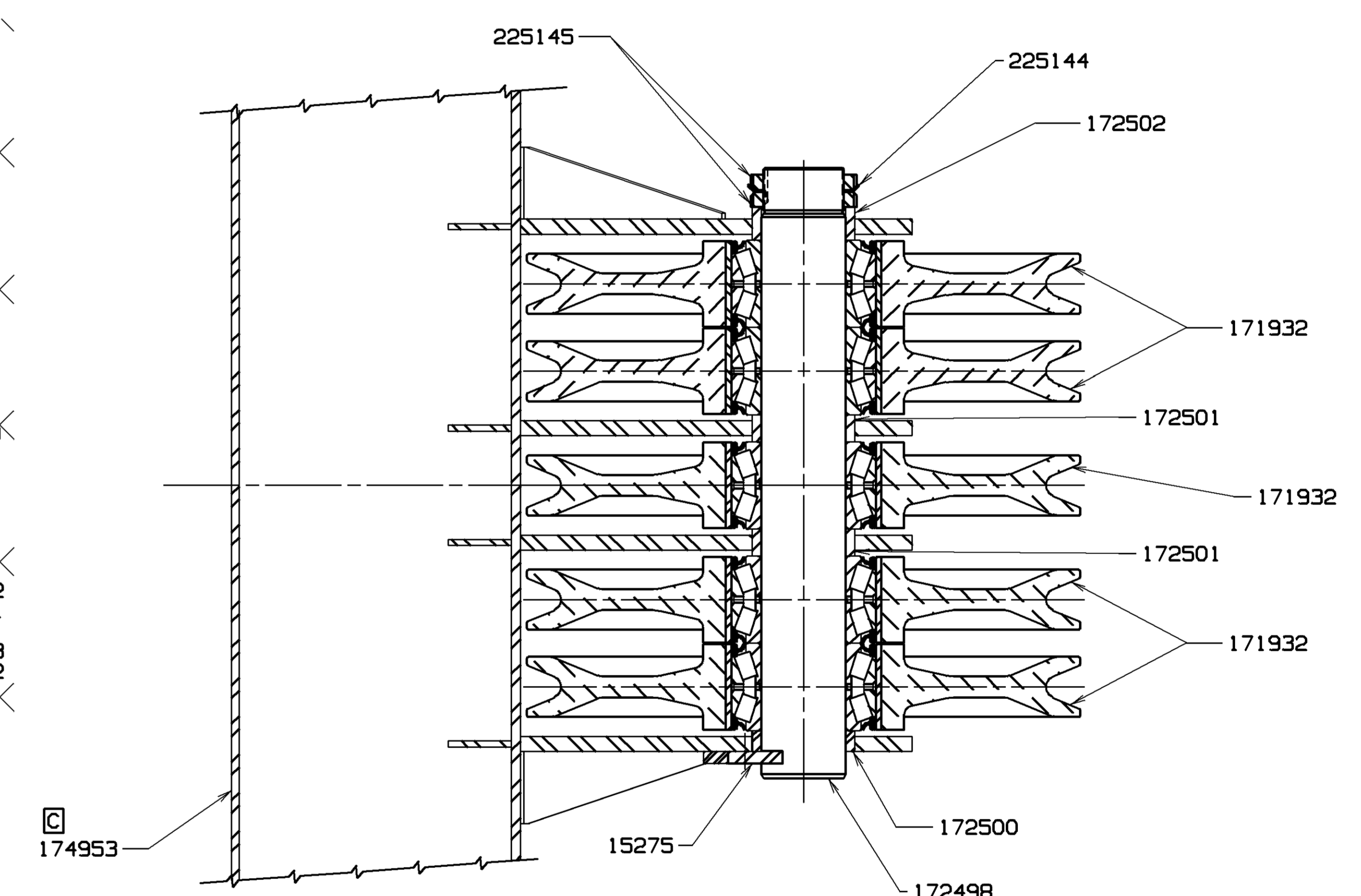


SECTION "D" - "D"

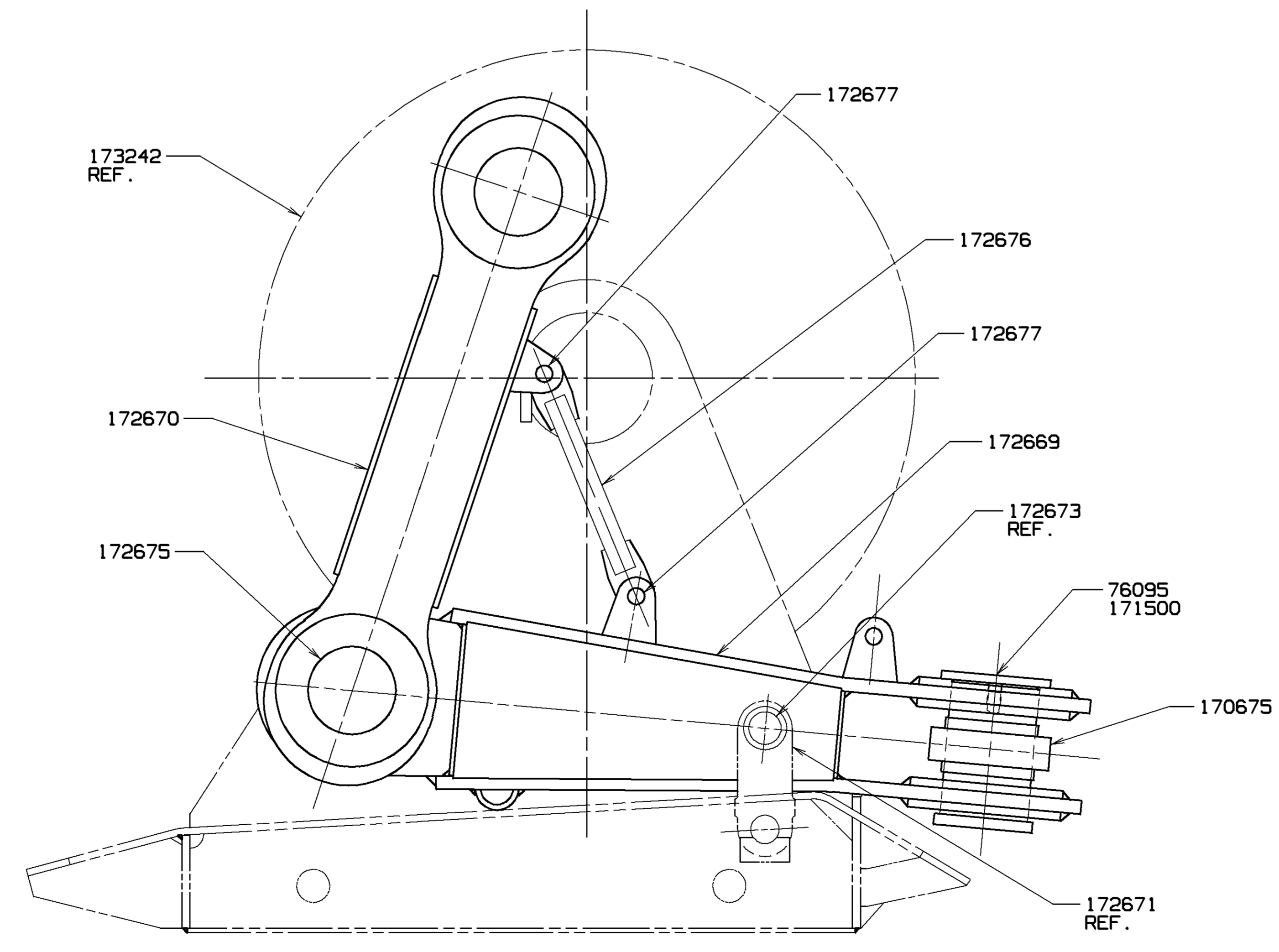


SECTION IS THE SAME FOR 172102 & 172103

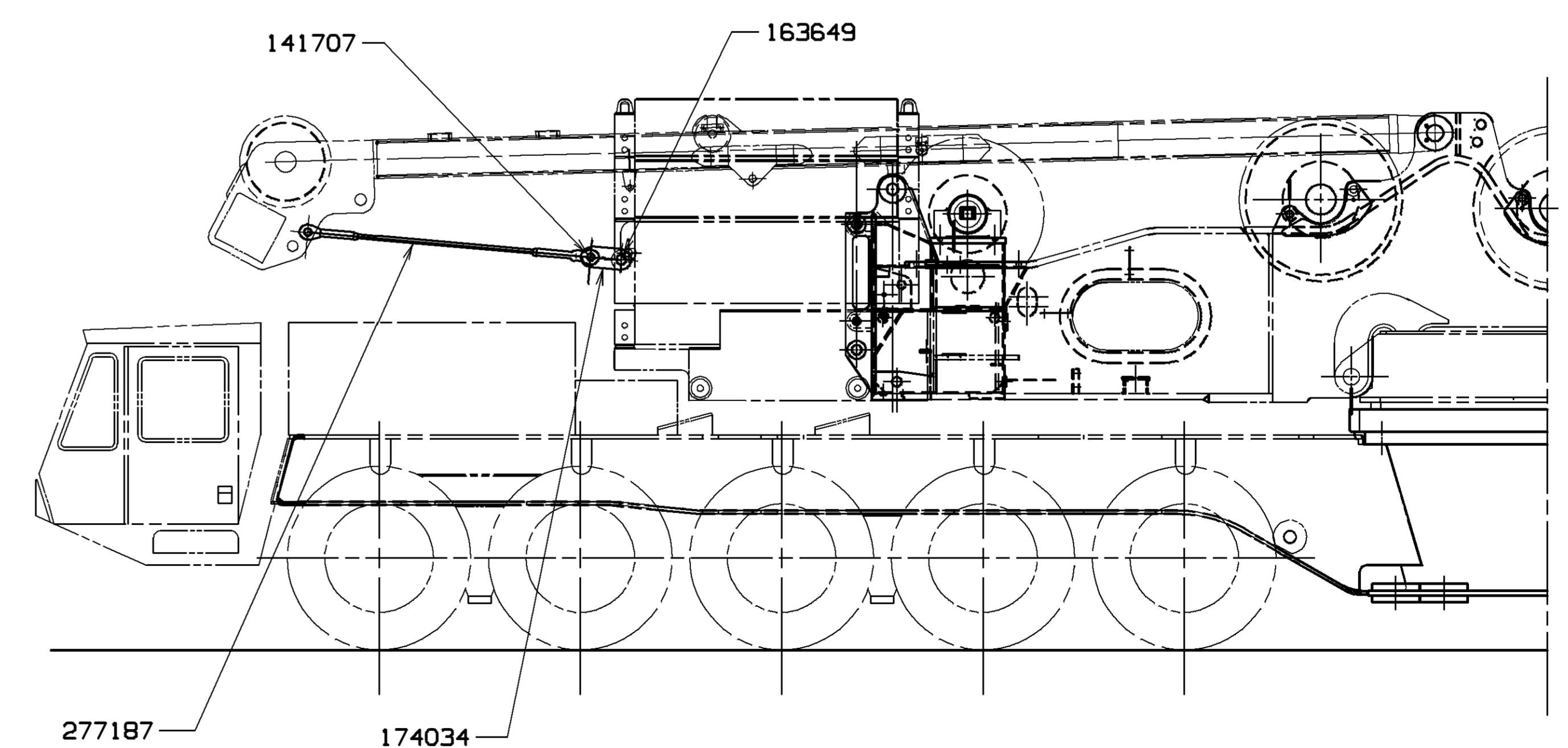
SECTION "F" - "F"



SECTION "B" - "B"



LINK STORAGE FOR SHIPPING



VIEW SHOWING GANTRY TIE-DOWN

TOLERANCE UNLESS OTHERWISE SPECIFIED		SCALE		MANTOWOC CRANES, INC.	
DECIMAL PLACES	FABRICATION	INCHES	MILLIMETERS	MODEL	DATE
0.000	± 0.000	1:10	1:10	Mantowoc, Wisconsin	2-16-93
0.00	± 0.000	1:20	1:20	MOD-M-250T	
0.00	± 0.000	1:50	1:50		
0.00	± 0.000	1:100	1:100		
0.00	± 0.000	1:200	1:200		
0.00	± 0.000	1:500	1:500		
0.00	± 0.000	1:1000	1:1000		

DATE	2-16-93
REV. NO.	174311
SHEET	3 OF 4
DATE	2-16-93
REV. NO.	174311
SHEET	3 OF 4

