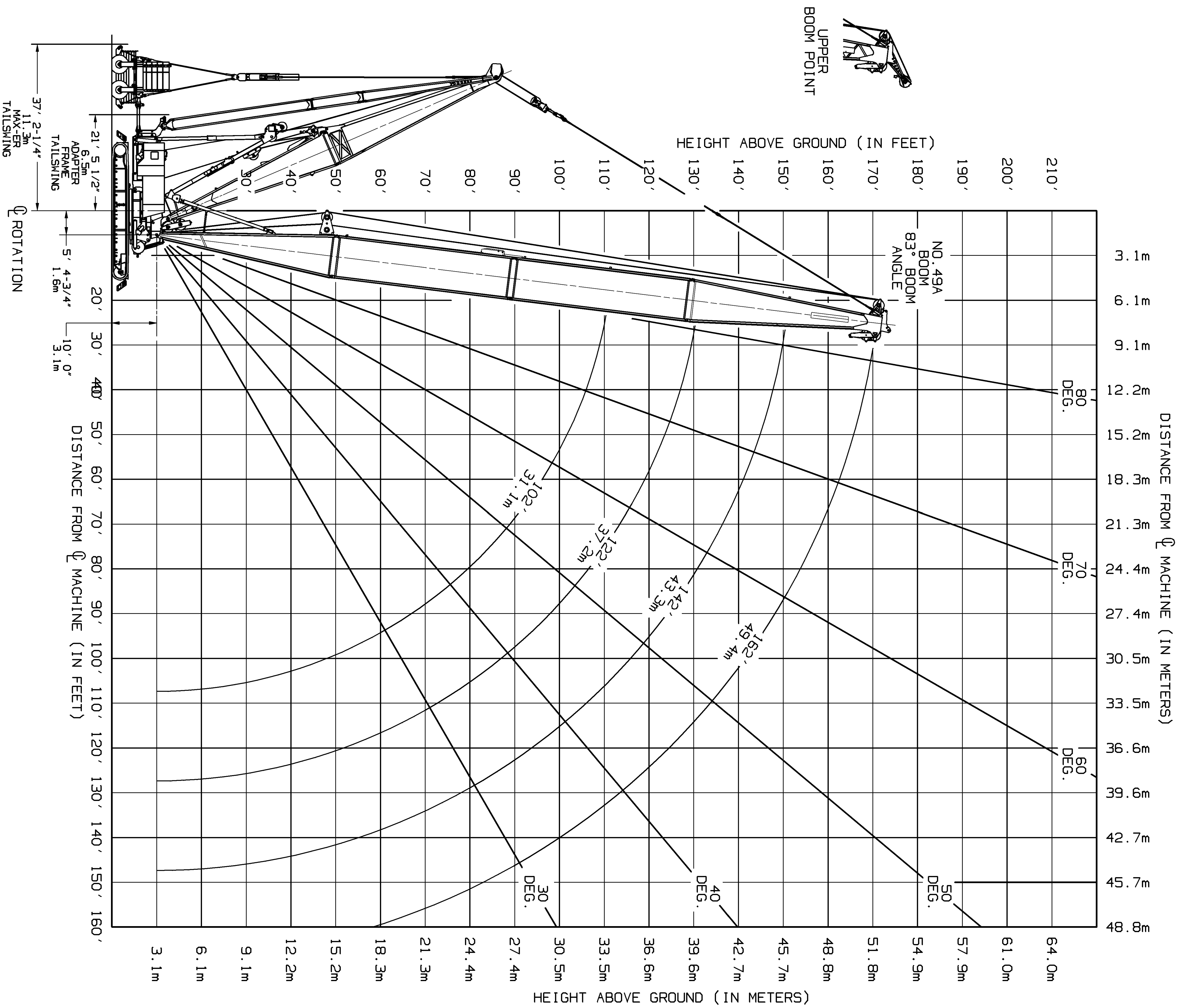


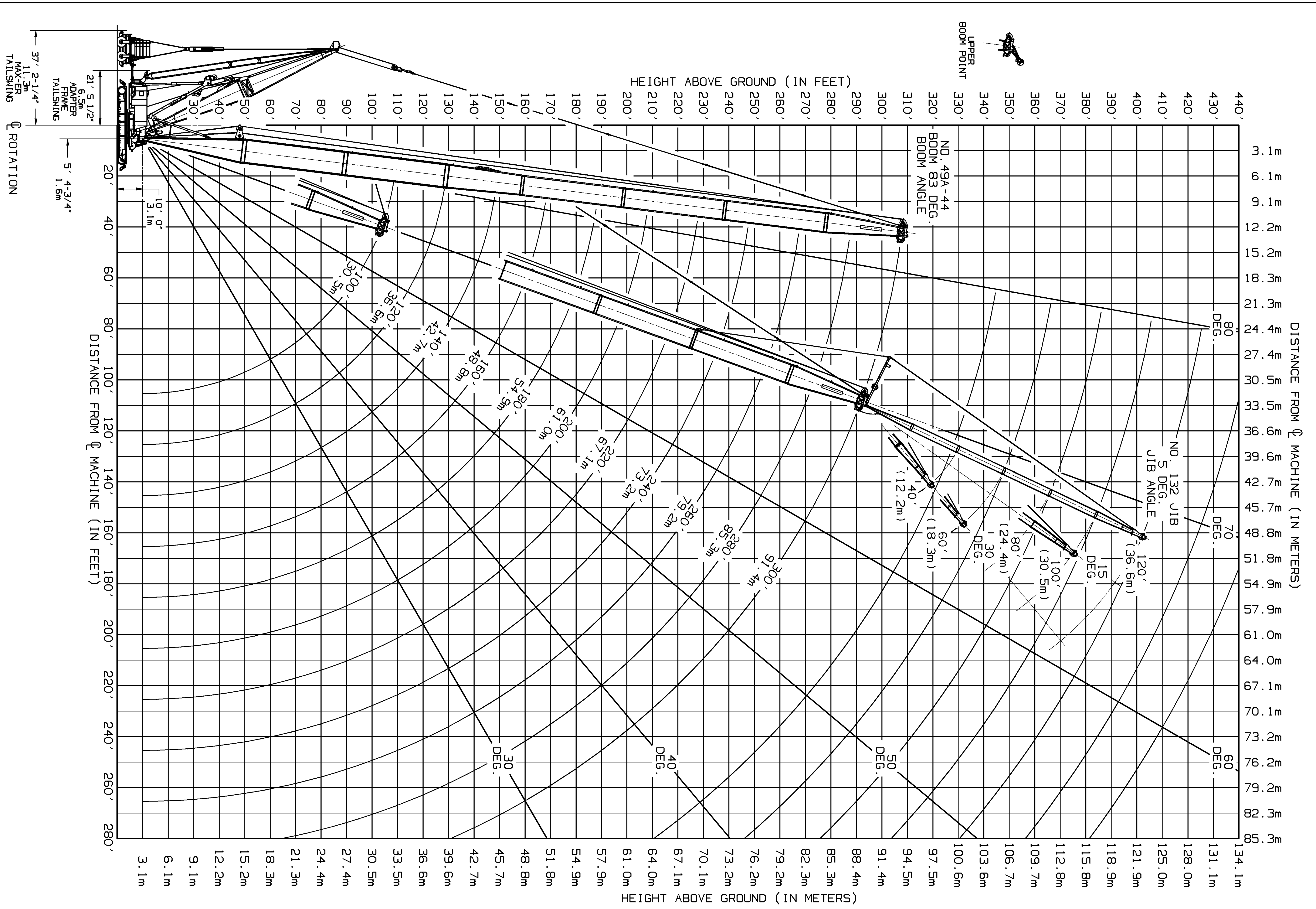
- NOTE 1: THIS DRAWING IS INTENDED ONLY AS A GUIDE TO ASSIST IN JOB PLANNING.
- NOTE 2: FOR PLANNING A LIFT, THIS DRAWING IS TO BE USED IN CONJUNCTION WITH APPROPRIATE CAPACITY CHARTS, RANGE CHART, LOAD LINE SPECIFICATIONS, RIGGING DRAWING, AND OUTLINE DIMENSIONS.
- NOTE 3: FOR PLANNING LIFTS WHERE CLEARANCES ARE LIMITED AND ACCURACY IS DESIRED, A DETAILED LAYOUT SHOULD BE PREPARED.
- NOTE 4: DISTANCE OF MANITOMOC LOAD BLOCK TO BOOM POINT BASED ON 2 1/2 DEGREE FLEET ANGLE OR PHYSICAL LIMITATIONS.
- NOTE 5: WHEN EQUIPPED WITH HOIST LIMIT CONTROL, LOAD BLOCK TO BOOM POINT MINIMUM DISTANCE MAY BE MORE THAN INDICATED. SEE OPERATOR'S MANUAL FOR "HOIST LIMIT CONTROL".
- NOTE 6: MAXIMUM BOOM ANGLE 83 DEGREES FOR NO.49A BOOM OR NO.49A-44 BOOM WITH HEAVY LIFT TOP. MAXIMUM BOOM ANGLE 81 DEGREES FOR NO.49A-44 BOOM WITH NO.132 JIB.

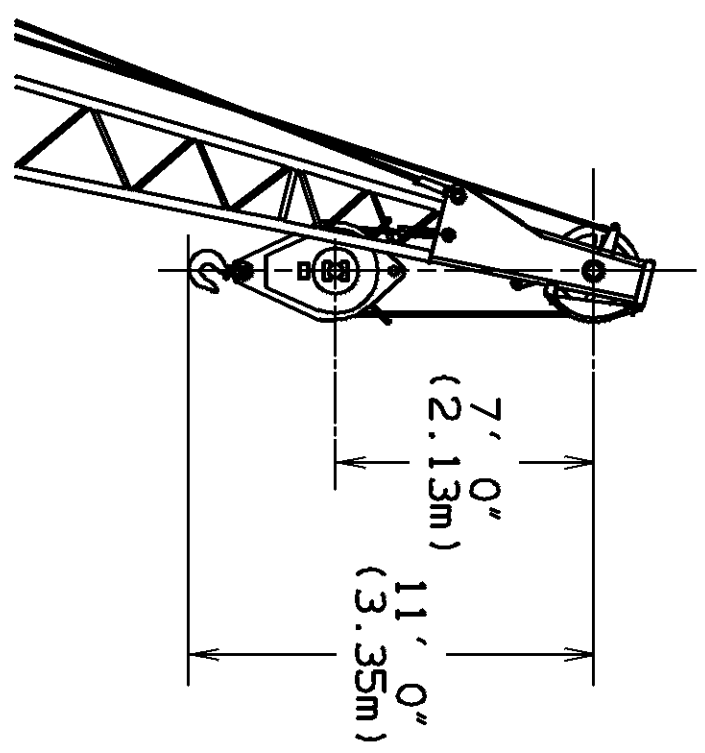


ONE	3/25/95	MANITOWOC CRANES, INC.	REVISION
1-13-95	DR. NVS	MANITOWOC WISCONSIN	DIAGRAM - RANGE ASSEMBLY
176777	DR. TMB	MODEL M-250, 2250	NO. 49A BOOM
	DR. TSC	MAX-ER 400	03-25-99 NVS

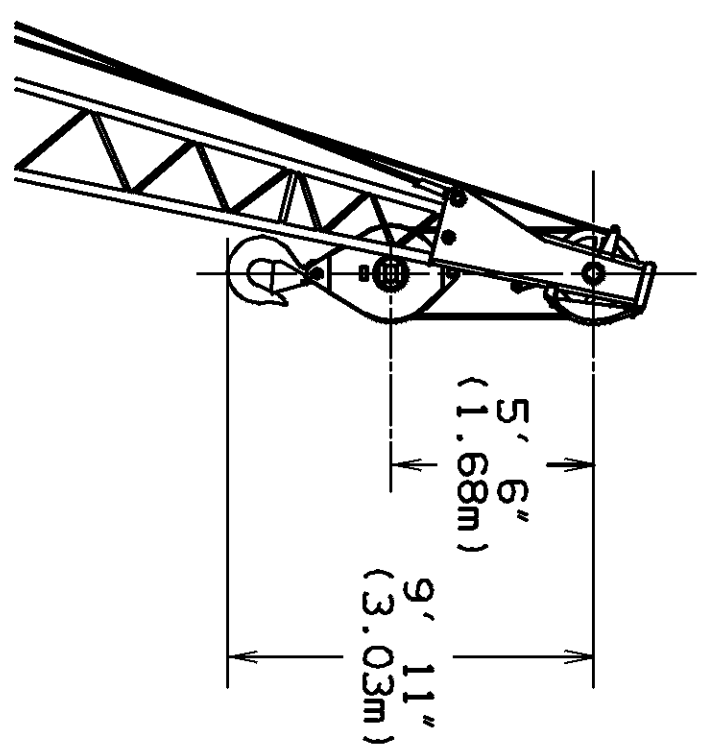
DATE	1-13-95	BY	1/16"=1'	REVISION
DRAWING NO.	176777	DR	NVS	NO. 49A-44 BOOM
MANUFACTURER	Manufactures Cranes, Inc.	MODEL	M-250, 2250	NO. 49A-44 BOOM
MAX-ER	MAX-ER 400	MAX-ER	400	NO. 49A-44 BOOM

DIAGRAM	RANGE ASSEMBLY	NO.	49A-44 BOOM
DATE	03-25-99	BY	NVS

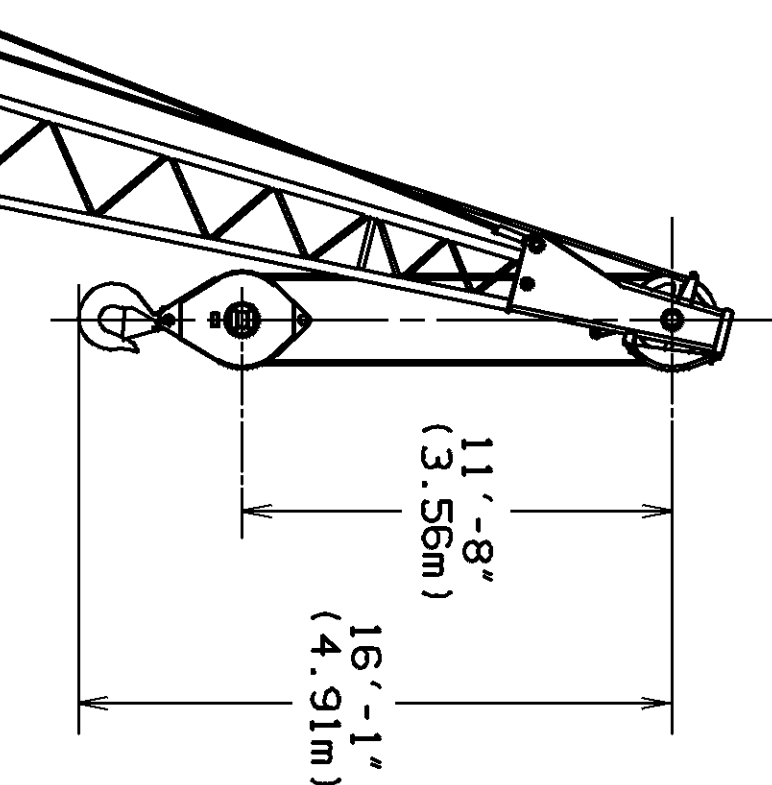




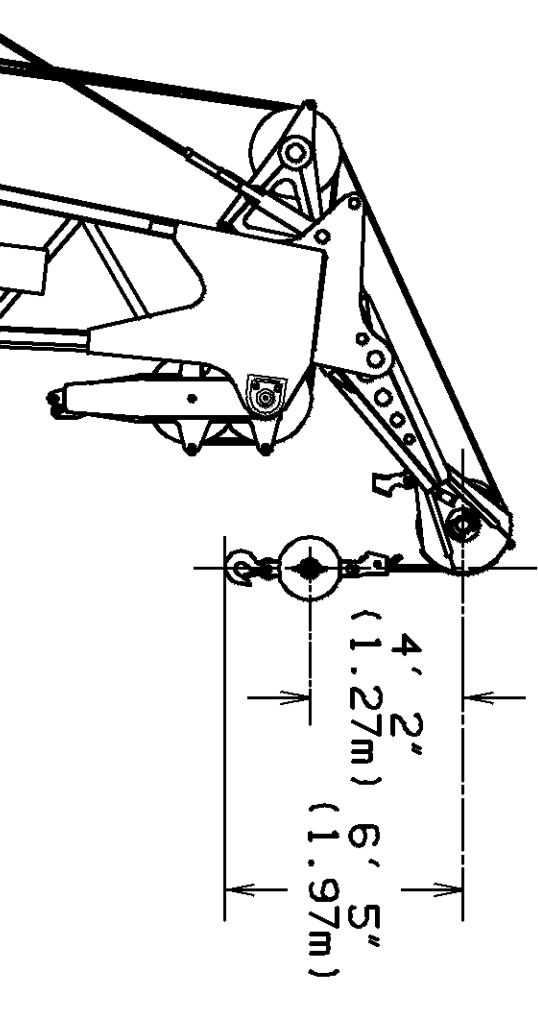
30 TON BLOCK TO JIB POINT
MINIMUM DISTANCE
NO.132 JIB - 2 PARTS OF LINE



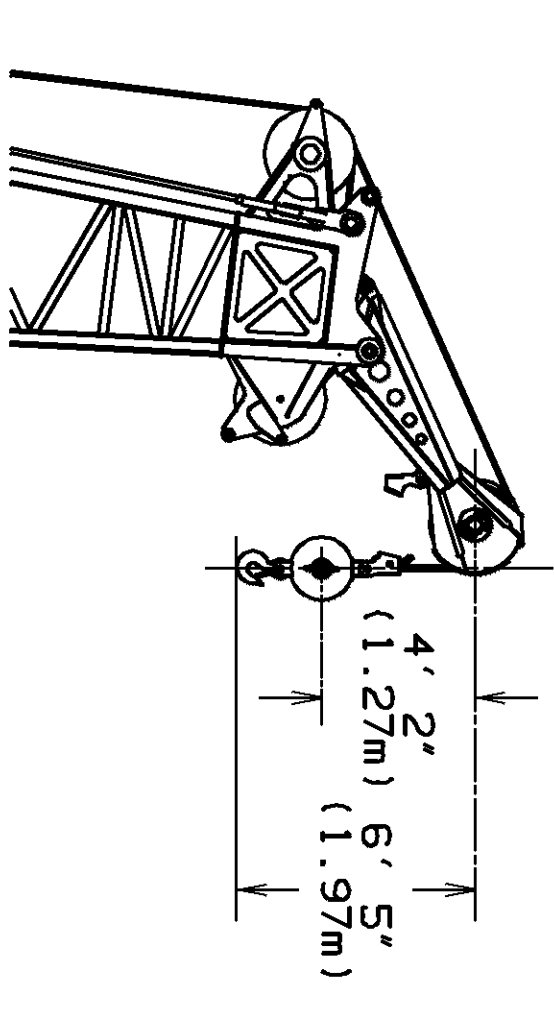
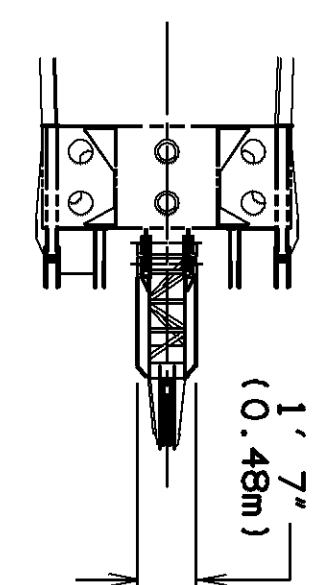
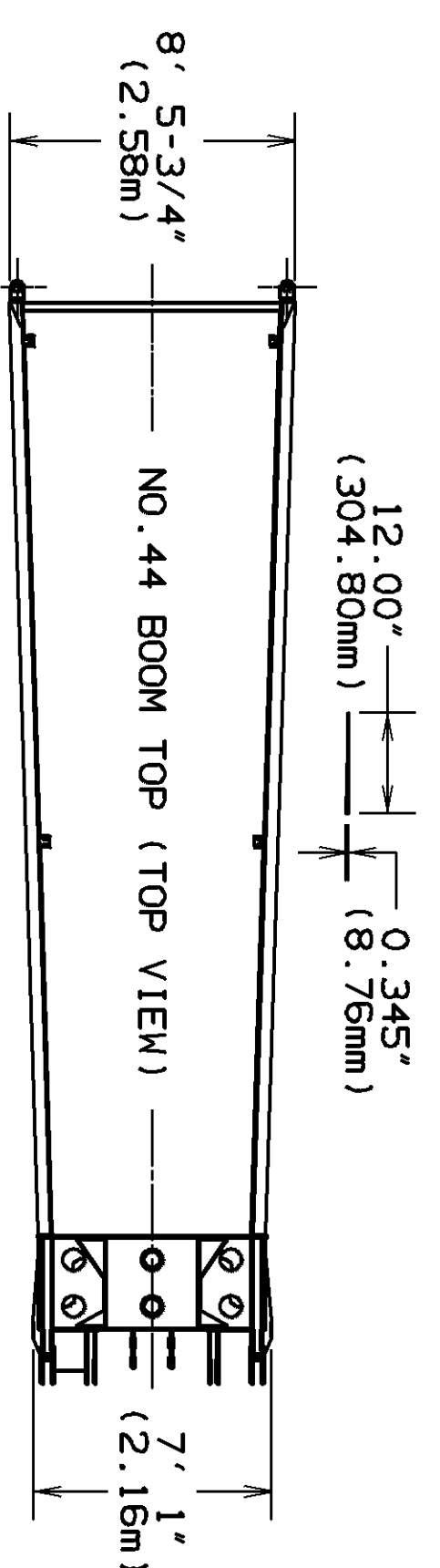
60 TON BLOCK W/O/OUT CHEEK PLATES
TO JIB POINT MINIMUM DISTANCE
NO.132 JIB - 4 PARTS OF LINE



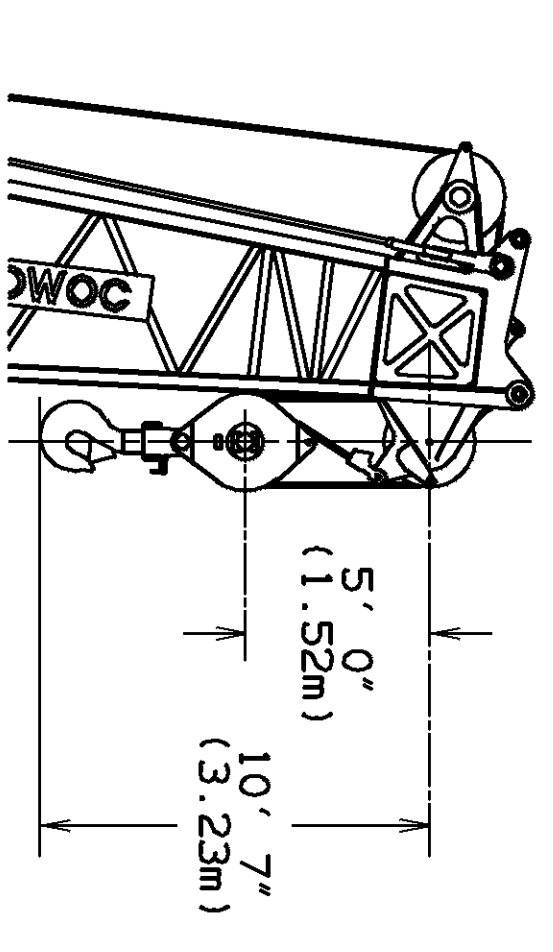
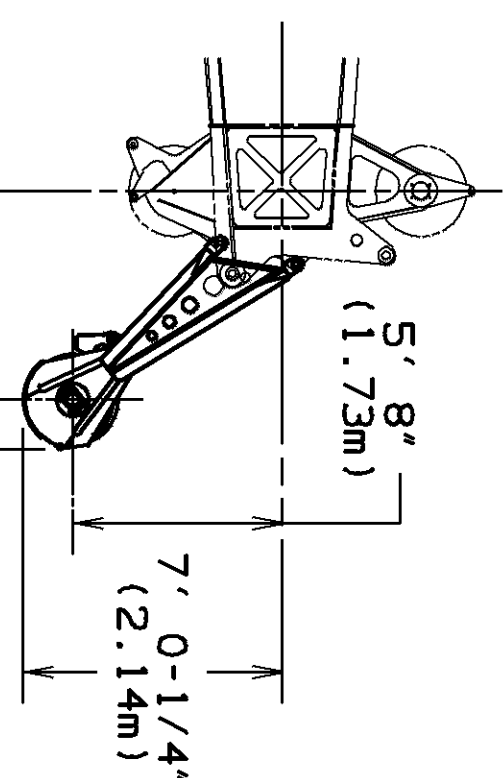
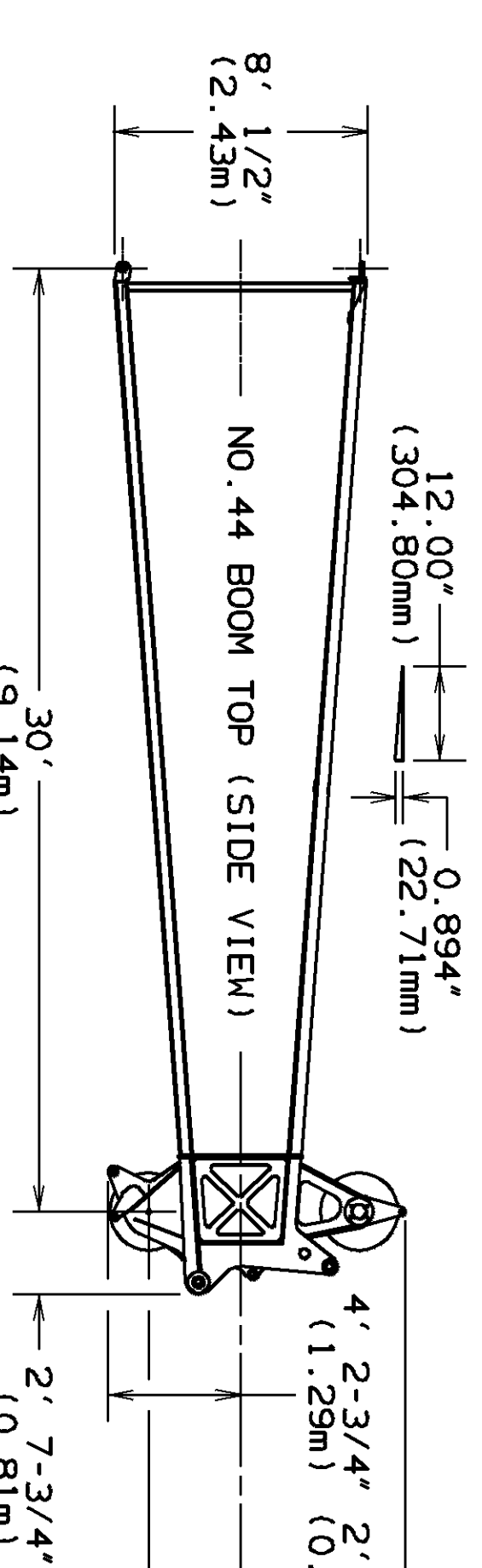
60 TON BLOCK WITH CHEEK PLATES
TO JIB POINT MINIMUM DISTANCE
NO.132 JIB - 4 PARTS OF LINE



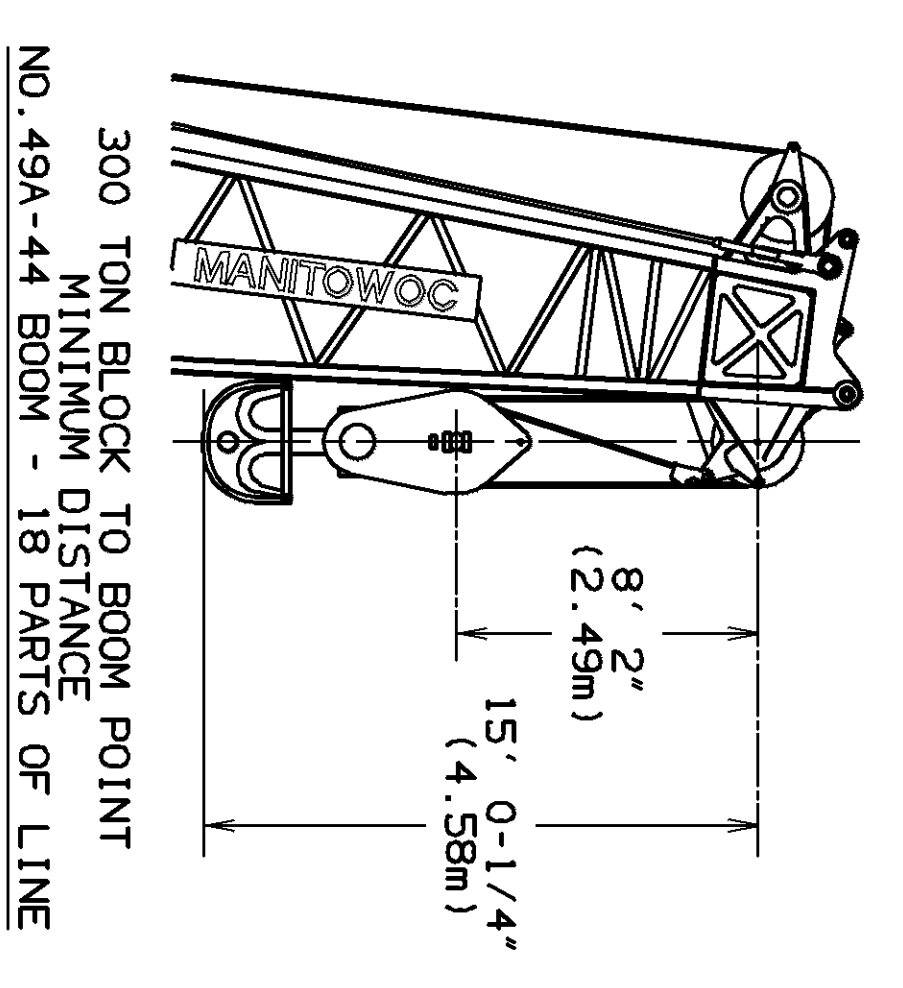
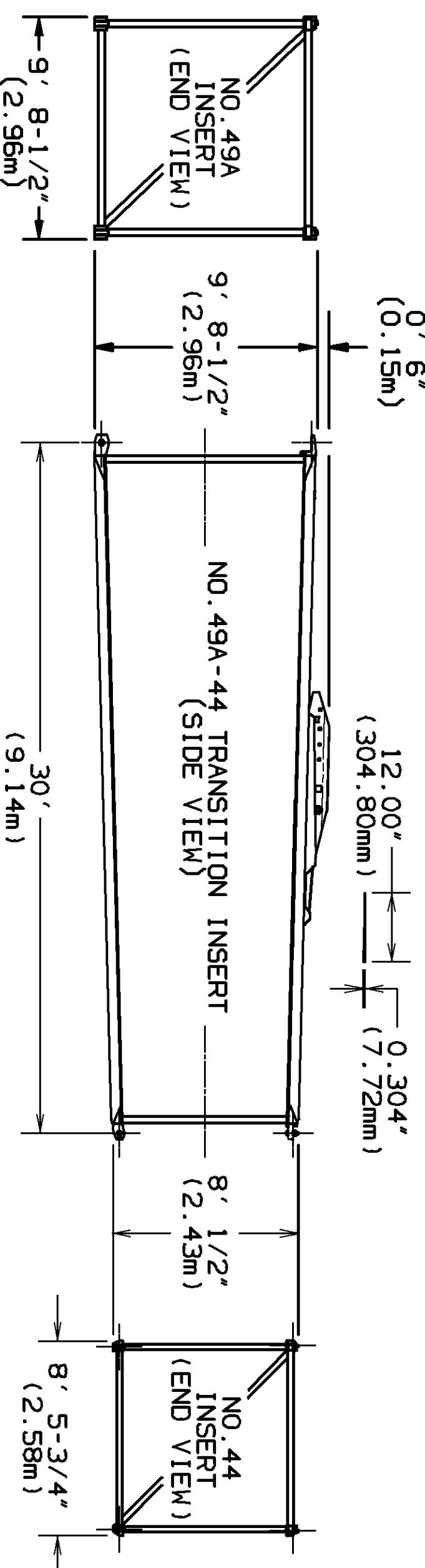
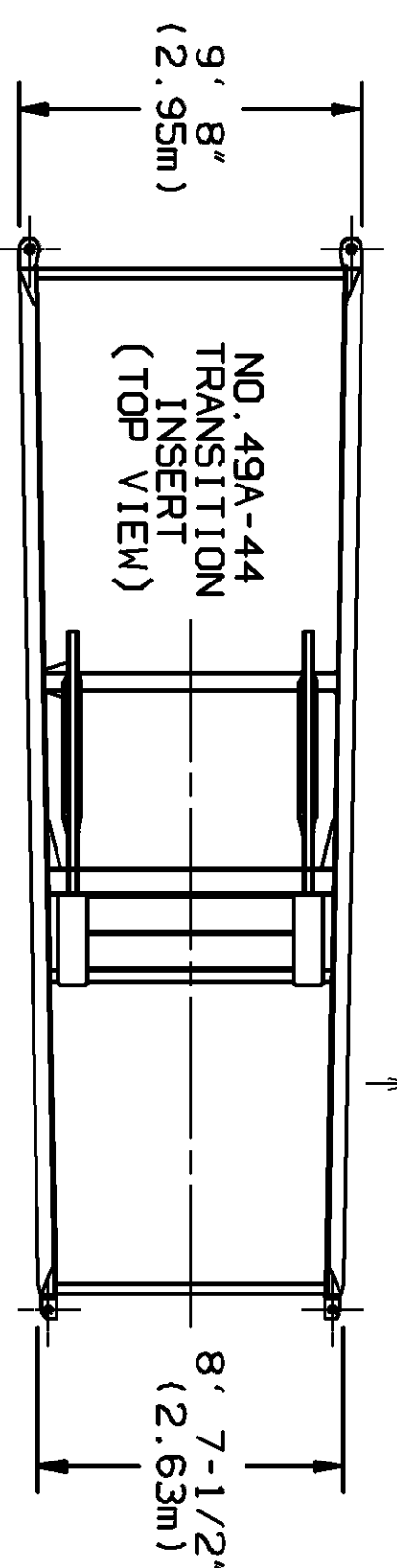
15 TON SHIVEL HOOK & WEIGHT BALL
TO UPPER BOOM POINT MINIMUM DISTANCE
NO.49A-44 BOOM - 1 PART OF LINE



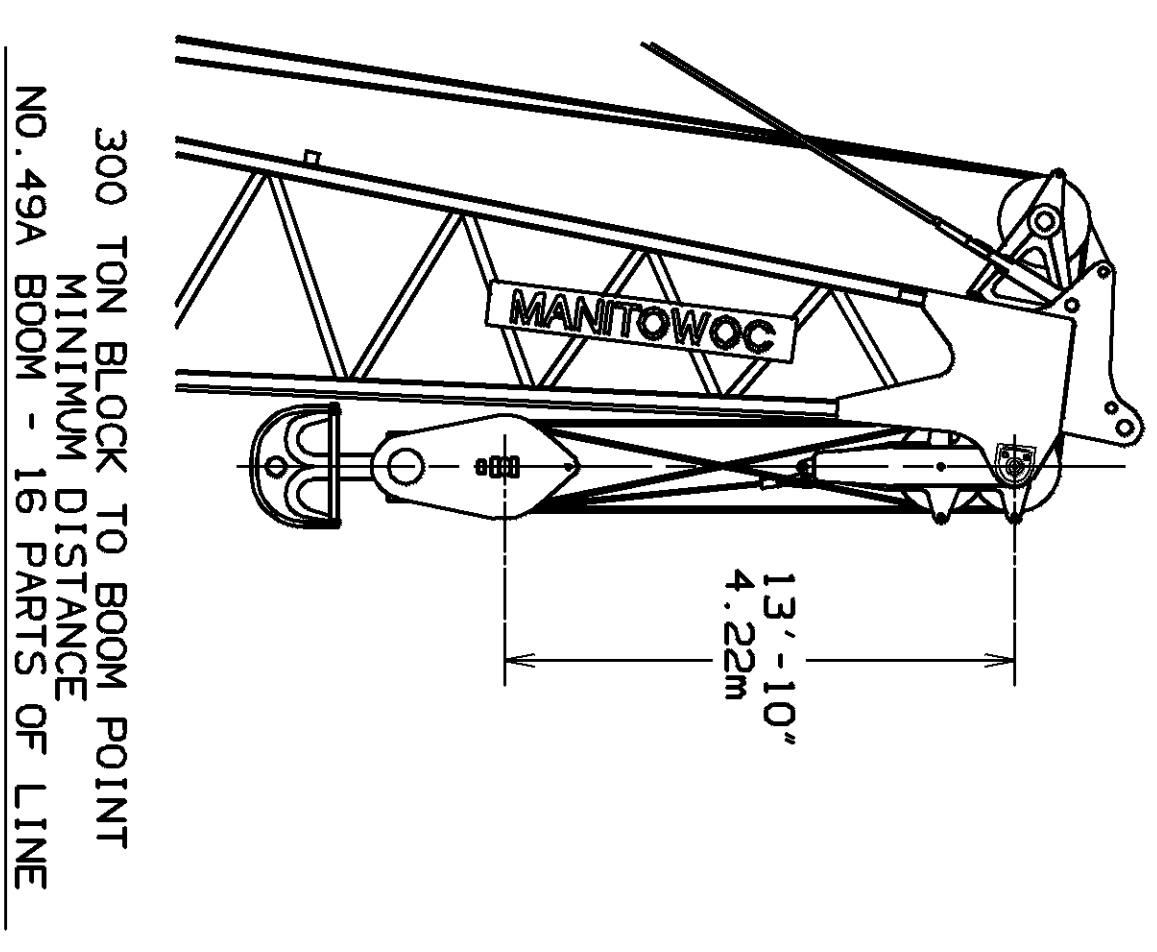
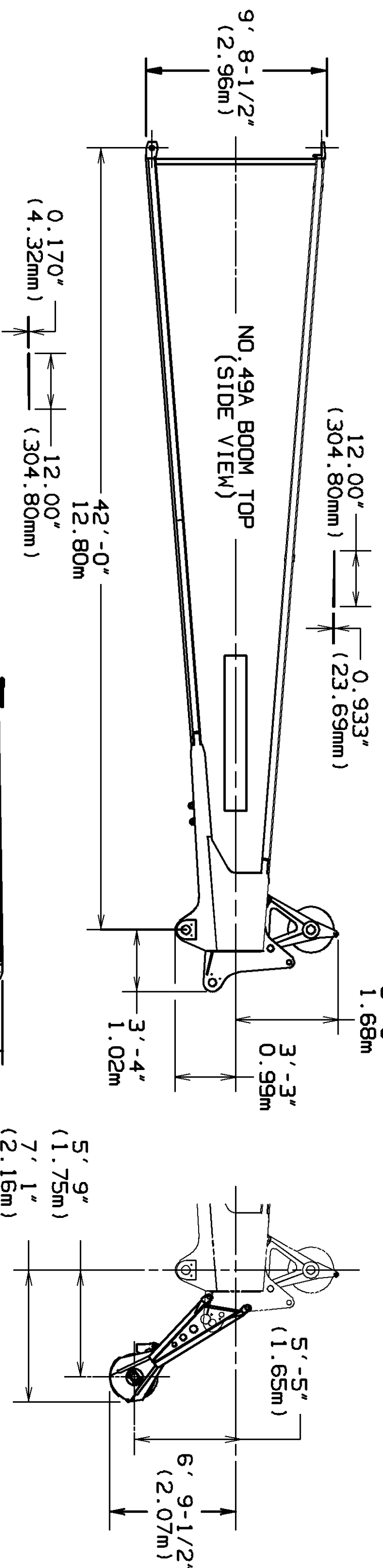
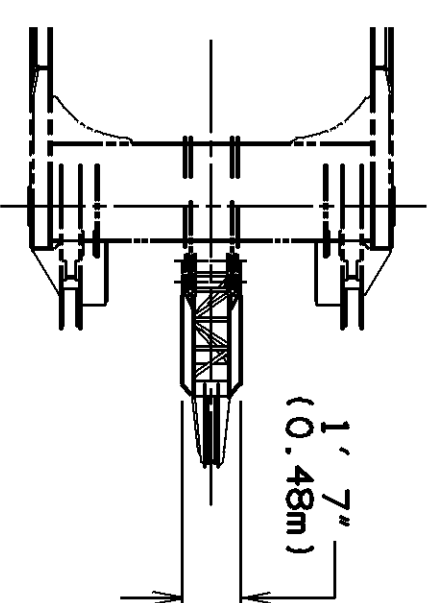
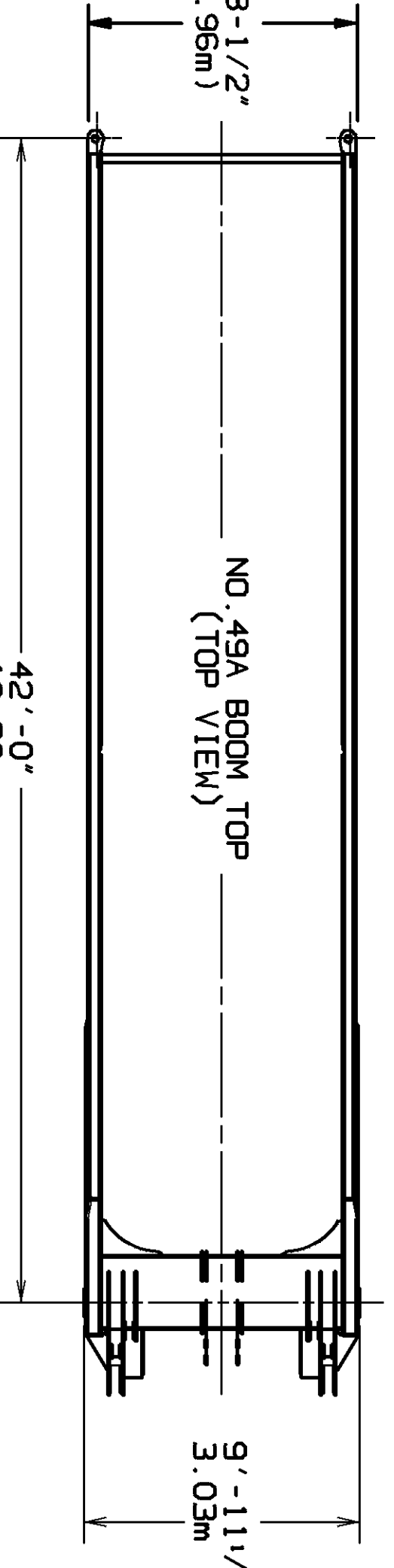
15 TON SHIVEL HOOK & WEIGHT BALL
TO UPPER BOOM POINT MINIMUM DISTANCE
NO.49A-44 BOOM - 1 PART OF LINE



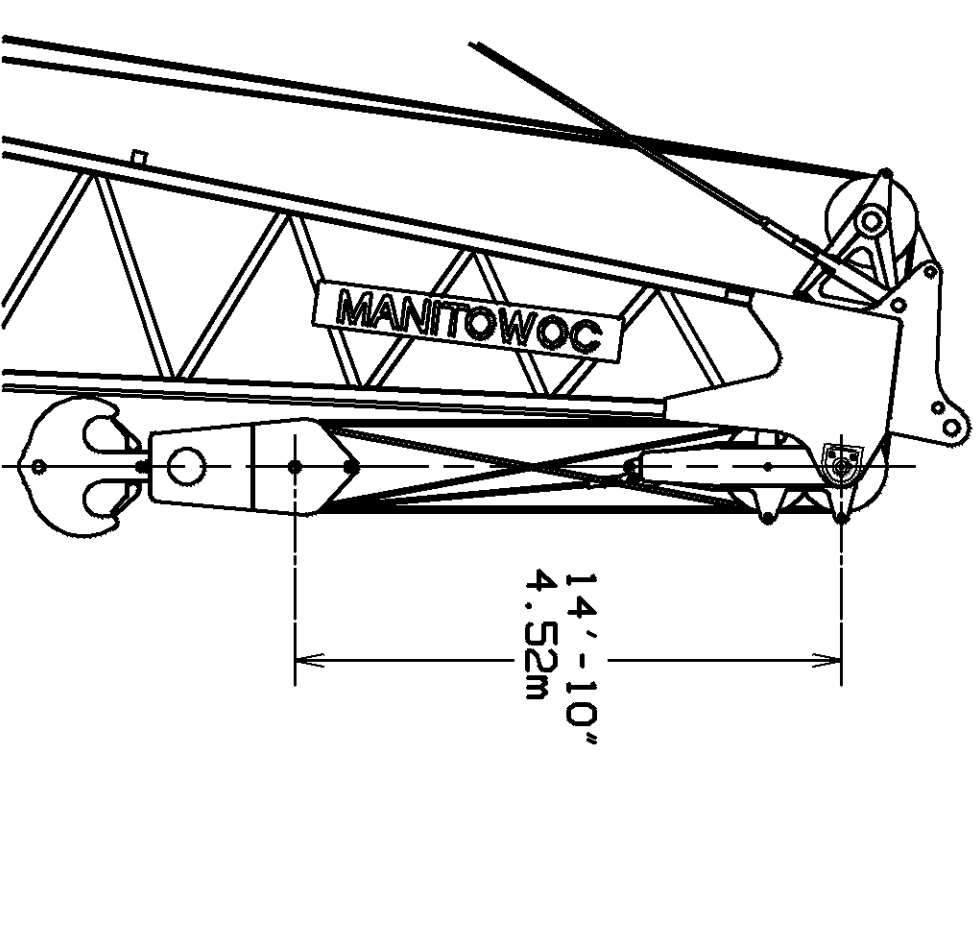
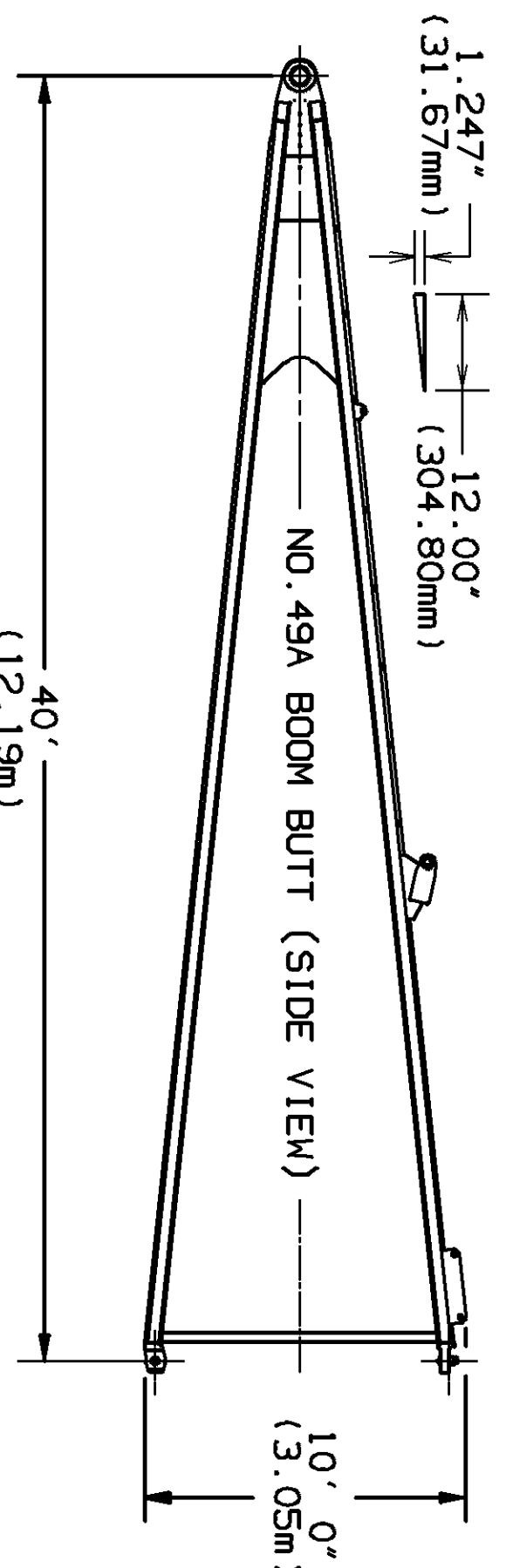
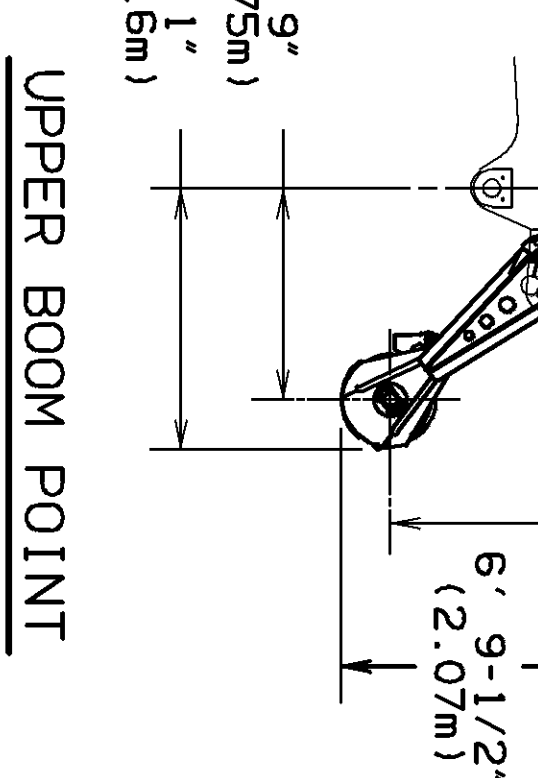
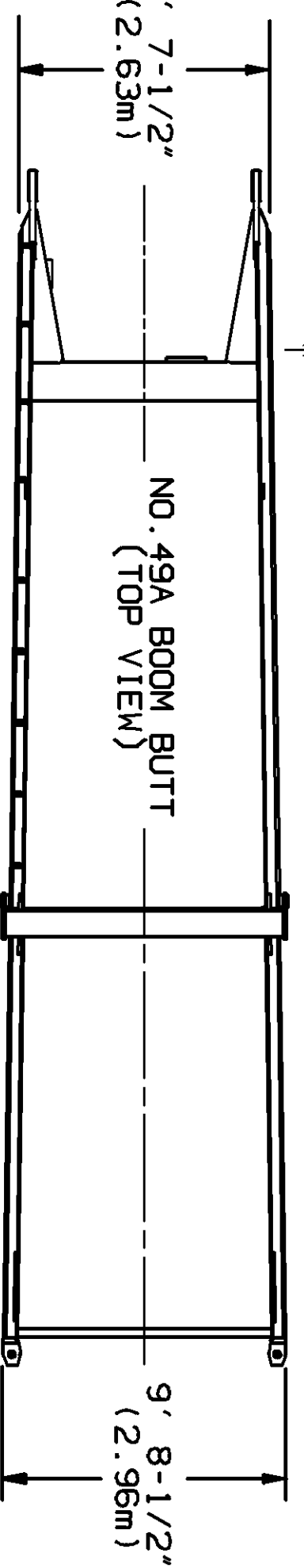
100 TON BLOCK TO BOOM POINT
MINIMUM DISTANCE
NO.49A-44 BOOM - 6 PARTS OF LINE



300 TON BLOCK TO BOOM POINT
MINIMUM DISTANCE
NO.49A-44 BOOM - 18 PARTS OF LINE



300 TON BLOCK TO BOOM POINT
MINIMUM DISTANCE
NO.49A BOOM - 16 PARTS OF LINE



500 TON BLOCK TO BOOM POINT
MINIMUM DISTANCE
NO.49A BOOM - 32 PARTS OF LINE
MINIMUM DISTANCE MEASUREMENTS
BASED ON 83° BOOM ANGLE.

DATE	1-13-95	REVISION	
DRAWING NO.	176777	DIAGRAM - RANGE ASSEMBLY	03-25-99
BY	NVS	NO.49A BOOM &	NVS
CHKD.	TMB	NO.49A-44 BOOM &	
APP'D.	TSC	NO.132 JIB	
	Manufacturer: Granada, Inc.		
	Manufacturer: Wichita		
	Model: M-250, 2250		
	Part: MAX-ER 400		