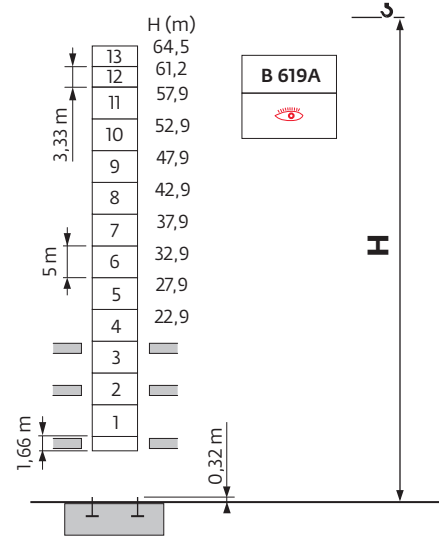
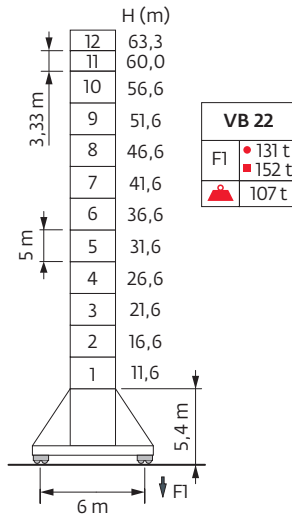
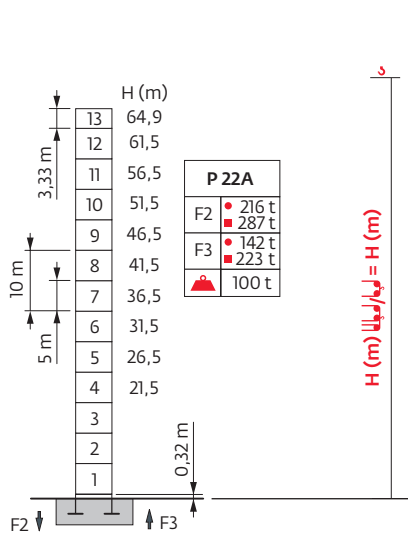


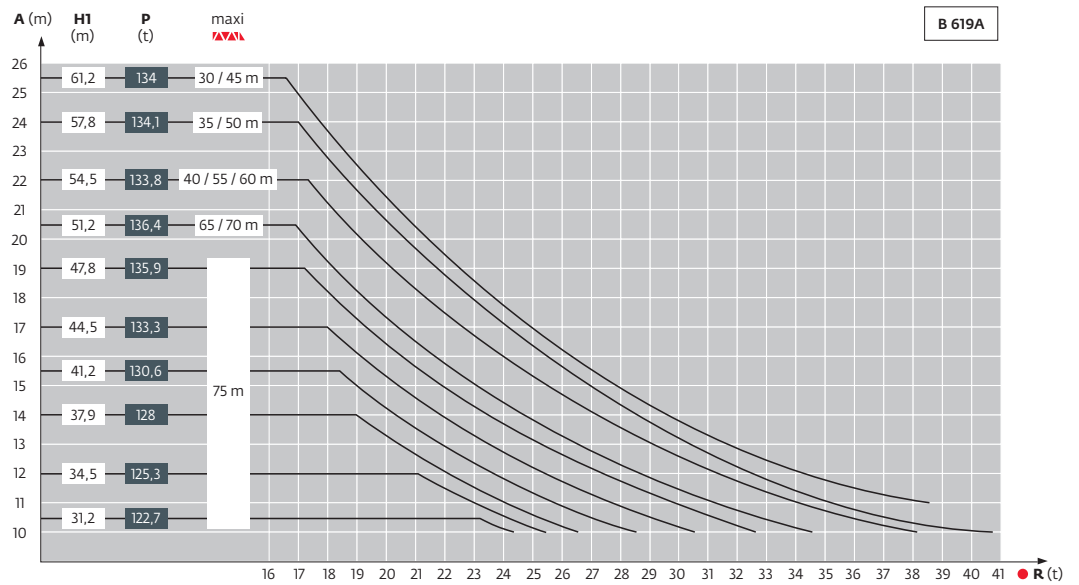
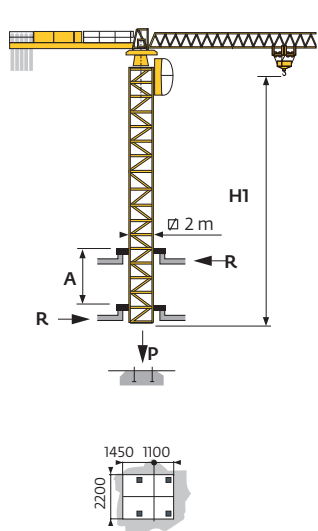
塔身组成 - 反力

□ 2 m
 ▲▲▲ 30 m → 75 m



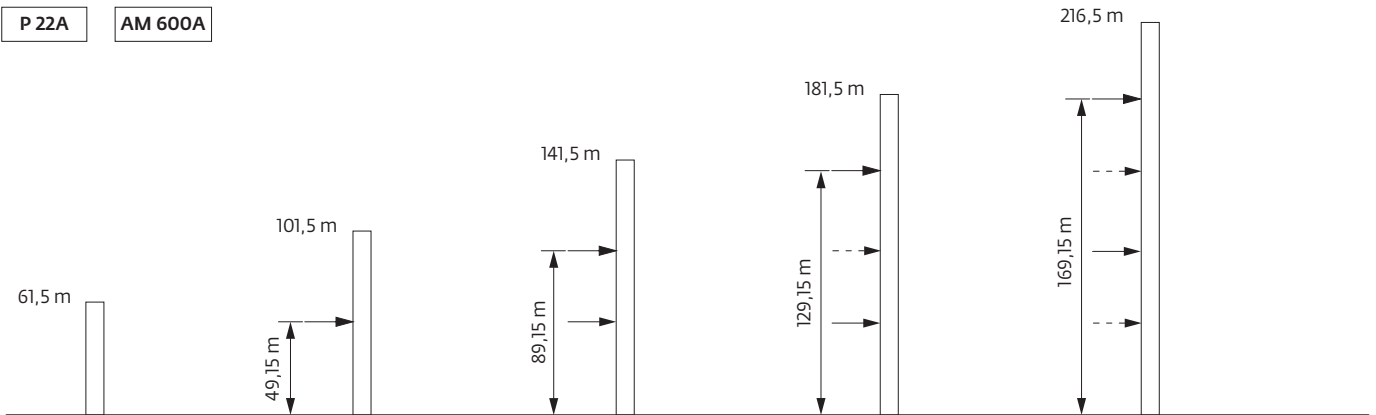
▲▲▲	H (m)	□ M619C	□ M619A	□ M619H	□ M619P	
	30 m	64,5	2	10	1	1
	35 m	57,8		10	1	1
	40 m	64,5	2	10	1	1
	45 m	61,2	1	10	1	1
	50 m	57,8		10	1	1
	55 m	54,5	2	8	1	1
	60 m	54,5	2	8	1	1
	65 m	51,2	1	8	1	1
	70 m	51,2	1	8	1	1
	75 m	48,7		8	1	1

内爬塔机



附着

P 22A AM 600A

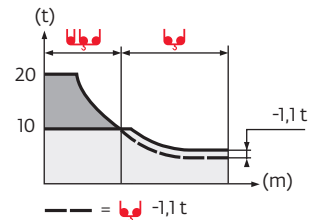


H > 216,5m

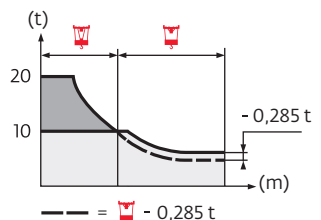
负荷曲线





75 m	3,4	▶	14,5	15	17	20	22	25	25,3	27,8	30	32	35	37	40	42	45	47	50	52	55	57	60	62	65	67	70	72	75	m
▲▲▲			20	19,2	16,5	13,5	11,9	10,1	10	-10	9,1	8,4	7,6	7,1	6,4	6	5,5	5,2	4,8	4,6	4,2	4	3,8	3,6	3,3	3,2	3	2,9	2,7	t
70 m	3,4	▶	15	17	20	22	25	26,3	28,8	30	32	35	37	40	42	45	47	50	52	55	57	60	62	65	67	70	m			
▲▲▲			20	17,2	14,1	12,5	10,7	10	-10	9,5	8,8	7,9	7,4	6,7	6,3	5,8	5,5	5,1	4,8	4,5	4,3	4	3,8	3,6	3,4	3,2	t			
65 m	3,4	▶	15,6	17	20	22	25	27	27,5	30	32	35	37	40	42	45	47	50	52	55	57	60	62	65	m					
▲▲▲			20	18,1	14,9	13,2	11,3	10,2	10	-10	9,3	8,3	7,8	7,1	6,7	6,1	5,8	5,4	5,1	4,8	4,5	4,2	4,1	3,8	t					
60 m	3,4	▶	16,8	20	22	25	27	29	29,7	32,4	35	37	40	42	45	47	50	52	55	57	60	m								
▲▲▲			20	16,3	14,5	12,4	11,3	10,3	10	-10	9,1	8,6	7,8	7,3	6,8	6,4	5,9	5,6	5,3	5	4,7	t								
55 m	3,4	▶	17,4	20	22	25	27	30	30,7	33,6	35	37	40	42	45	47	50	52	55	m										
▲▲▲			20	17	15,1	13	11,8	10,3	10	-10	9,5	8,9	8,1	7,7	7,1	6,7	6,2	5,9	5,5	t										
50 m	3,4	▶	17,9	20	22	25	27	30	31,5	34,4	35	37	40	42	45	47	50	m												
▲▲▲			20	17,5	15,6	13,4	12,2	10,7	10	-10	9,8	9,2	8,4	7,9	7,3	6,9	6,3	t												
45 m	3,4	▶	18,5	20	22	25	27	30	32	32,7	35,7	37	40	42	45	m														
▲▲▲			20	18,2	16,3	14	12,7	11,1	10,3	10	-10	9,6	8,7	8,3	7,6	t														
40 m	3,4	▶	18,8	20	22	25	27	30	32	33,2	36,2	37	40	m																
▲▲▲			20	18,6	16,6	14,2	12,9	11,3	10,5	10	-10	9,8	8,9	t																
35 m	3,4	▶	18,9	20	22	25	27	30	32	34	35	m																		
▲▲▲			20	18,7	16,7	14,3	13	11,4	10,5	9,8	-10	t																		
30 m	3,4	▶	18,8	20	22	25	27	30	m																					
▲▲▲			20	18,6	16,6	14,3	13	11,4	t																					










75 m	2,4	▶	14,7	15	17	20	22	25,9	26,5	28	30	32	35	37	40	42	45	47	50	52	55	57	60	62	65	67	70	72	75	m
▲▲▲			20	19,5	16,8	13,8	12,3	10	-10	9,3	8,6	7,9	7	6,5	5,9	5,5	5	4,7	4,3	4	3,7	3,5	3,2	3	2,8	2,65	2,45	2,35	2,15	t
70 m	2,4	▶	15,1	17	20	22	25	26,8	27,4	30	32	35	37	40	42	45	47	50	52	55	57	60	62	65	67	70	m			
▲▲▲			20	17,4	14,3	12,8	10,9	10	-10	8,9	8,2	7,3	6,8	6,2	5,8	5,2	4,9	4,5	4,3	3,9	3,7	3,4	3,2	3	2,85	2,65	t			
65 m	2,4	▶	15,8	17	20	22	25	27	28,1	28,8	32	35	37	40	42	45	47	50	52	55	57	60	62	65	m					
▲▲▲			20	18,4	15,1	13,5	11,6	10,5	10	-10	8,8	7,8	7,3	6,6	6,2	5,6	5,3	4,9	4,6	4,3	4	3,7	3,6	3,3	t					
60 m	2,4	▶	16,9	20	22	25	27	30	30,2	30,9	35	37	40	42	45	47	50	52	55	57	60	m								
▲▲▲			20	16,4	14,7	12,6	11,5	10,1	10	-10	8,6	8	7,3	6,8	6,2	5,9	5,4	5,1	4,8	4,5	4,2	t								
55 m	2,4	▶	17,6	20	22	25	27	30	31,6	32,3	35	37	40	42	45	47	50	52	55	m										
▲▲▲			20	17,3	15,5	13,3	12,1	10,7	10	-10	9,1	8,5	7,7	7,3	6,6	6,3	5,8	5,5	5,1	t										
50 m	2,4	▶	18,1	20	22	25	27	30	32,4	33,2	35	37	40	42	45	47	50	m												
▲▲▲			20	17,8	15,9	13,7	12,5	11	10	-10	9,4	8,8	8	7,5	6,9	6,5	6	t												
45 m	2,4	▶	18,8	20	22	25	27	30	32	33,6	34,4	37	40	42	45	m														
▲▲▲			20	18,6	16,6	14,3	13,1	11,5	10,6	10	-10	9,2	8,3	7,8	7,2	t														
40 m	2,4	▶	19	20	22	25	27	30	32	34,2	35	37	40	m																
▲▲▲			20	18,9	16,9	14,6	13,3	11,7	10,8	10	-10	9,3	8,5	t																
35 m	2,4	▶	19	20	22	25	27	30	32	34,2	35	m																		
▲▲▲			20	18,9	16,9	14,6	13,3	11,7	10,8	10	-10	t																		
30 m	2,4	▶	19,1	20	22	25	27	30	m																					
▲▲▲			20	19	17	14,7	13,4	11,8	t																					




压重

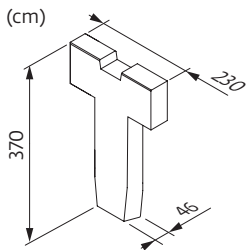
 2 m	VB 22 	H (m)	63,3	60	56,6	51,6	46,6	41,6	36,6	31,6	26,6	21,6	16,6	11,6
		 (t)	 (t)	132	120	108	96	96	96	96	96	96	96	96

起重臂重量&平衡臂配重

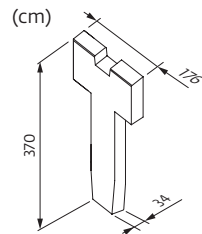
	 (kg) (+/- 5%)			100 LVF 50 		
				4850 kg	3150 kg	 (kg)
75 m	23510	23120	24065	6	0	29 100
70 m	23180	22790	23735	5	1	27 400
65 m	22790	22400	23345	5	1	27 400
60 m	21730	21340	22285	5	0	24 250
55 m	21690	21300	22245	5	0	24 250
50 m	21085	20695	21640	4	1	22 550
45 m	20025	19635	20580	3	2	20 850
40 m	19520	19130	20075	4	0	19 400
35 m	18460	18070	19015	6	0	29 100
30 m	17245	16855	17800	4	2	25 700

 150 LVF 50 / 180 LVF 50

CCE - 4850kg

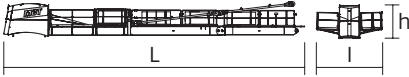
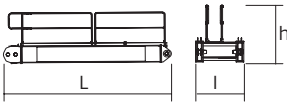
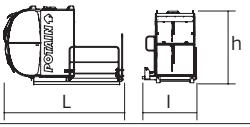
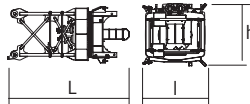
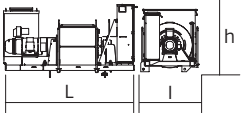
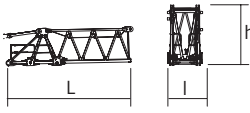
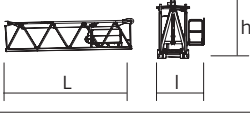
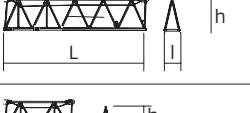

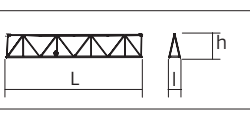

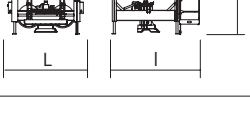
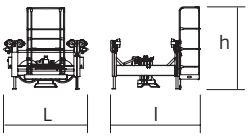
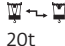


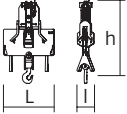
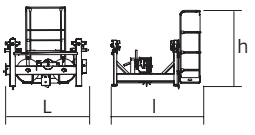
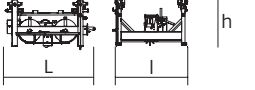
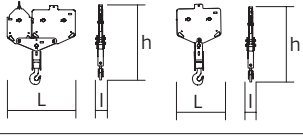
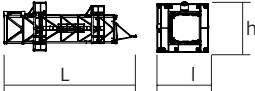
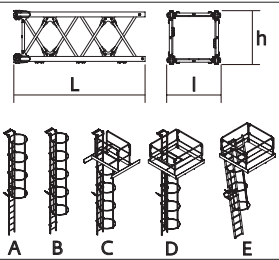
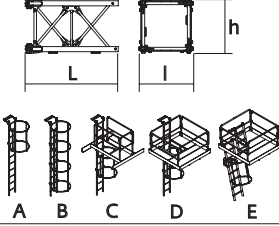
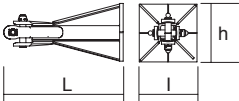
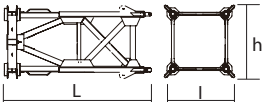
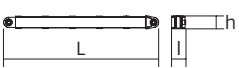
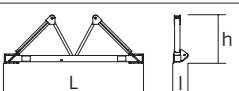
CCD - 3150kg



尺寸重量表

塔机回转部分 :  75 m -  100 LVF

塔机回转部分		L (m)	l (m)	h (m)	kg (+/- 5%)
平衡臂		20,4 17,2 14,8	4,4 4,4 4,4	3 1,75 1,75	9950 9500 8000
平衡臂		5,55	1,5	1,7	1500
驾驶室	 V140S 太空舱	3,9	1,95	2,47	1115
回转机构		4,8	2,45	2,3	9850
起升机构 (+钢丝绳)		3,2 4,27	1,6 2	1,9 2,34	4645 9230
起重臂节	 ①	8,7	1,6	2,5	6350
起重臂节	 ②	10,5	2,4	2,45	5400
起重臂节	 ③ ④ ⑥	10,5 10,5 10,5	1,4 1,4 1,4	2,42 2,42 2,42	3075 2275 1565
起重臂节	 ⑤	5,4	1,4	2,42	1060
起重臂节	 ⑦	5,3	1,4	2,3	605
起重臂节	 ⑧	10,2	1,4	1,8	1100
起重臂节	 ⑨ ⑩	5,2 5,2	1,4 1,4	1,8 1,8	390 330
小车	  20t	2,2	2,3	2,1	630

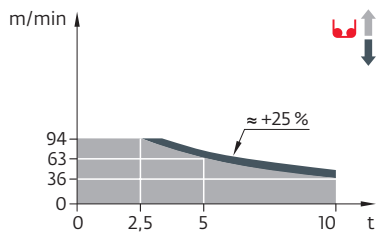
塔机回转部分		L (m)	I (m)	h (m)	kg (+/- 5%)	
吊钩		1,5	0,5	2,3	730	
前小车		2,1	2,3	1,9	465	
		2,1	2,3	1,9	465	
后小车		1,9	1,8	1,2	450	
吊钩		1,9	0,3	2,3	1000	
		1,2	0,2	2,0	505	
顶升装置						
顶升套架		□ 2 m	11,50	4,21	4,36	8235
塔身节						
M619 A		□ 2 m	5,32	2,13	2,13	3517
		A	-	-	-	47
		B	-	-	-	55
		C	-	-	-	122
		D	-	-	-	165
		E	-	-	-	148
M619 C		□ 2 m	3,66	2,13	2,13	2492
		A	-	-	-	29
		B	-	-	-	41
		C	-	-	-	98
		D	-	-	-	140
		E	-	-	-	138
塔机底座						
固定支脚		P 22A	1,35	0,65	0,65	390
		R 22A	0,82	0,65	0,65	325
行走基节		VB 22	5,01	2,41	2,41	4720
斜撑		VB 22	4,51	0,29	0,29	420
底架		VB 22	6,7	0,7	2,31	1600

机构

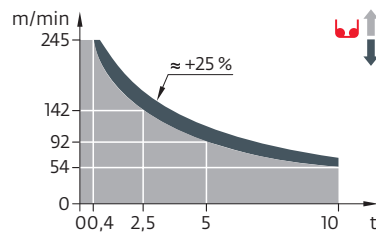
380 V - 50 Hz											ch - PS hp	kW			
	100 LVF 50 Optima	m/min	36	54	86	94	18	27	43	47	100	75	1018 m		
		t	10	6	3	2,5	20	12	6	5					
	150 LVF 50 Optima	m/min	54	68	92	142	245	28	37	53	88	122	150	110	1200 m
		t	10	7,5	5	2,5	0,4	20	15	10	5	2,1			
	10 DVF 10	m/min	0 → 80 (20 t) 0 → 100 (12 t) 0 → 110 (6 t)									10	7,4		
	RVF 172 Optima+	tr/min U/min rpm	0 → 0,8									2 x 10	2 x 7,5		
	VB22 RT 664 A2B - 2V	m/min	16 → 32									6 x 7	6 x 5,2		


















	IEC 60204-32		kVA
	380 V (+10% -10%) 50 Hz		100 LVF : 107 kVA 150 LVF: 147 kVA

100 LVF 50 Optima



150 LVF 50 Optima



-  上绕度
-  工作状态下的反力
-  非工作状态下的反力
-  起重机在无载荷、无配重、独立高度状态下的压重
-  总配重
-  13.4m卡车
-  40'立方集装箱
-  坚固的附着框
-  松开的附着框
-  起升
-  变幅
-  回转
-  行走
-  额定功率
-  电源控制功能：使“起升”速度与可用电源适配
-  参阅内爬
-  联系我们



此商业文件不承担法律责任，对于任何技术信息，请查阅相应说明书。



马尼托瓦克起重设备（中国）有限公司

工厂地址：江苏省张家港市经济开发区（南）区金塘路55号
 市场总部：上海市漕溪北路333号中金国际广场B座1103-1105室
 总机：021-6457 0066
 传真：021-6457 4985
 邮编：200030