

# Center of Gravity

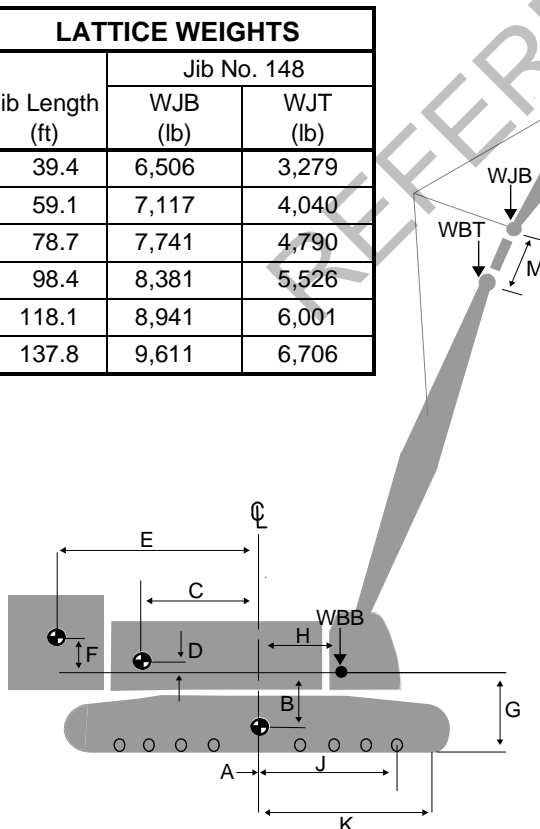
Boom No. B10:500  
with Fixed Position Counterweight

WEIGHT AND CENTER OF GRAVITY		
	Dimension (in.)	Weight (lb)
A	0.0	131,713
B	58.3	
C	80.2	71,256
D	13.2	
SERIES 0		
E	217.3	176,864
F	-0.4	
SERIES 1		
E	161.0	309,142
F	17.3	
SERIES 2		
E	161.0	397,327
F	29.1	
SERIES 3		
E	161.0	441,419
F	35.1	

REFERENCE DIMENSIONS (in.)	
G	85.7
H	60.0
J	137.7
K	167.7
M	18.0
N	133.9
48 in. Pads	
P	20.3
R	43.1
T	47.3
60 in. Pads	
P	53.0
R	57.1
T	60.0

LATTICE WEIGHTS		
Boom Length (ft)	Boom No. B10:500	
	WBB (lb)	WBT (lb)
98.4	47,167	34,642
118.1	51,346	35,903
137.8	54,809	37,376
157.5	58,255	39,406
177.2	60,916	40,166
196.9	63,935	42,645
216.5	66,389	43,622
236.2	69,177	46,343
255.9	71,712	47,729
275.6	74,488	50,462
295.3	76,561	51,036

LATTICE WEIGHTS		
Jib Length (ft)	Jib No. 148	
	WJB (lb)	WJT (lb)
39.4	6,506	3,279
59.1	7,117	4,040
78.7	7,741	4,790
98.4	8,381	5,526
118.1	8,941	6,001
137.8	9,611	6,706



Note 1: Weight of all load blocks, hooks, weight ball, slings, hoist lines, etc., beneath boom and jib point sheaves is not considered part of boom and jib weights. All items suspended from boom or jib must be considered part of the load.

Note 2: Consult proper crane capacity chart for lifting capacities and allowable boom and jib combinations.

**Not to be used for crane rating purposes.**

