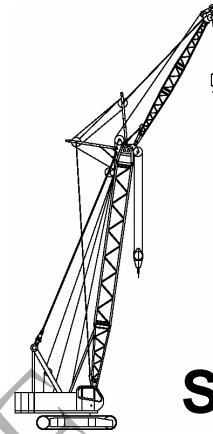




Liftcrane Boom Capacities With Luffing Jib Attached

**Luffing Jib Attached at 23 Degree Boom
to Luffing Jib Offset Angle**
63,500 LB. Crane Counterweight
14,700 LB. Carbody Counterweight (S/N 10001001 thru 10001037)
16,100 LB. Carbody Counterweight (S/N 10001038 and greater)
Extended Position Crawlers
360 Degree Rating

**Meets
ANSI B30.5
Requirements**



**10000
SERIES 3**

LIFTING CAPACITIES:

- Rated loads included in the charts are the maximum allowable for freely suspended loads at the given boom lengths, boom angles, luffing jib lengths, luffing jib angles, and load radii. The rated loads have determined for the machine standing level on a firm supporting surface under ideal conditions. The user must limit or de-rate rated loads to allow for adverse conditions (such as soft or uneven ground, out-of-level conditions, wind, side loads, pendulum action, jerking or sudden stopping of loads, inexperience of personnel, and multiple machine lifts).
- Capacities do not exceed 75% of minimum tipping loads.
- The total load that can be lifted over the luffing jib is limited by the rated jib loads.
- Attempting to lift more than rated loads may cause machine to tip or collapse. Do not tip machine to determine capacity.
- Do not attempt to lift where no radius on load chart is listed as crane may tip or collapse.
- Weight of hooks, hook blocks, slings and other lifting devices beneath boom and luffing jib point sheaves are part of the total load. Their total weight must be subtracted from the rated load to obtain the weight that can be lifted.
- Load radius is horizontal distance from axis of rotation to center of gravity of the freely suspended load. Boom angle is angle between horizontal and centerline of boom butt and inserts, and is an indication of radius. In all cases, operating radius shall govern capacity.
- Least stable position is over the side.
- Boom point elevation is vertical distance from ground level to centerline of boom point shaft.
- The total load that can be lifted over an auxiliary sheave is value 850 lbs. deducted from rated load for the jib without auxiliary sheave, but should not exceed 25,000 lbs. See lift crane capacities with luffing jib.
- When lifting over jib point with auxiliary sheave or pin connected boom point sheave attached, rated loads for the jib must be deducted as shown below. See lift crane capacities with luffing jib.

	Auxiliary sheave	Pin connected boom point sheave
Deductions (lbs)	850	480

Three parts of hoist line is not recommended for lifting.

- Machine travel with load (pick and carry).
 - Travel with crane upperworks in-line with crawlers. Grade in any direction must not exceed 1 percent (0.5 degrees).
 - Travel surface must be firm, level and uniformly supporting. Capacity charts are based on static conditions; therefore judgment must be used to allow for dynamic effects of traveling with load. Carry load as close to ground as possible. Stabilize load with taglines. Travel slowly and smoothly to avoid shock loading boom, jib and rigging.
- Lifting capacities listed apply only to the machine as originally manufactured and designed. Modifications to this machine or use of equipment other than that specified can reduce operating capacity.

Hoist Reeving For Auxiliary Sheave (Upper Point) Loads

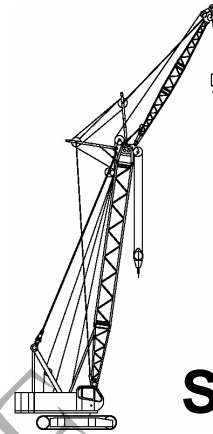
No. of Parts of Line	1
Maximum Loads (lbs)	25,000



Liftcrane Boom Capacities With Luffing Jib Attached

**Luffing Jib Attached at 23 Degree Boom
to Luffing Jib Offset Angle**
63,500 LB. Crane Counterweight
14,700 LB. Carbody Counterweight (S/N 10001001 thru 10001037)
16,100 LB. Carbody Counterweight (S/N 10001038 and greater)
Extended Position Crawlers
360 Degree Rating

**Meets
ANSI B30.5
Requirements**



**10000
SERIES 3**

OPERATING CONDITION:

- The machine must be reeved and set-up as stated in the Operators Manual. If this manual is missing, obtain replacement.
 - Boom backstops are required for all boom lengths.
 - Gantry must be fully raised position for all operation.
 - Crawlers must be fully extended and be locked in position.
 - The crane must be leveled to within 1% on a firm supporting surface.
 - Refer to operators manual for operating guidelines.
- Boom hoist wire rope: 492 feet, 5/8 inch, 6 x 31, WS, IWRC O/O, Minimum breaking strength: 47,200 lbs.

Minimum weight of hook block required for lowering

No. of Parts of Line	1	2	4
Weight (lbs)	600	1,200	1,500

- For Serial Numbers 10001001 thru 10001037:** Machine equipped with 20 ft. 8 in. crawlers, 36 in. treads, 12 parts of boom hoist reeving, 63,500 lbs. crane counterweight and two 7,350 lbs. carbody counterweights.

For all other Serial Numbers: Machine equipped with 20 ft. 8 in. crawlers, 36 in. treads, 12 parts of boom hoist reeving, 63,500 lbs. crane counterweight and two 8,050 lbs. carbody counterweights.

Maximum Boom and Jib Lengths Lifted Unassisted			
Over End of Blocked Crawlers		Over End of Crawlers	
Boom Length	Luffing Jib Length	Boom Length	Luffing Jib Length
55 ft	50 ft - 170 ft	50 ft	50 ft - 170 ft
65 ft	50 ft - 170 ft	65 ft	50 ft - 170 ft
75 ft	50 ft - 170 ft	75 ft	50 ft - 170 ft
85 ft	50 ft - 170 ft	—	—
95 ft	50 ft - 170 ft	—	—
105 ft	50 ft - 150 ft (a)	—	—
115 ft	50 ft - 100 ft (b)	—	—
(a) Pin connected boom point sheave (lower boom point) can not be attached with 140 ft. or 150 ft. luffing jib length. (b) Pin connected boom point sheave (lower boom point) can not be attached with 90 ft. or 100 ft. luffing jib length.			

Operation of this equipment in excess of rated loads or disregard of instruction voids the warranty.

Refer to The Operators Manual for boom and luffing jib raising procedure.

- For Serial Numbers 10001001 thru 10001037:** Front and rear load hoist drum wire rope: 1.00 inch, 6 x 25, FI, IWRC, C/O, Minimum breaking strength: 103,400 lbs. Front Drum: 771 feet, Rear Drum: 525 feet.
For all other Serial Numbers: Front and rear load hoist drum wire rope: 26 mm, 6 x 29, FI, IWRC, C/O, Minimum breaking strength: 120,000 lbs. Front Drum: 771 feet, Rear Drum: 525 feet.



Liftcrane Boom Capacities With Luffing Jib Attached

Luffing Jib Attached at 23 Degree Boom
to Luffing Jib Offset Angle

63,500 LB. Crane Counterweight

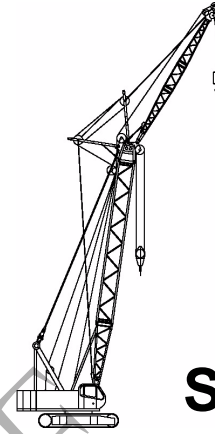
14,700 LB. Carbody Counterweight (S/N 10001001 thru 10001037)

16,100 LB. Carbody Counterweight (S/N 10001038 and greater)

Extended Position Crawlers

360 Degree Rating

Meets
ANSI B30.5
Requirements



**10000
SERIES 3**

Load Radius (ft)	Boom Angle (deg)	Boom Point Elev. (ft)	Jib Lenght (ft)													Load Radius (ft)
			50	60	70	80	90	100	110	120	130	140	150	160	170	
55 Ft. Boom																
15	82.0	58.4	90,000	90,000	88,400	82,200	76,200	74,900	73,600	67,000	60,800	53,300	47,800	39,600	32,100	15
16	80.9	58.2	90,000	90,000	88,400	82,200	76,200	74,900	73,600	67,000	60,800	53,300	47,800	39,600	32,100	16
17	79.8	58.0	90,000	90,000	88,400	82,200	76,200	74,900	73,600	67,000	60,800	53,300	47,800	39,600	32,100	17
18	78.7	57.7	90,000	86,800	82,400	76,900	71,800	70,600	69,400	63,700	58,200	51,500	46,700	39,600	32,100	18
19	77.7	57.4	81,800	77,100	72,700	67,400	62,400	61,400	60,400	54,600	49,300	42,900	38,300	31,500	25,100	19
20	76.6	57.1	73,400	69,000	64,800	59,500	54,900	53,800	52,600	47,100	42,100	35,900	31,500	24,900	18,700	20
22	74.4	56.4	60,100	56,000	52,000	46,900	42,500	41,500	40,500	35,200	30,400	24,600	20,500	14,300	8,500	22
24	72.1	55.6	50,000	46,000	42,300	37,400	33,200	32,300	31,300	26,400	21,800	16,300	12,300	6,300		24
26	69.9	54.8	42,300	38,300	34,800	30,200	26,200	25,300	24,400	19,600	15,200	9,900				26
28	67.6	53.8	35,900	32,100	28,600	24,200	20,200	19,400	18,500	13,800	9,700					28
30	65.3	52.7	30,600	27,100	23,500	19,400	15,600	14,700	13,800	9,400						30
32	62.9	51.6	26,400	22,700	19,600	15,400	11,600	10,900	10,100							32
34	60.4	50.3	22,700	19,100	16,000	12,100	8,300	7,600	6,800							34
36	57.9	48.8	19,400	16,000	13,000	9,000										36
38	55.3	47.2	16,700	13,400	10,300	6,600										38
40	52.6	45.5	14,300	11,000	8,100											40
45	45.2	40.2	9,400	6,600												45
65 Ft. Boom																
17	81.4	68.2	89,300	89,300	89,300	85,700	84,000	82,200	78,400	72,500	67,000	60,400	55,500	48,500	41,800	17
18	80.5	68.0	89,300	87,300	82,900	77,600	76,000	74,500	70,700	65,000	59,700	53,500	48,700	42,100	35,700	18
19	79.6	67.8	82,000	77,600	73,400	68,100	66,500	65,000	61,500	56,000	50,900	44,900	40,300	33,900	27,700	19
20	78.7	67.5	73,800	69,400	65,200	60,400	58,800	57,300	54,000	48,700	43,800	37,900	33,500	27,300	21,300	20
22	76.9	66.9	60,600	56,400	52,400	47,800	46,400	44,900	41,800	36,800	32,100	26,600	22,700	16,700	11,200	22
24	75.0	66.3	50,400	46,500	42,700	38,300	37,000	35,700	32,600	28,000	23,500	18,300	14,500	8,800		24
26	73.2	65.6	42,500	38,500	35,200	30,800	29,600	28,400	25,500	20,900	16,700	11,600	8,100			26
28	71.3	64.8	36,100	32,600	29,300	25,100	23,900	22,700	19,800	15,400	11,400	6,600				28
30	69.4	63.9	30,800	27,300	24,000	20,000	18,800	17,600	14,900	10,800	7,000					30
32	67.4	63.0	26,400	22,900	19,800	16,000	14,800	13,600	11,200	7,000						32
34	65.5	61.9	22,700	19,400	16,300	12,500	11,400	10,300	7,900							34
36	63.5	60.8	19,600	16,300	13,400	9,700	8,700	7,700								36
38	61.4	59.6	16,700	13,600	10,800	7,200										38
40	59.3	58.2	14,500	11,400	8,500											40
45	53.8	54.4	9,400	6,600												45
75 Ft. Boom																
19	81.0	78.0	82,200	77,800	73,600	68,500	67,200	65,900	62,400	57,100	52,000	46,300	41,800	35,500	29,700	19
20	80.2	77.8	73,600	69,400	65,400	60,600	59,300	57,900	54,600	49,300	44,700	39,000	34,800	28,600	23,100	20
22	78.7	77.3	60,600	56,600	52,900	48,200	47,000	45,800	42,700	37,900	33,500	28,200	24,200	18,500	13,200	22
24	77.1	76.7	50,400	46,700	43,200	38,800	37,700	36,600	33,500	28,800	24,600	19,800	16,000	10,500		24
26	75.5	76.1	42,500	39,000	35,500	31,500	30,300	29,100	26,400	22,000	18,000	13,200	9,700			26
28	73.9	75.5	36,100	32,600	29,300	25,300	24,200	23,100	20,500	16,300	12,500	7,900				28
30	72.3	74.7	30,800	27,500	24,400	20,500	19,500	18,500	15,800	11,900	8,100					30
32	70.6	73.9	26,600	23,300	20,200	16,500	15,500	14,500	12,100	8,100						32
34	69.0	73.1	22,900	19,600	16,700	13,200	12,200	11,200	8,800							34
36	67.3	72.1	19,600	16,500	13,600	10,100	9,100	8,100								36
38	65.6	71.1	16,900	13,800	11,000	7,700										38
40	63.9	70.0	14,500	11,400	8,800											40
45	59.4	66.9	9,700	6,800												45



Liftcrane Boom Capacities With Luffing Jib Attached

Luffing Jib Attached at 23 Degree Boom
to Luffing Jib Offset Angle

63,500 LB. Crane Counterweight

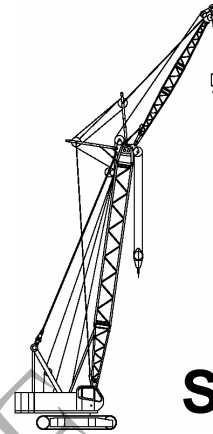
14,700 LB. Carbody Counterweight (S/N 10001001 thru 10001037)

16,100 LB. Carbody Counterweight (S/N 10001038 and greater)

Extended Position Crawlers

360 Degree Rating

Meets
ANSI B30.5
Requirements



**10000
SERIES 3**

Load Radius (ft)	Boom Angle (deg)	Boom Point Elev. (ft)	Jib Lenght (ft)													Load Radius (ft)
			50	60	70	80	90	100	110	120	130	140	150	160	170	
85 Ft. Boom																
20	81.4	88.0	73,800	69,600	65,900	61,000	59,800	58,600	55,300	50,200	45,600	40,100	36,100	30,200	24,600	20
22	80.0	87.6	60,600	56,600	53,100	48,700	47,500	46,300	43,200	38,500	34,100	29,100	25,300	19,600	14,500	22
24	78.6	87.1	50,400	46,900	43,400	39,200	38,100	37,000	34,100	29,700	25,500	20,700	17,100	11,900	7,000	24
26	77.3	86.6	42,500	39,000	35,700	31,700	30,700	29,700	26,900	22,700	18,700	14,100	10,800			26
28	75.9	86.0	36,100	32,600	29,500	25,700	24,800	23,800	21,100	16,900	13,400	8,800				28
30	74.4	85.3	31,000	27,500	24,600	20,900	19,900	18,900	16,500	12,500	9,000					30
32	73.0	84.7	26,600	23,300	20,500	16,900	15,900	14,900	12,700	8,800						32
34	71.6	83.9	22,900	19,800	16,900	13,400	12,500	11,600	9,400							34
36	70.1	83.1	19,600	16,500	13,800	10,300	9,400	8,500	6,300							36
38	68.7	82.2	16,900	13,800	11,200	7,900	7,100	6,300								38
40	67.2	81.3	14,500	11,400	9,000											40
45	63.4	78.7	9,700	6,800												45
95 Ft. Boom																
22	81.1	97.8	60,600	56,600	53,100	52,000	50,900	46,700	43,600	39,000	34,800	29,700	26,000	20,500	15,600	22
24	79.9	97.4	50,400	46,900	43,400	42,400	41,400	37,200	34,600	30,200	26,200	21,300	17,800	12,700	8,100	24
26	78.6	96.9	42,500	39,000	35,900	34,900	33,900	29,900	27,300	23,100	19,400	14,900	11,600	6,600		26
28	77.4	96.4	36,100	32,800	29,700	28,700	27,700	24,000	21,600	17,600	14,100	9,700	6,600			28
30	76.1	95.8	30,800	27,700	24,600	23,800	22,900	19,400	16,900	13,200	9,700					30
32	74.9	95.2	26,400	23,100	20,200	19,400	18,500	15,200	13,000	9,200						32
34	73.6	94.5	22,700	19,600	16,700	15,900	15,200	11,900	9,700							34
36	72.3	93.8	19,600	16,500	13,800	13,100	12,300	9,000	6,800							36
38	71.0	93.1	16,700	13,600	11,200	10,300	9,400	6,300								38
40	69.7	92.3	14,100	11,400	8,800	8,000	7,200									40
45	66.4	90.0	9,200	6,600												45
105 Ft. Boom																
22	81.9	107.9	60,400	56,600	55,500	54,400	50,900	46,700	43,800	39,400	35,200					22
24	80.8	107.6	50,400	46,700	45,700	44,700	41,400	37,400	34,800	30,600	26,600					24
26	79.7	107.2	42,500	39,000	38,000	37,000	33,900	30,200	27,700	23,500	19,800					26
28	78.6	106.7	35,900	32,600	31,700	30,800	28,000	24,200	21,800	18,000	14,500					28
30	77.5	106.2	30,800	27,500	26,600	25,700	23,100	19,600	17,100	13,400	10,100					30
32	76.4	105.6	26,400	23,300	22,400	21,600	18,900	15,600	13,400	9,700	6,600					32
34	75.2	105.0	22,700	19,800	18,900	18,000	15,400	12,300	10,100	6,600						34
36	74.1	104.4	19,400	16,500	15,700	14,900	12,300	9,200	7,200							36
38	72.9	103.7	16,500	13,600	12,800	12,100	9,700	6,600								38
40	71.8	103.0	14,300	11,400	10,800	10,100	7,700									40
45	68.8	101.0	9,200	6,600												45
115 Ft. Boom																
24	81.6	117.7	50,400	49,300	48,200	44,900										24
26	80.6	117.4	42,500	41,500	40,500	37,200										26
28	79.6	116.9	36,100	35,100	34,100	31,000										28
30	78.6	116.5	30,800	29,900	29,100	26,000										30
32	77.6	116.0	26,400	25,600	24,900	21,800										32
34	76.5	115.5	22,400	21,700	20,900	18,000										34
36	75.5	114.9	19,400	18,700	18,000	15,200										36
38	74.5	114.3	16,500	15,800	15,200	12,300										38
40	73.4	113.6	14,100	13,400	12,700	10,100										40
45	70.8	111.8	9,200	8,500	7,900											45