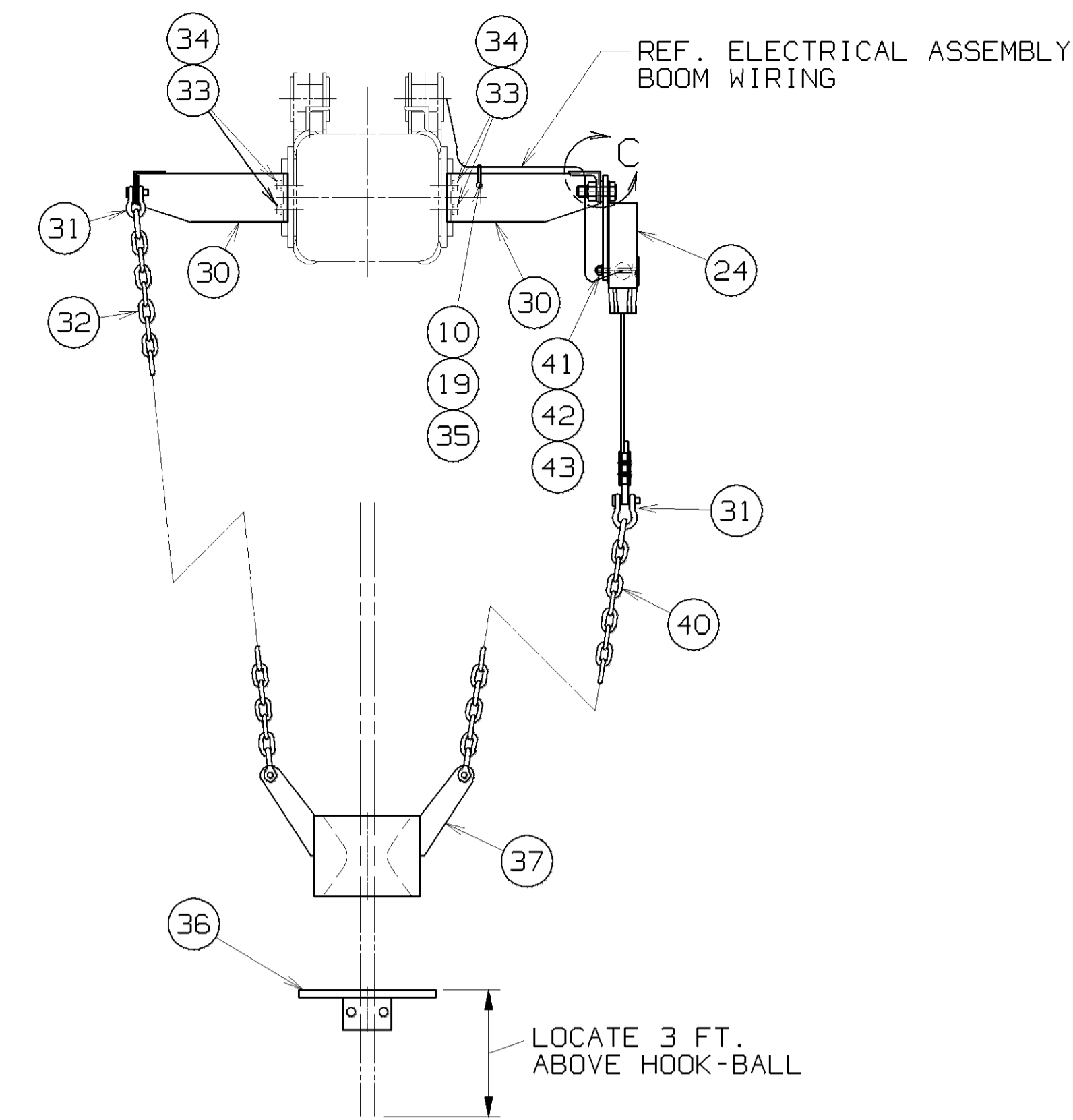


SECTION B-B  
SCALE: 3=1FT

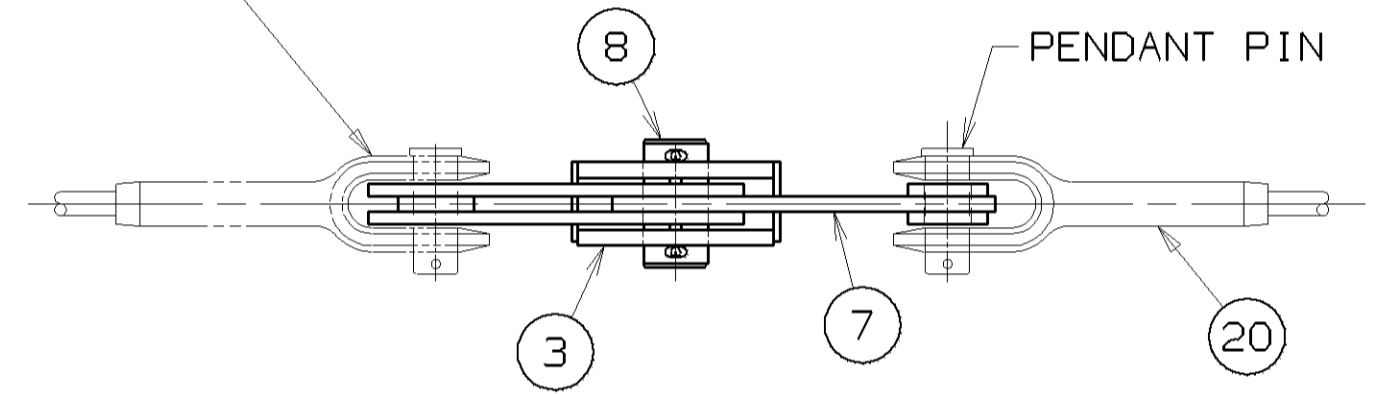


VIEW D-D

LOCATE 3 FT. ABOVE HOOK-BALL

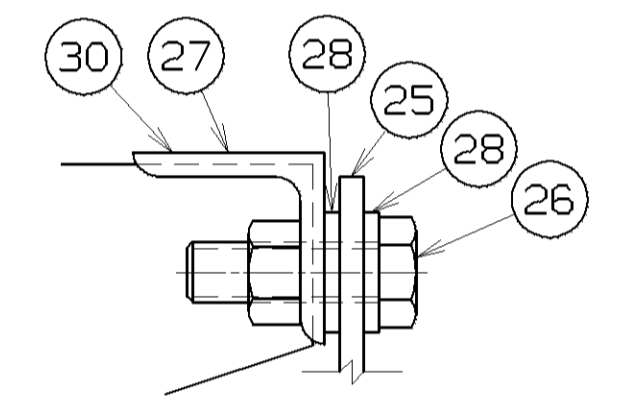
SEE JIB BACKSTAY ASSEMBLY

10 OR 11



VIEW A-A  
SCALE: 2=1FT

SEE TABLE FOR VARIOUS ADDITIONAL JIB LENGTHS.



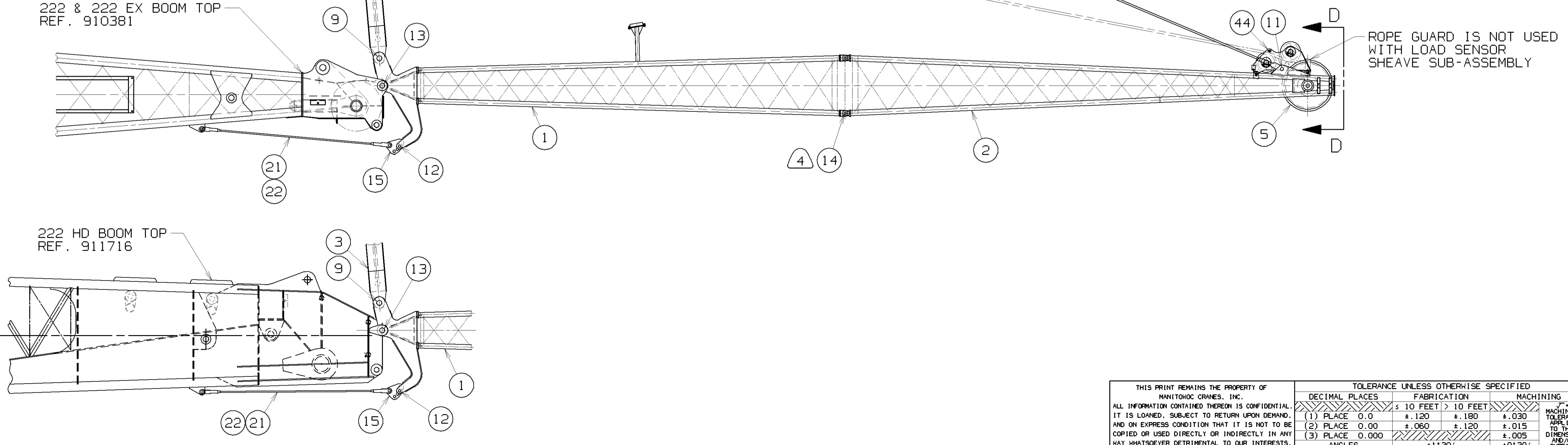
DETAIL "C"  
SCALE: 6 = 1 FT.

ANTI-TWO-BLOCK PIVOT

1. ASSEMBLE AS SHOWN.
2. TIGHTEN CAPSCREW UNTIL CONTACT IS MADE WITH WASHERS, BRACKET AND PIVOT PLATE. PIVOT PLATE MUST MOVE FREELY.
3. TIGHTEN NUT AGAINST REAR OF BRACKET TO CAPSCREW WHILE RESTRAINING CAPSCREW.
4. TEST PIVOT PLATE FOR FREEDOM OF MOVEMENT. IF PLATE DOES NOT PIVOT FREELY, LOOSEN NUT AND CAPSCREW, RE-LOCK, AND REPEAT STEP 4.

222 & 222 EX BOOM TOP  
REF. 910381

222 HD BOOM TOP  
REF. 911716



ROPE GUARD IS NOT USED WITH LOAD SENSOR SHEAVE SUB-ASSEMBLY

- 1 32 FT. -2.50 (9.8M)
- 2 0° JIB OFFSET
- 3 10°-20°-30° JIB OFFSET
- 4 ASSEMBLE PIN, ITEM 14. WITH HEAD ON OUTSIDE OF JIB.
- 5 FOR .875 WIRE ROPE.
- 6 GREASE LUBRICATION:  
BEFORE ASSEMBLING MAKE SURE ALL GREASE HOLES ARE OPEN. GREASE FITTING LOCATIONS ARE MARKED WITH THIS SYMBOL ▲. USE MOBILUX E.P. #2 GREASE (MCC CODE NO. 471197) OR EQUIVALENT.
- 7 WEIGHT IS AS FOLLOWS:  
40' JIB ... 1640 LBS.  
50' JIB ... 1864 LBS.  
60' JIB ... 2088 LBS.
- 8
- 9
- 10 163860 FOR 222 & 222 EX
- 11 A02320 FOR 222 HD

BILL OF MATERIAL						ASSEMBLIES USED ON
ITEM NO.	QTY	DESCRIPTION	LENGTH IN.	MATERIAL	CODE NO. OR DWG. NO.	
2285-0000 BASIC 30 FT. (9.1M) JIB ASSEMBLY						
1	1	JIB BUTT - 15 FT			911088	
2	1	JIB TOP - 15 FT			911090	
3	1	STRUT - 12 FT 6 IN			911091	
4	1	SHEAVE ASSEMBLY			911093	5
5	1	JIB POINT SHAFT ASSEMBLY			911097	5
6						
7	2	STRAP			73028	
8	2	PIN			73045	
9	2	PIN			75566	
10	5	CABLE TIE RETAINER			911075	
11	2	PIN			139133	
12	2	PIN			139812	
13	2	PIN			141621	
14	4	JIB JOINT PIN			163653	4
15	2	ADJUSTING LINK			163852	
16						
17	1	SLEEVE			913061	
18	1	JIB STRUT SHAFT			912899	
19	2	NUT NYLON LOCK .25-20 UNC-2B			548341	
20	2	BASIC PENDANT - DWG. 73026			277207	1
21	2	JIB STOP PENDANT - DWG. 76140			277210	3
22	2	JIB STOP PENDANT - DWG. 76140			277211	2
23	2	NUT ELASTIC STOP .62-11 UNC-2B			548345	
24	1	ANTI-TWO BLOCK SWITCH MOD & ASSEMBLY			911382	
25	1	ANTI-TWO BLOCK SWITCH MOUNTING PLATE			911033	
26	1	CAPSCREW HEX HD .62-18 UNF-2A X 2.00 LG.			613415	
27	1	NUT HEX .62-18 UNF-2B			547138	
28	2	WASHER FLAT .62			709480	
29						
30	2	MOUNTING BRACKET			911052	
31	4	ANCHOR SHACKLE			624633	
32	1	CHAIN #5/0 - 7FT			334101	
33	8	CAPSCREW HEX HD .37-16 UNC-2A X .62 LG.			612451	
34	8	WASHER LOCK .37			710304	
35	2	CAPSCREW HEX HD .25-20 UNC-2A X .75 LG.			612353	
36	1	LIFT BLOCK .88 ROPE			93705	
37	1	WEIGHT UPPER POINT OR JIB			169744	
38	2	SCREW HEX HD .62-11 UNC-2A X 5.50 LG.			612687	
39						
40	1	CHAIN #5/0 - 6 FT			334101	
41	2	CAPSCREW .31-18 UNC-2A X 2.25 LG			612415	
42	2	NUT HEX .31-18 UNC-2B			547112	
43	2	WASHER LOCK .31			710303	
44	1	LOAD SENSOR SHEAVE SUB-ASSEMBLY			195122	5
2285-0010 10 FT. (3.0M) INSERT						
45	1	INSERT 10 FT. (3.0M)			911089	
46	2	PENDANT 9 FT-9.0 (2.9M)- DWG. 73026			277208	

REQ'D FOR VARIOUS JIB LENGTHS		
ITEM NO.	45	46
JIB LENGTH	INSERT 10 FT. (3.0M) (181 LBS EA)	PENDANT 9 FT. - 9.00 (2.9M) (21.4 LBS EA)
40 FT.	1	2
50 FT.	2	4
60 FT.	3	6

SUPERSEDES 911092 OF 01-28-00

THIS PRINT REMAINS THE PROPERTY OF MANITOWOC CRANES, INC. ALL INFORMATION CONTAINED THEREIN IS CONFIDENTIAL. IT IS LOANED, SUBJECT TO RETURN UPON DEMAND, AND ON EXPRESS CONDITION THAT IT IS NOT TO BE COPIED OR USED DIRECTLY OR INDIRECTLY IN ANY MANNER WHATSOEVER DETRIMENTAL TO OUR INTERESTS.	TOLERANCE UNLESS OTHERWISE SPECIFIED			SCALE .5=1FT
	DECIMAL PLACES	FABRICATION	MACHINING	DR. BB
	(1) PLACE 0.0	± .120 ± .180	± .030	CK. BB
	(2) PLACE 0.00	± .060 ± .120	± .015	APP. JAZ
(3) PLACE 0.000	± .005	± .005		
ANGLES	± 1'30"	± 0'30"		

11-20-01	DATE	Manitowoc Cranes, Inc.	JIB ASSEMBLY, W/10 JIB
	PATTERN NO.	Manitowoc, Wisconsin	W/.75 SWAGED PENDANTS
		MODEL 222, 222EX, 222HD	FOR 20,000# SINGLE LINE PULL

911092