

RECOMMENDED FOR VARIOUS BOOM LENGTHS

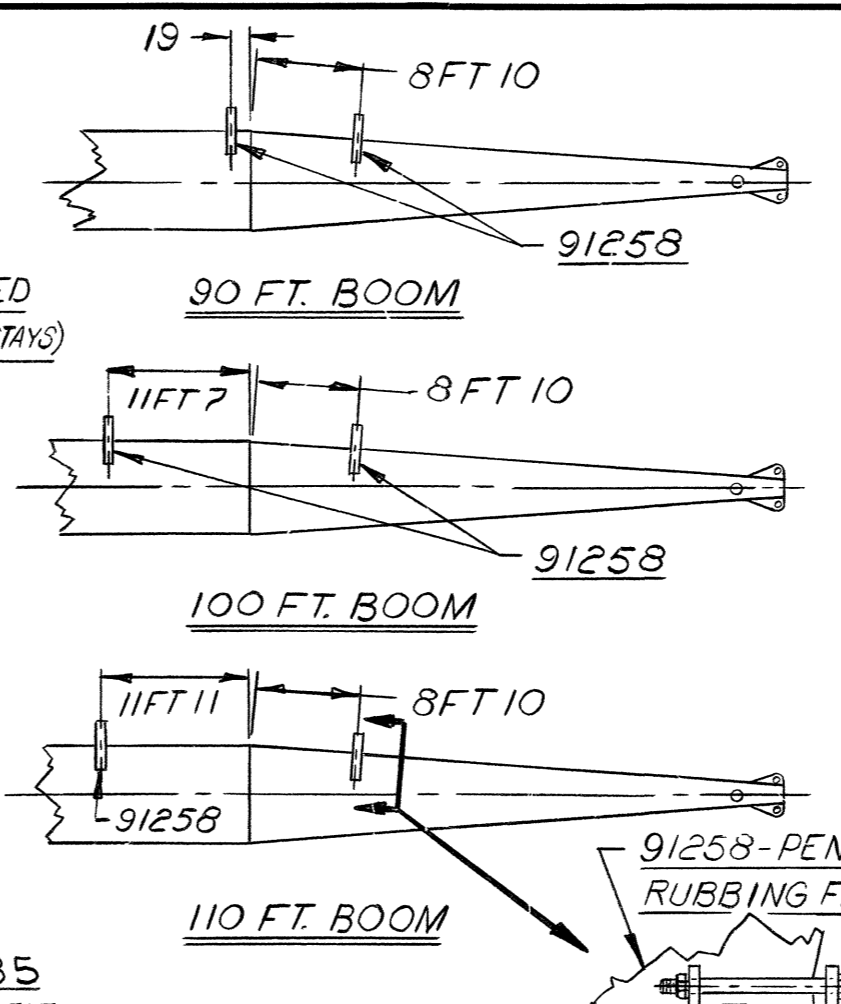
Table with columns for BOOM LENGTH, INSERT, PENDANT, WIRE ROPE, SPREADER, and PENDANT TIE BAR. Rows include 80 FT., 90 FT., 100 FT., 110 FT., 120 FT., 130 FT., 140 FT., 150 FT., and a section for 160 FT. AND OVER.

GENERAL NOTES:

- 1 PENDANT RUBBING FRAME - REQ'D FOR 90 FT THRU 110 FT. OF BM. WHEN TRAVELING WITH BM. & GANTRY DOWN. REMOVE FRAME FOR LENGTHS OVER 110 FT. (IN LINE TOP ONLY)
2 JIB BACKSTAY LUGS ON THE BM. BUTT ARE OPTIONAL AND USED ONLY WITH 70 FT. OF BM. JIB BACKSTAYS MUST BE DISCONNECTED BEFORE LOWERING EQUALIZER. (CANNOT BE USED WITH PENDANT TYPE B'STAYS)
3 SEE GANTRY ASSY FOR INSTRUCTIONS ON PINNING GANTRY IN THE INTERMEDIATE POSITION.

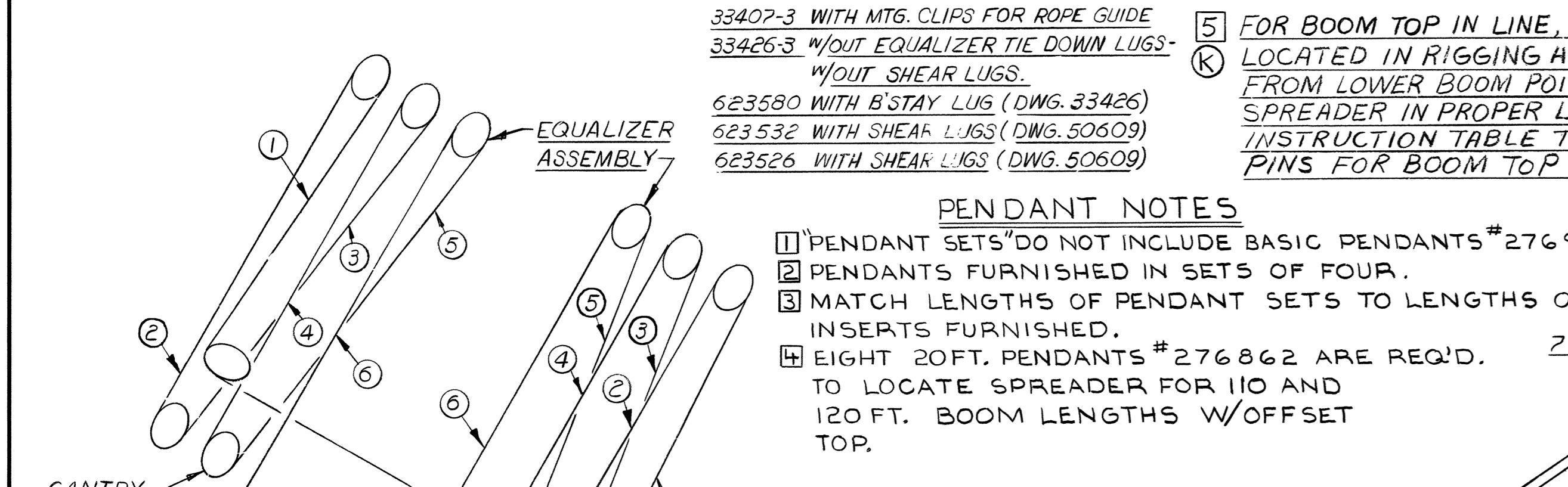
INSERT NOTES:

- 1 MAXIMUM NUMBER OF 10 FT INSERTS = 2
2 MAXIMUM NUMBER OF 20 FT INSERTS = 2
3 COMBINATION OF 10 FT & 20 FT INSERTS CANNOT EXCEED 2 - 10 FT + 1 - 20 FT. OR 1 - 10 FT. + 2 - 20 FT.
4 RECOMMENDED: - BOOMS OVER 80 FT SHOULD HAVE A MINIMUM OF (1) 20 FT. INSERT TO PROPERLY LOCATE LOWER WIRE ROPE GUIDE.
OPTIONAL: - 40 FT. INSERT CODE NO. 623535 OR 623579 MAY BE USED NEXT TO THE BUTT. (ROPE GUIDE WILL BE APPROX. 17 FT. FROM THE BUTT.)
5 INSERTS SHALL BE INSTALLED IN ORDER OF ASCENDING LENGTH.



BILL OF MATERIAL

Table listing parts for 70 FT. BASIC BOOM. Columns include QTY, DWG. NO., DESCRIPTION, REMARKS, and CODE NO. OR DWG. NO. Items include BOOM SIGN, BOOM BUTT, GANTRY ASSEMBLY, BOOM TOP, BUSHING, PIN, PENDANT LINK, LOWER BOOM POINT SHAFT ASSY, PENDANT LINK, REMOVABLE EQUALIZER RAIL, BOOM HANDLING LINK, WIRE ROPE GUIDE, EQUALIZER ASSY., and BASIC PENDANT.



PENDANT NOTES

- 1 PENDANT SETS DO NOT INCLUDE BASIC PENDANTS #276963
2 PENDANTS FURNISHED IN SETS OF FOUR.
3 MATCH LENGTHS OF PENDANT SETS TO LENGTHS OF INSERTS FURNISHED.
4 EIGHT 20 FT. PENDANTS #276862 ARE REQ'D. TO LOCATE SPREADER FOR 110 AND 120 FT. BOOM LENGTHS W/OFFSET TOP.

33407-3 WITH MTG. CLIPS FOR ROPE GUIDE 33426-3 W/O EQUALIZER TIE DOWN LUGS - W/O SHEAR LUGS. 623580 WITH B'STAY LUG (DWG. 33426) 623532 WITH SHEAR LUGS (DWG. 50609) 623526 WITH SHEAR LUGS (DWG. 50609)

FOR BOOM TOP IN LINE, PENDANT PIN #141408 MUST BE LOCATED IN RIGGING AT 81 FT 7 3/4 AND 121 FT 7 3/4 FROM LOWER BOOM POINT TO ALLOW INSERTION OF SPREADER IN PROPER LOCATION. SEE SPREADER INSTRUCTION TABLE TO LOCATE PINS FOR BOOM TOP OFFSET 4 1/2.

170 FT. BOOM SHOWN

GENERAL NOTES (CONT.)

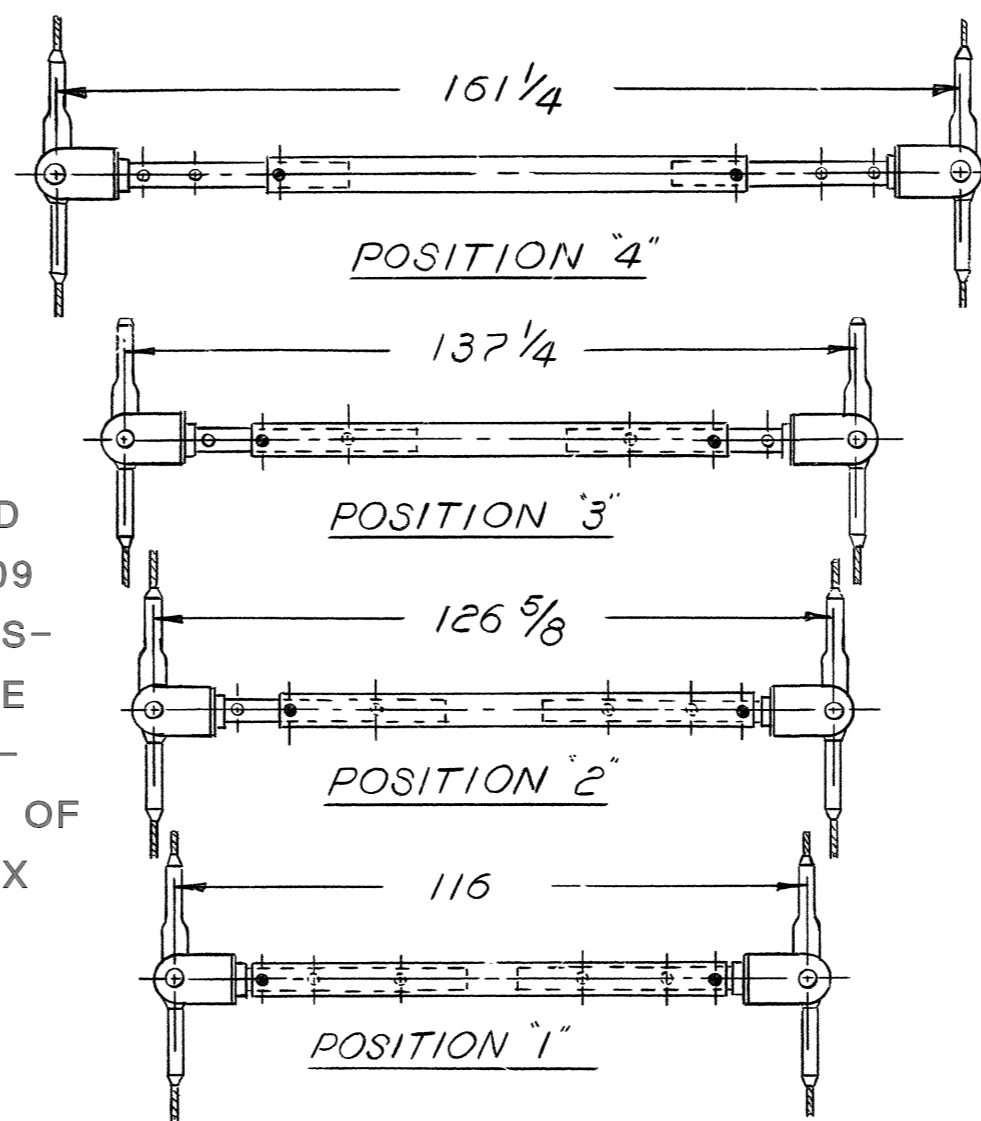
MACHINES EQUIPPED WITH GANTRY 49337 AND EQUALIZER 181348 (FRENCH CODE - 16 PART LINE) CAN BE REEVED FOR 12 PART LINE BY SKIPPING INBOARD SHEAVES AND REPLACING GUARDS 183309 AND 183310 WITH 182492 AND 182493 RESPECTIVELY. IF DESIRED, INBOARD SHEAVE ASSEMBLY AND (1) WASHER CAN BE REMOVED AND REPLACED WITH A SPACER OF THE FOLLOWING DIMENSIONS (6.00" I.D. X 4.00" O.D. X 3.00" WIDE).

TOP NOTE 65773 MAY BE REPLACED BY 81010628 OR 81013998

BUTT NOTE 48705 MAY BE REPLACED BY 81013608

ADD WASHERS TO EACH SIDE TO PREVENT SIDE PLAY IN BOOM. MAX. SIDE PLAY ALLOWED - 1/8

DIAGRAM SHOWING LOCATION OF PENDANT ATTACHMENT LUGS FOR BOOM HANDLING.



OPTIONAL PARTS

Table listing optional parts such as JIB ADAPTOR ASSY, SPREADER BRACKET, PIN, END PLATE, UPPER BOOM PT. SHAFT ASSY, UPPER BOOM PT. SHAFT ASSY (2-SHEAVE), UPPER BOOM PT. SHAFT ASSY (1-SHEAVE), PENDANT RUBBING FRAME, PENDANT ATTACHMENT LUG ASSY., PENDANT CONNECTING LINK, PLATFORM FOR BOOM BUTT, UNIVERSAL WIRE ROPE ANCHOR JOINT ASSY., BOOM PT. SHAFT ASSY. CONTAINER HANDLING, and JIB BACKSTAY ANCHOR.

OPTIONAL PARTS FOR 4 1/2 OFFSET TOP

Table listing optional parts for 4 1/2 offset top, including boom joint pin and link.

BOOM HANDLING INSTRUCTIONS

Table detailing boom handling instructions with columns for ATTACHMENT ARRANGEMENT, GANTRY MAX. LG. OF POSITION, BOOM LENGTH, and BOOM CONDITIONS OR LIMITATIONS. It covers equalizer pinned to rail, pendant attached to boom point, and equalizer pinned to rail for upper and lower holes.

SPREADER INSTRUCTIONS FOR BOOM TOP IN LINE - SEE NOTES 6. Table with columns for BOOM LENGTH, SPREADER REQUIRED, SPREADER POSITION, and LOCATION FROM LOWER BOOM POINT.

SPREADER INSTRUCTIONS FOR BOOM TOP OFFSET 4 1/2. Table with columns for BOOM LENGTH, SPREADER REQUIRED, SPREADER POSITION, and LOCATION FROM LOWER BOOM POINT.

#22C=22A BUTT + 22 INSERTS + 22C TOP