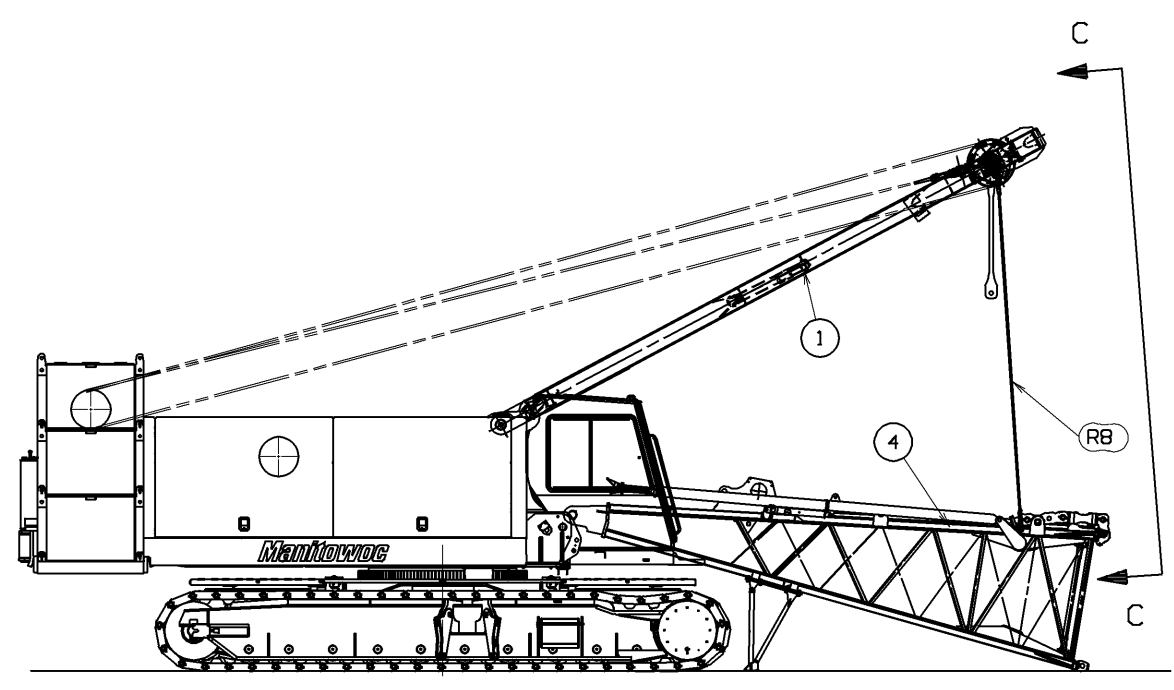


BOOM ASSEMBLY PROCEDURE

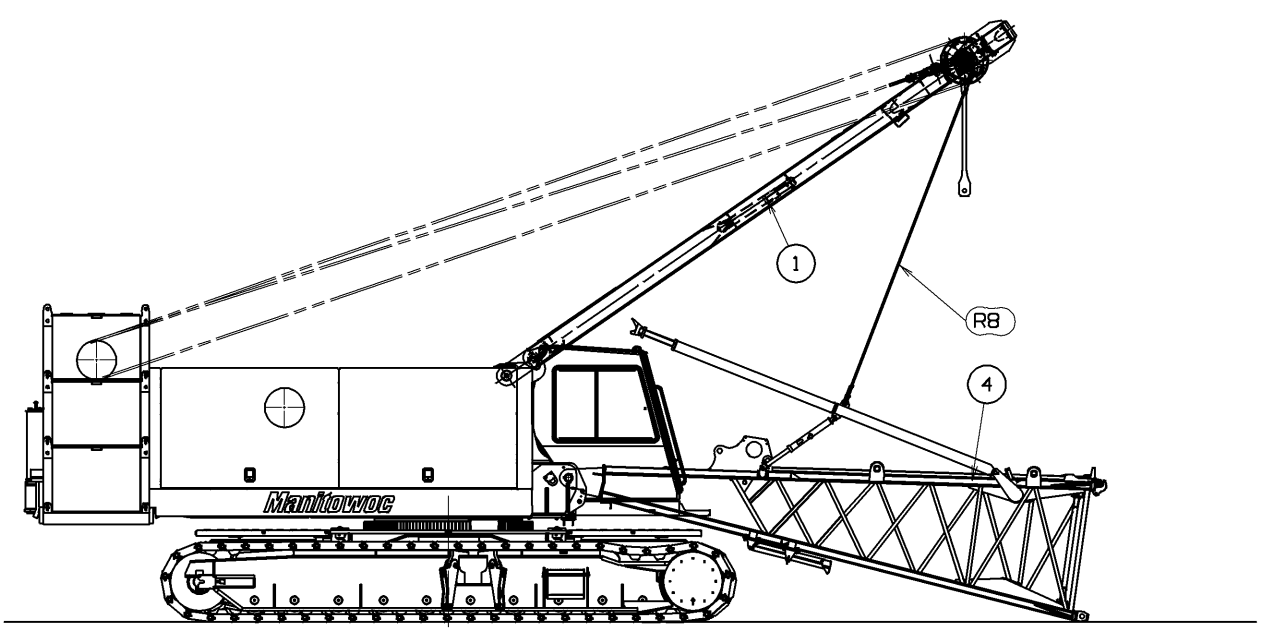
(MAST CAN BE USED TO ASSEMBLE ALL RIGGING COMPONENTS.)

1. ASSEMBLE BOOM COMPLETE. WITHOUT BUTT.
 2. ATTACH STRAPS, LINKS AND PINS AS REQ'D.
 3. RAISE WIRE ROPE GUIDE OF BOOM TOP.
 4. ATTACH BOOM HANDLING PENDANT TO MAST LUGS. SEE APPROPRIATE VIEWS AT LEFT.
 5. INSTALL BOOM BUTT USING THE OPTIONAL BUTT SUPPORT ASSEMBLY.
 6. ATTACH BOOM HANDLING PENDANTS AT LOWER END TO BOOM STOP RAISING LUGS. RAISE AND PIN BOOM STOPS IN WORKING POSITION.
 7. ATTACH BOOM HANDLING PENDANT LOWER END BACK TO BOOM BUTT.
 8. POSITION MACHINE TO ALIGN UPPER FACT CONNECTORS (HOOK) ON BOOM BUTT WITH UPPER FACT CONNECTORS OF FIRST BOOM INSERT AND INSERT LOCKING PINS (R4).
 9. SLOWLY BOOM UP TO ALIGN LOWER PIN CONNECTOR HOLES ON BOOM BUTT WITH LOWER PIN CONNECTOR HOLES OF FIRST BOOM INSERT AND INSERT PINS.
- WARNING:**
DO NOT BOOM UP PAST LOWER CONNECTOR HOLES. IF BOOMING UP CONTINUES AFTER CONNECTORS BOTTOM OUT OR AFTER PINS ARE INSERTED, DAMAGE TO BOOM HANDLING PENDANTS AND BOOM BUTT WILL OCCUR.
10. BOOM DOWN TO DISCONNECT BOOM HANDLING PENDANT FROM MAST AND STOW ON BUTT.
 11. ATTACH SPREADER LINKS TO STRAPS OF FIRST INSERT. (SEE VIEW "D" ON SHEET 3)
 12. ATTACH MAST LINK TO ADJUSTABLE LINK ON BOOM BUTT. USED APPROPRIATE HOLE ACCORDING TABLE 1 (A, B OR C).
 13. BOOM UP TO DESIRED BOOM ANGLE.

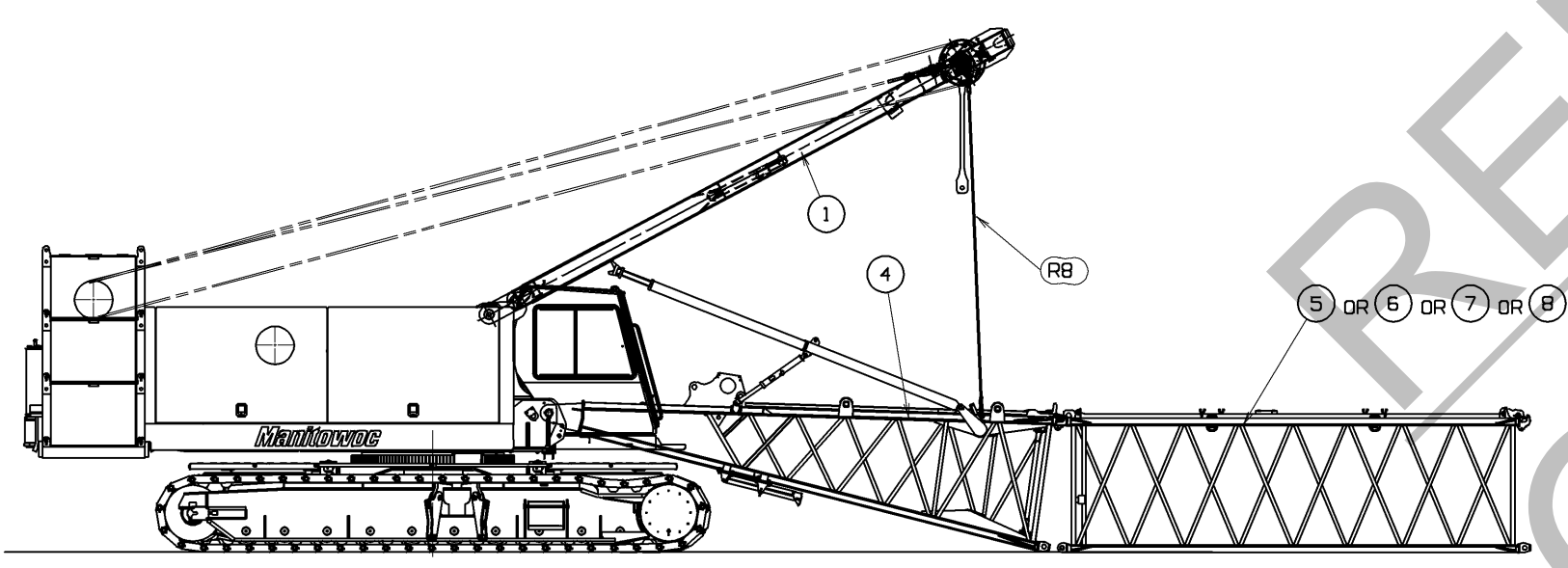
REVISIONS
06-12-10 JAS
A) UPDATED
BOOM SIGN



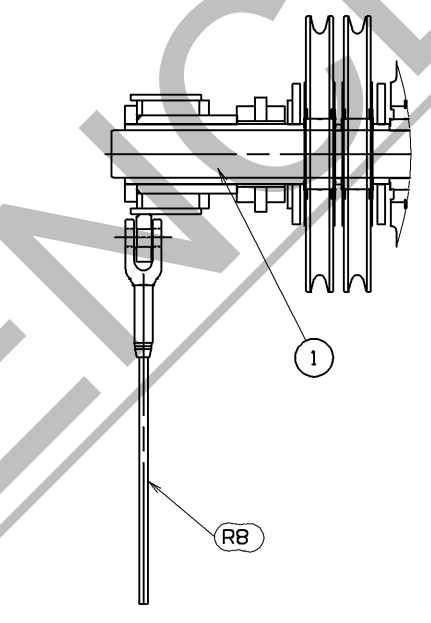
ATTACHING BOOM BUTT TO ROTATING BED USING OPTIONAL BUTT SUPPORT ASSEMBLY



USING MAST PENDANT TO POSITION BOOM STOP IN WORKING POSITION



BOOM ASSEMBLY WITH MAST



TO DISASSEMBLE BOOM

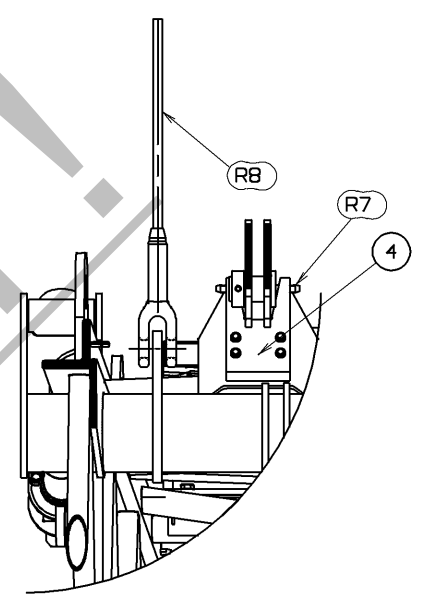
1. BOOM DOWN AND SUPPORT BOOM ON BLOCKING.
2. DISCONNECT SPREADER FROM INSERT STRAPS.
3. DISCONNECT MAST LINK FROM ADJUSTABLE LINKS.
4. CONNECT BOOM HANDLING PENDANTS TO MAST.
5. BOOM UP TO REMOVE SLACK FROM BOOM HANDLING STRAPS.

WARNING:
DO NOT BOOM UP TO PUT TENSION INTO BOOM HANDLING PENDANTS. (REMOVE SLACK ONLY) TENSION IN BOOM HANDLING PENDANT WILL DAMAGE PENDANT AND BOOM BUTT.

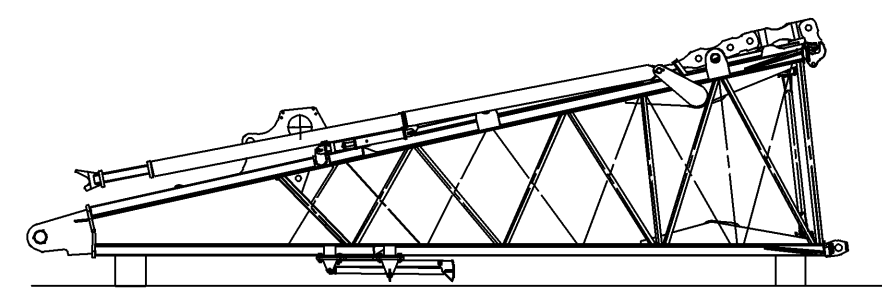
6. REMOVE BOOM BUTT TO INSERTS PINS AND BOOM DOWN TO DISENGAGE UPPER BOOM FACT CONNECTORS.

WARNING:
BOOM MUST BE PROPERLY BLOCKED TO PREVENT SHIFTING DURING PIN REMOVAL.

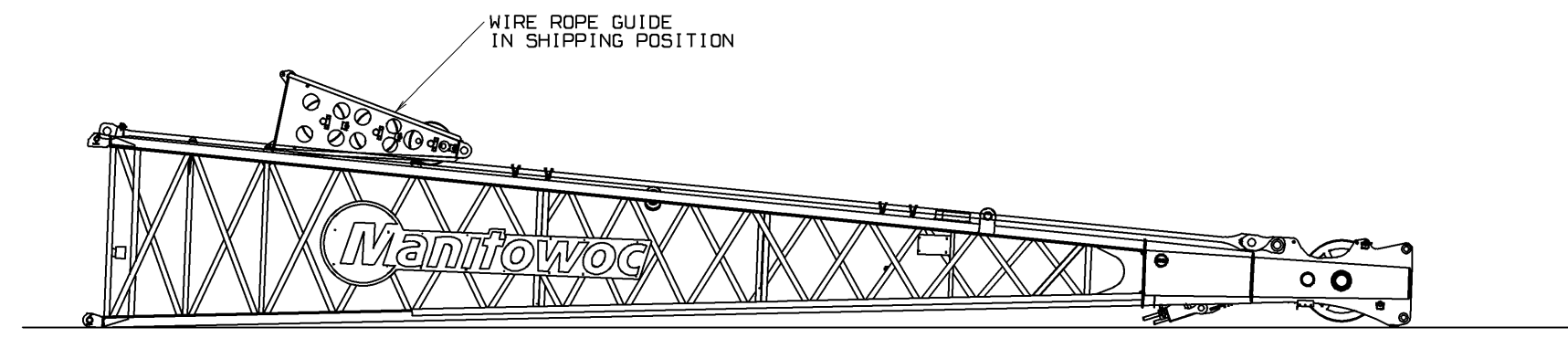
7. SLOWLY BACK AWAY FROM BOOM
8. LOWER BOOM STOPS TO SHIPPING POSITION.
9. REMOVE BOOM BUTT FROM ROTATING BED AND STOW BOOM HANDLING PENDANTS.
10. DISASSEMBLE BOOM WITH MAST



VIEW "C" - "C"
SCALE 1.50=1FT.



BOOM BUTT SHIPPING ARRANGEMENT

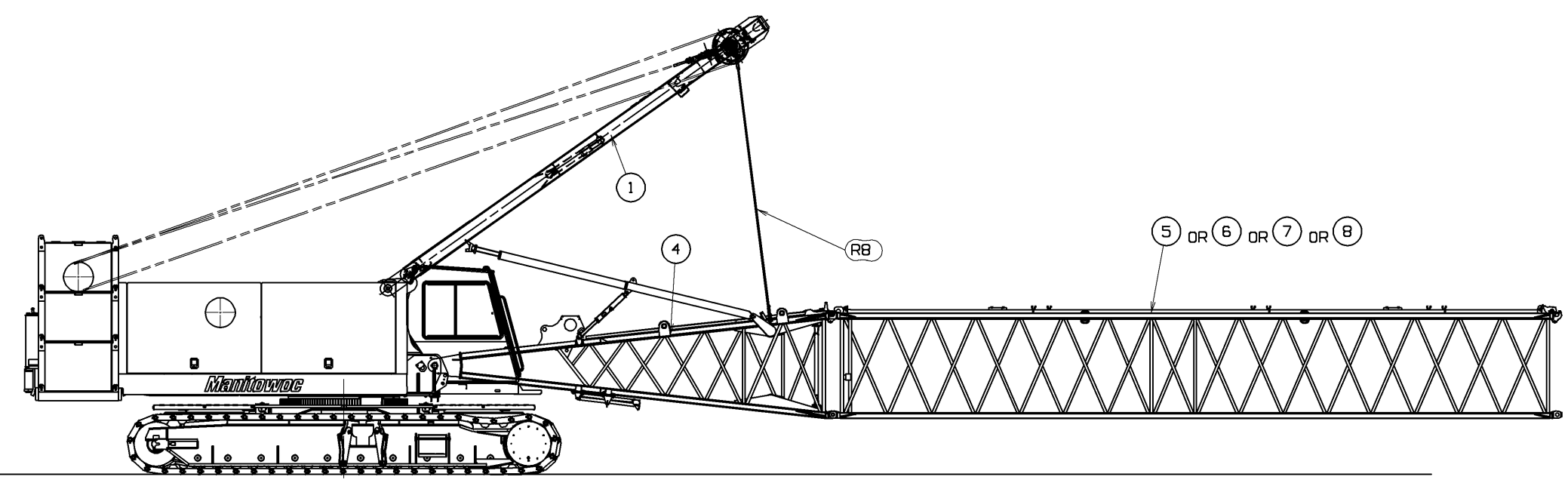


BOOM TOP SHIPPING ARRANGEMENT

REFERENCE ONLY!

REV. NO.
A03931
SHT 2 OF 3

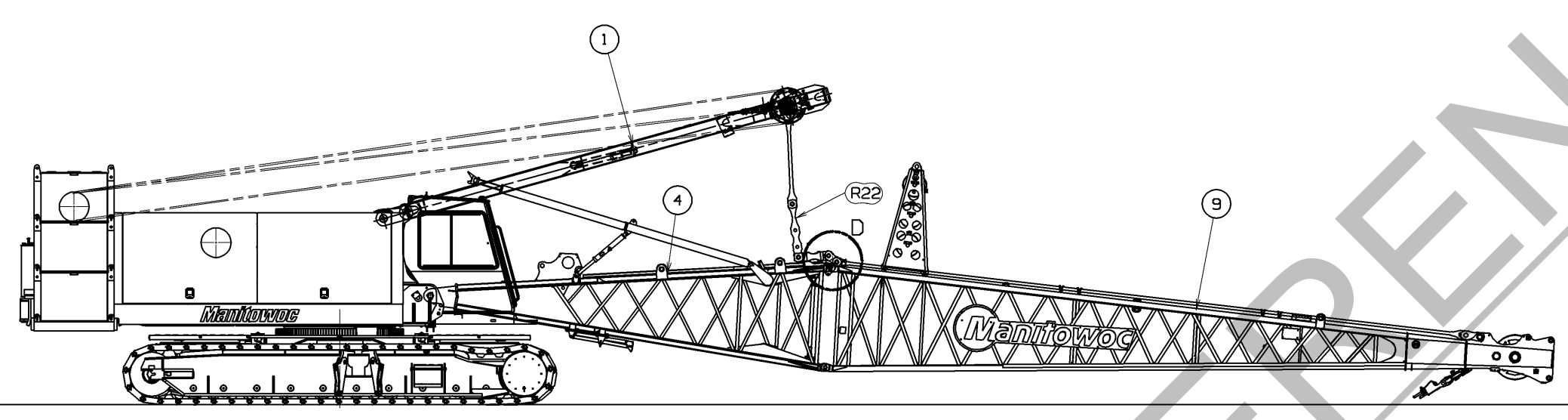
<p>THIS PRINT BEING THE PROPERTY OF MANITOWOC CRANES, INC. ALL INFORMATION CONTAINED THEREIN IS CONFIDENTIAL. IT IS LOANED, SUBJECT TO RETURN UPON DEMAND, AND ON EXPRESS CONDITION THAT IT IS NOT TO BE COPIED OR USED DIRECTLY OR INDIRECTLY IN ANY MANNER DETRIMENTAL TO OUR INTERESTS.</p>		<p>TOLERANCE UNLESS OTHERWISE SPECIFIED</p> <table border="1"> <tr> <th>DECIMAL PLACES</th> <th>FABRICATION</th> <th>MACHINING</th> </tr> <tr> <td>(1) PLACE 0.0</td> <td>±.12</td> <td>±.18</td> </tr> <tr> <td>(2) PLACE 0.00</td> <td>±.06</td> <td>±.12</td> </tr> <tr> <td>(3) PLACE 0.000</td> <td>±.005</td> <td>±.005</td> </tr> <tr> <td>ANGLES</td> <td>±1.30</td> <td>±0.30</td> </tr> </table>	DECIMAL PLACES	FABRICATION	MACHINING	(1) PLACE 0.0	±.12	±.18	(2) PLACE 0.00	±.06	±.12	(3) PLACE 0.000	±.005	±.005	ANGLES	±1.30	±0.30	<p>SCALE 1.50=1FT</p> <p>DR. ER CHK. TSC APP. TSC</p>	<p>Manitowoc Cranes, Inc. Manitowoc, Wisconsin</p> <p>MODEL 555</p>	<p>BOOM ASSEMBLY #84 BOOM WITH OPEN THROAT TOP</p>	<p>DATE 09-12-02 PATTERN NO. A03931</p>
DECIMAL PLACES	FABRICATION	MACHINING																			
(1) PLACE 0.0	±.12	±.18																			
(2) PLACE 0.00	±.06	±.12																			
(3) PLACE 0.000	±.005	±.005																			
ANGLES	±1.30	±0.30																			



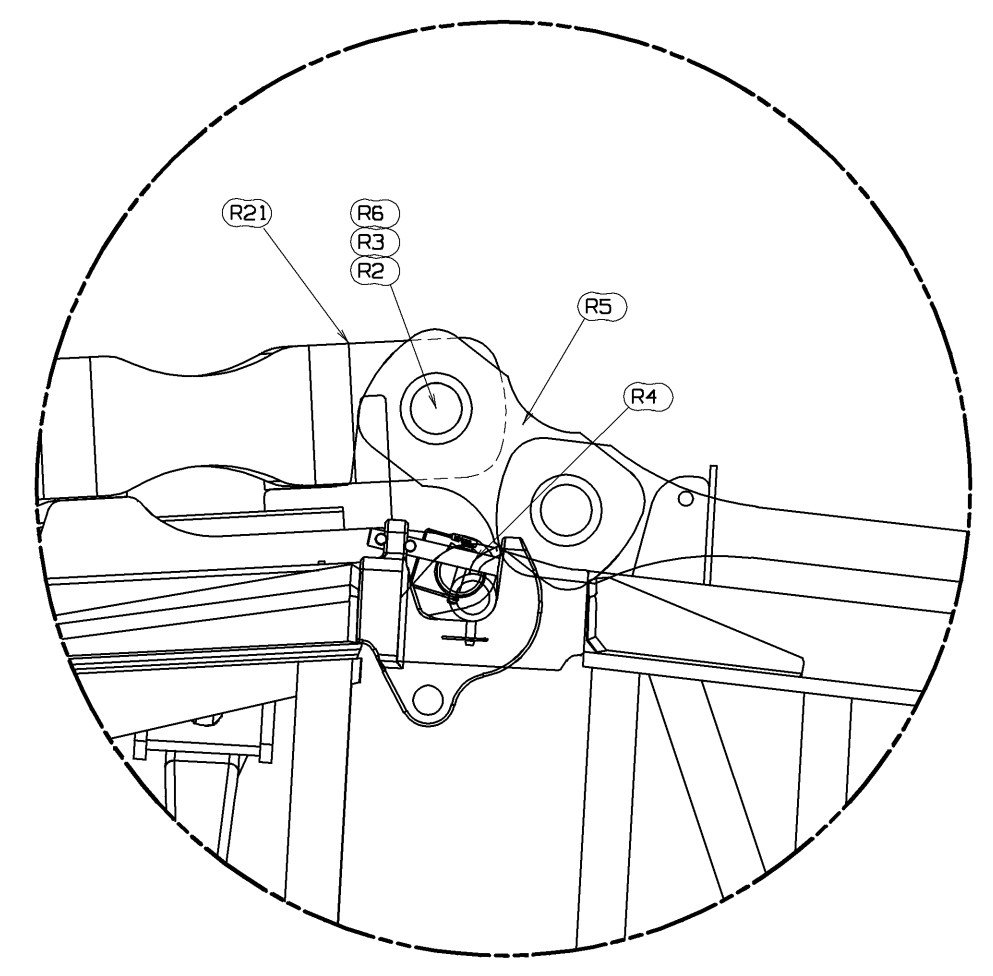
BOOM HANDLING WITH MAST

BOOM HANDLING WITH MAST
WITH MAST PENDANT ATTACHED TO BOOM
MAXIMUM BOOM THAT CAN BE
CANTILEVERED IS AS FOLLOWS:

LENGTH	10 FT. (3.05 M) INSERT	20 FT. (6.10 M) INSERT	40 FT. (12.2 M) INSERT
40 FT. (12.2 M)	2	1	0
40 FT. (12.2 M)	0	0	1
50 FT. (15.2 M)	1	0	1
60 FT. (18.3 M)	0	1	1
60 FT. (18.3 M)	2	0	1
70 FT. (21.3 M)	1	1	1
80 FT. (24.4 M)	0	0	2



CONNECTING OR DISCONNECTING
MAST/SPREADER/INSERT STRAPS



VIEW "D"
SCALE 3.00=1FT

REFERENCE ONLY!

REVISIONS
06-12-10 JAS
A) UPDATED
BOOM SIGN

SHG. NO.
A03931
SHT 3 OF 3

PRIVATE LABELING
REQUIREMENT TO
CONFORM TO
ENGINEERING
SPECIFICATION
6629103794 FOR
COMPONENTS LISTED
IN 60500-09-026
DATE
09-12-02
PATTERN NO.

THIS PRINT BEING THE PROPERTY OF MANTOWOC CRANES, INC. IT IS LOANED, SUBJECT TO RETURN UPON DEMAND, AND ON EXPRESS CONDITION THAT IT IS NOT TO BE COPIED OR USED DIRECTLY OR INDIRECTLY IN ANY MANNER DETRIMENTAL TO OUR INTERESTS.		TOLERANCE UNLESS OTHERWISE SPECIFIED		SCALE 25:1		Mantowoc Cranes, Inc. Mantowoc, Wisconsin		BOOM ASSEMBLY #84 BOOM WITH OPEN THROAT TOP	
DECIMAL PLACES	FABRICATION	MACHINING	DR. ER	CK. TSC	MODEL 555	APP TSC			
(1) PLACE 0.5	± 0.12	± 0.18							
(2) PLACE 0.00	± 0.08	± 0.12							
(3) PLACE 0.000	± 0.005	± 0.005							
ANGLES	± 1.0'	± 0.5'							