

STEP 2
 MAIN STRUT RAISING

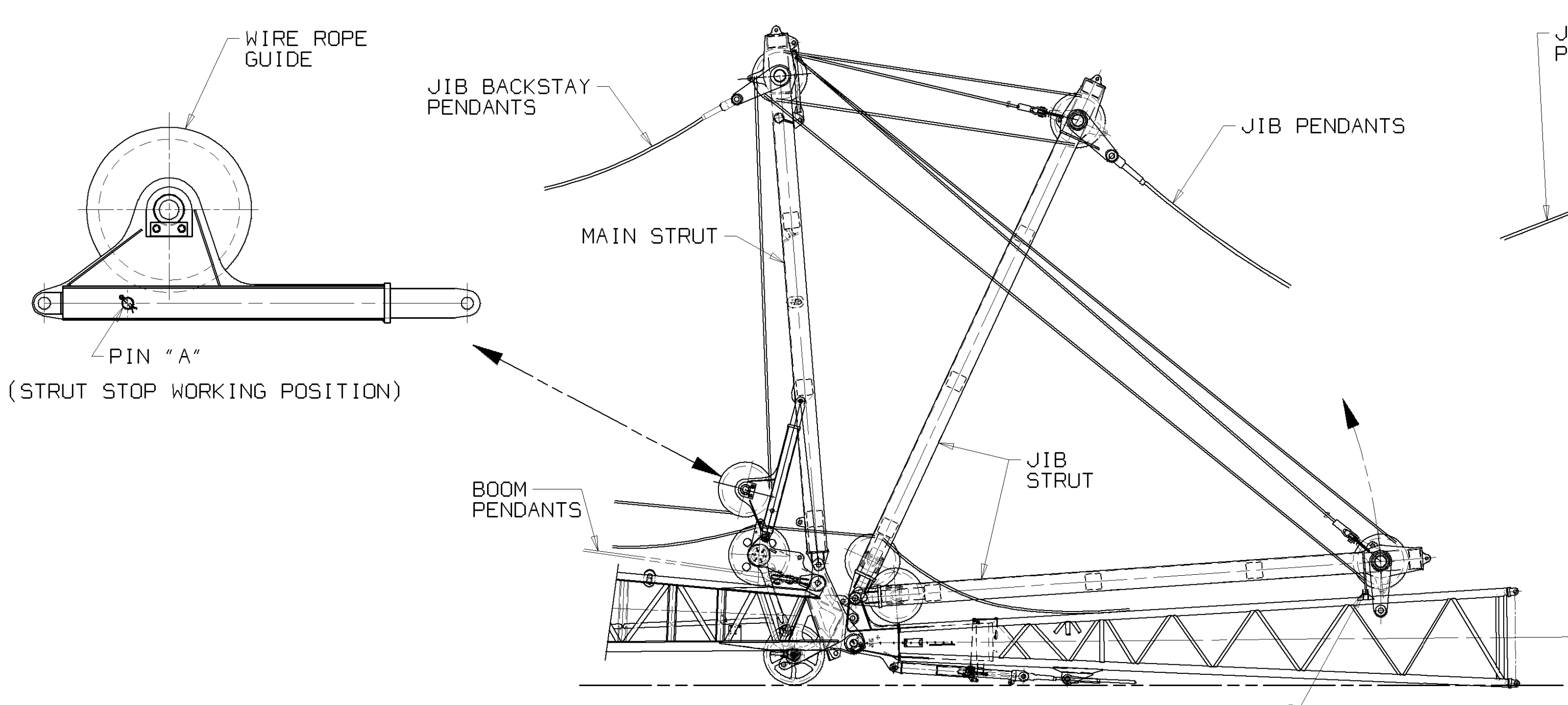
REEVING PROCEDURE (SEE STEP 1)

1. MOUNT AND PIN JIB STRUT ASSEMBLY ITEM 17 TO JIB BUTT ITEM 14. PIN JIB STRUT TO JIB BUTT WITH PIN ITEM 30.
2. MOUNT AND PIN MAIN STRUT ITEM 16 TO BOOM TOP WITH PIN ITEM 8. PIN LINK "B" FROM MAIN STRUT TO JIB STRUT.
3. REMOVE PIN "A" AND ATTACH WIRE ROPE GUIDE TO BOOM TOP WITH ITEMS 3, 20, 31 AND 32.
4. REMOVE ROPE GUARD IN BOOM POINT ASSEMBLY.
5. REEVE RIGGING AS SHOWN IN REEVING DIAGRAM.

MAIN STRUT ERECTION PROCEDURE (SEE STEP 2)

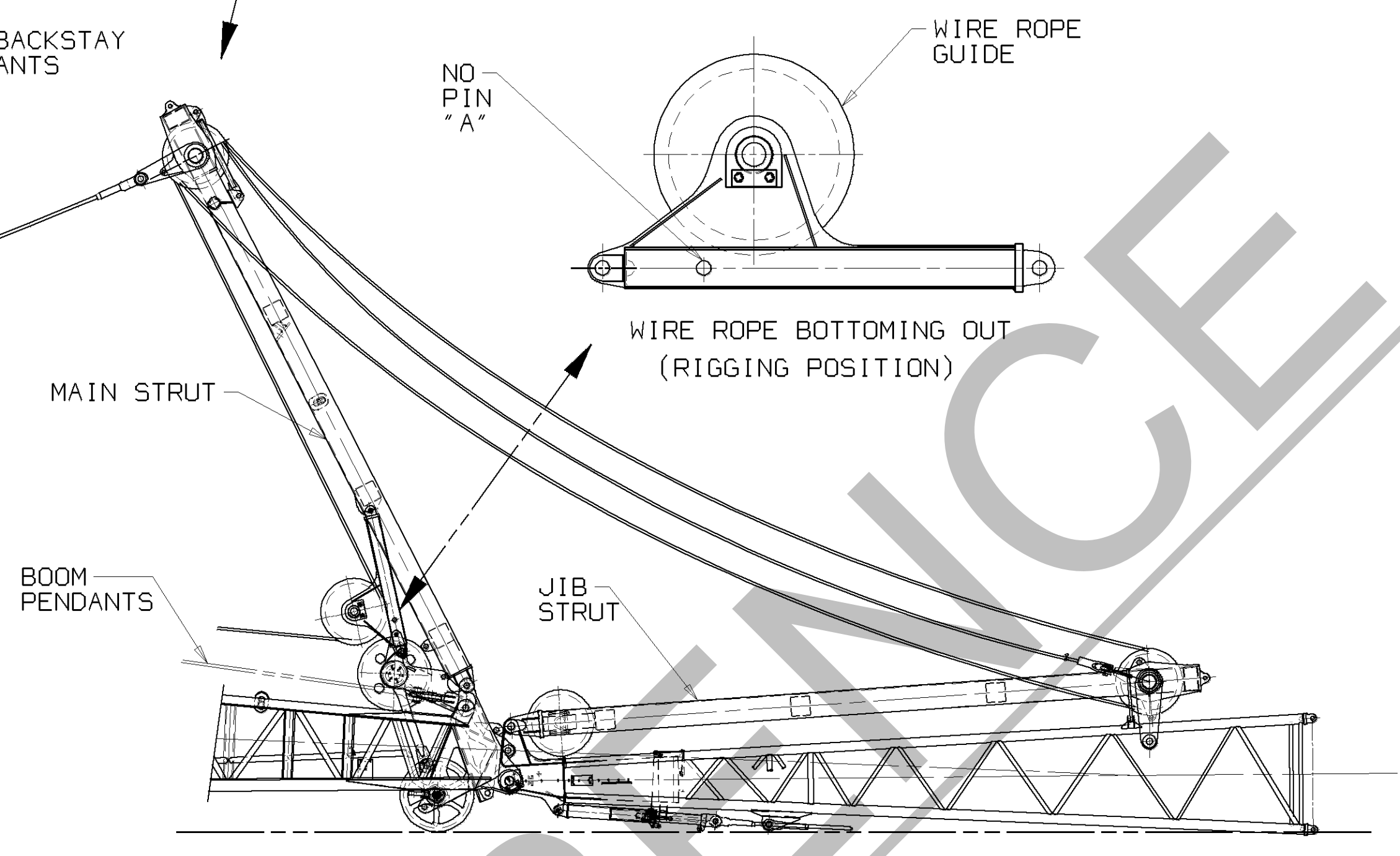
DANGER: DO NOT STAND UNDER MAIN STRUT DURING ERECTION.

1. PIN ITEM 30 AND LINK "B" MUST BE IN PLACE.
2. ATTACH JIB BACKSTAY PENDANTS AS REQUIRED PER BOOM LENGTH. (SEE TABLE) ADD 20 FT. OF BOOM PENDANTS. LOWER MAST AND PIN.
3. RAISE MAST TO SUPPORT MAIN STRUT THEN UNPIN AND STOW LINK "B".
4. PIN "A" MUST BE IN STOWED POSITION IN MAIN STRUT.
5. RAISE MAST AND AT SAME TIME PAY OUT LUFFING HOIST RIGGING LINE. JIB HOIST RIGGING MUST HOLD BACK MAIN STRUT FROM FALLING FORWARD AFTER MAIN STRUT REACHES VERTICAL.
6. REPLACE ROPE GUARD IN BOOM POINT ASSEMBLY BEFORE STRUT STOP REACHES VERTICAL. SEE POSITION "E".
7. WHEN MAIN STRUT GOES OVER CENTER, STOP RAISING MAST AND USE LUFFING HOIST RIGGING TO LOWER UNTILL TELESCOPING WIRE ROPE GUIDE BOTTOMS OUT AS SHOWN IN POSITION "C".
8. INSTALL JIB BACKSTAY AND BOOM PENDANTS. (SEE TABLES)
9. RAISE MAST TO CLEAR LUFFING JIB HOIST LINE.
10. USING LUFFING HOIST RIGGING MOVE MAIN STRUT FORWARD TO A POINT WHEN PIN "A" CAN BE INSERTED INTO WIRE ROPE GUIDE FOR STRUT STOP WORKING POSITION.
11. SUPPORT MAIN STRUT WITH PIN "A" AND REMOVE PIN ITEM 30. (SEE POSITION "D")
 INSTALL JIB PENDANTS (SEE TABLE)



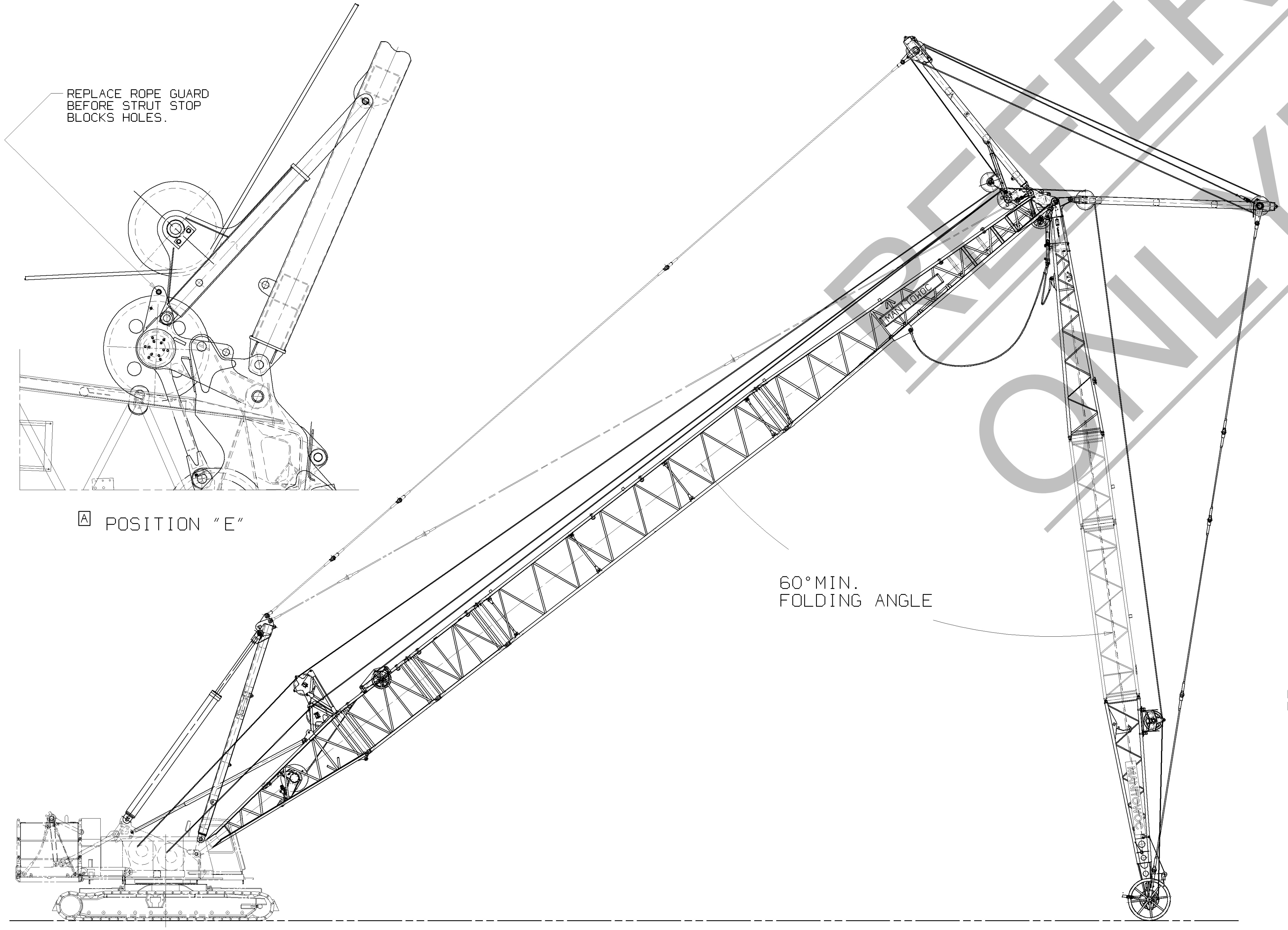
POSITION "D"

MAIN STRUT SUPPORTED BY PIN "A" IN WIRE ROPE GUIDE

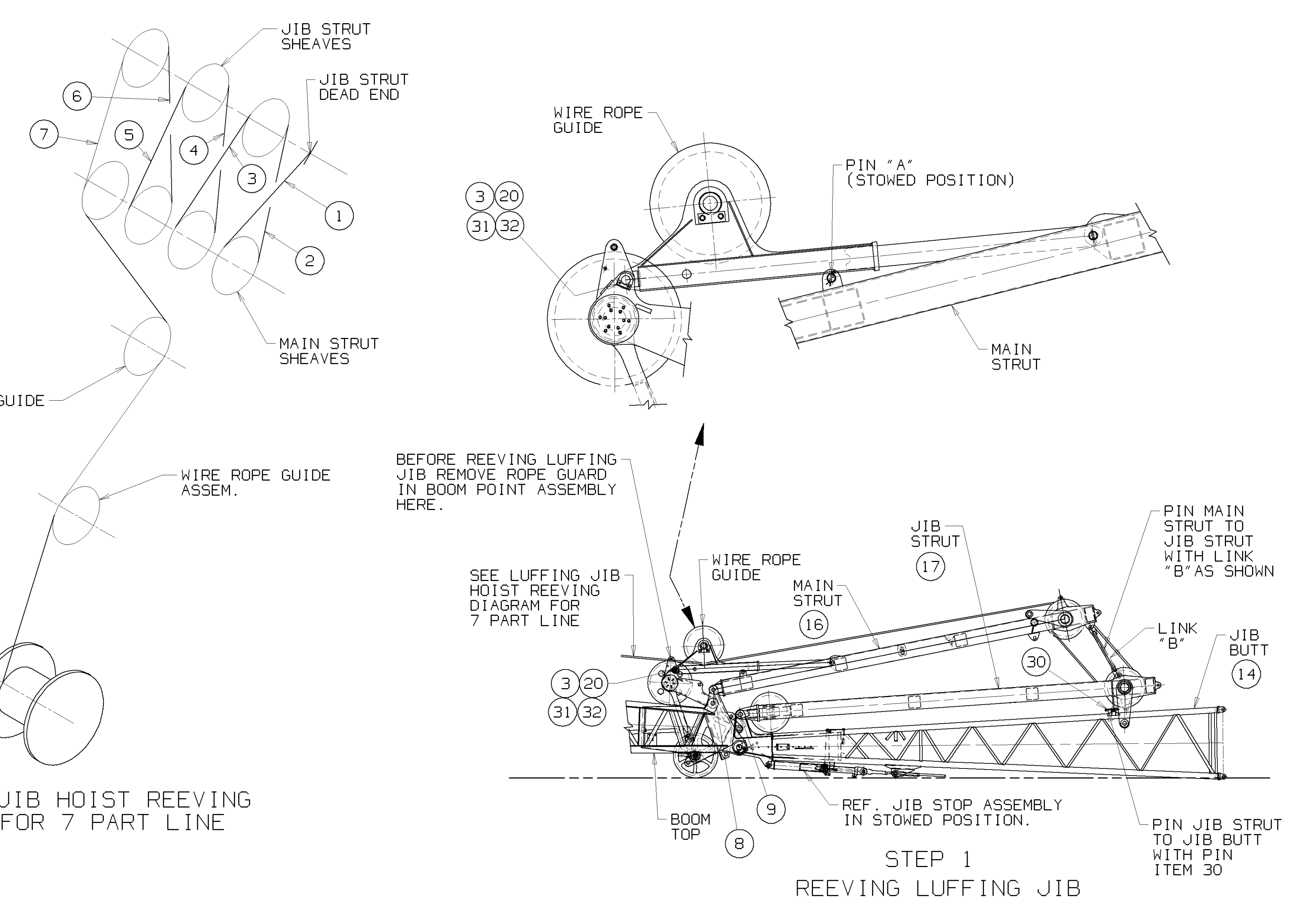


POSITION "C"

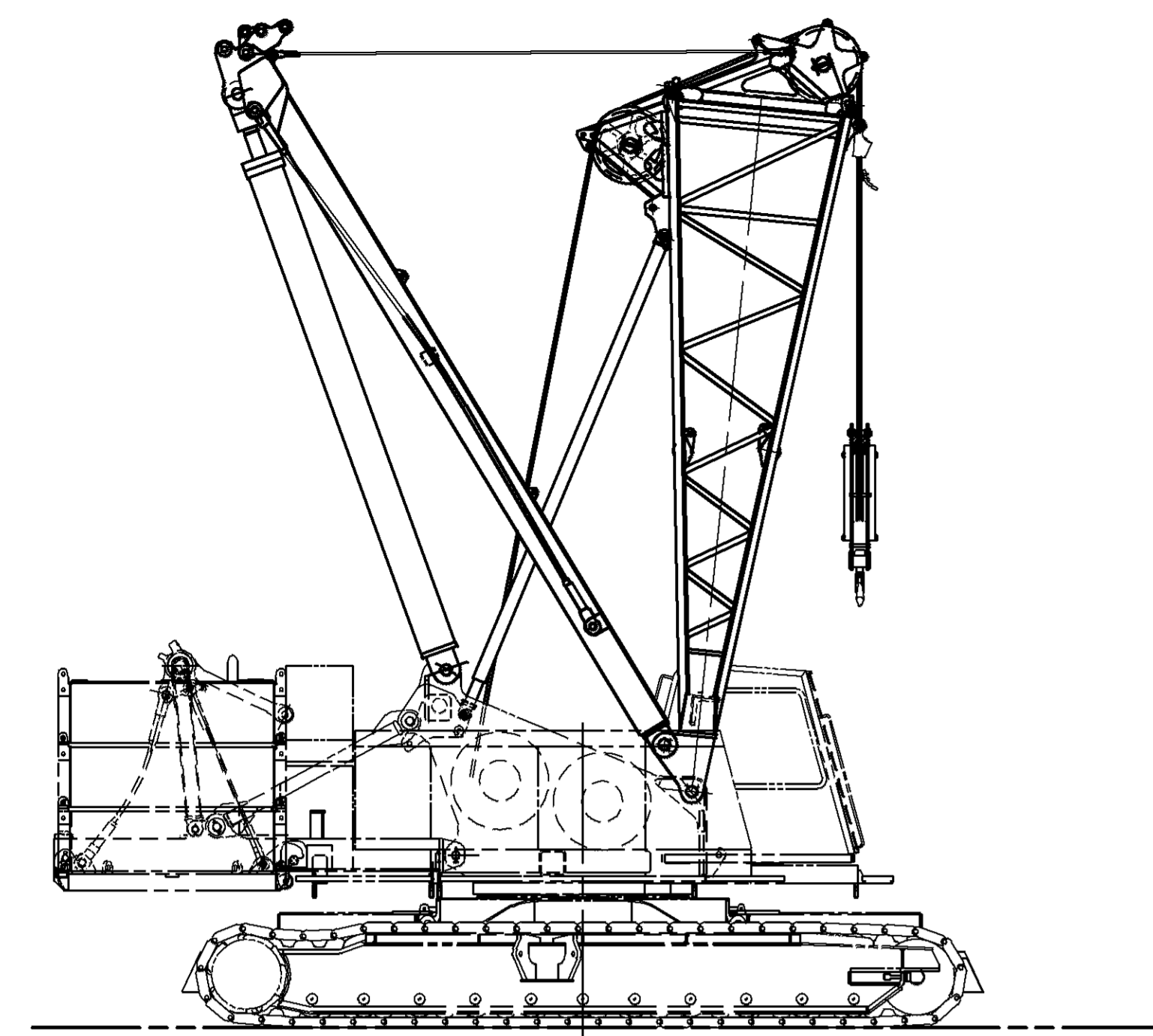
MAIN STRUT SUPPORTED BY WIRE ROPE GUIDE



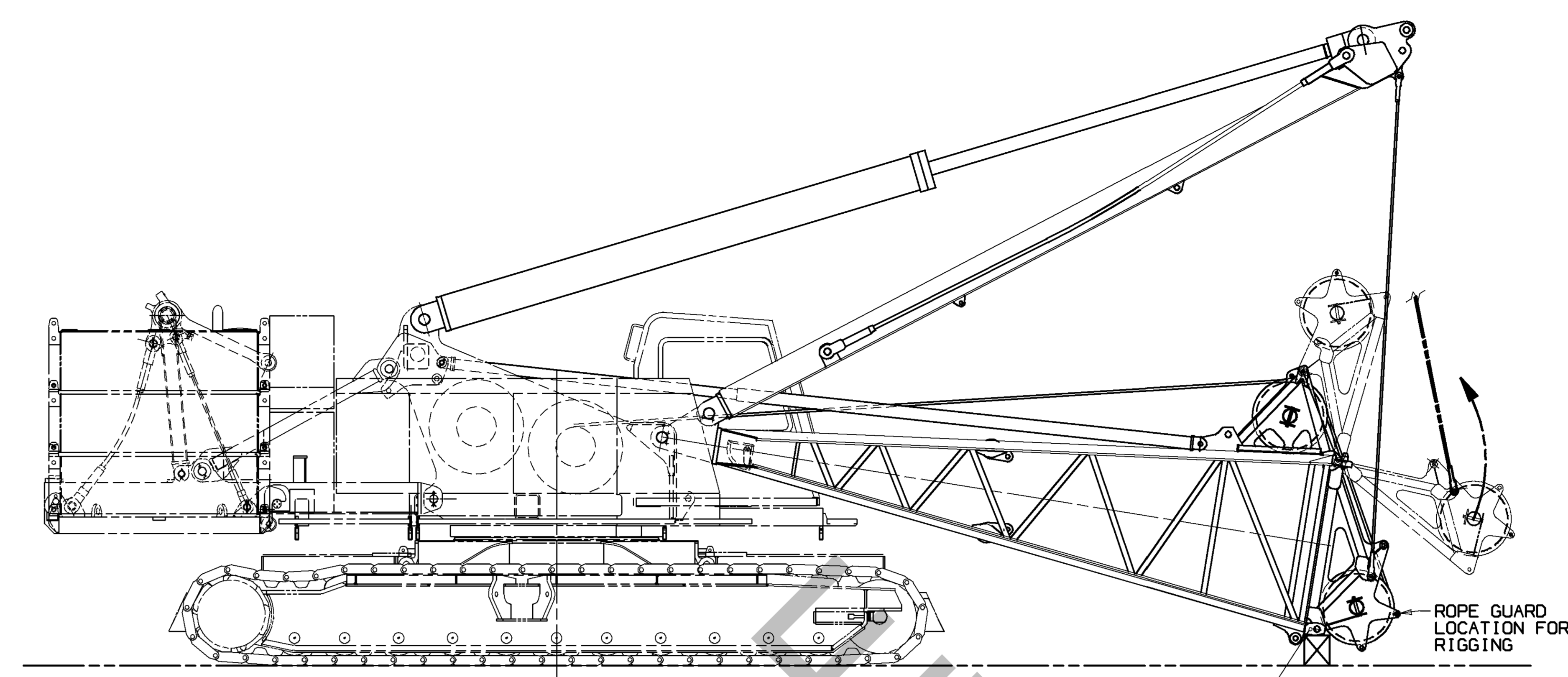
LUFFING JIB RAISING



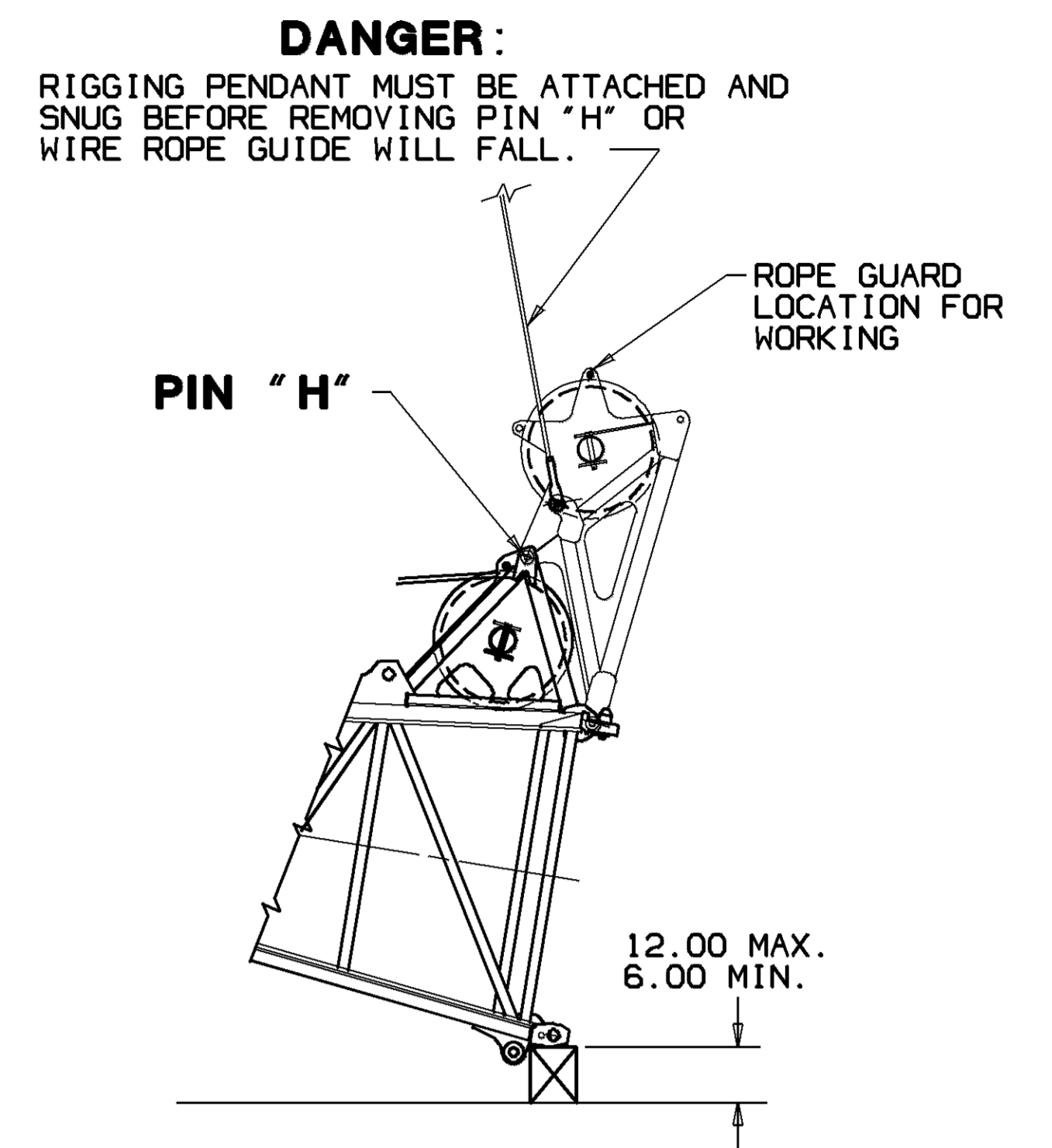
STEP 1
 REEVING LUFFING JIB



MAST ASSEMBLY RIGGED FOR HANDLING BOOM PARTS



HANDLING WIRE ROPE GUIDE

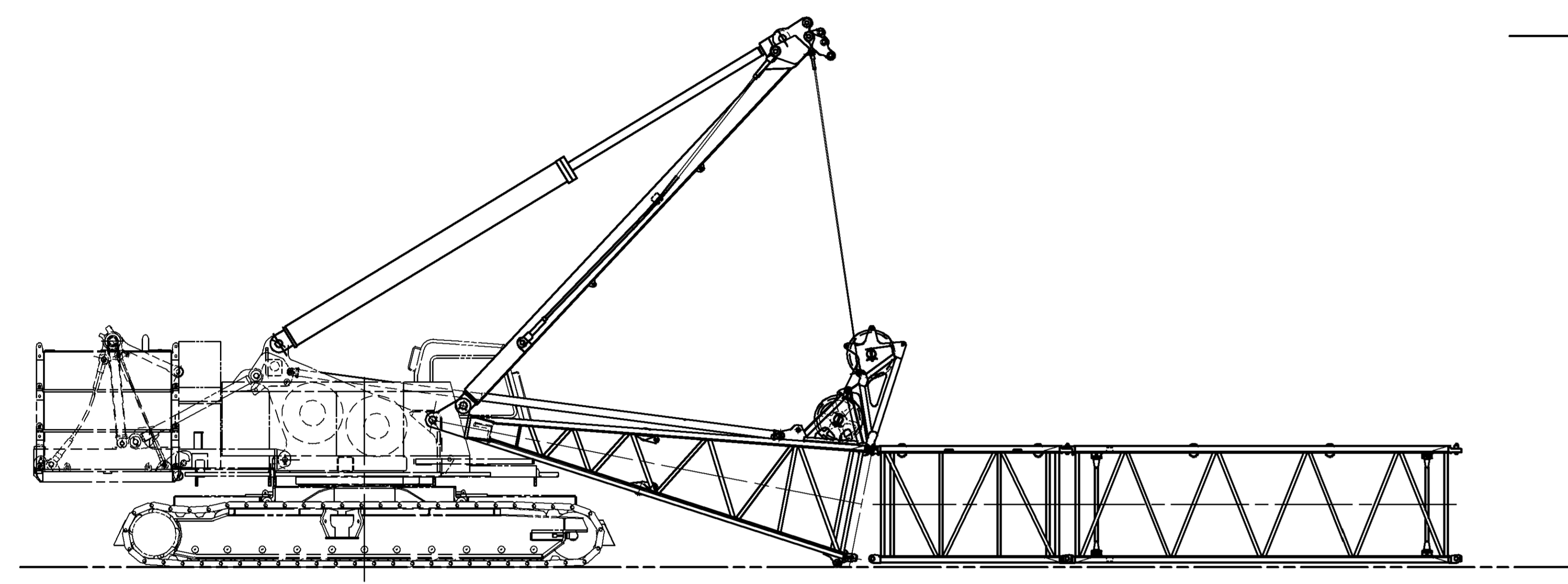


DANGER:
RIGGING PENDANT MUST BE ATTACHED AND SNUG BEFORE REMOVING PIN "H" OR WIRE ROPE GUIDE WILL FALL.

PIN "H"

12.00 MAX.
6.00 MIN.

PIN "H"
REMOVE PIN "H" AND BOOM UP TO RAISE WIRE ROPE GUIDE TO WORKING POSITION.



BOOM ASSEMBLY WITH MAST

MAST PINNED TO BOOM BUTT FOR LOW CLEARANCE TRAVEL
MAXIMUM BOOM THAT CAN BE CANTILEVERED IS AS FOLLOWS:

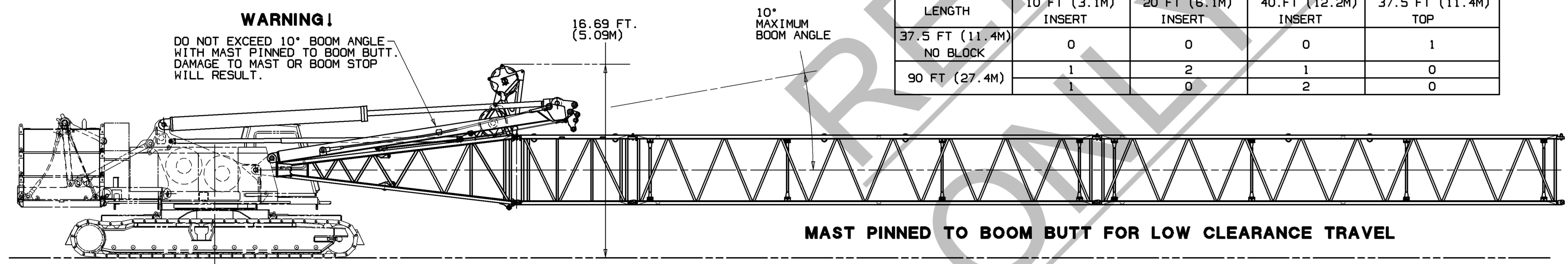
LENGTH	10 FT (3.1M) INSERT	20 FT (6.1M) INSERT	40 FT (12.2M) INSERT	37.5 FT (11.4M) TOP
37.5 FT (11.4M) NO BLOCK	0	0	0	1
90 FT (27.4M)	1	2	1	0
	1	0	2	0

BOOM ASSEMBLY PROCEDURE

(MAST ASSEMBLY CAN BE USED TO ASSEMBLE ALL RIGGING COMPONENTS.)

1. ASSEMBLE TOP AND INSERTS. (SEE TABLE SHEET 1)
 2. ATTACH ROPE GUIDES, PENDANTS, LINKS AND PINS AS REQ'D.
 3. POSITION MACHINE TO ALIGN UPPER FACT PIN CONNECTOR HOLES ON BOOM BUTT WITH UPPER PIN CONNECTOR HOLES ON TOP OR FIRST BOOM INSERT.
 4. ENGAGE UPPER FACT PINS. CONTINUE BOOMING UP SLOWLY TO ALIGN LOWER PIN CONNECTOR HOLES ON BOOM BUTT WITH LOWER PIN CONNECTOR HOLES IN TOP OR FIRST BOOM INSERT AND INSTALL PINS.
- WARNING:** DO NOT BOOM UP AFTER LOWER FACT CONNECTORS MAKE CONTACT. IF BOOMING UP CONTINUES AFTER CONNECTORS BOTTOM OUT OR AFTER PINS ARE INSERTED, DAMAGE TO ROPE GUIDE AND BOOM BUTT WILL OCCUR.
5. BOOM DOWN TO DISCONNECT RIGGING PENDANT FROM ROPE GUIDE AND STOW.
 6. ATTACH BOOM PENDANTS TO MAST LINK. (SEE VIEW "D" ON SHEET 1)
 7. BOOM UP TO DESIRED BOOM ANGLE.

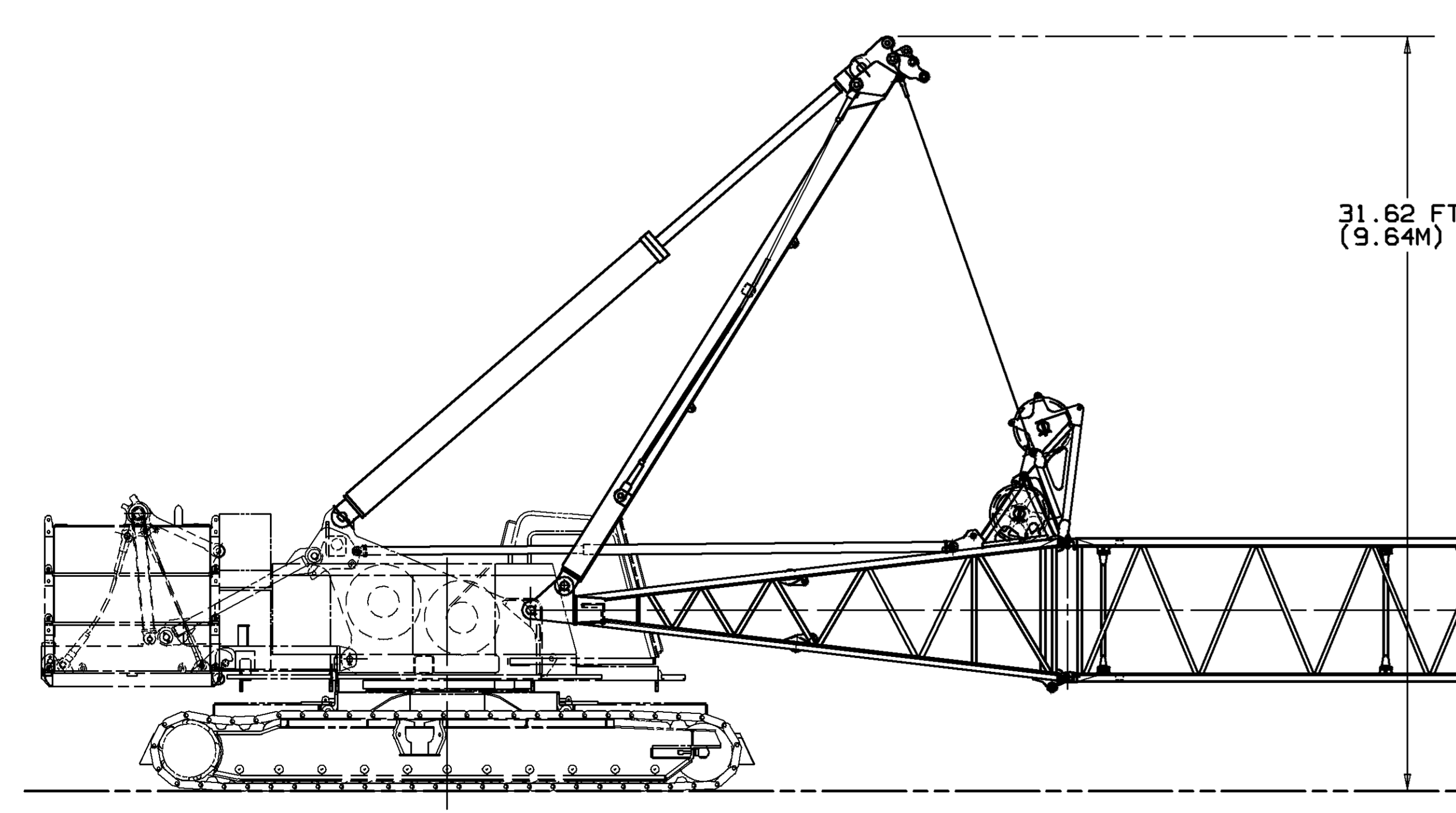
WARNING!
DO NOT EXCEED 10° BOOM ANGLE WITH MAST PINNED TO BOOM BUTT. DAMAGE TO MAST OR BOOM STOP WILL RESULT.



MAST PINNED TO BOOM BUTT FOR LOW CLEARANCE TRAVEL

TO DISASSEMBLE BOOM

1. BOOM DOWN AND SUPPORT BOOM ON BLOCKING.
 2. DISCONNECT BOOM PENDANTS FROM MAST LINKS.
 3. CONNECT RIGGING PENDANTS TO ROPE GUIDE. SEE (HANDLING WIRE ROPE GUIDE)
 4. BOOM UP SLOWLY TO SUPPORT WEIGHT OF BOOM BUTT WITH RIGGING PENDANTS.
- WARNING:** BOOMING UP TO SUPPORT FULL WEIGHT OF BOOM WILL DAMAGE ROPE GUIDE AND BOOM BUTT.
5. REMOVE LOWER PIN CONNECTING BUTT TO TOP OR FIRST INSERT.
- WARNING:** BOOM MUST BE PROPERLY BLOCKED TO PREVENT SHIFTING DURING PIN REMOVAL.
6. SLOWLY BOOM DOWN TO DISENGAGE UPPER FACT CONNECTOR PINS AND BACK AWAY.
 7. SEE (HANDLING WIRE ROPE GUIDE)



BOOM HANDLING WITH MAST
WITH MAST PENDANTS PINNED TO ROPE GUIDE LINKS; MAXIMUM BOOM THAT CAN BE CANTILEVERED IS AS FOLLOWS:

LENGTH	10 FT. (3.05 M) INSERT	20 FT. (6.10 M) INSERT	40 FT. (12.2 M) INSERT
40 FT (12.2M)	2	1	0
50 FT (15.2M)	1	2	0
60 FT (18.3M)	2	0	1
60 FT (18.3M)	0	1	1
80 FT (24.4M)	0	2	1
80 FT (24.4M)	0	0	2

BOOM HANDLING WITH MAST