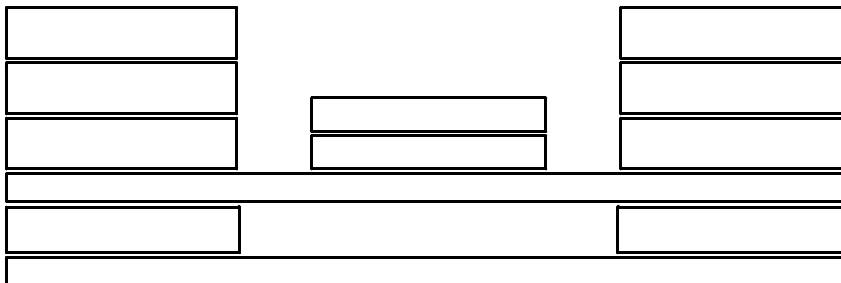


# Counterweight Arrangements

## Crane Counterweight

**M-250**



### **M-250**

167,000 Lb. (75 750 kg) Crane Counterweight

or

### **M-250 WITH MAX-ER 225**

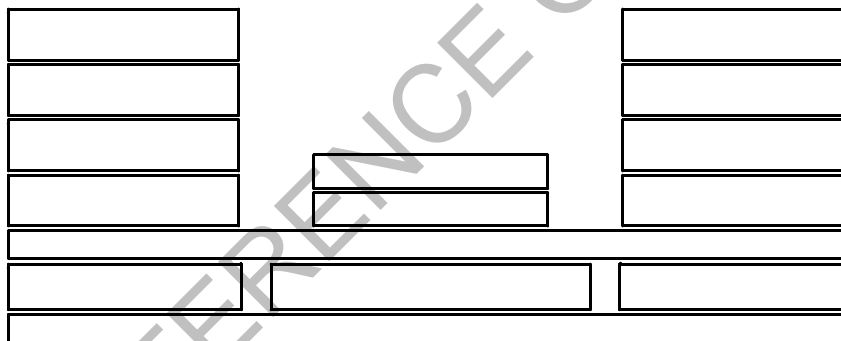
or

### **M-250 WITH MAST - 130 Ft. (39.6m)**

With MAX-ER, 225 Wheeled Or Hanging  
Counterweight Hardware Attached

167,000 Lb. (75 750 kg) Crane Counterweight

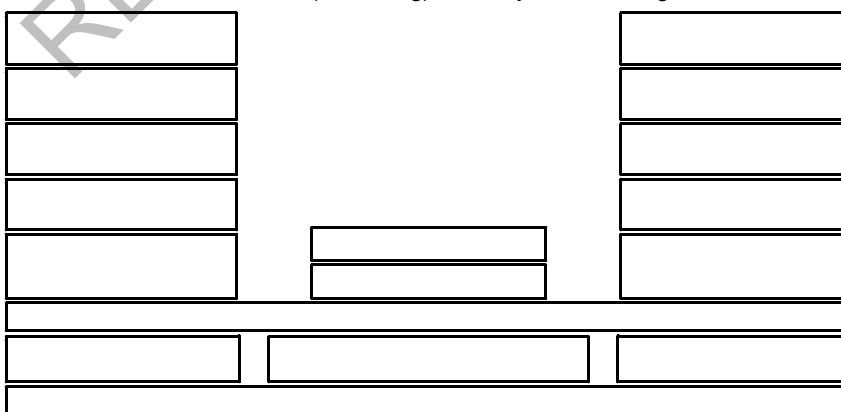
60,000 Lb. (27 220 kg) Carbody Counterweight



### **M-250 SERIES 2**

207,000 Lb. (93 890 kg) Crane Counterweight

60,000 Lb. (27 220 kg) Carbody Counterweight



### **M-250 SERIES 3**

248,700 Lb. (112 810 kg) Crane Counterweight

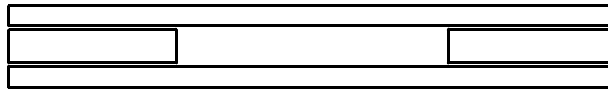
120,000 Lb. (54 430 kg) Carbody Counterweight

See page 3 for Carbody Counterweight Arrangements.  
Refer to Counterweight Assembly for specific weights.

# Counterweight Arrangements

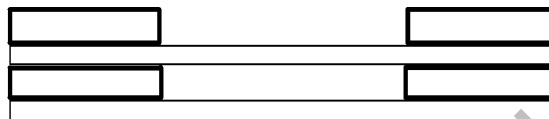
**M-250**

## Crane Counterweight



**M-250**

82,400 Lb. (37 380 kg) Crane Counterweight



**M-250**

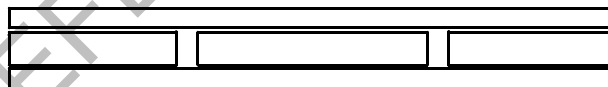
104,000 lb (34 360 kg) Crane Counterweight



**M-250 WITH X-SPANDER**

95,500 Lb. (43 320 kg) Crane Counterweight

60,000 Lb. (27 220 kg) Carbody Counterweight



**M-250 SPECIAL**

100,800 Lb. (45 720 kg) Crane Counterweight

or

**M-250 SERIES 2**

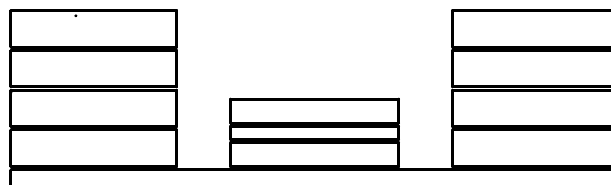
100,800 Lb. (45 720 kg) Crane Counterweight

60,000 Lb. (27 220 kg) Carbody Counterweight

# Counterweight Arrangements

## Carbody Counterweight

**M-250**



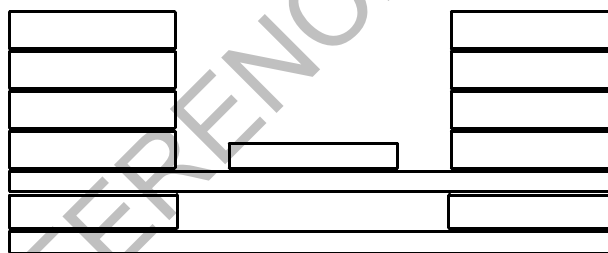
**M-250 WITH MAX-SPANDER**

or

**M-250 WITH MAST - 130 Ft. (39.6m)**

143,200 Lb. (64 950 kg) Crane Counterweight

150,000 Lb. (68 040 kg) Carbody Counterweight



**M-250 WITH MAX-ER 175**

or

**M-250 WITH MAST - 130 Ft. (39.6m)**

with MAX-ER 175 Hanging Counterweight Hardware Attached

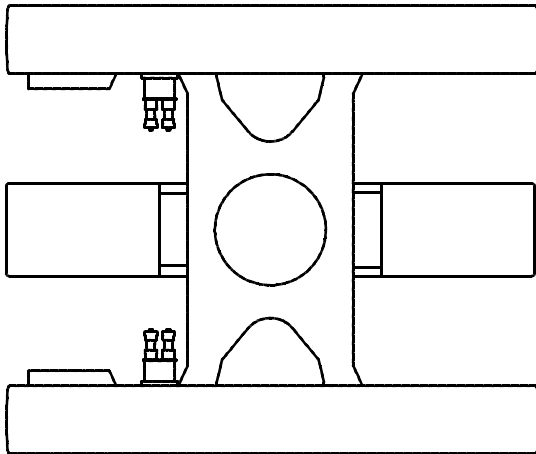
178,600 Lb. (81 010 kg) Crane Counterweight

60,000 Lb. (27 220 kg) Carbody Counterweight

# Counterweight Arrangements

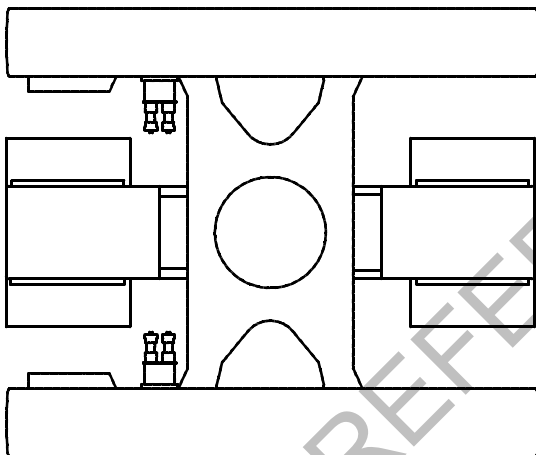
## M-250

### Hanging Counterweight

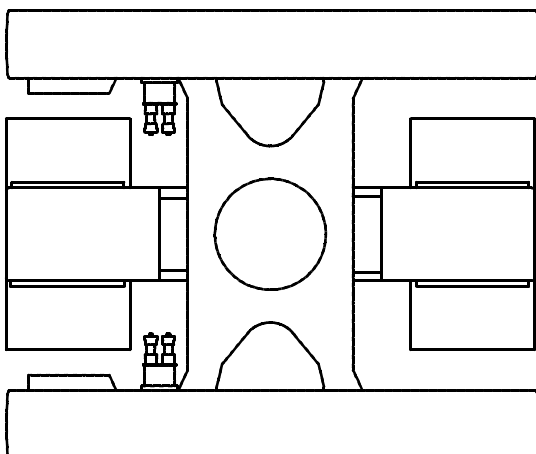


**M-250 SERIES 2**  
or  
**M-250 WITH X-SPANDER**  
or  
**M-250 WITH MAX-ER 175**  
or  
**M-250 WITH MAX-ER 225**

**M-250 WITH MAST - 130 Ft. (39.6m)**  
with Wheeled or Hanging Counterweight Hardware Attached  
60,000 lb (27 220 kg) Carbody Counterweight



**M-250 SERIES 3**  
120,000 Lb. (54 430 kg) Carbody Counterweight

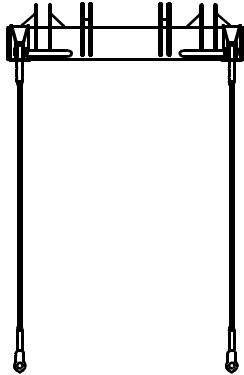


**M-250 WITH MAX-SPANDER**  
or  
**M-250 WITH MAST - 130 Ft. (39.6m)**  
or  
**M-250 SERIES 2 SPECIAL**  
150,000 Lb. (68 040 kg) Carbody Counterweight

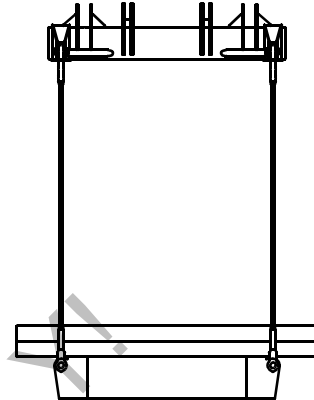
# Counterweight Arrangements

## Carbody Counterweight

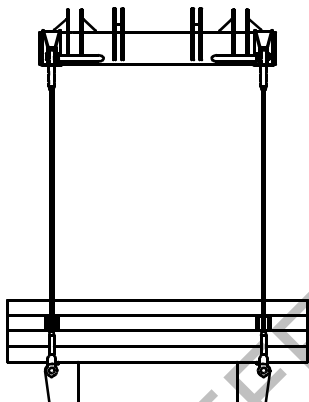
**M-250**



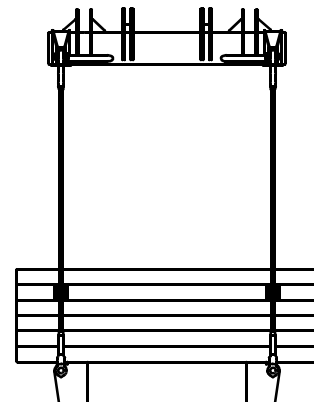
**M-250 WITH MAX-ER 175**  
0 Lb. (0 kg) Hanging Counterweight  
With Hanging Counterweight Hardware Attached



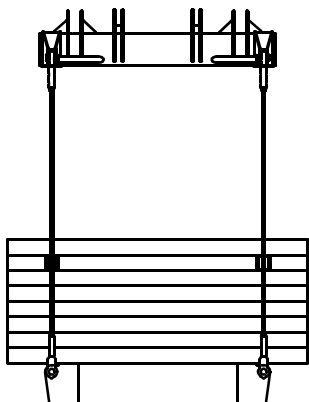
**M-250 WITH MAX-ER 175**  
55,000 Lb. (24 950 kg) Hanging Counterweight



**M-250 WITH MAX-ER 175**  
95,000 Lb. (43 090 kg) Hanging Counterweight



**M-250 WITH MAX-ER 175**  
135,000 Lb. (61 230 kg) Hanging Counterweight

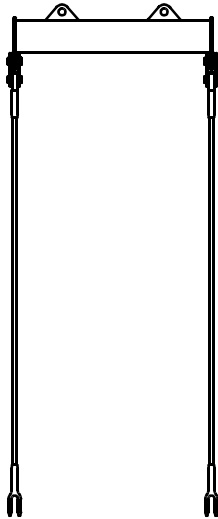


**M-250 WITH MAX-ER 175**  
175,000 Lb. (79 380 kg) Hanging Counterweight

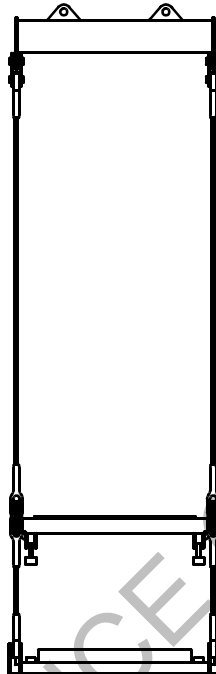
# Counterweight Arrangements

**M-250**

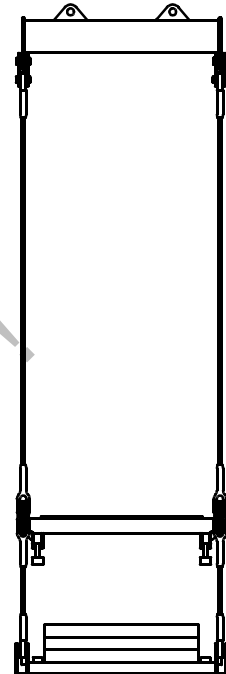
## Hanging Counterweight



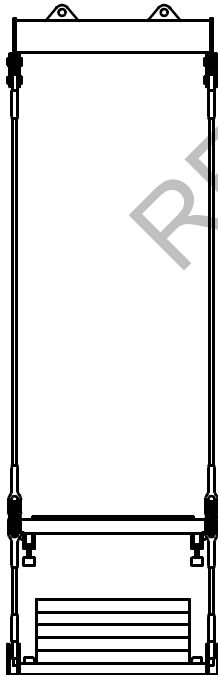
**M-250 WITH MAX-ER 225**  
0 Lb. (0 kg) Hanging Counterweight  
With Hanging Counterweight  
Hardware Attached



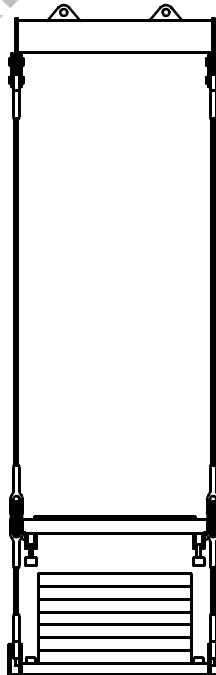
**M-250 WITH MAX-ER 225**  
55,000 Lb. (24 950 kg)  
Hanging Counterweight



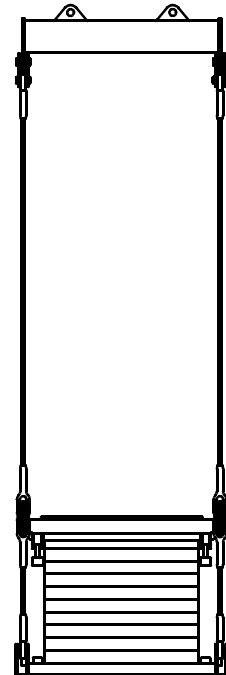
**M-250 WITH MAX-ER 225**  
95,000 Lb. (43 090 kg)  
Hanging Counterweight



**M-250 WITH MAX-ER 225**  
135,000 Lb. (61 230 kg)  
Hanging Counterweight



**M-250 WITH MAX-ER 225**  
175,000 Lb. (79 380 kg)  
Hanging Counterweight

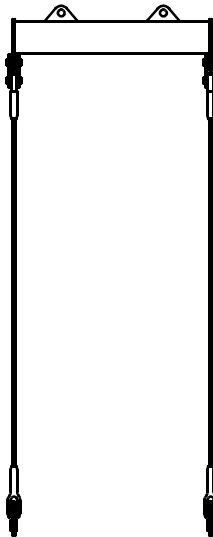


**M-250 WITH MAX-ER 225**  
225,000 Lb. (102 060 kg)  
Hanging Counterweight

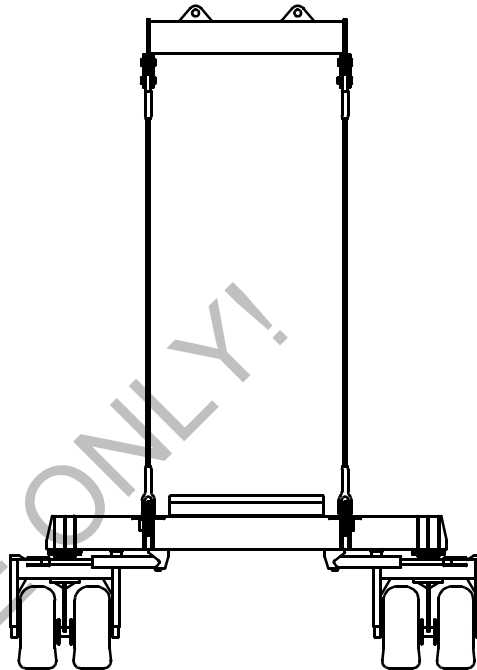
# Counterweight Arrangements

## Carbody Counterweight

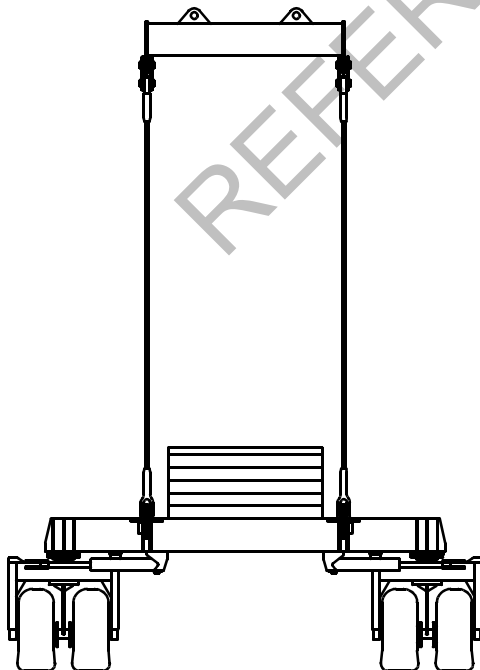
**M-250**



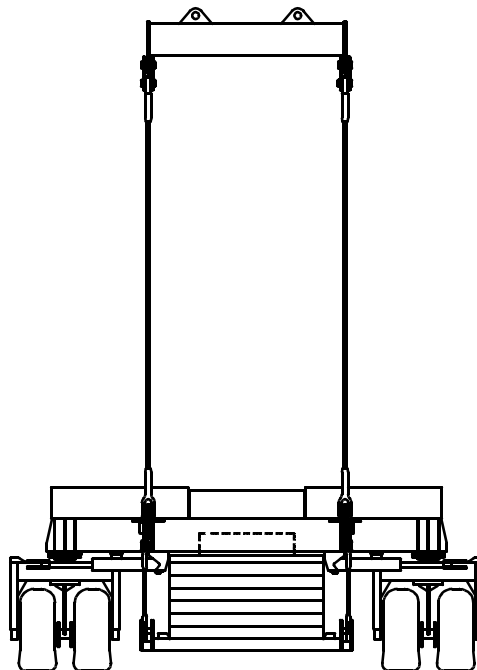
**M-250 WITH MAX-ER 225**  
0 Lb. (0 kg) Wheeled Counterweight  
With Wheeled Counterweight  
Hardware Attached



**M-250 WITH MAX-ER 225**  
55,000 Lb. (24 950 kg) Wheeled Counterweight



**M-250 WITH MAX-ER 225**  
135,000 Lb. (61 230 kg) Wheeled Counterweight

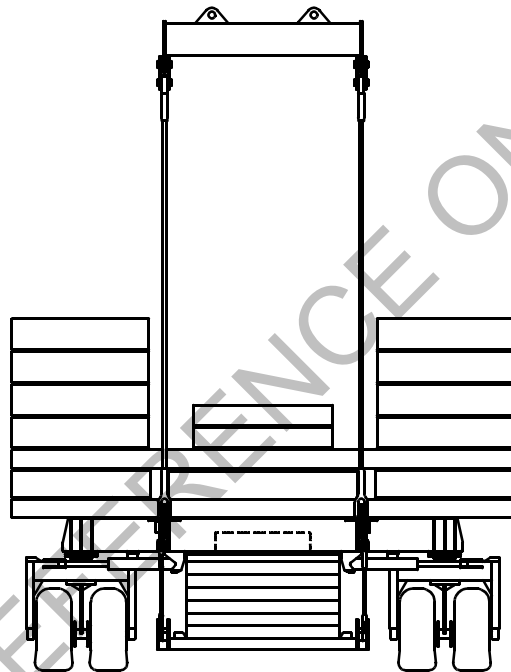


**M-250 WITH MAX-ER 225**  
225,000 Lb. (102 060 kg) Wheeled Counterweight

# Counterweight Arrangements

**M-250**

## Hanging Counterweight



**M-250 WITH MAX-ER 400**

400,000 Lb. (181 440 kg) Wheeled Counterweight