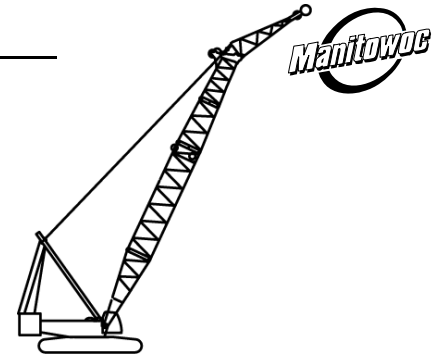


Liftcrane Boom Extended Upper Point Capacities

**Boom No. 58 HL with 23.0 ft Extended
Upper Boom Point
296,000 lb Crane Counterweight
60,000 lb Carbody Counterweight
Crawler Machine on a Barge
0 Degree thru 3 Degree Static Machine List
No Travel - 360 Degree Rating - Two Swing Drives**



16000 SERIES 2

LIFTING CAPACITIES: Lifting capacities are for a crawler machine when operating on a barge. Machine shall be positively secured to prevent shifting. Lifting capacities for various boom lengths and operating radii are for freely suspended loads and do not exceed 75% of a static tipping load. Capacities based on structural competence are denoted by an asterisk (*).

Upper boom point (upper sheave) capacity for liftcrane service with single part whip line is 30,000 lb. In all cases, upper boom point capacities cannot exceed those listed for extended upper boom point (lower sheave) capacity.

Weight of all load blocks, hooks, weight ball, slings, hoist lines, etc., beneath upper boom point sheaves, is considered part of extended upper boom point load. Boom is not to be lowered beyond radii where combined weights are greater than rated capacity. Where no capacity is shown, operation is not intended or approved.

OPERATING CONDITIONS: Machine to operate on a firm uniformly supporting surface with machine list not to exceed degrees noted. Refer to boom rigging **No. A10415**, Wire Rope Specification chart **No. 8674-B**, Counterweight Arrangement chart **No. 8682-A** and Wind Conditions chart **No. 8688-A**. Crane operator judgment must be used to allow for dynamic load effects of swinging, hoisting or lowering, wind conditions, as well as adverse operating conditions and physical machine depreciation. Refer to Operator's Manual for operating guidelines.

OPERATING RADIUS: Operating radius is horizontal distance from axis of rotation at barge deck to center of vertical hoist line or load block.

BOOM ANGLE: Boom angle in degrees (°) is angle between horizontal and centerline of boom butt and inserts, and is an indication of operating radius. In all cases, operating radius shall govern capacity.

EXTENDED UPPER BOOM POINT ELEVATION: Extended upper boom point elevation is vertical distance from barge deck to centerline of extended upper boom point (lower sheave) shaft.

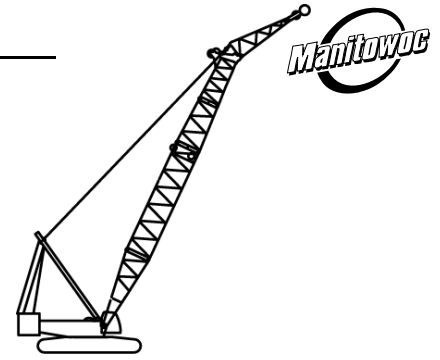
MACHINE EQUIPMENT: Machine equipped with two swing drives, 34 ft crawlers, 60 in. treads, 32 ft live mast, 26 part boom hoist reeving, boom support straps, 296,000 lb crane counterweight, and two 30,000 lb carbody counterweights.

Maximum Boom Lengths Lifted Unassisted		
List	Over End of Blocked Crawlers	Over Side of Crawlers
	Boom Length	Boom Length
0 Degree	275.6 ft	255.9 ft
1 Degree	275.6 ft	255.9 ft
2 Degree	275.6 ft	255.9 ft
3 Degree	275.6 ft	255.9 ft
Load block, hook and weight ball on barge deck at start.		

Lower boom point must be removed when extended upper boom point is attached.

Liftcrane Boom Extended Upper Point Capacities

Boom No. 58 HL with 23.0 ft Extended
 Upper Boom Point
 296,000 lb Crane Counterweight
 60,000 lb Carbody Counterweight
 Crawler Machine on a Barge
 0 Degree thru 3 Degree Static Machine List
 No Travel - 360 Degree Rating - Two Swing Drives



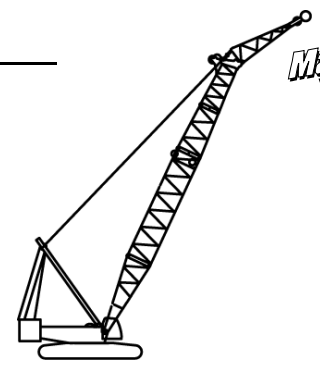
16000 SERIES 2

Oper. Radius Feet	Boom Angle Deg.	Boom Point Elev. Feet	0 Degree List Boom Capacity Pounds	1 Degree List Boom Capacity Pounds	2 Degree List Boom Capacity Pounds	3 Degree List Boom Capacity Pounds	Oper. Radius Feet
137.8 ft							
45	80.5	164.0	215,200 *	191,600 *	182,400 *		45
50	78.7	162.6	215,200 *	191,600 *	182,400 *	156,000 *	50
55	76.8	161.1	215,200 *	191,600 *	182,400 *	156,000 *	55
60	74.9	159.4	211,100	190,000 *	182,400 *	156,000 *	60
65	73.0	157.4	188,100	176,300	165,500	155,600	65
70	71.0	155.3	169,100	159,200	150,100	141,700	70
75	69.1	153.0	153,100	144,800	137,000	129,800	75
80	67.1	150.5	139,500	132,400	125,700	119,400	80
85	65.0	147.7	127,700	121,600	115,700	110,300	85
90	62.9	144.7	117,500	112,100	107,000	102,200	90
95	60.8	141.4	108,400	103,700	99,200	95,000	95
100	58.6	137.9	100,400	96,300	92,300	88,500	100
105	56.4	134.1	93,200	89,600	86,100	82,700	105
110	54.0	129.9	86,800	83,600	80,400	77,400	110
115	51.6	125.4	81,000	78,100	75,300	72,500	115
120	49.1	120.5	75,600	73,100	70,600	68,100	120
125	46.5	115.1	70,800	68,500	66,200	64,000	125
130	43.7	109.2	66,300	64,300	62,300	60,300	130
135	40.8	102.6	62,200	60,400	58,600	56,800	135
140	37.6	95.2	58,400	56,800	55,200	53,600	140



Liftcrane Boom Extended Upper Point Capacities

Boom No. 58 HL with 23.0 ft Extended
 Upper Boom Point
 296,000 lb Crane Counterweight
 60,000 lb Carbody Counterweight
 Crawler Machine on a Barge
 0 Degree thru 3 Degree Static Machine List
 No Travel - 360 Degree Rating - Two Swing Drives

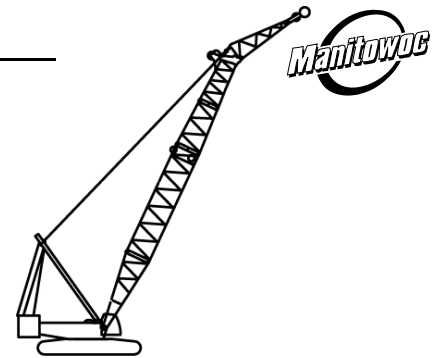


16000 SERIES 2

Oper. Radius Feet	Boom Angle Deg.	Boom Point Elev. Feet	0 Degree List Boom Capacity Pounds	1 Degree List Boom Capacity Pounds	2 Degree List Boom Capacity Pounds	3 Degree List Boom Capacity Pounds	Oper. Radius Feet
157.5 ft							
45	81.6	184.2	215,200 *	198,100 *			45
50	79.9	183.0	215,200 *	198,100 *	179,700 *	149,900 *	50
55	78.3	181.6	215,200 *	198,100 *	179,700 *	149,900 *	55
60	76.6	180.1	210,500	194,500	179,700 *	149,900 *	60
65	74.9	178.4	187,500	174,300	162,300	149,900 *	65
70	73.2	176.6	168,400	157,300	147,200	138,000	70
75	71.5	174.5	152,400	143,000	134,300	126,400	75
80	69.8	172.3	138,700	130,600	123,200	116,200	80
85	68.0	169.9	126,900	119,900	113,400	107,300	85
90	66.2	167.4	116,600	110,500	104,800	99,400	90
95	64.4	164.6	107,500	102,200	97,100	92,300	95
100	62.6	161.6	99,500	94,800	90,300	86,000	100
105	60.7	158.4	92,300	88,100	84,100	80,300	105
110	58.7	154.9	85,900	82,100	78,500	75,100	110
115	56.7	151.2	80,000	76,700	73,400	70,300	115
120	54.7	147.2	74,700	71,700	68,800	66,000	120
125	52.6	142.9	69,900	67,200	64,500	61,900	125
130	50.4	138.2	65,400	63,000	60,600	58,300	130
135	48.2	133.2	61,300	59,100	56,900	54,800	135
140	45.8	127.7	57,600	55,600	53,600	51,700	140
145	43.3	121.8	54,000	52,200	50,400	48,700	145
150	40.7	115.3	50,800	49,100	47,500	45,900	150
155	37.9	108.2	47,700	46,200	44,800	43,300	155

Liftcrane Boom Extended Upper Point Capacities

Boom No. 58 HL with 23.0 ft Extended
 Upper Boom Point
 296,000 lb Crane Counterweight
 60,000 lb Carbody Counterweight
 Crawler Machine on a Barge
 0 Degree thru 3 Degree Static Machine List
 No Travel - 360 Degree Rating - Two Swing Drives



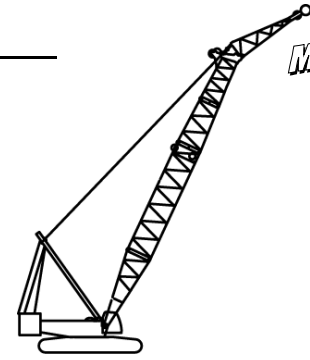
16000 SERIES 2

Oper. Radius Feet	Boom Angle Deg.	Boom Point Elev. Feet	0 Degree List Boom Capacity Pounds	1 Degree List Boom Capacity Pounds	2 Degree List Boom Capacity Pounds	3 Degree List Boom Capacity Pounds	Oper. Radius Feet
177.2 ft							
45	82.4	204.3	215,200 *				45
50	81.0	203.2	215,200 *	208,900 *	170,800 *		50
55	79.5	202.0	215,200 *	203,700 *	170,700 *	143,300 *	55
60	78.0	200.6	210,200	192,500	170,500 *	143,200 *	60
65	76.5	199.1	187,100	172,500	159,500	143,000 *	65
70	75.0	197.5	167,900	155,700	144,700	134,700	70
75	73.5	195.7	151,900	141,500	132,000	123,400	75
80	71.9	193.7	138,200	129,200	121,000	113,500	80
85	70.4	191.6	126,300	118,600	111,400	104,800	85
90	68.8	189.3	116,000	109,200	102,900	97,000	90
95	67.2	186.9	106,900	101,000	95,400	90,100	95
100	65.6	184.3	98,900	93,600	88,600	83,900	100
105	63.9	181.5	91,700	87,000	82,500	78,300	105
110	62.2	178.5	85,200	81,000	77,000	73,200	110
115	60.5	175.3	79,400	75,600	72,000	68,500	115
120	58.8	171.9	74,100	70,700	67,400	64,200	120
125	57.0	168.2	69,300	66,200	63,100	60,300	125
130	55.2	164.4	64,800	62,000	59,300	56,600	130
135	53.3	160.2	60,700	58,200	55,700	53,300	135
140	51.4	155.8	57,000	54,600	52,400	50,100	140
145	49.4	151.0	53,500	51,400	49,300	47,200	145
150	47.4	145.9	50,200	48,300	46,400	44,500	150
155	45.3	140.4	47,200	45,400	43,700	42,000	155
160	43.0	134.5	44,400	42,700	41,100	39,600	160
165	40.7	128.1	41,700	40,200	38,700	37,300	165
170	38.2	121.0	39,200	37,800	36,500	35,200	170
175	35.6	113.3	36,800	35,600	34,400	33,200	175



Liftcrane Boom Extended Upper Point Capacities

Boom No. 58 HL with 23.0 ft Extended
Upper Boom Point
296,000 lb Crane Counterweight
60,000 lb Carbody Counterweight
Crawler Machine on a Barge
0 Degree thru 3 Degree Static Machine List
No Travel - 360 Degree Rating - Two Swing Drives

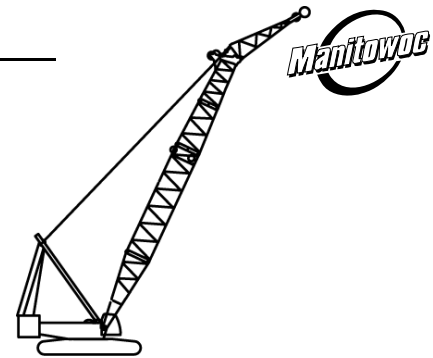


16000 SERIES 2

Oper. Radius Feet	Boom Angle Deg.	Boom Point Elev. Feet	0 Degree List Boom Capacity Pounds	1 Degree List Boom Capacity Pounds	2 Degree List Boom Capacity Pounds	3 Degree List Boom Capacity Pounds	Oper. Radius Feet
196.9 ft							
50	81.8	223.3	215,200 *	198,700 *			50
55	80.4	222.2	215,200 *	198,200 *	162,100 *		55
60	79.1	221.0	209,500	190,200	161,800 *	136,600 *	60
65	77.7	219.6	186,300	170,300	156,300	136,300 *	65
70	76.4	218.1	167,100	153,700	141,800	131,100	70
75	75.0	216.5	151,000	139,600	129,300	120,000	75
80	73.6	214.8	137,200	127,400	118,500	110,400	80
85	72.2	212.9	125,300	116,800	109,000	101,800	85
90	70.8	210.8	115,000	107,500	100,600	94,200	90
95	69.4	208.7	105,800	99,300	93,100	87,400	95
100	67.9	206.3	97,800	91,900	86,400	81,300	100
105	66.5	203.9	90,600	85,300	80,400	75,800	105
110	65.0	201.2	84,100	79,400	74,900	70,800	110
115	63.5	198.4	78,200	74,000	70,000	66,200	115
120	62.0	195.4	72,900	69,100	65,400	62,000	120
125	60.4	192.2	68,100	64,600	61,200	58,100	125
130	58.9	188.9	63,600	60,500	57,400	54,500	130
135	57.3	185.3	59,500	56,600	53,800	51,200	135
140	55.6	181.5	55,800	53,100	50,500	48,100	140
145	53.9	177.5	52,300	49,800	47,500	45,200	145
150	52.2	173.2	49,000	46,800	44,600	42,500	150
155	50.4	168.6	46,000	43,900	41,900	40,000	155
160	48.6	163.8	43,200	41,300	39,400	37,600	160
165	46.8	158.6	40,500	38,800	37,100	35,400	165
170	44.8	153.1	38,000	36,400	34,800	33,300	170
175	42.8	147.2	35,700	34,200	32,700	31,300	175
180	40.7	140.8	33,500	32,100	30,700	29,400	180
185	38.4	133.9	31,400	30,100	28,900	27,600	185
190	36.1	126.4	29,400	28,200	27,100	26,000	190

Liftcrane Boom Extended Upper Point Capacities

Boom No. 58 HL with 23.0 ft Extended
 Upper Boom Point
 296,000 lb Crane Counterweight
 60,000 lb Carbody Counterweight
 Crawler Machine on a Barge
 0 Degree thru 3 Degree Static Machine List
 No Travel - 360 Degree Rating - Two Swing Drives



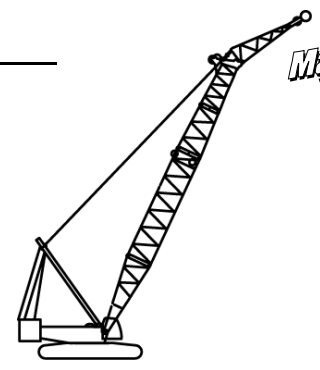
16000 SERIES 2

Oper. Radius Feet	Boom Angle Deg.	Boom Point Elev. Feet	0 Degree List Boom Capacity Pounds	1 Degree List Boom Capacity Pounds	2 Degree List Boom Capacity Pounds	3 Degree List Boom Capacity Pounds	Oper. Radius Feet
216.5 ft							
50	82.5	243.4	215,200 *				50
55	81.2	242.3	215,200 *	185,700 *			55
60	80.0	241.2	209,000	183,900 *	152,500 *	129,500 *	60
65	78.8	240.0	185,700	168,400	151,900 *	129,000 *	65
70	77.5	238.6	166,500	151,900	139,100	127,800	70
75	76.3	237.1	150,300	137,900	126,800	117,000	75
80	75.0	235.6	136,500	125,800	116,200	107,600	80
85	73.8	233.8	124,500	115,300	106,800	99,200	85
90	72.5	232.0	114,200	106,000	98,600	91,800	90
95	71.2	230.0	105,000	97,800	91,200	85,100	95
100	69.9	227.9	96,900	90,500	84,600	79,100	100
105	68.6	225.7	89,700	84,000	78,600	73,700	105
110	67.3	223.3	83,200	78,100	73,200	68,700	110
115	65.9	220.8	77,300	72,700	68,300	64,200	115
120	64.5	218.1	72,000	67,800	63,800	60,100	120
125	63.2	215.3	67,200	63,300	59,700	56,200	125
130	61.8	212.3	62,700	59,200	55,900	52,700	130
135	60.4	209.2	58,600	55,400	52,300	49,400	135
140	58.9	205.8	54,800	51,900	49,100	46,400	140
145	57.4	202.3	51,400	48,600	46,000	43,500	145
150	56.0	198.6	48,100	45,600	43,200	40,900	150
155	54.4	194.7	45,100	42,800	40,500	38,400	155
160	52.9	190.5	42,300	40,100	38,000	36,000	160
165	51.3	186.1	39,600	37,600	35,700	33,900	165
170	49.6	181.5	37,100	35,300	33,500	31,800	170
175	48.0	176.6	34,800	33,100	31,400	29,800	175
180	46.2	171.4	32,600	31,000	29,500	28,000	180
185	44.4	165.8	30,500	29,100	27,600	26,200	185
190	42.6	159.9	28,500	27,200	25,900	24,500	190
195	40.6	153.5	26,700	25,400	24,200	23,000	195
200	38.6	146.7	24,900	23,700	22,600	21,400	200
205	36.5	139.4	23,200	22,100	21,100	20,000	205



Liftcrane Boom Extended Upper Point Capacities

Boom No. 58 HL with 23.0 ft Extended
Upper Boom Point
296,000 lb Crane Counterweight
60,000 lb Carbody Counterweight
Crawler Machine on a Barge
0 Degree thru 3 Degree Static Machine List
No Travel - 360 Degree Rating - Two Swing Drives

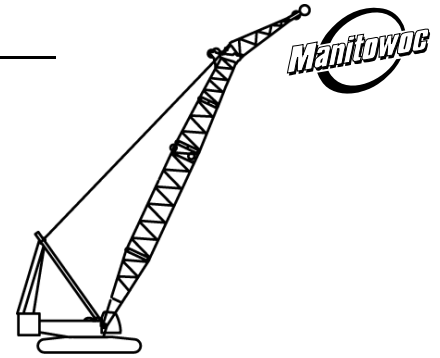


16000 SERIES 2

Oper. Radius Feet	Boom Angle Deg.	Boom Point Elev. Feet	0 Degree List Boom Capacity Pounds	1 Degree List Boom Capacity Pounds	2 Degree List Boom Capacity Pounds	3 Degree List Boom Capacity Pounds	Oper. Radius Feet
236.2 ft							
55	81.9	262.4	215,200 *	174,300 *			55
60	80.8	261.4	208,300	172,500 *	142,500 *		60
65	79.7	260.2	184,900	166,200	141,700 *	117,200 *	65
70	78.5	259.0	165,500	149,900	136,200	116,700 *	70
75	77.4	257.6	149,300	135,900	124,100	113,700	75
80	76.2	256.2	135,400	123,900	113,600	104,500	80
85	75.0	254.6	123,400	113,400	104,400	96,300	85
90	73.9	252.9	113,000	104,200	96,200	89,000	90
95	72.7	251.1	103,800	96,100	88,900	82,400	95
100	71.5	249.2	95,700	88,800	82,400	76,500	100
105	70.3	247.2	88,500	82,300	76,500	71,200	105
110	69.1	245.0	81,900	76,400	71,100	66,300	110
115	67.9	242.7	76,100	71,000	66,300	61,900	115
120	66.7	240.3	70,700	66,100	61,800	57,800	120
125	65.4	237.8	65,800	61,700	57,700	54,000	125
130	64.2	235.1	61,400	57,600	53,900	50,500	130
135	62.9	232.2	57,300	53,800	50,400	47,300	135
140	61.6	229.2	53,500	50,300	47,200	44,200	140
145	60.3	226.1	50,000	47,000	44,100	41,400	145
150	59.0	222.8	46,700	44,000	41,300	38,800	150
155	57.6	219.3	43,700	41,200	38,700	36,300	155
160	56.2	215.7	40,900	38,500	36,200	34,000	160
165	54.8	211.8	38,200	36,000	33,900	31,900	165
170	53.4	207.8	35,700	33,700	31,700	29,800	170
175	52.0	203.5	33,400	31,500	29,700	27,900	175
180	50.5	199.1	31,200	29,400	27,700	26,000	180
185	48.9	194.3	29,100	27,500	25,900	24,300	185
190	47.4	189.3	27,200	25,600	24,100	22,600	190
195	45.8	184.1	25,300	23,900	22,500	21,100	195
200	44.1	178.5	23,500	22,200	20,900	19,600	200
205	42.4	172.6	21,900	20,600	19,400	18,200	205
210	40.6	166.3	20,300	19,100	17,900	16,800	210
215	38.8	159.5	18,700	17,600	16,600	15,500	215
220	36.8	152.3	17,300	16,200	15,200	14,200	220

Liftcrane Boom Extended Upper Point Capacities

Boom No. 58 HL with 23.0 ft Extended
Upper Boom Point
296,000 lb Crane Counterweight
60,000 lb Carbody Counterweight
Crawler Machine on a Barge
0 Degree thru 3 Degree Static Machine List
No Travel - 360 Degree Rating - Two Swing Drives



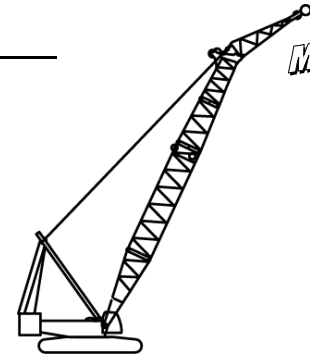
16000 SERIES 2

Oper. Radius Feet	Boom Angle Deg.	Boom Point Elev. Feet	0 Degree List Boom Capacity Pounds	1 Degree List Boom Capacity Pounds	2 Degree List Boom Capacity Pounds	3 Degree List Boom Capacity Pounds	Oper. Radius Feet
255.9 ft							
55	82.5	282.4	201,500 *				55
60	81.5	281.5	196,800 *	148,600 *			60
65	80.4	280.4	184,200	147,600 *	117,700 *		65
70	79.3	279.2	164,800	146,800 *	117,000 *	95,800 *	70
75	78.3	278.0	148,400	134,100	116,400 *	95,300 *	75
80	77.2	276.6	134,500	122,100	111,200	94,900 *	80
85	76.1	275.2	122,500	111,700	102,100	93,500	85
90	75.1	273.6	112,000	102,600	94,000	86,400	90
95	74.0	272.0	102,800	94,400	86,800	80,000	95
100	72.9	270.2	94,700	87,200	80,400	74,200	100
105	71.8	268.4	87,400	80,700	74,500	68,900	105
110	70.7	266.4	80,800	74,800	69,200	64,100	110
115	69.6	264.3	74,900	69,500	64,400	59,700	115
120	68.4	262.1	69,600	64,600	60,000	55,700	120
125	67.3	259.7	64,700	60,200	55,900	51,900	125
130	66.2	257.3	60,200	56,100	52,100	48,500	130
135	65.0	254.7	56,100	52,300	48,700	45,300	135
140	63.8	252.0	52,300	48,800	45,500	42,300	140
145	62.6	249.1	48,800	45,500	42,500	39,500	145
150	61.4	246.2	45,500	42,500	39,700	36,900	150
155	60.2	243.0	42,500	39,700	37,000	34,500	155
160	59.0	239.8	39,700	37,100	34,600	32,200	160
165	57.7	236.3	37,000	34,600	32,300	30,100	165
170	56.5	232.7	34,500	32,300	30,100	28,000	170
175	55.2	229.0	32,200	30,100	28,100	26,100	175
180	53.9	225.0	30,000	28,000	26,100	24,300	180
185	52.5	220.9	27,900	26,100	24,300	22,600	185
190	51.2	216.5	25,900	24,200	22,600	20,900	190
195	49.8	211.9	24,100	22,500	20,900	19,400	195
200	48.4	207.2	22,300	20,800	19,300	17,900	200
205	46.9	202.1	20,600	19,200	17,800	16,500	205
210	45.4	196.8	19,000	17,700	16,400	15,100	210
215	43.8	191.2	17,500	16,300	15,100	13,900	215
220	42.2	185.3	16,100	14,900	13,800	12,600	220
225	40.6	179.0	14,700	13,600	12,500	11,400	225
230	38.9	172.4	13,300	12,300	11,300	10,300	230
235	37.1	165.2	12,100	11,100	10,200	9,200	235
240	35.2	157.6	10,800	10,000	9,100	8,200	240



Liftcrane Boom Extended Upper Point Capacities

Boom No. 58 HL with 23.0 ft Extended
Upper Boom Point
296,000 lb Crane Counterweight
60,000 lb Carbody Counterweight
Crawler Machine on a Barge
0 Degree thru 3 Degree Static Machine List
No Travel - 360 Degree Rating - Two Swing Drives



16000 SERIES 2

Oper. Radius Feet	Boom Angle Deg.	Boom Point Elev. Feet	0 Degree List Boom Capacity Pounds	1 Degree List Boom Capacity Pounds	2 Degree List Boom Capacity Pounds	3 Degree List Boom Capacity Pounds	Oper. Radius Feet
275.6 ft							
55	83.0	302.4	193,700 *				55
60	82.0	301.5	190,100 *	126,800 *			60
65	81.0	300.5	183,400	125,900 *			65
70	80.1	299.4	163,900	125,000 *	98,600 *		70
75	79.1	298.3	147,500	124,100 *	97,900 *	79,200 *	75
80	78.1	297.0	133,500	120,200	97,300 *	78,800 *	80
85	77.1	295.7	121,400	109,900	96,800 *	78,300 *	85
90	76.1	294.2	110,900	100,700	91,700	77,900 *	90
95	75.1	292.7	101,600	92,700	84,600	77,300	95
100	74.1	291.0	93,400	85,400	78,200	71,600	100
105	73.1	289.3	86,100	78,900	72,400	66,400	105
110	72.0	287.5	79,600	73,100	67,100	61,700	110
115	71.0	285.5	73,600	67,800	62,300	57,400	115
120	70.0	283.5	68,200	62,900	57,900	53,400	120
125	68.9	281.4	63,300	58,500	53,900	49,700	125
130	67.9	279.1	58,800	54,400	50,200	46,300	130
135	66.8	276.7	54,700	50,600	46,700	43,100	135
140	65.7	274.3	50,900	47,100	43,500	40,200	140
145	64.6	271.7	47,400	43,900	40,500	37,400	145
150	63.5	268.9	44,100	40,900	37,800	34,900	150
155	62.4	266.1	41,100	38,000	35,200	32,400	155
160	61.3	263.1	38,200	35,400	32,700	30,200	160
165	60.2	260.0	35,500	32,900	30,400	28,000	165
170	59.0	256.7	33,100	30,600	28,300	26,000	170
175	57.9	253.3	30,700	28,400	26,200	24,100	175
180	56.7	249.8	28,500	26,400	24,300	22,300	180
185	55.5	246.1	26,400	24,400	22,500	20,600	185
190	54.3	242.2	24,500	22,600	20,800	19,000	190
195	53.0	238.1	22,600	20,800	19,100	17,500	195
200	51.8	233.9	20,800	19,200	17,600	16,000	200
205	50.5	229.5	19,200	17,600	16,100	14,600	205
210	49.2	224.8	17,600	16,100	14,700	13,300	210
215	47.8	220.0	16,000	14,700	13,300	12,000	215
220	46.5	214.9	14,600	13,300	12,000	10,800	220
225	45.1	209.5	13,200	12,000	10,800	9,600	225
230	43.6	203.9	11,900	10,700	9,600	8,500	230
235	42.1	198.0	10,600	9,500	8,400	7,400	235
240	40.6	191.8	9,400	8,400	7,300		240
245	39.0	185.1	8,200	7,300			245
250	37.3	178.1	7,100				250