

ROTATING UPPERWORKS WEIGHT AND CENTER OF GRAVITY (WU)			
EQUIPPED AS	WEIGHT (lbs)	DIM "A" (in.)	DIM "B" (in.)
16000 SERIES 1 (224,000 lb. CTWT)	320,085	189.3	-9.0
16000 SERIES 2 (298,000 lb. CTWT)	392,085	198.9	-1.5
16000 SERIES 3 (332,000 lb. CTWT)	428,085	202.5	2.5
LOWERWORKS WEIGHT AND CENTER OF GRAVITY (WL)			
EQUIPPED AS	WEIGHT (lbs)	DIM "C" (in.)	DIM "D" (in.)
16000 SERIES 1 WITH 0 lb. CARBODY COUNTERWEIGHT	176,245	0	-76.2
16000 SERIES 2 WITH 60,000 lb. CARBODY COUNTERWEIGHT	236,245	0	-75.5
16000 SERIES 3 WITH 120,000 lb. CARBODY COUNTERWEIGHT	296,245	0	-75.1

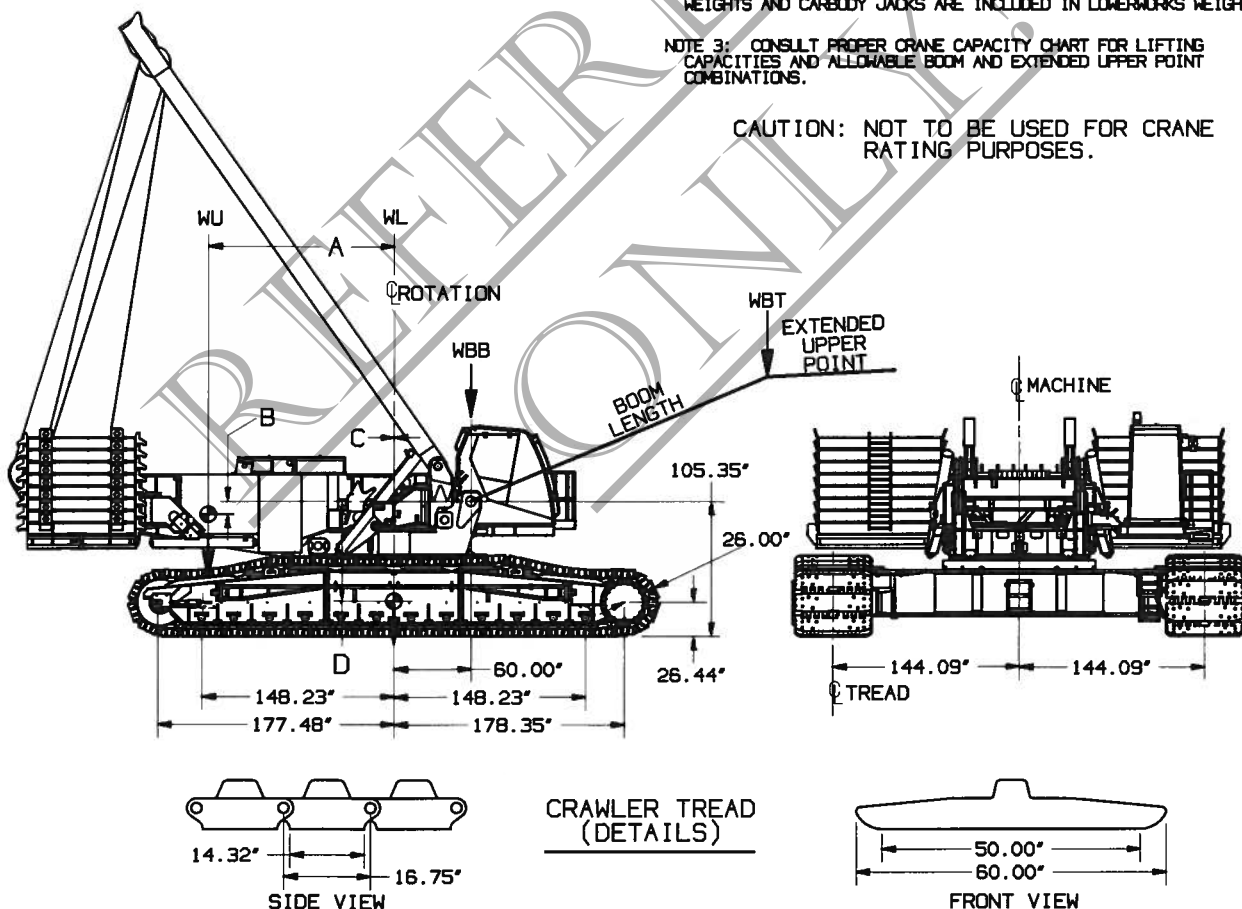
BOOM WEIGHTS			BOOM WEIGHTS		
BOOM LENGTH (ft.)	#58 HL		BOOM LENGTH (ft.)	#58 HL WITH EXTENDED UPPER POINT	
	WBB (lbs)	WBT (lbs)		WBB (lbs)	WBT (lbs)
98.4	55,915	42,210	216.5	75,664	52,360
118.1	60,511	43,477	236.2	79,163	54,733
137.8	63,869	43,984	255.9	81,369	56,823
157.5	67,762	45,990	275.6	84,785	59,282
177.2	70,415	47,238	295.3	86,786	61,167
196.9	74,031	49,534			
216.5	76,328	51,156			
236.2	79,814	53,588			
255.9	82,013	55,733			
275.6	85,426	58,242			
295.3	87,428	60,174			
315.0	90,798	62,728			

NOTE 1: BOOM WEIGHTS INCLUDE WEIGHT OF BOOM, BOOM STRAPS ETC., BUT DO NOT INCLUDE WEIGHT OF LOAD, LOAD BLOCKS, WEIGHT BALL, SLINGS, HOIST LINES, ETC. ALL ITEMS SUSPENDED FROM BOOM MUST BE CONSIDERED PART OF THE LOAD.

NOTE 2: OPTIONAL UPPERWORKS JACKS ARE INCLUDED IN UPPERWORKS HEIGHTS AND CARBODY JACKS ARE INCLUDED IN LOWERWORKS HEIGHTS.

NOTE 3: CONSULT PROPER CRANE CAPACITY CHART FOR LIFTING CAPACITIES AND ALLOWABLE BOOM AND EXTENDED UPPER POINT COMBINATIONS.

CAUTION: NOT TO BE USED FOR CRANE RATING PURPOSES.



DATE 1-22-10	SCALE NONE	MANITOWOC CRANES, INC. MANITOWOC, WISCONSIN	C G CHART	
	DR. RAH		60" TREADS	
DWG. NO. T.S. 343	CK. JLD	MODEL 16000	BOOM NO.58 HL	
	APP.			