

ROTATING UPPERWORKS WEIGHT AND CENTER OF GRAVITY (WU)			
EQUIPPED AS	WEIGHT (lbs)	DIM "A" (in.)	DIM "B" (in.)
16000 SERIES 1 (224,000 lb. CTWT)	320,085	189.3	-9.0
16000 SERIES 2 (296,000 lb. CTWT)	392,085	198.9	-1.5
16000 SERIES 3 (332,000 lb. CTWT)	428,085	202.5	2.5
LOWERWORKS WEIGHT AND CENTER OF GRAVITY (WL)			
EQUIPPED AS	WEIGHT (lbs)	DIM "C" (in.)	DIM "D" (in.)
16000 SERIES 1 WITH 0 lb. CARBODY COUNTERWEIGHT	176,245	0	-76.2
16000 SERIES 2 WITH 60,000 lb. CARBODY COUNTERWEIGHT	236,245	0	-75.5
16000 SERIES 3 WITH 120,000 lb. CARBODY COUNTERWEIGHT	296,245	0	-75.1

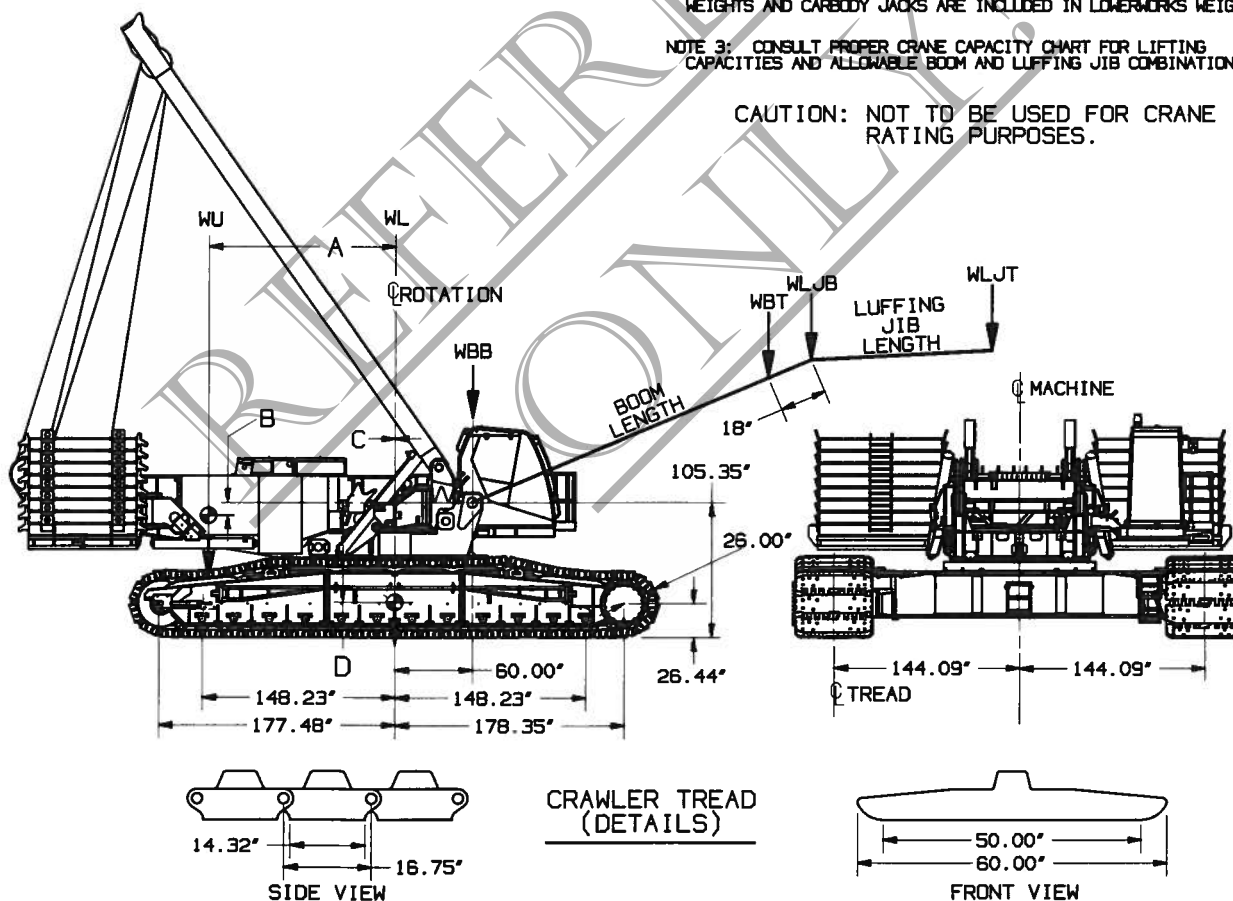
BOOM WEIGHTS			LUFFING JIB WEIGHTS		
BOOM LENGTH (ft.)	#58 HL		LUFFING JIB LENGTH (ft.)	#59	
	WBB (lbs)	WBT (lbs)		WLJB (lbs)	WLJT (lbs)
98.4	47,109	51,203	78.7	18,736	15,896
118.1	51,587	53,457	98.4	20,528	17,095
137.8	55,020	54,592	118.1	22,835	18,803
157.5	59,068	57,297	137.8	24,339	20,290
177.2	61,914	59,048	157.5	26,573	22,070
196.9	65,796	61,928	177.2	27,979	23,656
216.5	68,297	64,041	196.9	30,198	25,452
			216.5	31,639	27,484
			236.2	33,833	29,194
			255.9	35,236	30,836
			275.6	37,461	32,684

NOTE 1: BOOM AND JIB WEIGHTS INCLUDE WEIGHT OF BOOM, BOOM STRAPS, JIB, JIB STRAPS, ETC.; BUT DO NOT INCLUDE WEIGHT OF LOAD, LOAD BLOCK, WEIGHT BALL, SLINGS, ETC. ALL ITEMS SUSPENDED FROM BOOM OR JIB MUST BE CONSIDERED PART OF THE LOAD.

NOTE 2: OPTIONAL UPPERWORKS JACKS ARE INCLUDED IN UPPERWORKS WEIGHTS AND CARBODY JACKS ARE INCLUDED IN LOWERWORKS WEIGHTS.

NOTE 3: CONSULT PROPER CRANE CAPACITY CHART FOR LIFTING CAPACITIES AND ALLOWABLE BOOM AND LUFFING JIB COMBINATIONS.

CAUTION: NOT TO BE USED FOR CRANE RATING PURPOSES.



DATE 1-22-10	SCALE NONE	MANITOWOC CRANES, INC. MANITOWOC, WISCONSIN	C G CHART
	DR. RAH		60" TREADS
DWG. NO. T.S. 344	CK. JLD	MODEL 16000	BOOM NO.58 HL
	APP.		LUFFING JIB NO. 59