

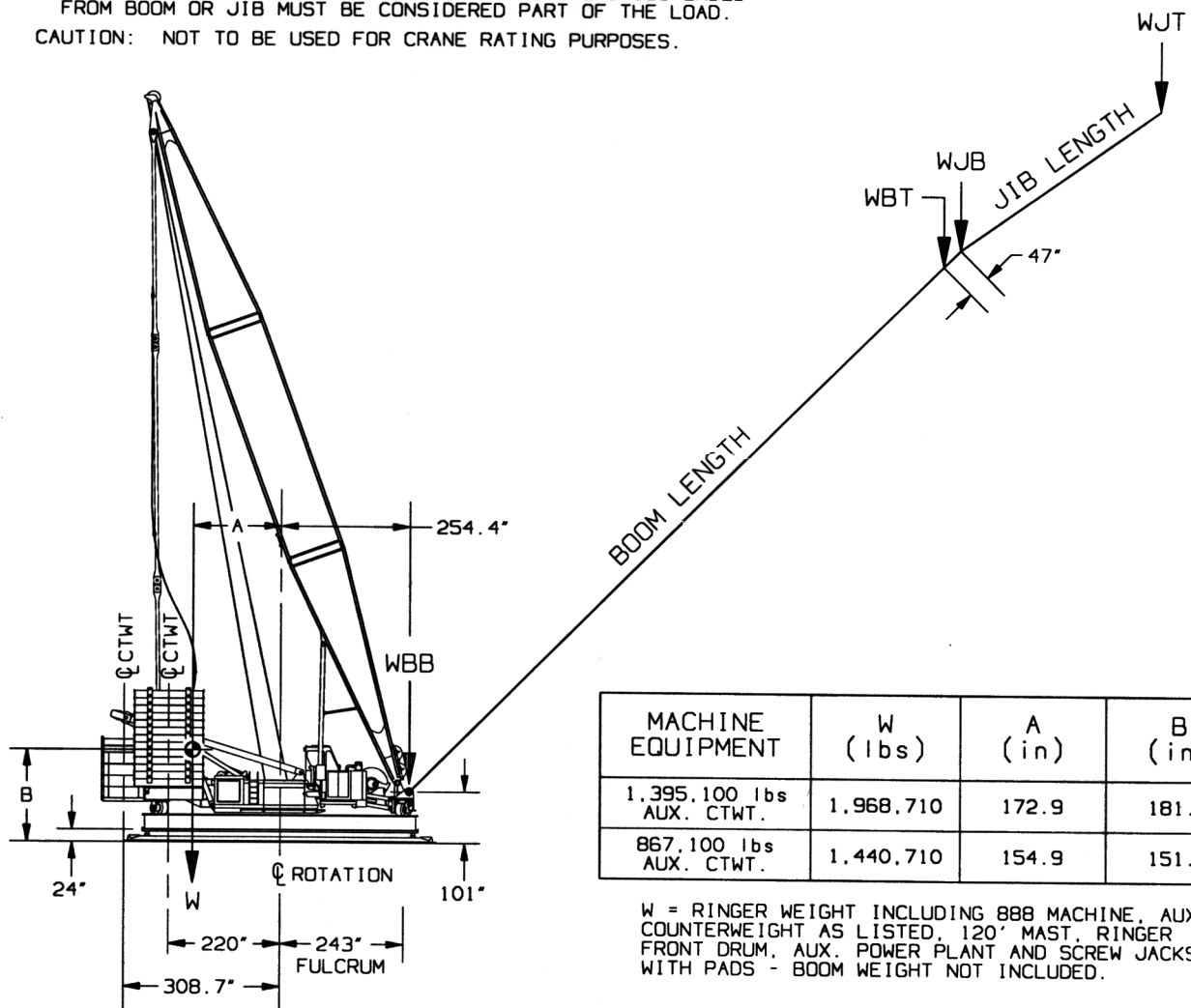
NO.67B BOOM WEIGHTS (WITHOUT JIB)		
LENGTH (ft)	WBB (lbs)	WBT (lbs)
125	39,980	50,500
150	44,700	54,340
175	50,150	59,620
200	54,520	63,830
225	58,980	68,440
250	63,980	73,430
275	68,630	77,500
300	73,630	82,510
325	78,140	86,730
350	83,140	91,720
375	87,560	96,040
400	92,570	101,030
425	96,920	105,420

NO.67B BOOM WEIGHTS (WITH JIB)		
LENGTH (ft)	WBB (lbs)	WBT (lbs)
125	41,360	77,480
150	46,690	81,680
175	53,000	87,520
200	57,930	92,140
225	63,070	97,490
250	68,680	102,850
275	69,710	105,800
300	75,110	111,390
325	80,240	116,420
350	85,660	121,990
375	90,700	127,110

NO.22EL JIB WEIGHTS		
LENGTH (ft)	WJB (lbs)	WJT (lbs)
70	12,030	14,400
80	13,490	15,450
100	15,110	16,490
120	17,420	18,110
140	19,020	19,070
160	20,340	20,400
180	22,520	21,890
200	23,790	23,280
220	25,780	24,660
240	27,720	26,200
260	28,270	27,380
280	30,200	28,940
300	31,430	30,280

NOTE:
BOOM AND JIB WEIGHTS INCLUDE WEIGHT OF BOOM, JIB,
PENDANTS ETC.; BUT DO NOT INCLUDE WEIGHT OF LOAD, LOAD
BLOCK, WEIGHT BALL, SLINGS, ETC.. ALL ITEMS SUSPENDED
FROM BOOM OR JIB MUST BE CONSIDERED PART OF THE LOAD.

CAUTION: NOT TO BE USED FOR CRANE RATING PURPOSES.



DATE	SCALE	MANITOWOC CRANES, INC. MANITOWOC, WISCONSIN	C.G. CHART
08-06-97	DR. NVS		
DWG. NO.	CK. TWB	MODEL 888 RINGER	NO.67B BOOM
T.S. 320	APP. TWB		NO.22EL JIB