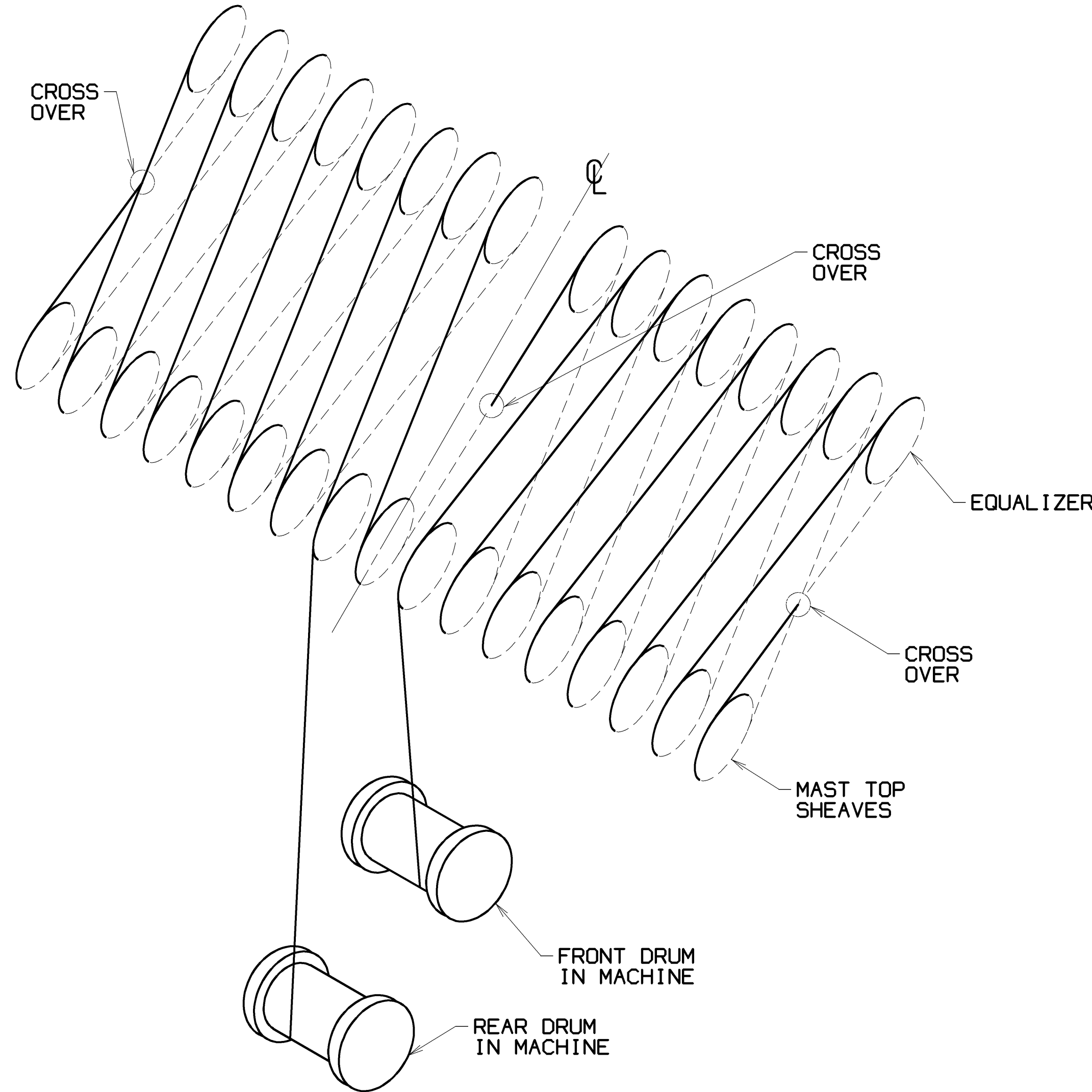
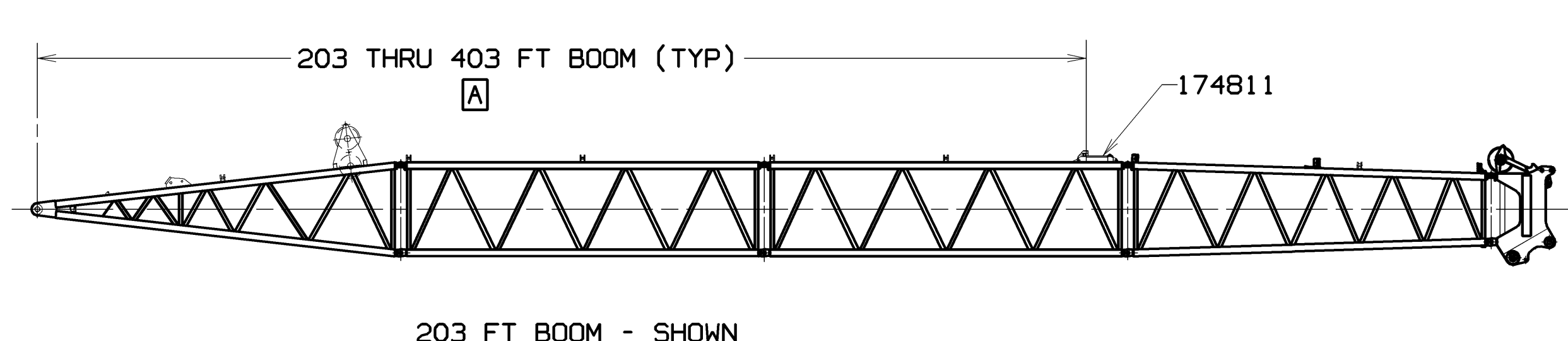
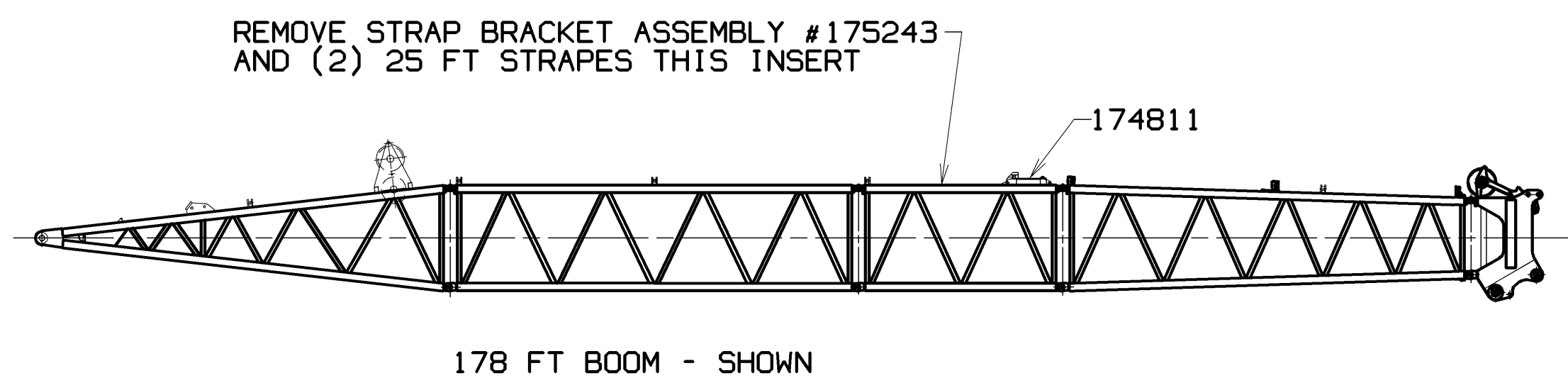
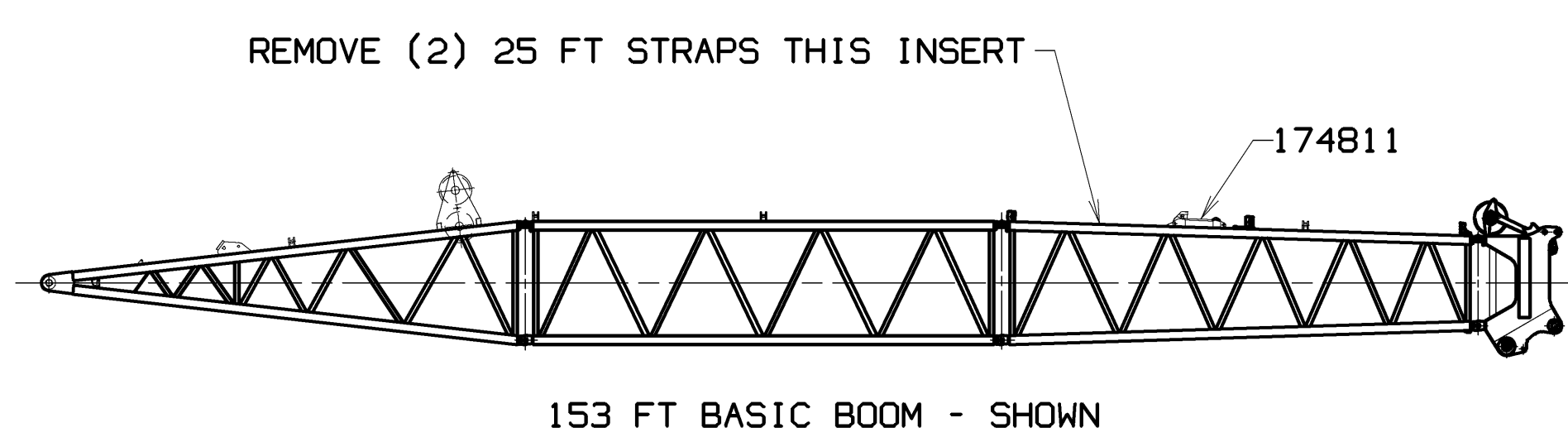
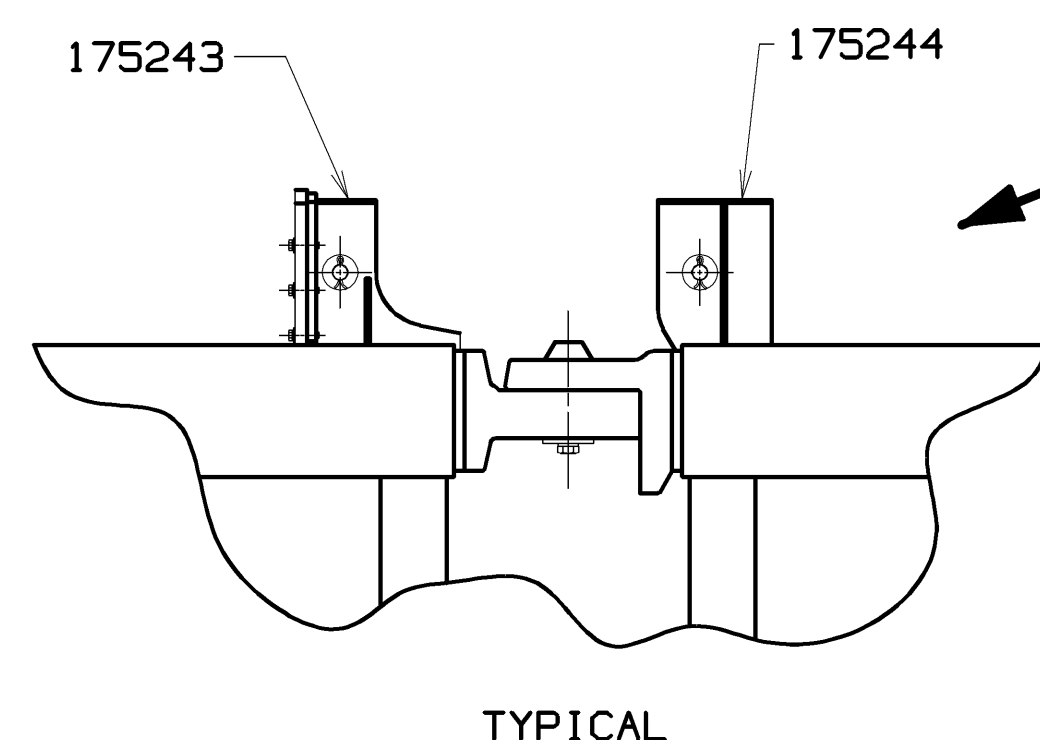
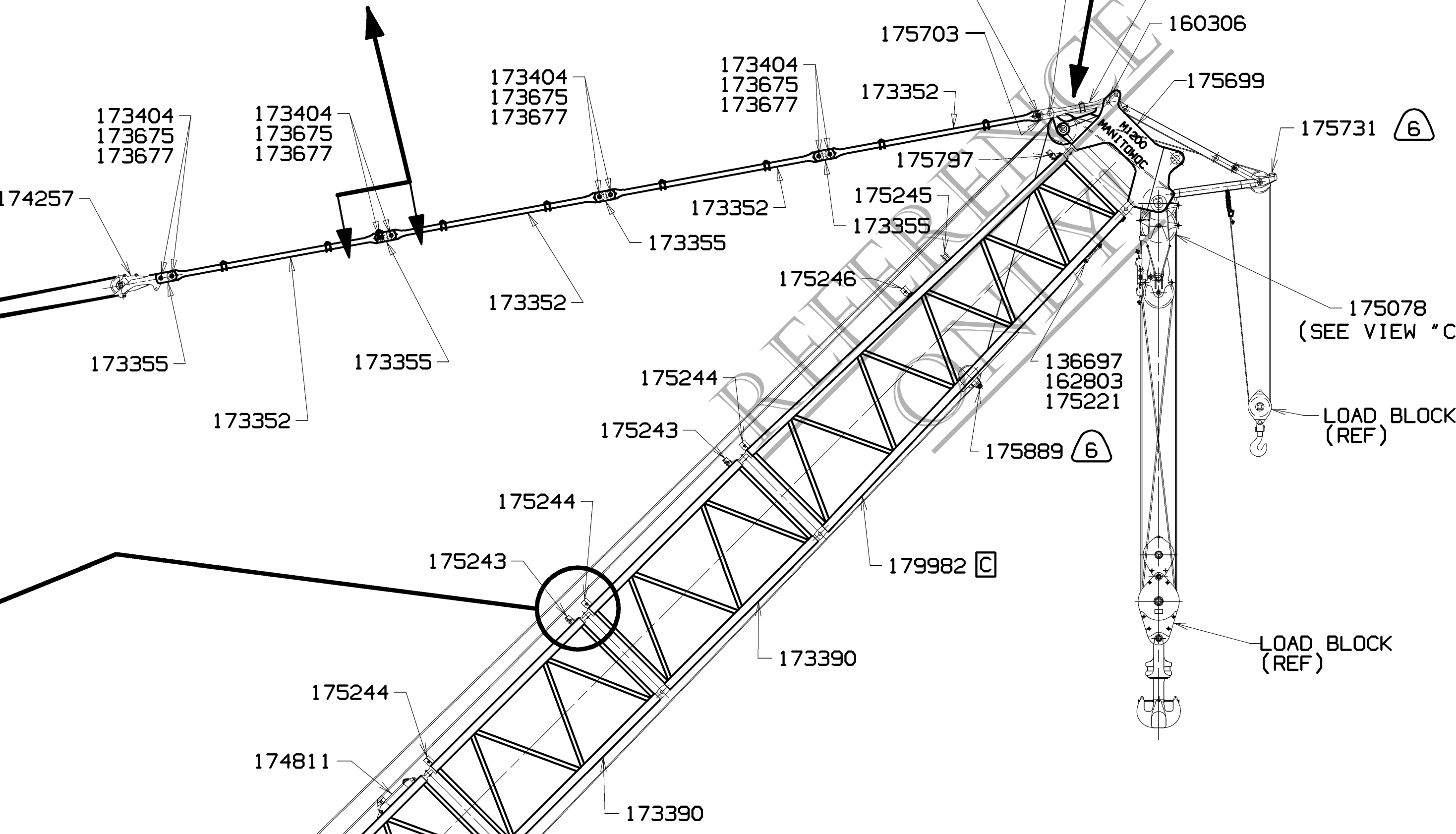
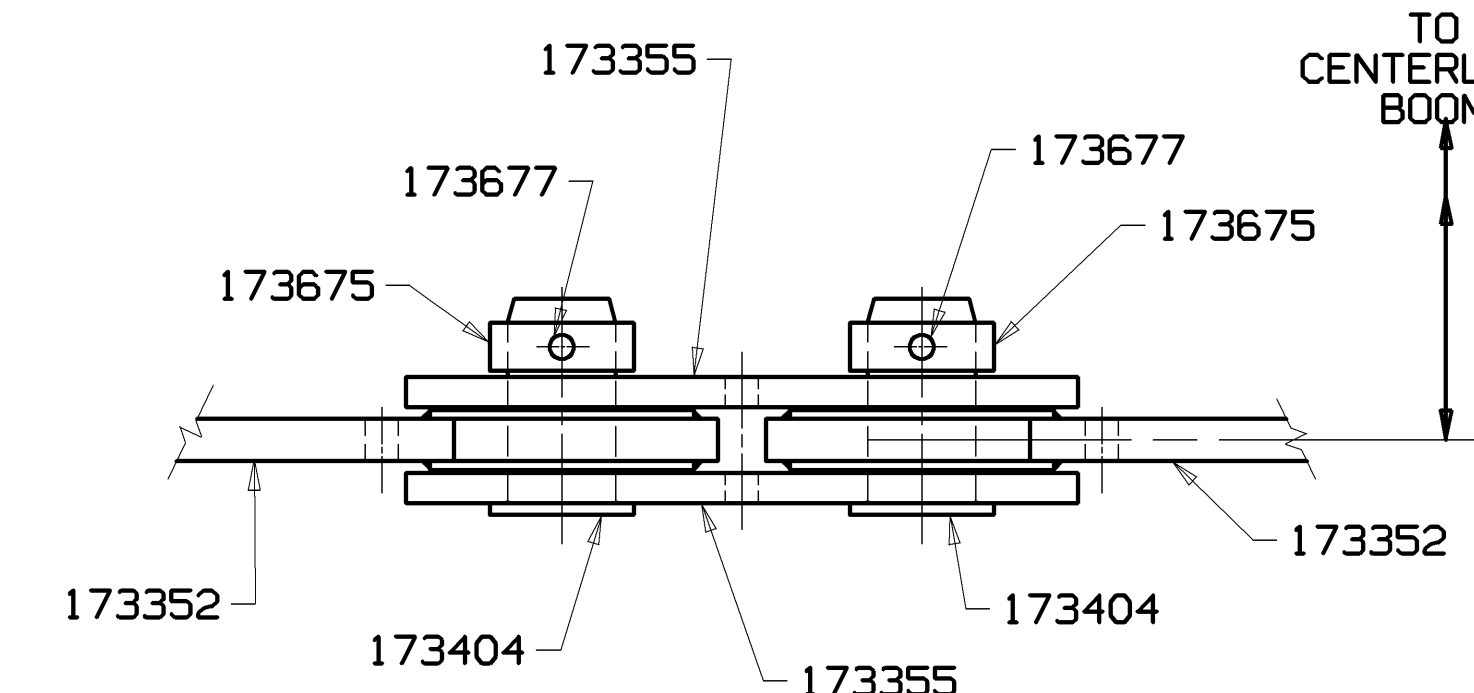
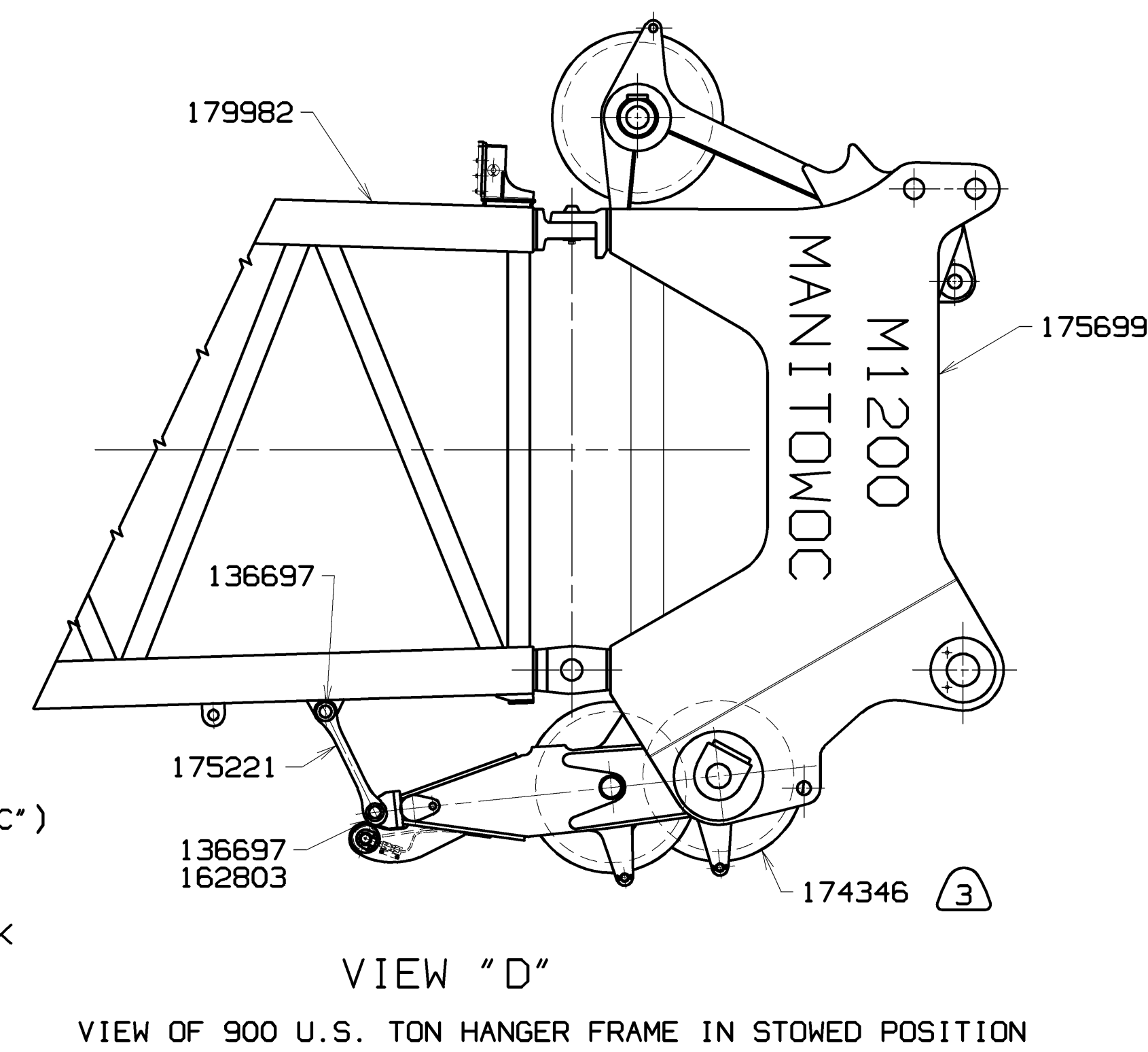
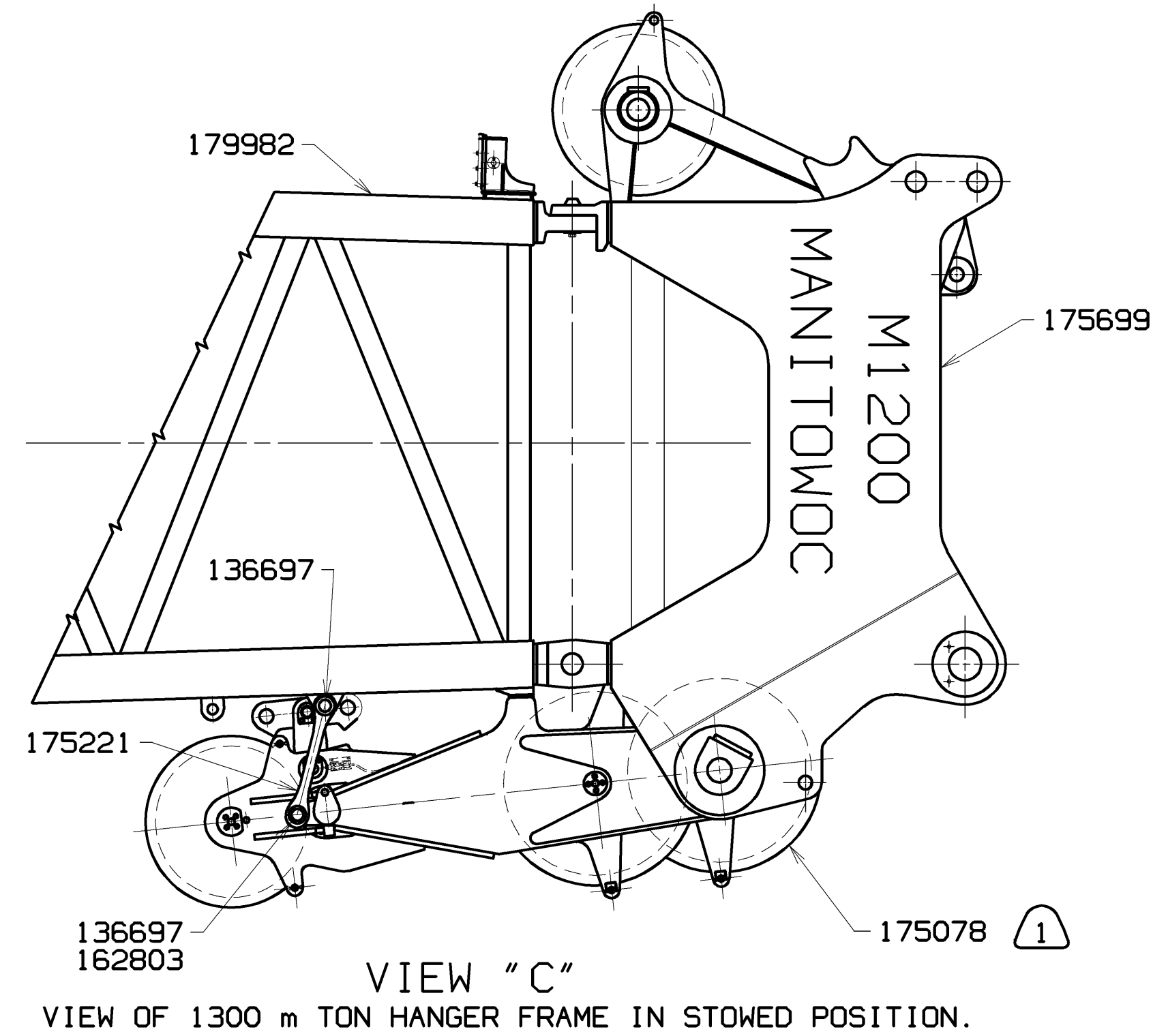
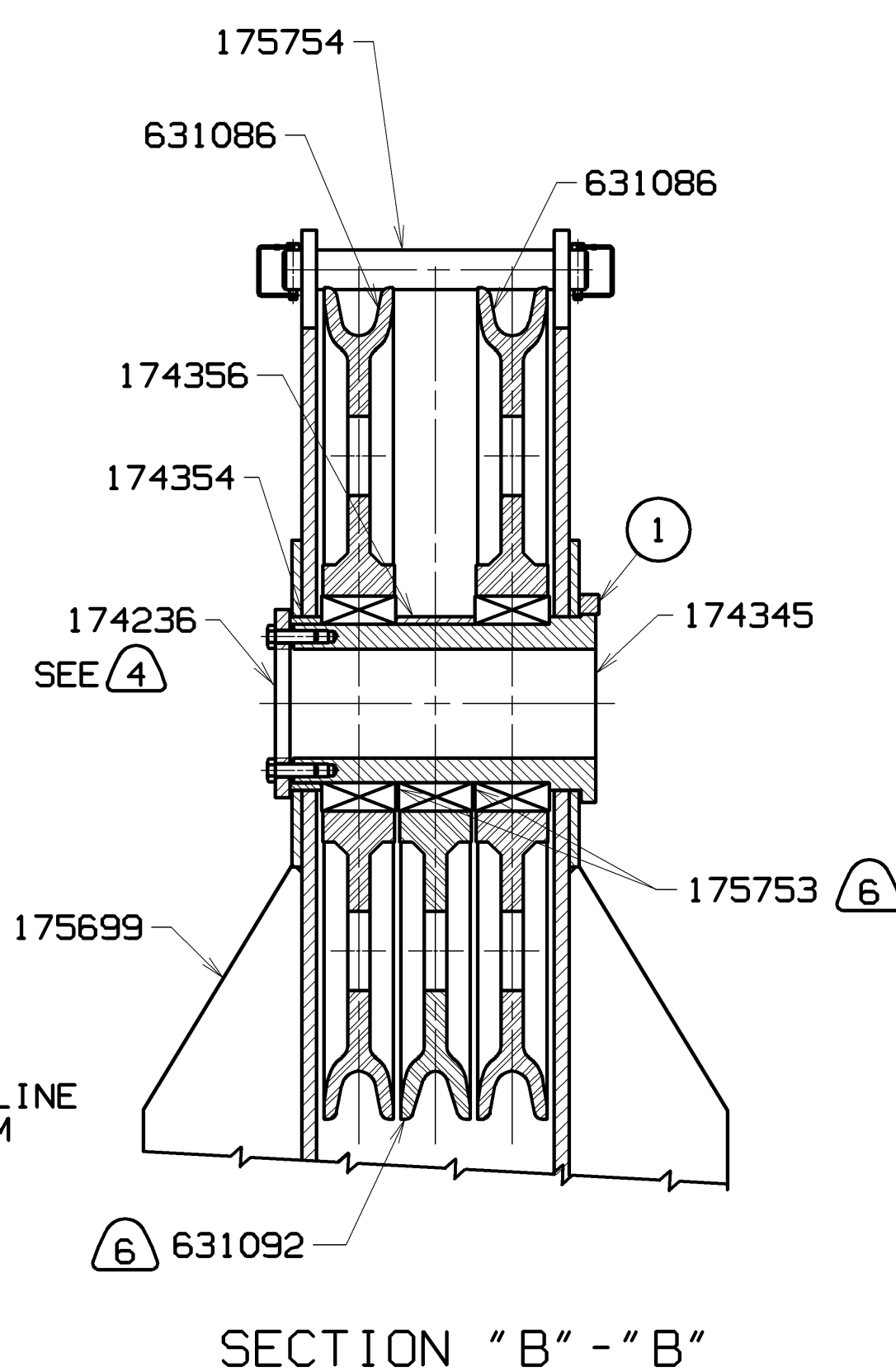
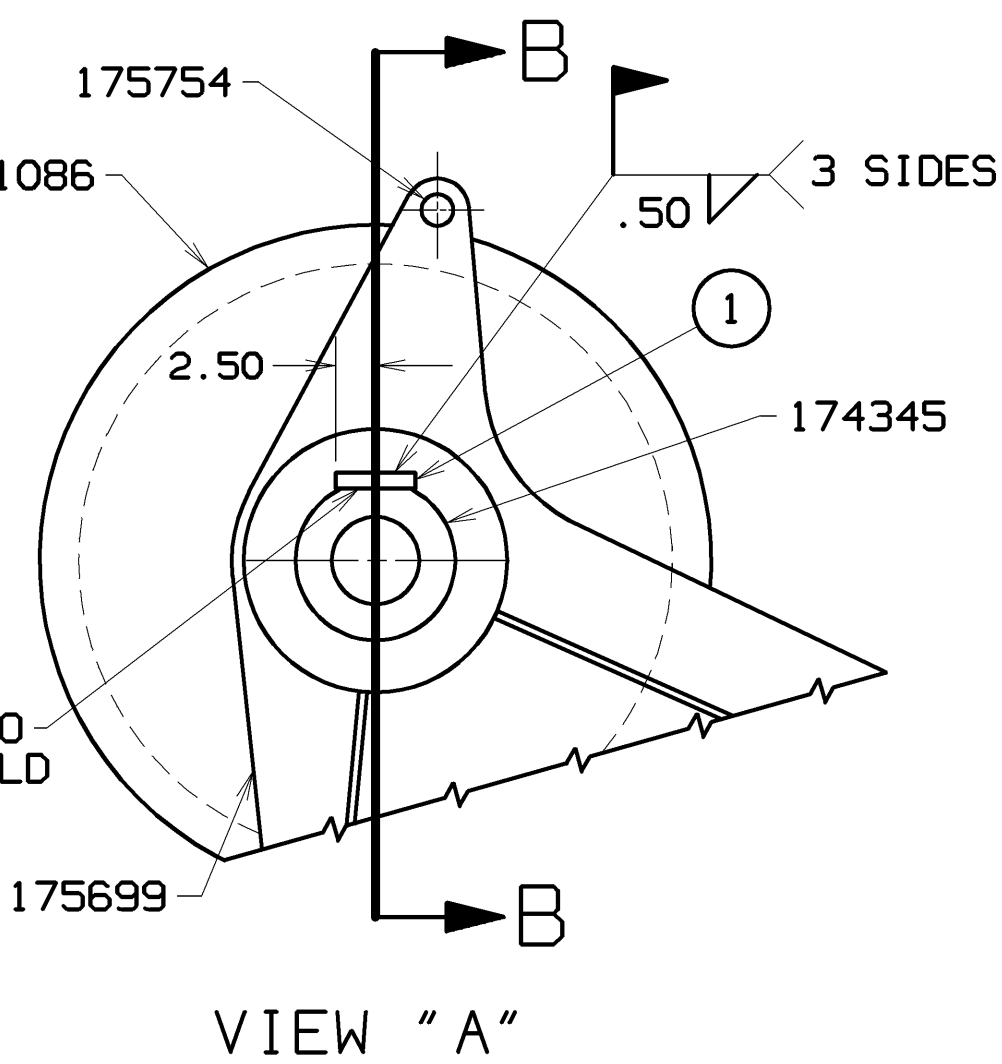


BILL OF MATERIAL					ASSEMBLIES USED IN
ITEM NO.	REV.	DESCRIPTION	QUANTITY	MATERIAL	DATE
REVISIONS					
10-3-95 CRP					
278 FT TO					
403 FT BOOM					
ADDED -					
50 FT STRAP					
173353 ADDED					
BILL OF MAT'L					
DELTA AND					
TABLE MOVED					
TO SHIT 3					
- WAS SHEET					
1 OF 2					
A) WAS 253 FT					
2-5-95 CRP					
B) ADDED					
12-19-97 ACK					
C) WAS 173435					
07-15-09 SAV					
D) ADDED					
OPTION 719394					
E) REMOVED					
OPTIONS 719370					
& 719385					



BOOM HOIST REEVING DIAGRAM FOR 32 PART LINE  
 9,000 FT (2,743.2 M) OF 1.00 FLEX-X 626 (113,800 LBS. BREAKING STRENGTH)  
 MEC CODE NO. 719369 SEE (2) OR  
 ALTERNATE WIRE ROPE  
 9,000 FT (2,743.2 M) OF 1.00 CONSTRUCTEX. (125,000 LBS. BREAKING STRENGTH)  
 MEC CODE NO. 719394 SEE (2)



EQUALIZER SUPPORT LOCATIONS

SUPERSEDES 173399 OF 7-25-94

THIS PRINT REMAINS THE PROPERTY OF MANITOWOC CRANES, INC. IF IT IS LOANED, SUBJECT TO RETURN UPON ORDER, AND ON EXPRESS CONDITION THAT IT IS NOT TO BE COPIED OR USED DIRECTLY OR INDIRECTLY IN ANY WAY WHATSOEVER DETRIMENTAL TO OUR INTERESTS.		TOLERANCE UNLESS OTHERWISE SPECIFIED		MACHINING		MANITOWOC CRANES, INC.		BOOM RIGGING ASSEMBLY	
DECIMAL PLACES	FRACTIONS	± 10 FEET	± 10 FEET	± .005	± .015	DR: R.J.W.	MODEL: M-1200R	# 72 BOOM	173399
(1) PLACE 0.0	± .12	± .18	± .05	± .015	± .005	CK: R.J.W.	APP: R.J.W.	# 75 OR 75A MAST	
(2) PLACE 0.00	± .06	± .12	± .015	± .005	± .005				
(3) PLACE 0.000	± .03	± .06	± .015	± .005	± .005				
ANGLES	± 1°	± 30'	± 30'	± 30'	± 30'				

DO NOT SCALE THIS DRAWING



SHT 2 OF 3

- 1

1300 m TON
- 2

1.00 WIRE ROPE FOR USE WITH OPTIONAL  
LAGGING #502369 (REF. DRUM SHAFT ASSEMBLY)  
NEITHER 25 mm NOR 26 mm METRIC ROPE WILL  
SPOOL CORRECTLY FOR THIS LAGGING AND SHOULD  
NOT BE CONSIDERED AS ALTERNATE ROPES.
- 3

900 U.S. TON
- 4

BOLT TORQUE: (WITH LOCTITE #271)  
APPLY TO THDS. LOCTITE #271 (MEC CODE NO. 622292)  
CAPSCREWS W/END PLATE 174236 TORQUE TO 115 FT. LBS.
- 5

NEVER-SEEZ:  
APPLY NEVER-SEEZ OR EQUIVALENT TO THE FOLLOWING:  
ALL SLEEVE I.D.
- 6

SEE OPTIONAL 90T UPPER POINT BILL OF MATERIAL

OPTIONAL		
1	MAST ASSEMBLY (75A MAST)	175674

OPTIONAL - 900T		
1	LOWER BM POINT HANGER FRAME ASSY	1743463

OPTIONAL - 90T UPPER POINT WITH 1.125 WIRE ROPE		
1	BOOM POINT ASSEMBLY-UPPER	175731
2	SPACER	175753
1	WIRE ROPE GUIDE ASSEMBLY	175882
1	WIRE ROPE GUIDE ASSEMBLY	175889
1	SHEAVE 42.00 DIA, 1.12 ROPE - STEEL	631092

BILL OF MATERIAL							ASSEMBLIES USED ON
ITEM NO.	QTY REQD	SEC- TION	DESCRIPTION	LENGTH IN.	MATERIAL	CODE NO. OR DWG. NO.	
1	1		1.00 X 1.00	5.00	CF 1018	174346-9	12-19-97 ACK A WAS 173435
4			PIN			136697	
2			PIN			160306	
4			WASHER			162803	
1			BOOM ANGLE INDICATOR ASSEMBLY			168779	
1			#75 MAST ASSEMBLY			173397	REVISIONS
1			BOOM STOP ASSEMBLY FOR #72 BOOM			173550	
1			WIRE ROPE GUIDE ASSEMBLY #72 BOOM			173795	
1			END PLATE			174236	
1			EQUALIZER ASSEMBLY			174257	
1			SLEEVE			174345	
1			SPACER			174354	
1			SPACER			174356	
1			EQUALIZER SUPPORT ASSEMBLY			174811	
1			LOWER BM POINT HANGER FRAME ASSY			1750781	DATE 10-3-95
2			LINK			175221	
1			ROPE GUARD			175754	
2			SHEAVE 42.00 DIA, 1.62 ROPE - STEEL			631086	

DWG. NO.	173436	173408	173390	179982	175699	175700	175703	175730	175713	175714	175715	173352	173353	173355	173404	173675	173677	175797	175245	175246	175244	175243	175242
BOOM LENGTH	50 FT 15.24 M BUTT	50 FT 15.24 M #72 INSERT	25 FT 7.62 M #72 INSERT	50 FT 15.24 M TRANSITION INSERT	3 FT .91 M TOP	80.83" 2.05 M BASIC STRAP	15.00" .38 M LINK	PIN	PIN	COLLAR	PIN	25 FT 7.62 M STRAP	50 FT 15.24 STRAP	15.00" .38 M LINK	PIN	COLLAR	PIN	STRAP BRACKET ASSEMBLY	STRAP BRACKET ASSEMBLY	STRAP BRACKET ASSEMBLY	STRAP BRACKET AND TIMBER GUARD ASSEMBLY	TIMBER GUARD ASSEMBLY	TIMBER GUARD ASSEMBLY
153 FT-46.63 M	1	1	0	1	1	2	4	2	2	2	2	2	0	4	4	6	6	1	1	1	1	0	3
178 FT-54.25 M	1	1	1	1	1	2	4	2	2	2	2	4	0	8	8	10	10	1	1	1	2	0	3
203 FT-61.87 M	1	2	0	1	1	2	4	2	2	2	2	4	0	8	8	10	10	1	1	1	1	0	5
228 FT-69.49 M	1	2	1	1	1	2	4	2	2	2	2	6	0	12	12	14	14	1	1	1	2	1	5
253 FT-77.11 M	1	2	2	1	1	2	4	2	2	2	2	8	0	16	16	18	18	1	1	1	3	2	5
278 FT-84.73 M	1	3	1	1	1	2	4	2	2	2	2	6	2	16	16	18	18	1	1	1	3	2	6
303 FT-92.35 M	1	3	2	1	1	2	4	2	2	2	2	8	2	20	20	22	22	1	1	1	4	3	6
328 FT-99.97 M	1	4	1	1	1	2	4	2	2	2	2	6	4	20	20	22	22	1	1	1	4	3	7
353 FT-107.59 M	1	4	2	1	1	2	4	2	2	2	2	8	4	24	24	26	26	1	1	1	5	4	7
378 FT-115.21 M	1	5	1	1	1	2	4	2	2	2	2	6	6	24	24	26	26	1	1	1	5	4	8
403 FT-122.83 M	1	5	2	1	1	2	4	2	2	2	2	8	6	28	28	30	30	1	1	1	6	5	8